

Data Path : Z:\voasrv\HPCHEM1\MSVOA\_V\DATA\VV061625\  
 Data File : VV038802.D  
 Acq On : 16 Jun 2025 13:06  
 Operator : SY/MD  
 Sample : VV0616WBL01  
 Misc : 25.0mL/MSVOA\_V/WATER  
 ALS Vial : 8 Sample Multiplier: 1

Instrument :  
 MSVOA\_V  
 ClientSampleId :  
 VBLK226

Quant Time: Jun 16 16:19:29 2025  
 Quant Method : Z:\voasrv\HPCHEM1\MSVOA\_V\Method\SFAMVSIM061625.M  
 Quant Title : TRACE VOA SOM01.0  
 QLast Update : Mon Jun 16 14:53:20 2025  
 Response via : Initial Calibration

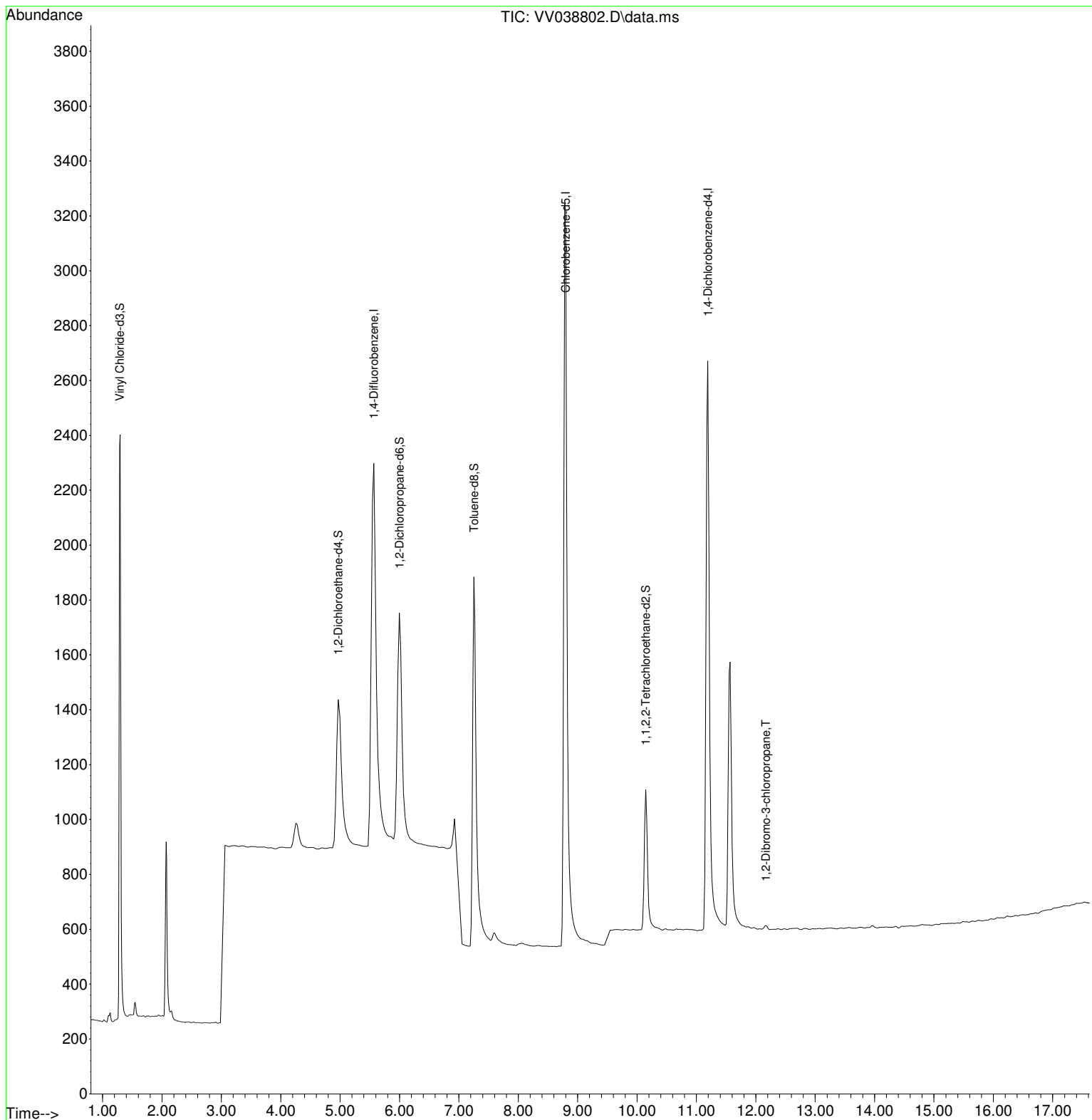
Compound	R.T.	QIon	Response	Conc	Units	Dev(Min)
-----						
Internal Standards						
1) 1,4-Difluorobenzene	5.566	114	6152	0.500	ug/L	0.00
5) Chlorobenzene-d5	8.800	117	5761	0.500	ug/L	0.02
11) 1,4-Dichlorobenzene-d4	11.191	152	2515	0.500	ug/L	0.00
System Monitoring Compounds						
2) Vinyl Chloride-d3	1.287	65	2945	0.504	ug/L	0.00
Spiked Amount	0.500	Range 40 - 130	Recovery	=	100.000%	
4) 1,2-Dichloroethane-d4	4.969	65	1435	0.500	ug/L	0.00
Spiked Amount	0.500	Range 70 - 130	Recovery	=	100.000%	
7) 1,2-Dichloropropane-d6	5.995	67	1770	0.543	ug/L	0.00
Spiked Amount	0.500	Range 60 - 140	Recovery	=	108.000%	
8) Toluene-d8	7.253	98	3387	0.514	ug/L	0.00
Spiked Amount	0.500	Range 70 - 130	Recovery	=	102.000%	
10) 1,1,2,2-Tetrachloroeth...	10.146	84	1195	0.521	ug/L	0.00
Spiked Amount	0.500	Range 65 - 120	Recovery	=	104.000%	
Target Compounds						
13) 1,2-Dibromo-3-chloropr...	12.168	75	33	0.056	ug/L #	81
-----						

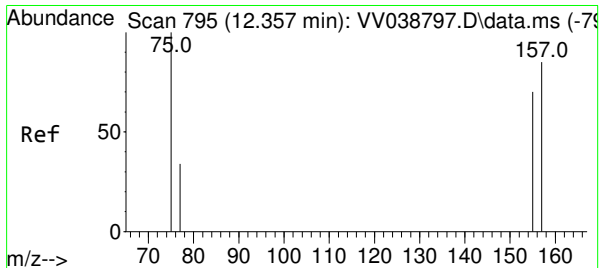
(#) = qualifier out of range (m) = manual integration (+) = signals summed

Data Path : Z:\voasrv\HPCHEM1\MSVOA\_V\DATA\VV061625\  
 Data File : VV038802.D  
 Acq On : 16 Jun 2025 13:06  
 Operator : SY/MD  
 Sample : VV0616WBL01  
 Misc : 25.0mL/MSVOA\_V/WATER  
 ALS Vial : 8 Sample Multiplier: 1

Instrument :  
 MSVOA\_V  
 ClientSampleId :  
 VBLK226

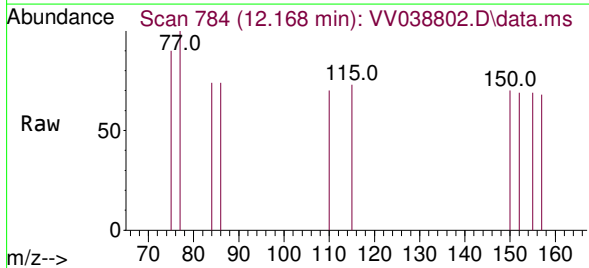
Quant Time: Jun 16 16:19:29 2025  
 Quant Method : Z:\voasrv\HPCHEM1\MSVOA\_V\Method\SFAMVSIM061625.M  
 Quant Title : TRACE VOA SOM01.0  
 QLast Update : Mon Jun 16 14:53:20 2025  
 Response via : Initial Calibration





#13  
 1,2-Dibromo-3-chloropropane  
 Concen: 0.056 ug/L  
 RT: 12.168 min Scan# 7  
 Delta R.T. -0.189 min  
 Lab File: VV038802.D  
 Acq: 16 Jun 2025 13:06

Instrument :  
 MSVOA\_V  
 ClientSampleId :  
 VBLK226



Tgt Ion: 75 Resp: 33

Ion	Ratio	Lower	Upper
75	100		
157	75.3	81.1	121.7#
155	76.7	70.3	105.5

