

Data Path : Z:\voasrv\HPCHEM1\MSVOA_V\Data\VW061722\
 Data File : VW026407.D
 Acq On : 18 Jun 2022 02:04
 Operator : SY/MD
 Sample : N3358-06
 Misc : 25mL/MSVOA_V/WATER
 ALS Vial : 39 Sample Multiplier: 1

Instrument :
 MSVOA_V
 ClientSampleId :
 EW4S2

Quant Time: Jun 18 03:25:35 2022
 Quant Method : Z:\voasrv\HPCHEM1\MSVOA_V\Method\SFAMVTR061522WMA.M
 Quant Title : TRACE VOA SFAM1.0
 QLast Update : Sat Jun 18 01:02:22 2022
 Response via : Initial Calibration

Compound	R.T.	QIon	Response	Conc	Units	Dev(Min)

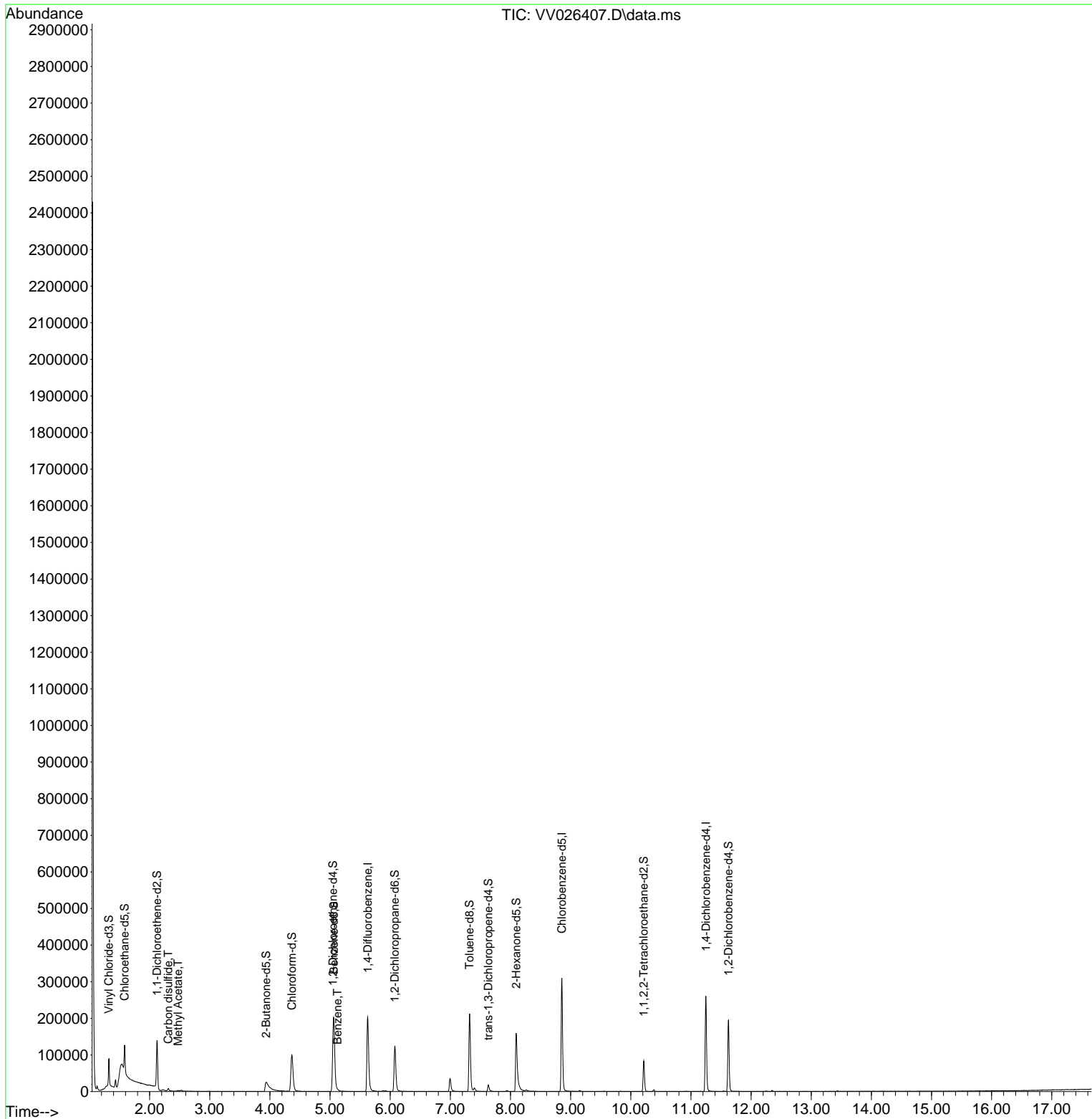
Internal Standards						
1) 1,4-Difluorobenzene	5.625	114	183900	5.000	ug/L	0.00
28) Chlorobenzene-d5	8.854	117	176635	5.000	ug/L	0.00
58) 1,4-Dichlorobenzene-d4	11.249	152	70420	5.000	ug/L	0.00
System Monitoring Compounds						
4) Vinyl Chloride-d3	1.323	65	48879	3.060	ug/L	0.00
Spiked Amount	5.000	Range 40 - 130	Recovery	=	61.200%	
7) Chloroethane-d5	1.584	69	45725	3.641	ug/L	0.00
Spiked Amount	5.000	Range 65 - 130	Recovery	=	72.800%	
11) 1,1-Dichloroethene-d2	2.124	63	71181	2.595	ug/L	0.00
Spiked Amount	5.000	Range 60 - 125	Recovery	=	52.000%#	
20) 2-Butanone-d5	3.937	46	63200	40.550	ug/L	0.02
Spiked Amount	50.000	Range 40 - 130	Recovery	=	81.100%	
24) Chloroform-d	4.365	84	108863	4.650	ug/L	0.00
Spiked Amount	5.000	Range 70 - 125	Recovery	=	93.000%	
26) 1,2-Dichloroethane-d4	5.050	65	43920	4.434	ug/L	0.00
Spiked Amount	5.000	Range 70 - 130	Recovery	=	88.600%	
32) Benzene-d6	5.063	84	191119	4.047	ug/L	0.00
Spiked Amount	5.000	Range 70 - 125	Recovery	=	81.000%	
36) 1,2-Dichloropropane-d6	6.076	67	63771	4.627	ug/L	0.00
Spiked Amount	5.000	Range 60 - 140	Recovery	=	92.600%	
41) Toluene-d8	7.320	98	145555	3.380	ug/L	0.00
Spiked Amount	5.000	Range 70 - 130	Recovery	=	67.600%#	
43) trans-1,3-Dichloroprop...	7.632	79	11640	2.605	ug/L	0.00
Spiked Amount	5.000	Range 55 - 130	Recovery	=	52.000%#	
46) 2-Hexanone-d5	8.095	63	55238	40.916	ug/L	0.00
Spiked Amount	50.000	Range 45 - 130	Recovery	=	81.840%	
56) 1,1,2,2-Tetrachloroeth...	10.217	84	42222	4.973	ug/L	0.00
Spiked Amount	5.000	Range 65 - 120	Recovery	=	99.400%	
66) 1,2-Dichlorobenzene-d4	11.625	152	52706	4.859	ug/L	0.00
Spiked Amount	5.000	Range 80 - 120	Recovery	=	97.200%	
Target Compounds						
						Qvalue
14) Carbon disulfide	2.310	76	7744	0.270	ug/L #	91
15) Methyl Acetate	2.474	43	2111	0.728	ug/L #	76
33) Benzene	5.124	78	2419	0.053	ug/L	100

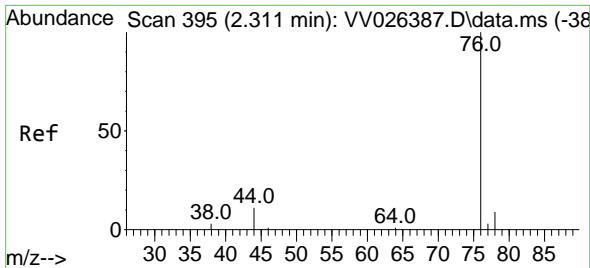
(#) = qualifier out of range (m) = manual integration (+) = signals summed

Data Path : Z:\voasrv\HPCHEM1\MSVOA_V\Data\VV061722\
 Data File : VV026407.D
 Acq On : 18 Jun 2022 02:04
 Operator : SY/MD
 Sample : N3358-06
 Misc : 25mL/MSVOA_V/WATER
 ALS Vial : 39 Sample Multiplier: 1

Instrument :
 MSVOA_V
 ClientSampleId :
 EW4S2

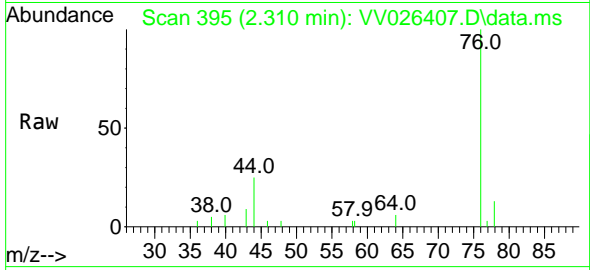
Quant Time: Jun 18 03:25:35 2022
 Quant Method : Z:\voasrv\HPCHEM1\MSVOA_V\Method\SFAMVTR061522WMA.M
 Quant Title : TRACE VOA SFAM1.0
 QLast Update : Sat Jun 18 01:02:22 2022
 Response via : Initial Calibration



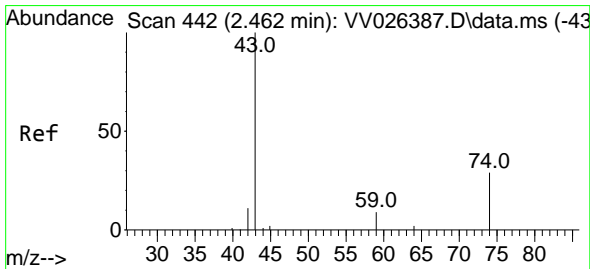
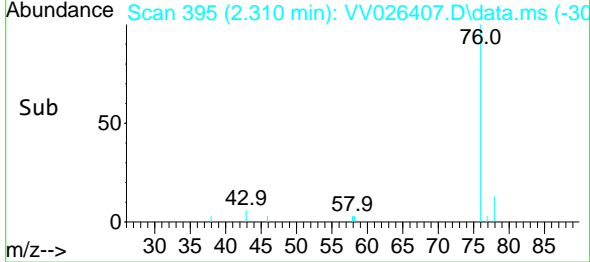
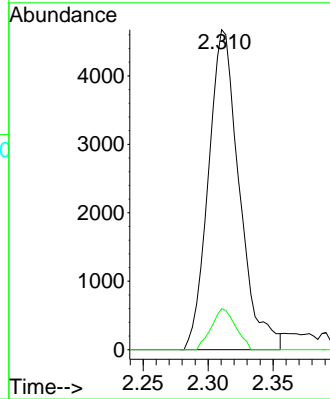


#14
 Carbon disulfide
 Concen: 0.270 ug/L
 RT: 2.310 min Scan# 395
 Delta R.T. -0.000 min
 Lab File: VV026407.D
 Acq: 18 Jun 2022 02:04

Instrument : MSVOA_V
 ClientSampleId : EW4S2

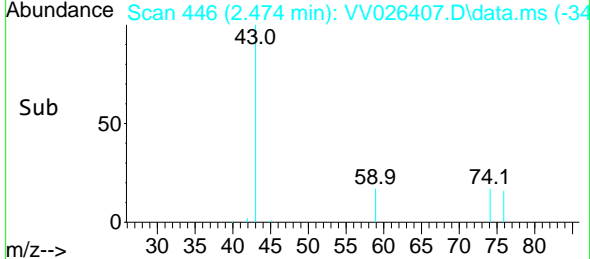
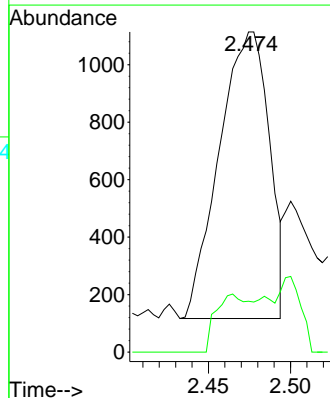
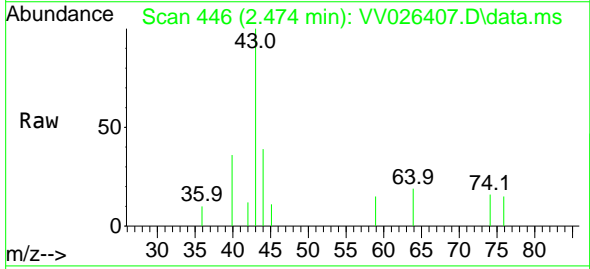


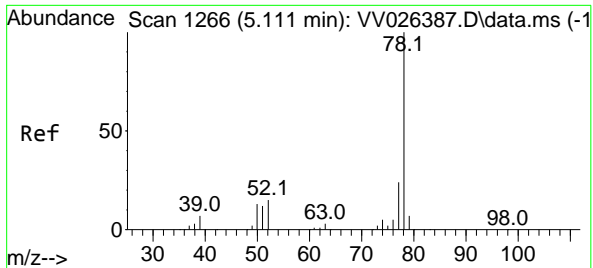
Tgt Ion: 76 Resp: 7744
 Ion Ratio Lower Upper
 76 100
 78 12.8 7.7 11.5#



#15
 Methyl Acetate
 Concen: 0.728 ug/L
 RT: 2.474 min Scan# 446
 Delta R.T. 0.013 min
 Lab File: VV026407.D
 Acq: 18 Jun 2022 02:04

Tgt Ion: 43 Resp: 2111
 Ion Ratio Lower Upper
 43 100
 74 14.2 21.4 32.0#





#33
 Benzene
 Concen: 0.053 ug/L
 RT: 5.124 min Scan# 11
 Delta R.T. 0.013 min
 Lab File: VV026407.D
 Acq: 18 Jun 2022 02:04

Instrument :
 MSVOA_V
 ClientSampleId :
 EW4S2

Tgt Ion: 78 Resp: 2419

