

Data Path : Z:\voasrv\HPCHEM1\MSVOA\_V\Data\VW061923\  
 Data File : VW031593.D  
 Acq On : 19 Jun 2023 11:04  
 Operator : SY/MD  
 Sample : 03249-18  
 Misc : 5.0mL/MSVOA\_V/WATER  
 ALS Vial : 6 Sample Multiplier: 1

Instrument :  
 MSVOA\_V  
 ClientSampleId :  
 EXYT8

Quant Time: Jun 20 01:55:39 2023  
 Quant Method : Z:\voasrv\HPCHEM1\MSVOA\_V\Method\SFAMVLM061423WMA.M  
 Quant Title : VOC Analysis  
 QLast Update : Sat Jun 17 02:08:04 2023  
 Response via : Initial Calibration

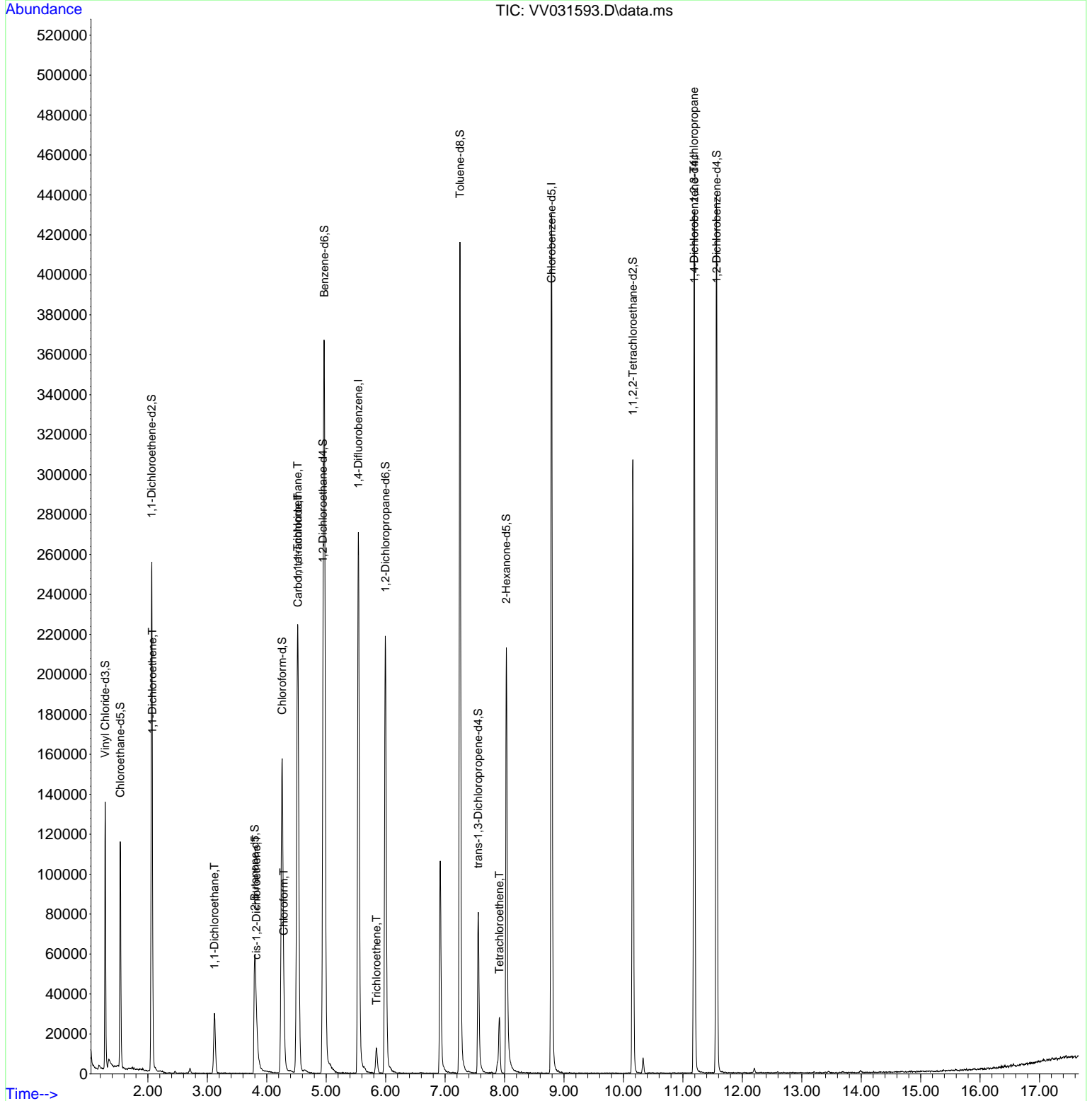
Compound	R.T.	QIon	Response	Conc	Units	Dev(Min)
Internal Standards						
1) 1,4-Difluorobenzene	5.542	114	223596	50.000	ug/L	0.00
28) Chlorobenzene-d5	8.789	117	231595	50.000	ug/L	0.00
58) 1,4-Dichlorobenzene-d4	11.191	152	111266	50.000	ug/L	0.00
System Monitoring Compounds						
4) Vinyl Chloride-d3	1.281	65	87868	59.047	ug/L	0.00
Spiked Amount	50.000	Range 60 - 135	Recovery =	118.100%		
7) Chloroethane-d5	1.535	69	75923	58.473	ug/L	0.00
Spiked Amount	50.000	Range 70 - 130	Recovery =	116.940%		
11) 1,1-Dichloroethene-d2	2.066	65	42201	55.025	ug/L	0.00
Spiked Amount	50.000	Range 60 - 125	Recovery =	110.040%		
21) 2-Butanone-d5	3.799	46	99736	82.771	ug/L	0.00
Spiked Amount	100.000	Range 40 - 130	Recovery =	82.770%		
24) Chloroform-d	4.259	84	168990	45.344	ug/L	0.00
Spiked Amount	50.000	Range 70 - 125	Recovery =	90.680%		
26) 1,2-Dichloroethane-d4	4.947	65	114692	49.187	ug/L	0.00
Spiked Amount	50.000	Range 70 - 125	Recovery =	98.380%		
32) Benzene-d6	4.966	84	325010	49.857	ug/L	0.00
Spiked Amount	50.000	Range 70 - 125	Recovery =	99.720%		
36) 1,2-Dichloropropane-d6	5.995	67	107924	46.710	ug/L	0.00
Spiked Amount	50.000	Range 70 - 120	Recovery =	93.420%		
41) Toluene-d8	7.249	98	280863	46.951	ug/L	0.00
Spiked Amount	50.000	Range 80 - 120	Recovery =	93.900%		
43) trans-1,3-Dichloroprop...	7.558	79	50677	44.992	ug/L	0.00
Spiked Amount	50.000	Range 60 - 125	Recovery =	89.980%		
47) 2-Hexanone-d5	8.030	63	74092	81.218	ug/L	0.00
Spiked Amount	100.000	Range 45 - 130	Recovery =	81.220%		
56) 1,1,2,2-Tetrachloroeth...	10.159	84	147839	42.391	ug/L	0.00
Spiked Amount	50.000	Range 65 - 120	Recovery =	84.780%		
66) 1,2-Dichlorobenzene-d4	11.567	152	111283	52.469	ug/L	0.00
Spiked Amount	50.000	Range 80 - 120	Recovery =	104.940%		
Target Compounds						
12) 1,1-Dichloroethene	2.076	96	7785	4.705	ug/L #	1
19) 1,1-Dichloroethane	3.121	63	31151	8.358	ug/L	95
20) cis-1,2-Dichloroethene	3.825	96	5613	3.008	ug/L	97
25) Chloroform	4.288	83	12791	3.301	ug/L	98
30) 1,1,1-Trichloroethane	4.519	97	194227	52.308	ug/L	99
31) Carbon tetrachloride	4.526	117	22277	6.771	ug/L	95
34) Trichloroethene	5.847	95	4728	2.295	ug/L	95
46) Tetrachloroethene	7.915	164	6086	3.763	ug/L	92
61) 1,2,3-Trichloropropane	11.188	75	12626	5.745	ug/L #	65

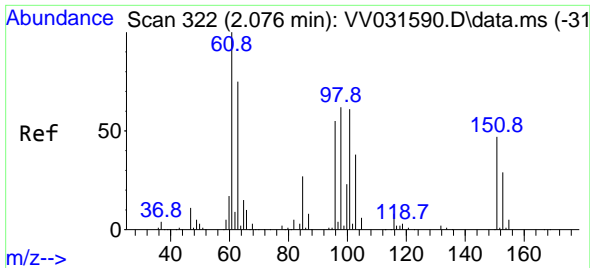
(#) = qualifier out of range (m) = manual integration (+) = signals summed

Data Path : Z:\voasrv\HPCHEM1\MSVOA\_V\Data\VV061923\  
 Data File : VV031593.D  
 Acq On : 19 Jun 2023 11:04  
 Operator : SY/MD  
 Sample : 03249-18  
 Misc : 5.0mL/MSVOA\_V/WATER  
 ALS Vial : 6 Sample Multiplier: 1

Instrument :  
 MSVOA\_V  
 ClientSampleId :  
 EXYT8

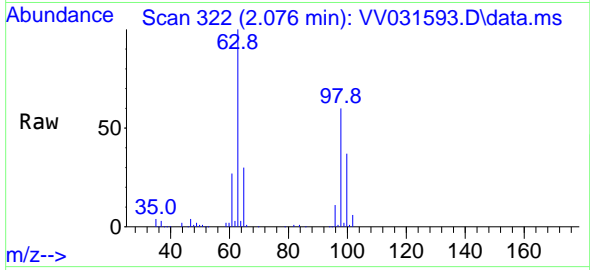
Quant Time: Jun 20 01:55:39 2023  
 Quant Method : Z:\voasrv\HPCHEM1\MSVOA\_V\Method\SFAMVLM061423WMA.M  
 Quant Title : VOC Analysis  
 QLast Update : Sat Jun 17 02:08:04 2023  
 Response via : Initial Calibration



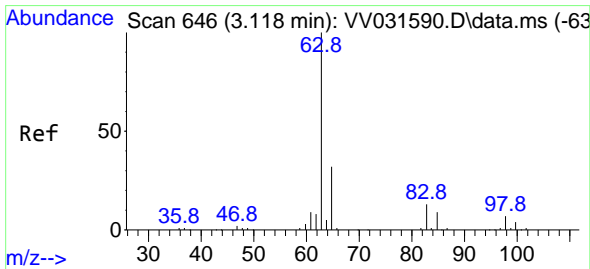
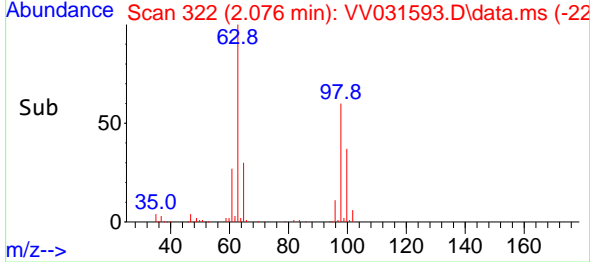
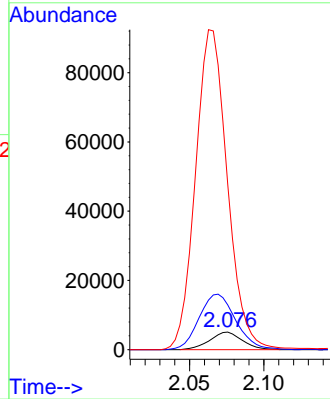


#12  
 1,1-Dichloroethene  
 Concen: 4.705 ug/L  
 RT: 2.076 min Scan# 31  
 Delta R.T. -0.000 min  
 Lab File: VV031593.D  
 Acq: 19 Jun 2023 11:04

Instrument : MSVOA\_V  
 ClientSampleId : EXYT8

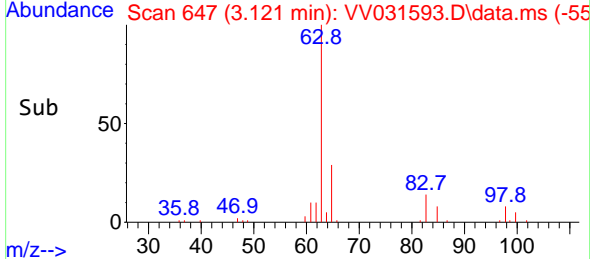
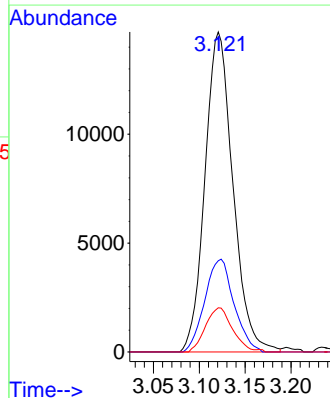
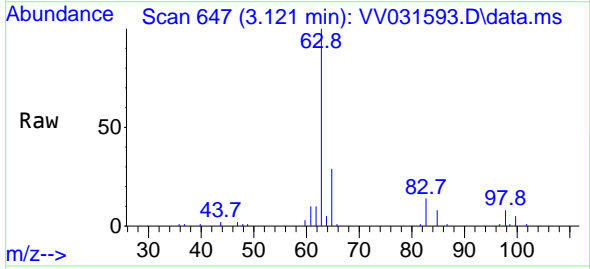


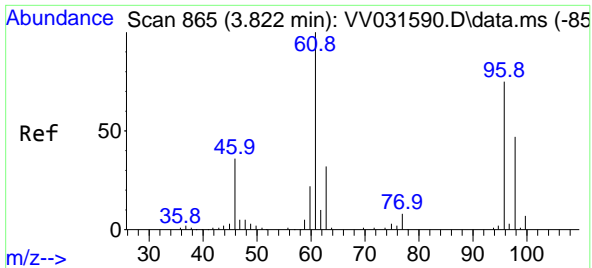
Tgt Ion: 96 Resp: 7785  
 Ion Ratio Lower Upper  
 96 100  
 61 254.8 128.9 239.5#  
 63 940.5 95.3 177.1#



#19  
 1,1-Dichloroethane  
 Concen: 8.358 ug/L  
 RT: 3.121 min Scan# 647  
 Delta R.T. 0.003 min  
 Lab File: VV031593.D  
 Acq: 19 Jun 2023 11:04

Tgt Ion: 63 Resp: 31151  
 Ion Ratio Lower Upper  
 63 100  
 65 28.5 22.5 41.7  
 83 13.8 10.0 18.6



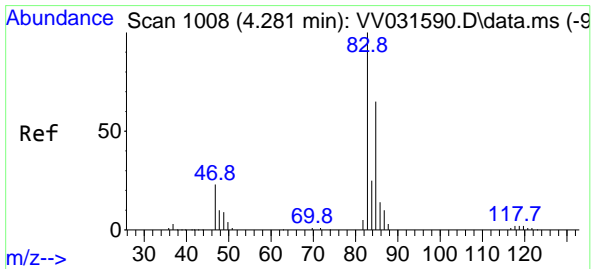
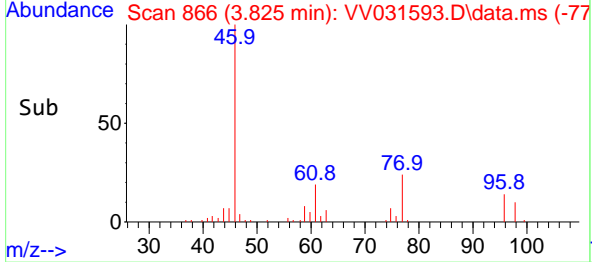
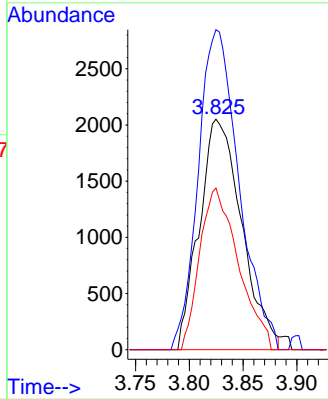
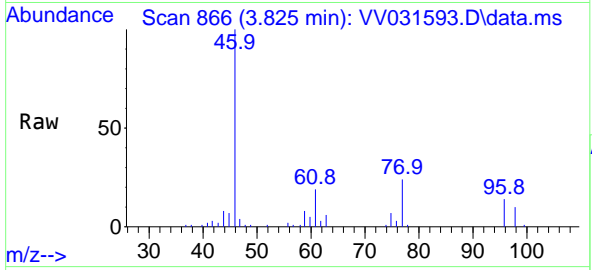


#20  
 cis-1,2-Dichloroethene  
 Concen: 3.008 ug/L  
 RT: 3.825 min Scan# 80  
 Delta R.T. -0.000 min  
 Lab File: VV031593.D  
 Acq: 19 Jun 2023 11:04

Instrument : MSVOA\_V  
 ClientSampleId : EXYT8

Tgt Ion: 96 Resp: 5613

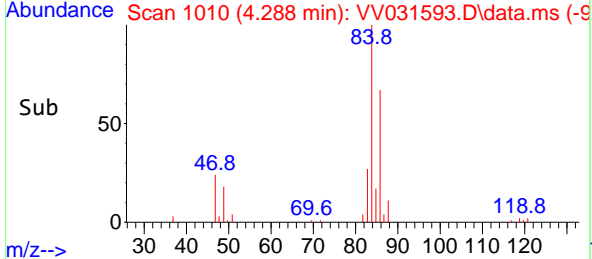
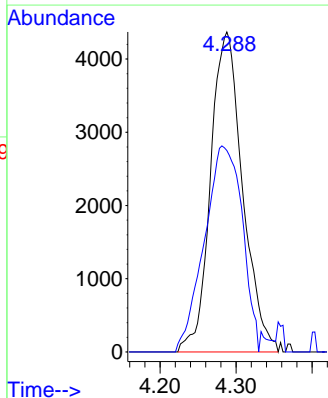
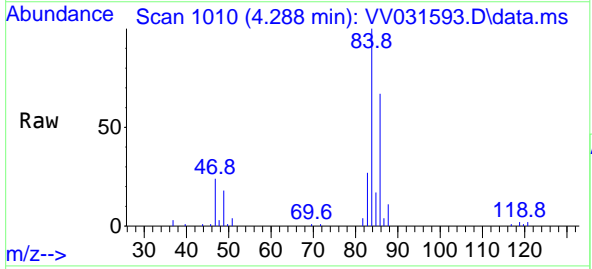
Ion	Ratio	Lower	Upper
96	100		
61	138.9	98.6	183.0
98	70.1	45.7	84.9

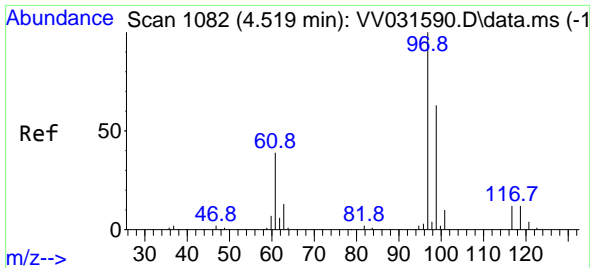


#25  
 Chloroform  
 Concen: 3.301 ug/L  
 RT: 4.288 min Scan# 1010  
 Delta R.T. 0.003 min  
 Lab File: VV031593.D  
 Acq: 19 Jun 2023 11:04

Tgt Ion: 83 Resp: 12791

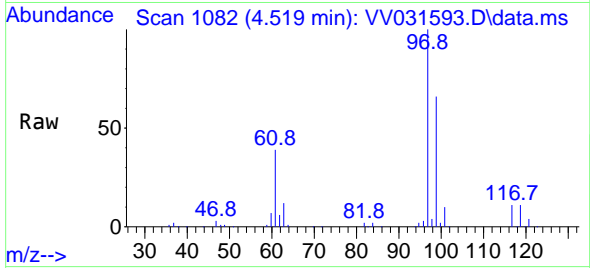
Ion	Ratio	Lower	Upper
83	100		
85	62.9	45.3	84.1





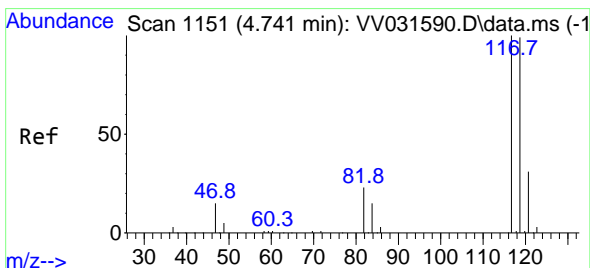
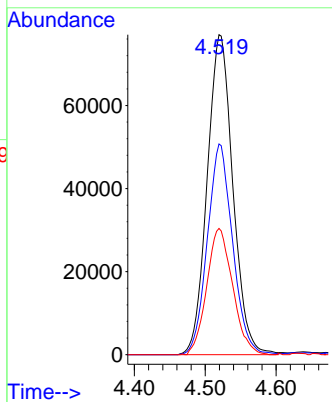
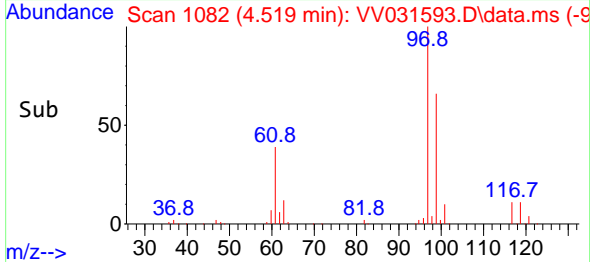
#30  
 1,1,1-Trichloroethane  
 Concen: 52.308 ug/L  
 RT: 4.519 min Scan# 1082  
 Delta R.T. -0.000 min  
 Lab File: VV031593.D  
 Acq: 19 Jun 2023 11:04

Instrument : MSVOA\_V  
 ClientSampleId : EXYT8

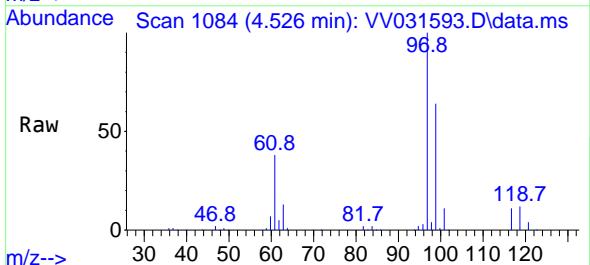


Tgt Ion: 97 Resp: 194227

Ion	Ratio	Lower	Upper
97	100		
99	64.8	51.8	77.6
61	39.7	33.0	49.6

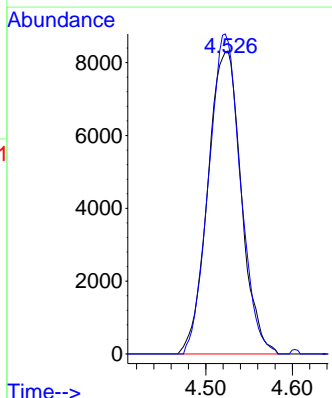
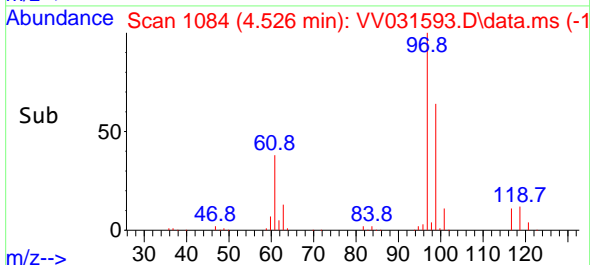


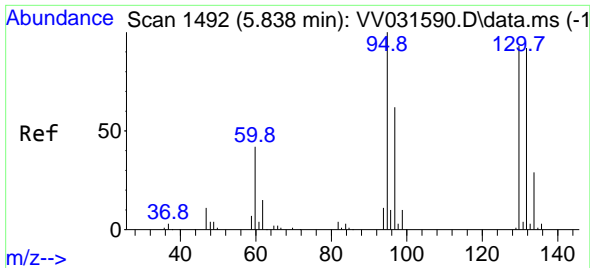
#31  
 Carbon tetrachloride  
 Concen: 6.771 ug/L  
 RT: 4.526 min Scan# 1084  
 Delta R.T. -0.219 min  
 Lab File: VV031593.D  
 Acq: 19 Jun 2023 11:04



Tgt Ion: 117 Resp: 22277

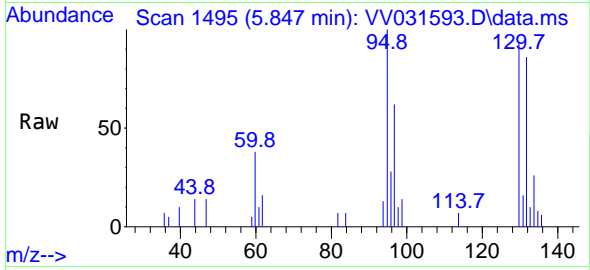
Ion	Ratio	Lower	Upper
117	100		
119	100.4	76.2	114.4





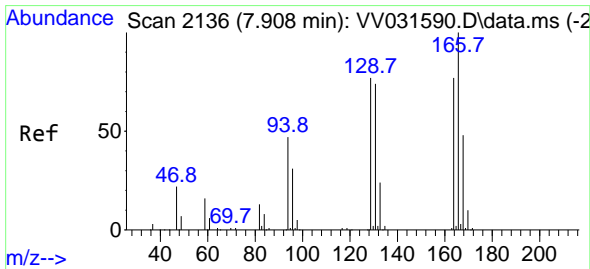
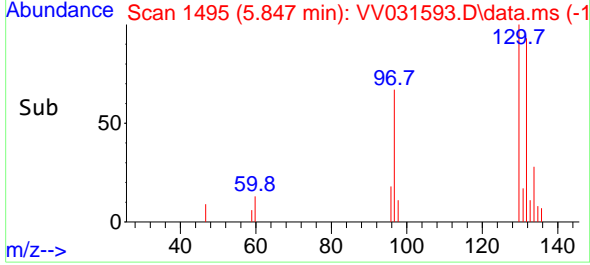
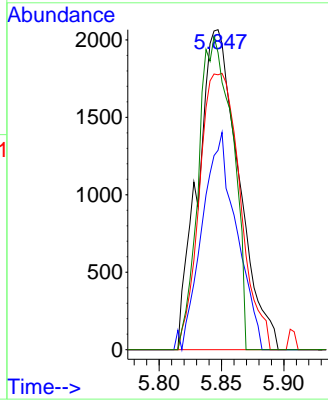
#34  
 Trichloroethene  
 Concen: 2.295 ug/L  
 RT: 5.847 min Scan# 1495  
 Delta R.T. 0.010 min  
 Lab File: VV031593.D  
 Acq: 19 Jun 2023 11:04

Instrument : MSVOA\_V  
 ClientSampleId : EXYT8



Tgt Ion: 95 Resp: 4728

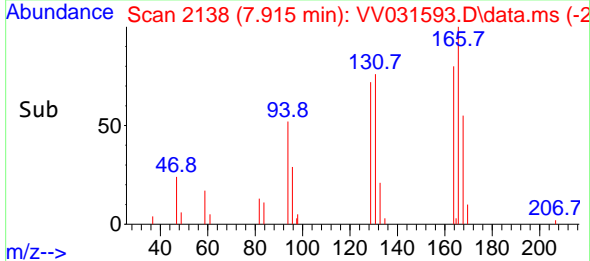
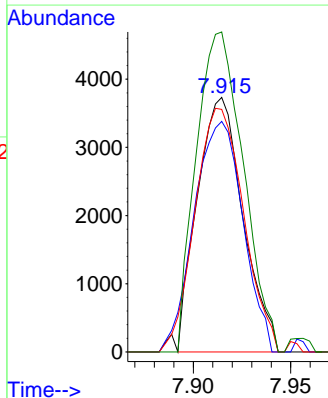
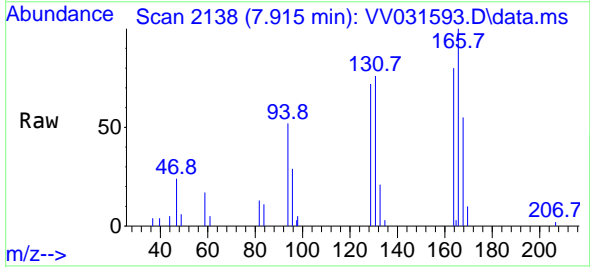
Ion	Ratio	Lower	Upper
95	100		
97	72.7	46.8	86.8
132	96.4	66.4	123.2
130	92.8	69.7	129.4

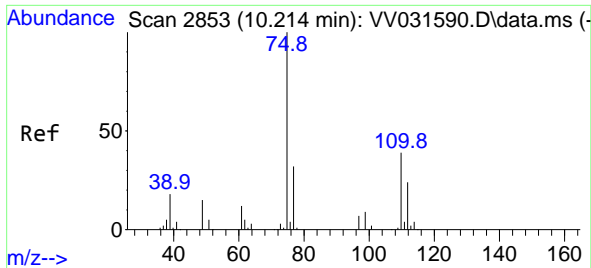


#46  
 Tetrachloroethene  
 Concen: 3.763 ug/L  
 RT: 7.915 min Scan# 2138  
 Delta R.T. 0.003 min  
 Lab File: VV031593.D  
 Acq: 19 Jun 2023 11:04

Tgt Ion: 164 Resp: 6086

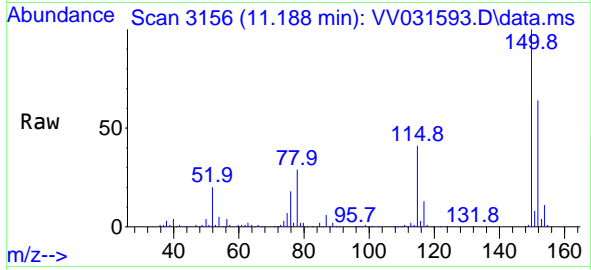
Ion	Ratio	Lower	Upper
164	100		
129	87.0	68.4	127.0
131	91.6	67.6	125.6
166	120.8	91.3	169.5





#61  
 1,2,3-Trichloropropane  
 Concen: 5.745 ug/L  
 RT: 11.188 min Scan# 31  
 Delta R.T. 0.974 min  
 Lab File: VV031593.D  
 Acq: 19 Jun 2023 11:04

Instrument :  
 MSVOA\_V  
 ClientSampleId :  
 EXYT8



Tgt Ion: 75 Resp: 12626

Ion	Ratio	Lower	Upper
75	100		
77	33.9	25.4	38.0
110	1.9	31.3	46.9#

