

Data Path : Z:\voasrv\HPCHEM1\MSVOA_V\Data\VV062022\
 Data File : VV026453.D
 Acq On : 20 Jun 2022 18:13
 Operator : SY/MD
 Sample : N3298-03
 Misc : 25mL/MSVOA_V/WATER
 ALS Vial : 19 Sample Multiplier: 1

Instrument :
 MSVOA_V
 ClientSampleId :
 VHBLK001

Integration Parameters: rteint.p
 Integrator: RTE
 Smoothing : ON Filtering: 5
 Sampling : 1 Min Area: 3 % of largest Peak
 Start Thrs: 0.1 Max Peaks: 100
 Stop Thrs : 0 Peak Location: TOP

If leading or trailing edge < 100 prefer < Baseline drop else tangent >
 Peak separation: 5

Method : Z:\voasrv\HPCHEM1\MSVOA_V\Method\SFAMVTR061522WMA.M
 Title : TRACE VOA SFAM1.0

Signal : TIC: VV026453.D\data.ms

peak #	R.T. min	first scan	max scan	last scan	PK TY	peak height	corr. area	corr. % max.	% of total
1	1.259	52	68	70	rBV8	13615	23971	4.06%	0.524%
2	1.320	81	87	107	rVB	94219	109114	18.48%	2.386%
3	1.584	149	169	180	rBV	96644	157071	26.60%	3.435%
4	2.121	328	336	357	rVB	170648	250299	42.38%	5.474%
5	2.526	453	462	473	rBV2	6630	11348	1.92%	0.248%
6	3.924	886	897	951	rBV2	31005	147054	24.90%	3.216%
7	4.362	1017	1033	1059	rBV	106910	270163	45.75%	5.908%
8	5.059	1234	1250	1277	rBV2	238760	590550	100.00%	12.914%
9	5.625	1414	1426	1461	rBV	190961	394784	66.85%	8.633%
10	6.075	1553	1566	1593	rBV	134762	283186	47.95%	6.193%
11	6.995	1840	1852	1878	rBV	44179	87517	14.82%	1.914%
12	7.320	1940	1953	1972	rBV	277757	487102	82.48%	10.652%
13	7.628	2036	2049	2072	rBV2	22527	44273	7.50%	0.968%
14	8.095	2182	2194	2231	rBV	172013	352853	59.75%	7.716%
15	8.853	2419	2430	2451	rBV	283361	471582	79.85%	10.313%
16	10.217	2842	2854	2869	rBV	87679	139205	23.57%	3.044%
17	11.249	3163	3175	3191	rBV	251198	390061	66.05%	8.530%
18	11.622	3280	3291	3311	rBV	229101	362700	61.42%	7.932%

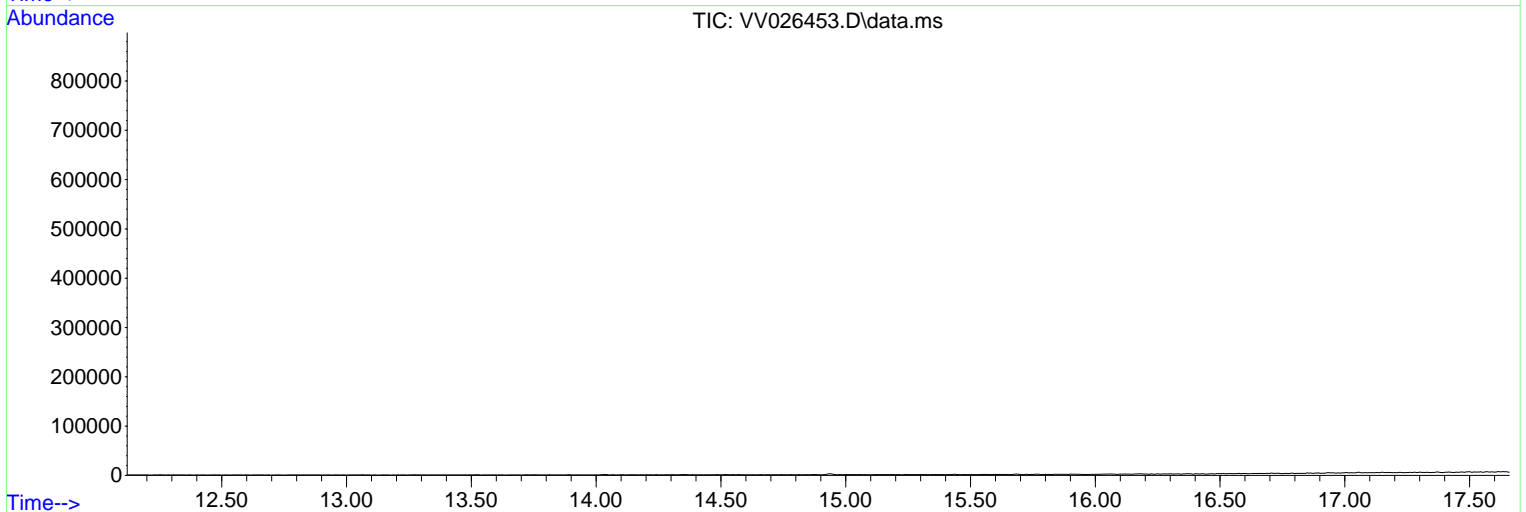
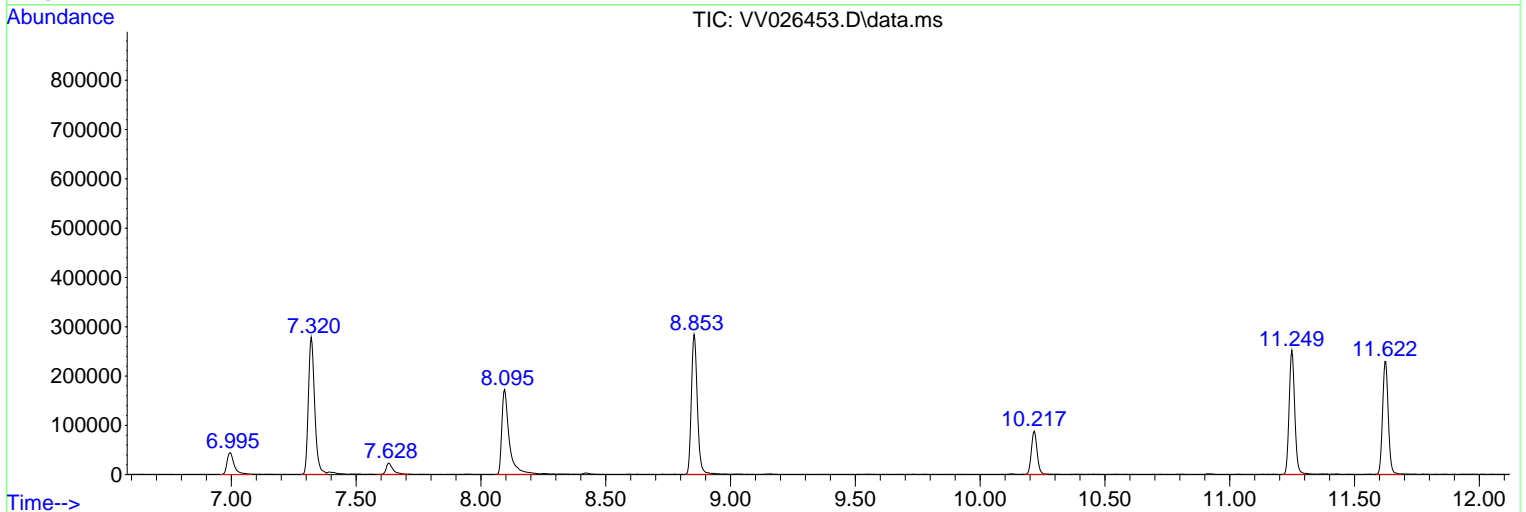
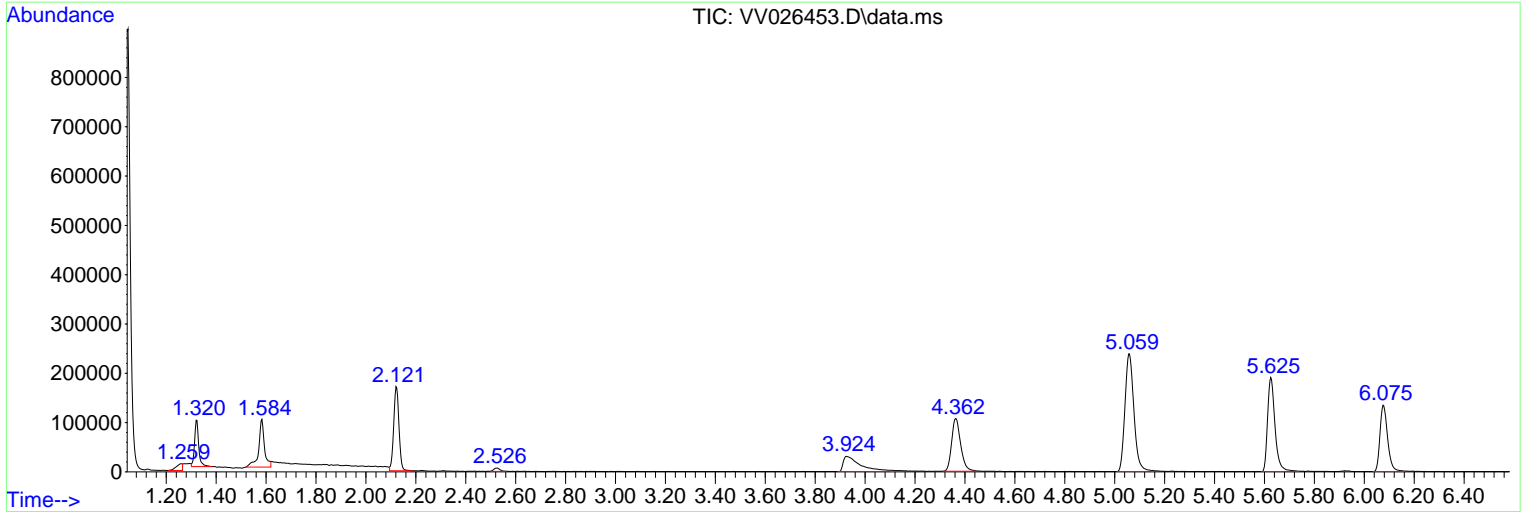
Sum of corrected areas: 4572833

Data Path : Z:\voasrv\HPCHEM1\MSVOA_V\Data\VV062022\
 Data File : VV026453.D
 Acq On : 20 Jun 2022 18:13
 Operator : SY/MD
 Sample : N3298-03
 Misc : 25mL/MSVOA_V/WATER
 ALS Vial : 19 Sample Multiplier: 1

Instrument :
 MSVOA_V
 ClientSampleId :
 VHBLK001

Quant Method : Z:\voasrv\HPCHEM1\MSVOA_V\Method\SFAMVTR061522WMA.M
 Quant Title : TRACE VOA SFAM1.0

TIC Library :
 TIC Integration Parameters: rteint.p



Data Path : Z:\voasrv\HPCHEM1\MSVOA_V\Data\VV062022\
Data File : VV026453.D
Acq On : 20 Jun 2022 18:13
Operator : SY/MD
Sample : N3298-03
Misc : 25mL/MSVOA_V/WATER
ALS Vial : 19 Sample Multiplier: 1

Instrument :
MSVOA_V
ClientSampleId :
VHBLK001

Quant Method : Z:\voasrv\HPCHEM1\MSVOA_V\Method\SFAMVTR061522WMA.M
Quant Title : TRACE VOA SFAM1.0

TIC Library :
TIC Integration Parameters: rteint.p

No Library Search Compounds Detected

Data Path : Z:\voasrv\HPCHEM1\MSVOA_V\Data\VV062022\
Data File : VV026453.D
Acq On : 20 Jun 2022 18:13
Operator : SY/MD
Sample : N3298-03
Misc : 25mL/MSVOA_V/WATER
ALS Vial : 19 Sample Multiplier: 1

Instrument :
MSVOA_V
ClientSampleId :
VHBLK001

Quant Method : Z:\voasrv\HPCHEM1\MSVOA_V\Method\SFAMVTR061522WMA.M
Quant Title : TRACE VOA SFAM1.0

TIC Library :
TIC Integration Parameters: rteint.p

TIC Top Hit name	RT	EstConc	Units	Response	--Internal Standard--			
					#	RT	Resp	Conc
