

Data Path : Z:\VOASRV\HPCHEM1\MSVOA V\DATA\VV062118\
 Data File : VV006392.D
 Acq On : 21 Jun 2018 14:17
 Operator : SY/MD
 Sample : J3553-05
 Misc : 25 mL/MSVOA V/WATER
 ALS Vial : 1 Sample Multiplier: 1

Instrument :
 MSVOA_V
 ClientSampleID :
 C0KJ3

Integration Parameters: rteint.p
 Integrator: RTE
 Smoothing : ON
 Sampling : 1
 Start Thrs: 0.1
 Stop Thrs : 0

Filtering: 5
 Min Area: 3 % of largest Peak
 Max Peaks: 100
 Peak Location: TOP

If leading or trailing edge < 100 prefer < Baseline drop else tangent >
 Peak separation: 5

Method : Z:\VOASRV\HPCHEM1\MSVOA_V\METHOD\SOMVTR053118WMA.M
 Title : TRACE VOA SOM01.0

Signal : TIC

peak #	R.T. min	first scan	max scan	last scan	PK TY	peak height	corr. area	corr. % max.	% of total
1	1.029	30	43	67	rBV	2203569	2579596	100.00%	22.973%
2	1.321	125	134	153	rVB	108030	128370	4.98%	1.143%
3	1.431	162	168	180	rVB	41657	48332	1.87%	0.430%
4	1.585	209	216	230	rBV	102860	117414	4.55%	1.046%
5	2.141	377	389	401	rBV3	306696	520420	20.17%	4.635%
6	2.212	402	411	424	rVB	13605	29560	1.15%	0.263%
7	2.385	449	465	484	rBV2	14663	67748	2.63%	0.603%
8	2.659	541	550	566	rVB	20251	42192	1.64%	0.376%
9	3.964	938	956	970	rBV	153688	467507	18.12%	4.163%
10	4.411	1077	1095	1122	rBV	164962	404209	15.67%	3.600%
11	4.665	1158	1174	1190	rBV3	19099	46151	1.79%	0.411%
12	5.102	1292	1310	1342	rBV2	369663	855563	33.17%	7.619%
13	5.671	1472	1487	1506	rBV	352363	685429	26.57%	6.104%
14	5.964	1563	1578	1596	rBV	276003	545338	21.14%	4.857%
15	6.125	1614	1628	1649	rVB	203085	405003	15.70%	3.607%
16	7.035	1899	1911	1932	rBV	91619	160994	6.24%	1.434%
17	7.366	2000	2014	2032	rBV	416601	710545	27.54%	6.328%
18	7.671	2095	2109	2126	rBV	52965	89788	3.48%	0.800%
19	8.144	2243	2256	2295	rBV2	437166	937936	36.36%	8.353%
20	8.903	2479	2492	2518	rBV	478717	799192	30.98%	7.117%
21	10.269	2904	2917	2930	rBV	133081	209855	8.14%	1.869%
22	10.430	2955	2967	2985	rBV	24652	41954	1.63%	0.374%
23	11.301	3225	3238	3264	rBV	442866	722855	28.02%	6.438%
24	11.678	3343	3355	3382	rVB	372605	612754	23.75%	5.457%

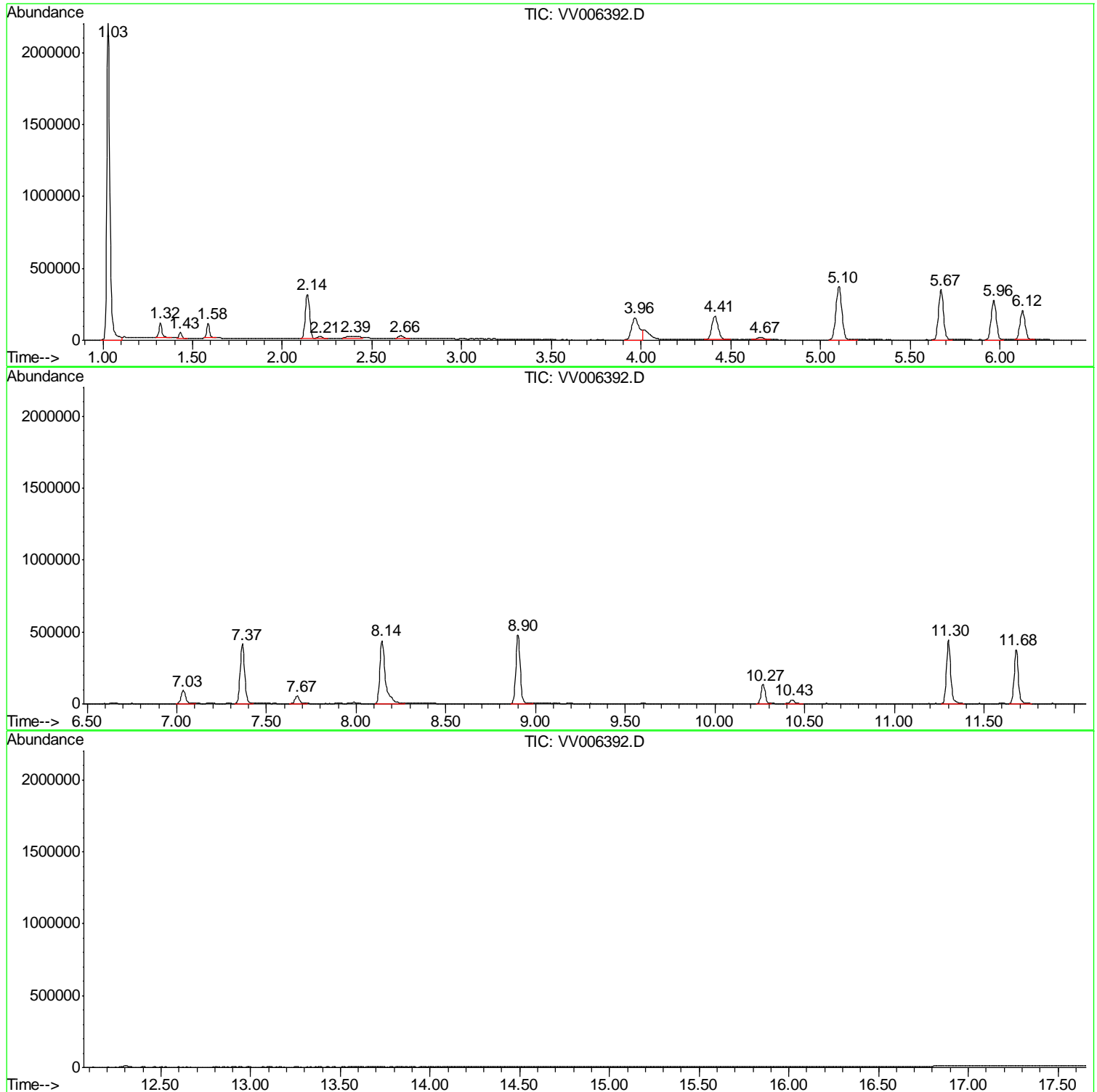
Sum of corrected areas: 11228705

Data Path : Z:\VOASRV\HPCHEM1\MSVOA V\DATA\VV062118\
Data File : VV006392.D
Acq On : 21 Jun 2018 14:17
Operator : SY/MD
Sample : J3553-05
Misc : 25 mL/MSVOA V/WATER
ALS Vial : 1 Sample Multiplier: 1

Instrument :
MSVOA_V
ClientSampleId :
C0KJ3

Quant Method : Z:\VOASRV\HPCHEM1\MSVOA_V\METHOD\SOMVTR053118WMA.M
Quant Title : TRACE VOA SOM01.0

TIC Library : C:\DATABASE\NIST11.L
TIC Integration Parameters: LSCINT.P



Data Path : Z:\VOASRV\HPCHEM1\MSVOA_V\DATA\VV062118\
Data File : VV006392.D
Acq On : 21 Jun 2018 14:17
Operator : SY/MD
Sample : J3553-05
Misc : 25 mL/MSVOA_V/WATER
ALS Vial : 1 Sample Multiplier: 1

Instrument :
MSVOA_V
ClientSampleId :
C0KJ3

Quant Method : Z:\VOASRV\HPCHEM1\MSVOA_V\METHOD\SOMVTR053118WMA.M
Quant Title : TRACE VOA SOM01.0

TIC Library : C:\DATABASE\NIST11.L
TIC Integration Parameters: LSCINT.P

No Library Search Compounds Detected

Data Path : Z:\VOASRV\HPCHEM1\MSVOA_V\DATA\VV062118\
Data File : VV006392.D
Acq On : 21 Jun 2018 14:17
Operator : SY/MD
Sample : J3553-05
Misc : 25 mL/MSVOA_V/WATER
ALS Vial : 1 Sample Multiplier: 1

Instrument :
MSVOA_V
ClientSampleId :
C0KJ3

Quant Method : Z:\VOASRV\HPCHEM1\MSVOA_V\METHOD\SOMVTR053118WMA.M
Quant Title : TRACE VOA SOM01.0

TIC Library : C:\DATABASE\NIST11.L
TIC Integration Parameters: LSCINT.P

TIC Top Hit name	RT	EstConc	Units	Response	--Internal Standard--			
					#	RT	Resp	Conc
