

Data Path : Z:\voasrv\HPCHEM1\MSVOA_V\Data\VV062122\
 Data File : VV026490.D
 Acq On : 21 Jun 2022 15:52
 Operator : SY/MD
 Sample : N3355-10DL 10X
 Misc : 25mL/MSVOA_V/WATER
 ALS Vial : 15 Sample Multiplier: 1

Instrument :
 MSVOA_V
 ClientSampleId :
 EY0C8DL

Integration Parameters: rteint.p
 Integrator: RTE
 Smoothing : ON Filtering: 5
 Sampling : 1 Min Area: 3 % of largest Peak
 Start Thrs: 0.1 Max Peaks: 100
 Stop Thrs : 0 Peak Location: TOP

If leading or trailing edge < 100 prefer < Baseline drop else tangent >
 Peak separation: 5

Method : Z:\voasrv\HPCHEM1\MSVOA_V\Method\SFAMVTR061522WMA.M
 Title : TRACE VOA SFAM1.0

Signal : TIC: VV026490.D\data.ms

peak #	R.T. min	first scan	max scan	last scan	PK TY	peak height	corr. area	corr. % max.	% of total
1	1.323	81	88	99	rBV	81778	85798	15.81%	1.841%
2	1.587	162	170	182	rBV	77298	90597	16.70%	1.944%
3	2.124	327	337	352	rVB	156015	230817	42.54%	4.953%
4	2.526	452	462	479	rVB2	24661	41976	7.74%	0.901%
5	3.937	883	901	942	rBV2	41542	199522	36.77%	4.281%
6	4.365	1014	1034	1059	rBV	102881	261665	48.23%	5.615%
7	5.059	1235	1250	1283	rBV2	220534	542561	100.00%	11.642%
8	5.628	1414	1427	1448	rBV	184091	383345	70.65%	8.226%
9	5.924	1507	1519	1548	rBV	166327	335655	61.86%	7.202%
10	6.079	1555	1567	1585	rBV2	124807	259779	47.88%	5.574%
11	6.995	1841	1852	1873	rBV2	43491	82839	15.27%	1.778%
12	7.320	1942	1953	1974	rBV	247070	440367	81.16%	9.449%
13	7.632	2036	2050	2066	rBV	22592	42227	7.78%	0.906%
14	7.944	2138	2147	2155	rBV4	5476	10071	1.86%	0.216%
15	8.095	2182	2194	2236	rBV	158369	333857	61.53%	7.164%
16	8.853	2419	2430	2450	rBV	275938	455489	83.95%	9.774%
17	10.217	2843	2854	2870	rBV	82519	131161	24.17%	2.814%
18	10.381	2893	2905	2916	rVB	15367	24186	4.46%	0.519%
19	11.249	3163	3175	3198	rBV	242244	377037	69.49%	8.090%
20	11.625	3280	3292	3314	rBV	208245	331425	61.09%	7.112%

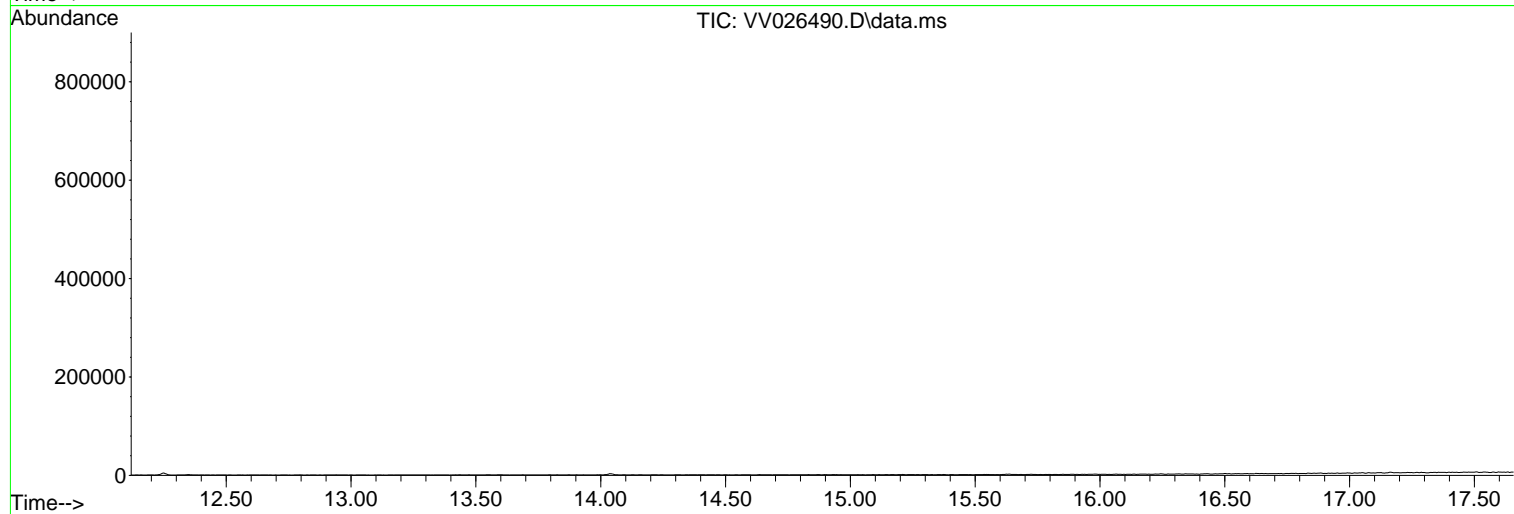
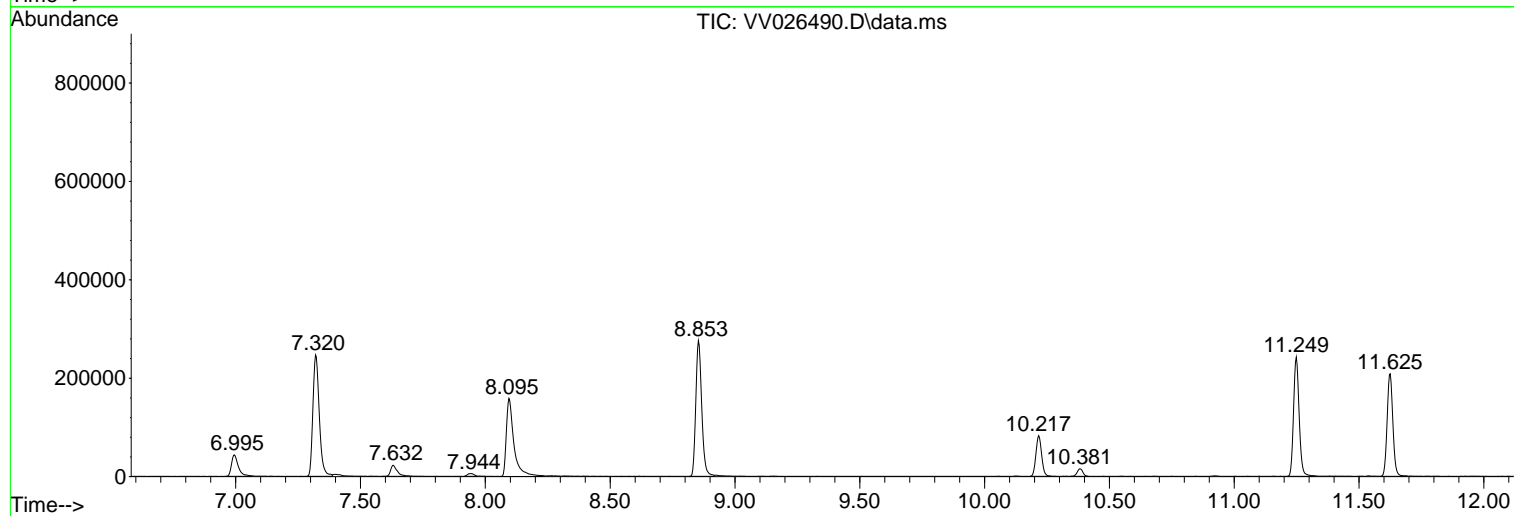
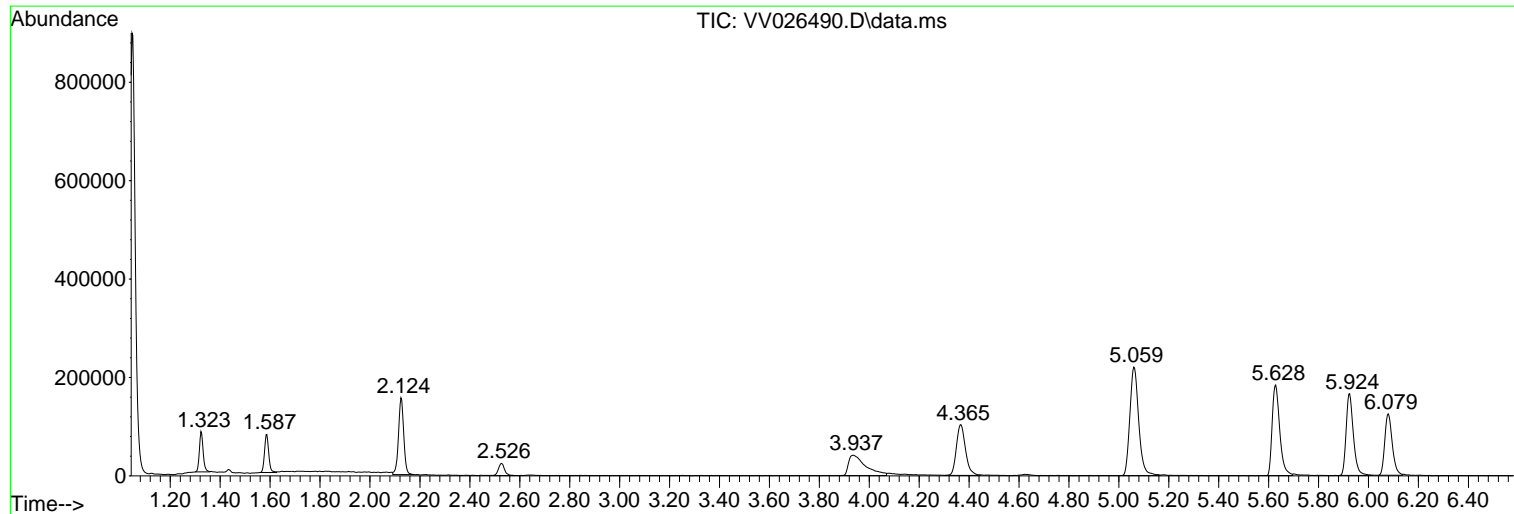
Sum of corrected areas: 4660374

Data Path : Z:\voasrv\HPCHEM1\MSVOA_V\Data\VV062122\
Data File : VV026490.D
Acq On : 21 Jun 2022 15:52
Operator : SY/MD
Sample : N3355-10DL 10X
Misc : 25mL/MSVOA_V/WATER
ALS Vial : 15 Sample Multiplier: 1

Instrument :
MSVOA_V
ClientSampleId :
EY0C8DL

Quant Method : Z:\voasrv\HPCHEM1\MSVOA_V\Method\SFAMVTR061522WMA.M
Quant Title : TRACE VOA SFAM1.0

TIC Library : C:\Database\NIST20.L
TIC Integration Parameters: LSCINT.P



Data Path : Z:\voasrv\HPCHEM1\MSVOA_V\Data\VV062122\
Data File : VV026490.D
Acq On : 21 Jun 2022 15:52
Operator : SY/MD
Sample : N3355-10DL 10X
Misc : 25mL/MSVOA_V/WATER
ALS Vial : 15 Sample Multiplier: 1

Instrument :
MSVOA_V
ClientSampleId :
EY0C8DL

Quant Method : Z:\voasrv\HPCHEM1\MSVOA_V\Method\SFAMVTR061522WMA.M
Quant Title : TRACE VOA SFAM1.0

TIC Library : C:\Database\NIST20.L
TIC Integration Parameters: LSCINT.P

No Library Search Compounds Detected

Data Path : Z:\voasrv\HPCHEM1\MSVOA_V\Data\VV062122\
Data File : VV026490.D
Acq On : 21 Jun 2022 15:52
Operator : SY/MD
Sample : N3355-10DL 10X
Misc : 25mL/MSVOA_V/WATER
ALS Vial : 15 Sample Multiplier: 1

Instrument :
MSVOA_V
ClientSampleId :
EY0C8DL

Quant Method : Z:\voasrv\HPCHEM1\MSVOA_V\Method\SFAMVTR061522WMA.M
Quant Title : TRACE VOA SFAM1.0

TIC Library : C:\Database\NIST0.L
TIC Integration Parameters: LSCINT.P

TIC Top Hit name	RT	EstConc	Units	Response	--Internal Standard--			
					#	RT	Resp	Conc
