

Data Path : Z:\voasrv\HPCHEM1\MSVOA_V\Data\VW062322\
 Data File : VW026550.D
 Acq On : 24 Jun 2022 13:05
 Operator : SY/MD
 Sample : N3401-15
 Misc : 25.0mL/MSVOA_V/WATER
 ALS Vial : 12 Sample Multiplier: 1

Instrument :
 MSVOA_V
 ClientSampleId :
 C0AG1

Quant Time: Jun 25 02:34:09 2022
 Quant Method : Z:\voasrv\HPCHEM1\MSVOA_V\Method\SFAMVTR062322WMA.M
 Quant Title : TRACE VOA SFAM1.0
 QLast Update : Sat Jun 25 02:21:54 2022
 Response via : Initial Calibration

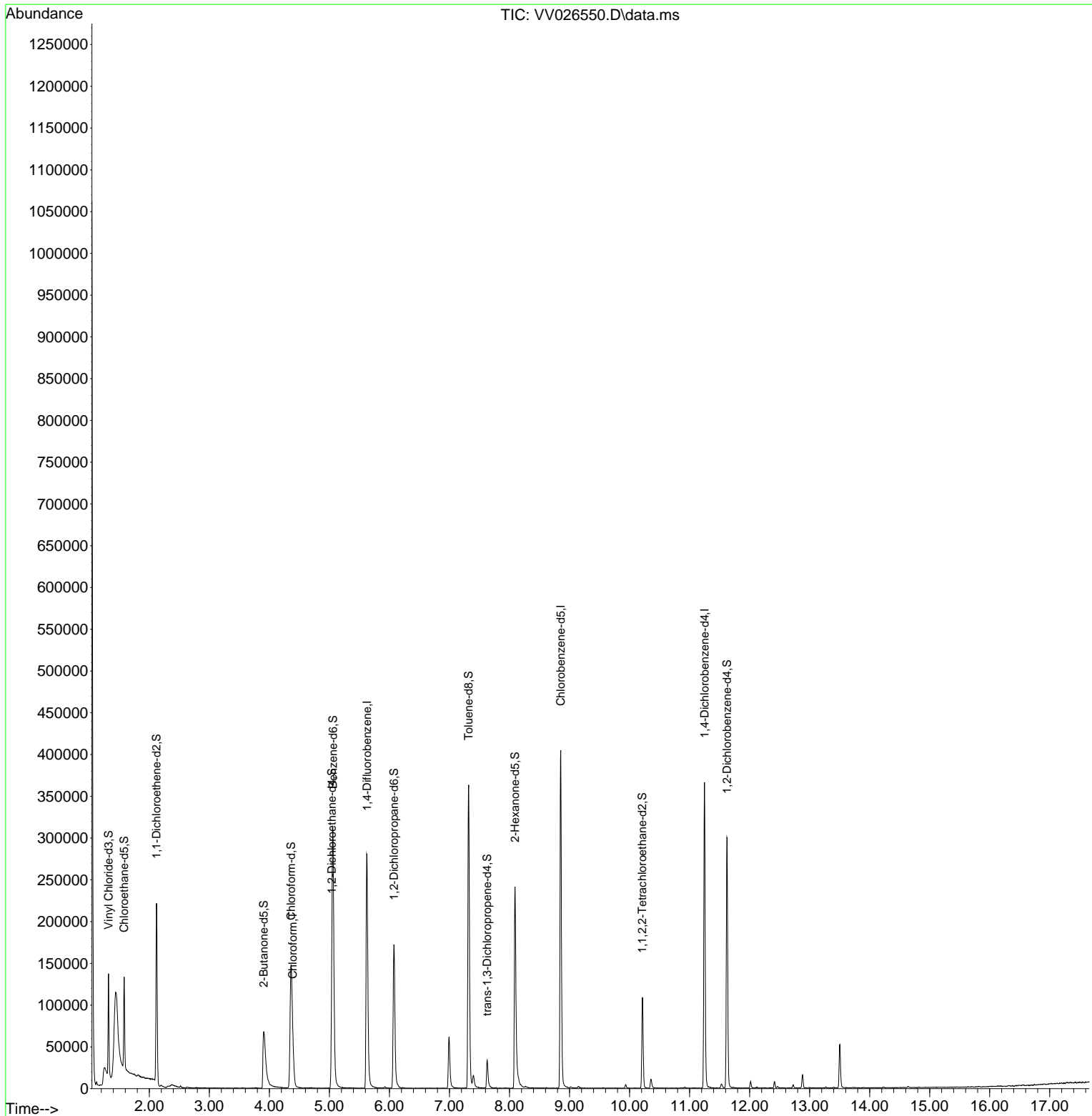
| Compound | R.T. | QIon | Response | Conc | Units | Dev(Min) |
|-------------------------------|--------|----------------|------------|----------|-------|----------|
| ----- | | | | | | |
| Internal Standards | | | | | | |
| 1) 1,4-Difluorobenzene | 5.625 | 114 | 255355 | 5.000 | ug/L | 0.00 |
| 28) Chlorobenzene-d5 | 8.854 | 117 | 232996 | 5.000 | ug/L | 0.00 |
| 58) 1,4-Dichlorobenzene-d4 | 11.249 | 152 | 98717 | 5.000 | ug/L | 0.00 |
| System Monitoring Compounds | | | | | | |
| 4) Vinyl Chloride-d3 | 1.320 | 65 | 83647 | 4.073 | ug/L | 0.00 |
| Spiked Amount | 5.000 | Range 40 - 130 | Recovery = | 81.400% | | |
| 7) Chloroethane-d5 | 1.581 | 69 | 71847 | 4.355 | ug/L | 0.00 |
| Spiked Amount | 5.000 | Range 65 - 130 | Recovery = | 87.000% | | |
| 11) 1,1-Dichloroethene-d2 | 2.121 | 63 | 113690 | 3.116 | ug/L | 0.00 |
| Spiked Amount | 5.000 | Range 60 - 125 | Recovery = | 62.400% | | |
| 20) 2-Butanone-d5 | 3.905 | 46 | 110871 | 54.304 | ug/L | 0.00 |
| Spiked Amount | 50.000 | Range 40 - 130 | Recovery = | 108.600% | | |
| 24) Chloroform-d | 4.362 | 84 | 148561 | 4.425 | ug/L | 0.00 |
| Spiked Amount | 5.000 | Range 70 - 125 | Recovery = | 88.600% | | |
| 26) 1,2-Dichloroethane-d4 | 5.040 | 65 | 61455 | 4.753 | ug/L | 0.00 |
| Spiked Amount | 5.000 | Range 70 - 130 | Recovery = | 95.000% | | |
| 32) Benzene-d6 | 5.059 | 84 | 306972 | 4.587 | ug/L | 0.00 |
| Spiked Amount | 5.000 | Range 70 - 125 | Recovery = | 91.800% | | |
| 36) 1,2-Dichloropropane-d6 | 6.076 | 67 | 89213 | 4.848 | ug/L | 0.00 |
| Spiked Amount | 5.000 | Range 60 - 140 | Recovery = | 97.000% | | |
| 41) Toluene-d8 | 7.320 | 98 | 256508 | 4.262 | ug/L | 0.00 |
| Spiked Amount | 5.000 | Range 70 - 130 | Recovery = | 85.200% | | |
| 43) trans-1,3-Dichloroprop... | 7.629 | 79 | 21728 | 4.568 | ug/L | 0.00 |
| Spiked Amount | 5.000 | Range 55 - 130 | Recovery = | 91.400% | | |
| 46) 2-Hexanone-d5 | 8.092 | 63 | 82670 | 45.626 | ug/L | 0.00 |
| Spiked Amount | 50.000 | Range 45 - 130 | Recovery = | 91.260% | | |
| 56) 1,1,2,2-Tetrachloroeth... | 10.214 | 84 | 53727 | 4.463 | ug/L | 0.00 |
| Spiked Amount | 5.000 | Range 65 - 120 | Recovery = | 89.200% | | |
| 66) 1,2-Dichlorobenzene-d4 | 11.625 | 152 | 81032 | 4.960 | ug/L | 0.00 |
| Spiked Amount | 5.000 | Range 80 - 120 | Recovery = | 99.200% | | |
| Target Compounds | | | | | | |
| 25) Chloroform | 4.388 | 83 | 45597 | 1.349 | ug/L | 97 |
| ----- | | | | | | |

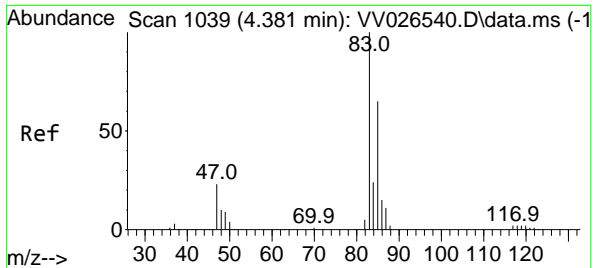
(#) = qualifier out of range (m) = manual integration (+) = signals summed

Data Path : Z:\voasrv\HPCHEM1\MSVOA_V\Data\VV062322\
 Data File : VV026550.D
 Acq On : 24 Jun 2022 13:05
 Operator : SY/MD
 Sample : N3401-15
 Misc : 25.0mL/MSVOA_V/WATER
 ALS Vial : 12 Sample Multiplier: 1

Instrument :
 MSVOA_V
 ClientSampleId :
 C0AG1

Quant Time: Jun 25 02:34:09 2022
 Quant Method : Z:\voasrv\HPCHEM1\MSVOA_V\Method\SFAMVTR062322WMA.M
 Quant Title : TRACE VOA SFAM1.0
 QLast Update : Sat Jun 25 02:21:54 2022
 Response via : Initial Calibration





#25
 Chloroform
 Concen: 1.349 ug/L
 RT: 4.388 min Scan# 10
 Delta R.T. 0.006 min
 Lab File: VV026550.D
 Acq: 24 Jun 2022 13:05

Instrument : MSVOA_V
 ClientSampleId : C0AG1

Tgt Ion: 83 Resp: 45597
 Ion Ratio Lower Upper
 83 100
 85 65.0 44.0 81.8

