

Data Path : Z:\VOASRV\HPCHEM1\MSVOA V\DATA\VV062419\  
 Data File : VV011738.D  
 Acq On : 24 Jun 2019 18:52  
 Operator : SY/MD  
 Sample : K3381-05  
 Misc : 25ML/MSVOA V/WATER  
 ALS Vial : 17 Sample Multiplier: 1

Instrument :  
 MSVOA\_V  
 ClientSampleId :

Quant Time: Jun 25 08:23:23 2019  
 Quant Method : Z:\VOASRV\HPCHEM1\MSVOA\_V\METHOD\SOMVTR062119WMA.M  
 Quant Title : TRACE VOA SOM01.0  
 QLast Update : Tue Jun 25 08:19:08 2019  
 Response via : Initial Calibration

Internal Standards	R.T.	QIon	Response	Conc	Units	Dev(Min)
1) 1,4-Difluorobenzene	5.66	114	151868	5.00	ug/L	0.00
28) Chlorobenzene-d5	8.89	117	143887	5.00	ug/L	0.00
60) 1,4-Dichlorobenzene-d4	11.29	152	59641	5.00	ug/L	0.00

## System Monitoring Compounds

4) Vinyl Chloride-d3	1.32	65	49861	4.94	ug/L	0.00
Spiked Amount	5.000	Range	40 - 130	Recovery	=	98.80%
7) Chloroethane-d5	1.57	69	38986	5.50	ug/L	0.00
Spiked Amount	5.000	Range	65 - 130	Recovery	=	110.00%
11) 1,1-Dichloroethene-d2	2.12	63	75871	3.70	ug/L	0.00
Spiked Amount	5.000	Range	60 - 125	Recovery	=	74.00%
20) 2-Butanone-d5	3.95	46	162350	61.14	ug/L	0.00
Spiked Amount	50.000	Range	40 - 130	Recovery	=	122.28%
24) Chloroform-d	4.40	84	100142	5.44	ug/L	0.00
Spiked Amount	5.000	Range	70 - 125	Recovery	=	108.80%
26) 1,2-Dichloroethane-d4	5.08	65	61751	5.59	ug/L	0.00
Spiked Amount	5.000	Range	70 - 130	Recovery	=	111.80%
32) Benzene-d6	5.09	84	213240	5.31	ug/L	0.00
Spiked Amount	5.000	Range	70 - 125	Recovery	=	106.20%
36) 1,2-Dichloropropane-d6	6.12	67	66931	5.41	ug/L	0.00
Spiked Amount	5.000	Range	60 - 140	Recovery	=	108.20%
41) Toluene-d8	7.36	98	180981	4.98	ug/L	0.00
Spiked Amount	5.000	Range	70 - 130	Recovery	=	99.60%
43) trans-1,3-Dichloropropene-	7.67	79	20841	4.83	ug/L	0.00
Spiked Amount	5.000	Range	55 - 130	Recovery	=	96.60%
46) 2-Hexanone-d5	8.13	63	122817	60.59	ug/L	0.00
Spiked Amount	50.000	Range	45 - 130	Recovery	=	121.18%
57) 1,1,2,2-Tetrachloroethane-	10.26	84	48162	5.60	ug/L	0.00
Spiked Amount	5.000	Range	65 - 120	Recovery	=	112.00%
64) 1,2-Dichlorobenzene-d4	11.67	152	63051	5.60	ug/L	0.00
Spiked Amount	5.000	Range	80 - 120	Recovery	=	112.00%

## Target Compounds

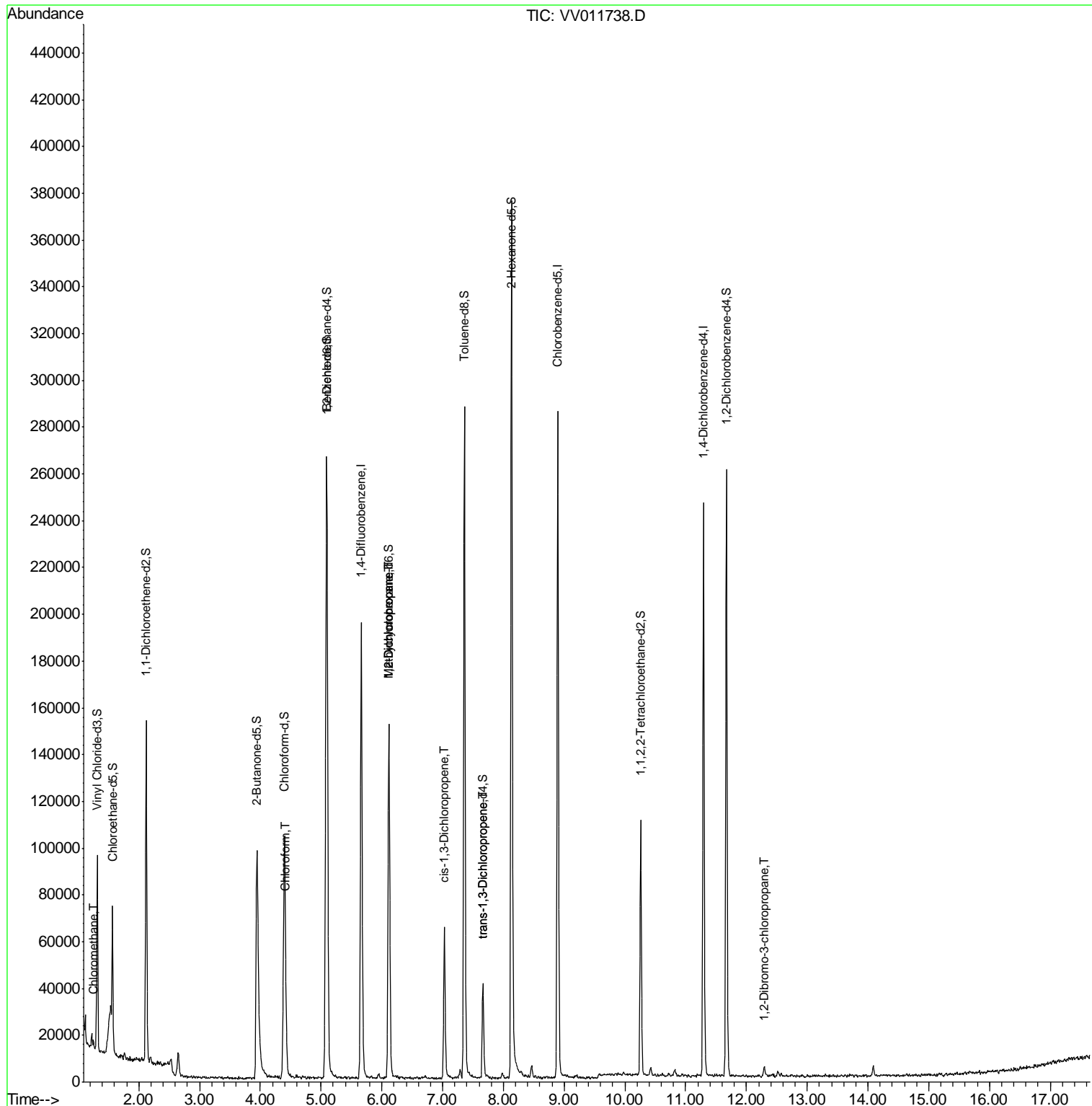
Target Compounds	R.T.	QIon	Response	Conc	Units	Ovalue
3) Chloromethane	1.25	50	2477	0.173	ug/L	86
25) Chloroform	4.42	83	6129	0.254	ug/L	97
35) Methylcyclohexane	6.12	83	16497	0.808	ug/L #	15
37) 1,2-Dichloropropane	6.12	63	8246	0.681	ug/L #	87
39) cis-1,3-Dichloropropene	7.03	75	1711	0.108	ug/L #	40
44) trans-1,3-Dichloropropene	7.67	75	1351	0.115	ug/L	83
66) 1,2-Dibromo-3-chloropropan	12.30	75	154	0.140	ug/L #	6

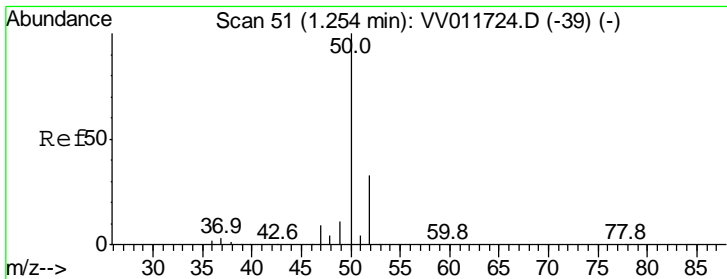
(#) = qualifier out of range (m) = manual integration (+) = signals summed

Data Path : Z:\VOASRV\HPCHEM1\MSVOA V\DATA\VV062419\  
 Data File : VV011738.D  
 Acq On : 24 Jun 2019 18:52  
 Operator : SY/MD  
 Sample : K3381-05  
 Misc : 25ML/MSVOA V/WATER  
 ALS Vial : 17 Sample Multiplier: 1

Instrument :  
 MSVOA\_V  
 ClientSampled :

Quant Time: Jun 25 08:23:23 2019  
 Quant Method : Z:\VOASRV\HPCHEM1\MSVOA\_V\METHOD\SOMVTR062119WMA.M  
 Quant Title : TRACE VOA SOM01.0  
 QLast Update : Tue Jun 25 08:19:08 2019  
 Response via : Initial Calibration

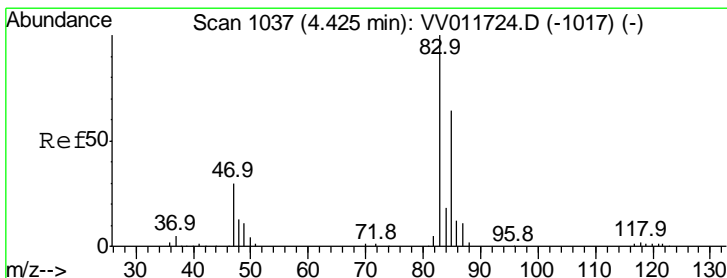
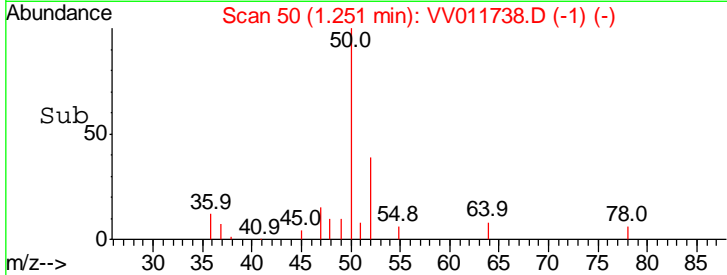
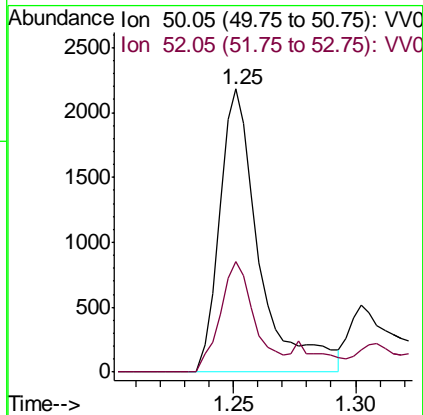
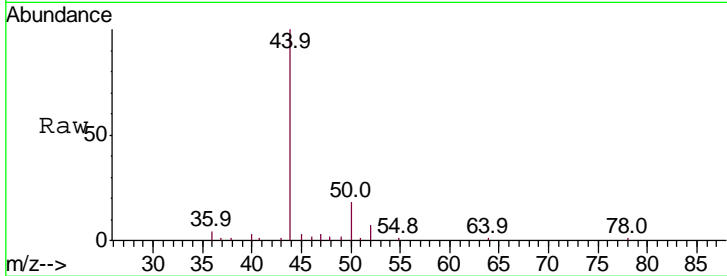




#3  
 Chloromethane  
 Concen: 0.173 ug/L  
 RT: 1.25 min Scan# 50  
 Delta R.T. -0.00 min  
 Lab File: VV011738.D  
 Acq: 24 Jun 2019 18:52

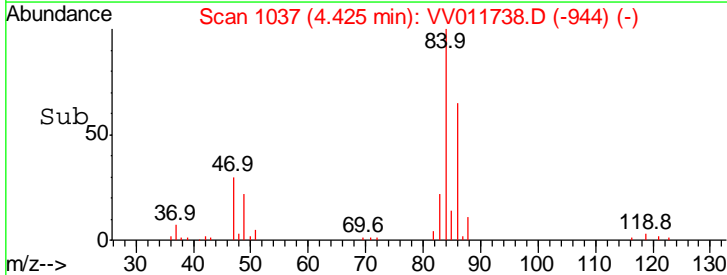
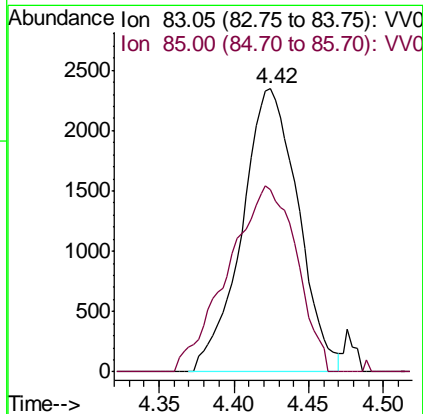
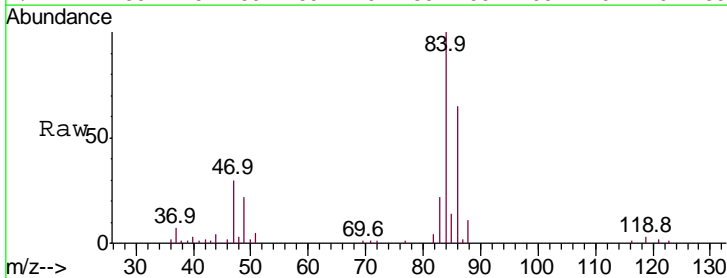
Instrument : MSVOA\_V  
 ClientSampled :

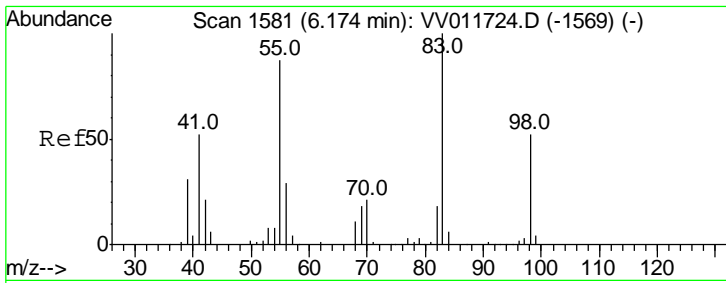
Tgt Ion	Resp	Lower	Upper
50	100		
52	39.1	22.0	40.8



#25  
 Chloroform  
 Concen: 0.254 ug/L  
 RT: 4.42 min Scan# 1037  
 Delta R.T. -0.00 min  
 Lab File: VV011738.D  
 Acq: 24 Jun 2019 18:52

Tgt Ion	Resp	Lower	Upper
83	100		
85	64.5	47.0	87.2

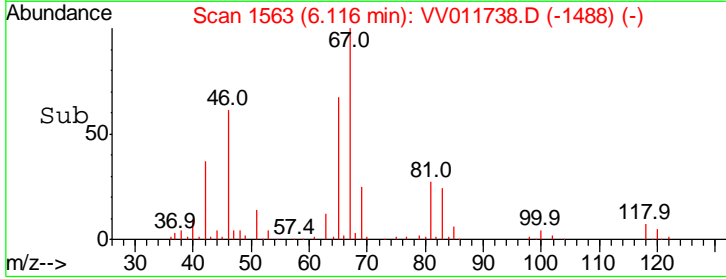
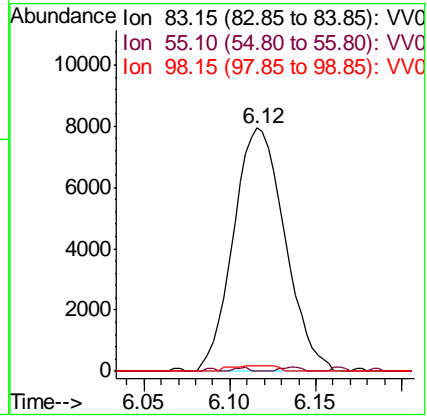
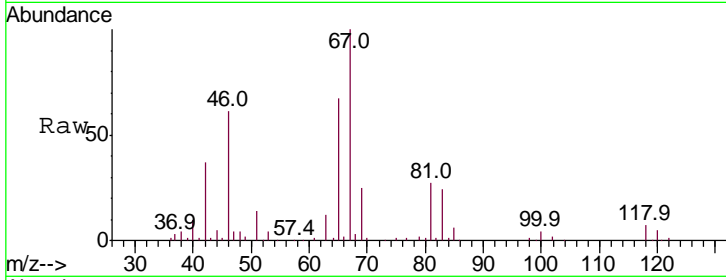




#35  
 Methylcyclohexane  
 Concen: 0.808 ug/L  
 RT: 6.12 min Scan# 1563  
 Delta R.T. -0.06 min  
 Lab File: VV011738.D  
 Acq: 24 Jun 2019 18:52

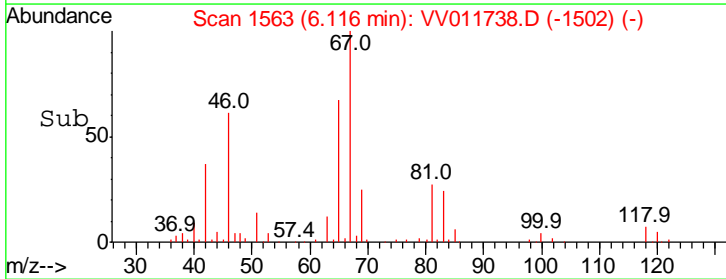
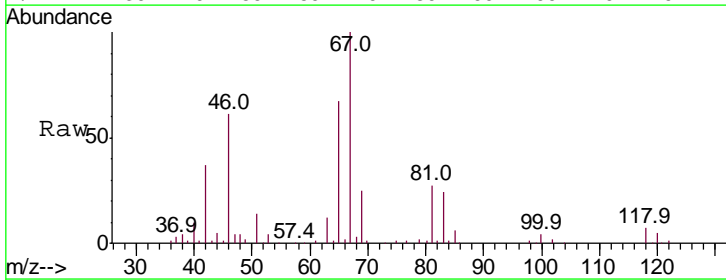
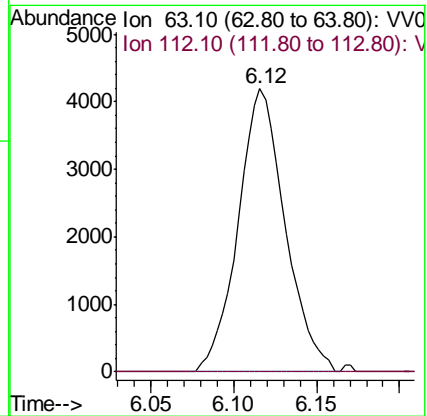
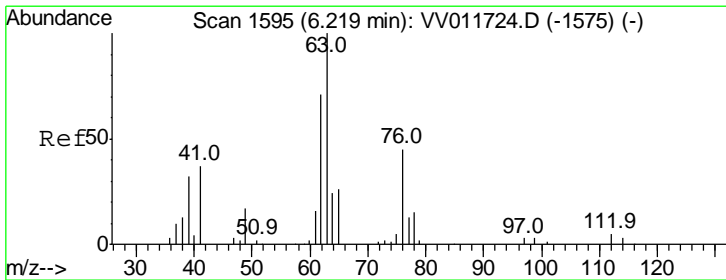
Instrument :  
 MSVOA\_V  
 ClientSampled :

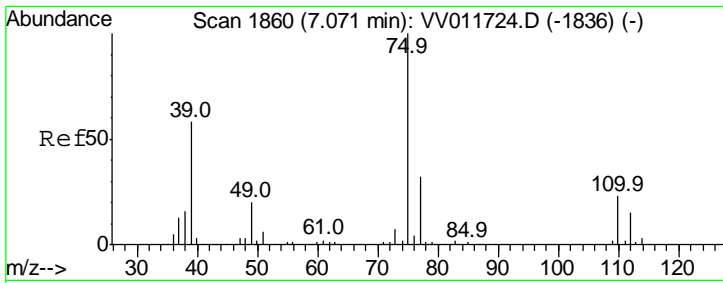
Tgt Ion	Resp	Lower	Upper
83	16497		
55	0.4	69.4	104.2#
98	2.1	40.2	60.4#



#37  
 1,2-Dichloropropane  
 Concen: 0.681 ug/L  
 RT: 6.12 min Scan# 1563  
 Delta R.T. -0.10 min  
 Lab File: VV011738.D  
 Acq: 24 Jun 2019 18:52

Tgt Ion	Resp	Lower	Upper
63	8246		
112	0.0	3.4	5.2#

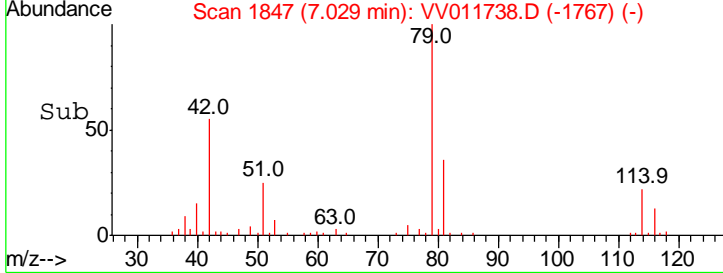
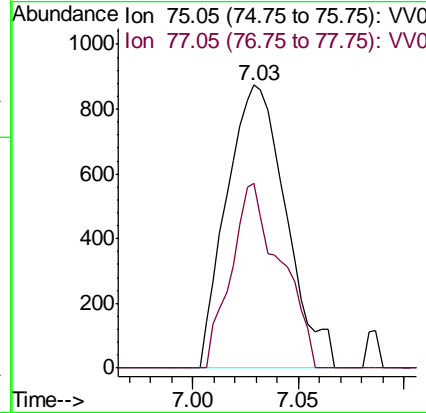
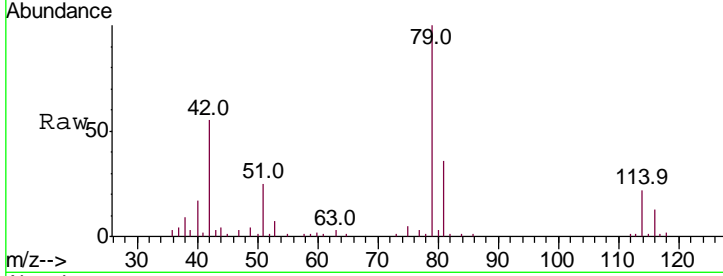




#39  
 cis-1,3-Dichloropropene  
 Concen: 0.108 ug/L  
 RT: 7.03 min Scan# 1847  
 Delta R.T. -0.04 min  
 Lab File: VV011738.D  
 Acq: 24 Jun 2019 18:52

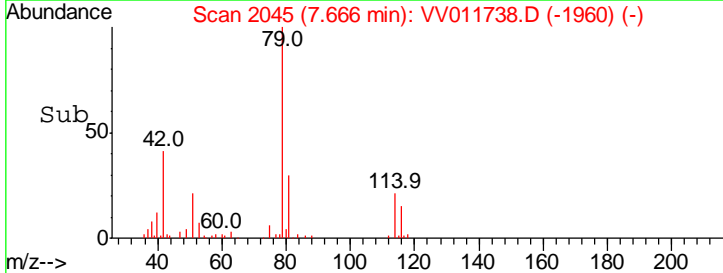
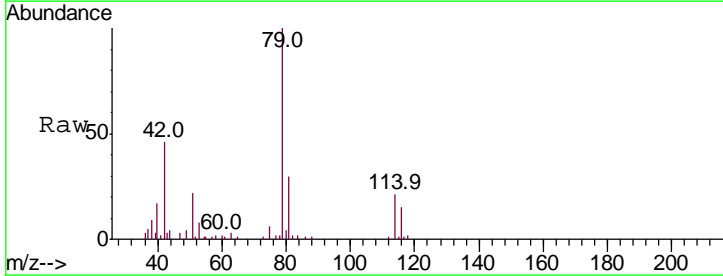
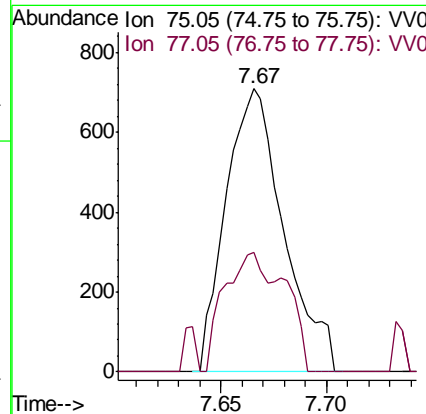
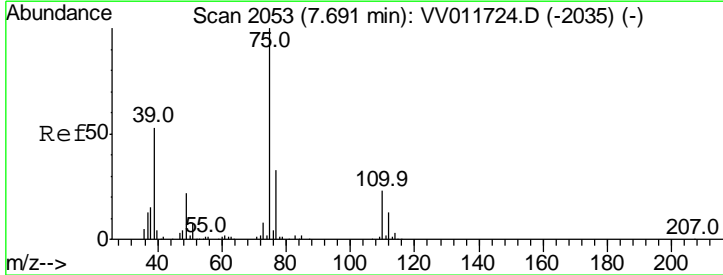
Instrument :  
 MSVOA\_V  
 ClientSampled :

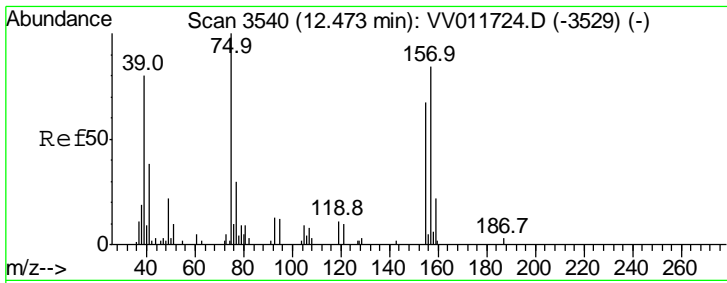
Tgt Ion: 75 Resp: 1711  
 Ion Ratio Lower Upper  
 75 100  
 77 65.4 22.4 41.6#



#44  
 trans-1,3-Dichloropropene  
 Concen: 0.115 ug/L  
 RT: 7.67 min Scan# 2045  
 Delta R.T. -0.03 min  
 Lab File: VV011738.D  
 Acq: 24 Jun 2019 18:52

Tgt Ion: 75 Resp: 1351  
 Ion Ratio Lower Upper  
 75 100  
 77 42.1 22.7 42.1



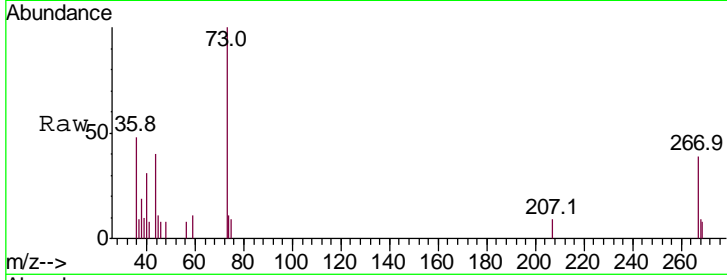


#66  
 1,2-Dibromo-3-chloropropane  
 Concen: 0.140 ug/L  
 RT: 12.30 min Scan# 3487  
 Delta R.T. -0.17 min  
 Lab File: VV011738.D  
 Acq: 24 Jun 2019 18:52

Instrument :  
 MSVOA\_V  
 ClientSampled :

Tot Ion: 75 Resp: 154

Ion	Ratio	Lower	Upper
75	100		
155	0.0	59.4	89.0#
157	0.0	77.5	116.3#



Abundance Ion 75.05 (74.75 to 75.75): VV0

Ion 154.95 (154.65 to 155.65): V

Ion 156.90 (156.60 to 157.60): V

