

Data Path : Z:\VOASRV\HPCHEM1\MSVOA V\DATA\VV062419\
 Data File : VV011741.D
 Acq On : 24 Jun 2019 20:09
 Operator : SY/MD
 Sample : K3462-01 2500X
 Misc : 25ML/MSVOA V/WATER
 ALS Vial : 20 Sample Multiplier: 1

Instrument :
 MSVOA_V
 ClientSampled :

Quant Time: Jun 25 08:23:42 2019
 Quant Method : Z:\VOASRV\HPCHEM1\MSVOA_V\METHOD\SOMVTR062119WMA.M
 Quant Title : TRACE VOA SOM01.0
 QLast Update : Tue Jun 25 08:19:08 2019
 Response via : Initial Calibration

Internal Standards	R.T.	QIon	Response	Conc	Units	Dev(Min)
1) 1,4-Difluorobenzene	5.66	114	163575	5.00	ug/L	0.00
28) Chlorobenzene-d5	8.89	117	153802	5.00	ug/L	0.00
60) 1,4-Dichlorobenzene-d4	11.30	152	64784	5.00	ug/L	0.00

System Monitoring Compounds

4) Vinyl Chloride-d3	1.32	65	51901	4.78	ug/L	0.00
Spiked Amount	5.000	Range	40 - 130	Recovery	=	95.60%
7) Chloroethane-d5	1.57	69	35619	4.67	ug/L	0.00
Spiked Amount	5.000	Range	65 - 130	Recovery	=	93.40%
11) 1,1-Dichloroethene-d2	2.12	63	105159	4.76	ug/L	0.00
Spiked Amount	5.000	Range	60 - 125	Recovery	=	95.20%
20) 2-Butanone-d5	3.95	46	168142	58.79	ug/L	0.00
Spiked Amount	50.000	Range	40 - 130	Recovery	=	117.58%
24) Chloroform-d	4.40	84	106510	5.38	ug/L	0.00
Spiked Amount	5.000	Range	70 - 125	Recovery	=	107.60%
26) 1,2-Dichloroethane-d4	5.08	65	64338	5.41	ug/L	0.00
Spiked Amount	5.000	Range	70 - 130	Recovery	=	108.20%
32) Benzene-d6	5.09	84	221029	5.15	ug/L	0.00
Spiked Amount	5.000	Range	70 - 125	Recovery	=	103.00%
36) 1,2-Dichloropropane-d6	6.12	67	69504	5.26	ug/L	0.00
Spiked Amount	5.000	Range	60 - 140	Recovery	=	105.20%
41) Toluene-d8	7.36	98	189654	4.88	ug/L	0.00
Spiked Amount	5.000	Range	70 - 130	Recovery	=	97.60%
43) trans-1,3-Dichloropropene-	7.66	79	21849	4.74	ug/L	0.00
Spiked Amount	5.000	Range	55 - 130	Recovery	=	94.80%
46) 2-Hexanone-d5	8.13	63	127395	58.80	ug/L	0.00
Spiked Amount	50.000	Range	45 - 130	Recovery	=	117.60%
57) 1,1,2,2-Tetrachloroethane-	10.26	84	48818	5.31	ug/L	0.00
Spiked Amount	5.000	Range	65 - 120	Recovery	=	106.20%
64) 1,2-Dichlorobenzene-d4	11.67	152	63887	5.23	ug/L	0.00
Spiked Amount	5.000	Range	80 - 120	Recovery	=	104.60%

Target Compounds

Target Compounds	R.T.	QIon	Response	Conc	Units	Ovalue
3) Chloromethane	1.25	50	2528	0.164	ug/L	96
8) Chloroethane	1.59	64	3272	0.414	ug/L	87
10) 1,1,2-Trichloro-1,2,2-trif	2.13	101	7180	0.647	ug/L	98
12) 1,1-Dichloroethene	2.13	96	45363	4.481	ug/L	96
16) Methylene chloride	2.53	84	2664	0.236	ug/L	89
19) 1,1-Dichloroethane	3.22	63	65150	2.754	ug/L	99
22) cis-1,2-Dichloroethene	3.96	96	130539	9.981	ug/L	99
25) Chloroform	4.42	83	4991	0.192	ug/L	98
29) 1,1,1-Trichloroethane	4.65	97	780439	39.410	ug/L	98
31) Carbon tetrachloride	4.65	117	95139	5.683	ug/L	100
34) Trichloroethene	5.95	95	25145	1.860	ug/L	98
35) Methylcyclohexane	6.12	83	17385	0.796	ug/L #	15
37) 1,2-Dichloropropane	6.12	63	8777	0.678	ug/L #	87
39) cis-1,3-Dichloropropene	7.03	75	2061	0.121	ug/L #	56
42) Toluene	7.43	91	178565	3.351	ug/L	100
44) trans-1,3-Dichloropropene	7.66	75	1217	0.097	ug/L	97
47) Tetrachloroethene	8.02	164	7218	0.717	ug/L	94

Data Path : Z:\VOASRV\HPCHEM1\MSVOA V\DATA\VV062419\
 Data File : VV011741.D
 Acq On : 24 Jun 2019 20:09
 Operator : SY/MD
 Sample : K3462-01 2500X
 Misc : 25ML/MSVOA V/WATER
 ALS Vial : 20 Sample Multiplier: 1

Instrument :
 MSVOA_V
 ClientSampleId :

Quant Time: Jun 25 08:23:42 2019
 Quant Method : Z:\VOASRV\HPCHEM1\MSVOA_V\METHOD\SOMVTR062119WMA.M
 Quant Title : TRACE VOA SOM01.0
 QLast Update : Tue Jun 25 08:19:08 2019
 Response via : Initial Calibration

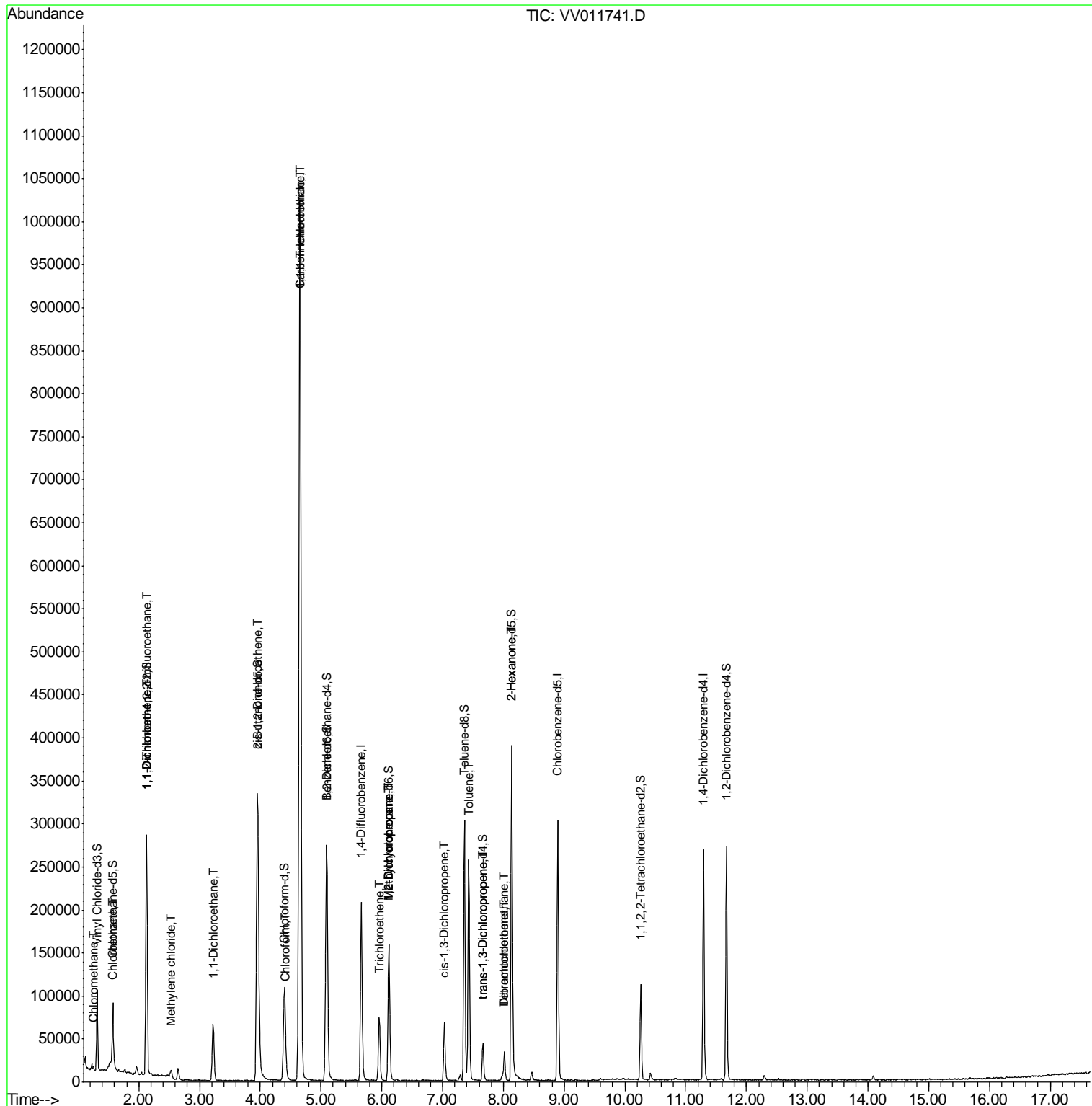
Internal Standards	R.T.	QIon	Response	Conc	Units	Dev(Min)
48) 2-Hexanone	8.13	43	17538	3.072	ug/L #	70
49) Dibromochloromethane	8.02	129	6568	0.795	ug/L #	11

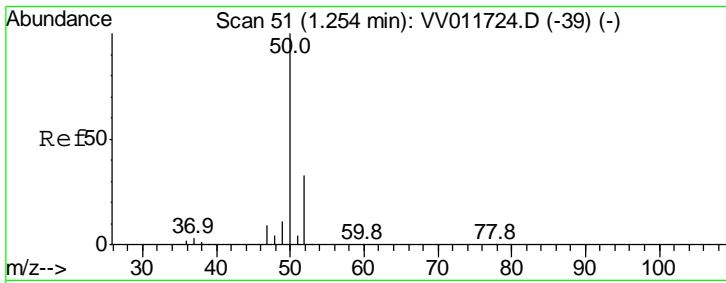
(#) = qualifier out of range (m) = manual integration (+) = signals summed

Data Path : Z:\VOASRV\HPCHEM1\MSVOA V\DATA\VV062419\
Data File : VV011741.D
Acq On : 24 Jun 2019 20:09
Operator : SY/MD
Sample : K3462-01 2500X
Misc : 25ML/MSVOA V/WATER
ALS Vial : 20 Sample Multiplier: 1

Instrument :
MSVOA_V
ClientSampled :

Quant Time: Jun 25 08:23:42 2019
Quant Method : Z:\VOASRV\HPCHEM1\MSVOA_V\METHOD\SOMVTR062119WMA.M
Quant Title : TRACE VOA SOM01.0
QLast Update : Tue Jun 25 08:19:08 2019
Response via : Initial Calibration

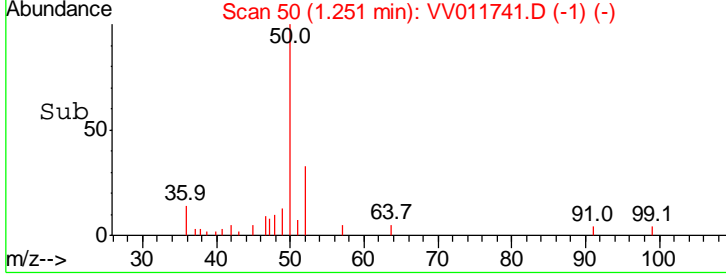
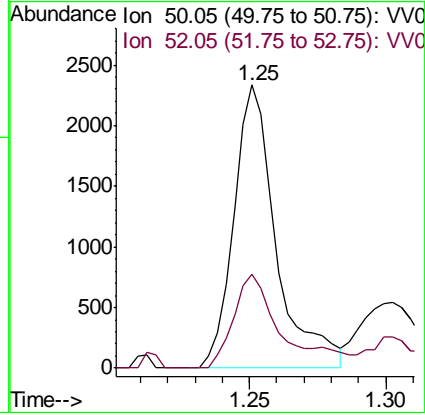
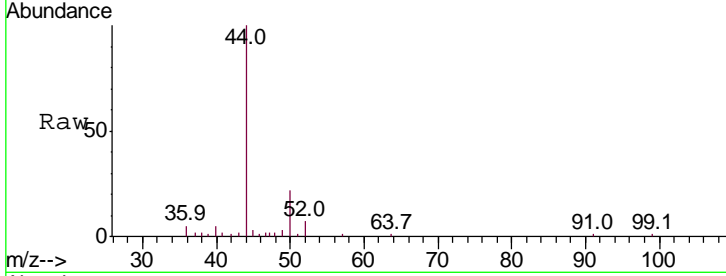




#3
 Chloromethane
 Concen: 0.164 ug/L
 RT: 1.25 min Scan# 50
 Delta R.T. -0.00 min
 Lab File: VV011741.D
 Acq: 24 Jun 2019 20:09

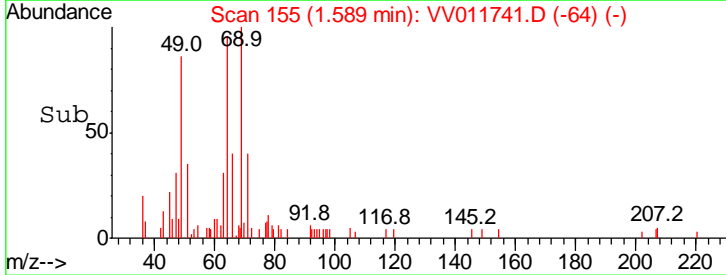
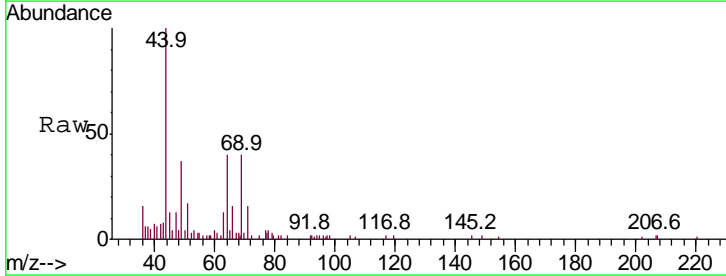
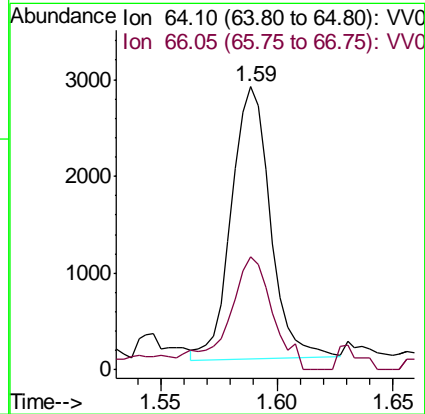
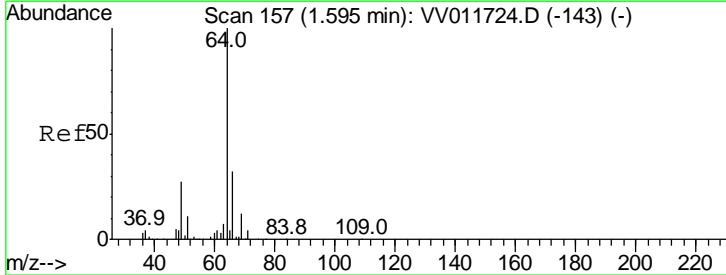
Instrument :
 MSVOA_V
 ClientSampled :

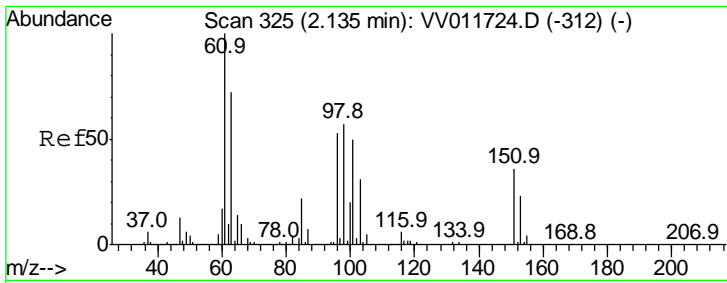
Tgt Ion	Resp	Lower	Upper
50	100		
52	33.4	22.0	40.8



#8
 Chloroethane
 Concen: 0.414 ug/L
 RT: 1.59 min Scan# 155
 Delta R.T. -0.01 min
 Lab File: VV011741.D
 Acq: 24 Jun 2019 20:09

Tgt Ion	Resp	Lower	Upper
64	100		
66	36.4	20.6	38.4





#10

1,1,2-Trichloro-1,2,2-trifluoroethane

Concen: 0.647 ug/L

RT: 2.13 min Scan# 323

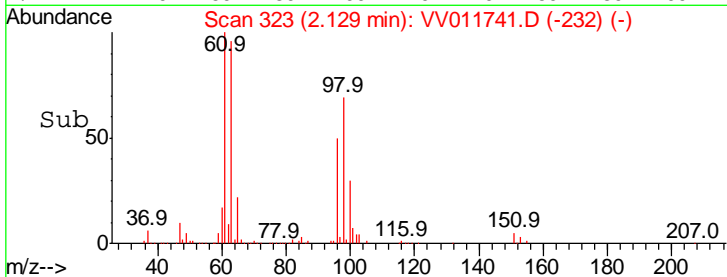
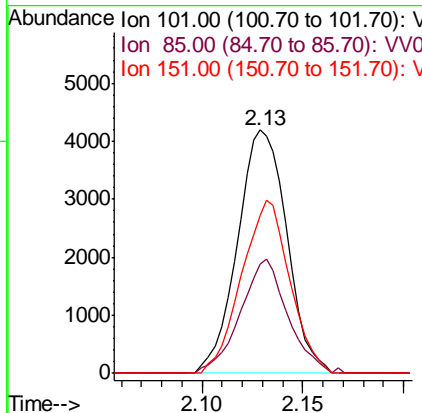
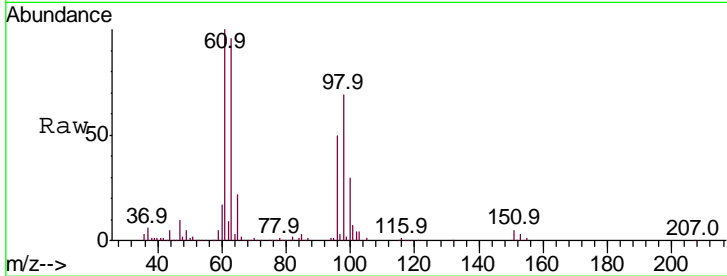
Delta R.T. -0.01 min

Lab File: VV011741.D

Acq: 24 Jun 2019 20:09

Instrument :
MSVOA_V
ClientSampled :

Tgt Ion	Resp	Lower	Upper
101	100		
85	45.0	35.9	53.9
151	69.4	57.4	86.2



#12

1,1-Dichloroethene

Concen: 4.481 ug/L

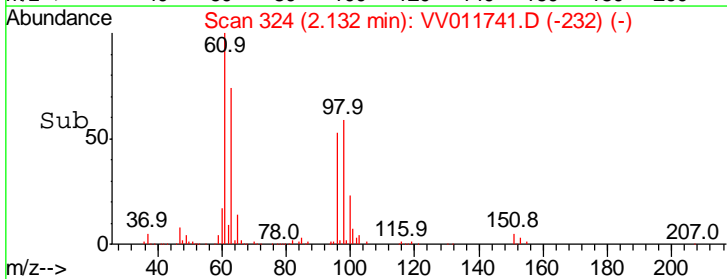
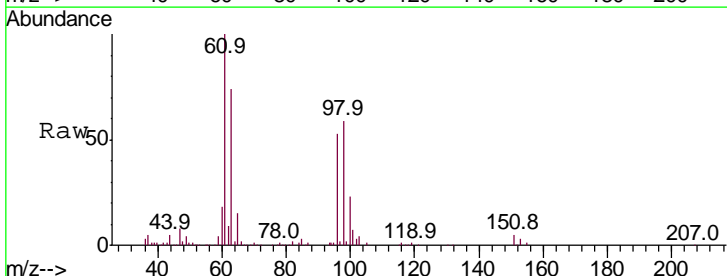
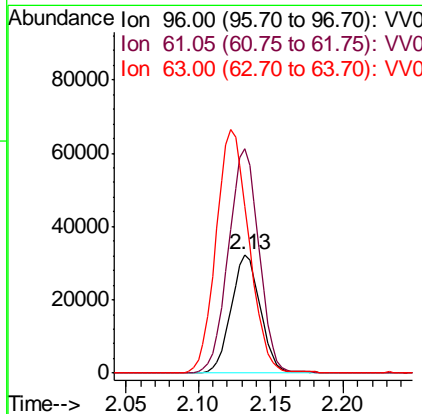
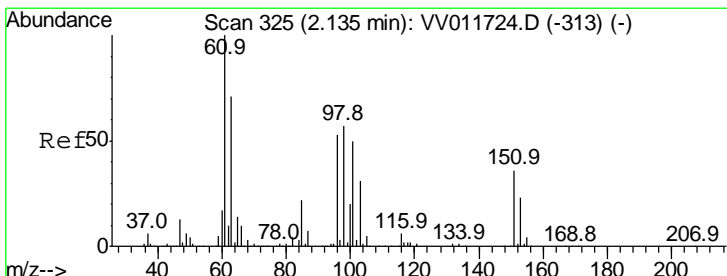
RT: 2.13 min Scan# 324

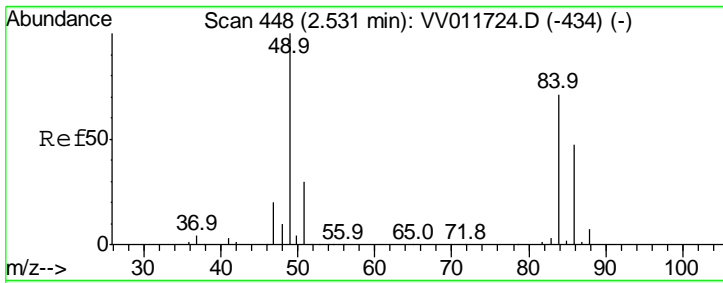
Delta R.T. -0.00 min

Lab File: VV011741.D

Acq: 24 Jun 2019 20:09

Tgt Ion	Resp	Lower	Upper
96	100		
61	189.3	131.5	244.1
63	140.9	91.8	170.4

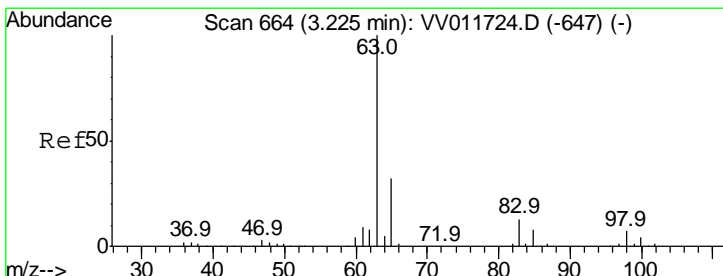
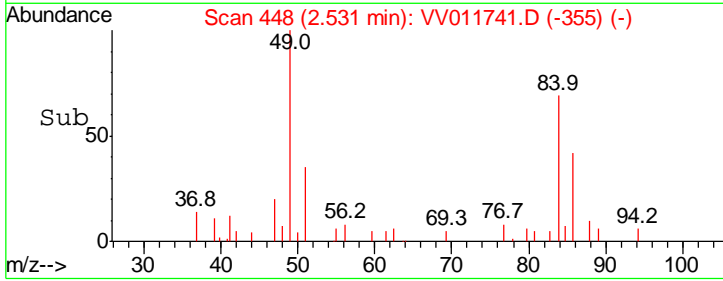
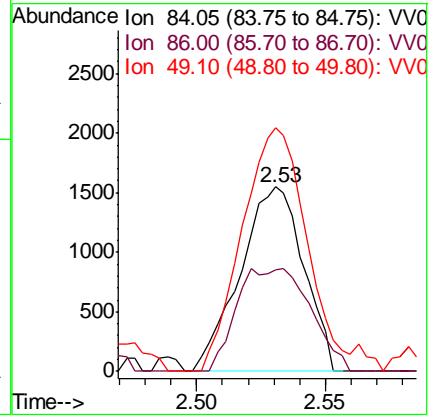
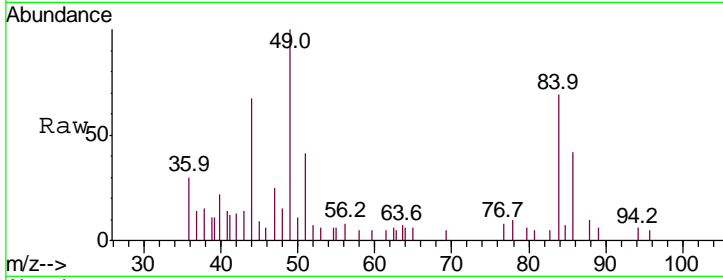




#16
 Methylene chloride
 Concen: 0.236 ug/L
 RT: 2.53 min Scan# 448
 Delta R.T. -0.00 min
 Lab File: VV011741.D
 Acq: 24 Jun 2019 20:09

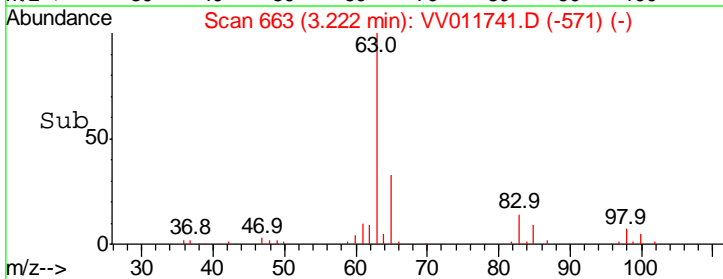
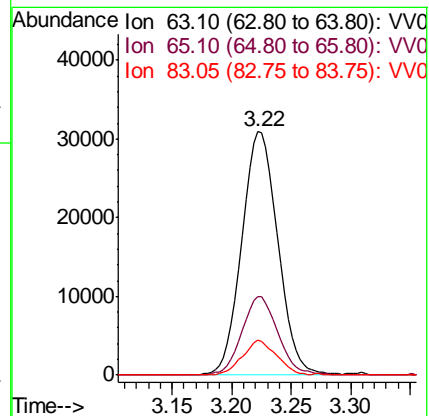
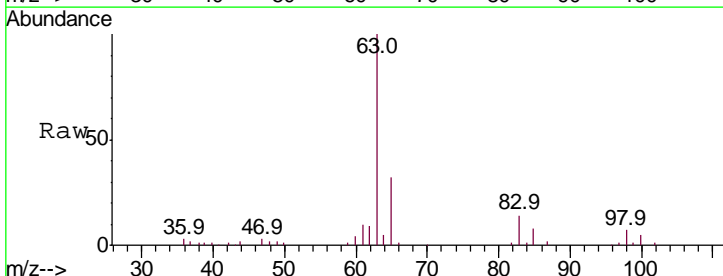
Instrument :
 MSVOA_V
 ClientSampled :

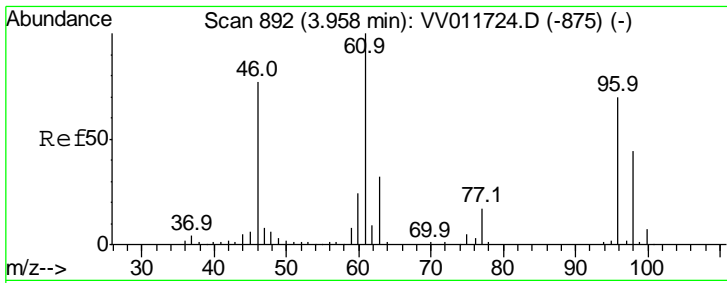
Tgt Ion	Resp	Lower	Upper
84	100		
86	55.2	44.9	83.5
49	132.2	101.4	188.2



#19
 1,1-Dichloroethane
 Concen: 2.754 ug/L
 RT: 3.22 min Scan# 663
 Delta R.T. -0.00 min
 Lab File: VV011741.D
 Acq: 24 Jun 2019 20:09

Tgt Ion	Resp	Lower	Upper
63	100		
65	32.5	23.0	42.8
83	14.3	9.5	17.7

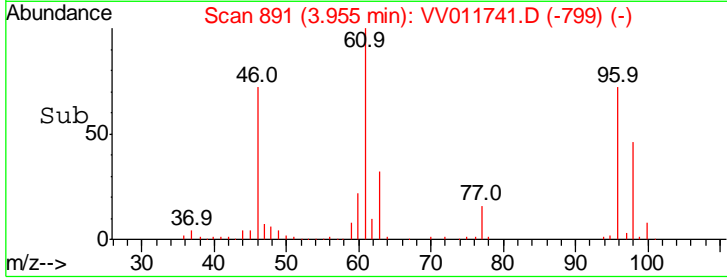
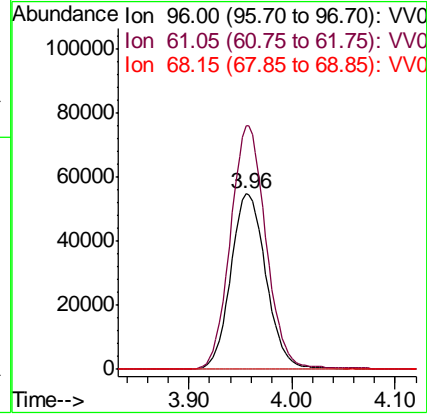
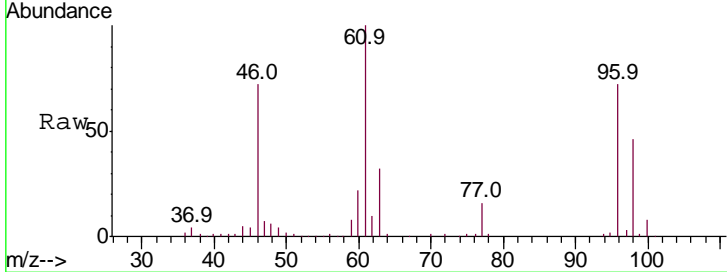




#22
 cis-1,2-Dichloroethene
 Concen: 9.981 ug/L
 RT: 3.96 min Scan# 891
 Delta R.T. -0.00 min
 Lab File: VV011741.D
 Acq: 24 Jun 2019 20:09

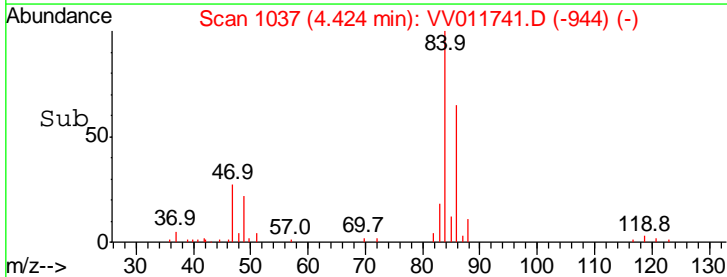
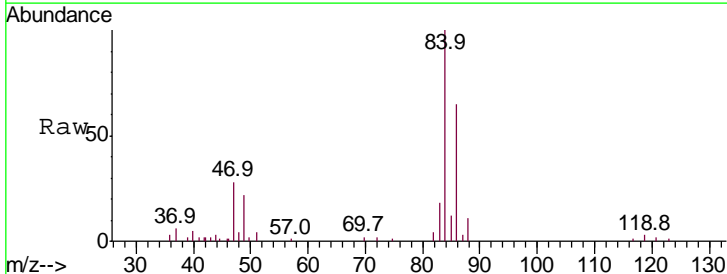
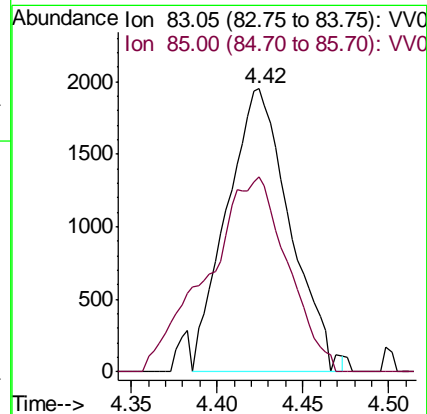
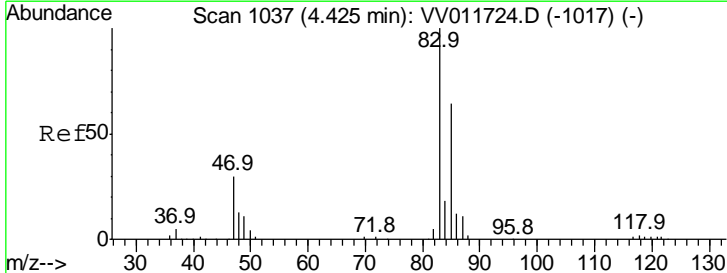
Instrument :
 MSVOA_V
 ClientSampled :

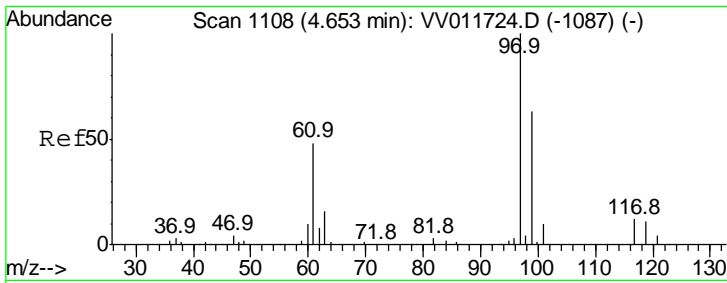
Tgt Ion	Resp	Lower	Upper
96	130539		
61	138.5	97.9	181.7
68	0.0	0.0	0.0



#25
 Chloroform
 Concen: 0.192 ug/L
 RT: 4.42 min Scan# 1037
 Delta R.T. -0.00 min
 Lab File: VV011741.D
 Acq: 24 Jun 2019 20:09

Tgt Ion	Resp	Lower	Upper
83	4991		
85	68.9	47.0	87.2

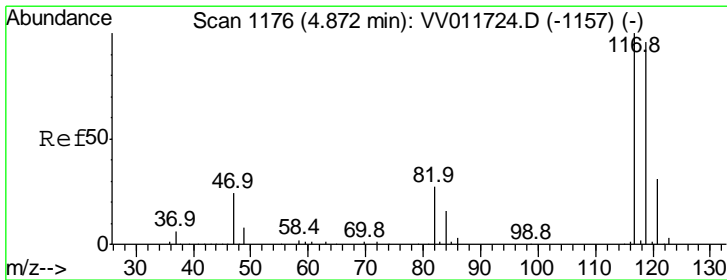
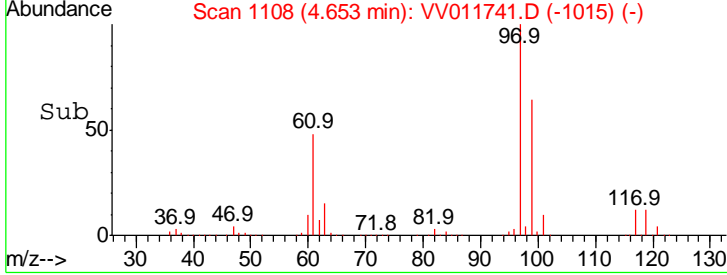
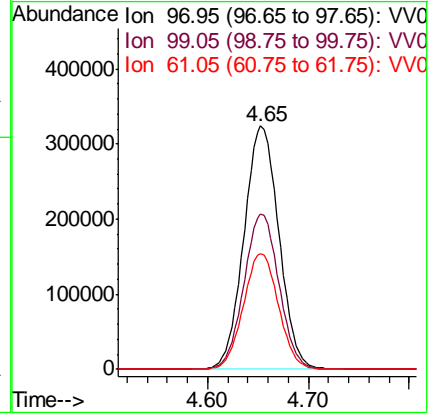
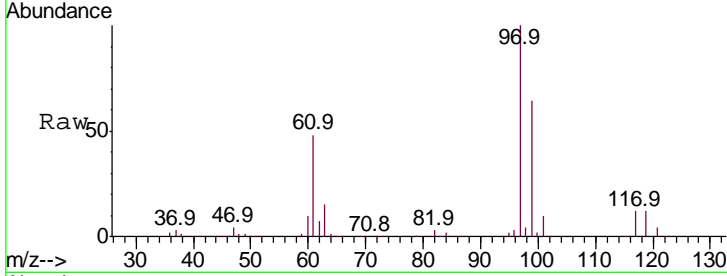




#29
 1,1,1-Trichloroethane
 Concen: 39.410 ug/L
 RT: 4.65 min Scan# 1108
 Delta R.T. -0.00 min
 Lab File: VV011741.D
 Acq: 24 Jun 2019 20:09

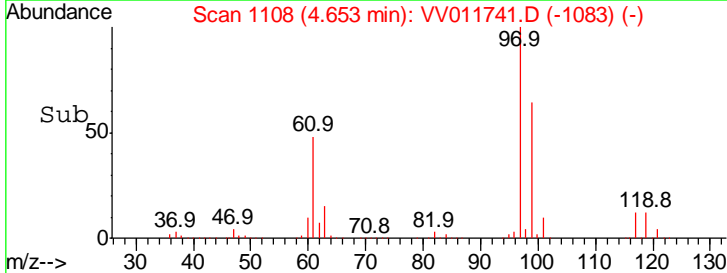
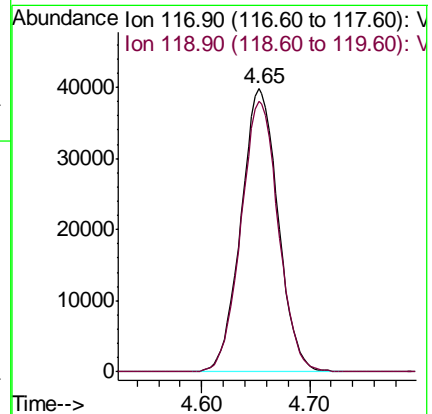
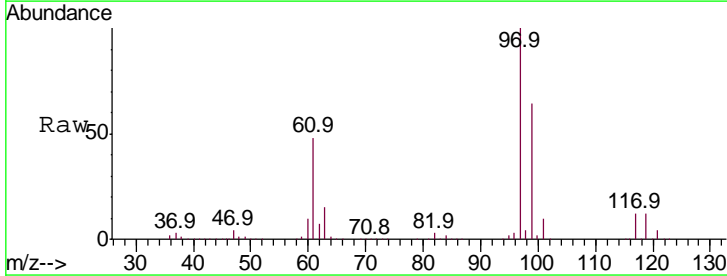
Instrument :
 MSVOA_V
 ClientSampled :

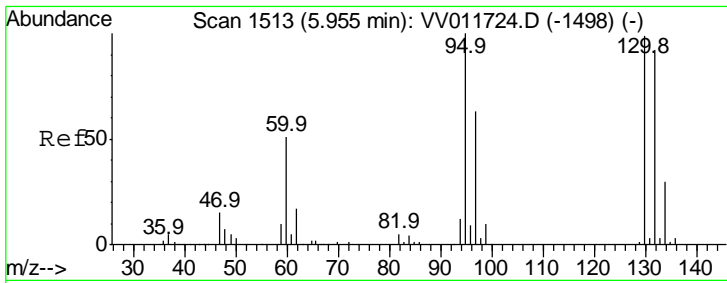
Tgt Ion	Resp	Lower	Upper
97	100		
99	63.9	51.6	77.4
61	47.9	39.8	59.6



#31
 Carbon tetrachloride
 Concen: 5.683 ug/L
 RT: 4.65 min Scan# 1108
 Delta R.T. -0.22 min
 Lab File: VV011741.D
 Acq: 24 Jun 2019 20:09

Tgt Ion	Resp	Lower	Upper
117	100		
119	96.1	77.1	115.7

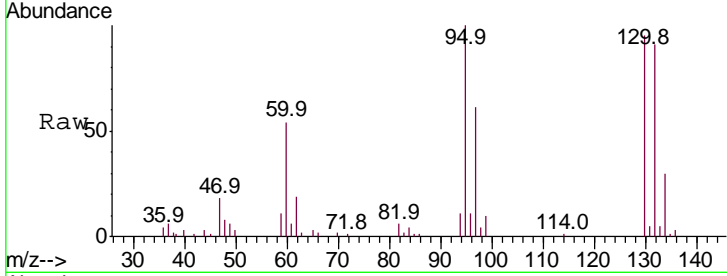




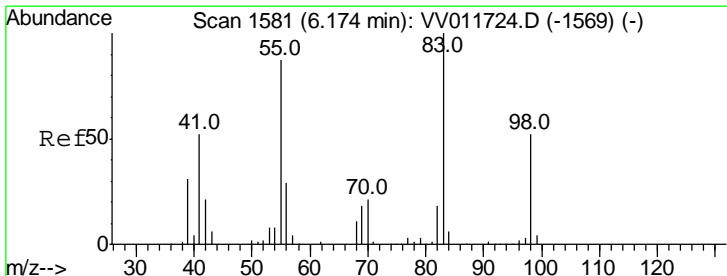
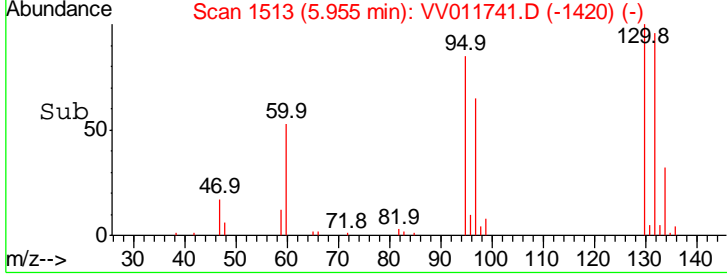
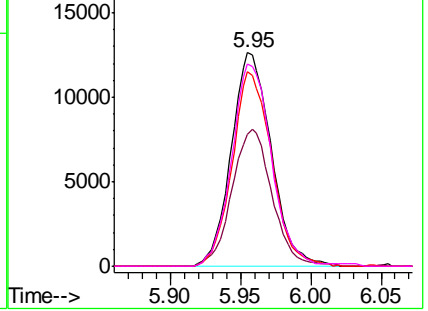
#34
 Trichloroethene
 Concen: 1.860 ug/L
 RT: 5.95 min Scan# 1513
 Delta R.T. -0.00 min
 Lab File: VV011741.D
 Acq: 24 Jun 2019 20:09

Instrument :
 MSVOA_V
 ClientSampled :

Tgt Ion	Resp	Lower	Upper
95	100		
97	61.5	44.4	82.5
132	91.0	65.0	120.6
130	94.5	67.1	124.7

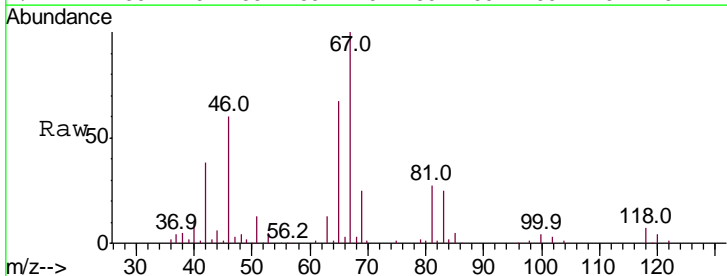


Abundance Ion 95.00 (94.70 to 95.70): VV0
 Ion 96.95 (96.65 to 97.65): VV0
 Ion 131.95 (131.65 to 132.65): V
 Ion 129.95 (129.65 to 130.65): V

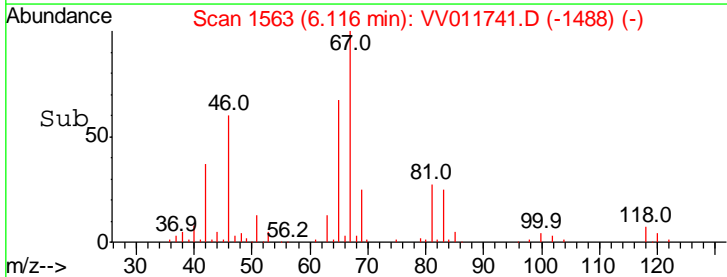
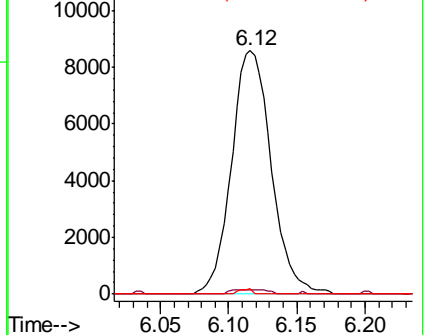


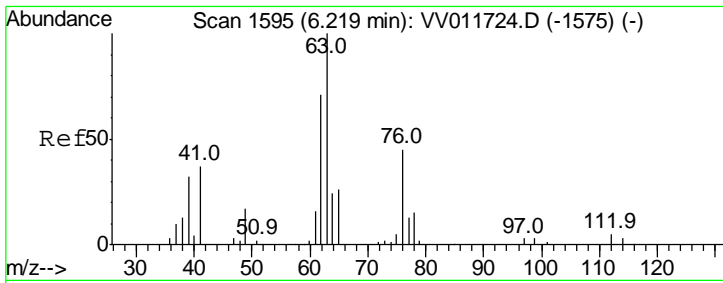
#35
 Methylcyclohexane
 Concen: 0.796 ug/L
 RT: 6.12 min Scan# 1563
 Delta R.T. -0.06 min
 Lab File: VV011741.D
 Acq: 24 Jun 2019 20:09

Tgt Ion	Resp	Lower	Upper
83	100		
55	0.6	69.4	104.2#
98	0.7	40.2	60.4#



Abundance Ion 83.15 (82.85 to 83.85): VV0
 Ion 55.10 (54.80 to 55.80): VV0
 Ion 98.15 (97.85 to 98.85): VV0

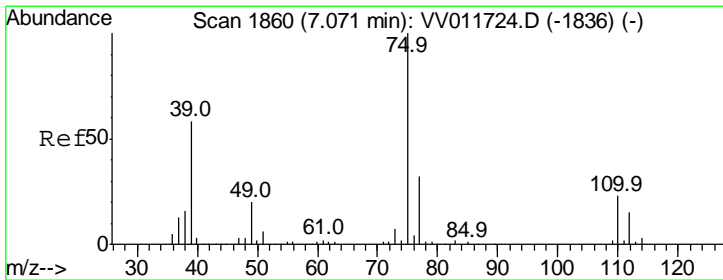
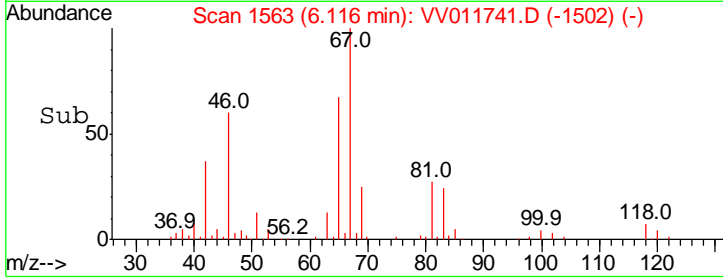
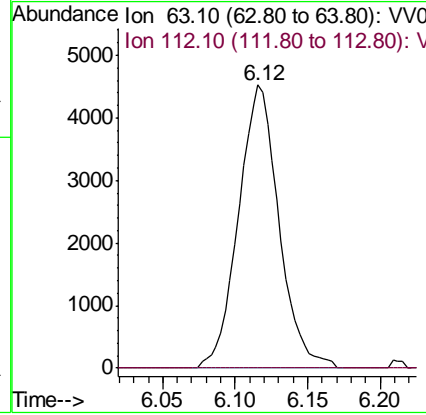
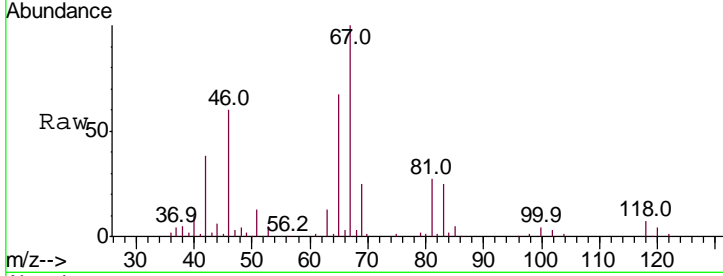




#37
 1,2-Dichloropropane
 Concen: 0.678 ug/L
 RT: 6.12 min Scan# 1563
 Delta R.T. -0.10 min
 Lab File: VV011741.D
 Acq: 24 Jun 2019 20:09

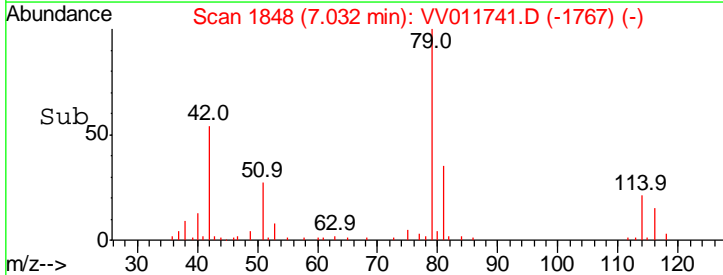
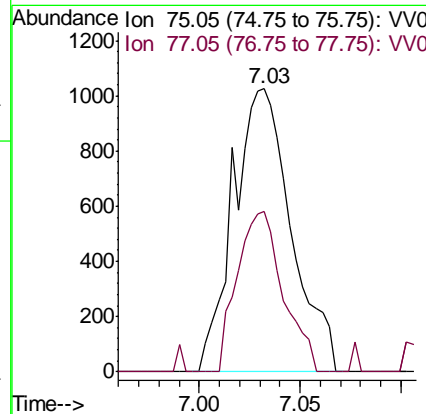
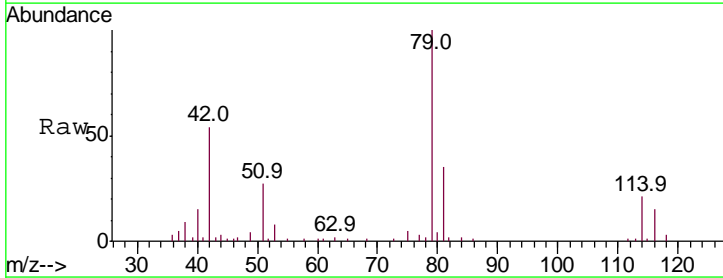
Instrument : MSVOA_V
 Client Sampled :

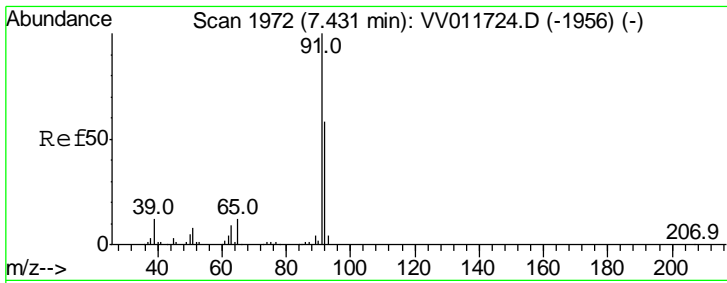
Tgt Ion	Resp	Lower	Upper
63	100		
112	0.0	3.4	5.2#



#39
 cis-1,3-Dichloropropene
 Concen: 0.121 ug/L
 RT: 7.03 min Scan# 1848
 Delta R.T. -0.04 min
 Lab File: VV011741.D
 Acq: 24 Jun 2019 20:09

Tgt Ion	Resp	Lower	Upper
75	100		
77	56.8	22.4	41.6#

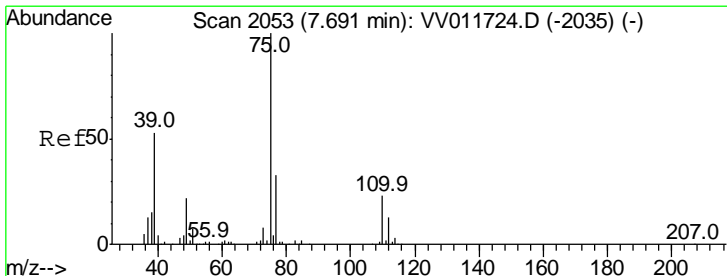
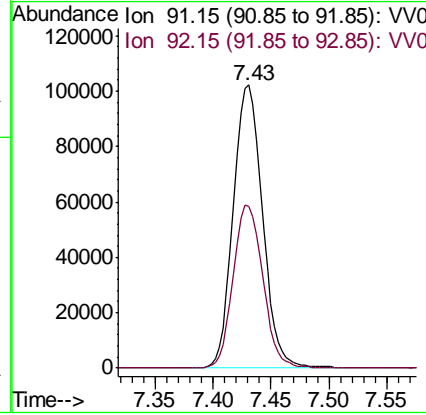
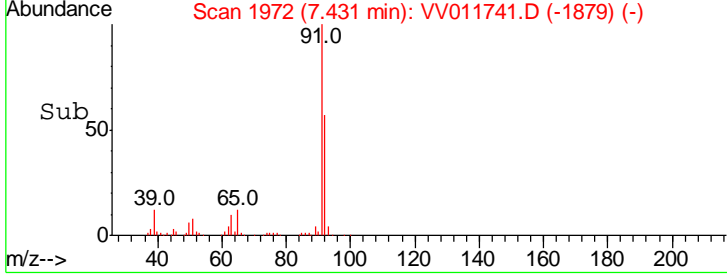
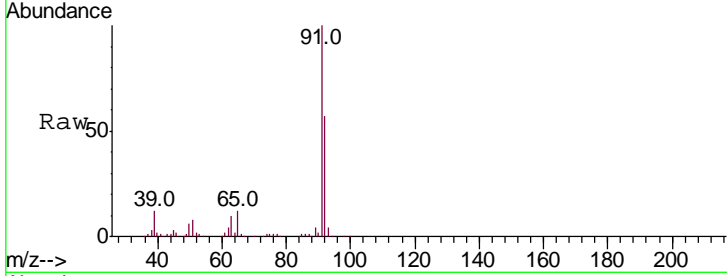




#42
 Toluene
 Concen: 3.351 ug/L
 RT: 7.43 min Scan# 1972
 Delta R.T. -0.00 min
 Lab File: VV011741.D
 Acq: 24 Jun 2019 20:09

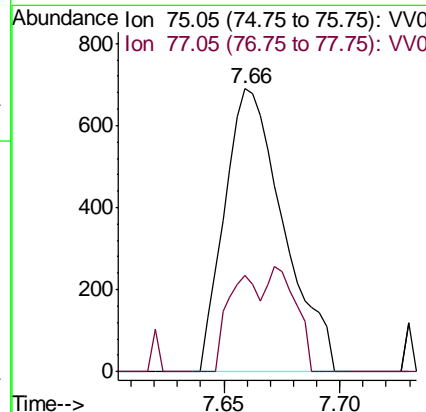
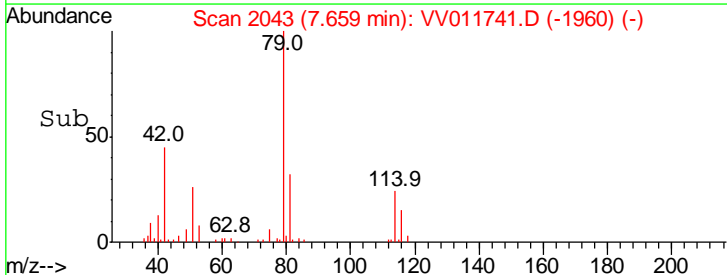
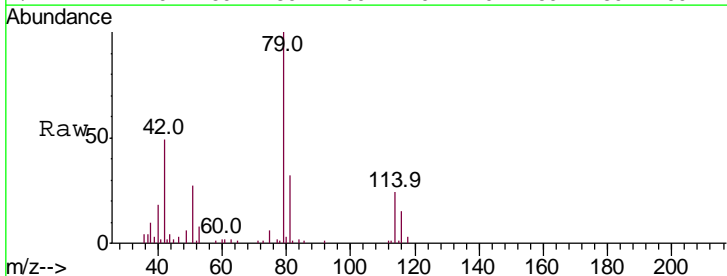
Instrument :
 MSVOA_V
 ClientSampled :

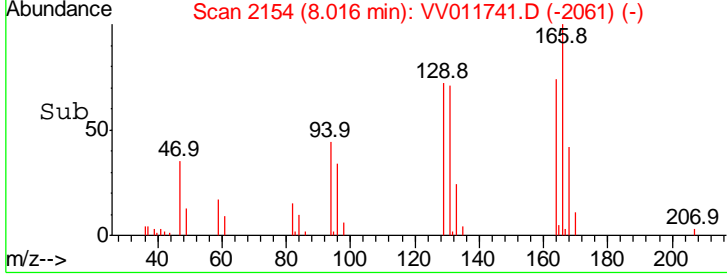
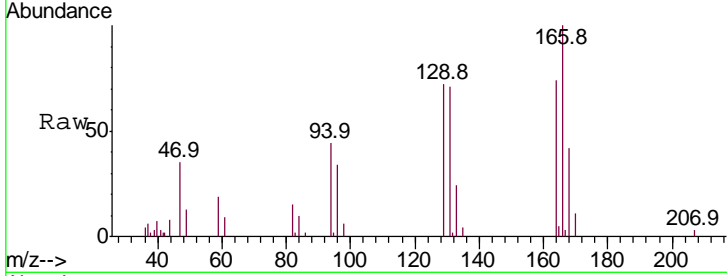
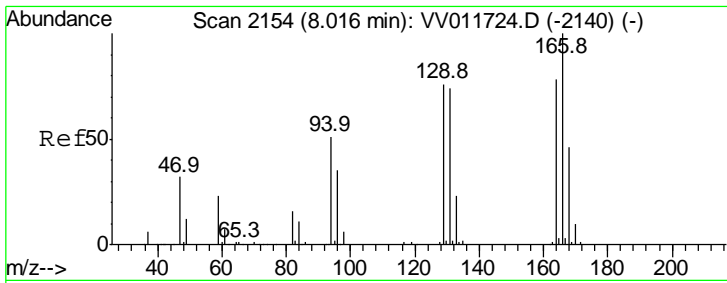
Tgt Ion	Resp	Lower	Upper
91	178565		
91	100		
92	57.3	40.3	74.9



#44
 trans-1,3-Dichloropropene
 Concen: 0.097 ug/L
 RT: 7.66 min Scan# 2043
 Delta R.T. -0.03 min
 Lab File: VV011741.D
 Acq: 24 Jun 2019 20:09

Tgt Ion	Resp	Lower	Upper
75	1217		
75	100		
77	34.1	22.7	42.1

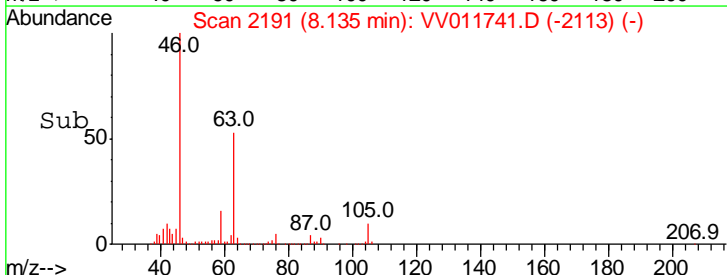
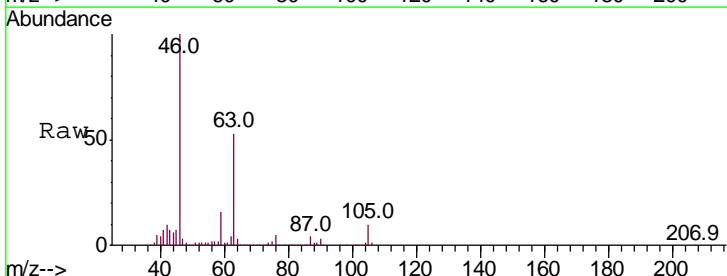
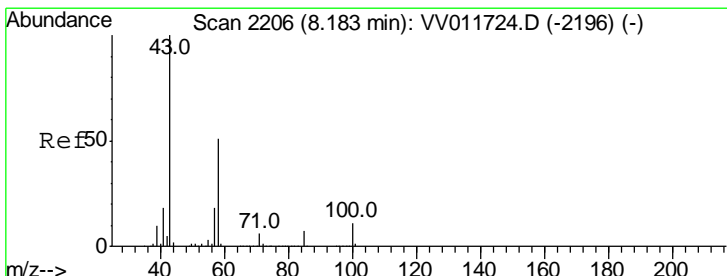
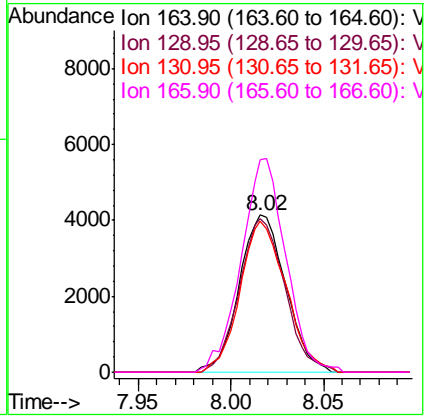




#47
 Tetrachloroethene
 Concen: 0.717 ug/L
 RT: 8.02 min Scan# 2154
 Delta R.T. -0.00 min
 Lab File: VV011741.D
 Acq: 24 Jun 2019 20:09

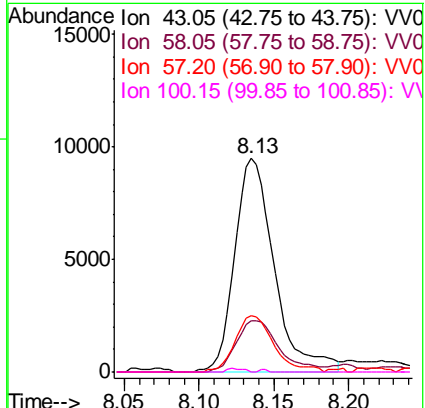
Instrument :
 MSVOA_V
 ClientSampled :

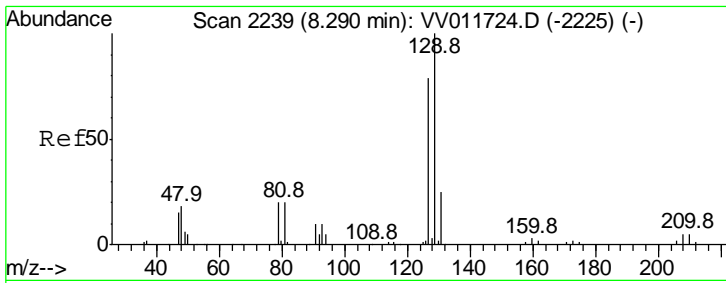
Tgt Ion	Resp	Lower	Upper
164	100		
129	98.2	69.7	129.5
131	95.9	64.6	120.0
166	135.7	86.4	160.4



#48
 2-Hexanone
 Concen: 3.072 ug/L
 RT: 8.13 min Scan# 2191
 Delta R.T. -0.05 min
 Lab File: VV011741.D
 Acq: 24 Jun 2019 20:09

Tgt Ion	Resp	Lower	Upper
43	100		
58	26.1	40.1	60.1#
57	25.6	14.4	21.6#
100	0.2	8.6	12.8#





#49

Dibromochloromethane
 Concen: 0.795 ug/L
 RT: 8.02 min Scan# 2154
 Delta R.T. -0.27 min
 Lab File: VV011741.D
 Acq: 24 Jun 2019 20:09

Instrument :
 MSVOA_V
 ClientSampled :

Tot Ion:129 Resp: 6568
 Ion Ratio Lower Upper
 129 100
 127 0.0 53.5 99.5#

