

Data Path : Z:\VOASRV\HPCHEM1\MSVOA V\DATA\VV062420\
 Data File : VV017110.D
 Acq On : 25 Jun 2020 07:29
 Operator : SY/MD
 Sample : L3102-14
 Misc : 25.0mL/MSVOA V/WATER
 ALS Vial : 45 Sample Multiplier: 1

Instrument :
 MSVOA_V
 ClientSampled :
 F9L63

Quant Time: Jun 25 07:49:09 2020
 Quant Method : Z:\VOASRV\HPCHEM1\MSVOA_V\METHOD\SOMVTR061720WMA.M
 Quant Title : TRACE VOA SOM01.0
 QLast Update : Thu Jun 25 05:27:24 2020
 Response via : Initial Calibration

Internal Standards	R.T.	QIon	Response	Conc	Units	Dev(Min)
1) 1,4-Difluorobenzene	5.64	114	182887	5.00	ug/L	0.00
28) Chlorobenzene-d5	8.87	117	178400	5.00	ug/L	0.00
61) 1,4-Dichlorobenzene-d4	11.27	152	83332	5.00	ug/L	0.00

System Monitoring Compounds

4) Vinyl Chloride-d3	1.32	65	38389	3.50	ug/L	0.00
Spiked Amount	5.000	Range	40 - 130	Recovery	=	70.00%
7) Chloroethane-d5	1.58	69	32660	4.09	ug/L	0.00
Spiked Amount	5.000	Range	65 - 130	Recovery	=	81.80%
11) 1,1-Dichloroethene-d2	2.13	63	61098	2.92	ug/L	0.00
Spiked Amount	5.000	Range	60 - 125	Recovery	=	58.40%#
20) 2-Butanone-d5	3.92	46	123476	44.14	ug/L	-0.02
Spiked Amount	50.000	Range	40 - 130	Recovery	=	88.28%
24) Chloroform-d	4.38	84	104873	4.47	ug/L	0.00
Spiked Amount	5.000	Range	70 - 125	Recovery	=	89.40%
26) 1,2-Dichloroethane-d4	5.06	65	55726	4.48	ug/L	0.00
Spiked Amount	5.000	Range	70 - 130	Recovery	=	89.60%
32) Benzene-d6	5.08	84	191321	4.14	ug/L	0.00
Spiked Amount	5.000	Range	70 - 125	Recovery	=	82.80%
36) 1,2-Dichloropropane-d6	6.10	67	56727	4.09	ug/L	0.00
Spiked Amount	5.000	Range	60 - 140	Recovery	=	81.80%
41) Toluene-d8	7.34	98	171998	3.96	ug/L	0.00
Spiked Amount	5.000	Range	70 - 130	Recovery	=	79.20%
45) trans-1,3-Dichloropropene-	7.64	79	21538	3.73	ug/L	0.00
Spiked Amount	5.000	Range	55 - 130	Recovery	=	74.60%
48) 2-Hexanone-d5	8.11	63	88055	40.05	ug/L	0.00
Spiked Amount	50.000	Range	45 - 130	Recovery	=	80.10%
59) 1,1,2,2-Tetrachloroethane-	10.24	84	42529	4.62	ug/L	0.00
Spiked Amount	5.000	Range	65 - 120	Recovery	=	92.40%
65) 1,2-Dichlorobenzene-d4	11.65	152	70314	4.56	ug/L	0.00
Spiked Amount	5.000	Range	80 - 120	Recovery	=	91.20%

Target Compounds

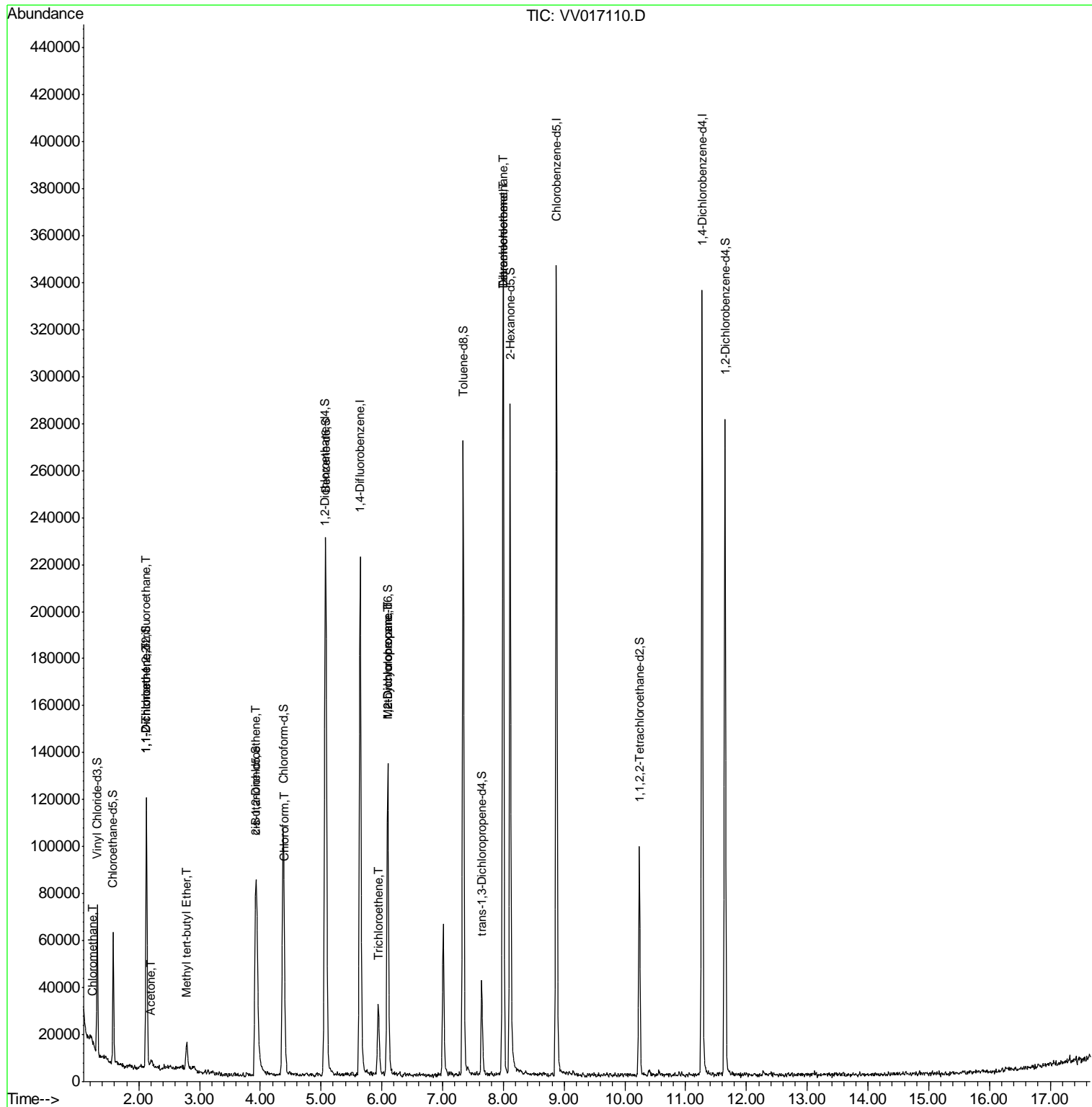
Target Compounds	R.T.	QIon	Response	Conc	Units	Ovalue
3) Chloromethane	1.25	50	1059	0.086	ug/L	97
10) 1,1,2-Trichloro-1,2,2-trif	2.13	101	880	0.091	ug/L #	30
12) 1,1-Dichloroethene	2.12	96	892	0.102	ug/L #	1
13) Acetone	2.20	43	4524	3.199	ug/L	97
17) Methyl tert-butyl Ether	2.79	73	10520	0.477	ug/L #	92
22) cis-1,2-Dichloroethene	3.94	96	16390	1.289	ug/L	97
25) Chloroform	4.40	83	5448	0.239	ug/L	95
34) Trichloroethene	5.94	95	10038	0.734	ug/L	91
35) Methylcyclohexane	6.10	83	14783	0.695	ug/L #	17
37) 1,2-Dichloropropane	6.09	63	7567	0.654	ug/L #	85
49) Tetrachloroethene	8.00	164	81409	7.393	ug/L	97
51) Dibromochloromethane	8.00	129	73672	7.409	ug/L #	11

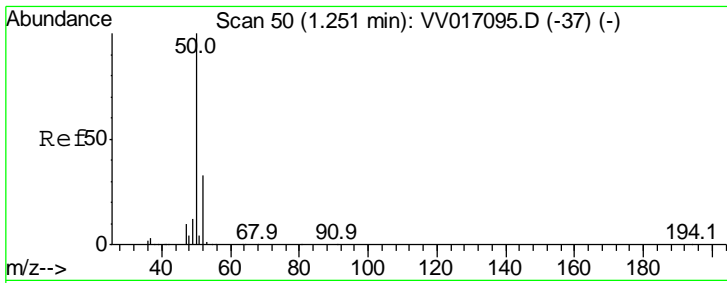
(#) = qualifier out of range (m) = manual integration (+) = signals summed

Data Path : Z:\VOASRV\HPCHEM1\MSVOA V\DATA\VV062420\
 Data File : VV017110.D
 Acq On : 25 Jun 2020 07:29
 Operator : SY/MD
 Sample : L3102-14
 Misc : 25.0mL/MSVOA V/WATER
 ALS Vial : 45 Sample Multiplier: 1

Instrument :
 MSVOA_V
 Client Sampled :
 F9L63

Quant Time: Jun 25 07:49:09 2020
 Quant Method : Z:\VOASRV\HPCHEM1\MSVOA_V\METHOD\SOMVTR061720WMA.M
 Quant Title : TRACE VOA SOM01.0
 QLast Update : Thu Jun 25 05:27:24 2020
 Response via : Initial Calibration

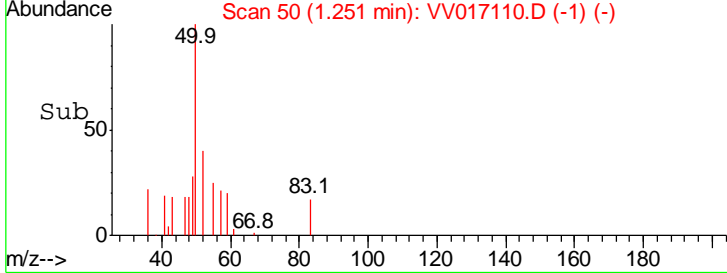
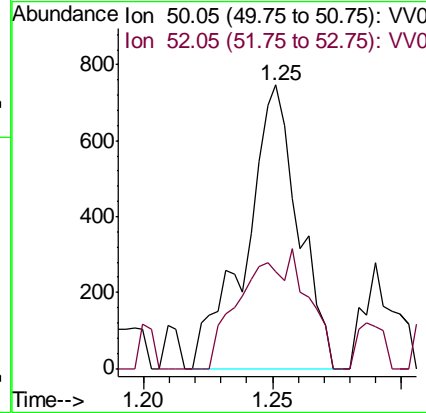
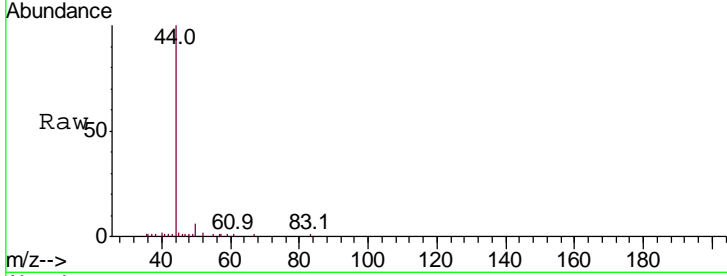




#3
 Chloromethane
 Concen: 0.086 ug/L
 RT: 1.25 min Scan# 50
 Delta R.T. 0.00 min
 Lab File: VV017110.D
 Acq: 25 Jun 2020 07:29

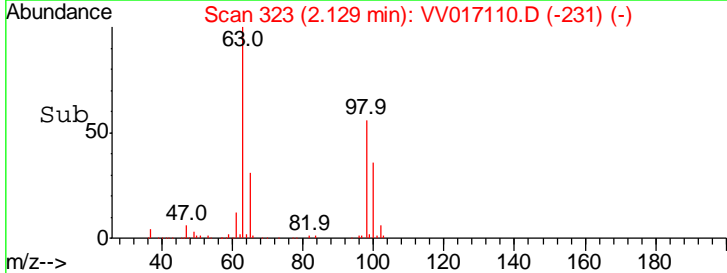
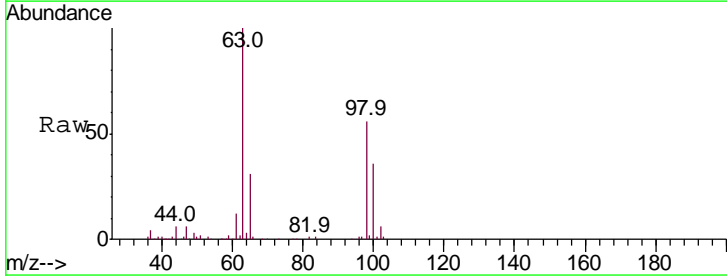
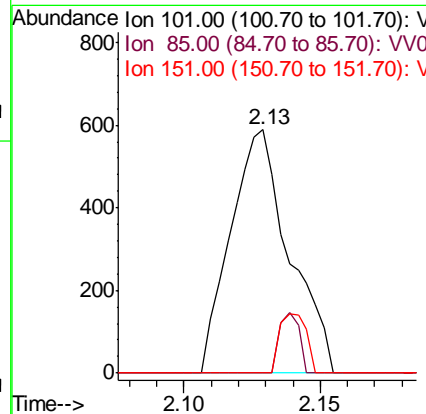
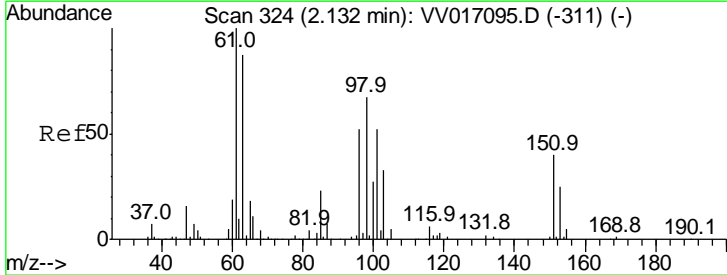
Instrument :
 MSVOA_V
ClientSampled :
 F9L63

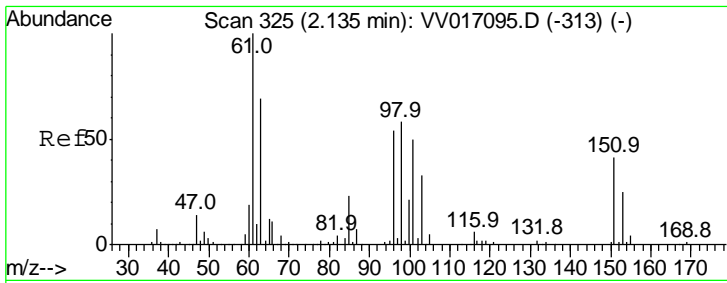
Tgt Ion	Resp	Lower	Upper
50	1059		
52	34.1	22.5	41.9



#10
 1,1,2-Trichloro-1,2,2-trifluoroethane
 Concen: 0.091 ug/L
 RT: 2.13 min Scan# 323
 Delta R.T. -0.00 min
 Lab File: VV017110.D
 Acq: 25 Jun 2020 07:29

Tgt Ion	Resp	Lower	Upper
101	880		
85	8.4	35.4	53.2#
151	11.3	63.9	95.9#

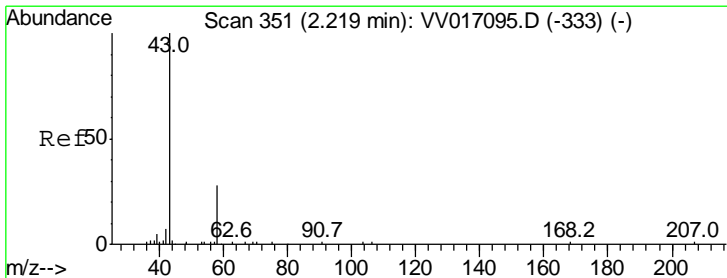
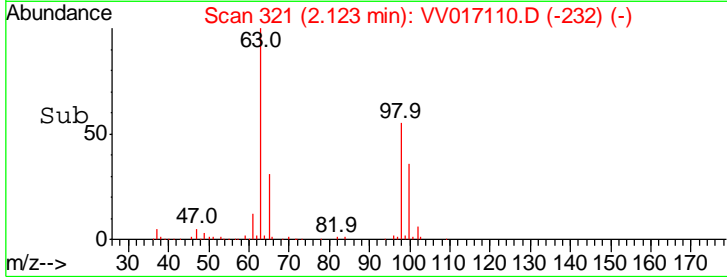
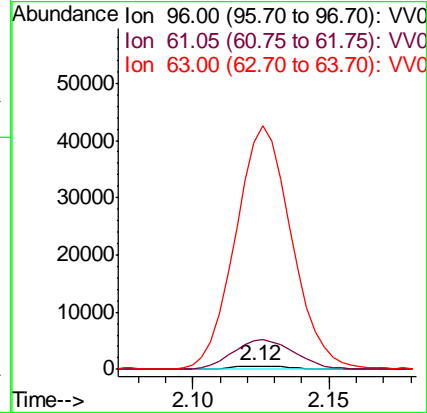
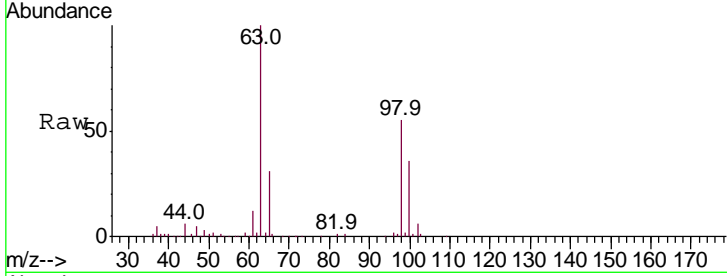




#12
 1,1-Dichloroethene
 Concen: 0.102 ug/L
 RT: 2.12 min Scan# 321
 Delta R.T. -0.01 min
 Lab File: VV017110.D
 Acq: 25 Jun 2020 07:29

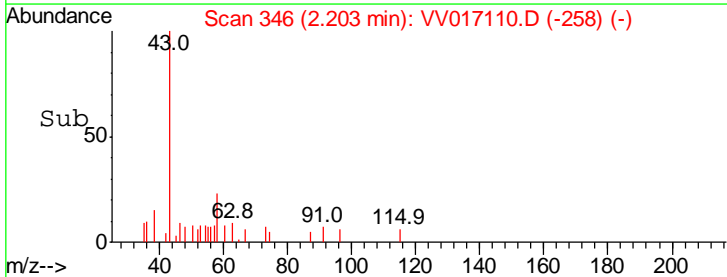
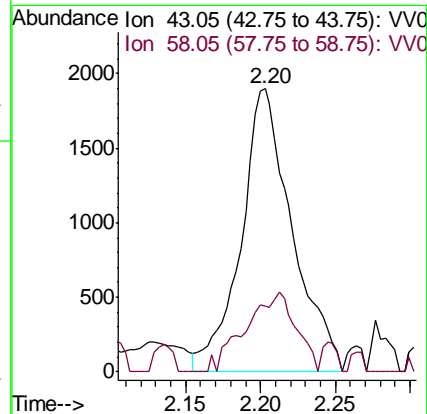
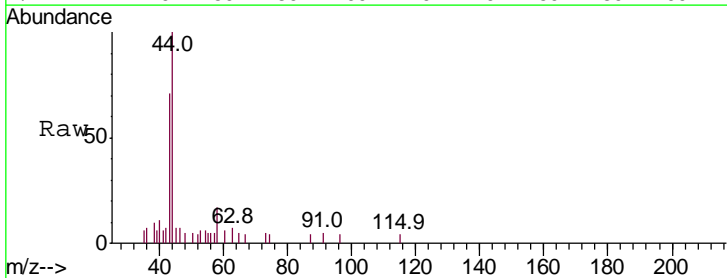
Instrument :
 MSVOA_V
 ClientSampled :
 F9L63

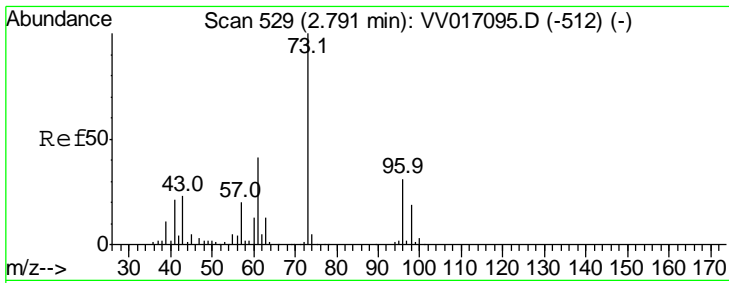
Tgt Ion	Resp	Lower	Upper
96	100		
61	825.0	125.0	232.2#
63	6652.3	109.8	203.8#



#13
 Acetone
 Concen: 3.199 ug/L
 RT: 2.20 min Scan# 346
 Delta R.T. -0.02 min
 Lab File: VV017110.D
 Acq: 25 Jun 2020 07:29

Tgt Ion	Resp	Lower	Upper
43	100		
58	27.8	0.0	58.4

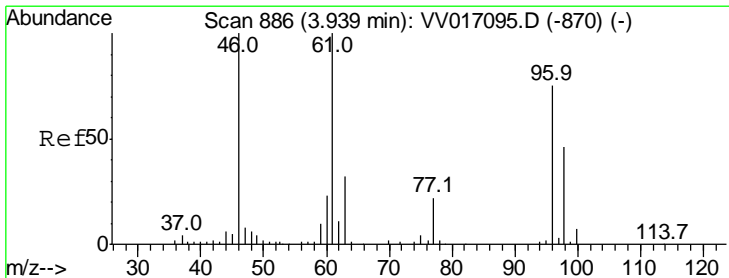
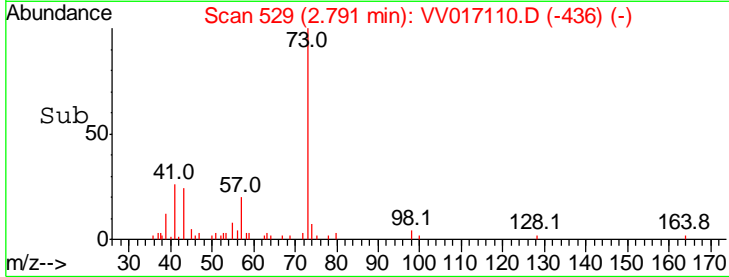
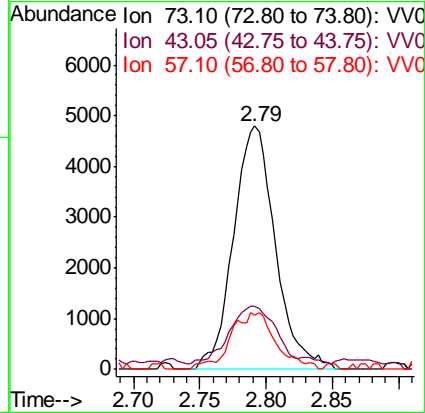
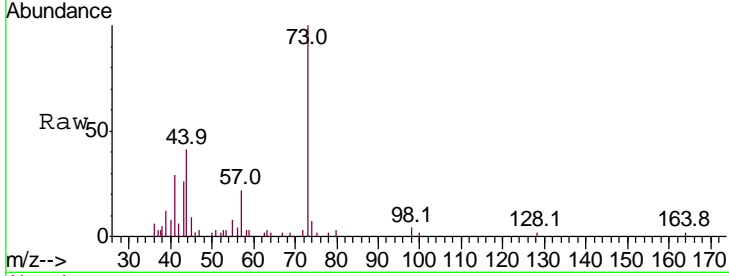




#17
 Methyl tert-butyl Ether
 Concen: 0.477 ug/L
 RT: 2.79 min Scan# 529
 Delta R.T. 0.00 min
 Lab File: VV017110.D
 Acq: 25 Jun 2020 07:29

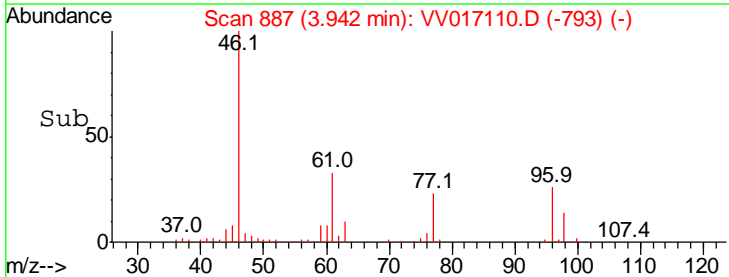
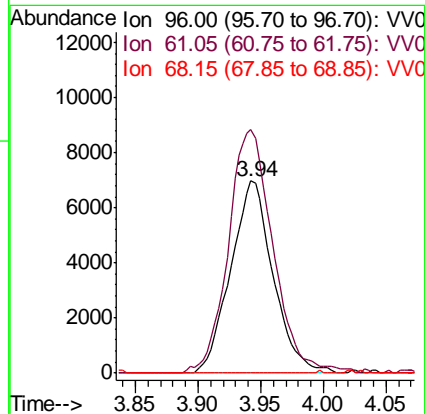
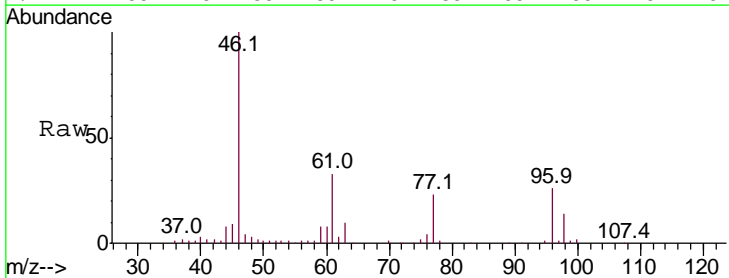
Instrument :
 MSVOA_V
 ClientSampled :
 F9L63

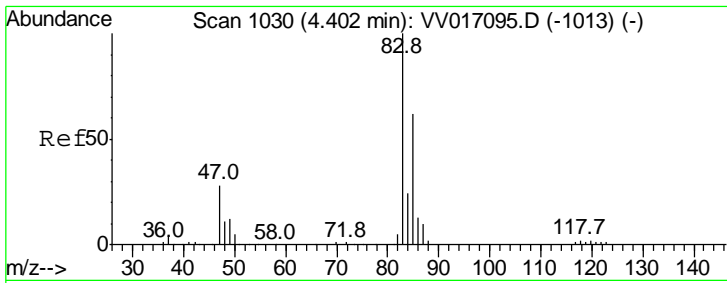
Tgt Ion	Resp	Lower	Upper
73	10520		
43	25.8	18.6	28.0
57	25.3	16.4	24.6



#22
 cis-1,2-Dichloroethene
 Concen: 1.289 ug/L
 RT: 3.94 min Scan# 887
 Delta R.T. 0.00 min
 Lab File: VV017110.D
 Acq: 25 Jun 2020 07:29

Tgt Ion	Resp	Lower	Upper
96	16390		
61	126.9	91.0	169.0
68	0.0	0.0	0.0

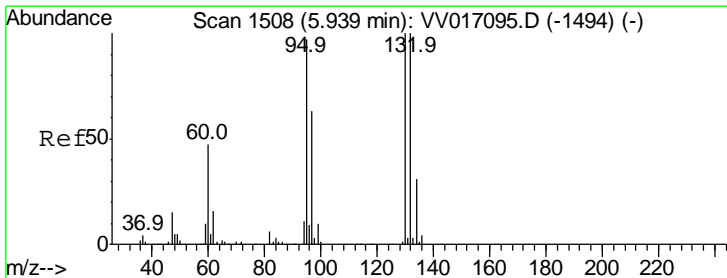
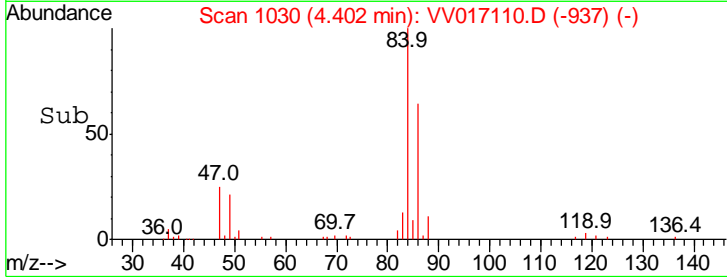
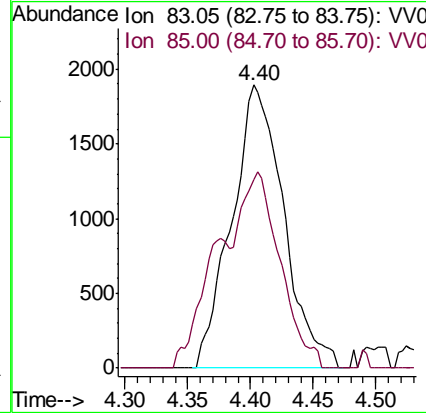
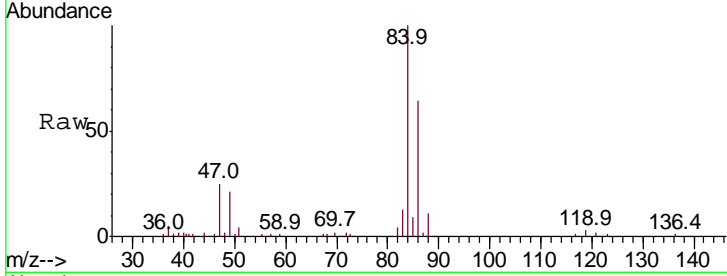




#25
 Chloroform
 Concen: 0.239 ug/L
 RT: 4.40 min Scan# 1030
 Delta R.T. 0.00 min
 Lab File: VV017110.D
 Acq: 25 Jun 2020 07:29

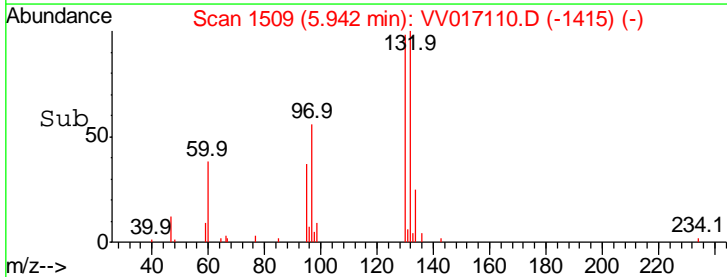
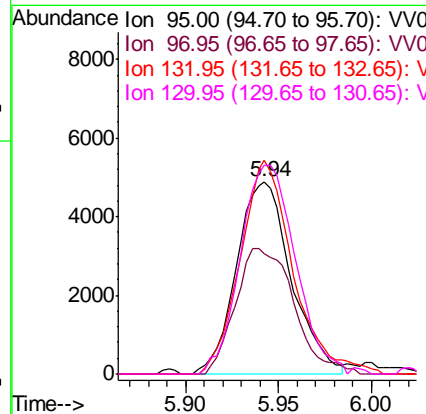
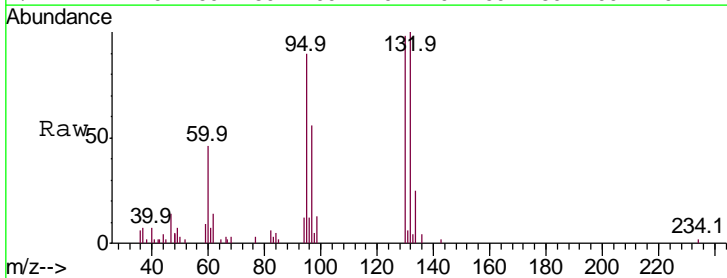
Instrument : MSVOA_V
 ClientSampled : F9L63

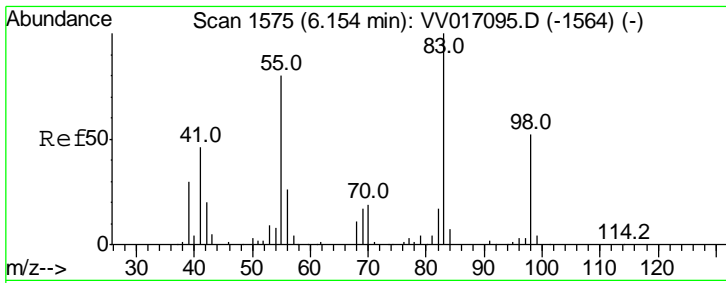
Tgt Ion	Ratio	Lower	Upper
83	100		
85	66.7	44.2	82.2



#34
 Trichloroethene
 Concen: 0.734 ug/L
 RT: 5.94 min Scan# 1509
 Delta R.T. 0.00 min
 Lab File: VV017110.D
 Acq: 25 Jun 2020 07:29

Tgt Ion	Ratio	Lower	Upper
95	100		
97	62.3	45.3	84.1
132	110.9	68.8	127.8
130	108.5	70.2	130.4

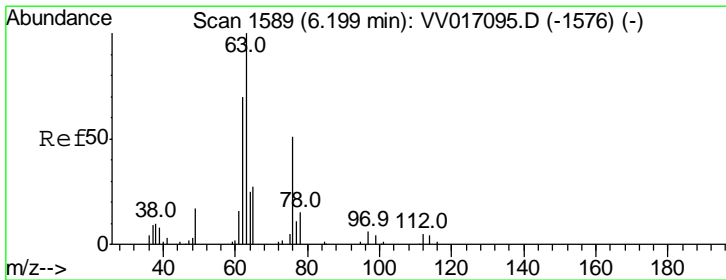
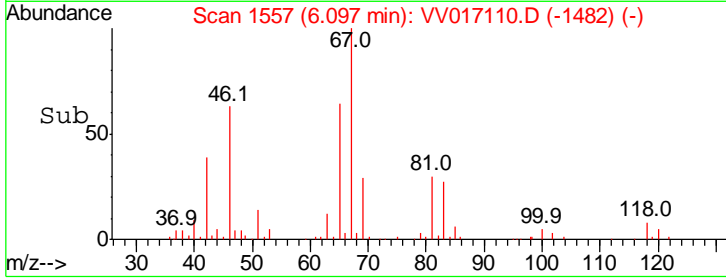
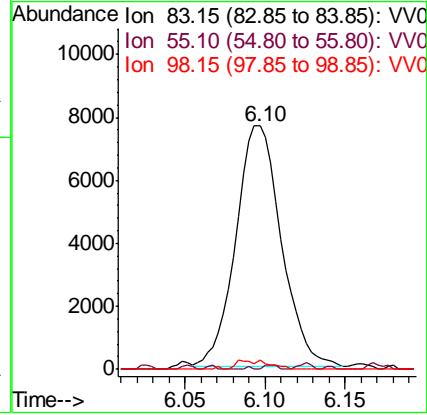
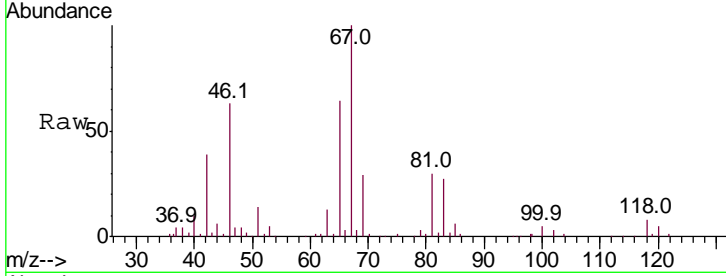




#35
 Methylcyclohexane
 Concen: 0.695 ug/L
 RT: 6.10 min Scan# 1557
 Delta R.T. -0.06 min
 Lab File: VV017110.D
 Acq: 25 Jun 2020 07:29

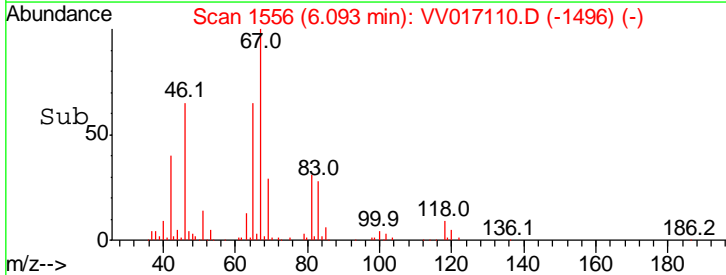
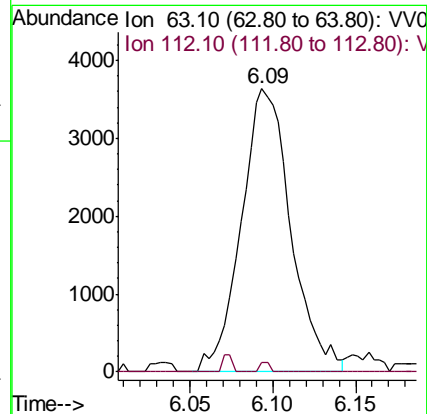
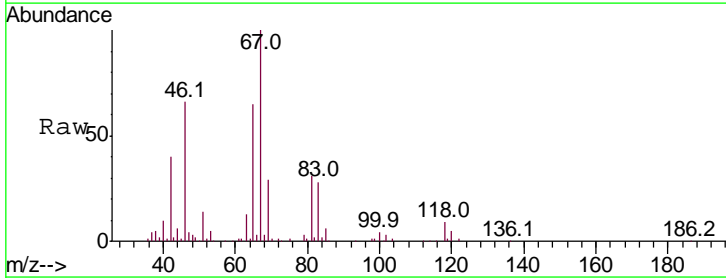
Instrument :
 MSVOA_V
ClientSampled :
 F9L63

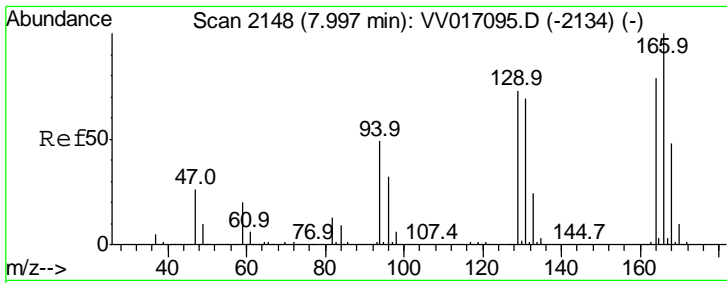
Tgt Ion	Resp	Lower	Upper
83	100		
55	0.5	63.6	95.4#
98	0.0	38.8	58.2#



#37
 1,2-Dichloropropane
 Concen: 0.654 ug/L
 RT: 6.09 min Scan# 1556
 Delta R.T. -0.11 min
 Lab File: VV017110.D
 Acq: 25 Jun 2020 07:29

Tgt Ion	Resp	Lower	Upper
63	100		
112	0.6	4.4	6.6#

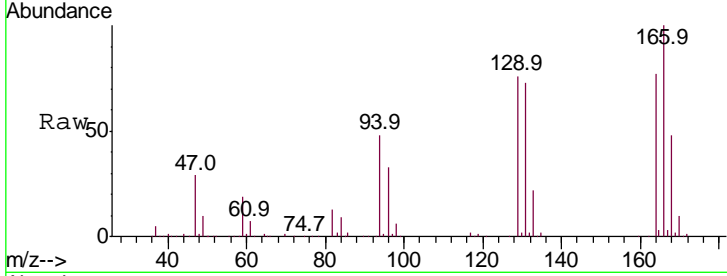




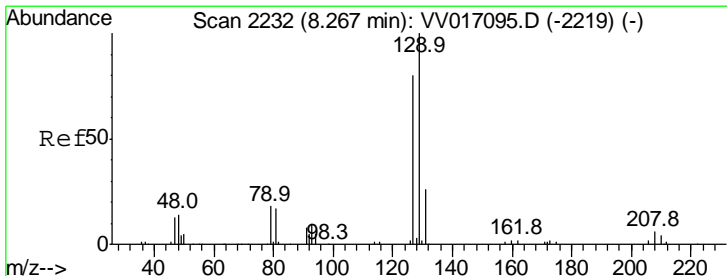
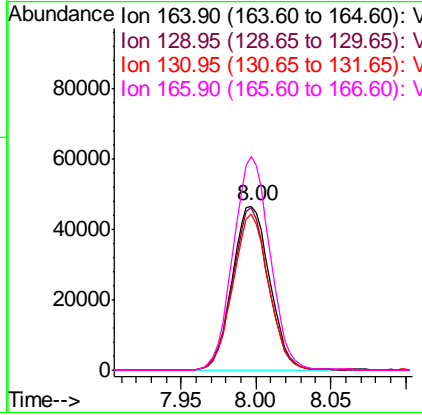
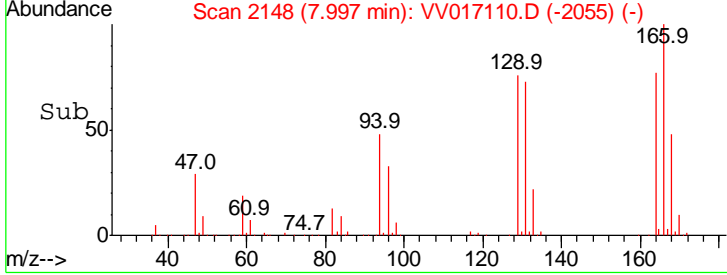
#49

Tetrachloroethene
 Concen: 7.393 ug/L
 RT: 8.00 min Scan# 2148
 Delta R.T. 0.00 min
 Lab File: VV017110.D
 Acq: 25 Jun 2020 07:29

Instrument : MSVOA_V
 ClientSampled : F9L63

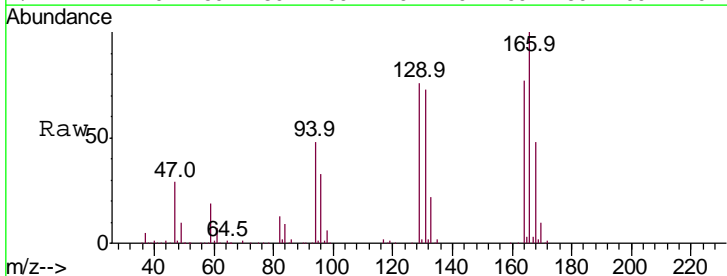


Tgt Ion	Resp	Lower	Upper
164	100		
129	99.2	65.2	121.0
131	94.9	64.1	119.1
166	130.2	90.2	167.4



#51

Dibromochloromethane
 Concen: 7.409 ug/L
 RT: 8.00 min Scan# 2148
 Delta R.T. -0.27 min
 Lab File: VV017110.D
 Acq: 25 Jun 2020 07:29



Tgt Ion	Resp	Lower	Upper
129	100		
127	0.0	54.1	100.5#

