

Data Path : Z:\VOASRV\HPCHEM1\MSVOA V\DATA\VV062420\
 Data File : VV017115.D
 Acq On : 25 Jun 2020 09:29
 Operator : SY/MD
 Sample : L3102-19
 Misc : 25.0mL/MSVOA V/WATER
 ALS Vial : 50 Sample Multiplier: 1

Instrument :
 MSVOA_V
 ClientSampled :
 F9L68

Integration Parameters: rteint.p
 Integrator: RTE
 Smoothing : ON Filtering: 5
 Sampling : 1 Min Area: 3 % of largest Peak
 Start Thrs: 0.1 Max Peaks: 100
 Stop Thrs : 0 Peak Location: TOP

If leading or trailing edge < 100 prefer < Baseline drop else tangent >
 Peak separation: 5

Method : Z:\VOASRV\HPCHEM1\MSVOA_V\METHOD\SOMVTR061720WMA.M
 Title : TRACE VOA SOM01.0

Signal : TIC

peak #	R.T. min	first scan	max scan	last scan	PK TY	peak height	corr. area	corr. % max.	% of total
1	1.315	64	70	84	rVB	61944	69642	12.74%	1.509%
2	1.579	143	152	164	rBV	49497	59083	10.81%	1.280%
3	2.126	312	322	335	rBV	106993	158300	28.96%	3.430%
4	3.923	869	881	910	rBV2	62681	197321	36.10%	4.276%
5	4.380	1005	1023	1044	rBV2	98037	244917	44.81%	5.308%
6	5.074	1218	1239	1269	rBV3	217637	546616	100.00%	11.846%
7	5.643	1402	1416	1431	rBV	209096	416929	76.27%	9.035%
8	6.097	1543	1557	1572	rBV	125515	258126	47.22%	5.594%
9	7.010	1829	1841	1858	rBV	60222	110580	20.23%	2.396%
10	7.338	1932	1943	1959	rBV	258434	448751	82.10%	9.725%
11	7.646	2029	2039	2049	rBV3	37914	65547	11.99%	1.420%
12	8.109	2173	2183	2201	rBV	262312	455068	83.25%	9.862%
13	8.875	2407	2421	2438	rBV	320711	527009	96.41%	11.421%
14	10.238	2833	2845	2862	rBV2	91343	151044	27.63%	3.273%
15	10.402	2888	2896	2906	rVB10	3945	5729	1.05%	0.124%
16	11.270	3154	3166	3178	rBV	306940	474129	86.74%	10.275%
17	11.646	3271	3283	3304	rBV	268417	425707	77.88%	9.225%

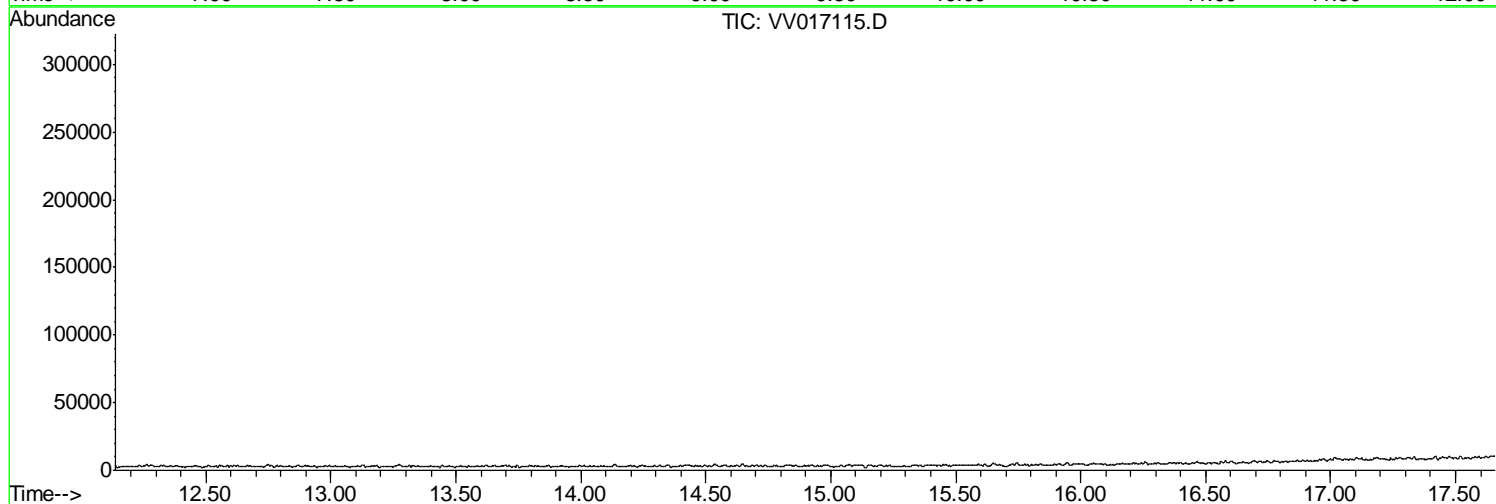
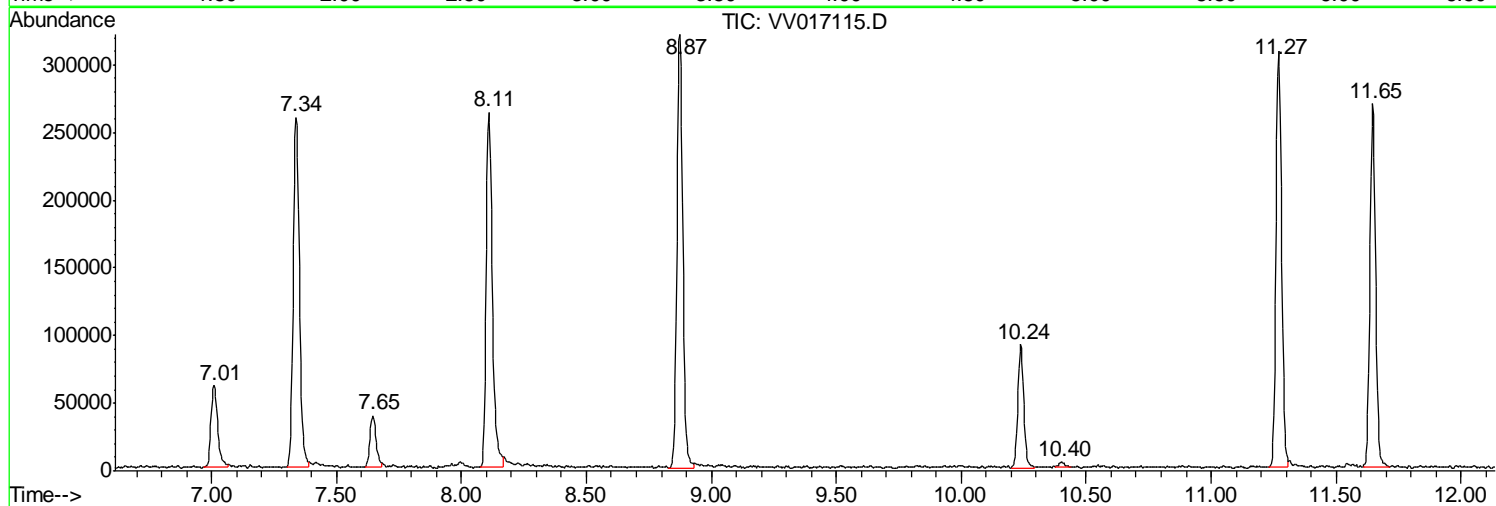
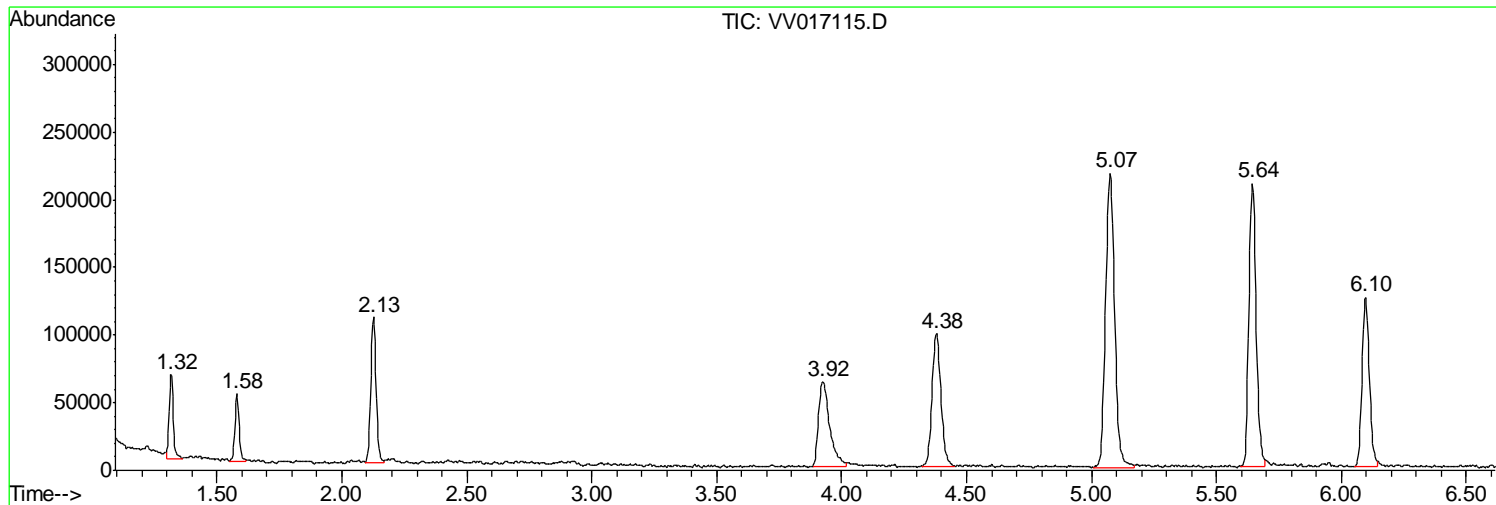
Sum of corrected areas: 4614498

Data Path : Z:\VOASRV\HPCHEM1\MSVOA V\DATA\VV062420\
Data File : VV017115.D
Acq On : 25 Jun 2020 09:29
Operator : SY/MD
Sample : L3102-19
Misc : 25.0mL/MSVOA V/WATER
ALS Vial : 50 Sample Multiplier: 1

Instrument :
MSVOA_V
ClientSampled :
F9L68

Quant Method : Z:\VOASRV\HPCHEM1\MSVOA_V\METHOD\SOMVTR061720WMA.M
Quant Title : TRACE VOA SOM01.0

TIC Library : C:\DATABASE\NIST11.L
TIC Integration Parameters: LSCINT.P



Data Path : Z:\VOASRV\HPCHEM1\MSVOA_V\DATA\VV062420\
Data File : VV017115.D
Acq On : 25 Jun 2020 09:29
Operator : SY/MD
Sample : L3102-19
Misc : 25.0mL/MSVOA_V/WATER
ALS Vial : 50 Sample Multiplier: 1

Instrument :
MSVOA_V
ClientSampleId :
F9L68

Quant Method : Z:\VOASRV\HPCHEM1\MSVOA_V\METHOD\SOMVTR061720WMA.M
Quant Title : TRACE VOA SOM01.0

TIC Library : C:\DATABASE\NIST11.L
TIC Integration Parameters: LSCINT.P

No Library Search Compounds Detected

Data Path : Z:\VOASRV\HPCHEM1\MSVOA_V\DATA\VV062420\
Data File : VV017115.D
Acq On : 25 Jun 2020 09:29
Operator : SY/MD
Sample : L3102-19
Misc : 25.0mL/MSVOA_V/WATER
ALS Vial : 50 Sample Multiplier: 1

Instrument :
MSVOA_V
ClientSampleId :
F9L68

Quant Method : Z:\VOASRV\HPCHEM1\MSVOA_V\METHOD\SOMVTR061720WMA.M
Quant Title : TRACE VOA SOM01.0

TIC Library : C:\DATABASE\NIST11.L
TIC Integration Parameters: LSCINT.P

TIC Top Hit name	RT	EstConc	Units	Response	--Internal Standard--			
					#	RT	Resp	Conc
