

Data Path : Z:\voasrv\HPCHEM1\MSVOA_V\Data\VV062424\
 Data File : VV036236.D
 Acq On : 24 Jun 2024 11:11
 Operator : SY/MD
 Sample : VV0624SBL01
 Misc : 5.00g/10.0mL/MSVOA_V/SOIL
 ALS Vial : 4 Sample Multiplier: 1

Instrument :
 MSVOA_V
 ClientSampleId :
 VBLK331

Integration Parameters: LSCINT.P

Integrator: RTE
 Smoothing : OFF
 Sampling : 1
 Start Thrs: 0.2
 Stop Thrs : 0

Filtering: 5
 Min Area: 0 % of largest Peak
 Max Peaks: 100
 Peak Location: TOP

If leading or trailing edge < 100 prefer < Baseline drop else tangent >
 Peak separation: 5

Method : Z:\voasrv\HPCHEM1\MSVOA_V\Method\SFAMVLM053024SMA.M
 Title : VOC Analysis

Signal : TIC: VV036236.D\data.ms

peak #	R.T. min	first scan	max scan	last scan	PK TY	peak height	corr. area	corr. % max.	% of total
1	1.272	67	72	91	rVB	124716	137649	15.30%	1.978%
2	1.526	145	151	166	rVB	113096	135770	15.09%	1.951%
3	2.053	306	315	327	rVB	235964	337207	37.48%	4.846%
4	2.442	426	436	452	rBV	30468	53863	5.99%	0.774%
5	2.847	557	562	564	rBV3	442	402	0.04%	0.006%
6	2.867	564	568	577	rVV7	775	1201	0.13%	0.017%
7	2.960	586	597	622	rVB2	22000	46879	5.21%	0.674%
8	3.047	622	624	629	rBV3	456	355	0.04%	0.005%
9	3.069	629	631	638	rVB4	534	464	0.05%	0.007%
10	3.108	638	643	644	rBV2	581	439	0.05%	0.006%
11	3.153	654	657	660	rVB2	522	230	0.03%	0.003%
12	3.301	700	703	707	rBV2	282	254	0.03%	0.004%
13	3.346	713	717	719	rBV3	154	105	0.01%	0.002%
14	3.416	737	739	742	rVB2	403	158	0.02%	0.002%
15	3.564	780	785	787	rBV	233	234	0.03%	0.003%
16	3.667	814	817	821	rBV	380	294	0.03%	0.004%
17	3.693	824	825	830	rBV2	208	131	0.01%	0.002%
18	3.741	836	840	846	rBV3	461	335	0.04%	0.005%
19	3.847	854	873	894	rBV3	29393	128180	14.25%	1.842%
20	4.243	983	996	1033	rVB	147885	396390	44.05%	5.697%
21	4.568	1095	1097	1099	rBV2	630	451	0.05%	0.006%
22	4.725	1138	1146	1148	rBV2	999	908	0.10%	0.013%
23	4.857	1182	1187	1190	rBV3	271	264	0.03%	0.004%
24	4.886	1194	1196	1199	rVB	363	155	0.02%	0.002%
25	4.953	1199	1217	1254	rBV2	342958	899780	100.00%	12.932%
26	5.313	1326	1329	1330	rBV	492	252	0.03%	0.004%
27	5.371	1344	1347	1349	rBV	447	259	0.03%	0.004%
28	5.410	1358	1359	1362	rVB	378	135	0.02%	0.002%
29	5.468	1374	1377	1379	rBV3	300	191	0.02%	0.003%
30	5.532	1385	1397	1434	rBV	305078	664043	73.80%	9.544%
31	5.828	1479	1489	1512	rBV3	13298	32314	3.59%	0.464%
32	5.985	1526	1538	1568	rBV	201899	436411	48.50%	6.272%
33	6.432	1674	1677	1678	rBV	281	150	0.02%	0.002%
34	6.490	1691	1695	1697	rVB	170	121	0.01%	0.002%
35	6.506	1697	1700	1703	rVB2	286	176	0.02%	0.003%
36	6.532	1703	1708	1713	rBV3	300	372	0.04%	0.005%

Data Path : Z:\voasrv\HPCHEM1\MSVOA_V\Data\VV062424\
 Data File : VV036236.D
 Acq On : 24 Jun 2024 11:11
 Operator : SY/MD
 Sample : VV0624SBL01
 Misc : 5.00g/10.0mL/MSVOA_V/SOIL
 ALS Vial : 4 Sample Multiplier: 1

Instrument :
 MSVOA_V
 ClientSampleId :
 VBLK331

Integration Parameters: LSCINT.P

Integrator: RTE
 Smoothing : OFF
 Sampling : 1
 Start Thrs : 0.2
 Stop Thrs : 0

Filtering: 5
 Min Area: 0 % of largest Peak
 Max Peaks: 100
 Peak Location: TOP

If leading or trailing edge < 100 prefer < Baseline drop else tangent >
 Peak separation: 5

Method : Z:\voasrv\HPCHEM1\MSVOA_V\Method\SFAMVLM053024SMA.M
 Title : VOC Analysis

37	6.567	1714	1719	1722	rVB2	195	155	0.02%	0.002%
38	6.587	1723	1725	1728	rVV2	258	133	0.01%	0.002%
39	6.670	1749	1751	1755	rVB	496	229	0.03%	0.003%
40	6.690	1755	1757	1760	rBV2	344	228	0.03%	0.003%
41	6.709	1760	1763	1767	rVB3	244	159	0.02%	0.002%
42	6.796	1788	1790	1794	rVB3	340	207	0.02%	0.003%
43	6.831	1798	1801	1803	rBV	202	105	0.01%	0.002%
44	6.857	1807	1809	1810	rBV	249	119	0.01%	0.002%
45	6.915	1817	1827	1849	rBV2	86081	175722	19.53%	2.526%
46	7.243	1918	1929	1952	rBV	342857	630645	70.09%	9.064%
47	7.555	2017	2026	2048	rBV2	55702	113383	12.60%	1.630%
48	7.876	2115	2126	2133	rBV2	11599	20211	2.25%	0.290%
49	7.953	2147	2150	2151	rBV	267	135	0.02%	0.002%
50	8.034	2167	2175	2203	rBV	57830	141744	15.75%	2.037%
51	8.362	2270	2277	2288	rVB3	10602	17108	1.90%	0.246%
52	8.510	2321	2323	2325	rVB2	711	296	0.03%	0.004%
53	8.522	2325	2327	2328	rBV2	259	124	0.01%	0.002%
54	8.580	2341	2345	2348	rBV3	406	386	0.04%	0.006%
55	8.667	2370	2372	2373	rBV	308	111	0.01%	0.002%
56	8.728	2388	2391	2393	rBV2	545	321	0.04%	0.005%
57	8.783	2397	2408	2444	rBV	492297	846494	94.08%	12.166%
58	9.159	2523	2525	2529	rBV3	725	550	0.06%	0.008%
59	9.188	2531	2534	2538	rVB2	584	332	0.04%	0.005%
60	9.217	2539	2543	2548	rVB3	599	591	0.07%	0.008%
61	9.246	2549	2552	2553	rBV	267	141	0.02%	0.002%
62	9.291	2561	2566	2569	rBV3	499	484	0.05%	0.007%
63	9.365	2587	2589	2592	rBV3	376	264	0.03%	0.004%
64	9.429	2605	2609	2616	rVB4	306	280	0.03%	0.004%
65	9.471	2616	2622	2623	rBV	788	460	0.05%	0.007%
66	9.866	2741	2745	2746	rBV2	1076	651	0.07%	0.009%
67	9.960	2771	2774	2777	rVB	517	327	0.04%	0.005%
68	9.982	2777	2781	2782	rBV	303	182	0.02%	0.003%
69	10.021	2790	2793	2795	rVB	302	170	0.02%	0.002%
70	10.043	2797	2800	2801	rBV	656	344	0.04%	0.005%
71	10.149	2822	2833	2854	rVV	180554	295681	32.86%	4.250%
72	10.323	2877	2887	2899	rVB	19055	30177	3.35%	0.434%
73	10.435	2920	2922	2926	rVB	319	211	0.02%	0.003%
74	10.516	2945	2947	2950	rBV3	488	351	0.04%	0.005%
75	10.574	2962	2965	2969	rBV2	293	226	0.03%	0.003%
76	10.661	2987	2992	2994	rBV2	459	337	0.04%	0.005%

Data Path : Z:\voasrv\HPCHEM1\MSVOA_V\Data\VV062424\
 Data File : VV036236.D
 Acq On : 24 Jun 2024 11:11
 Operator : SY/MD
 Sample : VV0624SBL01
 Misc : 5.00g/10.0mL/MSVOA_V/SOIL
 ALS Vial : 4 Sample Multiplier: 1

Instrument :
 MSVOA_V
 ClientSampleId :
 VBLK331

Integration Parameters: LSCINT.P

Integrator: RTE
 Smoothing : OFF Filtering: 5
 Sampling : 1 Min Area: 0 % of largest Peak
 Start Thrs: 0.2 Max Peaks: 100
 Stop Thrs : 0 Peak Location: TOP

If leading or trailing edge < 100 prefer < Baseline drop else tangent >
 Peak separation: 5

Method : Z:\voasrv\HPCHEM1\MSVOA_V\Method\SFAMVLM053024SMA.M
 Title : VOC Analysis

77	10.706	3003	3006	3009	rBV	279	142	0.02%	0.002%
78	10.744	3009	3018	3021	rBV4	1277	1714	0.19%	0.025%
79	10.860	3048	3054	3064	rVV5	1533	2456	0.27%	0.035%
80	10.976	3084	3090	3092	rBV2	345	376	0.04%	0.005%
81	11.001	3096	3098	3100	rBV	248	152	0.02%	0.002%
82	11.021	3102	3104	3111	rVB2	599	616	0.07%	0.009%
83	11.127	3130	3137	3144	rBV5	3199	4830	0.54%	0.069%
84	11.181	3144	3154	3188	rVV	449474	741985	82.46%	10.664%
85	11.558	3257	3271	3298	rBV	356017	585130	65.03%	8.410%
86	11.850	3360	3362	3364	rBV2	399	143	0.02%	0.002%
87	11.863	3364	3366	3368	rVV2	506	197	0.02%	0.003%
88	12.143	3451	3453	3457	rBV2	286	202	0.02%	0.003%
89	12.194	3462	3469	3481	rVB2	7696	11524	1.28%	0.166%
90	12.255	3481	3488	3490	rBV3	508	542	0.06%	0.008%
91	12.368	3521	3523	3527	rBV2	519	391	0.04%	0.006%
92	12.471	3553	3555	3558	rVB2	503	229	0.03%	0.003%
93	12.583	3582	3590	3599	rBV9	3923	6794	0.76%	0.098%
94	12.683	3615	3621	3623	rBV3	556	596	0.07%	0.009%
95	12.747	3639	3641	3644	rBV3	500	377	0.04%	0.005%
96	13.030	3726	3729	3732	rBV3	602	428	0.05%	0.006%
97	13.207	3776	3784	3797	rBV5	4823	7704	0.86%	0.111%
98	13.371	3833	3835	3837	rBV	649	311	0.03%	0.004%
99	13.448	3853	3859	3870	rVB2	5520	9016	1.00%	0.130%
100	13.683	3924	3932	3942	rVB2	17390	25636	2.85%	0.368%

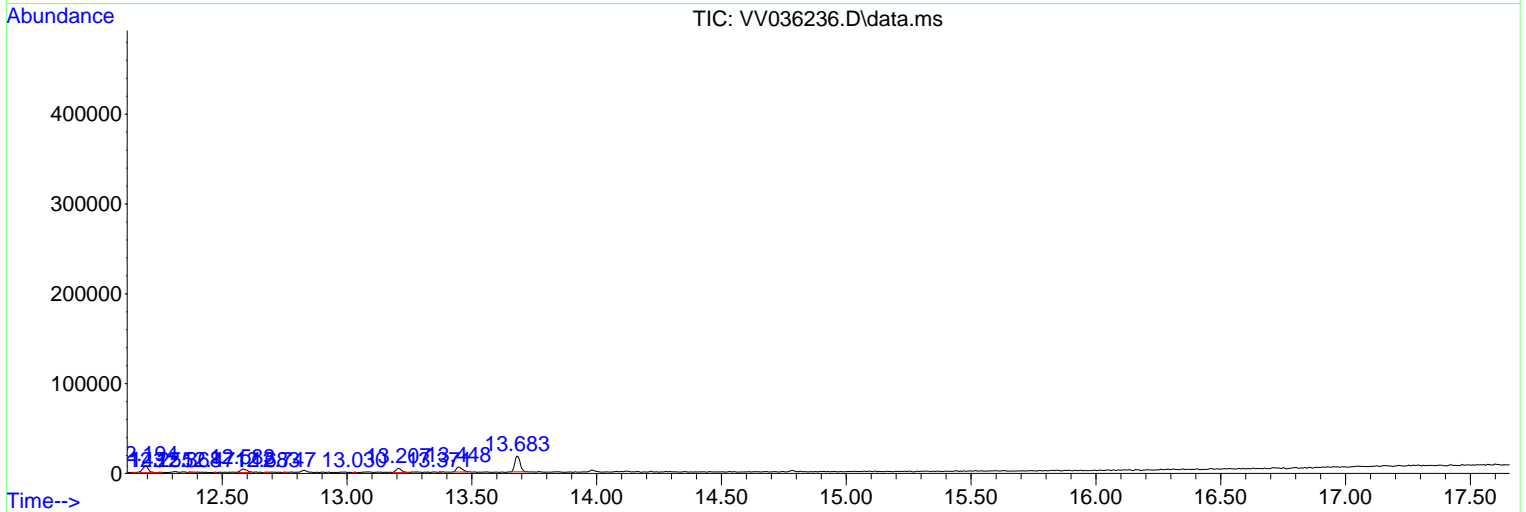
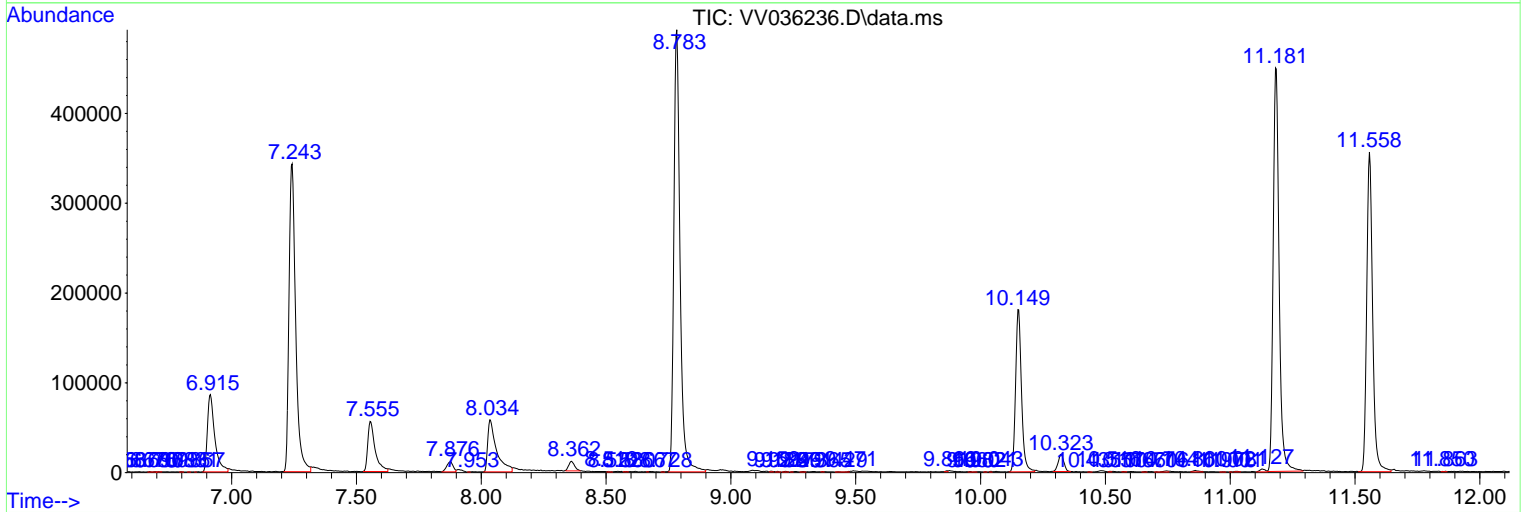
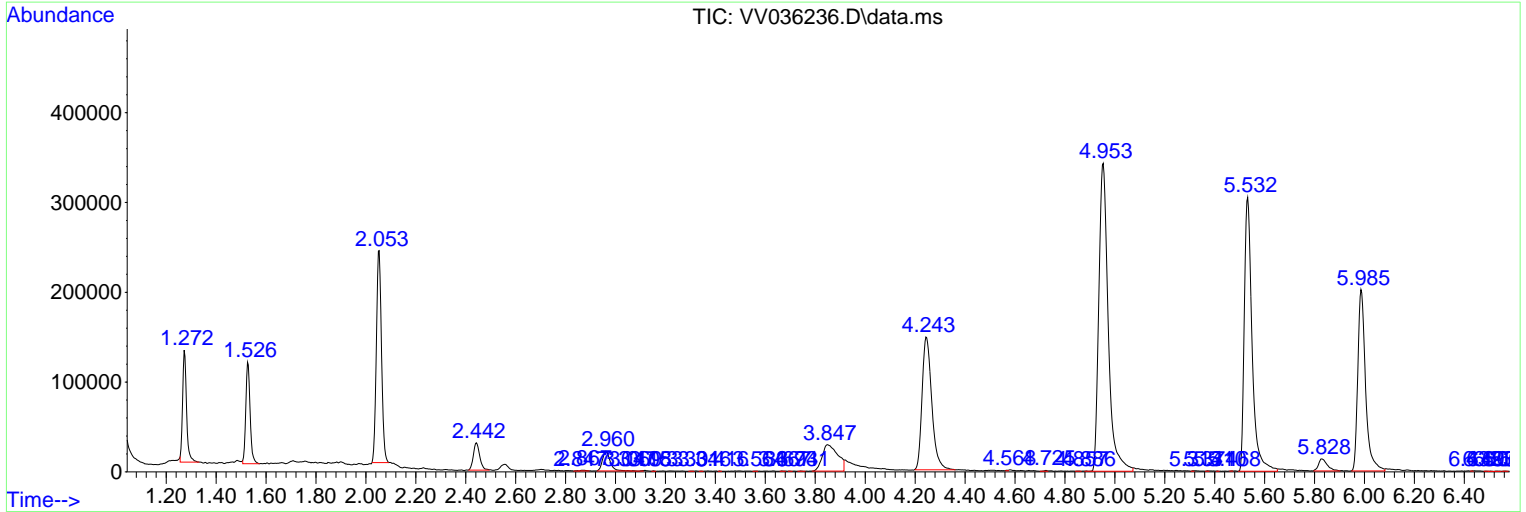
Sum of corrected areas: 6957787

Data Path : Z:\voasrv\HPCHEM1\MSVOA_V\Data\VV062424\
 Data File : VV036236.D
 Acq On : 24 Jun 2024 11:11
 Operator : SY/MD
 Sample : VV0624SBL01
 Misc : 5.00g/10.0mL/MSVOA_V/SOIL
 ALS Vial : 4 Sample Multiplier: 1

Instrument :
 MSVOA_V
ClientSampleId :
 VBLK331

Quant Method : Z:\voasrv\HPCHEM1\MSVOA_V\Method\SFAMVLM053024SMA.M
 Quant Title : VOC Analysis

TIC Library : C:\Database\NIST20.L
 TIC Integration Parameters: LSCINT.P



Data Path : Z:\voasrv\HPCHEM1\MSVOA_V\Data\VV062424\
 Data File : VV036236.D
 Acq On : 24 Jun 2024 11:11
 Operator : SY/MD
 Sample : VV0624SBL01
 Misc : 5.00g/10.0mL/MSVOA_V/SOIL
 ALS Vial : 4 Sample Multiplier: 1

Instrument :
 MSVOA_V
 ClientSampleId :
 VBLK331

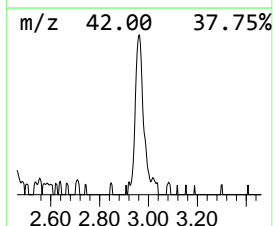
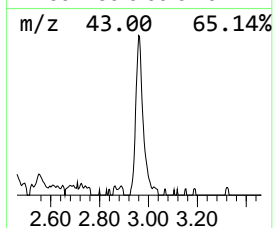
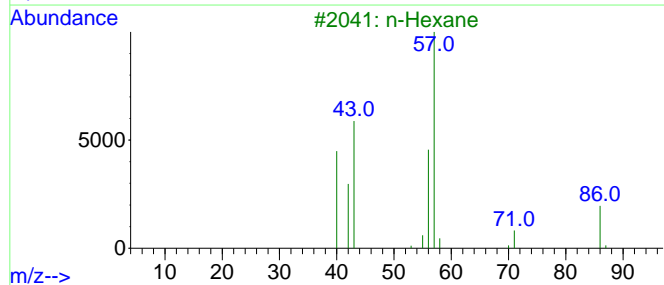
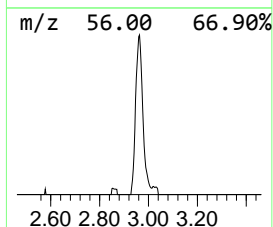
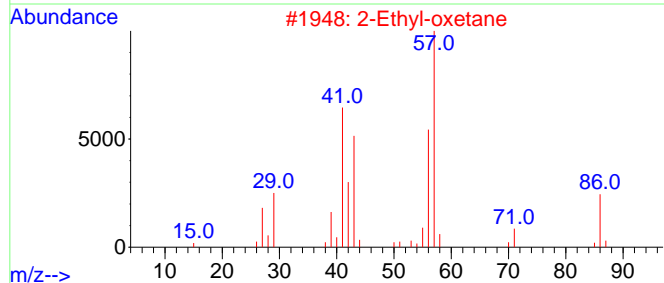
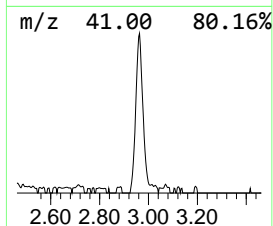
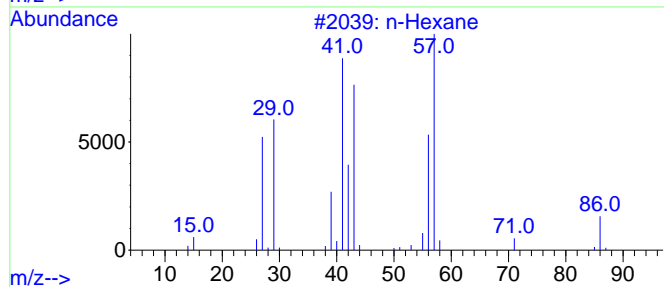
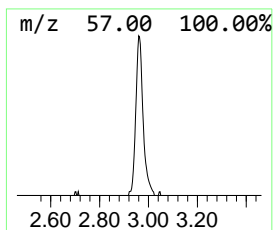
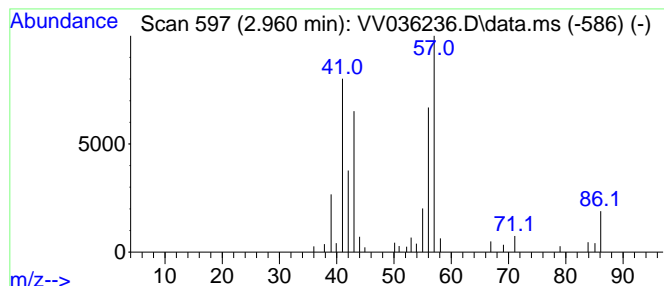
Quant Method : Z:\voasrv\HPCHEM1\MSVOA_V\Method\SFAMVLM053024SMA.M
 Quant Title : VOC Analysis

TIC Library : C:\Database\NIST20.L
 TIC Integration Parameters: LSCINT.P

 Peak Number 2 (DEL) Alkane: Straight-Chai... Concentration Rank 3

R.T.	EstConc	Area	Relative to ISTD	R.T.
2.960	1.76 ug/L	46879	1,4-Difluorobenzene	5.532

Hit#	of 5	Tentative ID	MW	MolForm	CAS#	Qual
1		n-Hexane	86	C6H14	000110-54-3	80
2		2-Ethyl-oxetane	86	C5H10O	1010386-40-2	72
3		n-Hexane	86	C6H14	000110-54-3	53
4		Butane, 2,2,3-trimethyl-	100	C7H16	000464-06-2	53
5		Pentane, 2,2-dimethyl-	100	C7H16	000590-35-2	50



Data Path : Z:\voasrv\HPCHEM1\MSVOA_V\Data\VV062424\
Data File : VV036236.D
Acq On : 24 Jun 2024 11:11
Operator : SY/MD
Sample : VV0624SBL01
Misc : 5.00g/10.0mL/MSVOA_V/SOIL
ALS Vial : 4 Sample Multiplier: 1

Instrument :
MSVOA_V
ClientSampleId :
VBLK331

Quant Method : Z:\voasrv\HPCHEM1\MSVOA_V\Method\SFAMVLM053024SMA.M
Quant Title : VOC Analysis

TIC Library : C:\Database\NIST0.L
TIC Integration Parameters: LSCINT.P

TIC Top Hit name	RT	EstConc	Units	Response	--Internal Standard--			
					#	RT	Resp	Conc
(DEL) Alkane: S...	2.960	1.8	ug/L	46879	1	5.532	664043	25.0