

Data Path : Z:\VOASRV\HPCHEM1\MSVOA V\DATA\VV062519\
 Data File : VV011747.D
 Acq On : 25 Jun 2019 13:57
 Operator : SY/MD
 Sample : K3462-01DL 10000X
 Misc : 25ML/MSVOA V/WATER
 ALS Vial : 5 Sample Multiplier: 1

Instrument :
 MSVOA_V
 ClientSampleId :
 BFCL0DL

Quant Time: Jun 26 01:58:11 2019
 Quant Method : Z:\VOASRV\HPCHEM1\MSVOA_V\METHOD\SOMVTR062119WMA.M
 Quant Title : TRACE VOA SOM01.0
 QLast Update : Wed Jun 26 01:40:21 2019
 Response via : Initial Calibration

Internal Standards	R.T.	QIon	Response	Conc	Units	Dev(Min)
1) 1,4-Difluorobenzene	5.66	114	161008	5.00	ug/L	0.00
28) Chlorobenzene-d5	8.89	117	149503	5.00	ug/L	0.00
60) 1,4-Dichlorobenzene-d4	11.29	152	62229	5.00	ug/L	0.00

System Monitoring Compounds

4) Vinyl Chloride-d3	1.32	65	49359	4.62	ug/L	0.00
Spiked Amount	5.000	Range	40 - 130	Recovery	=	92.40%
7) Chloroethane-d5	1.57	69	35686	4.75	ug/L	0.00
Spiked Amount	5.000	Range	65 - 130	Recovery	=	95.00%
11) 1,1-Dichloroethene-d2	2.12	63	81845	3.77	ug/L	0.00
Spiked Amount	5.000	Range	60 - 125	Recovery	=	75.40%
20) 2-Butanone-d5	3.95	46	152913	54.32	ug/L	0.00
Spiked Amount	50.000	Range	40 - 130	Recovery	=	108.64%
24) Chloroform-d	4.40	84	105838	5.43	ug/L	0.00
Spiked Amount	5.000	Range	70 - 125	Recovery	=	108.60%
26) 1,2-Dichloroethane-d4	5.08	65	63062	5.38	ug/L	0.00
Spiked Amount	5.000	Range	70 - 130	Recovery	=	107.60%
32) Benzene-d6	5.09	84	218791	5.25	ug/L	0.00
Spiked Amount	5.000	Range	70 - 125	Recovery	=	105.00%
36) 1,2-Dichloropropane-d6	6.12	67	68430	5.33	ug/L	0.00
Spiked Amount	5.000	Range	60 - 140	Recovery	=	106.60%
41) Toluene-d8	7.36	98	185896	4.93	ug/L	0.00
Spiked Amount	5.000	Range	70 - 130	Recovery	=	98.60%
43) trans-1,3-Dichloropropene-	7.66	79	20837	4.65	ug/L	0.00
Spiked Amount	5.000	Range	55 - 130	Recovery	=	93.00%
46) 2-Hexanone-d5	8.14	63	113336	53.81	ug/L	0.00
Spiked Amount	50.000	Range	45 - 130	Recovery	=	107.62%
57) 1,1,2,2-Tetrachloroethane-	10.26	84	47154	5.28	ug/L	0.00
Spiked Amount	5.000	Range	65 - 120	Recovery	=	105.60%
64) 1,2-Dichlorobenzene-d4	11.67	152	64591	5.50	ug/L	0.00
Spiked Amount	5.000	Range	80 - 120	Recovery	=	110.00%

Target Compounds

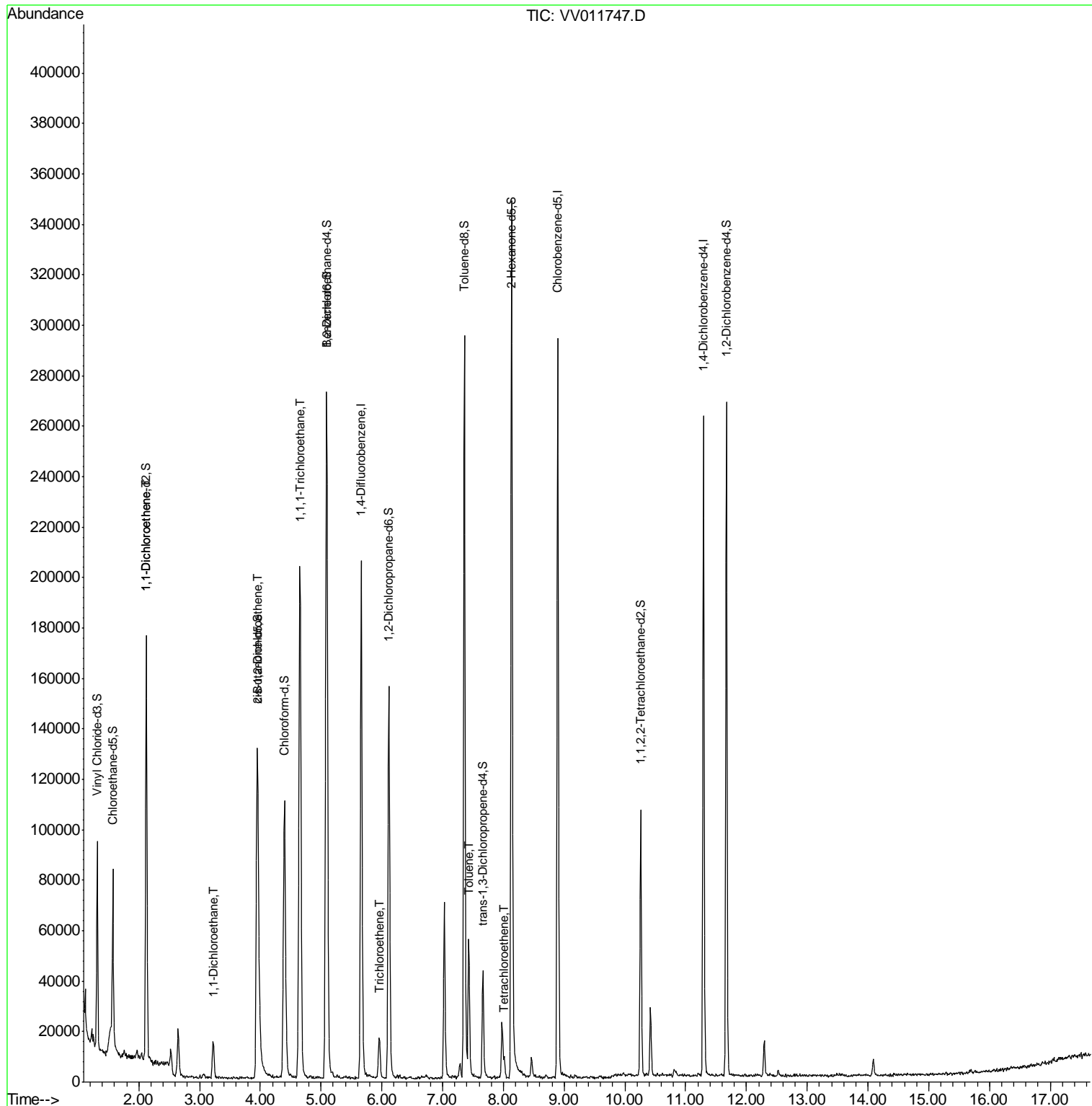
					Ovalue	
12) 1,1-Dichloroethene	2.13	96	9960	1.000	ug/L	# 1
19) 1,1-Dichloroethane	3.22	63	14262	0.612	ug/L	94
22) cis-1,2-Dichloroethene	3.96	96	26536	2.061	ug/L	99
29) 1,1,1-Trichloroethane	4.65	97	154040	8.002	ug/L	99
34) Trichloroethene	5.96	95	5212	0.397	ug/L	95
42) Toluene	7.43	91	36935	0.713	ug/L	99
47) Tetrachloroethene	8.02	164	1512	0.154	ug/L	85

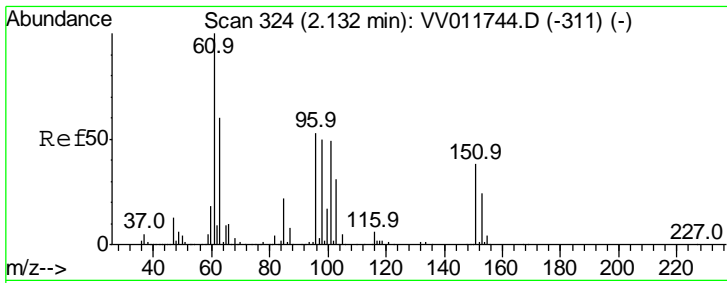
(#) = qualifier out of range (m) = manual integration (+) = signals summed

Data Path : Z:\VOASRV\HPCHEM1\MSVOA V\DATA\VV062519\
 Data File : VV011747.D
 Acq On : 25 Jun 2019 13:57
 Operator : SY/MD
 Sample : K3462-01DL 10000X
 Misc : 25ML/MSVOA V/WATER
 ALS Vial : 5 Sample Multiplier: 1

Instrument :
 MSVOA_V
 ClientSampled :
 BFCL0DL

Quant Time: Jun 26 01:58:11 2019
 Quant Method : Z:\VOASRV\HPCHEM1\MSVOA_V\METHOD\SOMVTR062119WMA.M
 Quant Title : TRACE VOA SOM01.0
 QLast Update : Wed Jun 26 01:40:21 2019
 Response via : Initial Calibration

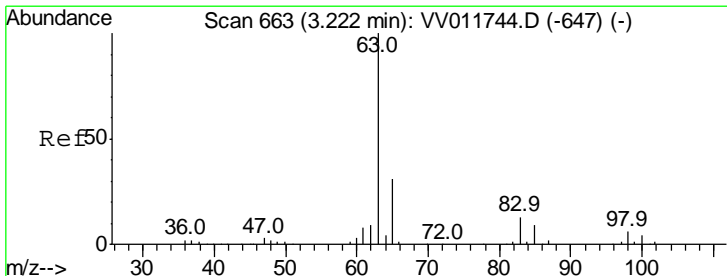
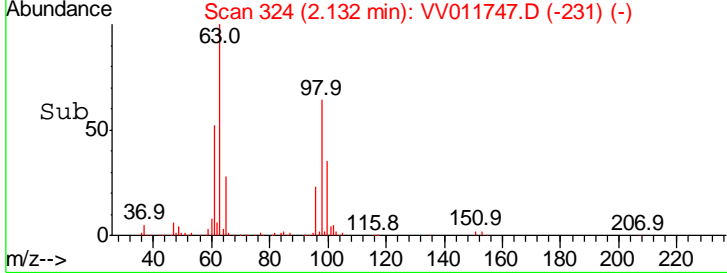
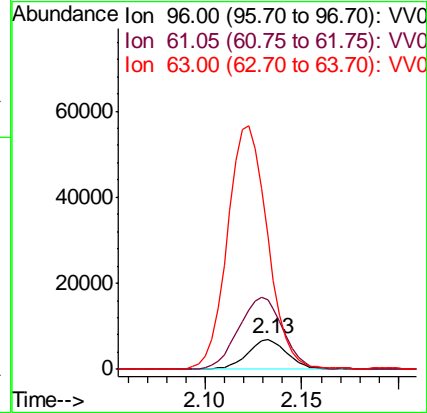
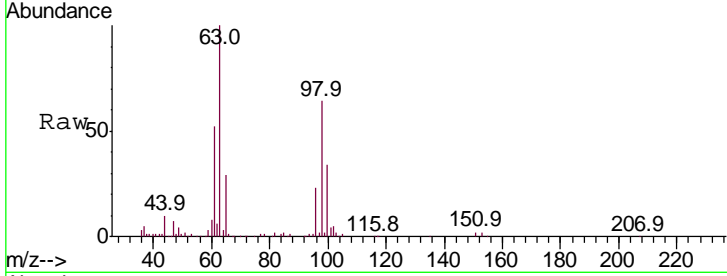




#12
 1,1-Dichloroethene
 Concen: 1.000 ug/L
 RT: 2.13 min Scan# 324
 Delta R.T. 0.00 min
 Lab File: VV011747.D
 Acq: 25 Jun 2019 13:57

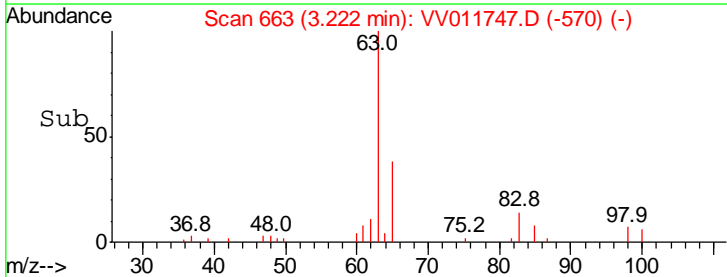
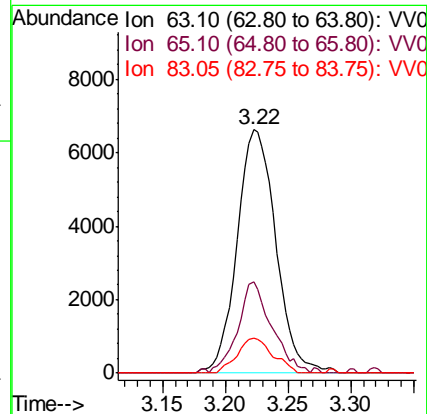
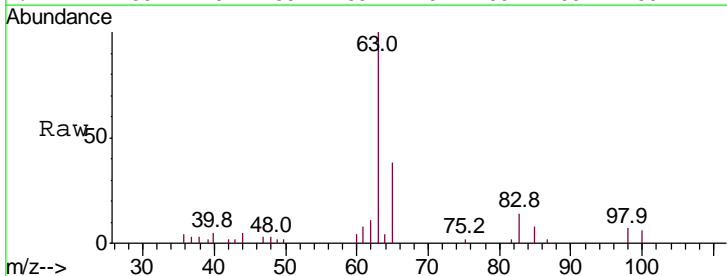
Instrument :
 MSVOA_V
ClientSampled :
 BFCL0DL

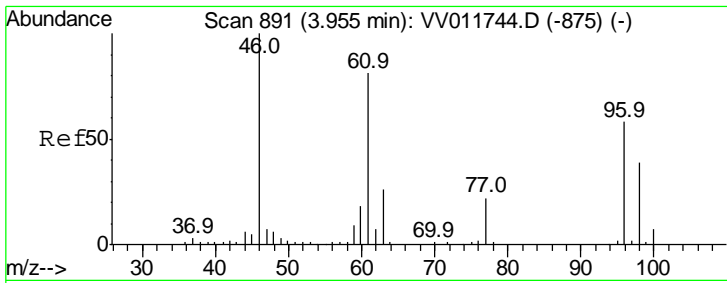
Tgt Ion	Resp	Lower	Upper
96	100		
61	231.7	131.5	244.1
63	441.8	91.8	170.4#



#19
 1,1-Dichloroethane
 Concen: 0.612 ug/L
 RT: 3.22 min Scan# 663
 Delta R.T. 0.00 min
 Lab File: VV011747.D
 Acq: 25 Jun 2019 13:57

Tgt Ion	Resp	Lower	Upper
63	100		
65	37.7	23.0	42.8
83	14.1	9.5	17.7

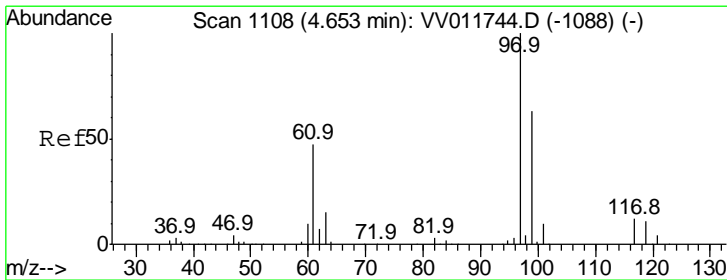
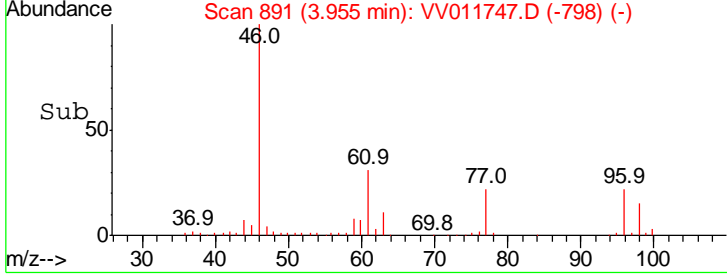
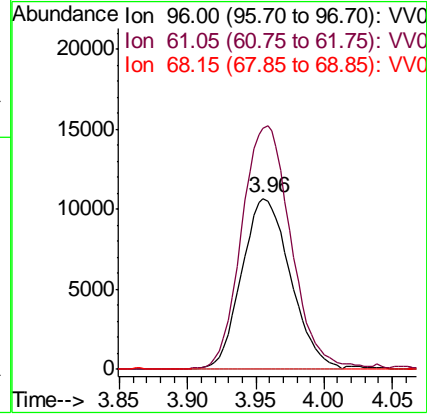
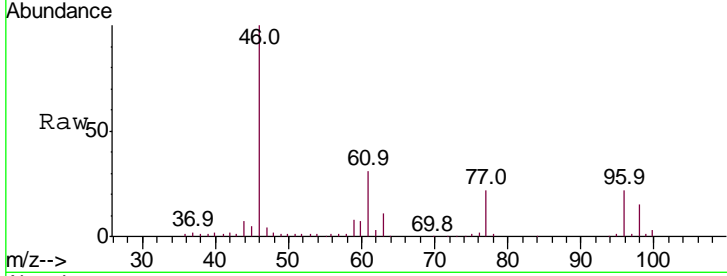




#22
 cis-1,2-Dichloroethene
 Concen: 2.061 ug/L
 RT: 3.96 min Scan# 891
 Delta R.T. 0.00 min
 Lab File: VV011747.D
 Acq: 25 Jun 2019 13:57

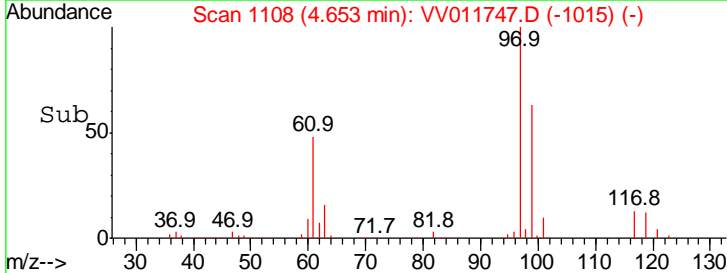
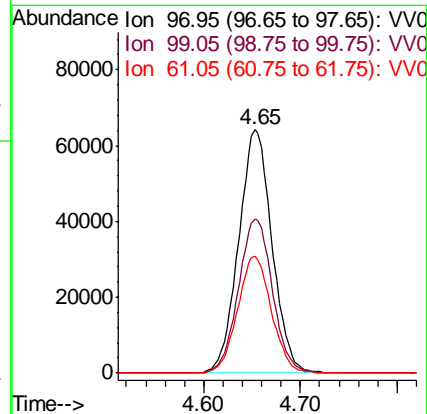
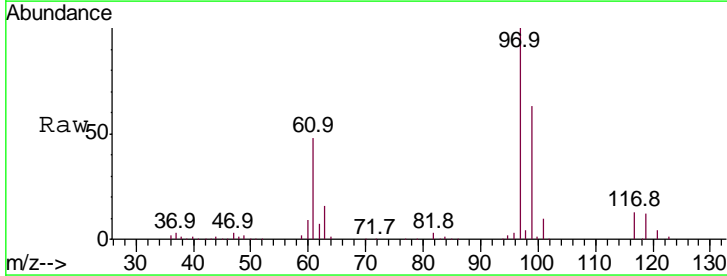
Instrument :
 MSVOA_V
ClientSampled :
 BFCL0DL

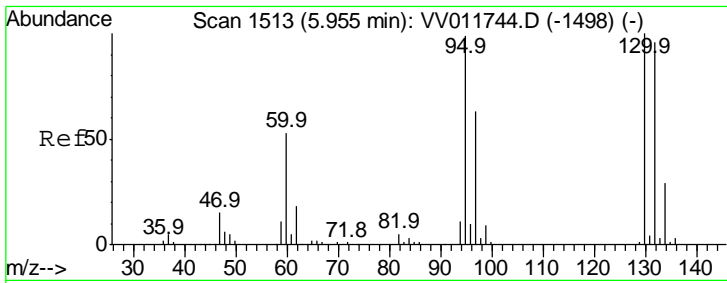
Tgt Ion	Resp	Lower	Upper
96	100		
61	141.2	97.9	181.7
68	0.0	0.0	0.0



#29
 1,1,1-Trichloroethane
 Concen: 8.002 ug/L
 RT: 4.65 min Scan# 1108
 Delta R.T. 0.00 min
 Lab File: VV011747.D
 Acq: 25 Jun 2019 13:57

Tgt Ion	Resp	Lower	Upper
97	100		
99	64.5	51.6	77.4
61	48.6	39.8	59.6

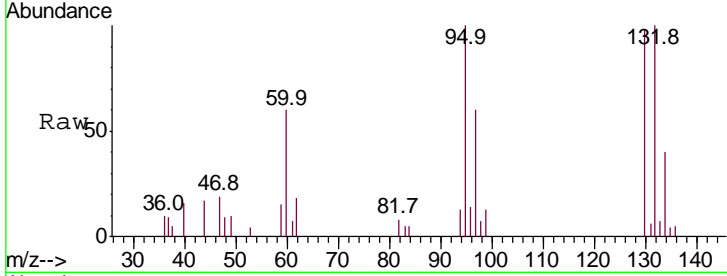




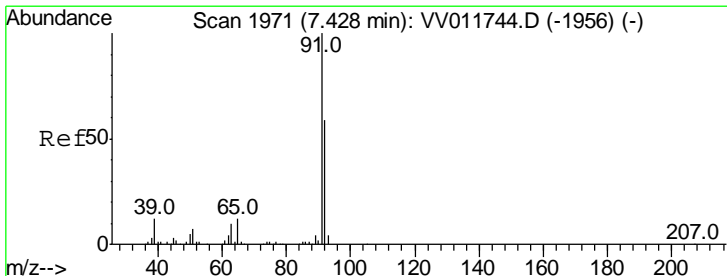
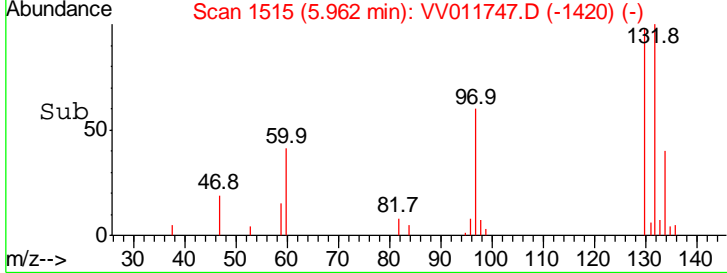
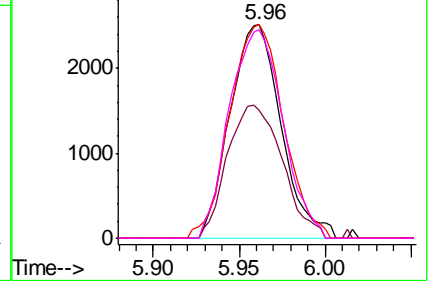
#34
 Trichloroethene
 Concen: 0.397 ug/L
 RT: 5.96 min Scan# 1515
 Delta R.T. 0.01 min
 Lab File: VV011747.D
 Acq: 25 Jun 2019 13:57

Instrument :
 MSVOA_V
 ClientSampled :
 BFCL0DL

Tgt Ion	Resp	Lower	Upper
95	100		
97	59.9	44.4	82.5
132	100.1	65.0	120.6
130	97.8	67.1	124.7

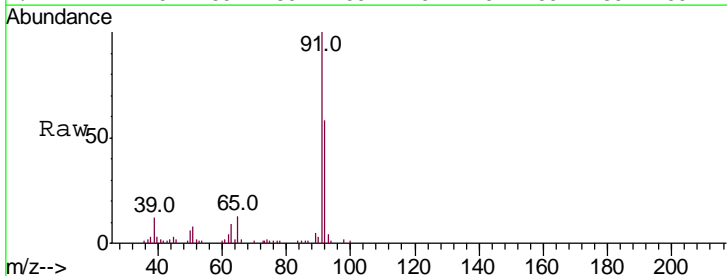


Abundance Ion 95.00 (94.70 to 95.70): VV0
 Ion 96.95 (96.65 to 97.65): VV0
 Ion 131.95 (131.65 to 132.65): VV0
 Ion 129.95 (129.65 to 130.65): VV0

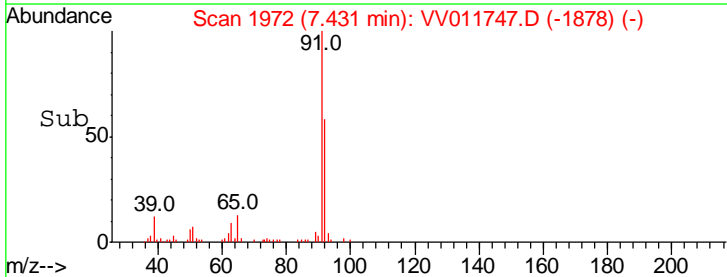
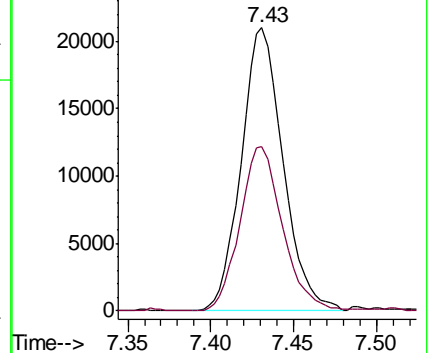


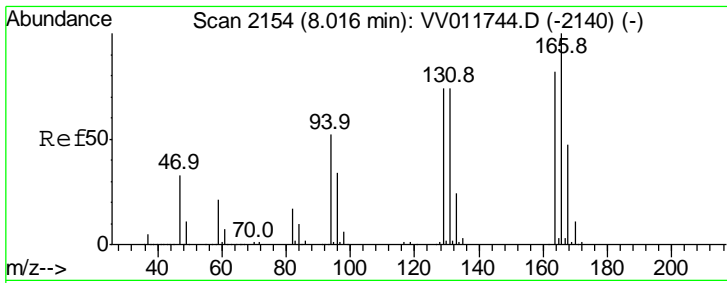
#42
 Toluene
 Concen: 0.713 ug/L
 RT: 7.43 min Scan# 1972
 Delta R.T. 0.00 min
 Lab File: VV011747.D
 Acq: 25 Jun 2019 13:57

Tgt Ion	Resp	Lower	Upper
91	100		
92	58.2	40.3	74.9



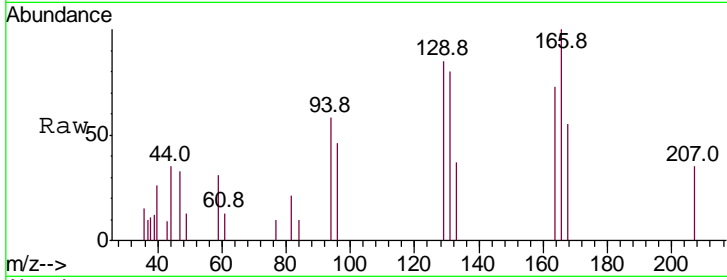
Abundance Ion 91.15 (90.85 to 91.85): VV0
 Ion 92.15 (91.85 to 92.85): VV0





#47
 Tetrachloroethene
 Concen: 0.154 ug/L
 RT: 8.02 min Scan# 2154
 Delta R.T. 0.00 min
 Lab File: VV011747.D
 Acq: 25 Jun 2019 13:57

Instrument :
 MSVOA_V
 ClientSampleId :
 BFCL0DL



Tot Ion:164 Resp: 1512

Ion	Ratio	Lower	Upper
164	100		
129	115.6	69.7	129.5
131	109.4	64.6	120.0
166	136.4	86.4	160.4

