

Data Path : Z:\VOASRV\HPCHEM1\MSVOA V\DATA\VV062620\  
 Data File : VV017197.D  
 Acq On : 26 Jun 2020 21:18  
 Operator : SY/MD  
 Sample : L3103-16  
 Misc : 5.0mL/MSVOA V/WATER  
 ALS Vial : 19 Sample Multiplier: 1

Instrument :  
 MSVOA\_V  
 ClientSampleId :  
 F9Q73

Quant Time: Jun 27 01:52:33 2020  
 Quant Method : Z:\VOASRV\HPCHEM1\MSVOA\_V\METHOD\SOMVLM060820WMA.M  
 Quant Title : VOC Analysis  
 QLast Update : Sat Jun 27 00:23:55 2020  
 Response via : Initial Calibration

| Internal Standards         | R.T.  | QIon | Response | Conc  | Units | Dev(Min) |
|----------------------------|-------|------|----------|-------|-------|----------|
| 1) 1,4-Difluorobenzene     | 5.64  | 114  | 348334   | 50.00 | ug/L  | 0.00     |
| 28) Chlorobenzene-d5       | 8.87  | 117  | 333396   | 50.00 | ug/L  | 0.00     |
| 60) 1,4-Dichlorobenzene-d4 | 11.27 | 152  | 151889   | 50.00 | ug/L  | 0.00     |

## System Monitoring Compounds

|                                |         |       |          |          |      |        |
|--------------------------------|---------|-------|----------|----------|------|--------|
| 4) Vinyl Chloride-d3           | 1.32    | 65    | 100653   | 40.95    | ug/L | 0.00   |
| Spiked Amount                  | 50.000  | Range | 60 - 135 | Recovery | =    | 81.90% |
| 7) Chloroethane-d5             | 1.58    | 69    | 72501    | 49.16    | ug/L | 0.00   |
| Spiked Amount                  | 50.000  | Range | 70 - 130 | Recovery | =    | 98.32% |
| 11) 1,1-Dichloroethene-d2      | 2.12    | 63    | 156008   | 37.80    | ug/L | 0.00   |
| Spiked Amount                  | 50.000  | Range | 60 - 125 | Recovery | =    | 75.60% |
| 21) 2-Butanone-d5              | 3.91    | 46    | 165617   | 91.04    | ug/L | 0.00   |
| Spiked Amount                  | 100.000 | Range | 40 - 130 | Recovery | =    | 91.04% |
| 24) Chloroform-d               | 4.38    | 84    | 228316   | 45.68    | ug/L | 0.00   |
| Spiked Amount                  | 50.000  | Range | 70 - 125 | Recovery | =    | 91.36% |
| 26) 1,2-Dichloroethane-d4      | 5.06    | 65    | 167245   | 49.20    | ug/L | 0.00   |
| Spiked Amount                  | 50.000  | Range | 70 - 125 | Recovery | =    | 98.40% |
| 32) Benzene-d6                 | 5.08    | 84    | 430035   | 44.75    | ug/L | 0.00   |
| Spiked Amount                  | 50.000  | Range | 70 - 125 | Recovery | =    | 89.50% |
| 36) 1,2-Dichloropropane-d6     | 6.09    | 67    | 130700   | 43.63    | ug/L | 0.00   |
| Spiked Amount                  | 50.000  | Range | 70 - 120 | Recovery | =    | 87.26% |
| 41) Toluene-d8                 | 7.34    | 98    | 395026   | 44.79    | ug/L | 0.00   |
| Spiked Amount                  | 50.000  | Range | 80 - 120 | Recovery | =    | 89.58% |
| 43) trans-1,3-Dichloropropene- | 7.64    | 79    | 68215    | 43.72    | ug/L | 0.00   |
| Spiked Amount                  | 50.000  | Range | 60 - 125 | Recovery | =    | 87.44% |
| 47) 2-Hexanone-d5              | 8.11    | 63    | 109125   | 83.55    | ug/L | 0.00   |
| Spiked Amount                  | 100.000 | Range | 45 - 130 | Recovery | =    | 83.55% |
| 57) 1,1,2,2-Tetrachloroethane- | 10.24   | 84    | 172434   | 43.48    | ug/L | 0.00   |
| Spiked Amount                  | 50.000  | Range | 65 - 120 | Recovery | =    | 86.96% |
| 64) 1,2-Dichlorobenzene-d4     | 11.65   | 152   | 160561   | 49.53    | ug/L | 0.00   |
| Spiked Amount                  | 50.000  | Range | 80 - 120 | Recovery | =    | 99.06% |

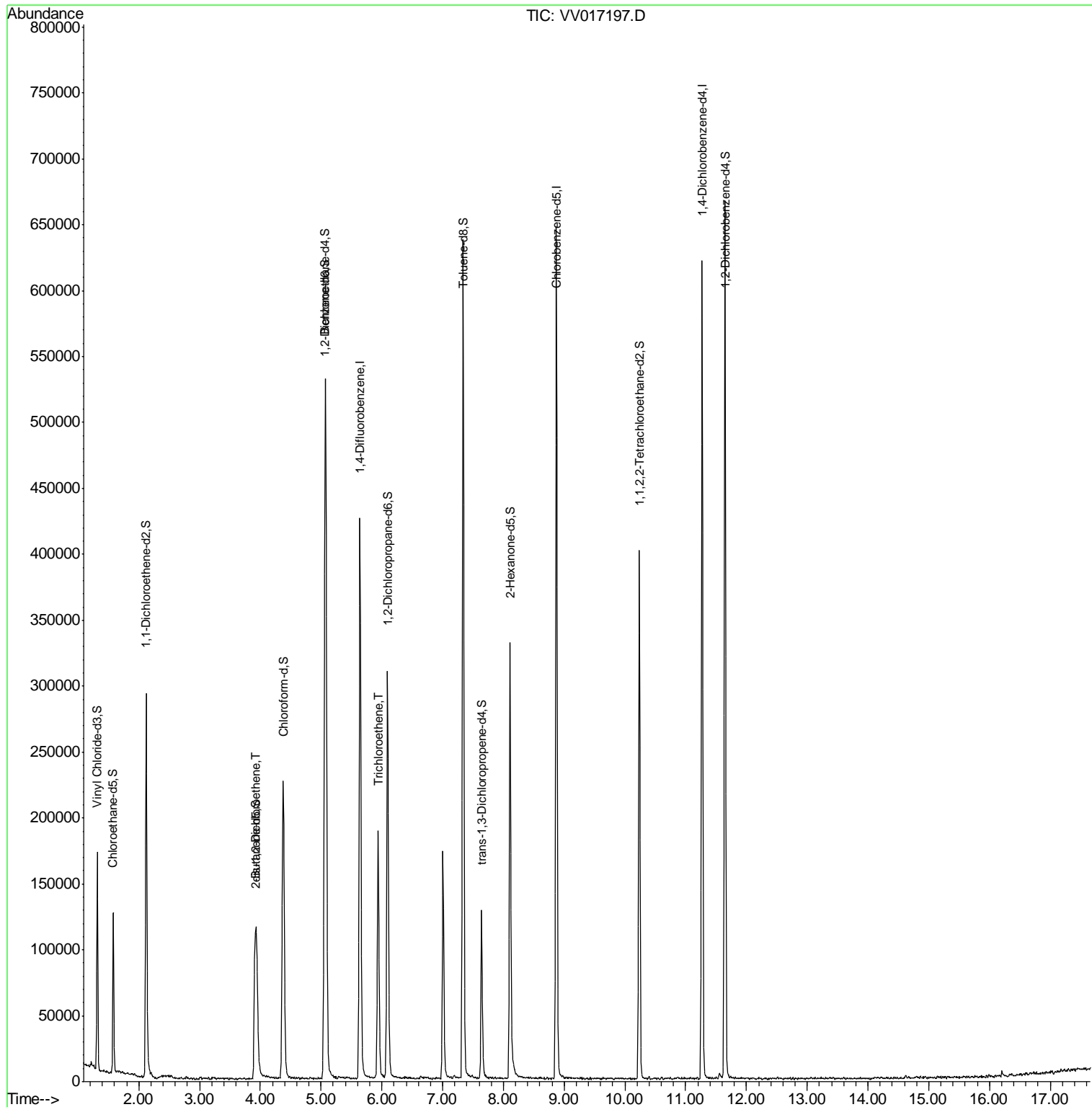
| Target Compounds           |      |    |       |             | Ovalue |
|----------------------------|------|----|-------|-------------|--------|
| 20) cis-1,2-Dichloroethene | 3.94 | 96 | 35543 | 13.831 ug/L | 97     |
| 34) Trichloroethene        | 5.94 | 95 | 61512 | 23.251 ug/L | 96     |

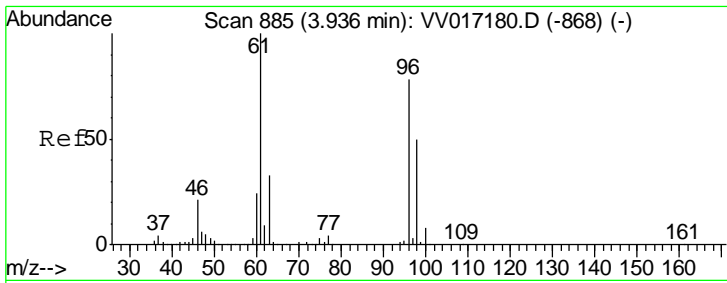
(#) = qualifier out of range (m) = manual integration (+) = signals summed

Data Path : Z:\VOASRV\HPCHEM1\MSVOA V\DATA\VV062620\  
 Data File : VV017197.D  
 Acq On : 26 Jun 2020 21:18  
 Operator : SY/MD  
 Sample : L3103-16  
 Misc : 5.0mL/MSVOA V/WATER  
 ALS Vial : 19 Sample Multiplier: 1

Instrument :  
 MSVOA\_V  
 Client Sampled :  
 F9Q73

Quant Time: Jun 27 01:52:33 2020  
 Quant Method : Z:\VOASRV\HPCHEM1\MSVOA\_V\METHOD\SOMVLM060820WMA.M  
 Quant Title : VOC Analysis  
 QLast Update : Sat Jun 27 00:23:55 2020  
 Response via : Initial Calibration

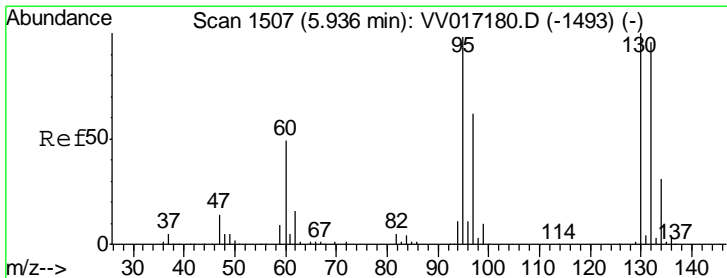
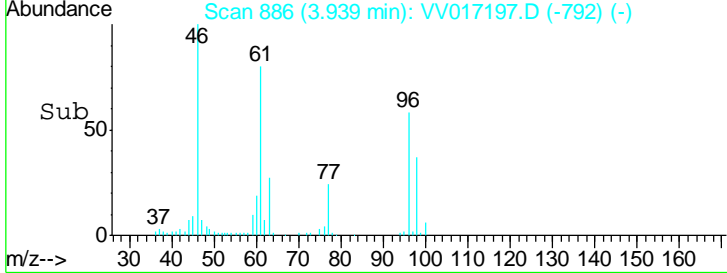
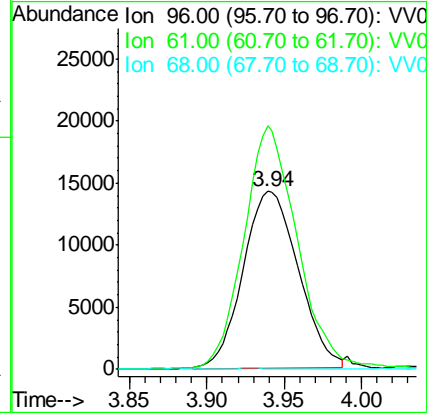
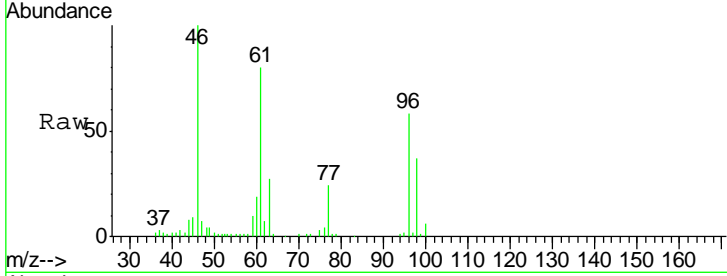




#20  
 cis-1,2-Dichloroethene  
 Concen: 13.831 ug/L  
 RT: 3.94 min Scan# 886  
 Delta R.T. 0.00 min  
 Lab File: VV017197.D  
 Acq: 26 Jun 2020 21:18

Instrument :  
 MSVOA\_V  
 ClientSampled :  
 F9Q73

| Tgt Ion | Resp  | Lower | Upper |
|---------|-------|-------|-------|
| 96      | 3543  |       |       |
| 61      | 136.9 | 93.4  | 173.4 |
| 68      | 0.0   | 0.0   | 0.0   |



#34  
 Trichloroethene  
 Concen: 23.251 ug/L  
 RT: 5.94 min Scan# 1508  
 Delta R.T. 0.00 min  
 Lab File: VV017197.D  
 Acq: 26 Jun 2020 21:18

| Tgt Ion | Resp  | Lower | Upper |
|---------|-------|-------|-------|
| 95      | 61512 |       |       |
| 97      | 67.0  | 44.3  | 82.3  |
| 132     | 99.5  | 67.9  | 126.1 |
| 130     | 107.4 | 72.2  | 134.2 |

