

Data Path : Z:\VOASRV\HPCHEM1\MSVOA V\DATA\VV062620\
 Data File : VV017205.D
 Acq On : 27 Jun 2020 01:34
 Operator : SY/MD
 Sample : L3118-02
 Misc : 5.0mL/MSVOA V/WATER
 ALS Vial : 30 Sample Multiplier: 1

Instrument :
 MSVOA_V
 ClientSampleId :
 C0F58

Quant Time: Jun 27 04:44:41 2020
 Quant Method : Z:\VOASRV\HPCHEM1\MSVOA_V\METHOD\SOMVLM060820WMA.M
 Quant Title : VOC Analysis
 QLast Update : Sat Jun 27 03:31:05 2020
 Response via : Initial Calibration

Internal Standards	R.T.	QIon	Response	Conc	Units	Dev(Min)
1) 1,4-Difluorobenzene	5.64	114	349599	50.00	ug/L	0.00
28) Chlorobenzene-d5	8.87	117	334404	50.00	ug/L	0.00
60) 1,4-Dichlorobenzene-d4	11.27	152	152639	50.00	ug/L	0.00

System Monitoring Compounds

4) Vinyl Chloride-d3	1.32	65	96576	39.15	ug/L	0.00
Spiked Amount	50.000	Range	60 - 135	Recovery	=	78.30%
7) Chloroethane-d5	1.58	69	64379	43.49	ug/L	0.00
Spiked Amount	50.000	Range	70 - 130	Recovery	=	86.98%
11) 1,1-Dichloroethene-d2	2.12	63	155394	37.51	ug/L	0.00
Spiked Amount	50.000	Range	60 - 125	Recovery	=	75.02%
21) 2-Butanone-d5	3.90	46	158317	86.71	ug/L	0.00
Spiked Amount	100.000	Range	40 - 130	Recovery	=	86.71%
24) Chloroform-d	4.38	84	227017	45.26	ug/L	0.00
Spiked Amount	50.000	Range	70 - 125	Recovery	=	90.52%
26) 1,2-Dichloroethane-d4	5.06	65	164615	48.25	ug/L	0.00
Spiked Amount	50.000	Range	70 - 125	Recovery	=	96.50%
32) Benzene-d6	5.08	84	426728	44.27	ug/L	0.00
Spiked Amount	50.000	Range	70 - 125	Recovery	=	88.54%
36) 1,2-Dichloropropane-d6	6.09	67	127690	42.50	ug/L	0.00
Spiked Amount	50.000	Range	70 - 120	Recovery	=	85.00%
41) Toluene-d8	7.34	98	382684	43.26	ug/L	0.00
Spiked Amount	50.000	Range	80 - 120	Recovery	=	86.52%
43) trans-1,3-Dichloropropene-	7.64	79	66327	42.38	ug/L	0.00
Spiked Amount	50.000	Range	60 - 125	Recovery	=	84.76%
47) 2-Hexanone-d5	8.11	63	98328	75.06	ug/L	0.00
Spiked Amount	100.000	Range	45 - 130	Recovery	=	75.06%
57) 1,1,2,2-Tetrachloroethane-	10.24	84	162086	40.75	ug/L	0.00
Spiked Amount	50.000	Range	65 - 120	Recovery	=	81.50%
64) 1,2-Dichlorobenzene-d4	11.65	152	155430	47.72	ug/L	0.00
Spiked Amount	50.000	Range	80 - 120	Recovery	=	95.44%

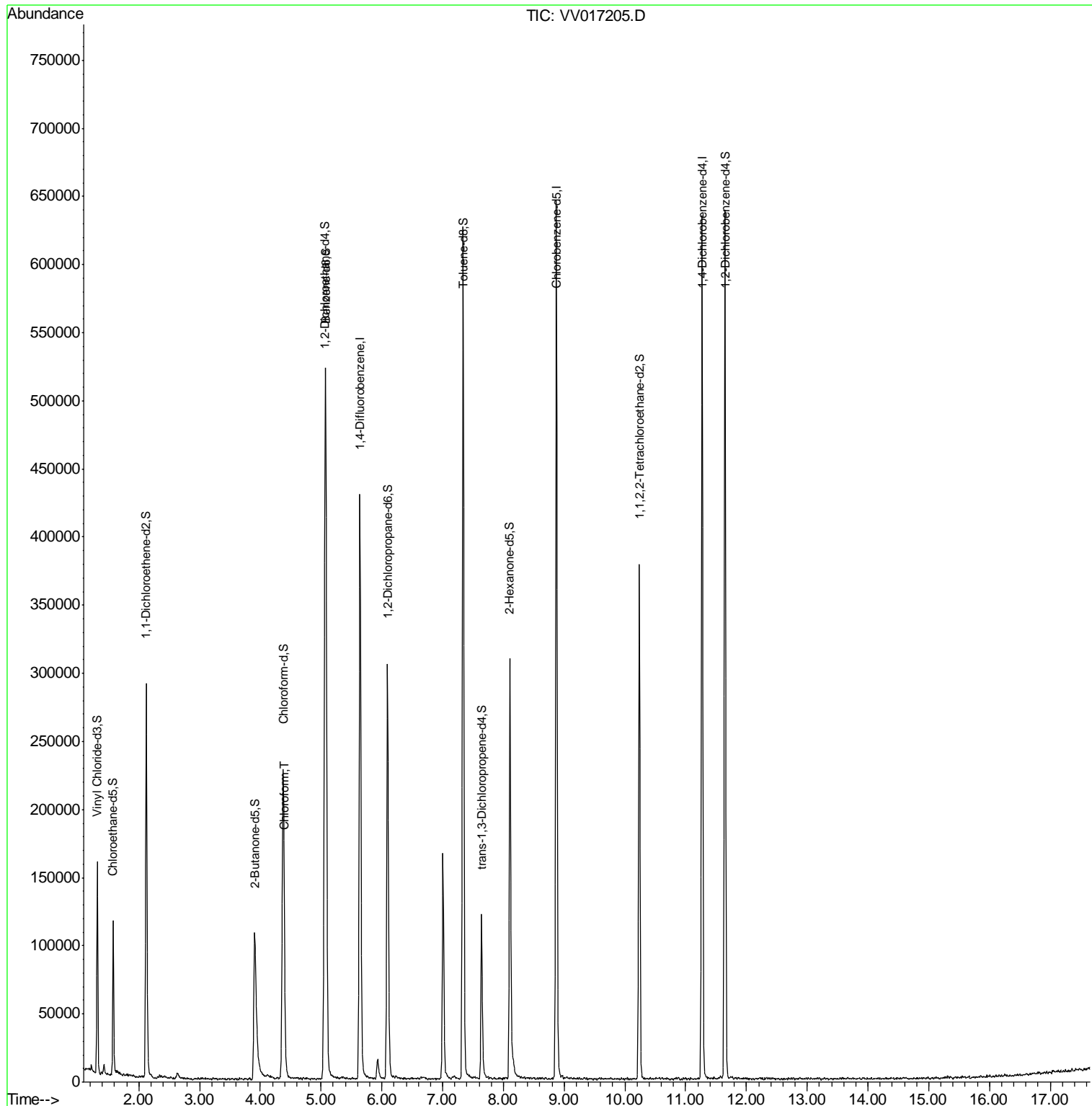
Target Compounds	R.T.	QIon	Response	Conc	Units	Ovalue
25) Chloroform	4.40	83	9302	2.033	ug/L	79

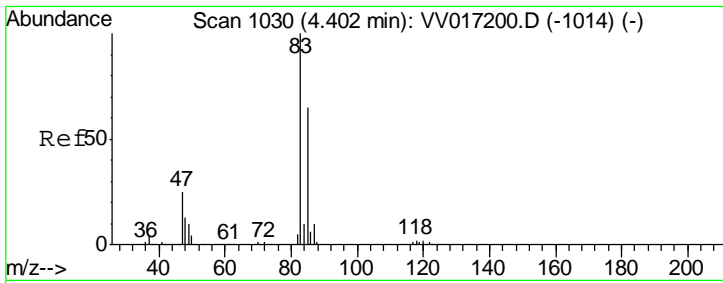
(#) = qualifier out of range (m) = manual integration (+) = signals summed

Data Path : Z:\VOASRV\HPCHEM1\MSVOA V\DATA\VV062620\
 Data File : VV017205.D
 Acq On : 27 Jun 2020 01:34
 Operator : SY/MD
 Sample : L3118-02
 Misc : 5.0mL/MSVOA V/WATER
 ALS Vial : 30 Sample Multiplier: 1

Instrument :
 MSVOA_V
 ClientSampled :
 C0F58

Quant Time: Jun 27 04:44:41 2020
 Quant Method : Z:\VOASRV\HPCHEM1\MSVOA_V\METHOD\SOMVLM060820WMA.M
 Quant Title : VOC Analysis
 QLast Update : Sat Jun 27 03:31:05 2020
 Response via : Initial Calibration





#25
 Chloroform
 Concen: 2.033 ug/L
 RT: 4.40 min Scan# 1030
 Delta R.T. -0.00 min
 Lab File: VV017205.D
 Acq: 27 Jun 2020 01:34

Instrument :
 MSVOA_V
 ClientSampled :
 C0F58

Tot Ion: 83 Resp: 9302
 Ion Ratio Lower Upper
 83 100
 85 79.7 44.1 81.9

