

Data Path : Z:\VOASRV\HPCHEM1\MSVOA V\DATA\VV062620\
 Data File : VV017220.D
 Acq On : 27 Jun 2020 07:21
 Operator : SY/MD
 Sample : L3133-08
 Misc : 5.0mL/MSVOA V/WATER
 ALS Vial : 45 Sample Multiplier: 1

Instrument :
 MSVOA_V
ClientSampled :
 F9Q34

Manual Integrations
APPROVED
 MMDadoda
 6/30/2020 1:57:53 PM

Quant Time: Jun 29 00:30:20 2020
 Quant Method : Z:\VOASRV\HPCHEM1\MSVOA_V\METHOD\SOMVLM060820WMA.M
 Quant Title : VOC Analysis
 QLast Update : Mon Jun 29 00:10:58 2020
 Response via : Initial Calibration

Internal Standards	R.T.	QIon	Response	Conc	Units	Dev(Min)
1) 1,4-Difluorobenzene	5.64	114	345343	50.00	ug/L	0.00
28) Chlorobenzene-d5	8.87	117	328674	50.00	ug/L	0.00
60) 1,4-Dichlorobenzene-d4	11.27	152	151060	50.00	ug/L	0.00

System Monitoring Compounds

4) Vinyl Chloride-d3	1.32	65	90370	37.09	ug/L	0.00
Spiked Amount	50.000	Range	60 - 135	Recovery	=	74.18%
7) Chloroethane-d5	1.58	69	62015	42.41	ug/L	0.00
Spiked Amount	50.000	Range	70 - 130	Recovery	=	84.82%
11) 1,1-Dichloroethene-d2	2.12	63	148007	36.17	ug/L	0.00
Spiked Amount	50.000	Range	60 - 125	Recovery	=	72.34%
21) 2-Butanone-d5	3.91	46	150784	83.60	ug/L	0.00
Spiked Amount	100.000	Range	40 - 130	Recovery	=	83.60%
24) Chloroform-d	4.38	84	219486	44.30	ug/L	0.00
Spiked Amount	50.000	Range	70 - 125	Recovery	=	88.60%
26) 1,2-Dichloroethane-d4	5.06	65	162654	48.26	ug/L	0.00
Spiked Amount	50.000	Range	70 - 125	Recovery	=	96.52%
32) Benzene-d6	5.08	84	413338	43.63	ug/L	0.00
Spiked Amount	50.000	Range	70 - 125	Recovery	=	87.26%
36) 1,2-Dichloropropane-d6	6.10	67	121293	41.07	ug/L	0.00
Spiked Amount	50.000	Range	70 - 120	Recovery	=	82.14%
41) Toluene-d8	7.34	98	371974	42.78	ug/L	0.00
Spiked Amount	50.000	Range	80 - 120	Recovery	=	85.56%
43) trans-1,3-Dichloropropene-	7.64	79	60408	39.27	ug/L	0.00
Spiked Amount	50.000	Range	60 - 125	Recovery	=	78.54%
47) 2-Hexanone-d5	8.11	63	97352	75.61	ug/L	0.00
Spiked Amount	100.000	Range	45 - 130	Recovery	=	75.61%
57) 1,1,2,2-Tetrachloroethane-	10.24	84	162914	41.67	ug/L	0.00
Spiked Amount	50.000	Range	65 - 120	Recovery	=	83.34%
64) 1,2-Dichlorobenzene-d4	11.65	152	155168	48.13	ug/L	0.00
Spiked Amount	50.000	Range	80 - 120	Recovery	=	96.26%

Target Compounds

Target Compounds	R.T.	QIon	Response	Conc	Units	Ovalue
13) Acetone	2.19	43	25053	21.083	ug/L	100
20) cis-1,2-Dichloroethene	3.95	96	6839	2.684	ug/L	92
22) 2-Butanone	4.02	43	4908m	2.678	ug/L	
34) Trichloroethene	5.94	95	52439	20.106	ug/L	99

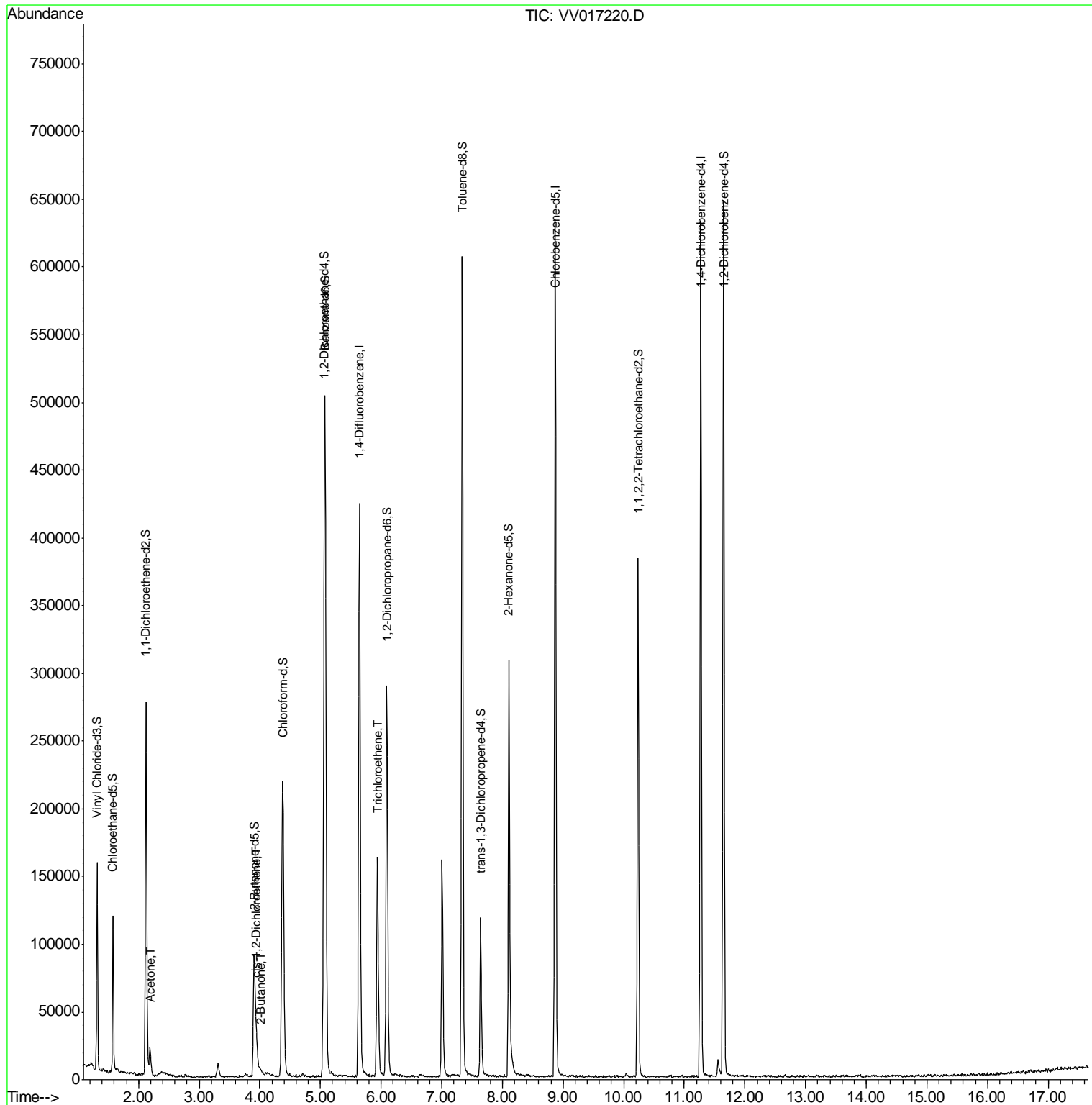
(#) = qualifier out of range (m) = manual integration (+) = signals summed

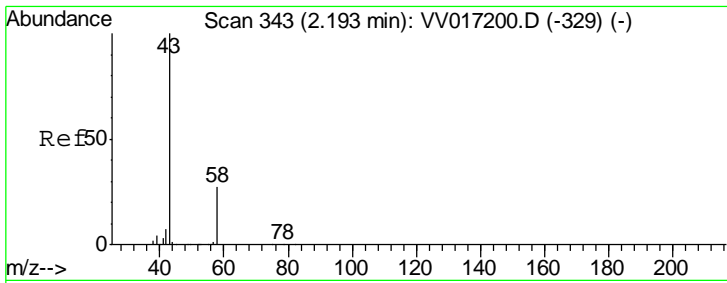
Data Path : Z:\VOASRV\HPCHEM1\MSVOA V\DATA\VV062620\
 Data File : VV017220.D
 Acq On : 27 Jun 2020 07:21
 Operator : SY/MD
 Sample : L3133-08
 Misc : 5.0mL/MSVOA V/WATER
 ALS Vial : 45 Sample Multiplier: 1

Instrument :
 MSVOA_V
 Client Sampled :
 F9Q34

Manual Integrations
APPROVED
 MMDadoda
 6/30/2020 1:57:53 PM

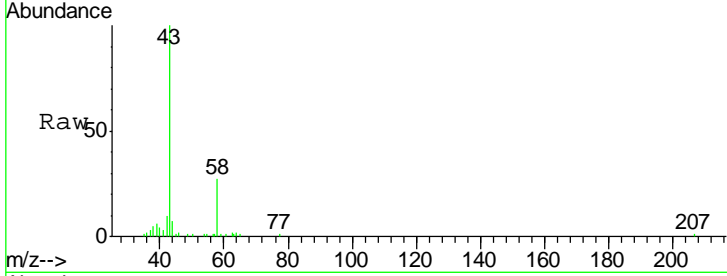
Quant Time: Jun 29 00:30:20 2020
 Quant Method : Z:\VOASRV\HPCHEM1\MSVOA_V\METHOD\SOMVLM060820WMA.M
 Quant Title : VOC Analysis
 QLast Update : Mon Jun 29 00:10:58 2020
 Response via : Initial Calibration





#13
 Acetone
 Concen: 21.083 ug/L
 RT: 2.19 min Scan# 342
 Delta R.T. -0.00 min
 Lab File: VV017220.D
 Acq: 27 Jun 2020 07:21

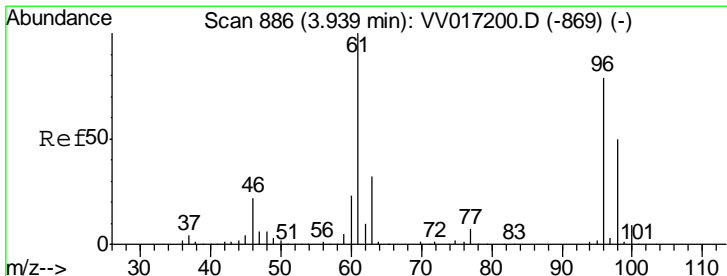
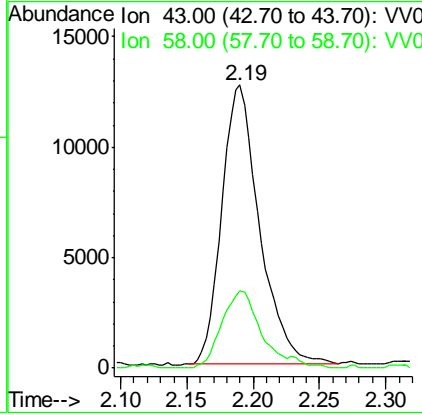
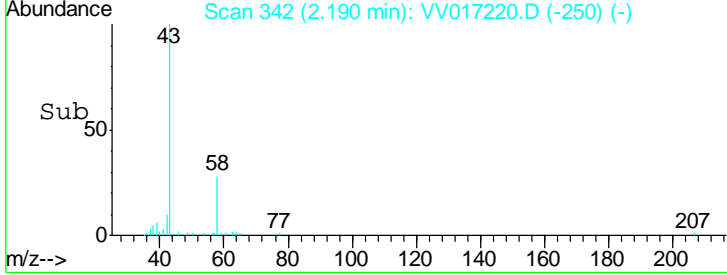
Instrument : MSVOA_V
 ClientSampled : F9Q34



Tgt Ion: 43 Resp: 25053

Ion	Ratio	Lower	Upper
43	100		
58	27.8	0.0	55.2

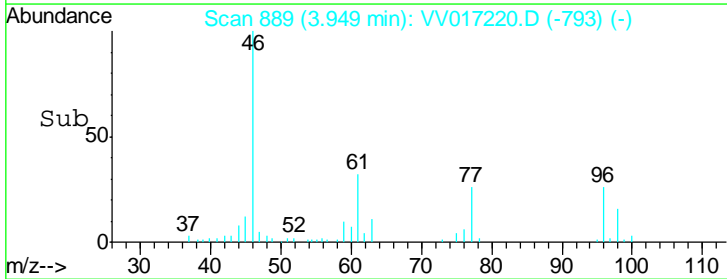
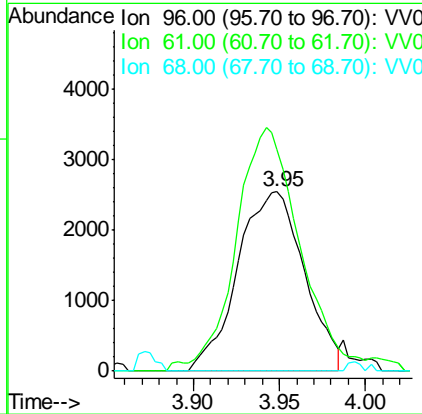
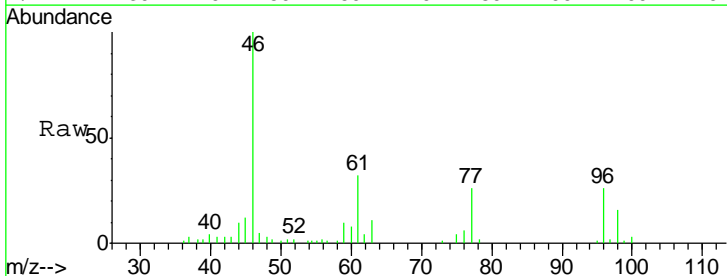
Manual Integrations APPROVED
 MMDadoda
 6/30/2020 1:57:53 PM

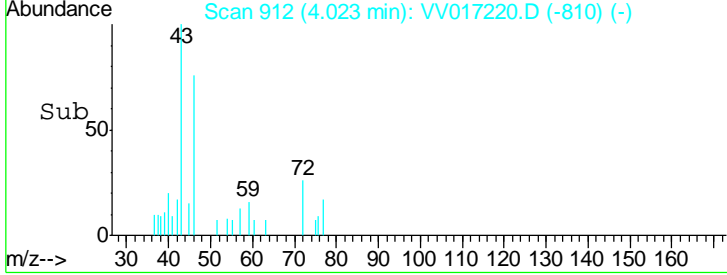
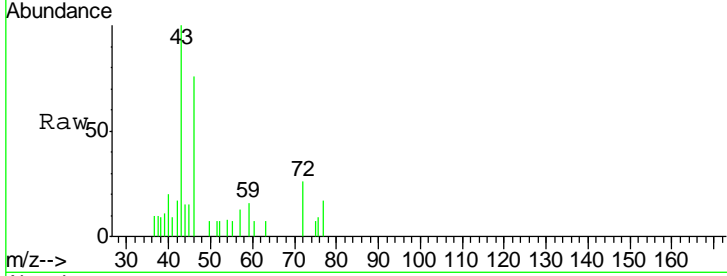
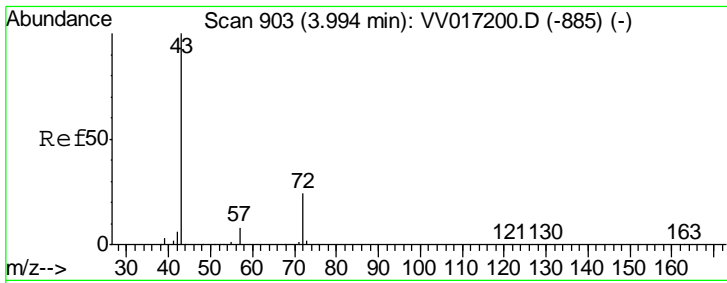


#20
 cis-1,2-Dichloroethene
 Concen: 2.684 ug/L
 RT: 3.95 min Scan# 889
 Delta R.T. 0.01 min
 Lab File: VV017220.D
 Acq: 27 Jun 2020 07:21

Tgt Ion: 96 Resp: 6839

Ion	Ratio	Lower	Upper
96	100		
61	124.0	93.4	173.4
68	0.0	0.0	0.0



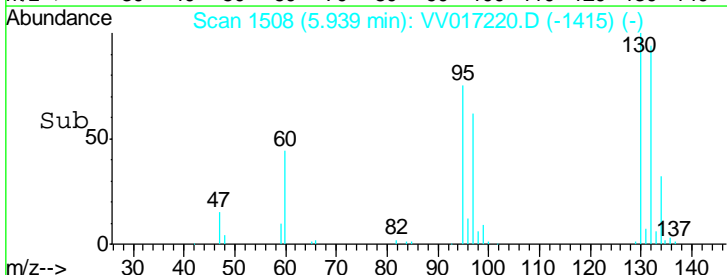
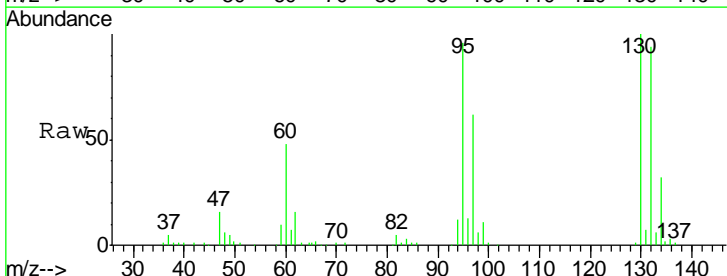
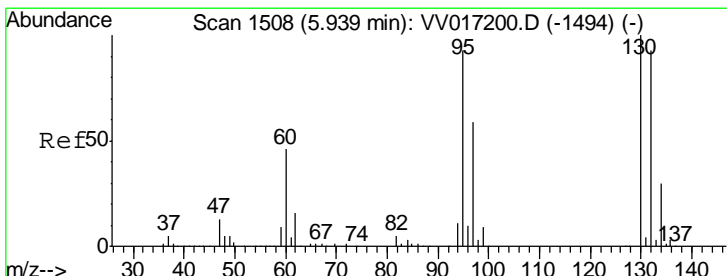
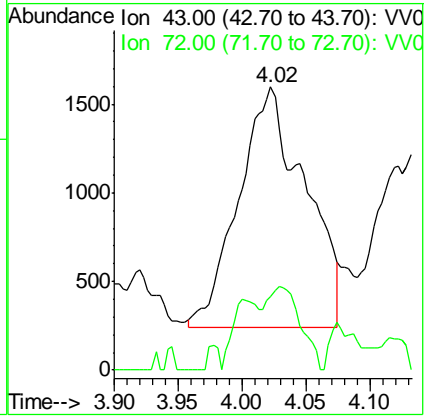


#22
 2-Butanone
 Concen: 2.678 ug/L m
 RT: 4.02 min Scan# 912
 Delta R.T. 0.03 min
 Lab File: VV017220.D
 Acq: 27 Jun 2020 07:21

Tgt Ion	Ratio	Lower	Upper
43	100		
72	17.0	12.4	37.4

Instrument : MSVOA_V
 ClientSampled : F9Q34

Manual Integrations
APPROVED
 MMDadoda
 6/30/2020 1:57:53 PM



#34
 Trichloroethene
 Concen: 20.106 ug/L
 RT: 5.94 min Scan# 1508
 Delta R.T. -0.00 min
 Lab File: VV017220.D
 Acq: 27 Jun 2020 07:21

Tgt Ion	Ratio	Lower	Upper
95	100		
97	64.4	44.3	82.3
132	97.9	67.9	126.1
130	104.1	72.2	134.2

