

Data Path : Z:\VOASRV\HPCHEM1\MSVOA V\DATA\VV063020\  
 Data File : VV017264.D  
 Acq On : 30 Jun 2020 16:46  
 Operator : SY/MD  
 Sample : L3168-02  
 Misc : 25.0mL/MSVOA V/WATER  
 ALS Vial : 11 Sample Multiplier: 1

Instrument :  
 MSVOA\_V  
 ClientSampleId :  
 C0AH7

Quant Time: Jul 01 06:42:38 2020  
 Quant Method : Z:\VOASRV\HPCHEM1\MSVOA\_V\METHOD\SOMVTR061720WMA.M  
 Quant Title : TRACE VOA SOM01.0  
 QLast Update : Wed Jul 01 06:00:36 2020  
 Response via : Initial Calibration

| Internal Standards         | R.T.  | QIon | Response | Conc | Units | Dev(Min) |
|----------------------------|-------|------|----------|------|-------|----------|
| 1) 1,4-Difluorobenzene     | 5.64  | 114  | 161073   | 5.00 | ug/L  | 0.00     |
| 28) Chlorobenzene-d5       | 8.87  | 117  | 154032   | 5.00 | ug/L  | 0.00     |
| 61) 1,4-Dichlorobenzene-d4 | 11.27 | 152  | 71564    | 5.00 | ug/L  | 0.00     |

## System Monitoring Compounds

|                                |        |       |          |          |      |         |
|--------------------------------|--------|-------|----------|----------|------|---------|
| 4) Vinyl Chloride-d3           | 1.32   | 65    | 44593    | 4.61     | ug/L | 0.00    |
| Spiked Amount                  | 5.000  | Range | 40 - 130 | Recovery | =    | 92.20%  |
| 7) Chloroethane-d5             | 1.58   | 69    | 38488    | 5.48     | ug/L | 0.00    |
| Spiked Amount                  | 5.000  | Range | 65 - 130 | Recovery | =    | 109.60% |
| 11) 1,1-Dichloroethene-d2      | 2.13   | 63    | 68122    | 3.70     | ug/L | 0.00    |
| Spiked Amount                  | 5.000  | Range | 60 - 125 | Recovery | =    | 74.00%  |
| 20) 2-Butanone-d5              | 3.93   | 46    | 120697   | 48.99    | ug/L | -0.02   |
| Spiked Amount                  | 50.000 | Range | 40 - 130 | Recovery | =    | 97.98%  |
| 24) Chloroform-d               | 4.38   | 84    | 105311   | 5.09     | ug/L | 0.00    |
| Spiked Amount                  | 5.000  | Range | 70 - 125 | Recovery | =    | 101.80% |
| 26) 1,2-Dichloroethane-d4      | 5.06   | 65    | 56899    | 5.19     | ug/L | 0.00    |
| Spiked Amount                  | 5.000  | Range | 70 - 130 | Recovery | =    | 103.80% |
| 32) Benzene-d6                 | 5.08   | 84    | 193620   | 4.85     | ug/L | 0.00    |
| Spiked Amount                  | 5.000  | Range | 70 - 125 | Recovery | =    | 97.00%  |
| 36) 1,2-Dichloropropane-d6     | 6.09   | 67    | 56586    | 4.73     | ug/L | 0.00    |
| Spiked Amount                  | 5.000  | Range | 60 - 140 | Recovery | =    | 94.60%  |
| 41) Toluene-d8                 | 7.34   | 98    | 168084   | 4.48     | ug/L | 0.00    |
| Spiked Amount                  | 5.000  | Range | 70 - 130 | Recovery | =    | 89.60%  |
| 45) trans-1,3-Dichloropropene- | 7.64   | 79    | 22718    | 4.56     | ug/L | 0.00    |
| Spiked Amount                  | 5.000  | Range | 55 - 130 | Recovery | =    | 91.20%  |
| 48) 2-Hexanone-d5              | 8.11   | 63    | 78201    | 41.19    | ug/L | 0.00    |
| Spiked Amount                  | 50.000 | Range | 45 - 130 | Recovery | =    | 82.38%  |
| 59) 1,1,2,2-Tetrachloroethane- | 10.24  | 84    | 38846    | 4.89     | ug/L | 0.00    |
| Spiked Amount                  | 5.000  | Range | 65 - 120 | Recovery | =    | 97.80%  |
| 65) 1,2-Dichlorobenzene-d4     | 11.65  | 152   | 69493    | 5.25     | ug/L | 0.00    |
| Spiked Amount                  | 5.000  | Range | 80 - 120 | Recovery | =    | 105.00% |

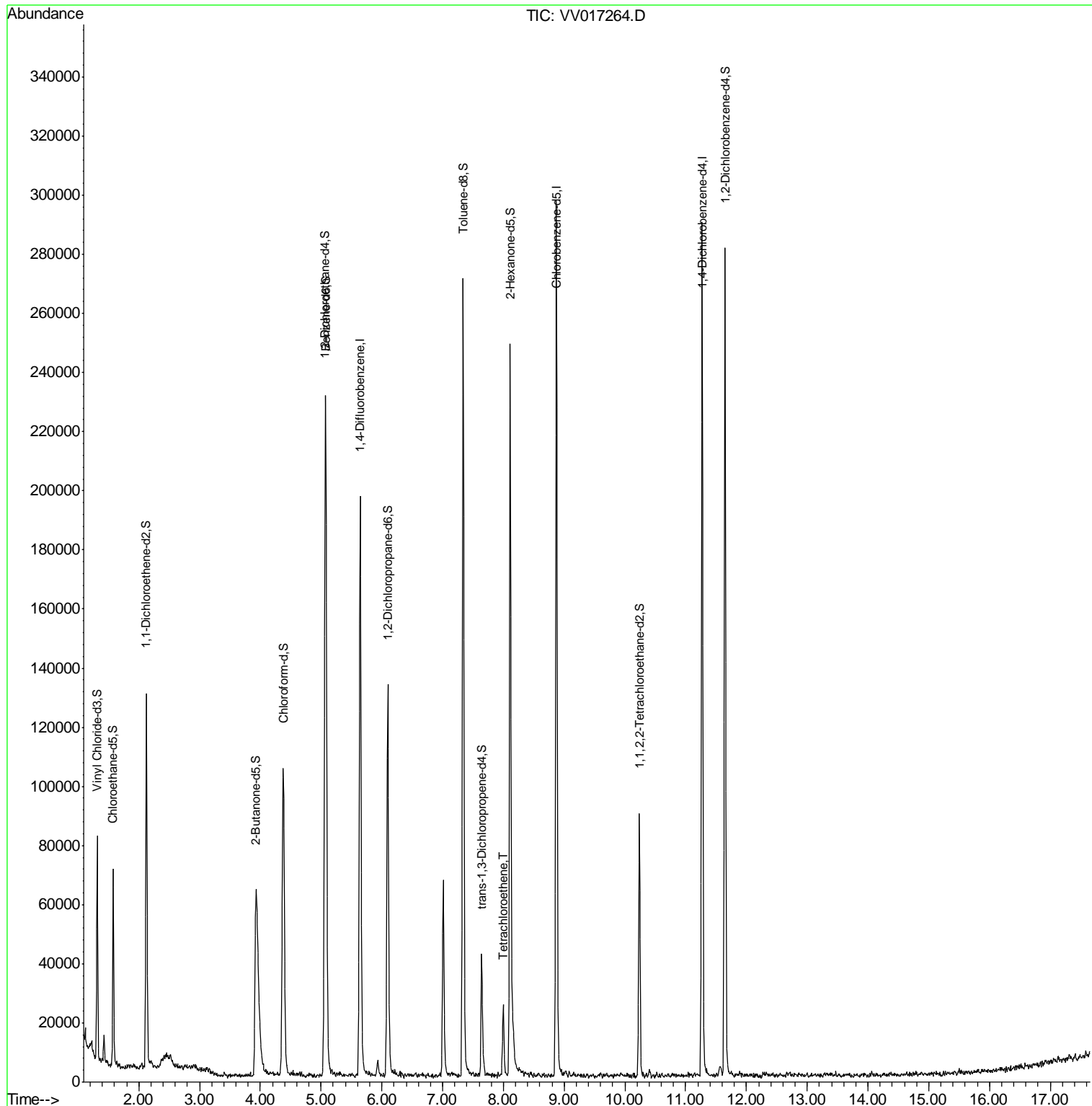
| Target Compounds      |      |     |      |            | Ovalue |
|-----------------------|------|-----|------|------------|--------|
| 49) Tetrachloroethene | 8.00 | 164 | 5679 | 0.597 ug/L | 97     |

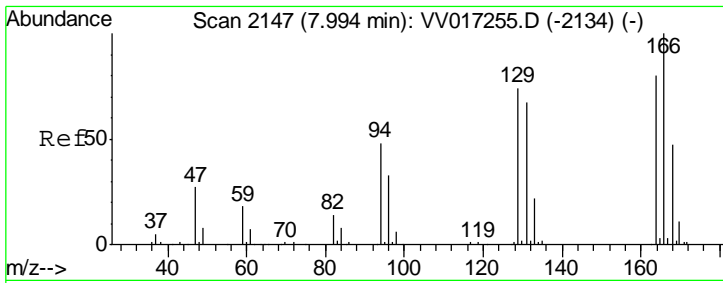
(#) = qualifier out of range (m) = manual integration (+) = signals summed

Data Path : Z:\VOASRV\HPCHEM1\MSVOA V\DATA\VV063020\  
 Data File : VV017264.D  
 Acq On : 30 Jun 2020 16:46  
 Operator : SY/MD  
 Sample : L3168-02  
 Misc : 25.0mL/MSVOA V/WATER  
 ALS Vial : 11 Sample Multiplier: 1

Instrument :  
 MSVOA\_V  
 ClientSampled :  
 C0AH7

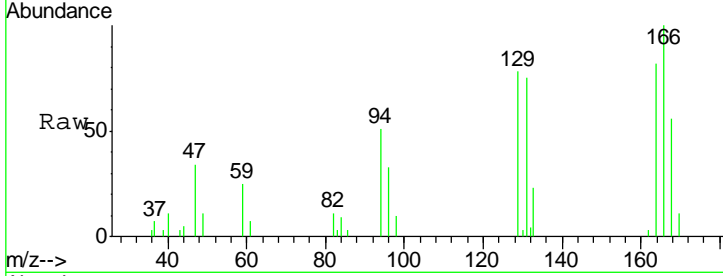
Quant Time: Jul 01 06:42:38 2020  
 Quant Method : Z:\VOASRV\HPCHEM1\MSVOA\_V\METHOD\SOMVTR061720WMA.M  
 Quant Title : TRACE VOA SOM01.0  
 QLast Update : Wed Jul 01 06:00:36 2020  
 Response via : Initial Calibration





#49  
 Tetrachloroethene  
 Concen: 0.597 ug/L  
 RT: 8.00 min Scan# 2148  
 Delta R.T. 0.00 min  
 Lab File: VV017264.D  
 Acq: 30 Jun 2020 16:46

**Instrument :**  
 MSVOA\_V  
**ClientSampled :**  
 C0AH7



Tot Ion:164 Resp: 5679

| Ion | Ratio | Lower | Upper |
|-----|-------|-------|-------|
| 164 | 100   |       |       |
| 129 | 96.2  | 65.2  | 121.0 |
| 131 | 91.5  | 64.1  | 119.1 |
| 166 | 122.6 | 90.2  | 167.4 |

