

Data Path : Z:\voasrv\HPCHEM1\MSVOA_V\Data\VW070122\
 Data File : VW026619.D
 Acq On : 01 Jul 2022 10:43
 Operator : SY/MD
 Sample : N3555-02
 Misc : 25.0mL/MSVOA_V/WATER
 ALS Vial : 4 Sample Multiplier: 1

Instrument :
 MSVOA_V
 ClientSampleId :
 C0AA9

Quant Time: Jul 04 02:02:33 2022
 Quant Method : Z:\voasrv\HPCHEM1\MSVOA_V\Method\SFAMVTR062322WMA.M
 Quant Title : TRACE VOA SFAM1.0
 QLast Update : Mon Jul 04 02:01:03 2022
 Response via : Initial Calibration

Compound	R.T.	QIon	Response	Conc	Units	Dev(Min)

Internal Standards						
1) 1,4-Difluorobenzene	5.619	114	198507	5.000	ug/L	0.00
28) Chlorobenzene-d5	8.850	117	194193	5.000	ug/L	0.00
58) 1,4-Dichlorobenzene-d4	11.249	152	78508	5.000	ug/L	0.00
System Monitoring Compounds						
4) Vinyl Chloride-d3	1.317	65	65440	4.099	ug/L	0.00
Spiked Amount	5.000	Range 40 - 130	Recovery	=	82.000%	
7) Chloroethane-d5	1.577	69	57256	4.464	ug/L	0.00
Spiked Amount	5.000	Range 65 - 130	Recovery	=	89.200%	
11) 1,1-Dichloroethene-d2	2.117	63	91053	3.210	ug/L	0.00
Spiked Amount	5.000	Range 60 - 125	Recovery	=	64.200%	
20) 2-Butanone-d5	3.924	46	73497	46.307	ug/L	0.00
Spiked Amount	50.000	Range 40 - 130	Recovery	=	92.620%	
24) Chloroform-d	4.355	84	126714	4.856	ug/L	0.00
Spiked Amount	5.000	Range 70 - 125	Recovery	=	97.200%	
26) 1,2-Dichloroethane-d4	5.040	65	52647	5.238	ug/L	0.00
Spiked Amount	5.000	Range 70 - 130	Recovery	=	104.800%	
32) Benzene-d6	5.056	84	229956	4.123	ug/L	0.00
Spiked Amount	5.000	Range 70 - 125	Recovery	=	82.400%	
36) 1,2-Dichloropropane-d6	6.072	67	72992	4.759	ug/L	0.00
Spiked Amount	5.000	Range 60 - 140	Recovery	=	95.200%	
41) Toluene-d8	7.316	98	182061	3.630	ug/L	0.00
Spiked Amount	5.000	Range 70 - 130	Recovery	=	72.600%	
43) trans-1,3-Dichloroprop...	7.625	79	18318	4.620	ug/L	0.00
Spiked Amount	5.000	Range 55 - 130	Recovery	=	92.400%	
46) 2-Hexanone-d5	8.091	63	69407	45.960	ug/L	0.00
Spiked Amount	50.000	Range 45 - 130	Recovery	=	91.920%	
56) 1,1,2,2-Tetrachloroeth...	10.217	84	49810	4.964	ug/L	0.00
Spiked Amount	5.000	Range 65 - 120	Recovery	=	99.200%	
66) 1,2-Dichlorobenzene-d4	11.622	152	63608	4.896	ug/L	0.00
Spiked Amount	5.000	Range 80 - 120	Recovery	=	98.000%	

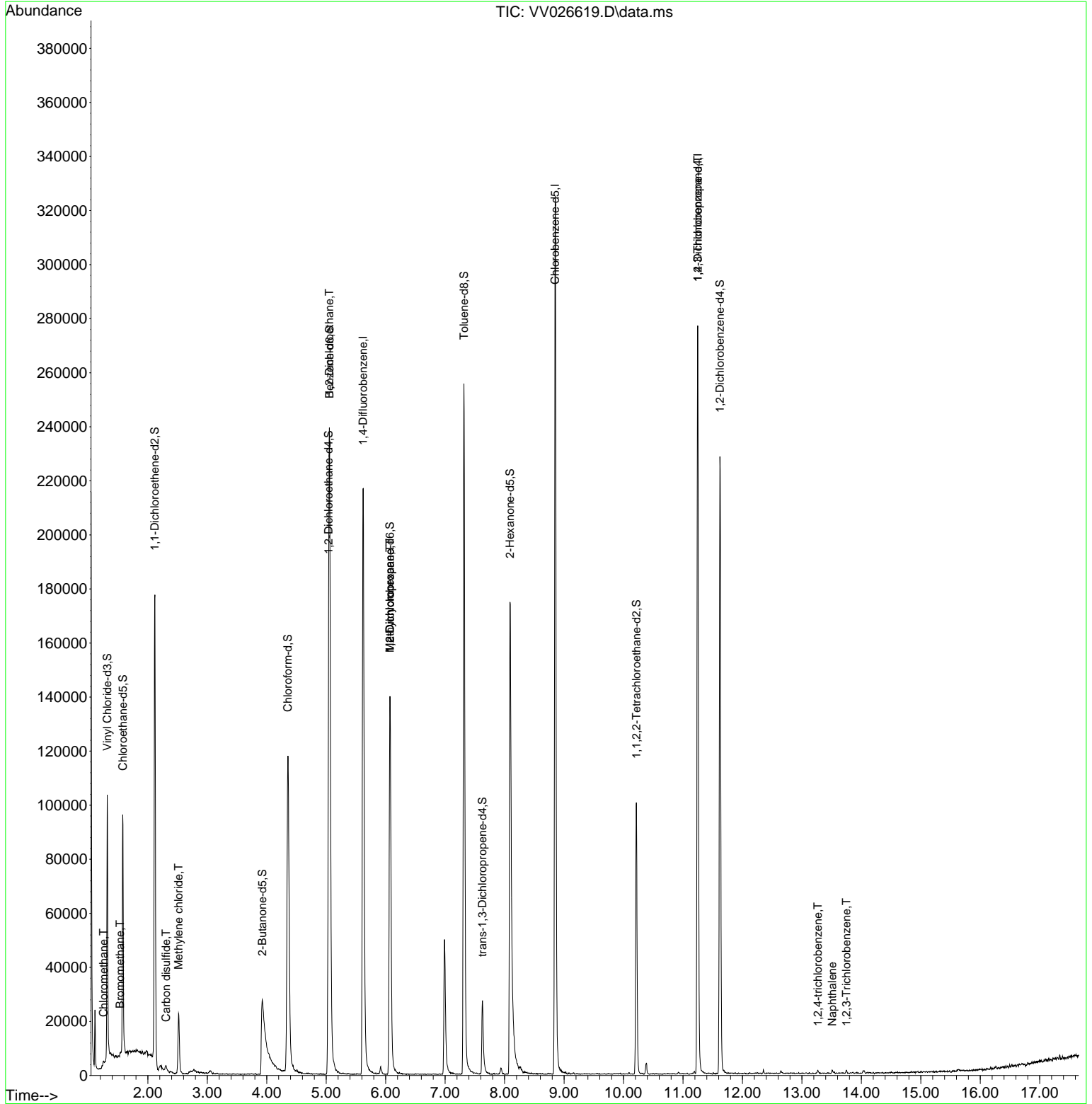
Target Compounds						Qvalue
3) Chloromethane	1.252	50	1078	0.065	ug/L	87
6) Bromomethane	1.532	94	922	0.097	ug/L	94
14) Carbon disulfide	2.304	76	2397	0.068	ug/L #	83
16) Methylene chloride	2.516	84	9862	0.693	ug/L	98
27) 1,2-Dichloroethane	5.050	62	1062	0.091	ug/L #	72
35) Methylcyclohexane	6.072	83	17977	0.815	ug/L #	21
37) 1,2-Dichloropropane	6.072	63	7926	0.580	ug/L #	84
61) 1,2,3-Trichloropropane	11.249	75	8708	1.713	ug/L #	65
70) 1,2,4-trichlorobenzene	13.268	180	639	0.053	ug/L #	80
71) Naphthalene	13.512	128	1407	0.090	ug/L #	83
72) 1,2,3-Trichlorobenzene	13.747	180	593	0.061	ug/L #	77

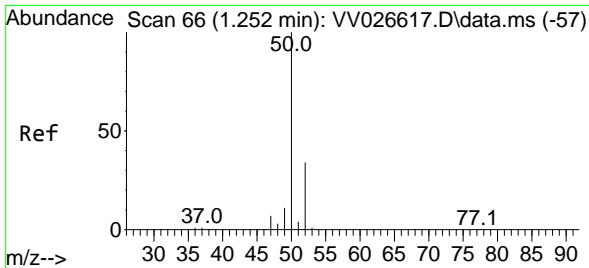
(#) = qualifier out of range (m) = manual integration (+) = signals summed

Data Path : Z:\voasrv\HPCHEM1\MSVOA_V\Data\VV070122\
 Data File : VV026619.D
 Acq On : 01 Jul 2022 10:43
 Operator : SY/MD
 Sample : N3555-02
 Misc : 25.0mL/MSVOA_V/WATER
 ALS Vial : 4 Sample Multiplier: 1

Instrument :
 MSVOA_V
ClientSampleId :
 C0AA9

Quant Time: Jul 04 02:02:33 2022
 Quant Method : Z:\voasrv\HPCHEM1\MSVOA_V\Method\SFAMVTR062322WMA.M
 Quant Title : TRACE VOA SFAM1.0
 QLast Update : Mon Jul 04 02:01:03 2022
 Response via : Initial Calibration

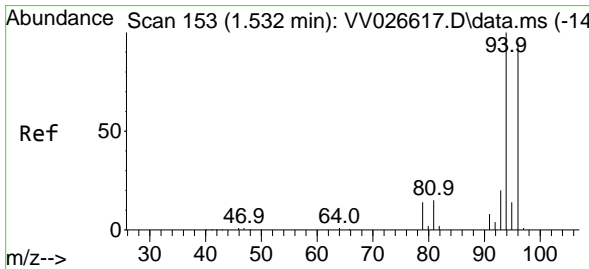
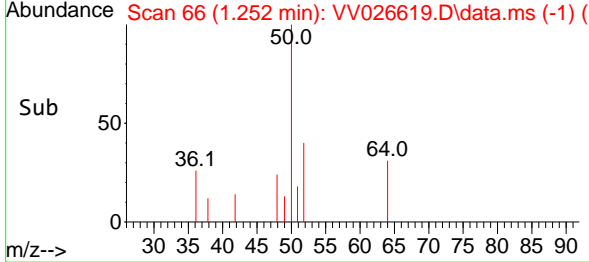
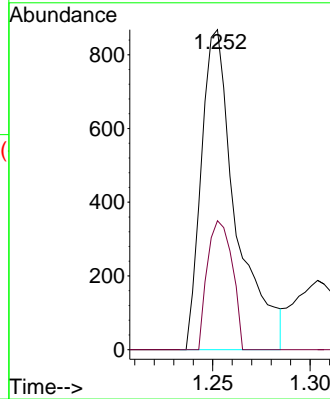
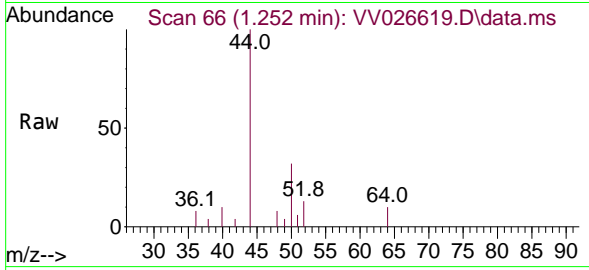




#3
 Chloromethane
 Concen: 0.065 ug/L
 RT: 1.252 min Scan# 60
 Delta R.T. 0.000 min
 Lab File: VV026619.D
 Acq: 01 Jul 2022 10:43

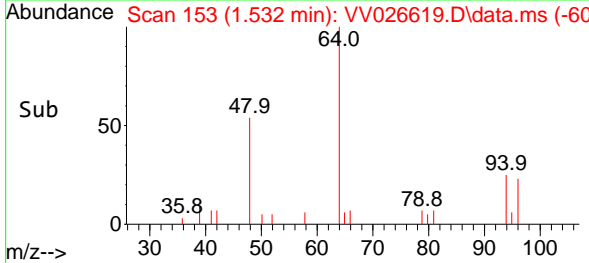
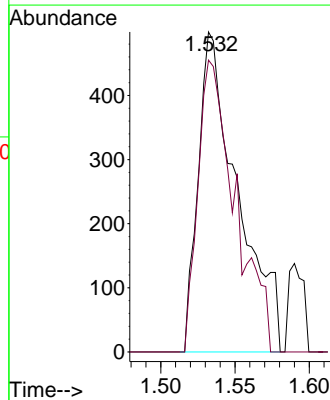
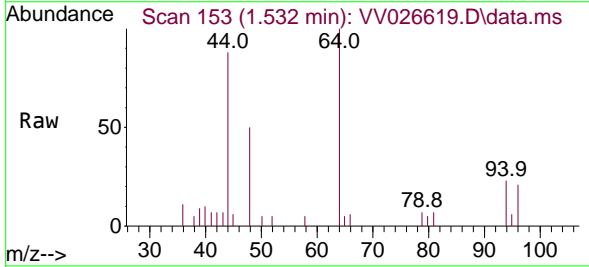
Instrument :
 MSVOA_V
 ClientSampleId :
 C0AA9

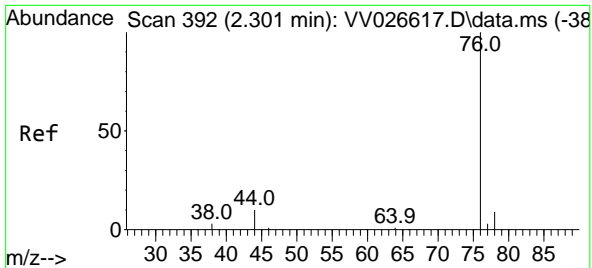
Tgt Ion: 50 Resp: 1078
 Ion Ratio Lower Upper
 50 100
 52 40.3 23.0 42.6



#6
 Bromomethane
 Concen: 0.097 ug/L
 RT: 1.532 min Scan# 153
 Delta R.T. 0.000 min
 Lab File: VV026619.D
 Acq: 01 Jul 2022 10:43

Tgt Ion: 94 Resp: 922
 Ion Ratio Lower Upper
 94 100
 96 91.2 68.0 126.2

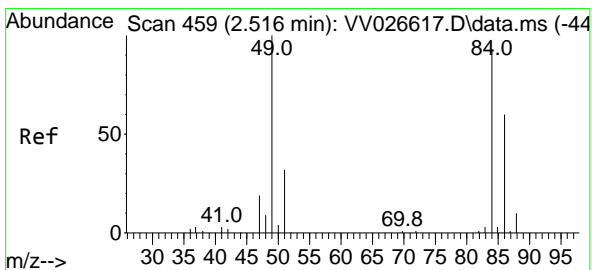
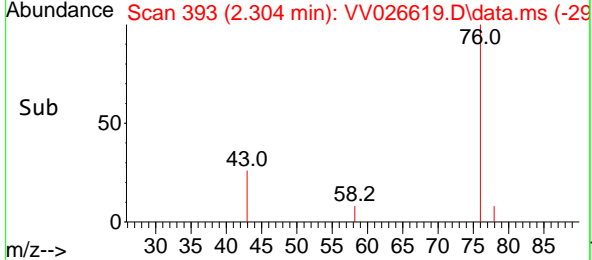
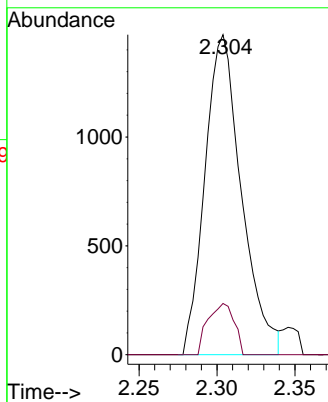
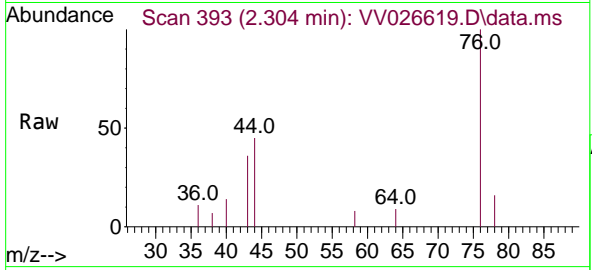




#14
 Carbon disulfide
 Concen: 0.068 ug/L
 RT: 2.304 min Scan# 392
 Delta R.T. 0.003 min
 Lab File: VV026619.D
 Acq: 01 Jul 2022 10:43

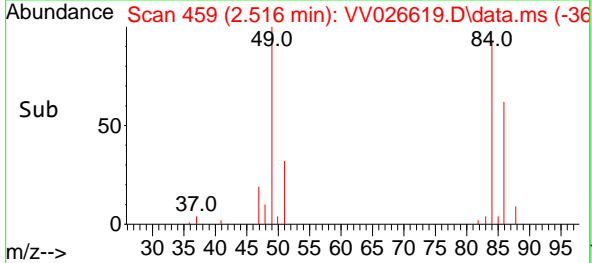
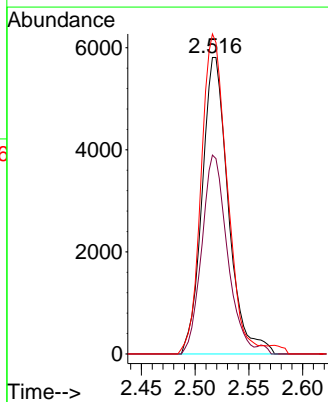
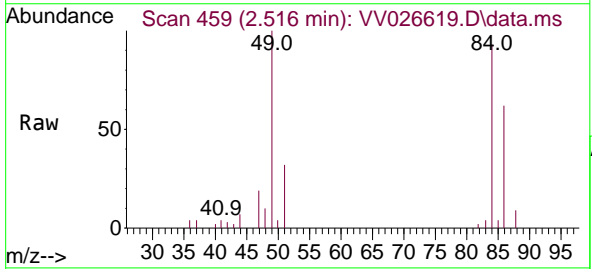
Instrument : MSVOA_V
 ClientSampleId : C0AA9

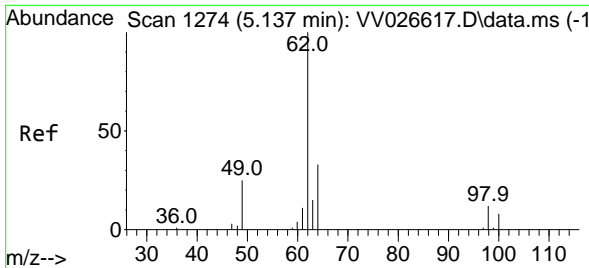
Tgt Ion: 76 Resp: 2397
 Ion Ratio Lower Upper
 76 100
 78 16.0 7.8 11.6#



#16
 Methylene chloride
 Concen: 0.693 ug/L
 RT: 2.516 min Scan# 459
 Delta R.T. 0.000 min
 Lab File: VV026619.D
 Acq: 01 Jul 2022 10:43

Tgt Ion: 84 Resp: 9862
 Ion Ratio Lower Upper
 84 100
 86 67.1 46.0 85.4
 49 107.9 77.7 144.3

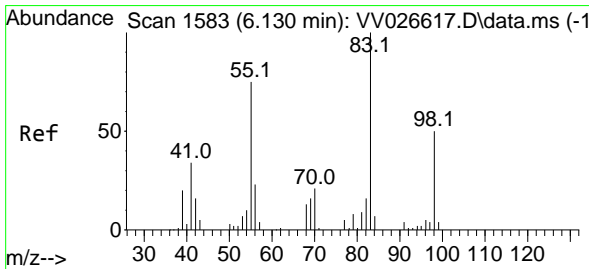
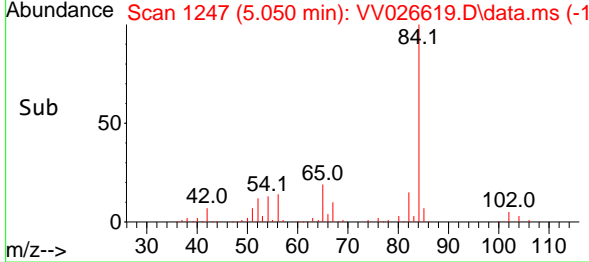
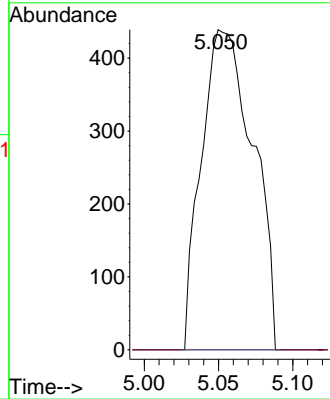
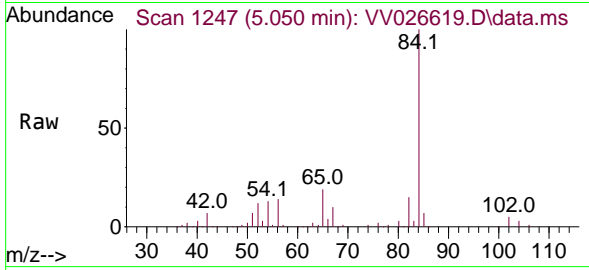




#27
 1,2-Dichloroethane
 Concen: 0.091 ug/L
 RT: 5.050 min Scan# 11
 Delta R.T. -0.087 min
 Lab File: VV026619.D
 Acq: 01 Jul 2022 10:43

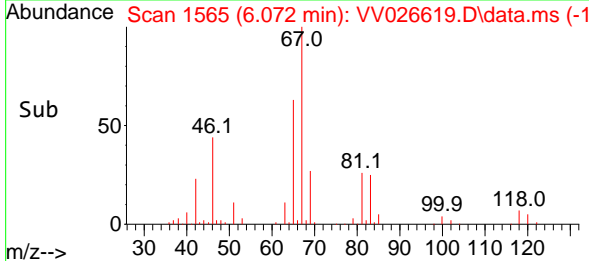
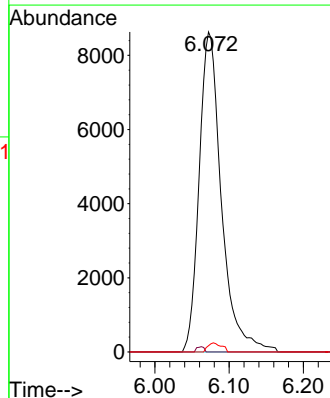
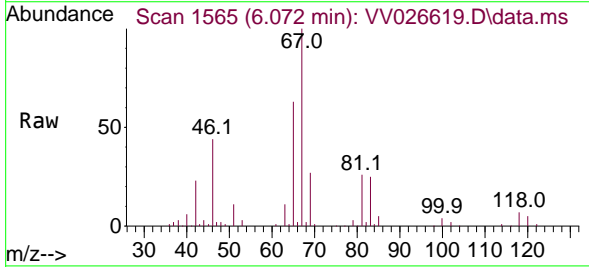
Instrument : MSVOA_V
 ClientSampleId : C0AA9

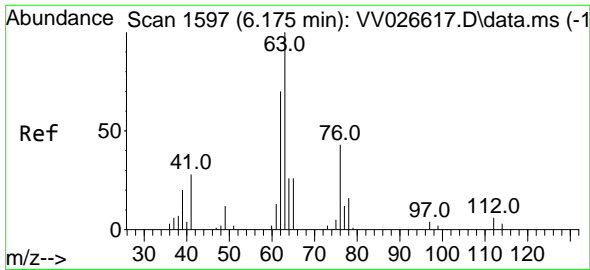
Tgt Ion: 62 Resp: 1062
 Ion Ratio Lower Upper
 62 100
 98 0.0 8.4 12.6#



#35
 Methylcyclohexane
 Concen: 0.815 ug/L
 RT: 6.072 min Scan# 1565
 Delta R.T. -0.058 min
 Lab File: VV026619.D
 Acq: 01 Jul 2022 10:43

Tgt Ion: 83 Resp: 17977
 Ion Ratio Lower Upper
 83 100
 55 0.5 57.0 85.4#
 98 1.7 39.8 59.8#

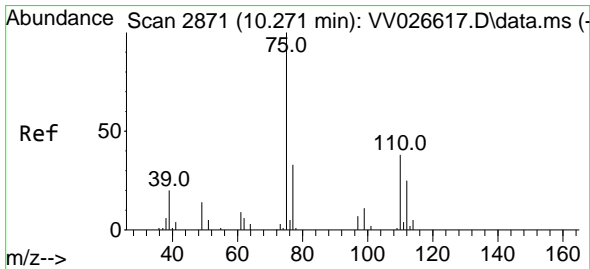
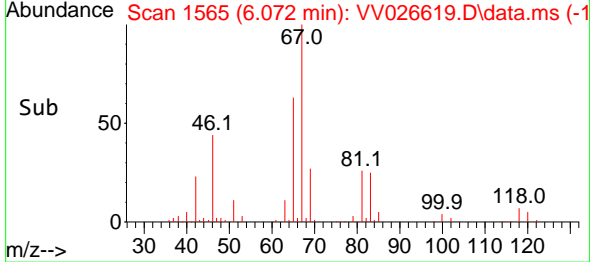
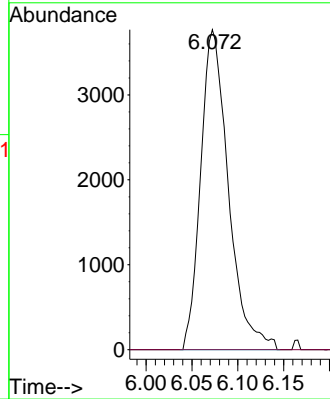
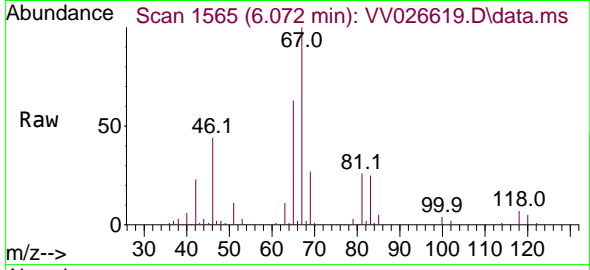




#37
 1,2-Dichloropropane
 Concen: 0.580 ug/L
 RT: 6.072 min Scan# 111
 Delta R.T. -0.103 min
 Lab File: VV026619.D
 Acq: 01 Jul 2022 10:43

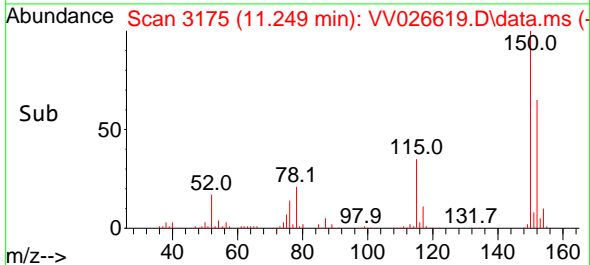
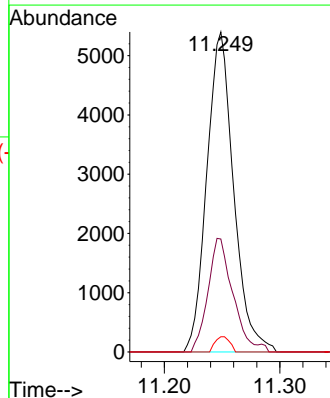
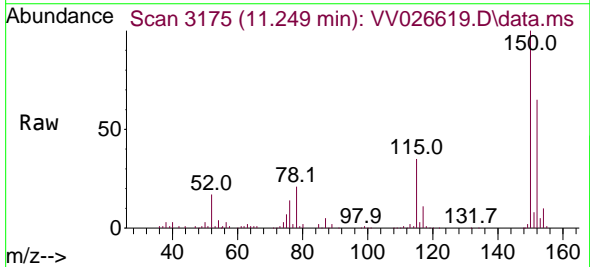
Instrument :
 MSVOA_V
 ClientSampleId :
 C0AA9

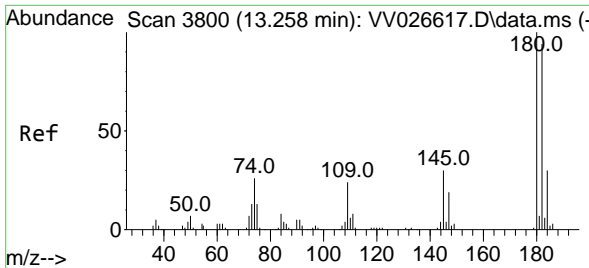
Tgt Ion: 63 Resp: 7926
 Ion Ratio Lower Upper
 63 100
 112 0.0 4.2 6.4#



#61
 1,2,3-Trichloropropane
 Concen: 1.713 ug/L
 RT: 11.249 min Scan# 3175
 Delta R.T. 0.977 min
 Lab File: VV026619.D
 Acq: 01 Jul 2022 10:43

Tgt Ion: 75 Resp: 8708
 Ion Ratio Lower Upper
 75 100
 77 33.2 25.8 38.6
 110 2.6 32.5 48.7#

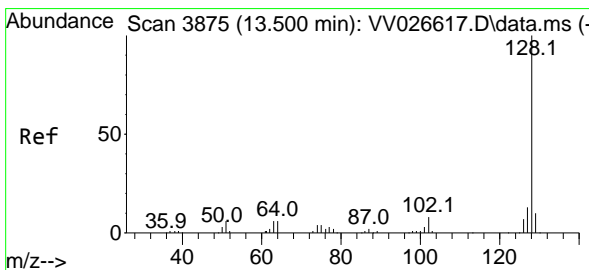
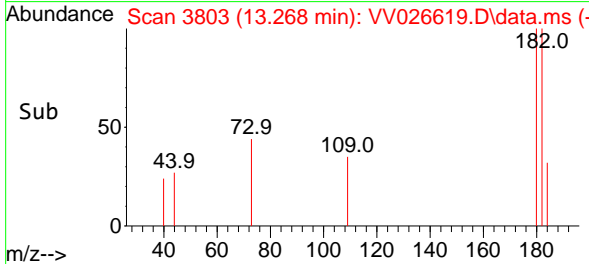
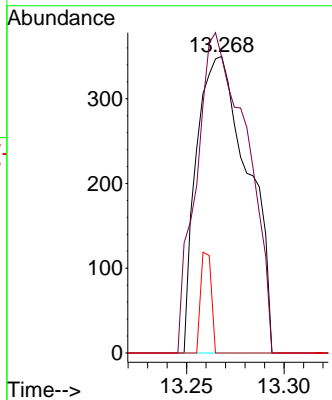
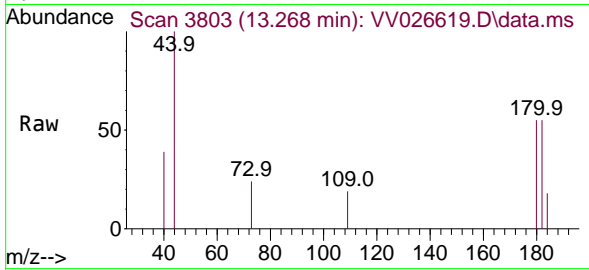




#70
 1,2,4-trichlorobenzene
 Concen: 0.053 ug/L
 RT: 13.268 min Scan# 3803
 Delta R.T. 0.010 min
 Lab File: VV026619.D
 Acq: 01 Jul 2022 10:43

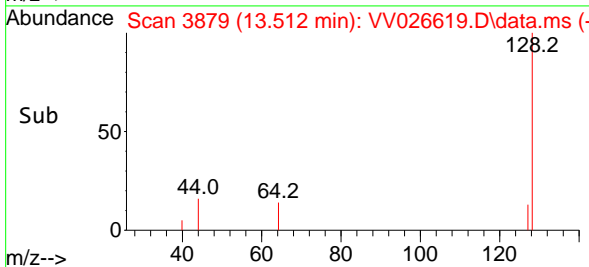
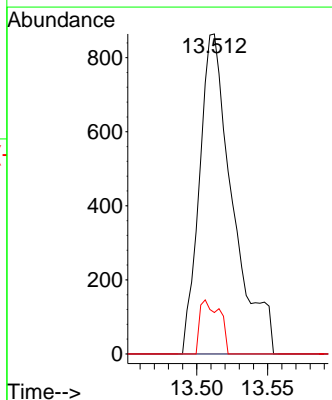
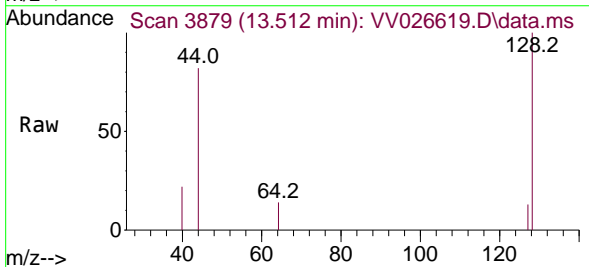
Instrument :
 MSVOA_V
 ClientSampleId :
 C0AA9

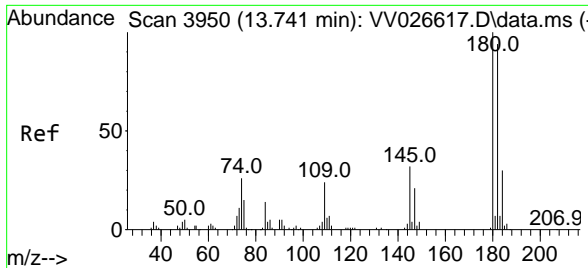
Tgt Ion:180 Resp: 639
 Ion Ratio Lower Upper
 180 100
 182 106.4 75.2 112.8
 145 7.0 24.4 36.6#



#71
 Naphthalene
 Concen: 0.090 ug/L
 RT: 13.512 min Scan# 3879
 Delta R.T. 0.013 min
 Lab File: VV026619.D
 Acq: 01 Jul 2022 10:43

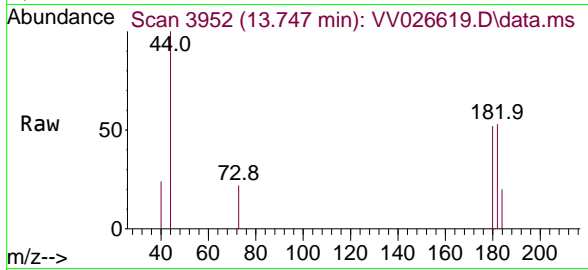
Tgt Ion:128 Resp: 1407
 Ion Ratio Lower Upper
 128 100
 129 0.0 8.6 12.8#
 127 10.1 10.2 15.4#





#72
 1,2,3-Trichlorobenzene
 Concen: 0.061 ug/L
 RT: 13.747 min Scan# 3952
 Delta R.T. 0.006 min
 Lab File: VV026619.D
 Acq: 01 Jul 2022 10:43

Instrument :
 MSVOA_V
 ClientSampleId :
 C0AA9



Tgt Ion:180 Resp: 593

Ion	Ratio	Lower	Upper
180	100		
182	79.8	76.8	115.2
145	9.6	25.8	38.6#

