

Data Path : Z:\VOASRV\HPCHEM1\MSVOA V\DATA\VV070220\
 Data File : VV017328.D
 Acq On : 03 Jul 2020 00:13
 Operator : SY/MD
 Sample : L3104-17
 Misc : 25.0mL/MSVOA V/WATER
 ALS Vial : 32 Sample Multiplier: 1

Instrument :
 MSVOA_V
 ClientSampled :

Quant Time: Jul 03 06:20:38 2020
 Quant Method : Z:\VOASRV\HPCHEM1\MSVOA_V\METHOD\SOMVTR061720WMA.M
 Quant Title : TRACE VOA SOM01.0
 QLast Update : Fri Jul 03 06:15:26 2020
 Response via : Initial Calibration

Internal Standards	R.T.	QIon	Response	Conc	Units	Dev(Min)
1) 1,4-Difluorobenzene	5.64	114	163752	5.00	ug/L	0.00
28) Chlorobenzene-d5	8.87	117	161121	5.00	ug/L	0.00
61) 1,4-Dichlorobenzene-d4	11.27	152	76906	5.00	ug/L	0.00

System Monitoring Compounds

4) Vinyl Chloride-d3	1.32	65	40478	4.12	ug/L	0.00
Spiked Amount	5.000	Range	40 - 130	Recovery	=	82.40%
7) Chloroethane-d5	1.58	69	32761	4.58	ug/L	0.00
Spiked Amount	5.000	Range	65 - 130	Recovery	=	91.60%
11) 1,1-Dichloroethene-d2	2.12	63	66201	3.54	ug/L	0.00
Spiked Amount	5.000	Range	60 - 125	Recovery	=	70.80%
20) 2-Butanone-d5	3.95	46	93290	37.24	ug/L	0.02
Spiked Amount	50.000	Range	40 - 130	Recovery	=	74.48%
24) Chloroform-d	4.38	84	91987	4.38	ug/L	0.00
Spiked Amount	5.000	Range	70 - 125	Recovery	=	87.60%
26) 1,2-Dichloroethane-d4	5.06	65	52057	4.67	ug/L	0.00
Spiked Amount	5.000	Range	70 - 130	Recovery	=	93.40%
32) Benzene-d6	5.07	84	171425	4.10	ug/L	0.00
Spiked Amount	5.000	Range	70 - 125	Recovery	=	82.00%
36) 1,2-Dichloropropane-d6	6.10	67	47266	3.78	ug/L	0.00
Spiked Amount	5.000	Range	60 - 140	Recovery	=	75.60%
41) Toluene-d8	7.34	98	153327	3.91	ug/L	0.00
Spiked Amount	5.000	Range	70 - 130	Recovery	=	78.20%
45) trans-1,3-Dichloropropene-	7.65	79	19681	3.78	ug/L	0.00
Spiked Amount	5.000	Range	55 - 130	Recovery	=	75.60%
48) 2-Hexanone-d5	8.11	63	63514	31.98	ug/L	0.00
Spiked Amount	50.000	Range	45 - 130	Recovery	=	63.96%
59) 1,1,2,2-Tetrachloroethane-	10.24	84	33194	3.99	ug/L	0.00
Spiked Amount	5.000	Range	65 - 120	Recovery	=	79.80%
65) 1,2-Dichlorobenzene-d4	11.65	152	62362	4.39	ug/L	0.00
Spiked Amount	5.000	Range	80 - 120	Recovery	=	87.80%

Target Compounds

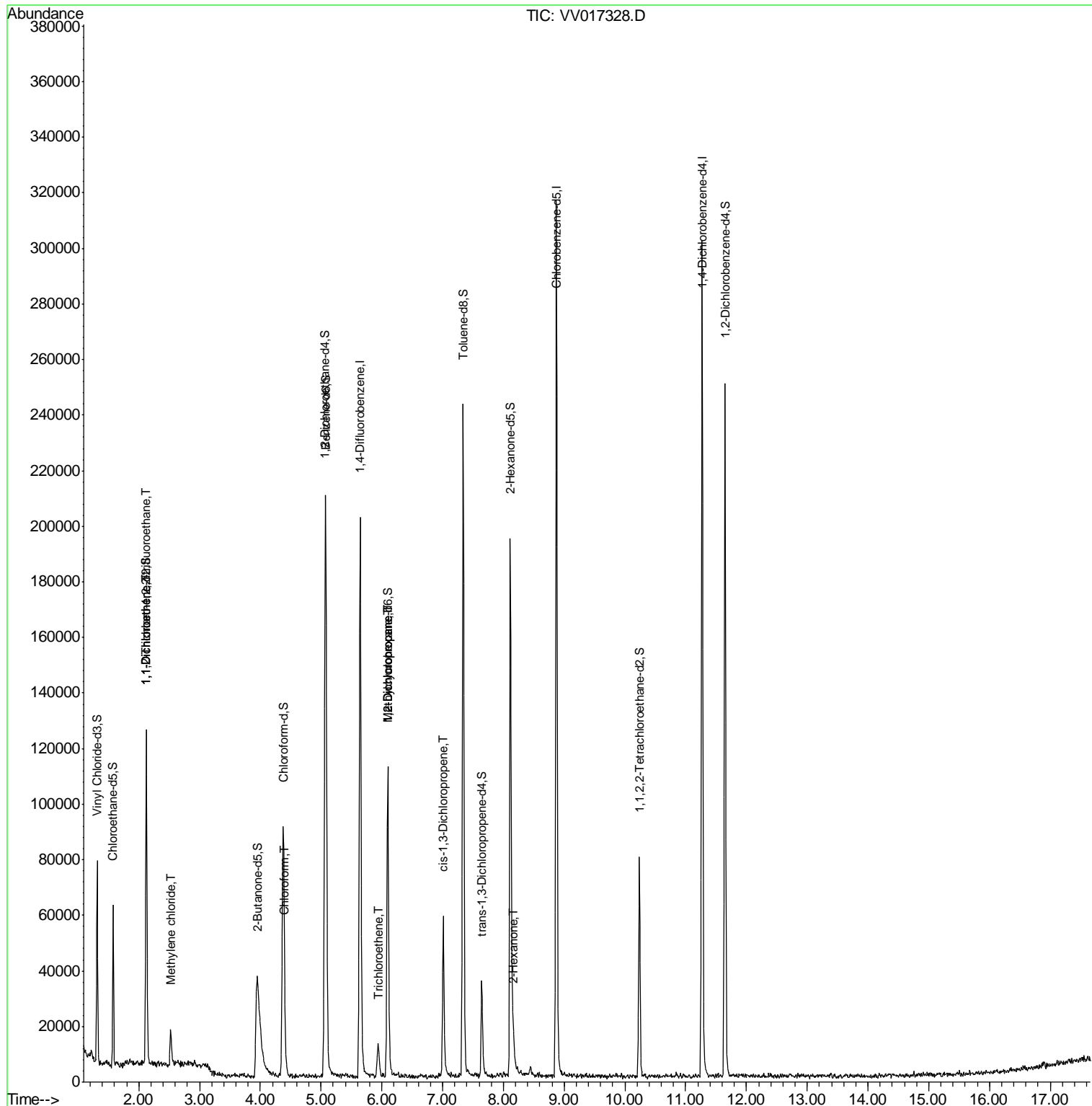
Target Compounds	R.T.	QIon	Response	Conc	Units	Ovalue
10) 1,1,2-Trichloro-1,2,2-trif	2.12	101	739	0.085	ug/L #	19
12) 1,1-Dichloroethene	2.13	96	653	0.083	ug/L #	1
16) Methylene chloride	2.52	84	5458	0.649	ug/L	86
25) Chloroform	4.41	83	2728	0.133	ug/L	96
34) Trichloroethene	5.95	95	3050	0.247	ug/L	92
35) Methylcyclohexane	6.10	83	13220	0.688	ug/L #	18
37) 1,2-Dichloropropane	6.09	63	6662	0.638	ug/L #	84
39) cis-1,3-Dichloropropene	7.01	75	1645	0.106	ug/L	93
50) 2-Hexanone	8.17	43	4954	1.154	ug/L #	92

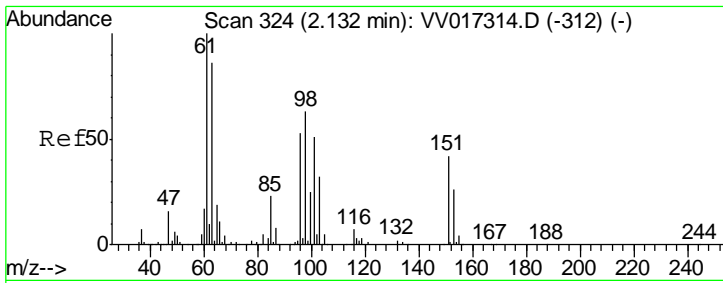
(#) = qualifier out of range (m) = manual integration (+) = signals summed

Data Path : Z:\VOASRV\HPCHEM1\MSVOA V\DATA\VV070220\
 Data File : VV017328.D
 Acq On : 03 Jul 2020 00:13
 Operator : SY/MD
 Sample : L3104-17
 Misc : 25.0mL/MSVOA V/WATER
 ALS Vial : 32 Sample Multiplier: 1

Instrument :
 MSVOA_V
 ClientSampled :

Quant Time: Jul 03 06:20:38 2020
 Quant Method : Z:\VOASRV\HPCHEM1\MSVOA_V\METHOD\SOMVTR061720WMA.M
 Quant Title : TRACE VOA SOM01.0
 QLast Update : Fri Jul 03 06:15:26 2020
 Response via : Initial Calibration

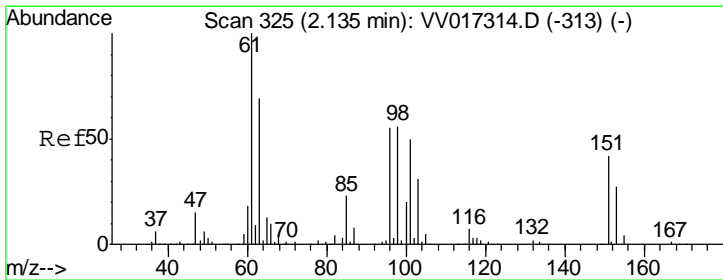
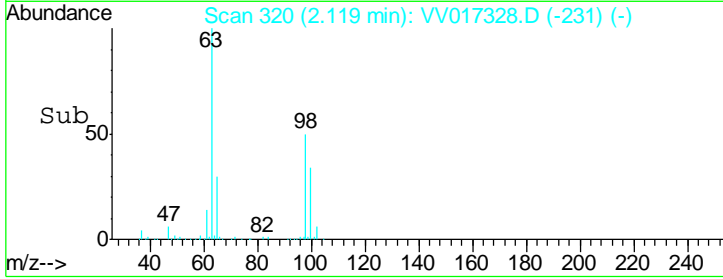
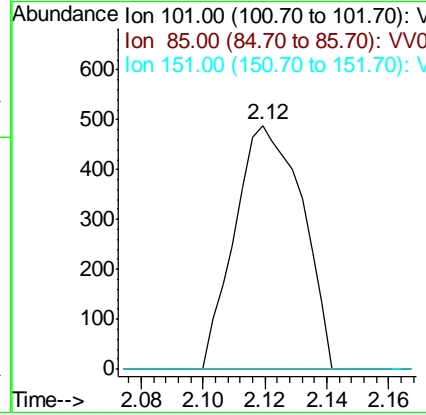
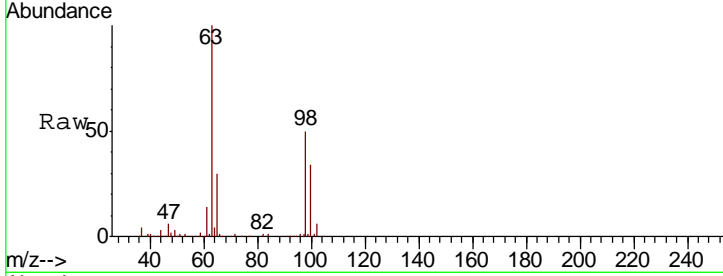




#10
 1,1,2-Trichloro-1,2,2-trifluoroethane
 Concen: 0.085 ug/L
 RT: 2.12 min Scan# 320
 Delta R.T. -0.01 min
 Lab File: VV017328.D
 Acq: 03 Jul 2020 00:13

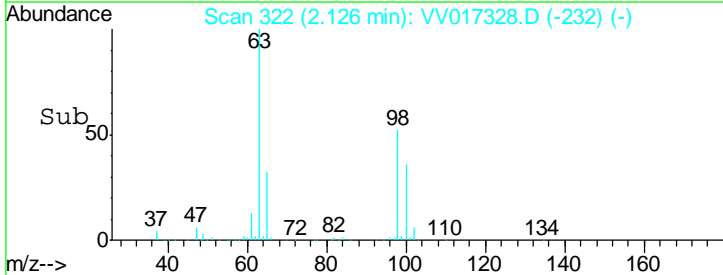
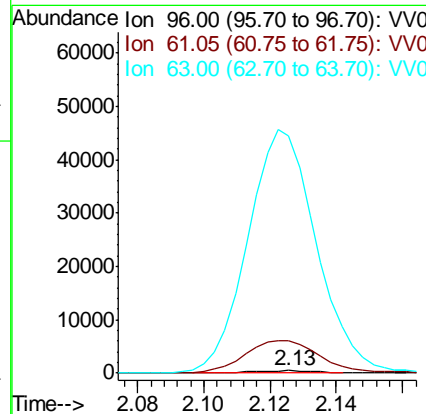
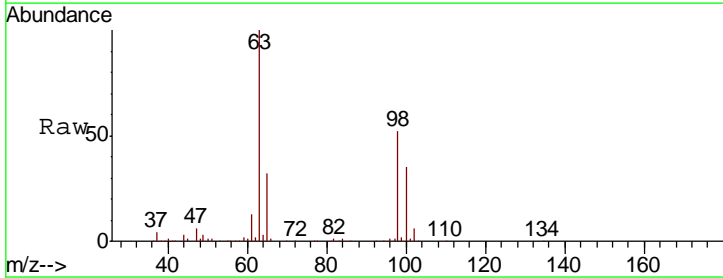
Instrument :
 MSVOA_V
 ClientSampled :

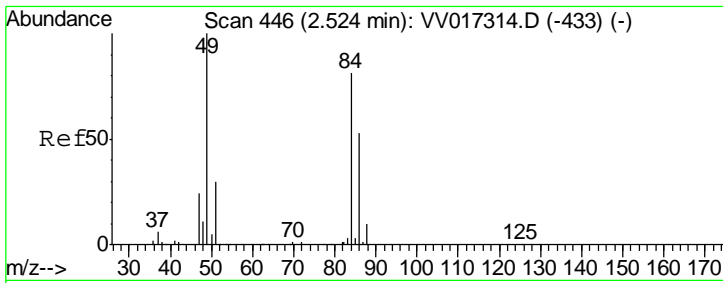
Tgt Ion	Ratio	Lower	Upper
101	100		
85	2.7	35.4	53.2#
151	0.0	63.9	95.9#



#12
 1,1-Dichloroethene
 Concen: 0.083 ug/L
 RT: 2.13 min Scan# 322
 Delta R.T. -0.01 min
 Lab File: VV017328.D
 Acq: 03 Jul 2020 00:13

Tgt Ion	Ratio	Lower	Upper
96	100		
61	1328.4	125.0	232.2#
63	9895.1	109.8	203.8#

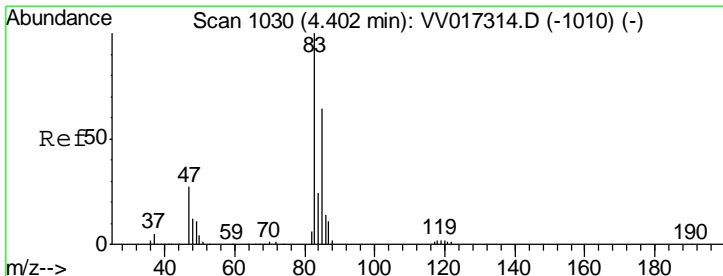
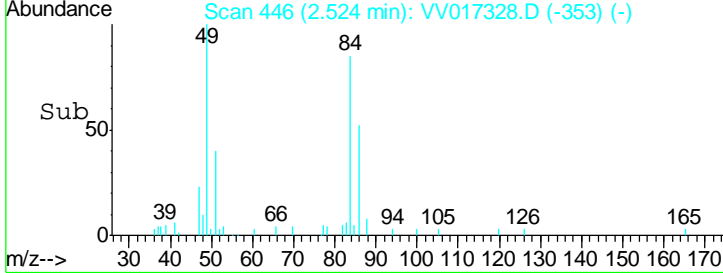
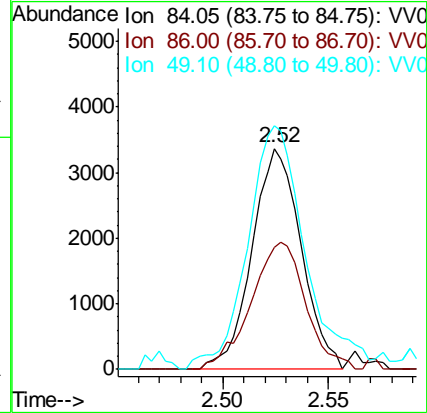
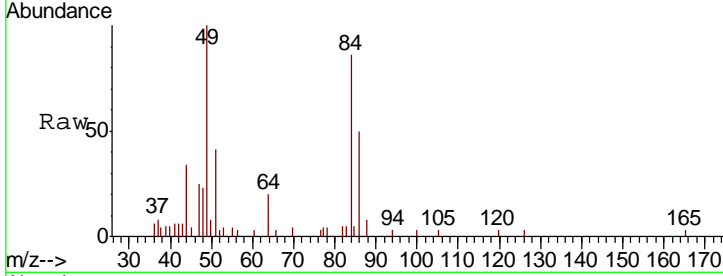




#16
 Methylene chloride
 Concen: 0.649 ug/L
 RT: 2.52 min Scan# 446
 Delta R.T. -0.00 min
 Lab File: VV017328.D
 Acq: 03 Jul 2020 00:13

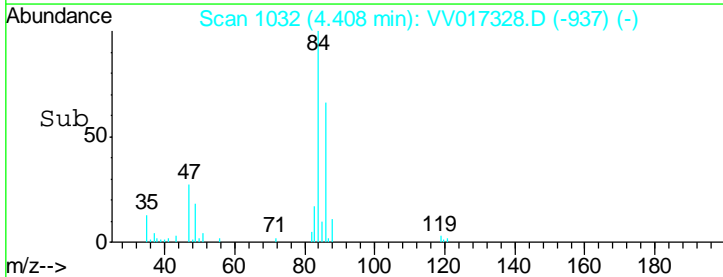
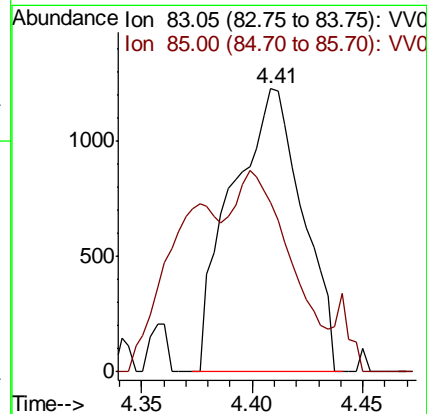
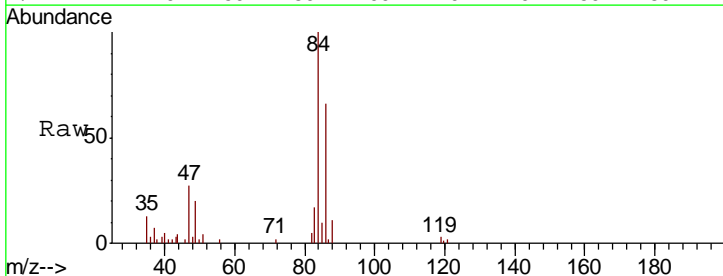
Instrument :
 MSVOA_V
 ClientSampled :

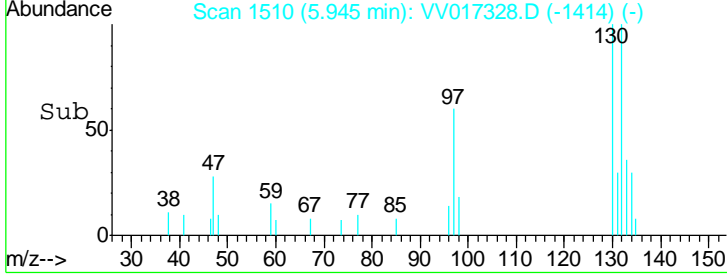
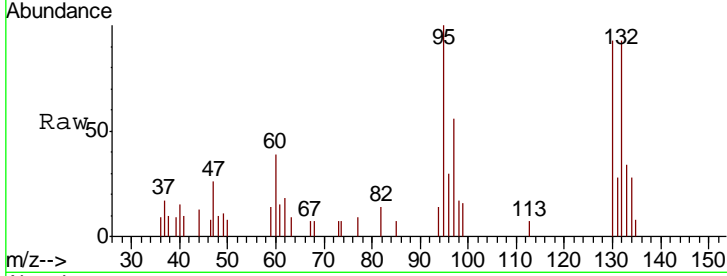
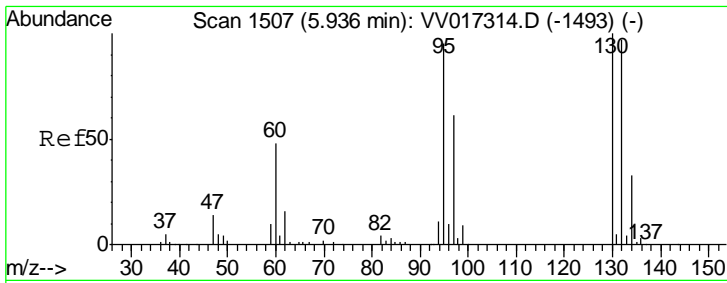
Tgt Ion	Resp	Lower	Upper
84	100		
86	55.4	45.8	85.0
49	110.3	89.6	166.4



#25
 Chloroform
 Concen: 0.133 ug/L
 RT: 4.41 min Scan# 1032
 Delta R.T. 0.01 min
 Lab File: VV017328.D
 Acq: 03 Jul 2020 00:13

Tgt Ion	Resp	Lower	Upper
83	100		
85	59.9	44.2	82.2

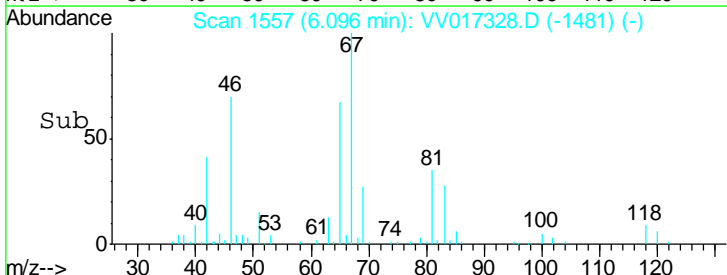
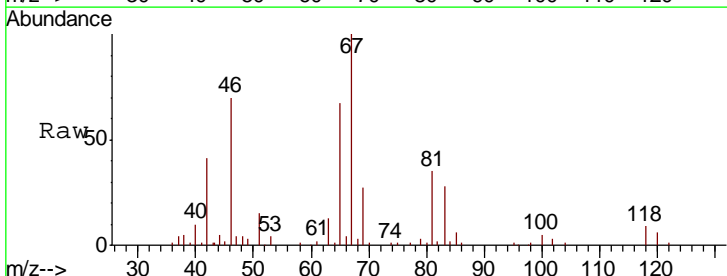
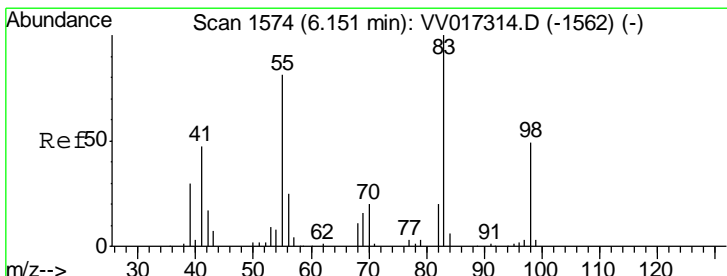
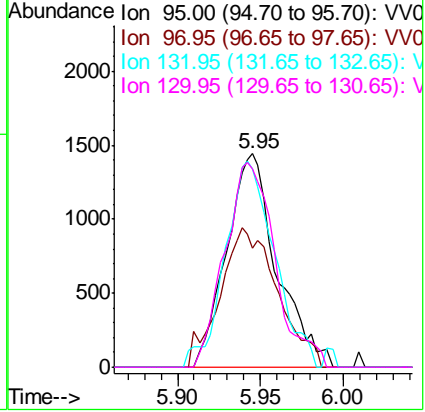




#34
 Trichloroethene
 Concen: 0.247 ug/L
 RT: 5.95 min Scan# 1510
 Delta R.T. 0.01 min
 Lab File: VV017328.D
 Acq: 03 Jul 2020 00:13

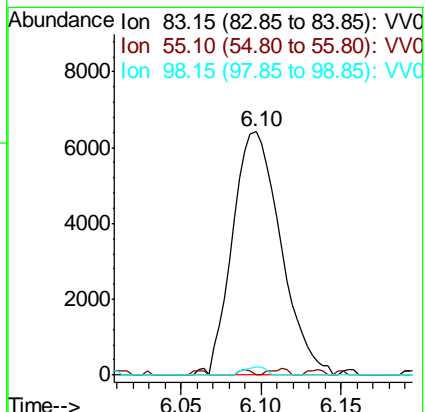
Tgt Ion	Resp	Lower	Upper
95	100		
97	55.7	45.3	84.1
132	92.9	68.8	127.8
130	93.0	70.2	130.4

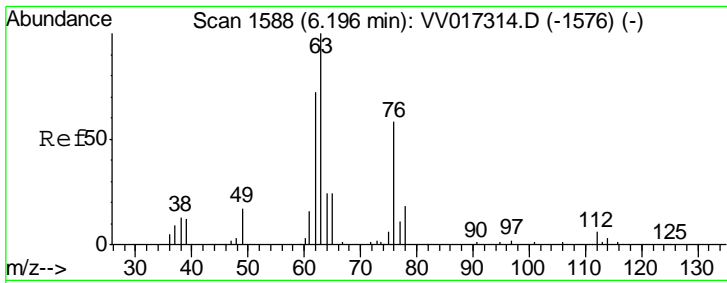
Instrument : MSVOA_V
 ClientSampled :



#35
 Methylcyclohexane
 Concen: 0.688 ug/L
 RT: 6.10 min Scan# 1557
 Delta R.T. -0.05 min
 Lab File: VV017328.D
 Acq: 03 Jul 2020 00:13

Tgt Ion	Resp	Lower	Upper
83	100		
55	0.5	63.6	95.4#
98	1.5	38.8	58.2#

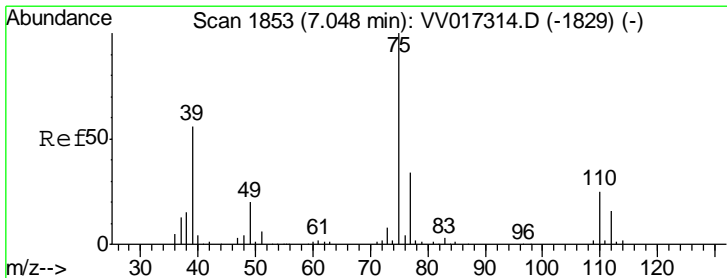
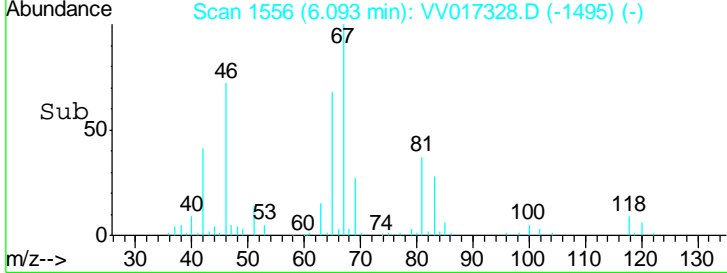
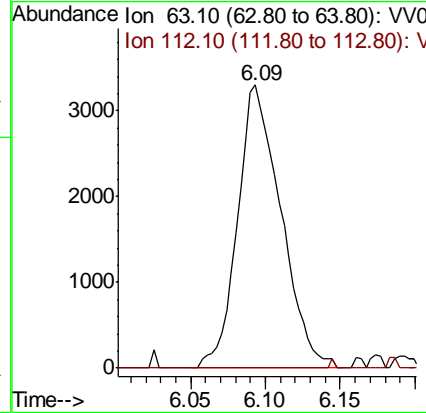
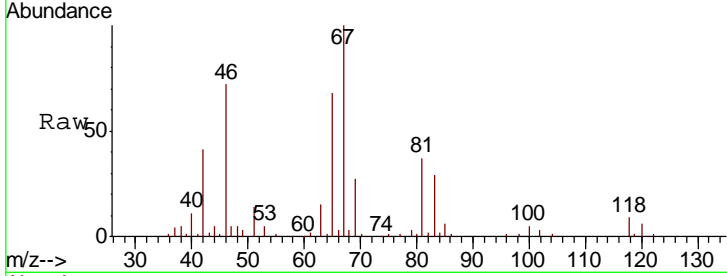




#37
 1,2-Dichloropropane
 Concen: 0.638 ug/L
 RT: 6.09 min Scan# 1556
 Delta R.T. -0.10 min
 Lab File: VV017328.D
 Acq: 03 Jul 2020 00:13

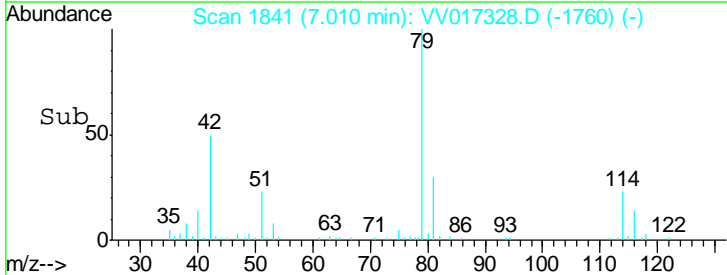
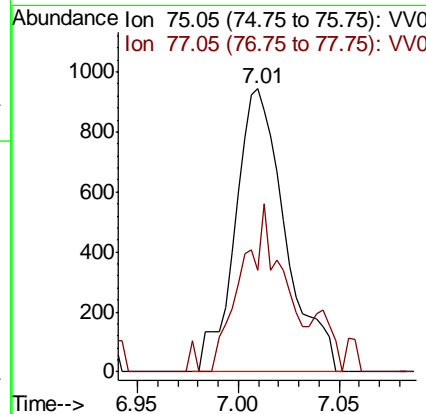
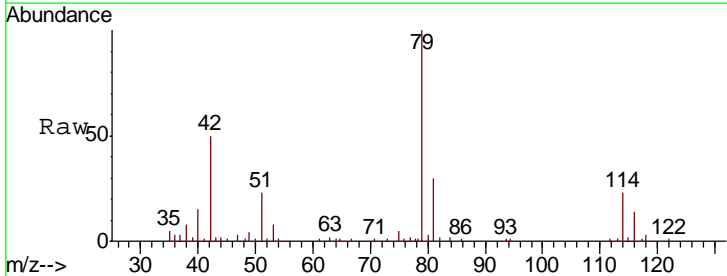
Instrument : MSVOA_V
 ClientSampled :

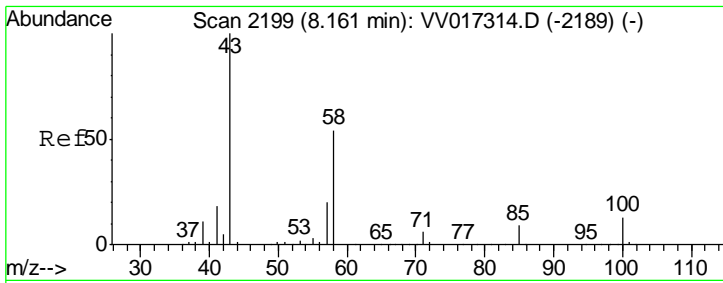
Tgt Ion	Resp	Lower	Upper
63	100		
112	0.3	4.4	6.6#



#39
 cis-1,3-Dichloropropene
 Concen: 0.106 ug/L
 RT: 7.01 min Scan# 1841
 Delta R.T. -0.04 min
 Lab File: VV017328.D
 Acq: 03 Jul 2020 00:13

Tgt Ion	Resp	Lower	Upper
75	100		
77	35.9	22.3	41.5





#50
 2-Hexanone
 Concen: 1.154 ug/L
 RT: 8.17 min Scan# 2202
 Delta R.T. 0.01 min
 Lab File: VV017328.D
 Acq: 03 Jul 2020 00:13

Instrument :
 MSVOA_V
 ClientSampled :

Tot Ion: 43 Resp: 4954

Ion	Ratio	Lower	Upper
43	100		
58	50.0	41.6	62.4
57	26.0	15.4	23.0#
100	6.0	10.1	15.1#

