

Data Path : Z:\voasrv\HPCHEM1\MSVOA\_V\DATA\VV070225\  
 Data File : VV038841.D  
 Acq On : 02 Jul 2025 15:34  
 Operator : SY/MD  
 Sample : VV0702WBL03  
 Misc : 5.0mL/MSVOA\_V/WATER  
 ALS Vial : 15 Sample Multiplier: 1

Instrument :  
 MSVOA\_V  
 ClientSampleId :  
 VV0702WBL03

Quant Time: Jul 03 03:01:28 2025  
 Quant Method : Z:\voasrv\HPCHEM1\MSVOA\_V\Method\82V070225W.M  
 Quant Title : SW846 8260  
 QLast Update : Thu Jul 03 02:44:44 2025  
 Response via : Initial Calibration

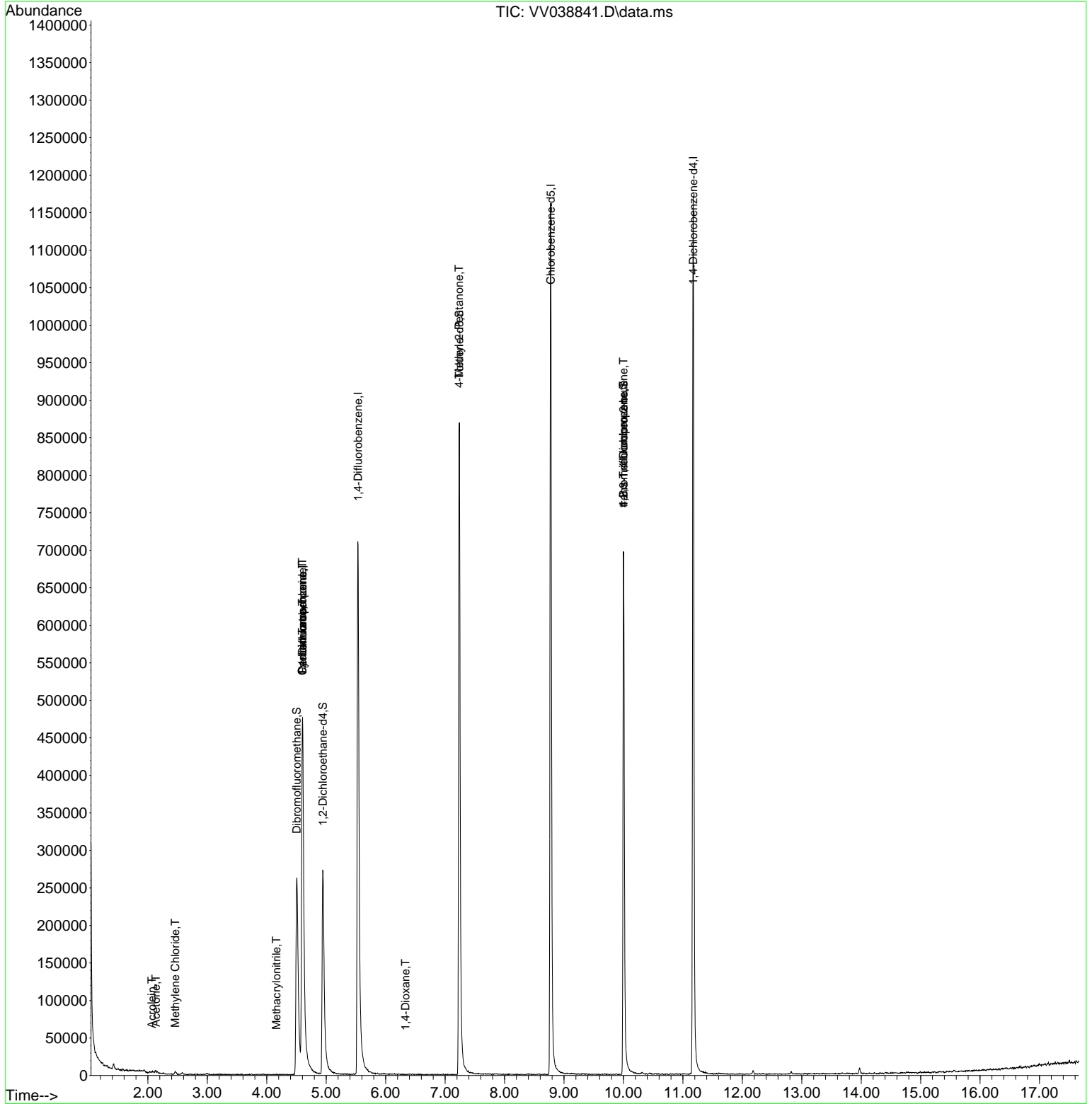
Compound	R.T.	QIon	Response	Conc	Units	Dev(Min)
-----						
Internal Standards						
1) Pentafluorobenzene	4.603	168	413719	50.000	ug/l	0.00
34) 1,4-Difluorobenzene	5.535	114	724343	50.000	ug/l	0.00
63) Chlorobenzene-d5	8.776	117	672085	50.000	ug/l	0.00
72) 1,4-Dichlorobenzene-d4	11.175	152	322277	50.000	ug/l	0.00
System Monitoring Compounds						
33) 1,2-Dichloroethane-d4	4.944	65	254805	54.954	ug/l	0.00
Spiked Amount	50.000	Range	81 - 118	Recovery	=	109.900%
35) Dibromofluoromethane	4.506	113	224163	48.857	ug/l	0.00
Spiked Amount	50.000	Range	80 - 119	Recovery	=	97.720%
50) Toluene-d8	7.239	98	632653	42.619	ug/l	0.00
Spiked Amount	50.000	Range	89 - 112	Recovery	=	85.240%#
62) 4-Bromofluorobenzene	10.001	95	235797	39.316	ug/l	0.00
Spiked Amount	50.000	Range	85 - 114	Recovery	=	78.640%#
Target Compounds						
					Qvalue	
3) Chloromethane	1.233	50	637	Below Cal	#	67
13) Acrolein	2.069	56	95	0.629	ug/l	94
16) Acetone	2.137	43	1794	1.161	ug/l	91
20) Methylene Chloride	2.462	84	1626	0.318	ug/l	# 65
31) Cyclohexane	4.600	56	7535	1.201	ug/l	# 2
36) 1,1-Dichloropropene	4.600	75	32346	5.810	ug/l	# 49
38) Carbon Tetrachloride	4.600	117	41812	5.706	ug/l	# 17
41) Methacrylonitrile	4.162	41	22	4.241	ug/l	# 15
49) 1,4-Dioxane	6.333	88	41	0.686	ug/l	# 26
51) 4-Methyl-2-Pentanone	7.236	43	2338	0.409	ug/l	# 1
76) 1,2,3-Trichloropropane	10.001	75	120593	24.185	ug/l	# 55
81) trans-1,4-Dichloro-2-b...	10.001	75	120593	51.480	ug/l	# 12
-----						

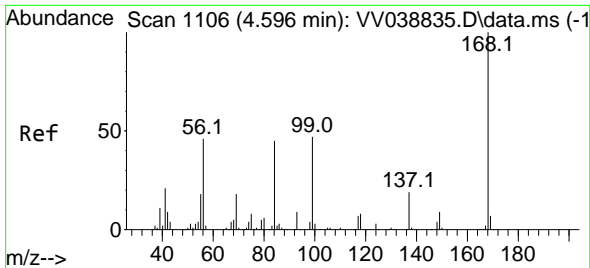
(#) = qualifier out of range (m) = manual integration (+) = signals summed

Data Path : Z:\voasrv\HPCHEM1\MSVOA\_V\DATA\VV070225\  
 Data File : VV038841.D  
 Acq On : 02 Jul 2025 15:34  
 Operator : SY/MD  
 Sample : VV0702WBL03  
 Misc : 5.0mL/MSVOA\_V/WATER  
 ALS Vial : 15 Sample Multiplier: 1

Instrument :  
 MSVOA\_V  
 ClientSampleId :  
 VV0702WBL03

Quant Time: Jul 03 03:01:28 2025  
 Quant Method : Z:\voasrv\HPCHEM1\MSVOA\_V\Method\82V070225W.M  
 Quant Title : SW846 8260  
 QLast Update : Thu Jul 03 02:44:44 2025  
 Response via : Initial Calibration

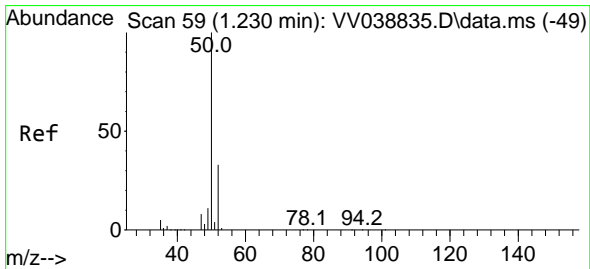
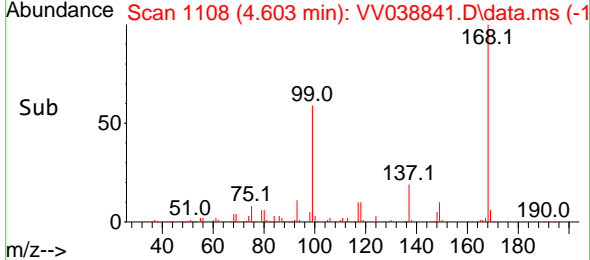
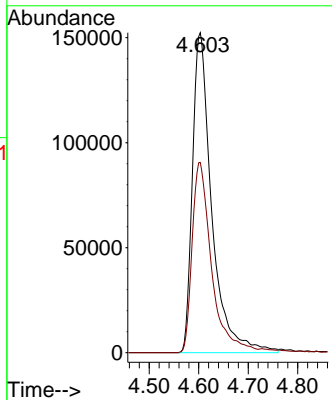
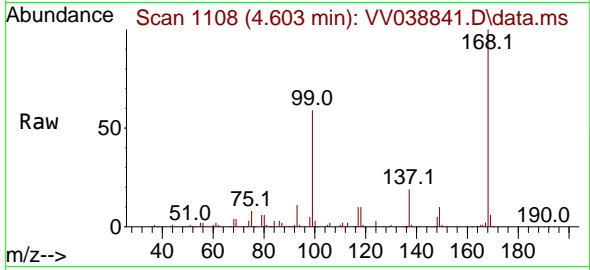




#1  
 Pentafluorobenzene  
 Concen: 50.000 ug/l  
 RT: 4.603 min Scan# 1106  
 Delta R.T. 0.007 min  
 Lab File: VV038841.D  
 Acq: 02 Jul 2025 15:34

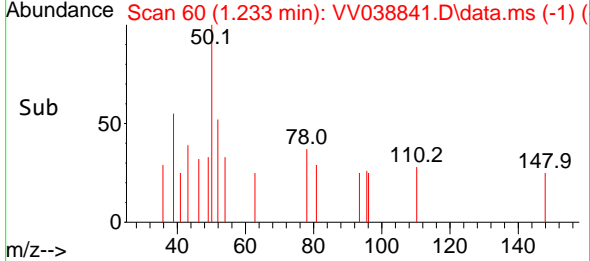
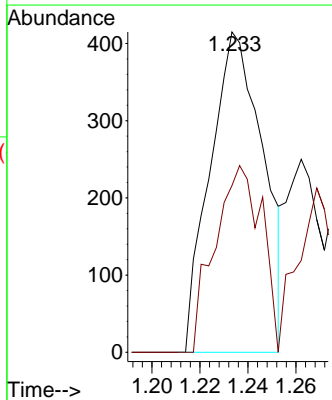
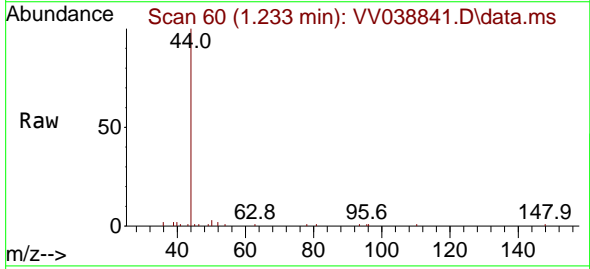
Instrument : MSVOA\_V  
 ClientSampleId : VV0702WBL03

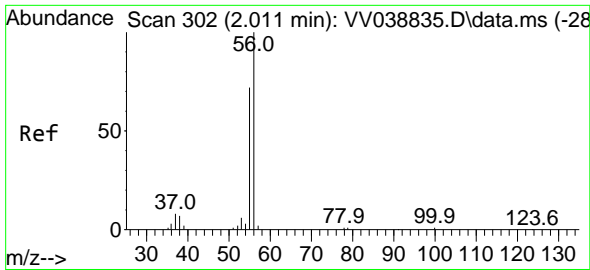
Tgt Ion:168 Resp: 413719  
 Ion Ratio Lower Upper  
 168 100  
 99 59.5 48.6 73.0



#3  
 Chloromethane  
 Concen: Below Cal  
 RT: 1.233 min Scan# 60  
 Delta R.T. 0.003 min  
 Lab File: VV038841.D  
 Acq: 02 Jul 2025 15:34

Tgt Ion: 50 Resp: 637  
 Ion Ratio Lower Upper  
 50 100  
 52 52.0 26.7 40.1#

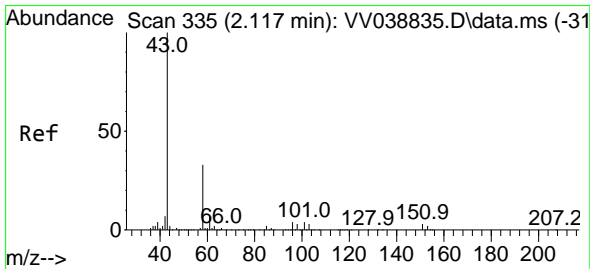
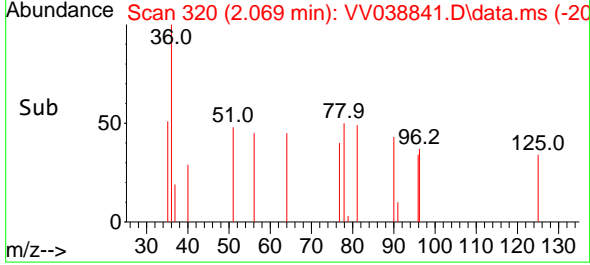
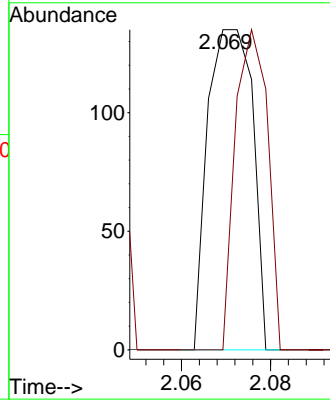
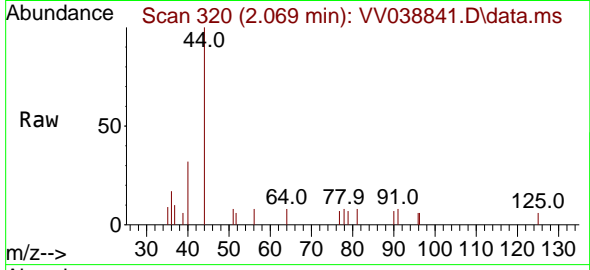




#13  
 Acrolein  
 Concen: 0.629 ug/l  
 RT: 2.069 min Scan# 311  
 Delta R.T. 0.058 min  
 Lab File: VV038841.D  
 Acq: 02 Jul 2025 15:34

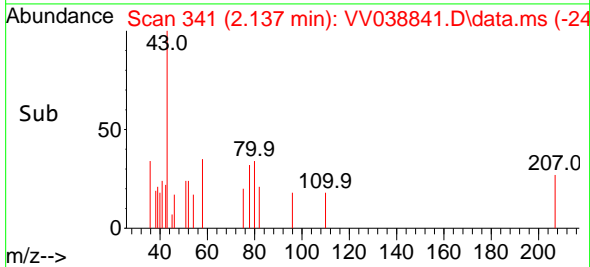
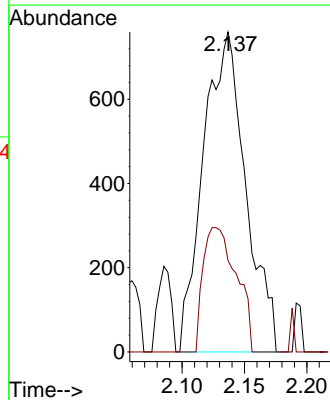
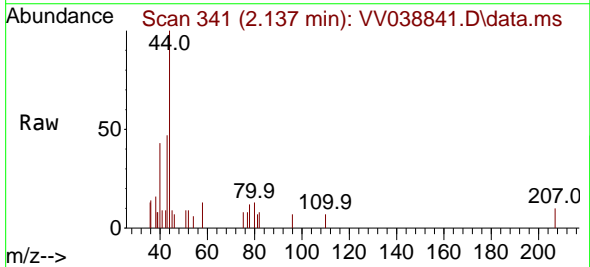
Instrument :  
 MSVOA\_V  
 ClientSampleId :  
 VV0702WBL03

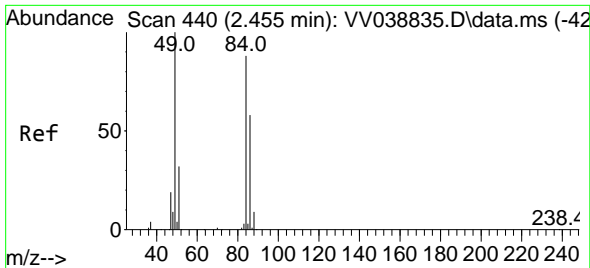
Tgt Ion: 56 Resp: 95  
 Ion Ratio Lower Upper  
 56 100  
 55 71.6 53.4 80.2



#16  
 Acetone  
 Concen: 1.161 ug/l  
 RT: 2.137 min Scan# 341  
 Delta R.T. 0.019 min  
 Lab File: VV038841.D  
 Acq: 02 Jul 2025 15:34

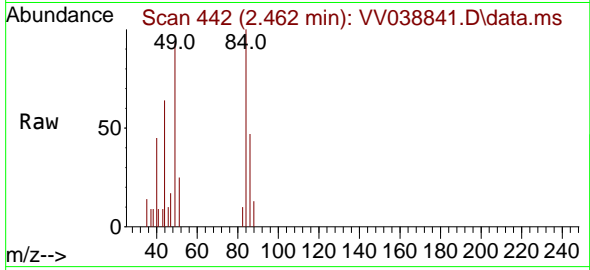
Tgt Ion: 43 Resp: 1794  
 Ion Ratio Lower Upper  
 43 100  
 58 28.6 27.0 40.4





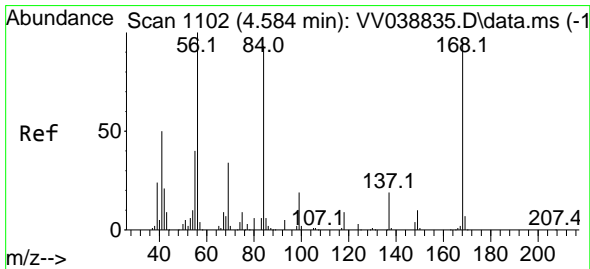
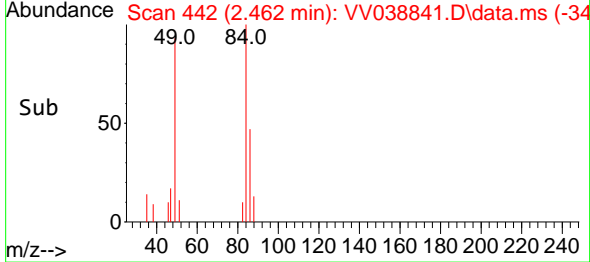
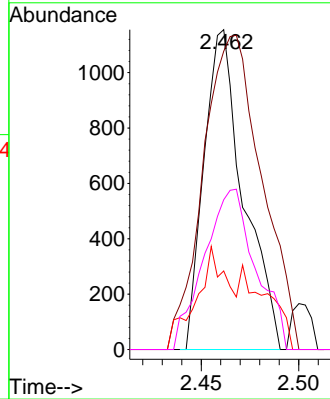
#20  
 Methylene Chloride  
 Concen: 0.318 ug/l  
 RT: 2.462 min Scan# 440  
 Delta R.T. 0.007 min  
 Lab File: VV038841.D  
 Acq: 02 Jul 2025 15:34

Instrument : MSVOA\_V  
 ClientSampleId : VV0702WBL03

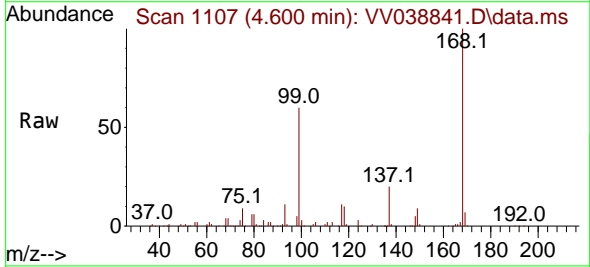


Tgt Ion: 84 Resp: 1626

Ion	Ratio	Lower	Upper
84	100		
49	79.4	91.0	136.4#
51	14.6	29.4	44.2#
86	36.5	53.2	79.8#

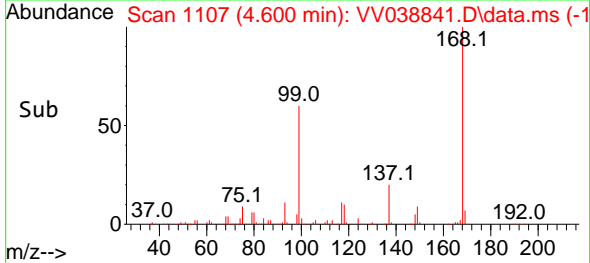
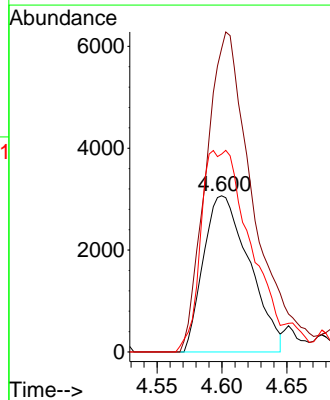


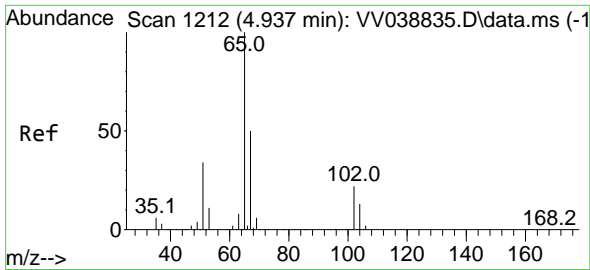
#31  
 Cyclohexane  
 Concen: 1.201 ug/l  
 RT: 4.600 min Scan# 1107  
 Delta R.T. 0.016 min  
 Lab File: VV038841.D  
 Acq: 02 Jul 2025 15:34



Tgt Ion: 56 Resp: 7535

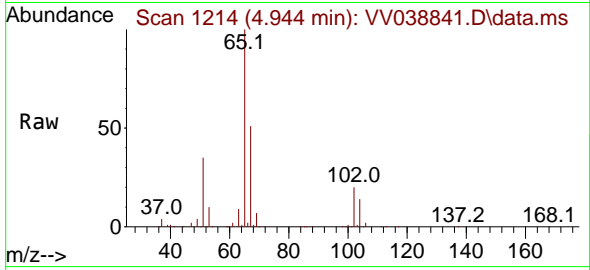
Ion	Ratio	Lower	Upper
56	100		
69	194.3	27.0	40.4#
84	123.2	74.4	111.6#



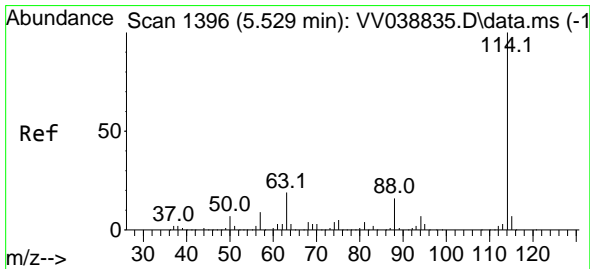
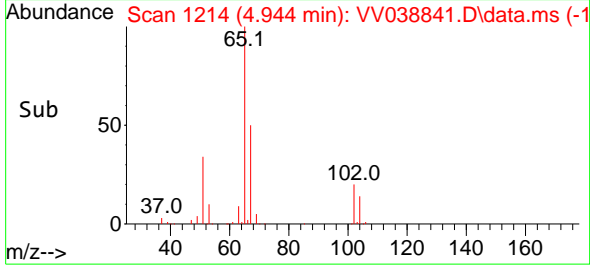
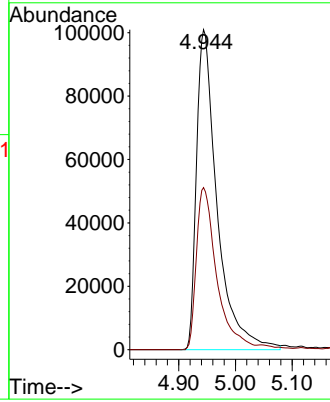


#33  
 1,2-Dichloroethane-d4  
 Concen: 54.954 ug/l  
 RT: 4.944 min Scan# 11  
 Delta R.T. 0.007 min  
 Lab File: VV038841.D  
 Acq: 02 Jul 2025 15:34

Instrument :  
 MSVOA\_V  
 ClientSampleId :  
 VV0702WBL03

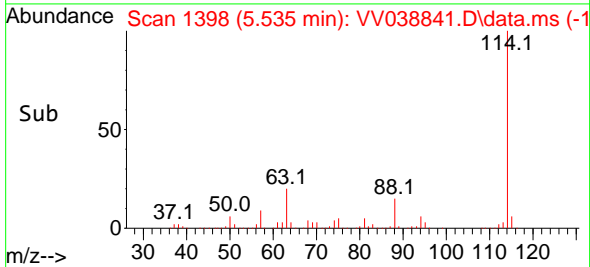
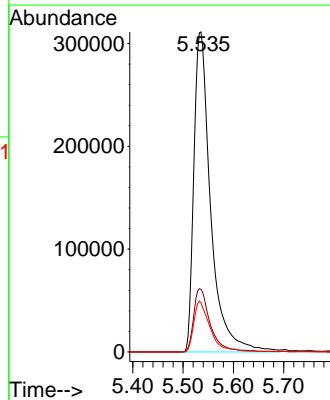
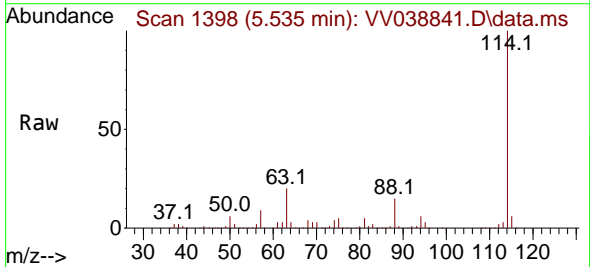


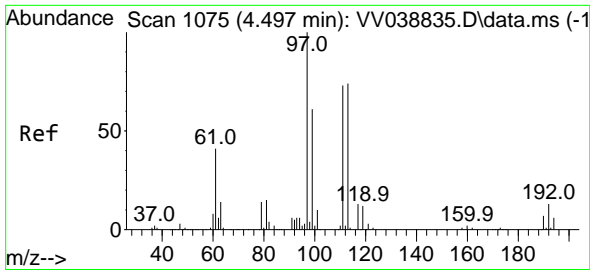
Tgt Ion: 65 Resp: 254805  
 Ion Ratio Lower Upper  
 65 100  
 67 49.8 0.0 105.0



#34  
 1,4-Difluorobenzene  
 Concen: 50.000 ug/l  
 RT: 5.535 min Scan# 1398  
 Delta R.T. 0.007 min  
 Lab File: VV038841.D  
 Acq: 02 Jul 2025 15:34

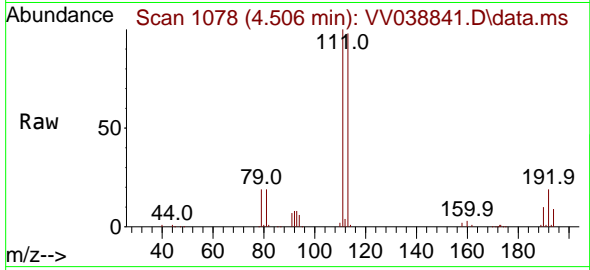
Tgt Ion:114 Resp: 724343  
 Ion Ratio Lower Upper  
 114 100  
 63 19.6 0.0 38.4  
 88 15.3 0.0 31.2



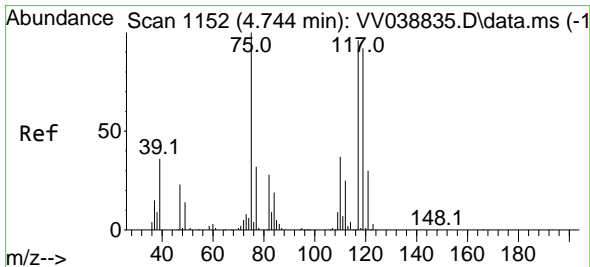
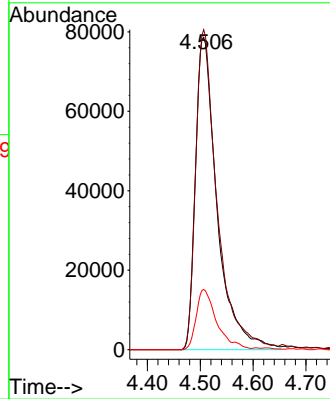
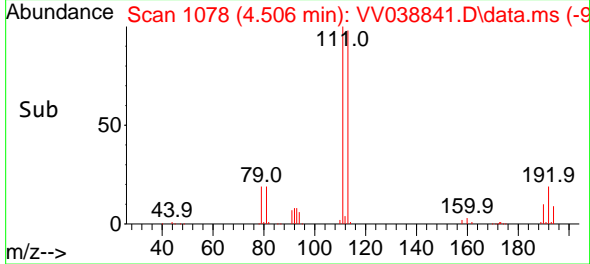


#35  
 Dibromofluoromethane  
 Concen: 48.857 ug/l  
 RT: 4.506 min Scan# 1107  
 Delta R.T. 0.010 min  
 Lab File: VV038841.D  
 Acq: 02 Jul 2025 15:34

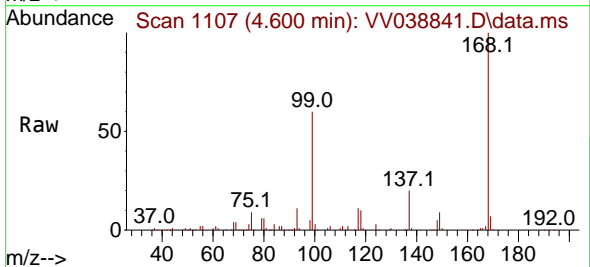
Instrument :  
 MSVOA\_V  
 ClientSampleId :  
 VV0702WBL03



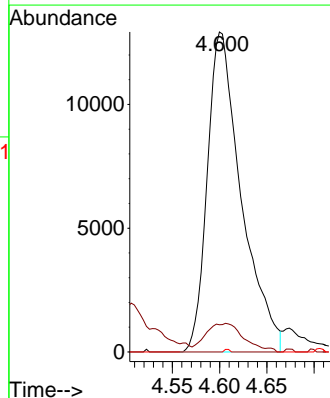
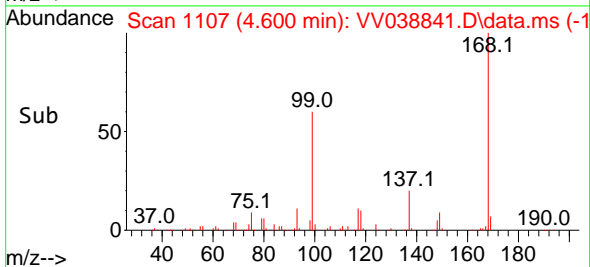
Tgt Ion:113 Resp: 224163  
 Ion Ratio Lower Upper  
 113 100  
 111 101.6 81.5 122.3  
 192 18.3 14.7 22.1

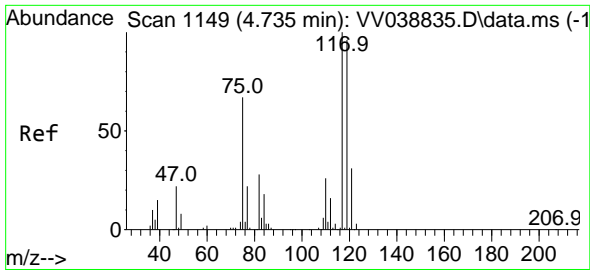


#36  
 1,1-Dichloropropene  
 Concen: 5.810 ug/l  
 RT: 4.600 min Scan# 1107  
 Delta R.T. -0.145 min  
 Lab File: VV038841.D  
 Acq: 02 Jul 2025 15:34



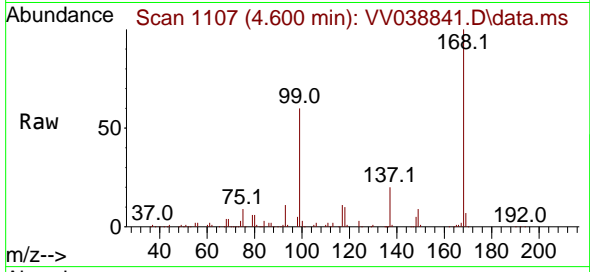
Tgt Ion: 75 Resp: 32346  
 Ion Ratio Lower Upper  
 75 100  
 110 10.0 19.3 57.9#  
 77 0.1 25.1 37.7#



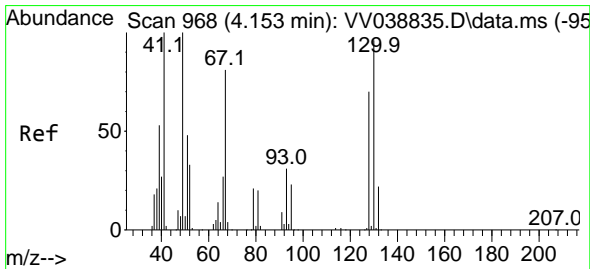
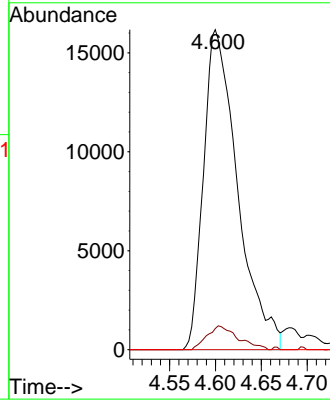
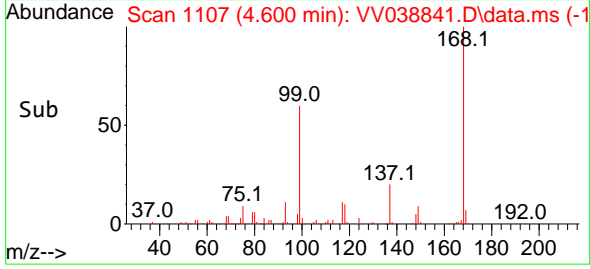


#38  
 Carbon Tetrachloride  
 Concen: 5.706 ug/l  
 RT: 4.600 min Scan# 1117  
 Delta R.T. -0.135 min  
 Lab File: VV038841.D  
 Acq: 02 Jul 2025 15:34

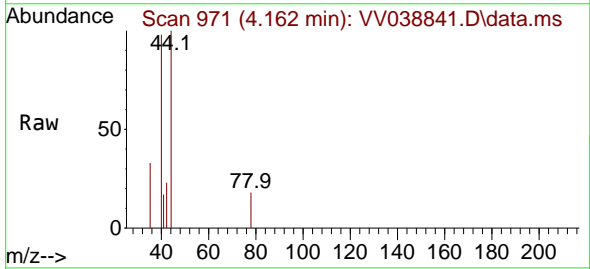
Instrument : MSVOA\_V  
 ClientSampleId : VV0702WBL03



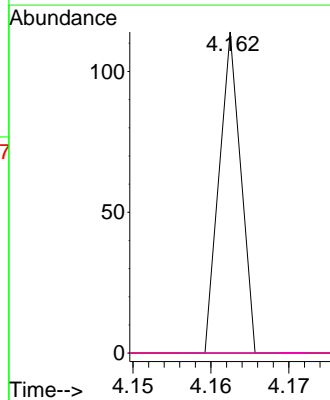
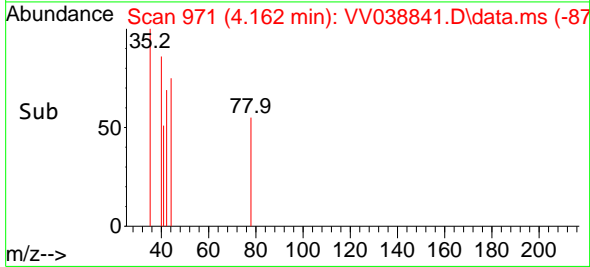
Tgt Ion: 117 Resp: 41812  
 Ion Ratio Lower Upper  
 117 100  
 119 6.6 76.5 114.7#  
 121 0.0 25.0 37.6#



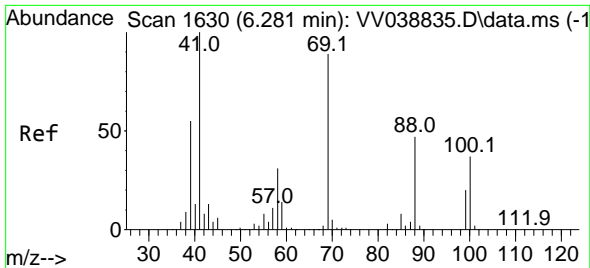
#41  
 Methacrylonitrile  
 Concen: 4.241 ug/l  
 RT: 4.162 min Scan# 971  
 Delta R.T. 0.010 min  
 Lab File: VV038841.D  
 Acq: 02 Jul 2025 15:34



Tgt Ion: 41 Resp: 22  
 Ion Ratio Lower Upper  
 41 100  
 39 0.0 43.8 65.8#  
 67 0.0 78.8 118.2#  
 52 0.0 30.3 45.5#



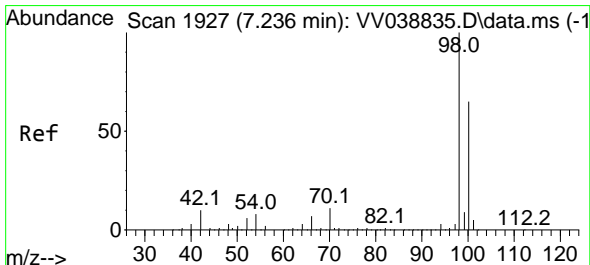
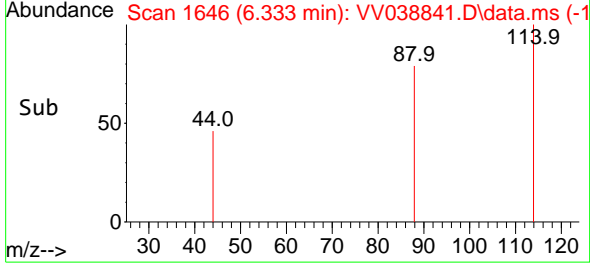
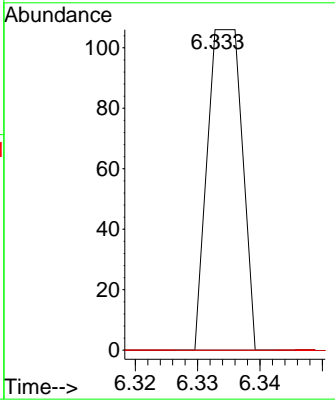
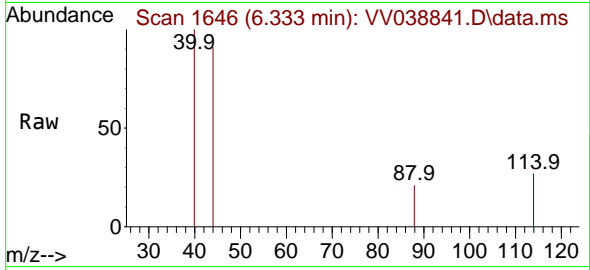




#49  
 1,4-Dioxane  
 Concen: 0.686 ug/l  
 RT: 6.333 min Scan# 1646  
 Delta R.T. 0.052 min  
 Lab File: VV038841.D  
 Acq: 02 Jul 2025 15:34

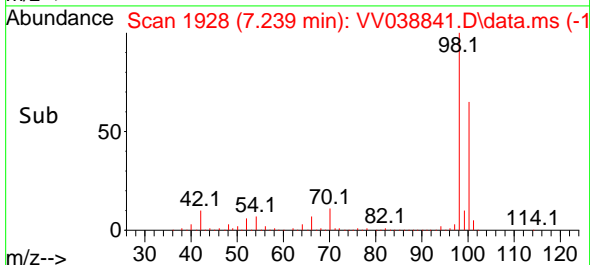
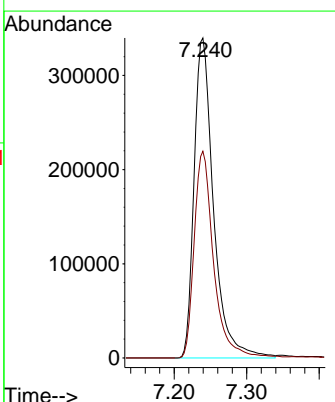
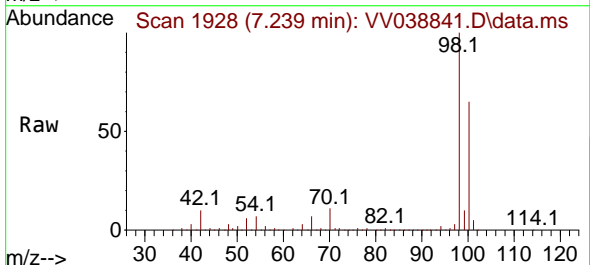
Instrument : MSVOA\_V  
 ClientSampleId : VV0702WBL03

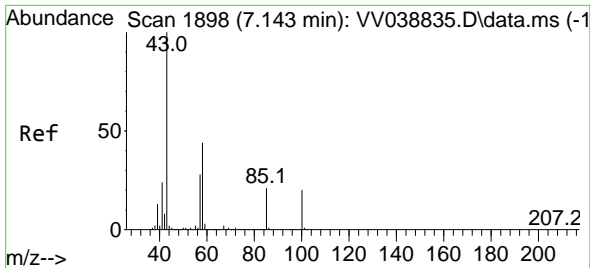
Tgt Ion	Resp	Lower	Upper
88	100		
43	0.0	25.2	37.8#
58	0.0	52.1	78.1#



#50  
 Toluene-d8  
 Concen: 42.619 ug/l  
 RT: 7.239 min Scan# 1928  
 Delta R.T. 0.003 min  
 Lab File: VV038841.D  
 Acq: 02 Jul 2025 15:34

Tgt Ion	Resp	Lower	Upper
98	100		
100	64.8	53.0	79.4

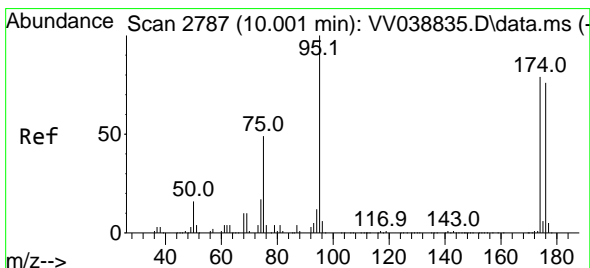
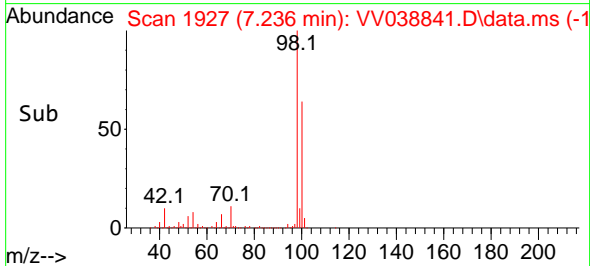
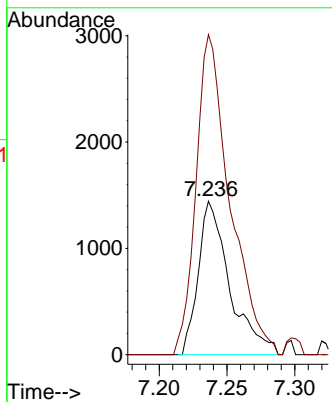
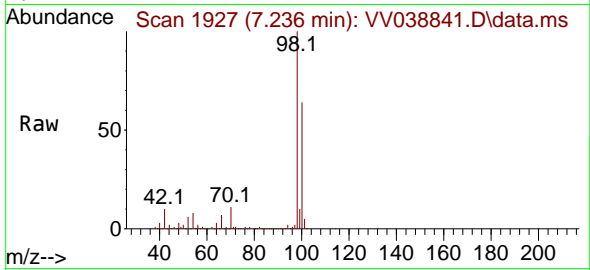




#51  
 4-Methyl-2-Pentanone  
 Concen: 0.409 ug/l  
 RT: 7.236 min Scan# 1927  
 Delta R.T. 0.093 min  
 Lab File: VV038841.D  
 Acq: 02 Jul 2025 15:34

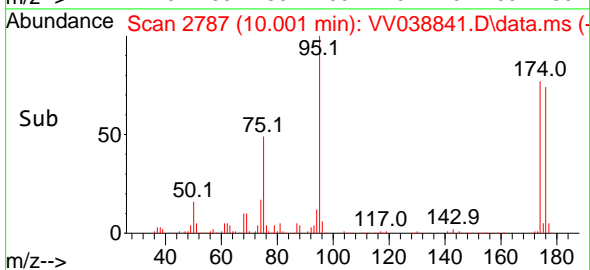
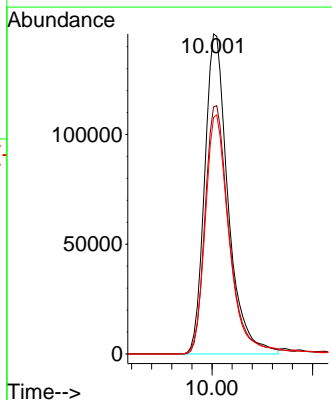
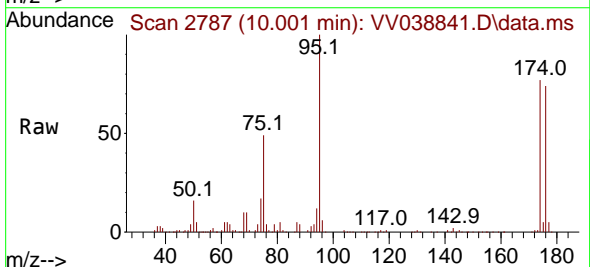
Instrument : MSVOA\_V  
 ClientSampleId : VV0702WBL03

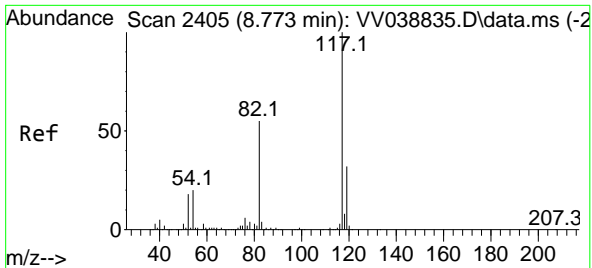
Tgt Ion: 43 Resp: 2338  
 Ion Ratio Lower Upper  
 43 100  
 58 224.0 34.4 51.6#



#62  
 4-Bromofluorobenzene  
 Concen: 39.316 ug/l  
 RT: 10.001 min Scan# 2787  
 Delta R.T. 0.000 min  
 Lab File: VV038841.D  
 Acq: 02 Jul 2025 15:34

Tgt Ion: 95 Resp: 235797  
 Ion Ratio Lower Upper  
 95 100  
 174 80.0 0.0 158.2  
 176 76.6 0.0 154.4



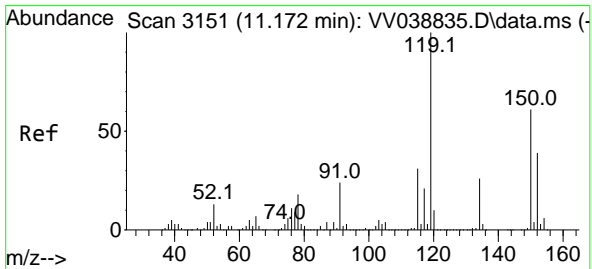
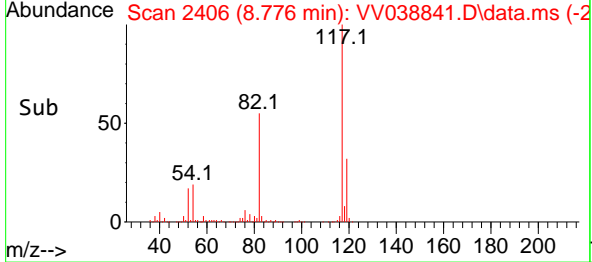
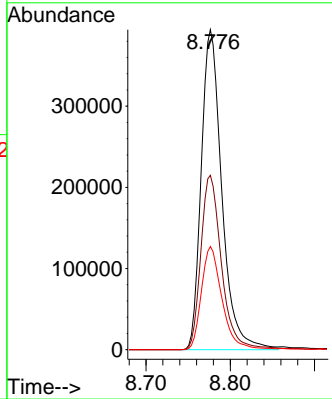
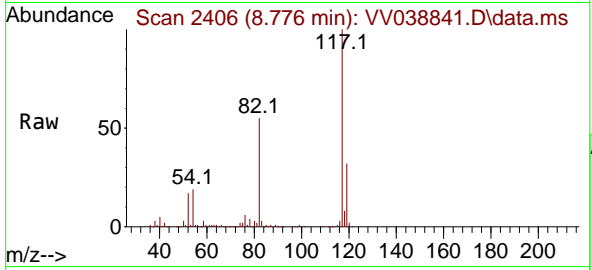


#63  
 Chlorobenzene-d5  
 Concen: 50.000 ug/l  
 RT: 8.776 min Scan# 2406  
 Delta R.T. 0.003 min  
 Lab File: VV038841.D  
 Acq: 02 Jul 2025 15:34

Instrument : MSVOA\_V  
 ClientSampleId : VV0702WBL03

Tgt Ion:117 Resp: 672085

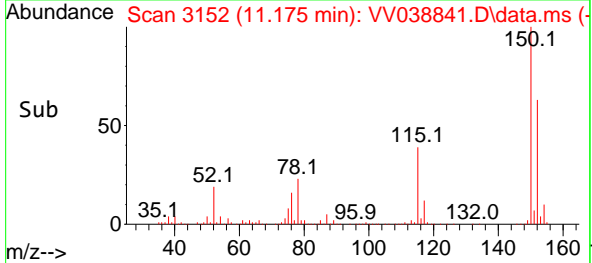
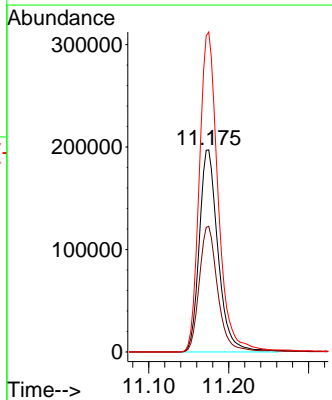
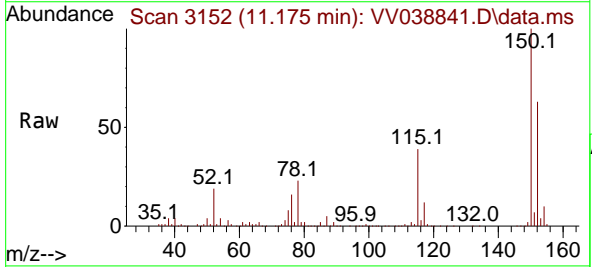
Ion	Ratio	Lower	Upper
117	100		
82	54.5	44.2	66.4
119	32.3	25.5	38.3

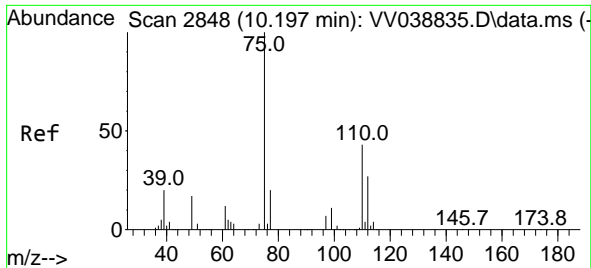


#72  
 1,4-Dichlorobenzene-d4  
 Concen: 50.000 ug/l  
 RT: 11.175 min Scan# 3152  
 Delta R.T. 0.003 min  
 Lab File: VV038841.D  
 Acq: 02 Jul 2025 15:34

Tgt Ion:152 Resp: 322277

Ion	Ratio	Lower	Upper
152	100		
115	61.1	42.0	126.0
150	159.2	0.0	343.6

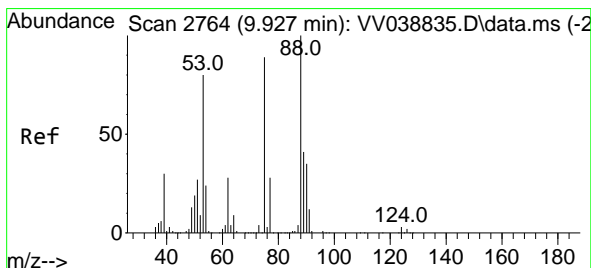
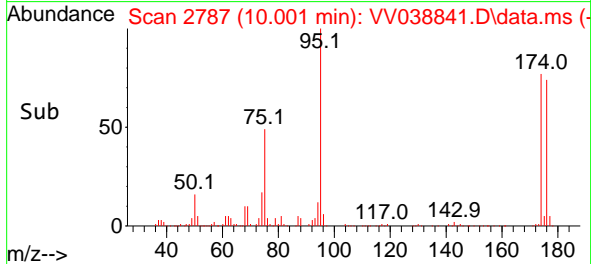
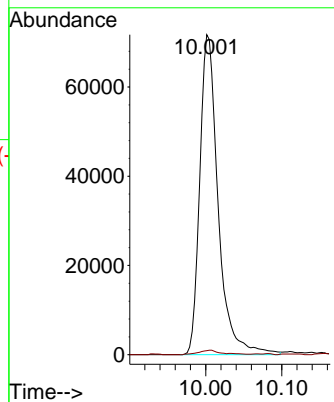
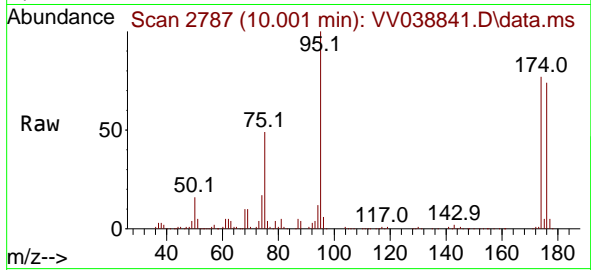




#76  
 1,2,3-Trichloropropane  
 Concen: 24.185 ug/l  
 RT: 10.001 min Scan# 2787  
 Delta R.T. -0.196 min  
 Lab File: VV038841.D  
 Acq: 02 Jul 2025 15:34

Instrument : MSVOA\_V  
 ClientSampleId : VV0702WBL03

Tgt Ion: 75 Resp: 120593  
 Ion Ratio Lower Upper  
 75 100  
 77 1.5 11.7 35.1#



#81  
 trans-1,4-Dichloro-2-butene  
 Concen: 51.480 ug/l  
 RT: 10.001 min Scan# 2787  
 Delta R.T. 0.074 min  
 Lab File: VV038841.D  
 Acq: 02 Jul 2025 15:34

Tgt Ion: 75 Resp: 120593  
 Ion Ratio Lower Upper  
 75 100  
 53 0.1 71.2 106.8#  
 89 0.0 44.6 66.8#

