

Data Path : Z:\voasrv\HPCHEM1\MSVOA_V\DATA\VV070225\
 Data File : VV038842.D
 Acq On : 02 Jul 2025 15:55
 Operator : SY/MD
 Sample : VV0702WBL04
 Misc : 5.0mL/MSVOA_V/WATER
 ALS Vial : 16 Sample Multiplier: 1

Instrument :
 MSVOA_V
ClientSampleId :
 VV0702WBL04

Quant Time: Jul 03 03:01:48 2025
 Quant Method : Z:\voasrv\HPCHEM1\MSVOA_V\Method\82V070225W.M
 Quant Title : SW846 8260
 QLast Update : Thu Jul 03 02:44:44 2025
 Response via : Initial Calibration

Compound	R.T.	QIon	Response	Conc	Units	Dev(Min)

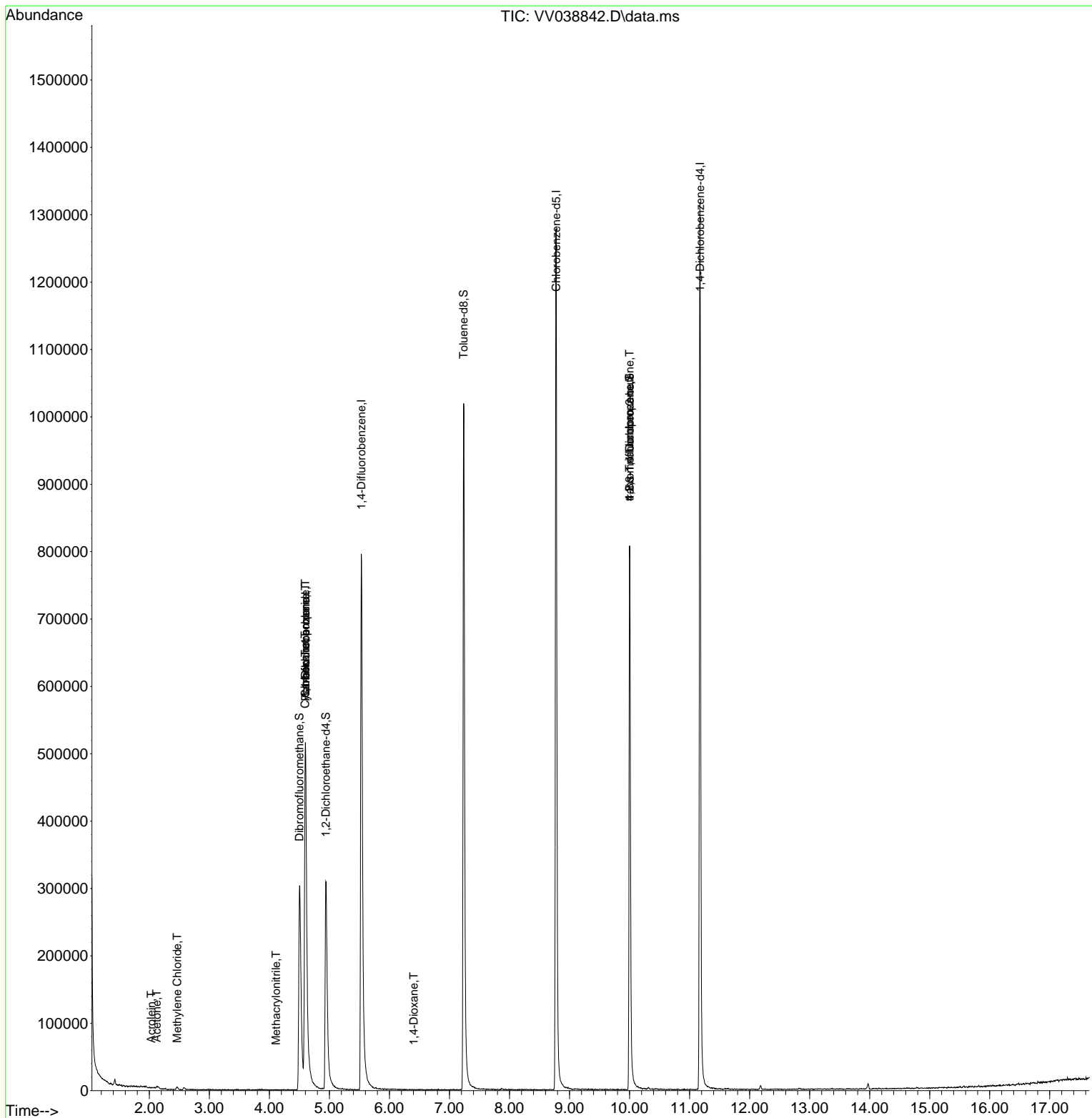
Internal Standards						
1) Pentafluorobenzene	4.603	168	452238	50.000	ug/l	0.00
34) 1,4-Difluorobenzene	5.532	114	782441	50.000	ug/l	0.00
63) Chlorobenzene-d5	8.776	117	746449	50.000	ug/l	0.00
72) 1,4-Dichlorobenzene-d4	11.175	152	362598	50.000	ug/l	0.00
System Monitoring Compounds						
33) 1,2-Dichloroethane-d4	4.941	65	288031	56.829	ug/l	0.00
Spiked Amount	50.000	Range 81 - 118	Recovery	=	113.660%	
35) Dibromofluoromethane	4.503	113	256242	51.702	ug/l	0.00
Spiked Amount	50.000	Range 80 - 119	Recovery	=	103.400%	
50) Toluene-d8	7.236	98	739118	46.094	ug/l	0.00
Spiked Amount	50.000	Range 89 - 112	Recovery	=	92.180%	
62) 4-Bromofluorobenzene	10.001	95	277644	42.857	ug/l	0.00
Spiked Amount	50.000	Range 85 - 114	Recovery	=	85.720%	
Target Compounds						
						Qvalue
3) Chloromethane	1.230	50	929	Below Cal	#	81
13) Acrolein	2.034	56	49	0.297	ug/l #	1
16) Acetone	2.124	43	1008	0.597	ug/l #	67
20) Methylene Chloride	2.465	84	2063	0.370	ug/l #	78
31) Cyclohexane	4.597	56	7926	1.156	ug/l #	2
36) 1,1-Dichloropropene	4.600	75	36743	6.110	ug/l #	48
38) Carbon Tetrachloride	4.600	117	44263	5.592	ug/l #	17
41) Methacrylonitrile	4.111	41	102	4.265	ug/l #	15
49) 1,4-Dioxane	6.407	88	21	0.325	ug/l #	26
76) 1,2,3-Trichloropropane	10.001	75	140929	25.120	ug/l #	55
81) trans-1,4-Dichloro-2-b...	10.001	75	140929	53.471	ug/l #	12

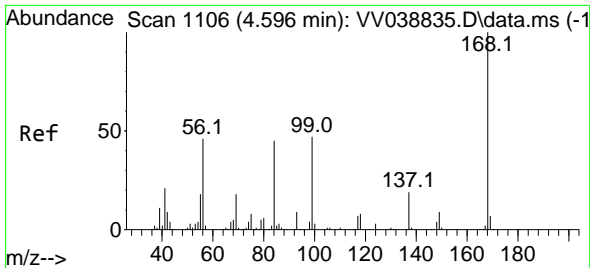
(#) = qualifier out of range (m) = manual integration (+) = signals summed

Data Path : Z:\voasrv\HPCHEM1\MSVOA_V\DATA\VV070225\
 Data File : VV038842.D
 Acq On : 02 Jul 2025 15:55
 Operator : SY/MD
 Sample : VV0702WBL04
 Misc : 5.0mL/MSVOA_V/WATER
 ALS Vial : 16 Sample Multiplier: 1

Instrument :
 MSVOA_V
 ClientSampleId :
 VV0702WBL04

Quant Time: Jul 03 03:01:48 2025
 Quant Method : Z:\voasrv\HPCHEM1\MSVOA_V\Method\82V070225W.M
 Quant Title : SW846 8260
 QLast Update : Thu Jul 03 02:44:44 2025
 Response via : Initial Calibration

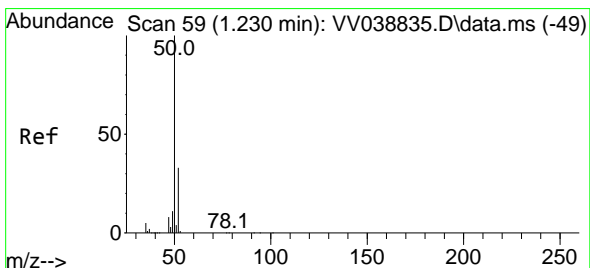
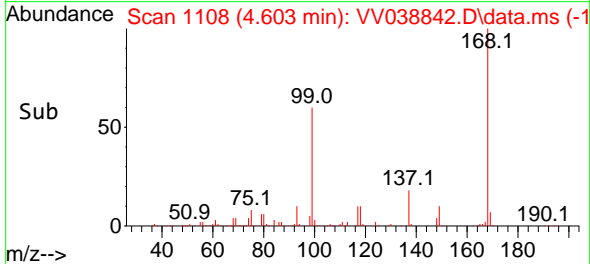
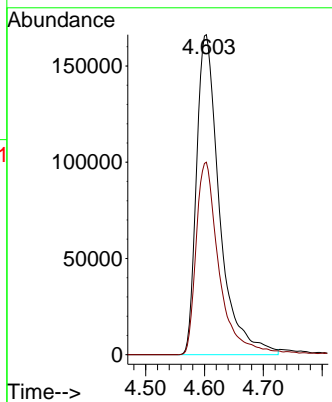
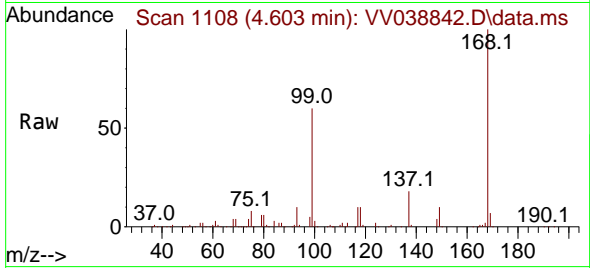




#1
 Pentafluorobenzene
 Concen: 50.000 ug/l
 RT: 4.603 min Scan# 1106
 Delta R.T. 0.007 min
 Lab File: VV038842.D
 Acq: 02 Jul 2025 15:55

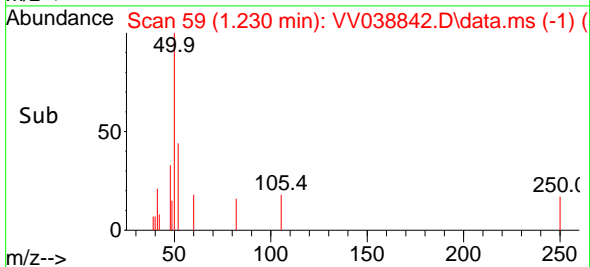
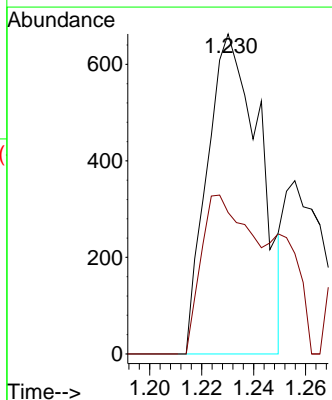
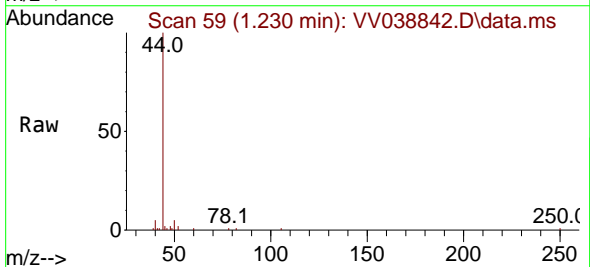
Instrument : MSVOA_V
 ClientSampleId : VV0702WBL04

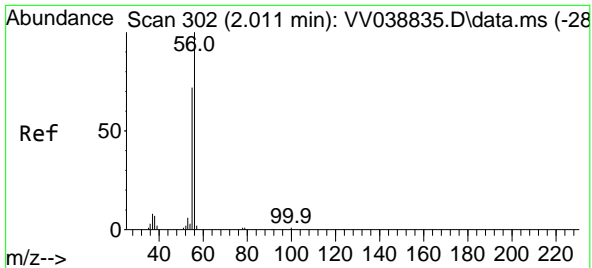
Tgt Ion:168 Resp: 452238
 Ion Ratio Lower Upper
 168 100
 99 60.1 48.6 73.0



#3
 Chloromethane
 Concen: Below Cal
 RT: 1.230 min Scan# 59
 Delta R.T. 0.000 min
 Lab File: VV038842.D
 Acq: 02 Jul 2025 15:55

Tgt Ion: 50 Resp: 929
 Ion Ratio Lower Upper
 50 100
 52 44.2 26.7 40.1#

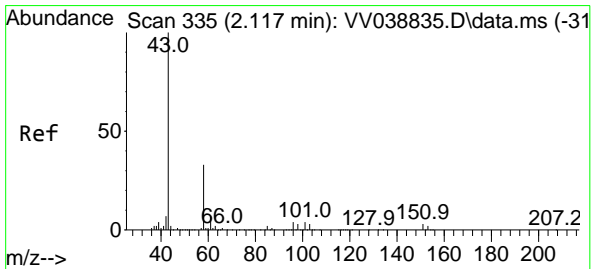
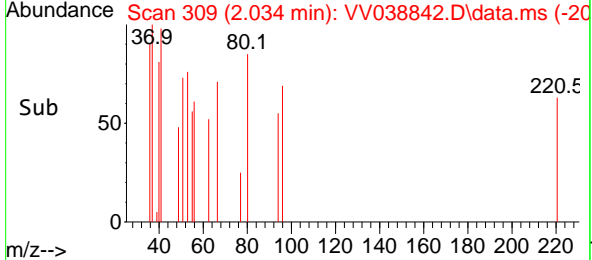
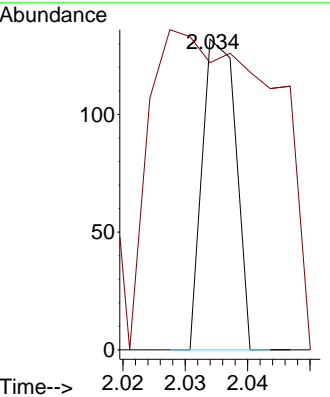
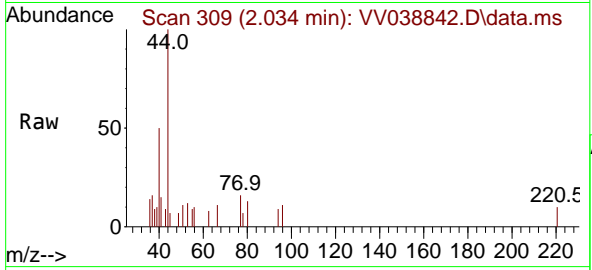




#13
 Acrolein
 Concen: 0.297 ug/l
 RT: 2.034 min Scan# 309
 Delta R.T. 0.023 min
 Lab File: VV038842.D
 Acq: 02 Jul 2025 15:55

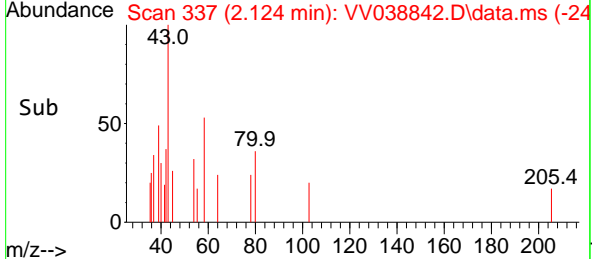
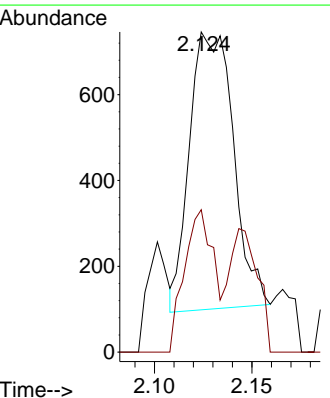
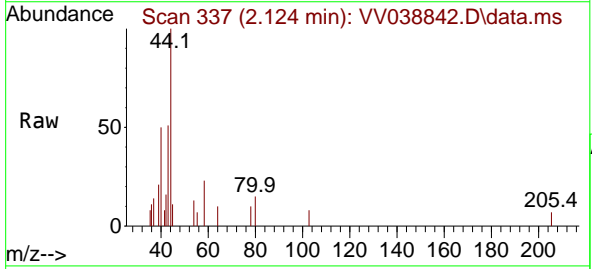
Instrument : MSVOA_V
 ClientSampleId : VV0702WBL04

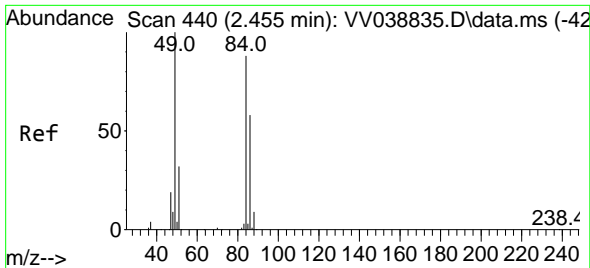
Tgt Ion: 56 Resp: 49
 Ion Ratio Lower Upper
 56 100
 55 379.6 53.4 80.2#



#16
 Acetone
 Concen: 0.597 ug/l
 RT: 2.124 min Scan# 337
 Delta R.T. 0.007 min
 Lab File: VV038842.D
 Acq: 02 Jul 2025 15:55

Tgt Ion: 43 Resp: 1008
 Ion Ratio Lower Upper
 43 100
 58 52.3 27.0 40.4#





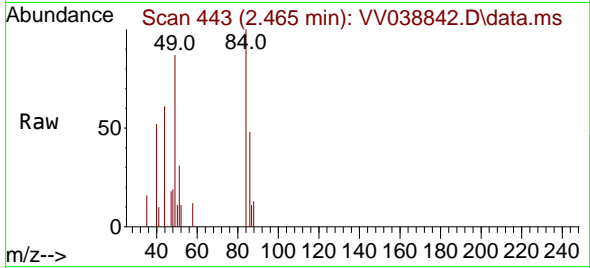
#20
 Methylene Chloride
 Concen: 0.370 ug/l
 RT: 2.465 min Scan# 440
 Delta R.T. 0.010 min
 Lab File: VV038842.D
 Acq: 02 Jul 2025 15:55

Instrument :

MSVOA_V

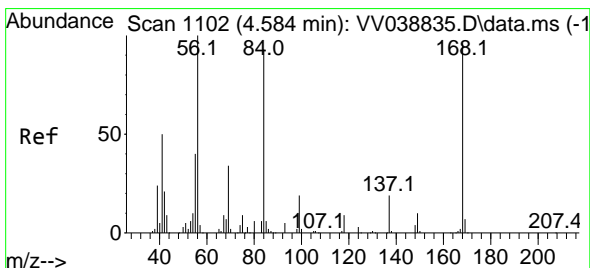
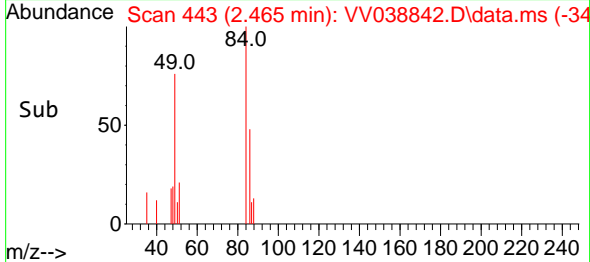
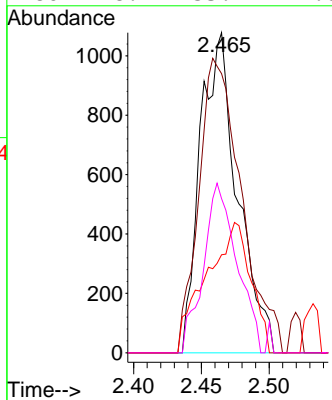
ClientSampleId :

VV0702WBL04



Tgt Ion: 84 Resp: 2063

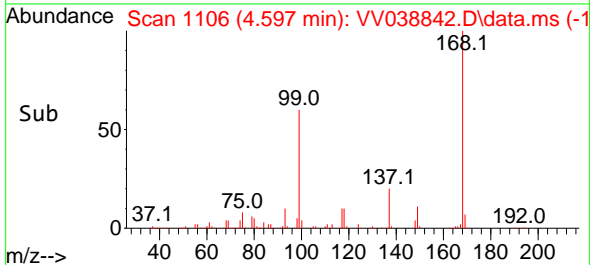
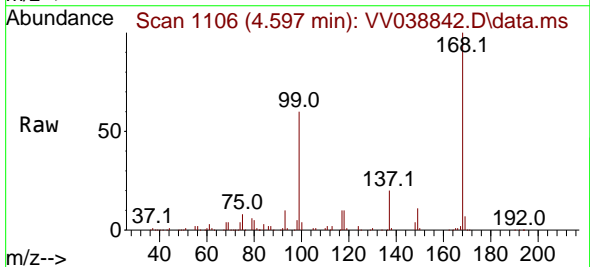
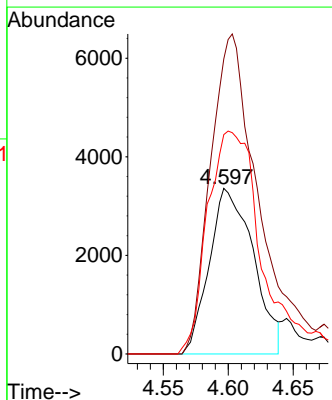
Ion	Ratio	Lower	Upper
84	100		
49	87.2	91.0	136.4#
51	30.6	29.4	44.2
86	48.1	53.2	79.8#

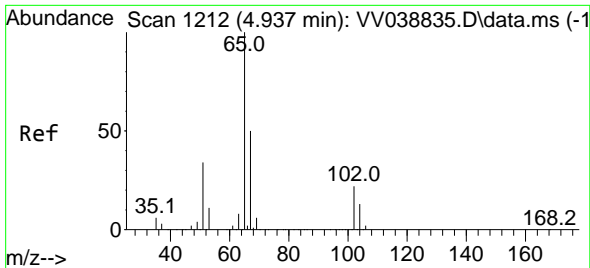


#31
 Cyclohexane
 Concen: 1.156 ug/l
 RT: 4.597 min Scan# 1106
 Delta R.T. 0.013 min
 Lab File: VV038842.D
 Acq: 02 Jul 2025 15:55

Tgt Ion: 56 Resp: 7926

Ion	Ratio	Lower	Upper
56	100		
69	178.2	27.0	40.4#
84	132.5	74.4	111.6#

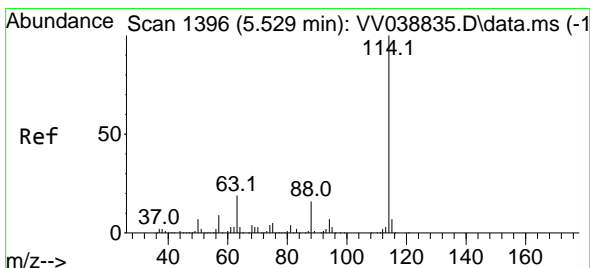
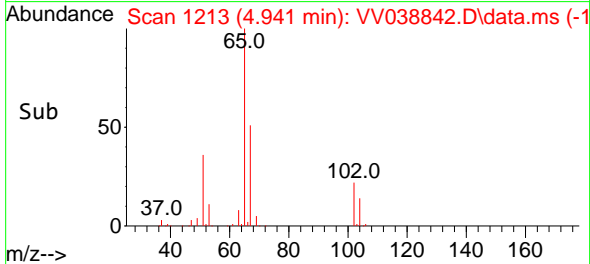
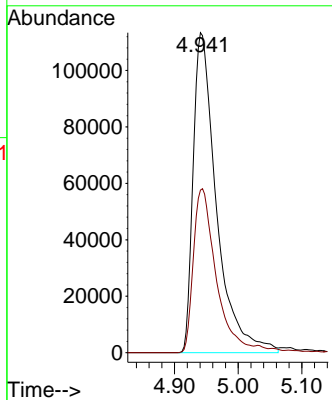
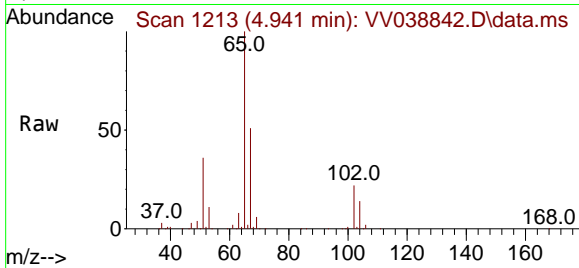




#33
 1,2-Dichloroethane-d4
 Concen: 56.829 ug/l
 RT: 4.941 min Scan# 11
 Delta R.T. 0.003 min
 Lab File: VV038842.D
 Acq: 02 Jul 2025 15:55

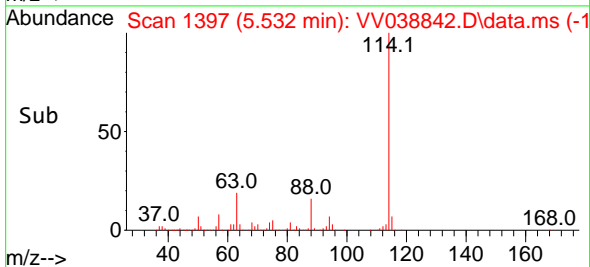
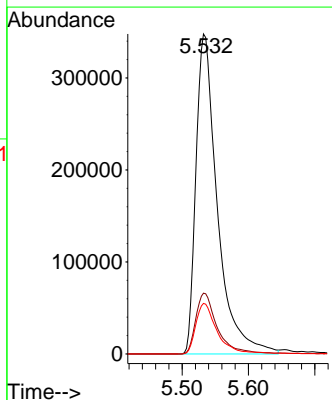
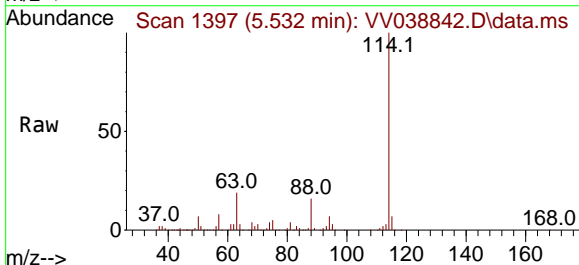
Instrument :
 MSVOA_V
 ClientSampleId :
 VV0702WBL04

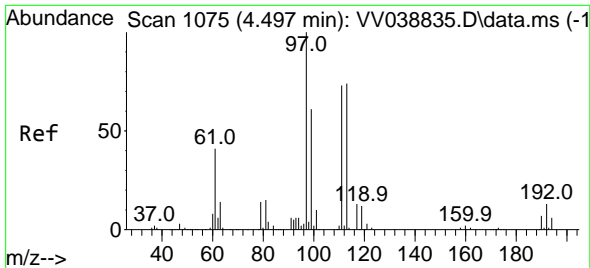
Tgt Ion: 65 Resp: 288031
 Ion Ratio Lower Upper
 65 100
 67 49.6 0.0 105.0



#34
 1,4-Difluorobenzene
 Concen: 50.000 ug/l
 RT: 5.532 min Scan# 1397
 Delta R.T. 0.003 min
 Lab File: VV038842.D
 Acq: 02 Jul 2025 15:55

Tgt Ion:114 Resp: 782441
 Ion Ratio Lower Upper
 114 100
 63 19.0 0.0 38.4
 88 15.8 0.0 31.2



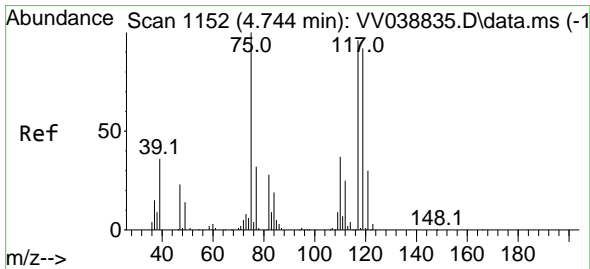
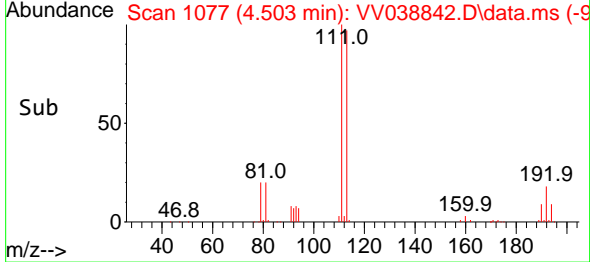
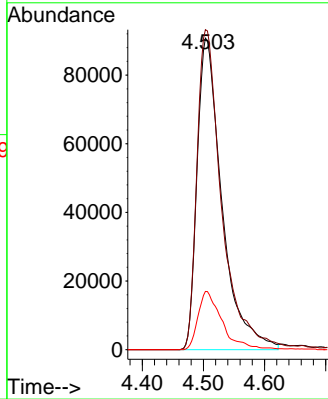
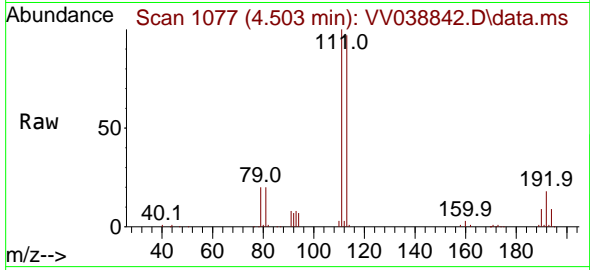


#35
 Dibromofluoromethane
 Concen: 51.702 ug/l
 RT: 4.503 min Scan# 1107
 Delta R.T. 0.007 min
 Lab File: VV038842.D
 Acq: 02 Jul 2025 15:55

Instrument : MSVOA_V
 ClientSampleId : VV0702WBL04

Tgt Ion:113 Resp: 256242

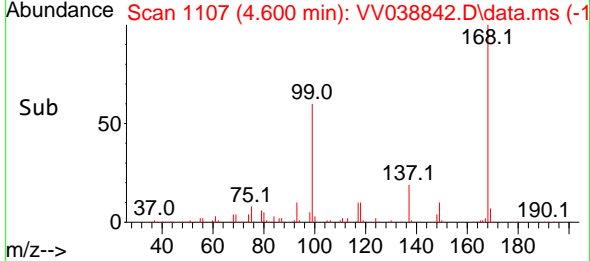
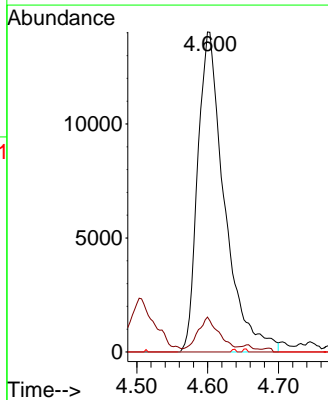
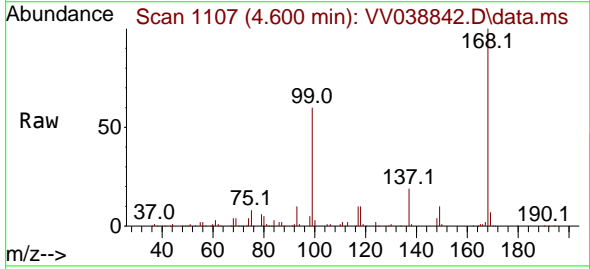
Ion	Ratio	Lower	Upper
113	100		
111	102.4	81.5	122.3
192	18.0	14.7	22.1

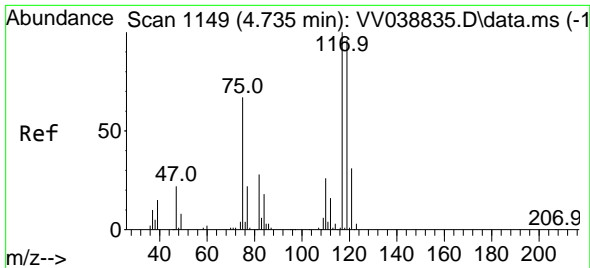


#36
 1,1-Dichloropropene
 Concen: 6.110 ug/l
 RT: 4.600 min Scan# 1107
 Delta R.T. -0.145 min
 Lab File: VV038842.D
 Acq: 02 Jul 2025 15:55

Tgt Ion: 75 Resp: 36743

Ion	Ratio	Lower	Upper
75	100		
110	9.0	19.3	57.9#
77	0.0	25.1	37.7#



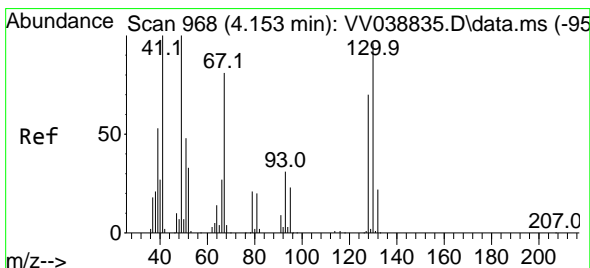
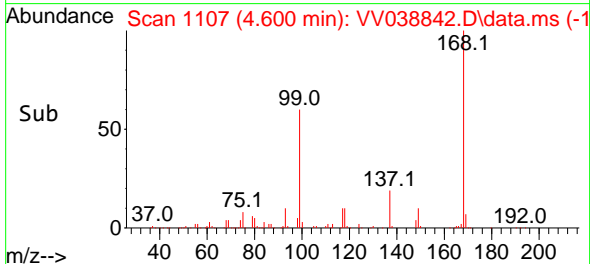
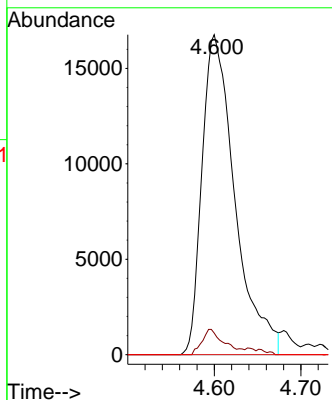
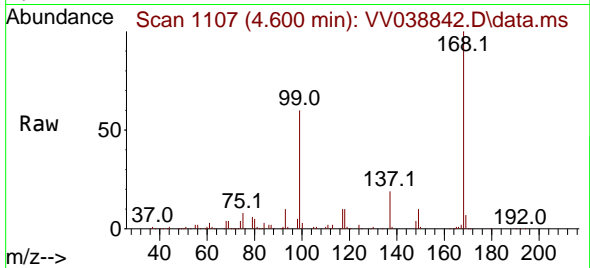


#38
 Carbon Tetrachloride
 Concen: 5.592 ug/l
 RT: 4.600 min Scan# 1117
 Delta R.T. -0.135 min
 Lab File: VV038842.D
 Acq: 02 Jul 2025 15:55

Instrument : MSVOA_V
 ClientSampleId : VV0702WBL04

Tgt Ion: 117 Resp: 44263

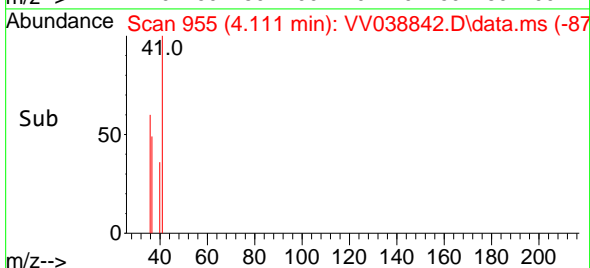
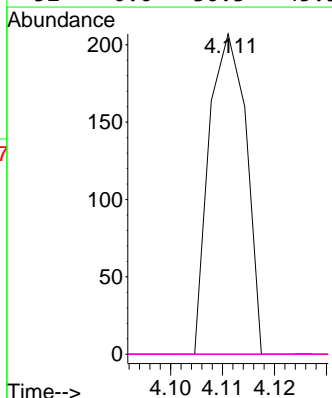
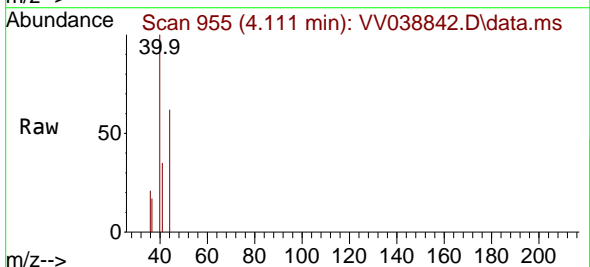
Ion	Ratio	Lower	Upper
117	100		
119	6.7	76.5	114.7#
121	0.0	25.0	37.6#

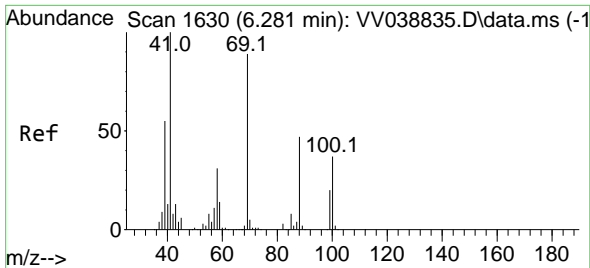


#41
 Methacrylonitrile
 Concen: 4.265 ug/l
 RT: 4.111 min Scan# 955
 Delta R.T. -0.042 min
 Lab File: VV038842.D
 Acq: 02 Jul 2025 15:55

Tgt Ion: 41 Resp: 102

Ion	Ratio	Lower	Upper
41	100		
39	0.0	43.8	65.8#
67	0.0	78.8	118.2#
52	0.0	30.3	45.5#

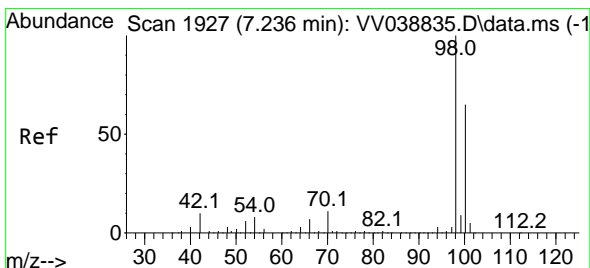
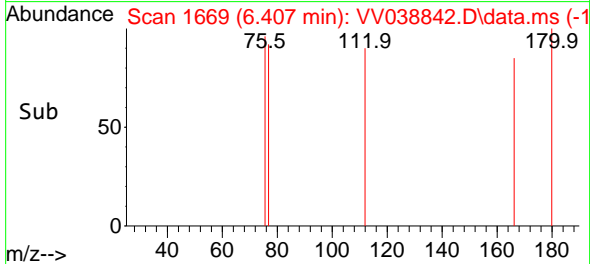
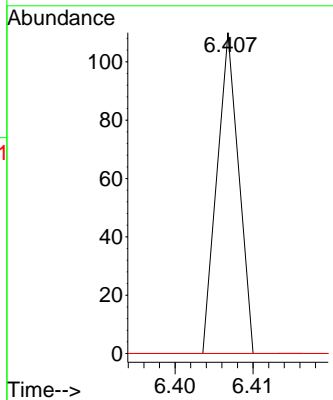
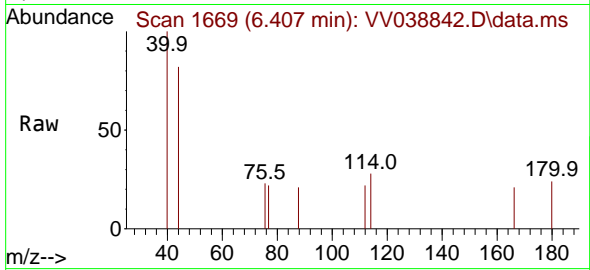




#49
 1,4-Dioxane
 Concen: 0.325 ug/l
 RT: 6.407 min Scan# 1669
 Delta R.T. 0.126 min
 Lab File: VV038842.D
 Acq: 02 Jul 2025 15:55

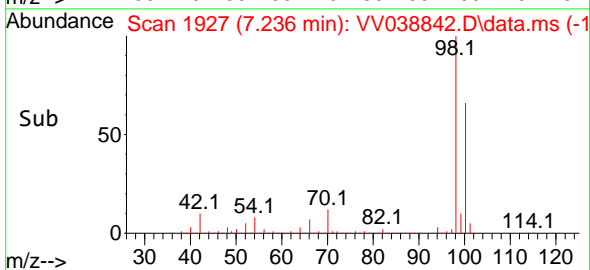
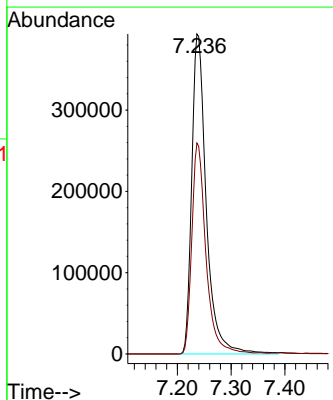
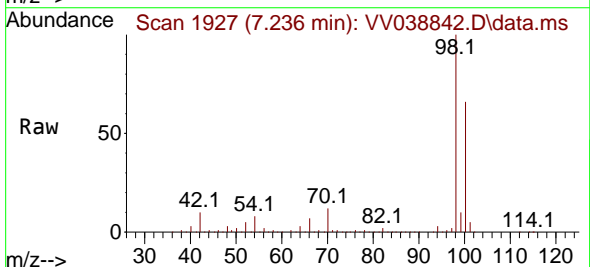
Instrument : MSVOA_V
 ClientSampleId : VV0702WBL04

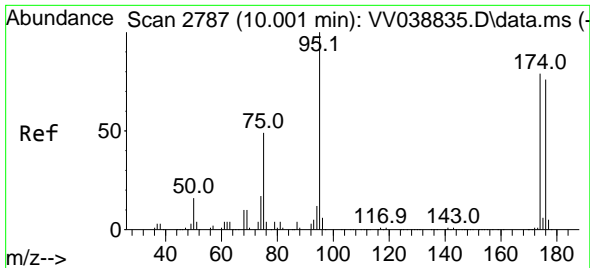
Tgt Ion: 88 Resp: 21
 Ion Ratio Lower Upper
 88 100
 43 0.0 25.2 37.8#
 58 0.0 52.1 78.1#



#50
 Toluene-d8
 Concen: 46.094 ug/l
 RT: 7.236 min Scan# 1927
 Delta R.T. 0.000 min
 Lab File: VV038842.D
 Acq: 02 Jul 2025 15:55

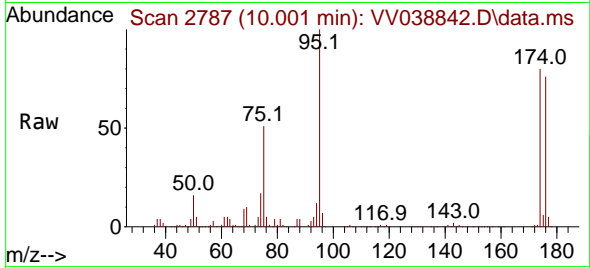
Tgt Ion: 98 Resp: 739118
 Ion Ratio Lower Upper
 98 100
 100 64.2 53.0 79.4



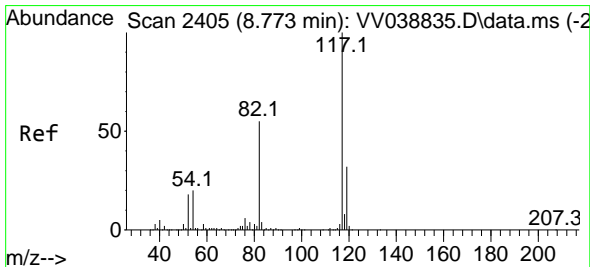
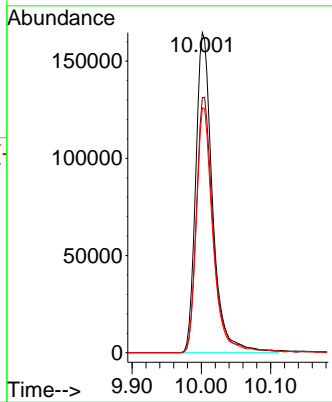
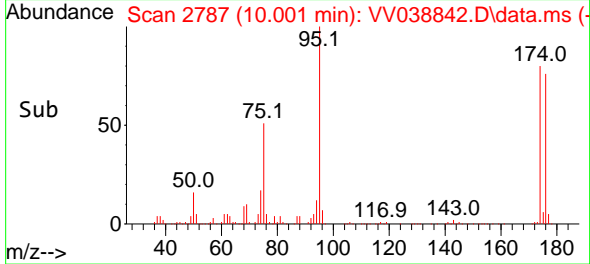


#62
 4-Bromofluorobenzene
 Concen: 42.857 ug/l
 RT: 10.001 min Scan# 21
 Delta R.T. 0.000 min
 Lab File: VV038842.D
 Acq: 02 Jul 2025 15:55

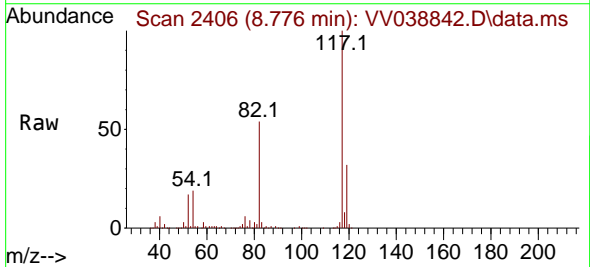
Instrument :
 MSVOA_V
 ClientSampleId :
 VV0702WBL04



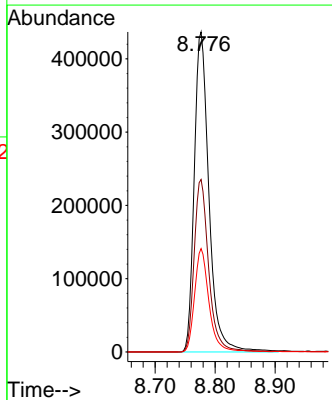
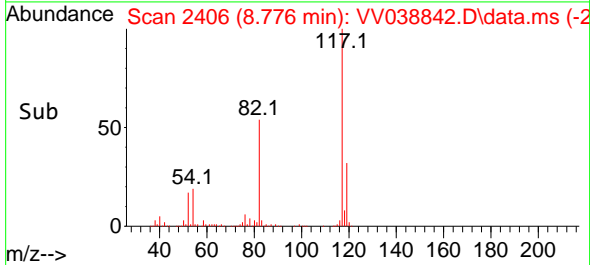
Tgt Ion: 95 Resp: 277644
 Ion Ratio Lower Upper
 95 100
 174 80.3 0.0 158.2
 176 74.9 0.0 154.4

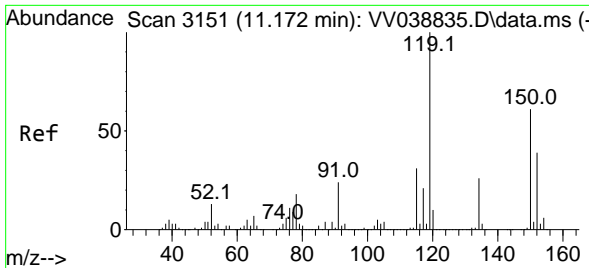


#63
 Chlorobenzene-d5
 Concen: 50.000 ug/l
 RT: 8.776 min Scan# 2406
 Delta R.T. 0.003 min
 Lab File: VV038842.D
 Acq: 02 Jul 2025 15:55



Tgt Ion: 117 Resp: 746449
 Ion Ratio Lower Upper
 117 100
 82 53.9 44.2 66.4
 119 32.3 25.5 38.3

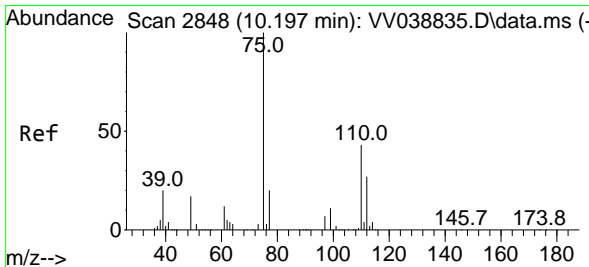
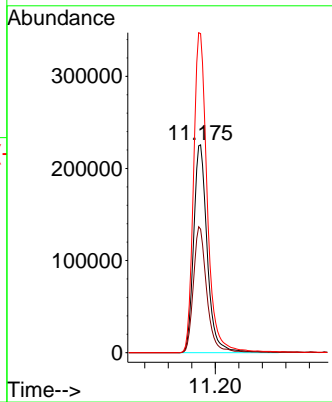
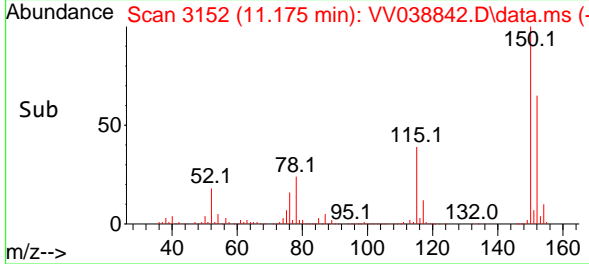
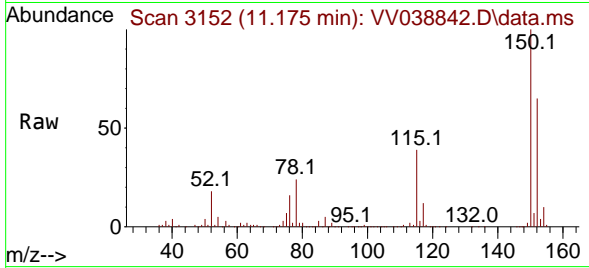




#72
 1,4-Dichlorobenzene-d4
 Concen: 50.000 ug/l
 RT: 11.175 min Scan# 3151
 Delta R.T. 0.003 min
 Lab File: VV038842.D
 Acq: 02 Jul 2025 15:55

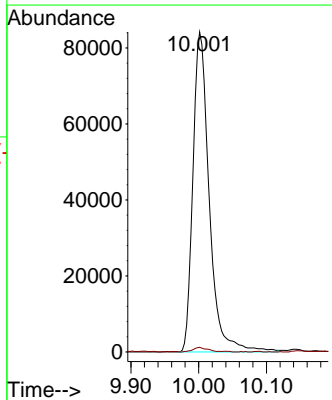
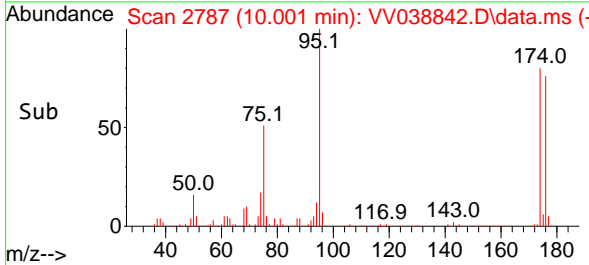
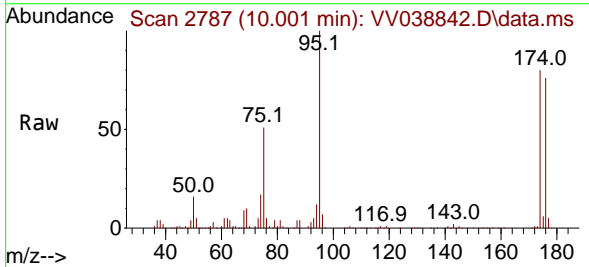
Instrument : MSVOA_V
 ClientSampleId : VV0702WBL04

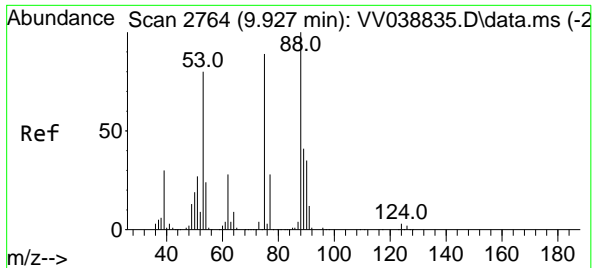
Tgt Ion	Resp	Lower	Upper
152	362598		
115	59.9	42.0	126.0
150	154.7	0.0	343.6



#76
 1,2,3-Trichloropropane
 Concen: 25.120 ug/l
 RT: 10.001 min Scan# 2787
 Delta R.T. -0.196 min
 Lab File: VV038842.D
 Acq: 02 Jul 2025 15:55

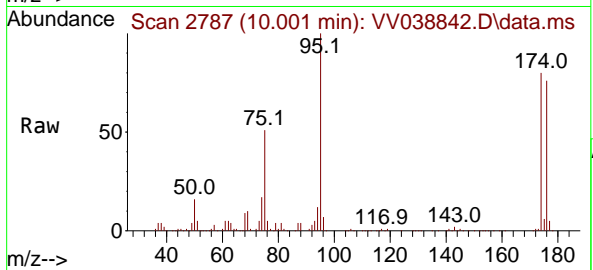
Tgt Ion	Resp	Lower	Upper
75	140929		
75	100		
77	1.3	11.7	35.1#





#81
 trans-1,4-Dichloro-2-butene
 Concen: 53.471 ug/l
 RT: 10.001 min Scan# 21
 Delta R.T. 0.074 min
 Lab File: VV038842.D
 Acq: 02 Jul 2025 15:55

Instrument : MSVOA_V
 ClientSampleId : VV0702WBL04



Tgt Ion: 75 Resp: 140929

Ion	Ratio	Lower	Upper
75	100		
53	0.3	71.2	106.8#
89	0.0	44.6	66.8#

