

Data Path : Z:\VOASRV\HPCHEM1\MSVOA V\DATA\VV070620\
 Data File : VV017362.D
 Acq On : 06 Jul 2020 19:40
 Operator : SY/MD
 Sample : L3168-12 200X
 Misc : 25.0mL/MSVOA V/WATER
 ALS Vial : 27 Sample Multiplier: 1

Instrument :
 MSVOA_V
 ClientSampleId :
 C0AJ8

Integration Parameters: rteint.p
 Integrator: RTE
 Smoothing : ON
 Sampling : 1
 Start Thrs: 0.1
 Stop Thrs : 0

Filtering: 5
 Min Area: 3 % of largest Peak
 Max Peaks: 100
 Peak Location: TOP

If leading or trailing edge < 100 prefer < Baseline drop else tangent >
 Peak separation: 5

Method : Z:\VOASRV\HPCHEM1\MSVOA_V\METHOD\SOMVTR061720WMA.M
 Title : TRACE VOA SOM01.0

Signal : TIC

peak #	R.T. min	first scan	max scan	last scan	PK TY	peak height	corr. area	corr. % max.	% of total
1	1.315	62	70	81	rVB	69457	73684	10.30%	1.457%
2	1.576	144	151	161	rBV	58348	64535	9.03%	1.276%
3	2.122	309	321	334	rBV	122631	180412	25.23%	3.568%
4	2.521	438	445	454	rBV6	5904	9317	1.30%	0.184%
5	3.962	874	893	894	rBV2	31434	61897	8.66%	1.224%
6	4.380	1007	1023	1041	rBV	99231	242602	33.93%	4.799%
7	5.071	1221	1238	1260	rBV2	216639	518764	72.55%	10.261%
8	5.643	1402	1416	1441	rBV	187312	387870	54.24%	7.672%
9	5.929	1495	1505	1510	rBV8	6312	10913	1.53%	0.216%
10	6.097	1540	1557	1573	rBV2	119740	248605	34.77%	4.917%
11	7.010	1828	1841	1858	rBV	61557	116731	16.32%	2.309%
12	7.338	1928	1943	1959	rBV	254348	442708	61.91%	8.756%
13	7.646	2028	2039	2059	rBV	37020	68470	9.58%	1.354%
14	7.997	2132	2148	2172	rBV	422122	715061	100.00%	14.143%
15	8.116	2175	2185	2213	rBV	203169	414073	57.91%	8.190%
16	8.450	2276	2289	2303	rBV3	15066	31467	4.40%	0.622%
17	8.875	2409	2421	2441	rBV	290106	474137	66.31%	9.378%
18	10.238	2835	2845	2858	rBV	82499	132488	18.53%	2.621%
19	11.270	3155	3166	3188	rBV	289226	455527	63.70%	9.010%
20	11.646	3272	3283	3303	rBV	255481	406517	56.85%	8.041%

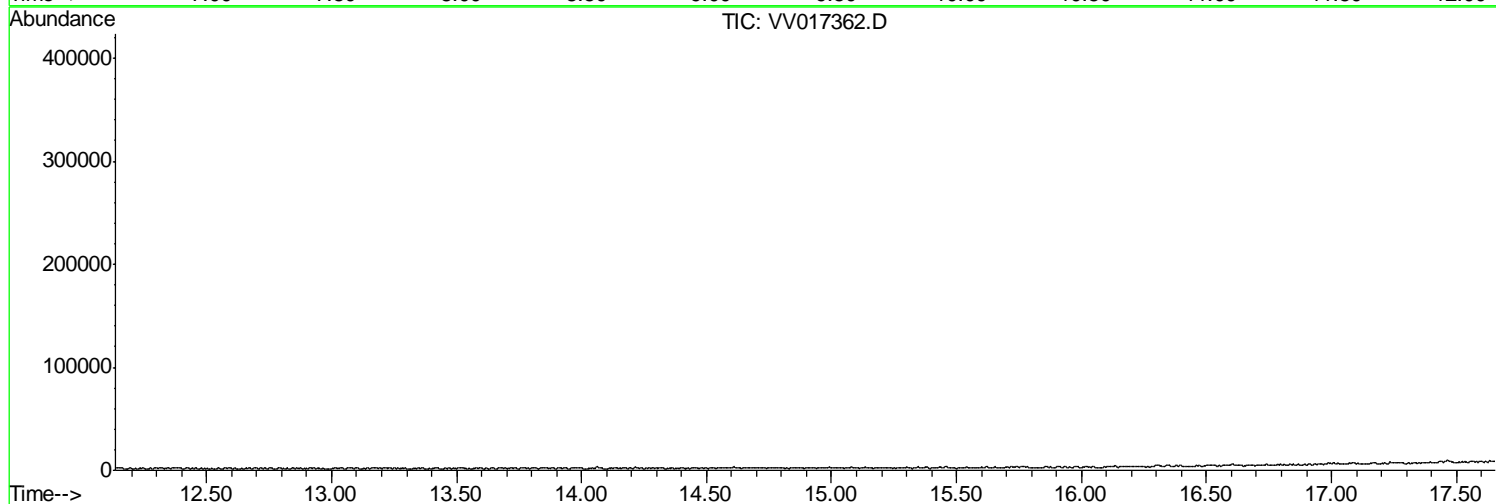
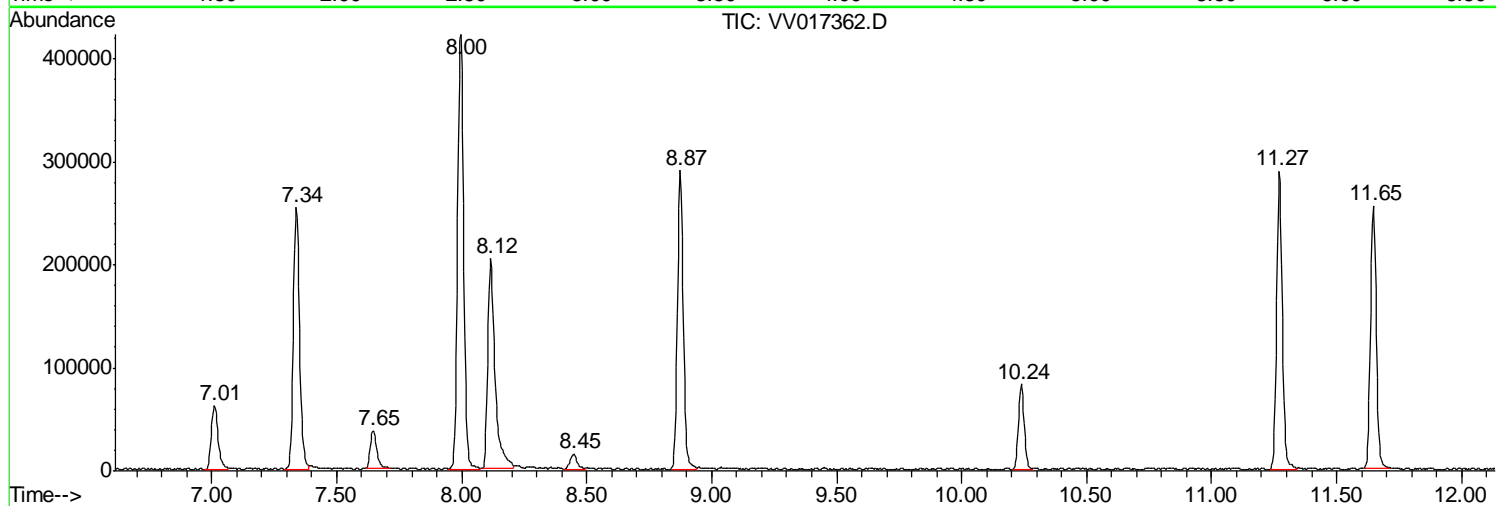
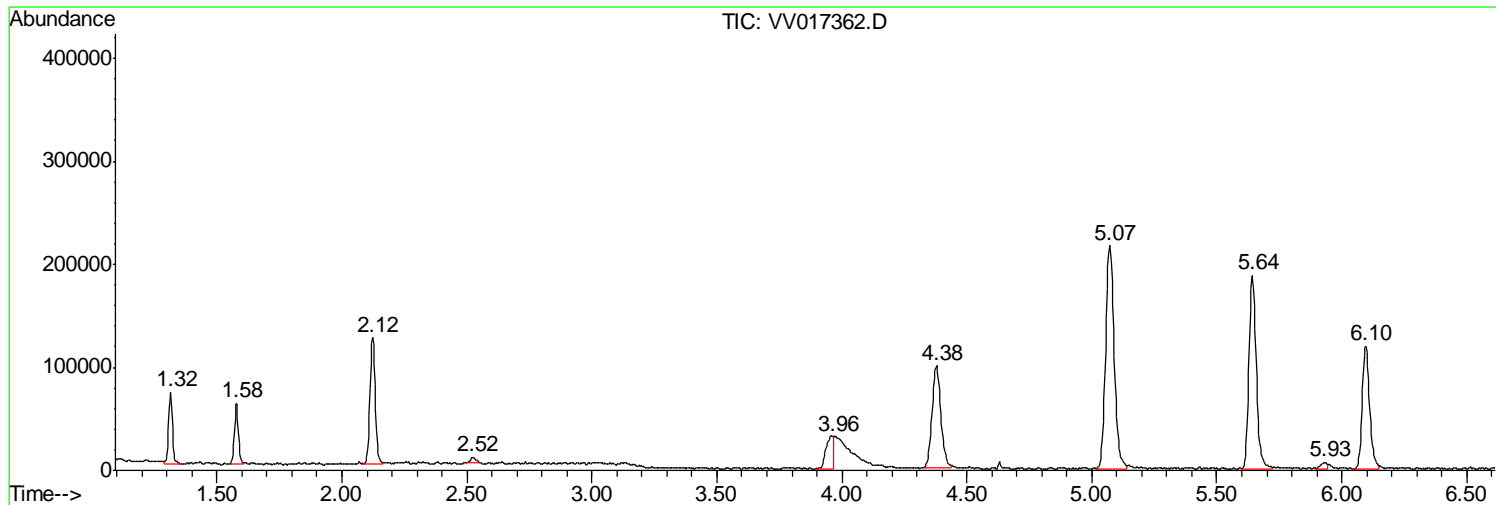
Sum of corrected areas: 5055778

Data Path : Z:\VOASRV\HPCHEM1\MSVOA V\DATA\VV070620\
Data File : VV017362.D
Acq On : 06 Jul 2020 19:40
Operator : SY/MD
Sample : L3168-12 200X
Misc : 25.0mL/MSVOA V/WATER
ALS Vial : 27 Sample Multiplier: 1

Instrument :
MSVOA_V
ClientSampled :
C0AJ8

Quant Method : Z:\VOASRV\HPCHEM1\MSVOA_V\METHOD\SOMVTR061720WMA.M
Quant Title : TRACE VOA SOM01.0

TIC Library : C:\DATABASE\NIST11.L
TIC Integration Parameters: LSCINT.P



Data Path : Z:\VOASRV\HPCHEM1\MSVOA_V\DATA\VV070620\
Data File : VV017362.D
Acq On : 06 Jul 2020 19:40
Operator : SY/MD
Sample : L3168-12 200X
Misc : 25.0mL/MSVOA_V/WATER
ALS Vial : 27 Sample Multiplier: 1

Instrument :
MSVOA_V
ClientSampleId :
C0AJ8

Quant Method : Z:\VOASRV\HPCHEM1\MSVOA_V\METHOD\SOMVTR061720WMA.M
Quant Title : TRACE VOA SOM01.0

TIC Library : C:\DATABASE\NIST11.L
TIC Integration Parameters: LSCINT.P

No Library Search Compounds Detected

Data Path : Z:\VOASRV\HPCHEM1\MSVOA_V\DATA\VV070620\
Data File : VV017362.D
Acq On : 06 Jul 2020 19:40
Operator : SY/MD
Sample : L3168-12 200X
Misc : 25.0mL/MSVOA_V/WATER
ALS Vial : 27 Sample Multiplier: 1

Instrument :
MSVOA_V
ClientSampleId :
C0AJ8

Quant Method : Z:\VOASRV\HPCHEM1\MSVOA_V\METHOD\SOMVTR061720WMA.M
Quant Title : TRACE VOA SOM01.0

TIC Library : C:\DATABASE\NIST11.L
TIC Integration Parameters: LSCINT.P

TIC Top Hit name	RT	EstConc	Units	Response	--Internal Standard--			
					#	RT	Resp	Conc
