

Data Path : Z:\voasrv\HPCHEM1\MSVOA\_V\Data\VV070623\  
 Data File : VV031647.D  
 Acq On : 06 Jul 2023 11:53  
 Operator : SY/MD  
 Sample : 03504-05ME  
 Misc : 4.55g/5.0mL/100uL/5.0mL/MSVOA\_V/MEOH  
 ALS Vial : 7 Sample Multiplier: 1

Instrument :  
 MSVOA\_V  
 ClientSampleId :  
 A46T5ME

Integration Parameters: LSCINT.P

Integrator: RTE  
 Smoothing : OFF Filtering: 5  
 Sampling : 1 Min Area: 0 % of largest Peak  
 Start Thrs: 0.2 Max Peaks: 100  
 Stop Thrs : 0 Peak Location: TOP

If leading or trailing edge < 100 prefer < Baseline drop else tangent >  
 Peak separation: 5

Method : Z:\voasrv\HPCHEM1\MSVOA\_V\Method\SFAMVLM061423WMA.M  
 Title : VOC Analysis

Signal : TIC: VV031647.D\data.ms

peak #	R.T. min	first scan	max scan	last scan	PK TY	peak height	corr. area	corr. % max.	% of total
1	1.278	68	74	91	rVB	50921	73574	9.32%	1.278%
2	2.044	302	312	330	rVB	126421	186617	23.63%	3.243%
3	2.378	408	416	429	rBV	20280	38849	4.92%	0.675%
4	2.738	526	528	529	rBV	436	147	0.02%	0.003%
5	2.799	542	547	548	rBV2	311	205	0.03%	0.004%
6	2.815	548	552	555	rVB2	445	352	0.04%	0.006%
7	2.835	555	558	561	rBV3	303	262	0.03%	0.005%
8	3.002	607	610	614	rVB3	369	229	0.03%	0.004%
9	3.021	614	616	617	rBV3	294	116	0.01%	0.002%
10	3.079	632	634	638	rVB2	444	275	0.03%	0.005%
11	3.114	643	645	649	rVB2	340	189	0.02%	0.003%
12	3.185	665	667	670	rBV2	159	99	0.01%	0.002%
13	3.310	702	706	708	rBV2	216	166	0.02%	0.003%
14	3.343	713	716	718	rBV	295	147	0.02%	0.003%
15	3.359	718	721	724	rVB	178	102	0.01%	0.002%
16	3.384	728	729	732	rBV	210	87	0.01%	0.002%
17	3.442	744	747	748	rBV	257	131	0.02%	0.002%
18	3.474	753	757	758	rBV2	230	159	0.02%	0.003%
19	3.484	758	760	763	rVV2	225	110	0.01%	0.002%
20	3.503	763	766	772	rVB3	235	192	0.02%	0.003%
21	3.590	791	793	796	rVB2	299	143	0.02%	0.002%
22	3.635	804	807	810	rVB2	151	99	0.01%	0.002%
23	3.651	810	812	815	rBV	238	168	0.02%	0.003%
24	3.690	822	824	827	rVB2	280	120	0.02%	0.002%
25	3.709	827	830	833	rBV	205	133	0.02%	0.002%
26	3.745	838	841	845	rVB	204	131	0.02%	0.002%
27	3.764	845	847	849	rBV	189	121	0.02%	0.002%
28	3.802	849	859	894	rBV2	49216	169510	21.47%	2.946%
29	4.253	983	999	1025	rBV	109541	288317	36.51%	5.010%
30	4.445	1057	1059	1062	rBV2	290	195	0.02%	0.003%
31	4.500	1074	1076	1079	rBV	300	166	0.02%	0.003%
32	4.542	1087	1089	1093	rBV2	217	163	0.02%	0.003%
33	4.568	1094	1097	1098	rBV	301	143	0.02%	0.002%
34	4.674	1126	1130	1132	rBV2	181	136	0.02%	0.002%
35	4.709	1136	1141	1145	rVV2	319	350	0.04%	0.006%
36	4.728	1145	1147	1152	rVB2	237	164	0.02%	0.003%

Data Path : Z:\voasrv\HPCHEM1\MSVOA\_V\Data\VW070623\  
 Data File : VW031647.D  
 Acq On : 06 Jul 2023 11:53  
 Operator : SY/MD  
 Sample : 03504-05ME  
 Misc : 4.55g/5.0mL/100uL/5.0mL/MSVOA\_V/MEOH  
 ALS Vial : 7 Sample Multiplier: 1

Instrument :  
 MSVOA\_V  
 ClientSampleId :  
 A46T5ME

Integration Parameters: LSCINT.P

Integrator: RTE  
 Smoothing : OFF Filtering: 5  
 Sampling : 1 Min Area: 0 % of largest Peak  
 Start Thrs: 0.2 Max Peaks: 100  
 Stop Thrs : 0 Peak Location: TOP

If leading or trailing edge < 100 prefer < Baseline drop else tangent >  
 Peak separation: 5

Method : Z:\voasrv\HPCHEM1\MSVOA\_V\Method\SFAMVLM061423WMA.M  
 Title : VOC Analysis

37	4.751	1152	1154	1158	rVB	215	119	0.02%	0.002%
38	4.780	1158	1163	1166	rBV2	229	199	0.03%	0.003%
39	4.825	1175	1177	1179	rBV	285	107	0.01%	0.002%
40	4.838	1179	1181	1182	rBV2	222	99	0.01%	0.002%
41	4.957	1203	1218	1252	rBV2	238892	624745	79.12%	10.856%
42	5.252	1306	1310	1313	rVB2	350	271	0.03%	0.005%
43	5.272	1313	1316	1319	rBV2	289	193	0.02%	0.003%
44	5.288	1319	1321	1327	rVB2	359	314	0.04%	0.005%
45	5.333	1331	1335	1336	rBV2	159	112	0.01%	0.002%
46	5.368	1342	1346	1347	rBV	185	119	0.02%	0.002%
47	5.471	1376	1378	1379	rBV	204	97	0.01%	0.002%
48	5.539	1386	1399	1425	rBV	242902	517276	65.51%	8.989%
49	5.831	1481	1490	1506	rVB6	5885	12390	1.57%	0.215%
50	5.995	1527	1541	1564	rBV	147760	313599	39.72%	5.449%
51	6.172	1594	1596	1598	rBV	410	208	0.03%	0.004%
52	6.288	1628	1632	1634	rBV	254	209	0.03%	0.004%
53	6.346	1647	1650	1655	rBV2	289	203	0.03%	0.004%
54	6.400	1664	1667	1670	rBV2	178	94	0.01%	0.002%
55	6.433	1674	1677	1678	rBV	231	144	0.02%	0.003%
56	6.510	1698	1701	1702	rBV	181	100	0.01%	0.002%
57	6.535	1704	1709	1711	rBV	284	241	0.03%	0.004%
58	6.548	1711	1713	1716	rVB	361	161	0.02%	0.003%
59	6.632	1733	1739	1742	rBV4	749	703	0.09%	0.012%
60	6.703	1759	1761	1764	rVB2	431	158	0.02%	0.003%
61	6.744	1772	1774	1781	rVB3	311	272	0.03%	0.005%
62	6.780	1781	1785	1786	rBV	290	178	0.02%	0.003%
63	6.789	1786	1788	1790	rVB	272	100	0.01%	0.002%
64	6.838	1799	1803	1806	rBV	206	206	0.03%	0.004%
65	6.918	1817	1828	1854	rBV	71403	143909	18.23%	2.501%
66	7.085	1876	1880	1881	rBV	300	153	0.02%	0.003%
67	7.117	1887	1890	1891	rBV2	203	109	0.01%	0.002%
68	7.249	1919	1931	1952	rBV	222203	401587	50.86%	6.978%
69	7.355	1961	1964	1968	rVB	7359	4464	0.57%	0.078%
70	7.561	2018	2028	2047	rBV	52420	103863	13.15%	1.805%
71	7.831	2110	2112	2116	rBV	233	175	0.02%	0.003%
72	8.043	2166	2178	2210	rBV	162801	382948	48.50%	6.654%
73	8.384	2273	2284	2296	rBV8	2513	5281	0.67%	0.092%
74	8.513	2320	2324	2326	rBV	152	104	0.01%	0.002%
75	8.580	2342	2345	2346	rBV	198	102	0.01%	0.002%
76	8.670	2370	2373	2374	rBV	222	108	0.01%	0.002%

Data Path : Z:\voasrv\HPCHEM1\MSVOA\_V\Data\VV070623\  
 Data File : VV031647.D  
 Acq On : 06 Jul 2023 11:53  
 Operator : SY/MD  
 Sample : 03504-05ME  
 Misc : 4.55g/5.0mL/100uL/5.0mL/MSVOA\_V/MEOH  
 ALS Vial : 7 Sample Multiplier: 1

Instrument :  
 MSVOA\_V  
 ClientSampleId :  
 A46T5ME

Integration Parameters: LSCINT.P

Integrator: RTE  
 Smoothing : OFF Filtering: 5  
 Sampling : 1 Min Area: 0 % of largest Peak  
 Start Thrs: 0.2 Max Peaks: 100  
 Stop Thrs : 0 Peak Location: TOP

If leading or trailing edge < 100 prefer < Baseline drop else tangent >  
 Peak separation: 5

Method : Z:\voasrv\HPCHEM1\MSVOA\_V\Method\SFAMVLM061423WMA.M  
 Title : VOC Analysis

77	8.709	2382	2385	2387	rVB	274	138	0.02%	0.002%
78	8.731	2389	2392	2394	rBV2	316	185	0.02%	0.003%
79	8.793	2399	2411	2440	rBV	371352	650635	82.40%	11.306%
80	9.008	2476	2478	2479	rBV	297	132	0.02%	0.002%
81	9.098	2501	2506	2512	rVB3	812	951	0.12%	0.017%
82	9.156	2522	2524	2528	rVB	329	204	0.03%	0.004%
83	9.217	2541	2543	2549	rVB2	480	348	0.04%	0.006%
84	9.516	2634	2636	2637	rBV2	266	116	0.01%	0.002%
85	9.561	2645	2650	2653	rBV2	380	366	0.05%	0.006%
86	9.587	2656	2658	2662	rBV	235	214	0.03%	0.004%
87	9.619	2666	2668	2670	rBV	200	122	0.02%	0.002%
88	9.712	2693	2697	2698	rBV2	794	558	0.07%	0.010%
89	9.921	2760	2762	2769	rVB	400	331	0.04%	0.006%
90	10.085	2809	2813	2814	rBV	340	208	0.03%	0.004%
91	10.162	2825	2837	2852	rBV	271634	438350	55.52%	7.617%
92	10.259	2866	2867	2870	rBV	482	285	0.04%	0.005%
93	10.555	2953	2959	2960	rBV	670	496	0.06%	0.009%
94	10.802	3033	3036	3038	rBV	406	288	0.04%	0.005%
95	11.194	3146	3158	3184	rBV	503396	789594	100.00%	13.721%
96	11.567	3263	3274	3299	rBV	376179	592550	75.04%	10.297%
97	11.760	3331	3334	3338	rBV2	679	384	0.05%	0.007%
98	12.362	3519	3521	3523	rBV3	484	197	0.02%	0.003%
99	12.670	3614	3617	3618	rBV3	459	211	0.03%	0.004%
100	13.284	3805	3808	3812	rBV4	654	423	0.05%	0.007%

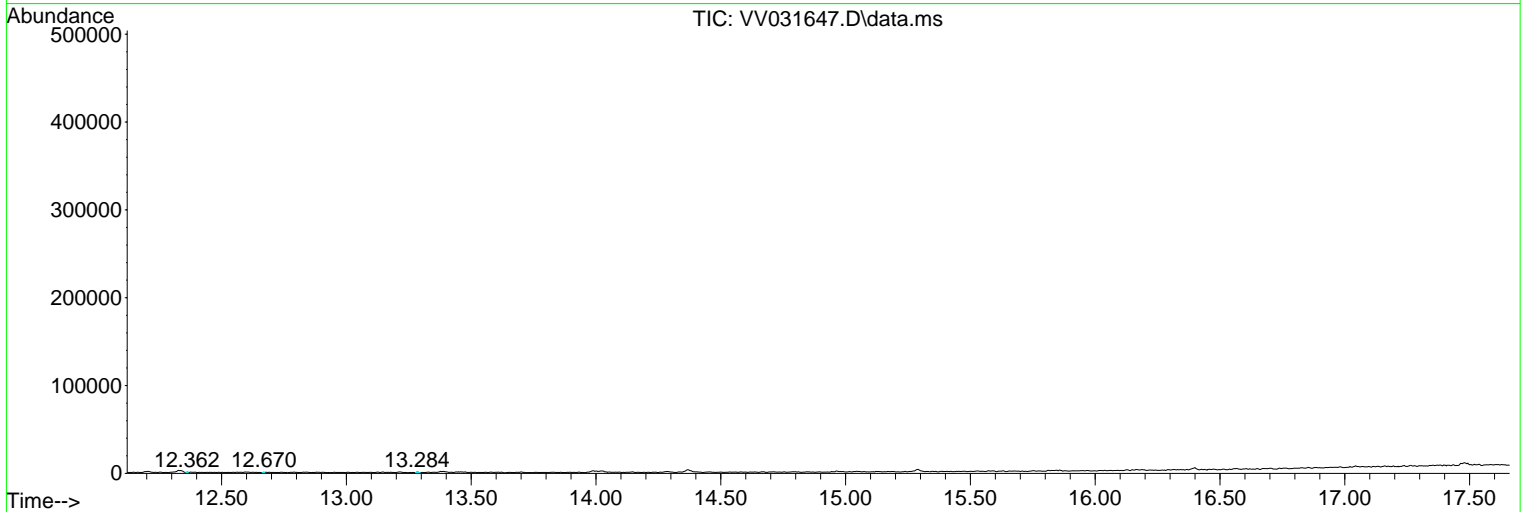
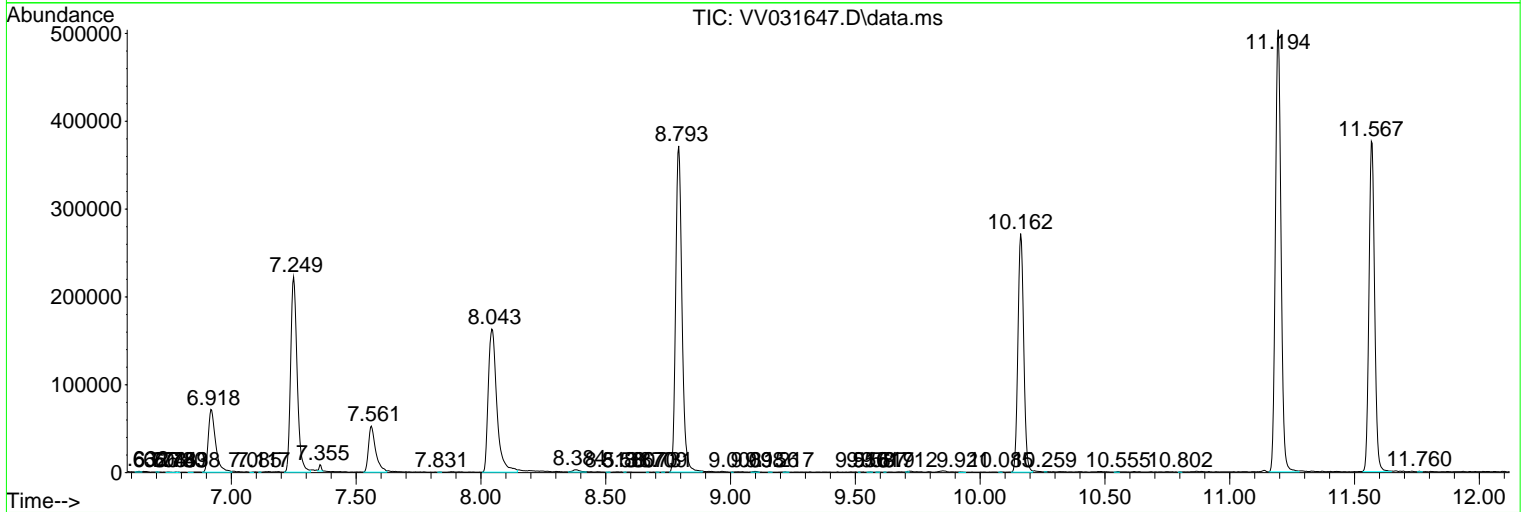
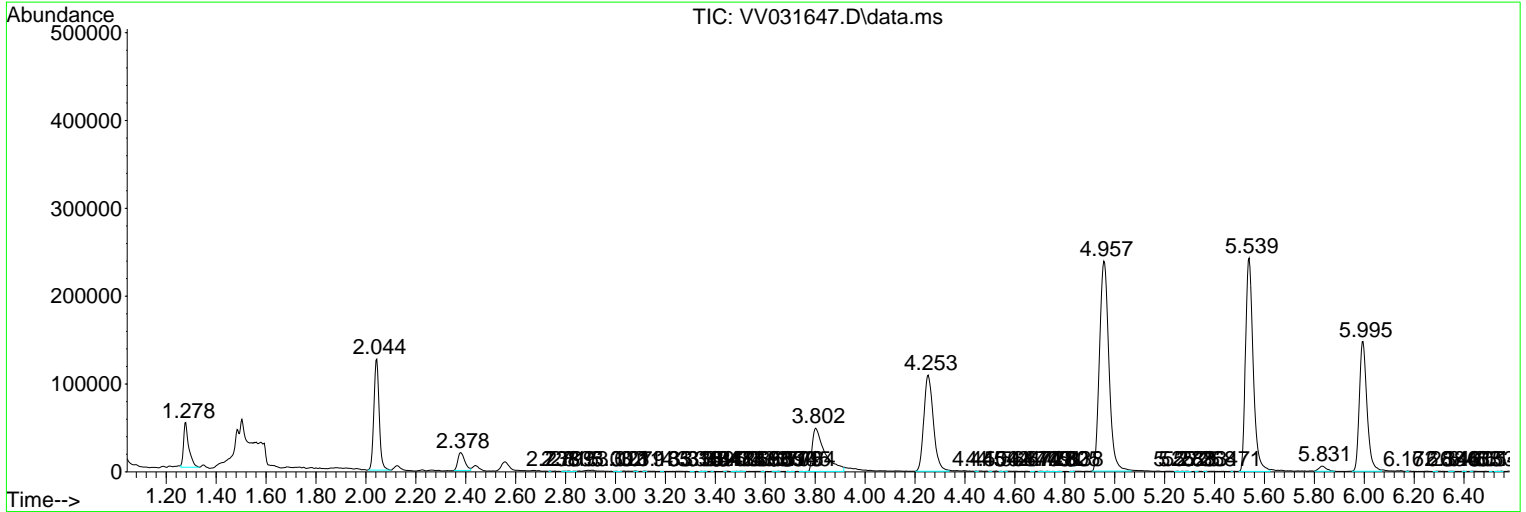
Sum of corrected areas: 5754773

Data Path : Z:\voasrv\HPCHEM1\MSVOA\_V\Data\VV070623\  
 Data File : VV031647.D  
 Acq On : 06 Jul 2023 11:53  
 Operator : SY/MD  
 Sample : 03504-05ME  
 Misc : 4.55g/5.0mL/100uL/5.0mL/MSVOA\_V/MEOH  
 ALS Vial : 7 Sample Multiplier: 1

Instrument :  
 MSVOA\_V  
 ClientSampleId :  
 A46T5ME

Quant Method : Z:\voasrv\HPCHEM1\MSVOA\_V\Method\SFAMVLM061423WMA.M  
 Quant Title : VOC Analysis

TIC Library : C:\Database\NIST20.L  
 TIC Integration Parameters: LSCINT.P



Library Search Compound Report

Data Path : Z:\voasrv\HPCHEM1\MSVOA\_V\Data\VV070623\  
Data File : VV031647.D  
Acq On : 06 Jul 2023 11:53  
Operator : SY/MD  
Sample : 03504-05ME  
Misc : 4.55g/5.0mL/100uL/5.0mL/MSVOA\_V/MEOH  
ALS Vial : 7 Sample Multiplier: 1

Instrument :  
MSVOA\_V  
ClientSampleId :  
A46T5ME

Quant Method : Z:\voasrv\HPCHEM1\MSVOA\_V\Method\SFAMVLM061423WMA.M  
Quant Title : VOC Analysis

TIC Library : C:\Database\NIST20.L  
TIC Integration Parameters: LSCINT.P

No Library Search Compounds Detected

\*\*\*\*\*

Data Path : Z:\voasrv\HPCHEM1\MSVOA\_V\Data\VV070623\  
Data File : VV031647.D  
Acq On : 06 Jul 2023 11:53  
Operator : SY/MD  
Sample : 03504-05ME  
Misc : 4.55g/5.0mL/100uL/5.0mL/MSVOA\_V/MEOH  
ALS Vial : 7 Sample Multiplier: 1

Instrument :  
MSVOA\_V  
ClientSampleId :  
A46T5ME

Quant Method : Z:\voasrv\HPCHEM1\MSVOA\_V\Method\SFAMVLM061423WMA.M  
Quant Title : VOC Analysis

TIC Library : C:\Database\NIST20.L  
TIC Integration Parameters: LSCINT.P

TIC Top Hit name	RT	EstConc	Units	Response	--Internal Standard--			
					#	RT	Resp	Conc

---