

Data Path : Z:\VOASRV\HPCHEM1\MSVOA V\DATA\VV071018\
 Data File : VV006567.D
 Acq On : 10 Jul 2018 13:53
 Operator : SY/MD
 Sample : VV0710WBL01
 Misc : 25 mL/MSVOA V/WATER
 ALS Vial : 3 Sample Multiplier: 1

Instrument :
 MSVOA_V
 ClientSampleId :
 VBLK62

Integration Parameters: rteint.p
 Integrator: RTE
 Smoothing : ON
 Sampling : 1
 Start Thrs: 0.1
 Stop Thrs : 0

Filtering: 5
 Min Area: 3 % of largest Peak
 Max Peaks: 100
 Peak Location: TOP

If leading or trailing edge < 100 prefer < Baseline drop else tangent >
 Peak separation: 5

Method : Z:\VOASRV\HPCHEM1\MSVOA_V\METHOD\SOMVTR070718WMA.M
 Title : TRACE VOA SOM01.0

Signal : TIC

peak #	R.T. min	first scan	max scan	last scan	PK TY	peak height	corr. area	corr. % max.	% of total
1	1.029	26	43	68	rBV	2307755	2639976	100.00%	25.417%
2	1.318	125	133	154	rVB	96872	131748	4.99%	1.268%
3	1.585	210	216	237	rVB	98903	115904	4.39%	1.116%
4	2.131	377	386	399	rBV	202348	281951	10.68%	2.715%
5	3.967	939	957	1006	rBV	121893	400188	15.16%	3.853%
6	4.408	1075	1094	1114	rBV	156132	371857	14.09%	3.580%
7	5.099	1291	1309	1332	rBV2	378522	861276	32.62%	8.292%
8	5.668	1470	1486	1505	rBV	362025	700701	26.54%	6.746%
9	6.125	1610	1628	1649	rBV	210647	417364	15.81%	4.018%
10	7.035	1899	1911	1928	rBV2	98597	173623	6.58%	1.672%
11	7.363	1999	2013	2030	rBV	410193	709992	26.89%	6.836%
12	7.668	2097	2108	2126	rBV	59124	99103	3.75%	0.954%
13	8.144	2242	2256	2298	rBV2	526652	1017313	38.53%	9.795%
14	8.900	2476	2491	2517	rBV	504075	810905	30.72%	7.807%
15	10.266	2904	2916	2936	rVB	170306	264803	10.03%	2.549%
16	11.301	3225	3238	3265	rVB	464130	734944	27.84%	7.076%
17	11.678	3343	3355	3378	rBV	414758	654925	24.81%	6.305%

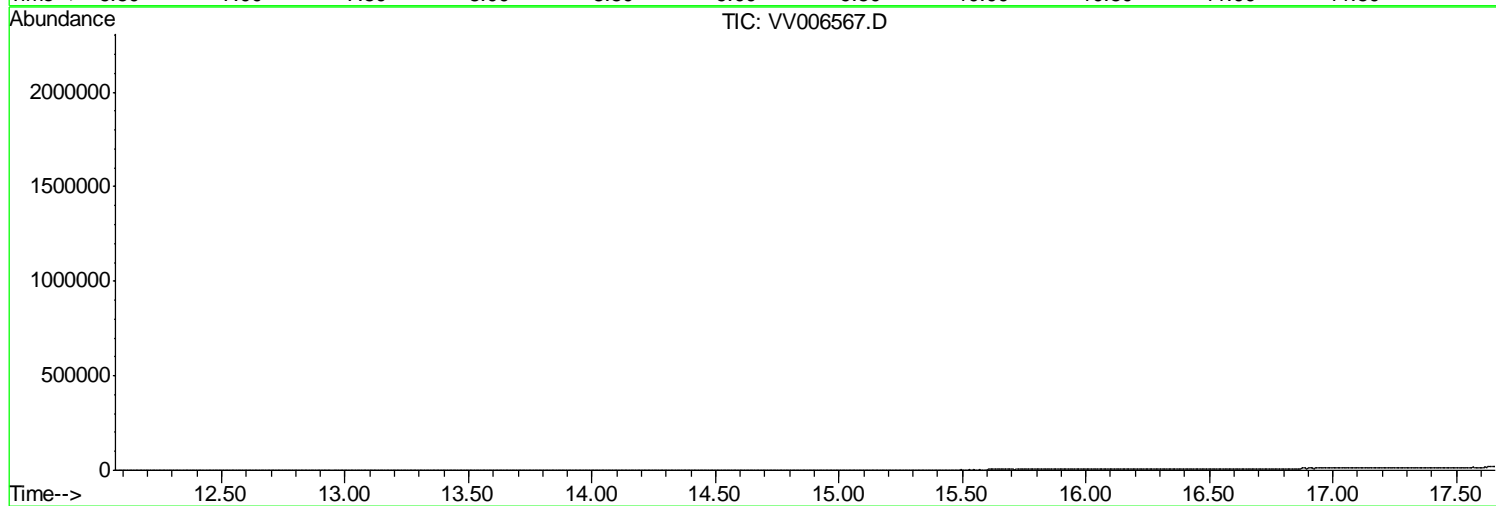
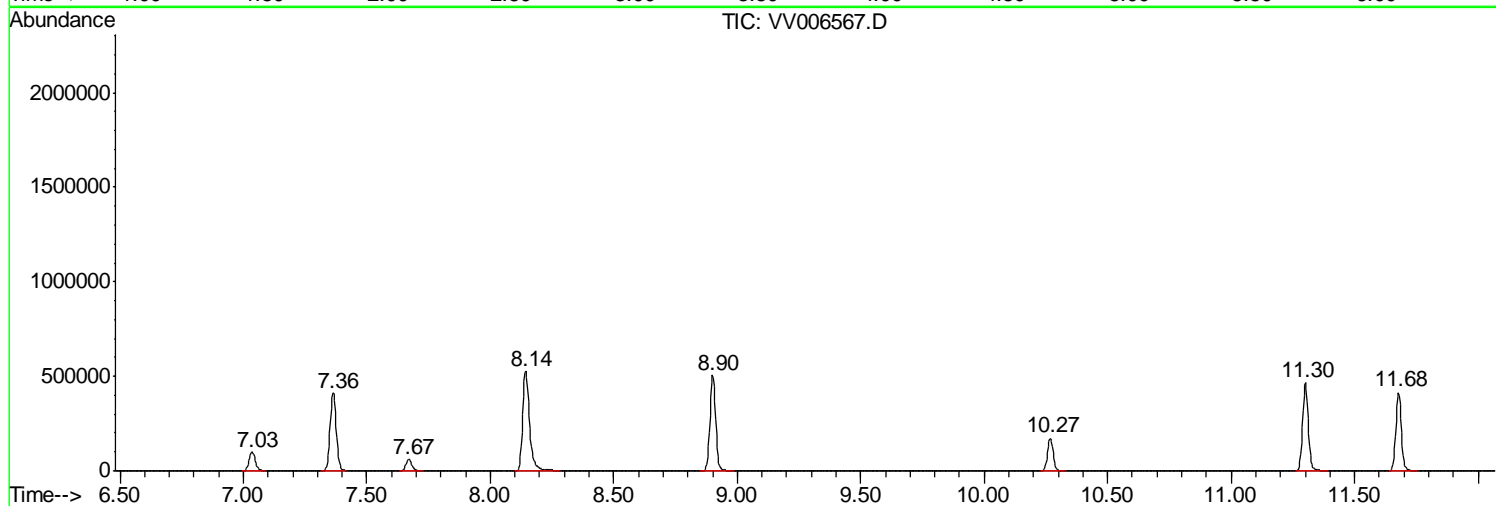
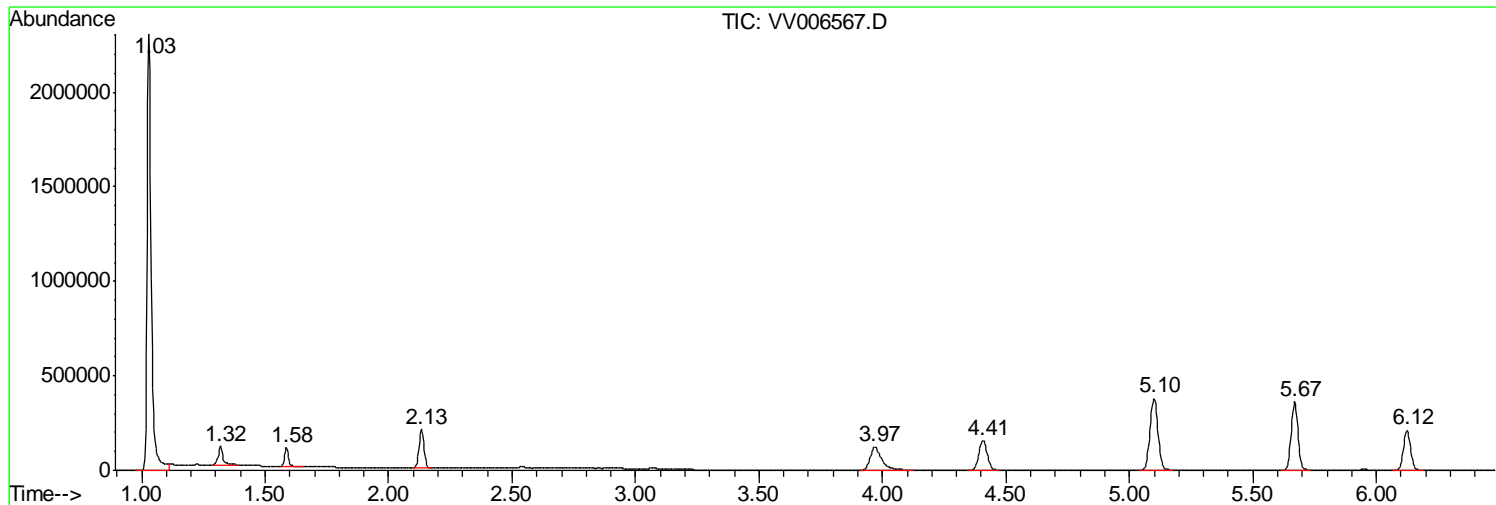
Sum of corrected areas: 10386573

Data Path : Z:\VOASRV\HPCHEM1\MSVOA V\DATA\VV071018\
Data File : VV006567.D
Acq On : 10 Jul 2018 13:53
Operator : SY/MD
Sample : VV0710WBL01
Misc : 25 mL/MSVOA V/WATER
ALS Vial : 3 Sample Multiplier: 1

Instrument :
MSVOA_V
ClientSampled :
VBLK62

Quant Method : Z:\VOASRV\HPCHEM1\MSVOA_V\METHOD\SOMVTR070718WMA.M
Quant Title : TRACE VOA SOM01.0

TIC Library : C:\DATABASE\NIST11.L
TIC Integration Parameters: LSCINT.P



Data Path : Z:\VOASRV\HPCHEM1\MSVOA_V\DATA\VV071018\
Data File : VV006567.D
Acq On : 10 Jul 2018 13:53
Operator : SY/MD
Sample : VV0710WBL01
Misc : 25 mL/MSVOA_V/WATER
ALS Vial : 3 Sample Multiplier: 1

Instrument :
MSVOA_V
ClientSampleId :
VBLK62

Quant Method : Z:\VOASRV\HPCHEM1\MSVOA_V\METHOD\SOMVTR070718WMA.M
Quant Title : TRACE VOA SOM01.0

TIC Library : C:\DATABASE\NIST11.L
TIC Integration Parameters: LSCINT.P

No Library Search Compounds Detected

Data Path : Z:\VOASRV\HPCHEM1\MSVOA_V\DATA\VV071018\
Data File : VV006567.D
Acq On : 10 Jul 2018 13:53
Operator : SY/MD
Sample : VV0710WBL01
Misc : 25 mL/MSVOA_V/WATER
ALS Vial : 3 Sample Multiplier: 1

Instrument :
MSVOA_V
ClientSampleId :
VBLK62

Quant Method : Z:\VOASRV\HPCHEM1\MSVOA_V\METHOD\SOMVTR070718WMA.M
Quant Title : TRACE VOA SOM01.0

TIC Library : C:\DATABASE\NIST11.L
TIC Integration Parameters: LSCINT.P

TIC Top Hit name	RT	EstConc	Units	Response	--Internal Standard--			
					#	RT	Resp	Conc
