

Data Path : Z:\voasrv\HPCHEM1\MSVOA_V\Data\VW071123\
 Data File : VW031673.D
 Acq On : 11 Jul 2023 11:43
 Operator : SY/MD
 Sample : VSTD10042
 Misc : 5.0mL/MSVOA_V/WATER
 ALS Vial : 5 Sample Multiplier: 1

Instrument :
 MSVOA_V
 ClientSampleId :
 VSTD100242

Quant Time: Jul 12 07:26:54 2023
 Quant Method : Z:\voasrv\HPCHEM1\MSVOA_V\Method\SFAMVLM071123WMA.M
 Quant Title : VOC Analysis
 QLast Update : Wed Jul 12 07:24:21 2023
 Response via : Initial Calibration

| Compound | R.T. | QIon | Response | Conc | Units | Dev(Min) | |
|-------------------------------|--------|------|----------|---------|-------|----------|--------|
| Internal Standards | | | | | | | |
| 1) 1,4-Difluorobenzene | 5.539 | 114 | 327193 | 50.000 | ug/L | 0.00 | |
| 28) Chlorobenzene-d5 | 8.789 | 117 | 329112 | 50.000 | ug/L | 0.00 | |
| 58) 1,4-Dichlorobenzene-d4 | 11.191 | 152 | 207707 | 50.000 | ug/L | 0.00 | |
| System Monitoring Compounds | | | | | | | |
| 4) Vinyl Chloride-d3 | 1.278 | 65 | 307483 | 133.445 | ug/L | 0.00 | |
| 7) Chloroethane-d5 | 1.529 | 69 | 216748 | 109.207 | ug/L | 0.00 | |
| 11) 1,1-Dichloroethene-d2 | 2.060 | 65 | 140358 | 120.214 | ug/L | 0.00 | |
| 21) 2-Butanone-d5 | 3.789 | 46 | 375531 | 212.167 | ug/L | 0.00 | |
| 24) Chloroform-d | 4.256 | 84 | 560905 | 100.776 | ug/L | 0.00 | |
| 26) 1,2-Dichloroethane-d4 | 4.944 | 65 | 362454 | 105.509 | ug/L | 0.00 | |
| 32) Benzene-d6 | 4.966 | 84 | 1085448 | 116.194 | ug/L | 0.00 | |
| 36) 1,2-Dichloropropane-d6 | 5.992 | 67 | 340634 | 103.726 | ug/L | 0.00 | |
| 41) Toluene-d8 | 7.249 | 98 | 1047888 | 121.709 | ug/L | 0.00 | |
| 43) trans-1,3-Dichloroprop... | 7.555 | 79 | 182256 | 114.980 | ug/L | 0.00 | |
| 47) 2-Hexanone-d5 | 8.030 | 63 | 305878 | 242.006 | ug/L | 0.00 | |
| 56) 1,1,2,2-Tetrachloroeth... | 10.159 | 84 | 533357 | 108.197 | ug/L | 0.00 | |
| 66) 1,2-Dichlorobenzene-d4 | 11.567 | 152 | 395273 | 100.671 | ug/L | 0.00 | |
| Target Compounds | | | | | | | |
| | | | | | | | Qvalue |
| 2) Dichlorodifluoromethane | 1.105 | 85 | 421276 | 117.405 | ug/L | | 99 |
| 3) Chloromethane | 1.217 | 50 | 427085 | 125.717 | ug/L | | 98 |
| 5) Vinyl chloride | 1.285 | 62 | 411377 | 122.662 | ug/L | | 99 |
| 6) Bromomethane | 1.487 | 94 | 217644 | 101.105 | ug/L | | 99 |
| 8) Chloroethane | 1.548 | 64 | 219344 | 101.998 | ug/L | | 99 |
| 9) Trichlorofluoromethane | 1.712 | 101 | 570517 | 103.738 | ug/L | | 99 |
| 10) 1,1,2-Trichloro-1,2,2-... | 2.069 | 101 | 336258 | 112.485 | ug/L | | 97 |
| 12) 1,1-Dichloroethene | 2.072 | 96 | 298956 | 119.415 | ug/L | | 92 |
| 13) Acetone | 2.121 | 43 | 382030 | 218.477 | ug/L | | 98 |
| 14) Carbon disulfide | 2.243 | 76 | 937161 | 122.655 | ug/L | | 99 |
| 15) Methyl Acetate | 2.375 | 43 | 362147 | 121.799 | ug/L | | 97 |
| 16) Methylene chloride | 2.449 | 84 | 332794 | 107.478 | ug/L | | 97 |
| 17) trans-1,2-Dichloroethene | 2.696 | 96 | 299805 | 116.510 | ug/L | | 97 |
| 18) Methyl tert-butyl Ether | 2.706 | 73 | 976373 | 116.038 | ug/L | | 99 |
| 19) 1,1-Dichloroethane | 3.117 | 63 | 578336 | 104.987 | ug/L | | 97 |
| 20) cis-1,2-Dichloroethene | 3.818 | 96 | 310342 | 112.738 | ug/L | | 98 |
| 22) 2-Butanone | 3.870 | 43 | 476978 | 215.491 | ug/L | | 99 |
| 23) Bromochloromethane | 4.153 | 128 | 163279 | 108.083 | ug/L | | 97 |
| 25) Chloroform | 4.281 | 83 | 584753 | 102.029 | ug/L | | 99 |
| 27) 1,2-Dichloroethane | 5.043 | 62 | 482823 | 109.918 | ug/L | | 99 |
| 29) Cyclohexane | 4.590 | 56 | 503443 | 118.027 | ug/L | | 98 |
| 30) 1,1,1-Trichloroethane | 4.519 | 97 | 533567 | 101.551 | ug/L | | 100 |
| 31) Carbon tetrachloride | 4.741 | 117 | 484663 | 104.150 | ug/L | | 98 |
| 33) Benzene | 5.014 | 78 | 1279519 | 116.757 | ug/L | | 100 |
| 34) Trichloroethene | 5.838 | 95 | 343116 | 115.717 | ug/L | | 97 |
| 35) Methylcyclohexane | 6.056 | 83 | 510177 | 118.960 | ug/L | | 98 |
| 37) 1,2-Dichloropropane | 6.098 | 63 | 366524 | 114.583 | ug/L | | 98 |
| 38) Bromodichloromethane | 6.436 | 83 | 484067 | 111.235 | ug/L | | 99 |
| 39) cis-1,3-Dichloropropene | 6.956 | 75 | 581701 | 123.080 | ug/L | | 99 |
| 40) 4-Methyl-2-pentanone | 7.162 | 43 | 994613 | 265.134 | ug/L | | 99 |
| 42) Toluene | 7.320 | 91 | 1398855 | 122.763 | ug/L | | 99 |
| 44) trans-1,3-Dichloropropene | 7.583 | 75 | 562899 | 121.941 | ug/L | | 99 |

Data Path : Z:\voasrv\HPCHEM1\MSVOA_V\Data\VW071123\
 Data File : VW031673.D
 Acq On : 11 Jul 2023 11:43
 Operator : SY/MD
 Sample : VSTD10042
 Misc : 5.0mL/MSVOA_V/WATER
 ALS Vial : 5 Sample Multiplier: 1

Instrument :
 MSVOA_V
 ClientSampleId :
 VSTD100242

Quant Time: Jul 12 07:26:54 2023
 Quant Method : Z:\voasrv\HPCHEM1\MSVOA_V\Method\SFAMVLM071123WMA.M
 Quant Title : VOC Analysis
 QLast Update : Wed Jul 12 07:24:21 2023
 Response via : Initial Calibration

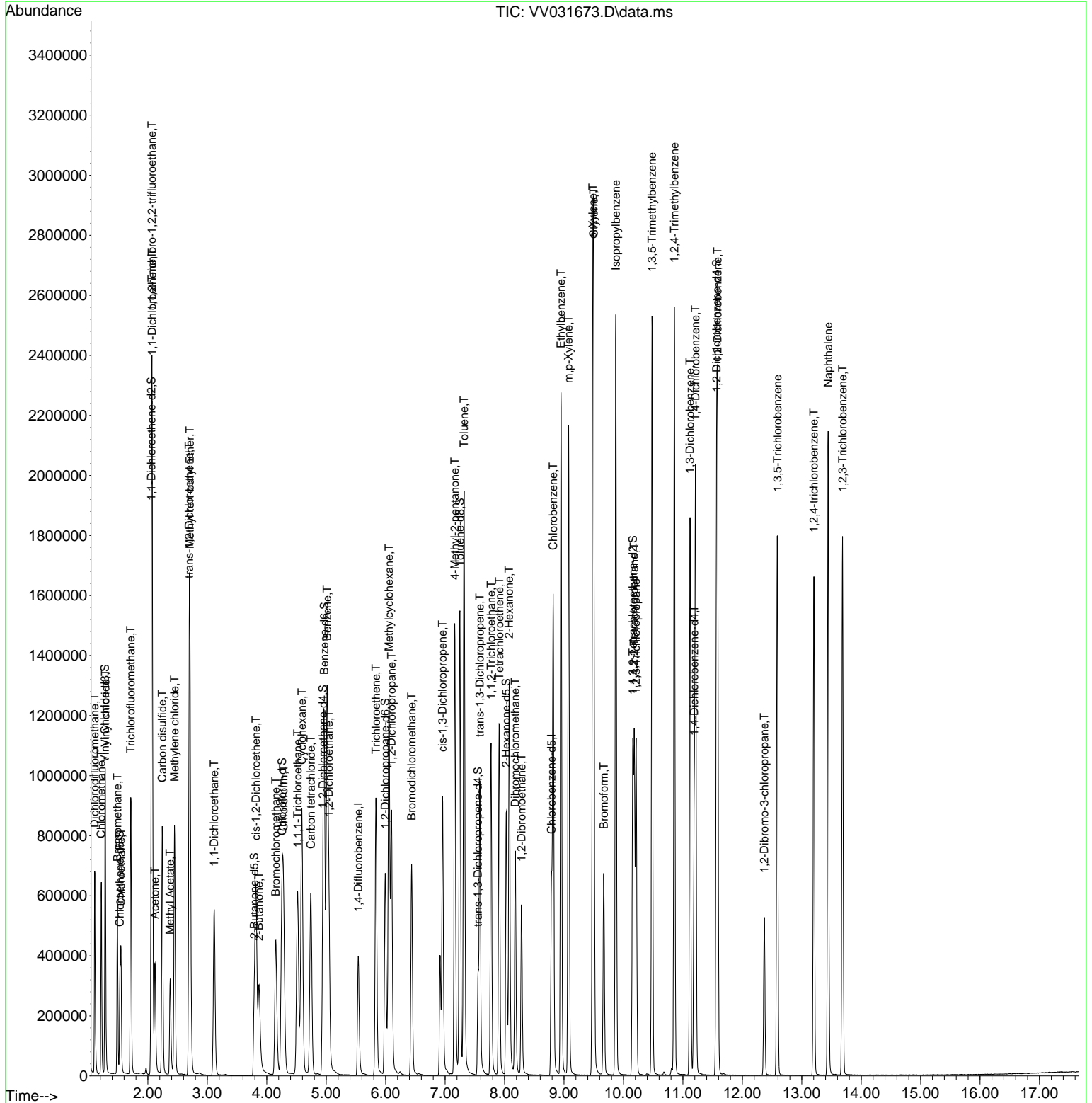
| Compound | R.T. | QIon | Response | Conc | Units | Dev(Min) |
|-------------------------------|--------|------|----------|---------|--------|----------|
| 45) 1,1,2-Trichloroethane | 7.773 | 97 | 343138 | 112.515 | ug/L | 98 |
| 46) Tetrachloroethene | 7.911 | 164 | 259756 | 112.258 | ug/L | 98 |
| 48) 2-Hexanone | 8.079 | 43 | 812542 | 267.223 | ug/L | 99 |
| 49) Dibromochloromethane | 8.181 | 129 | 376433 | 110.783 | ug/L | 96 |
| 50) 1,2-Dibromoethane | 8.288 | 107 | 375229 | 115.186 | ug/L | 99 |
| 51) Chlorobenzene | 8.818 | 112 | 821302 | 109.055 | ug/L | 99 |
| 52) Ethylbenzene | 8.950 | 91 | 1535573 | 121.907 | ug/L | 98 |
| 53) m,p-Xylene | 9.079 | 106 | 572647 | 123.044 | ug/L | 96 |
| 54) o-Xylene | 9.484 | 106 | 524480 | 119.795 | ug/L | 96 |
| 55) Styrene | 9.500 | 104 | 977972 | 123.470 | ug/L | 100 |
| 57) 1,1,2,2-Tetrachloroethane | 10.181 | 83 | 544369 | 110.807 | ug/L | 98 |
| 59) Bromoform | 9.670 | 173 | 294598 | 113.440 | ug/L # | 96 |
| 60) Isopropylbenzene | 9.873 | 105 | 1520589 | 116.263 | ug/L | 99 |
| 61) 1,2,3-Trichloropropane | 10.214 | 75 | 456582 | 110.845 | ug/L | 98 |
| 62) 1,3,5-Trimethylbenzene | 10.480 | 105 | 1264170 | 117.470 | ug/L | 99 |
| 63) 1,2,4-Trimethylbenzene | 10.857 | 105 | 1272525 | 124.719 | ug/L | 100 |
| 64) 1,3-Dichlorobenzene | 11.120 | 146 | 700582 | 105.589 | ug/L | 97 |
| 65) 1,4-Dichlorobenzene | 11.214 | 146 | 736803 | 103.945 | ug/L | 99 |
| 67) 1,2-Dichlorobenzene | 11.583 | 146 | 719894 | 107.206 | ug/L | 99 |
| 68) 1,2-Dibromo-3-chloropr... | 12.371 | 75 | 138923 | 112.494 | ug/L | 99 |
| 69) 1,3,5-Trichlorobenzene | 12.590 | 180 | 539159 | 106.685 | ug/L | 99 |
| 70) 1,2,4-trichlorobenzene | 13.204 | 180 | 485012 | 109.941 | ug/L | 100 |
| 71) Naphthalene | 13.445 | 128 | 1530797 | 134.937 | ug/L | 100 |
| 72) 1,2,3-Trichlorobenzene | 13.686 | 180 | 502349 | 109.643 | ug/L | 100 |

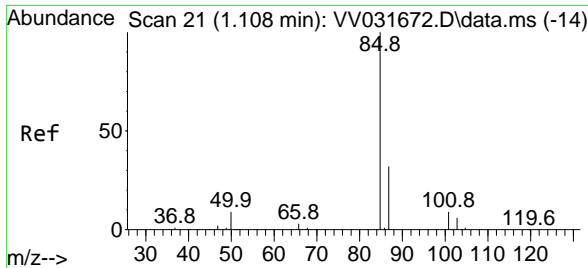
(#) = qualifier out of range (m) = manual integration (+) = signals summed

Data Path : Z:\voasrv\HPCHEM1\MSVOA_V\Data\VV071123\
 Data File : VV031673.D
 Acq On : 11 Jul 2023 11:43
 Operator : SY/MD
 Sample : VSTD10042
 Misc : 5.0mL/MSVOA_V/WATER
 ALS Vial : 5 Sample Multiplier: 1

Instrument :
 MSVOA_V
 ClientSampleId :
 VSTD100242

Quant Time: Jul 12 07:26:54 2023
 Quant Method : Z:\voasrv\HPCHEM1\MSVOA_V\Method\SFAMVLM071123WMA.M
 Quant Title : VOC Analysis
 QLast Update : Wed Jul 12 07:24:21 2023
 Response via : Initial Calibration

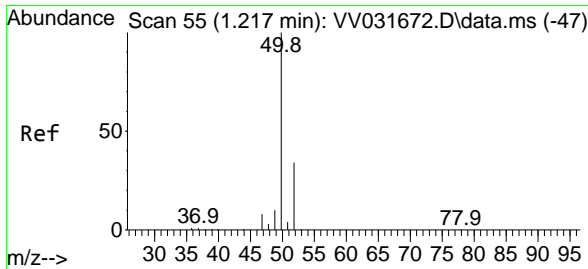
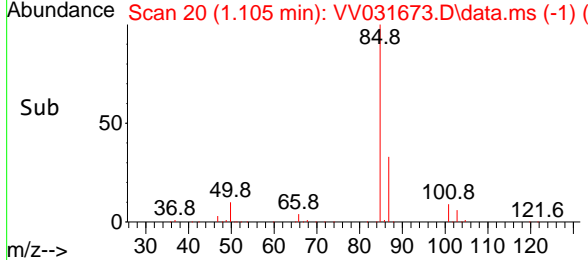
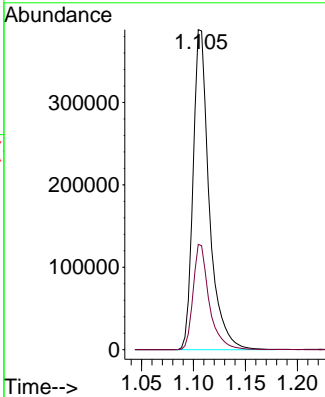
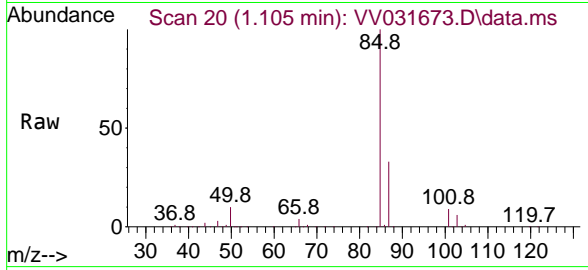




#2
 Dichlorodifluoromethane
 Concen: 117.405 ug/L
 RT: 1.105 min Scan# 20
 Delta R.T. -0.003 min
 Lab File: VV031673.D
 Acq: 11 Jul 2023 11:43

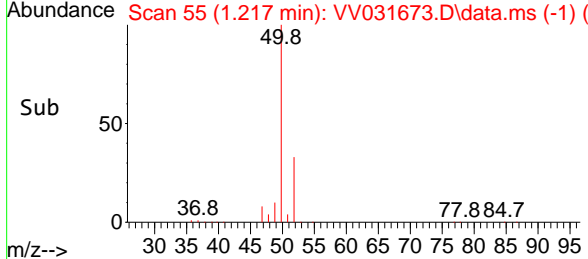
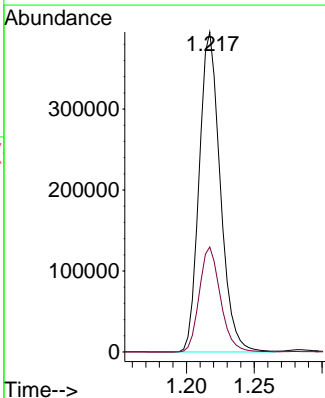
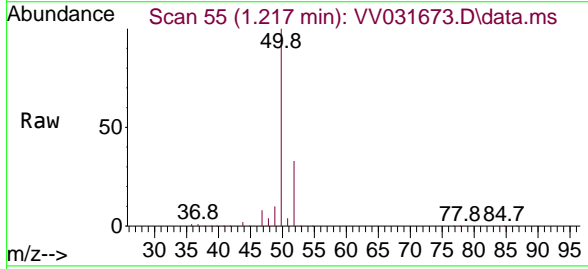
Instrument : MSVOA_V
 ClientSampleId : VSTD100242

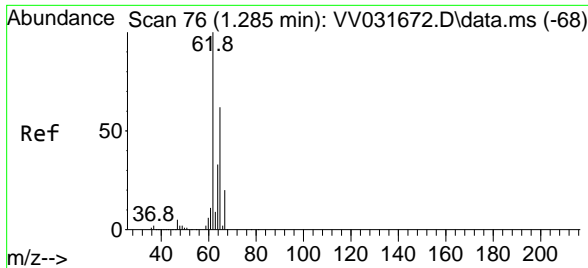
Tgt Ion: 85 Resp: 421276
 Ion Ratio Lower Upper
 85 100
 87 32.8 25.8 38.6



#3
 Chloromethane
 Concen: 125.717 ug/L
 RT: 1.217 min Scan# 55
 Delta R.T. 0.000 min
 Lab File: VV031673.D
 Acq: 11 Jul 2023 11:43

Tgt Ion: 50 Resp: 427085
 Ion Ratio Lower Upper
 50 100
 52 32.8 23.7 44.1

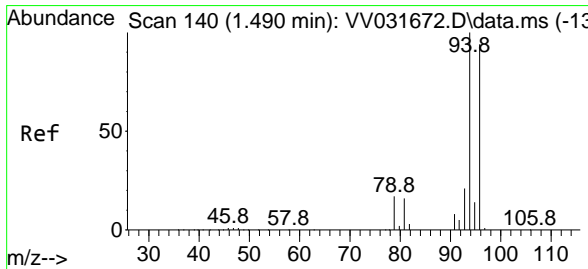
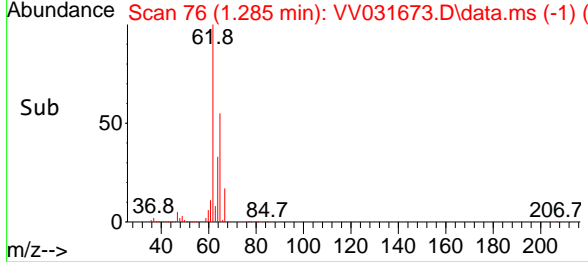
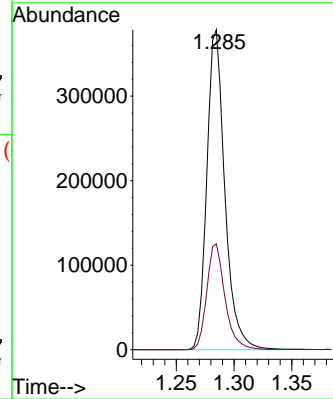
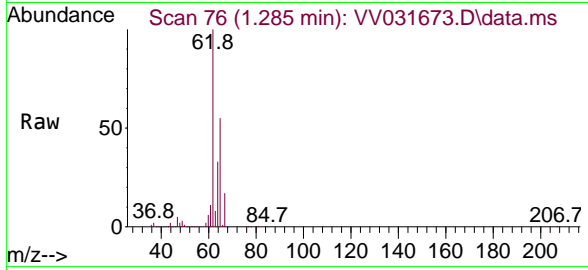




#5
 Vinyl chloride
 Concen: 122.662 ug/L
 RT: 1.285 min Scan# 70
 Delta R.T. 0.000 min
 Lab File: VV031673.D
 Acq: 11 Jul 2023 11:43

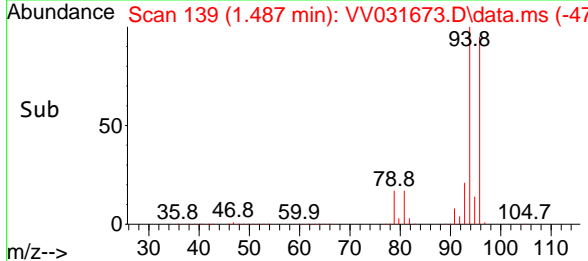
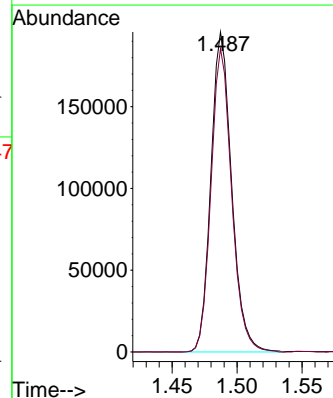
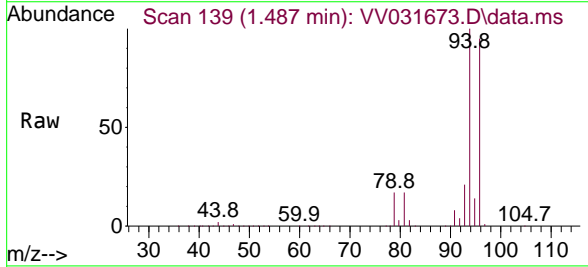
Instrument :
 MSVOA_V
 ClientSampleId :
 VSTD100242

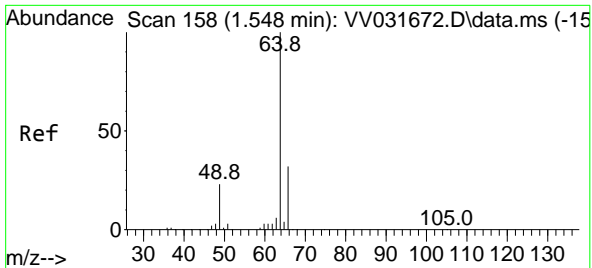
Tgt Ion: 62 Resp: 411377
 Ion Ratio Lower Upper
 62 100
 64 33.1 22.9 42.5



#6
 Bromomethane
 Concen: 101.105 ug/L
 RT: 1.487 min Scan# 139
 Delta R.T. -0.003 min
 Lab File: VV031673.D
 Acq: 11 Jul 2023 11:43

Tgt Ion: 94 Resp: 217644
 Ion Ratio Lower Upper
 94 100
 96 94.8 65.7 121.9

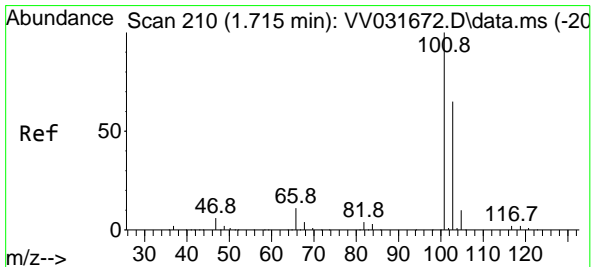
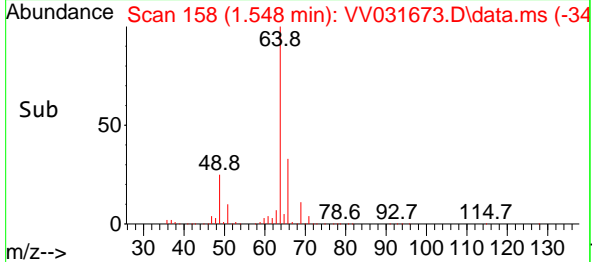
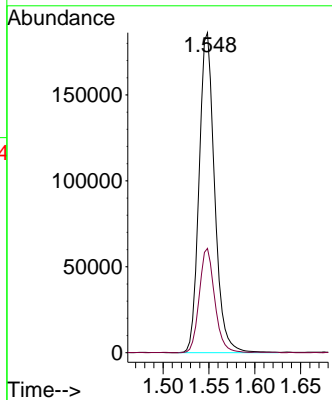
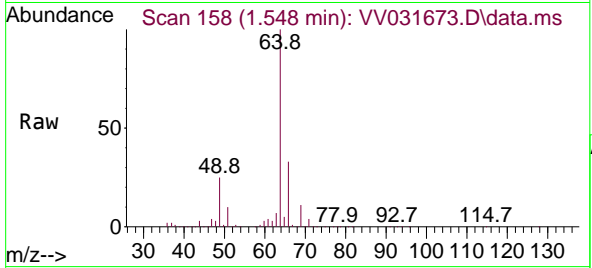




#8
 Chloroethane
 Concen: 101.998 ug/L
 RT: 1.548 min Scan# 11
 Delta R.T. 0.000 min
 Lab File: VV031673.D
 Acq: 11 Jul 2023 11:43

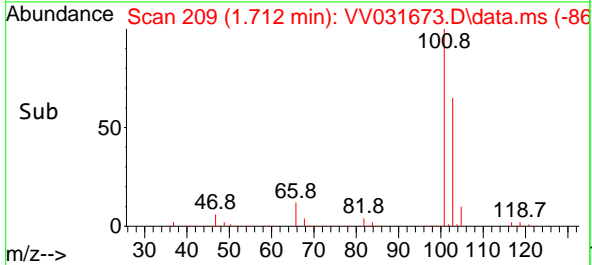
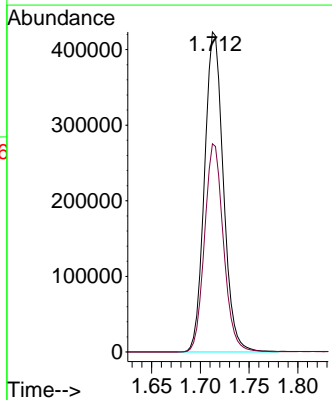
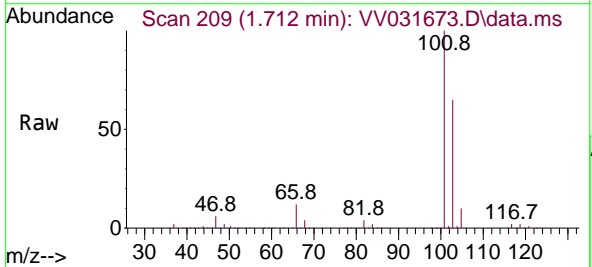
Instrument : MSVOA_V
 ClientSampleId : VSTD100242

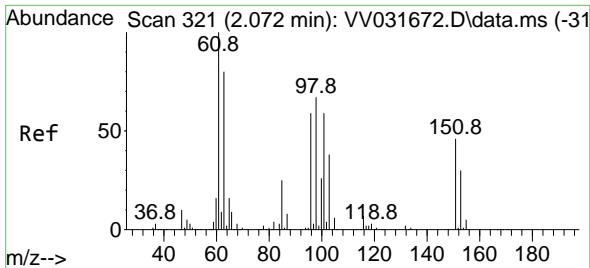
Tgt Ion: 64 Resp: 219344
 Ion Ratio Lower Upper
 64 100
 66 32.6 22.4 41.6



#9
 Trichlorofluoromethane
 Concen: 103.738 ug/L
 RT: 1.712 min Scan# 209
 Delta R.T. -0.003 min
 Lab File: VV031673.D
 Acq: 11 Jul 2023 11:43

Tgt Ion: 101 Resp: 570517
 Ion Ratio Lower Upper
 101 100
 103 65.3 51.7 77.5

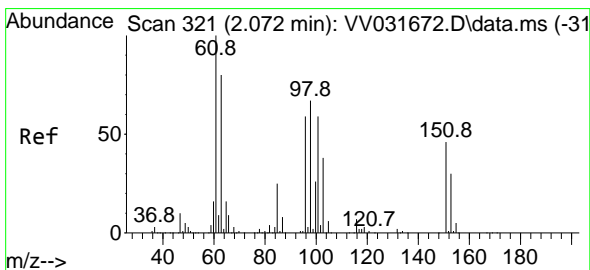
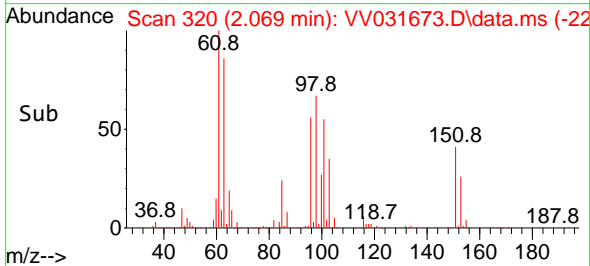
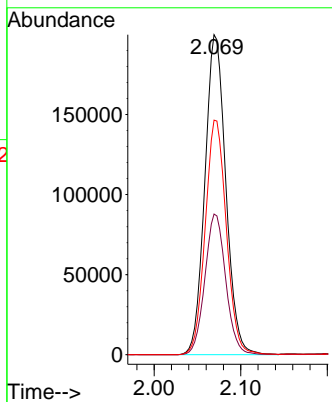
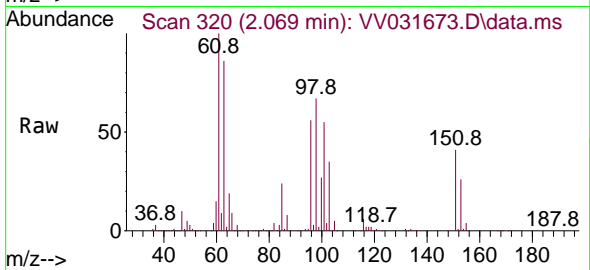




#10
 1,1,2-Trichloro-1,2,2-trifluoroethane
 Concen: 112.485 ug/L
 RT: 2.069 min Scan# 311
 Delta R.T. -0.003 min
 Lab File: VV031673.D
 Acq: 11 Jul 2023 11:43

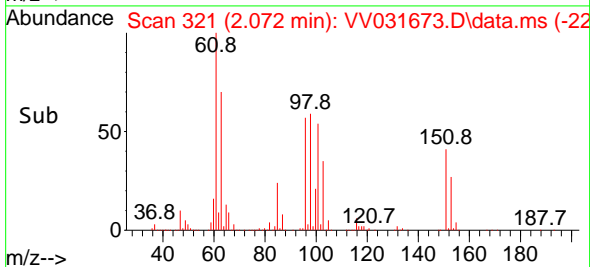
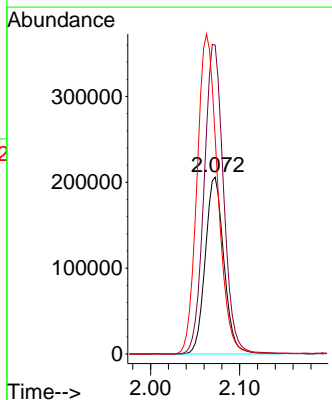
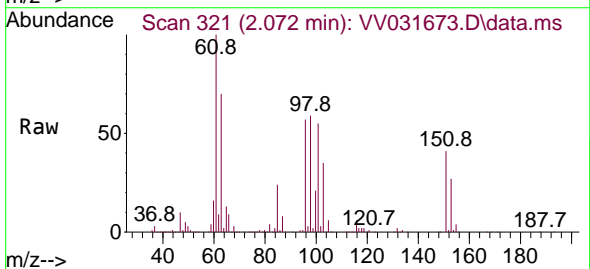
Instrument : MSVOA_V
 ClientSampleId : VSTD100242

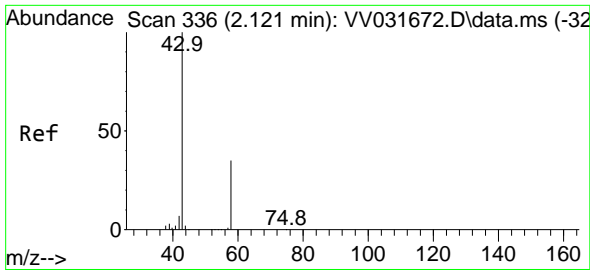
| Tgt Ion | Resp | Lower | Upper |
|---------|--------|-------|-------|
| 101 | 336258 | | |
| 101 | 100 | | |
| 85 | 43.7 | 33.9 | 50.9 |
| 151 | 73.9 | 61.0 | 91.6 |



#12
 1,1-Dichloroethene
 Concen: 119.415 ug/L
 RT: 2.072 min Scan# 321
 Delta R.T. 0.000 min
 Lab File: VV031673.D
 Acq: 11 Jul 2023 11:43

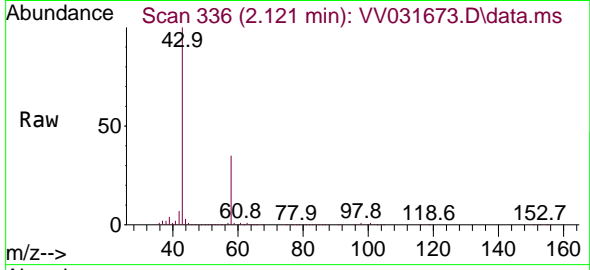
| Tgt Ion | Resp | Lower | Upper |
|---------|--------|-------|-------|
| 96 | 298956 | | |
| 96 | 100 | | |
| 61 | 174.7 | 118.3 | 219.7 |
| 63 | 122.7 | 96.8 | 179.8 |



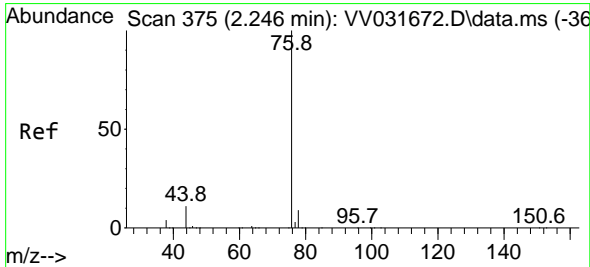
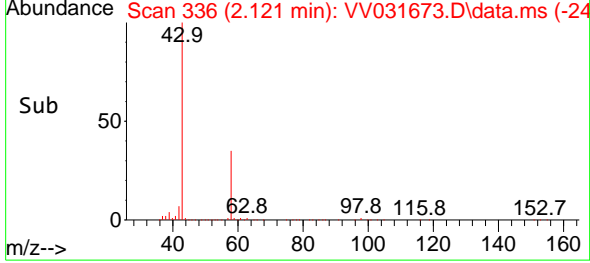
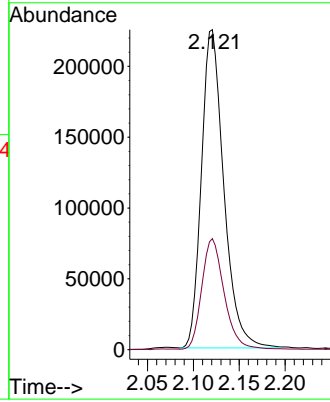


#13
 Acetone
 Concen: 218.477 ug/L
 RT: 2.121 min Scan# 311
 Delta R.T. 0.000 min
 Lab File: VV031673.D
 Acq: 11 Jul 2023 11:43

Instrument : MSVOA_V
 ClientSampleId : VSTD100242

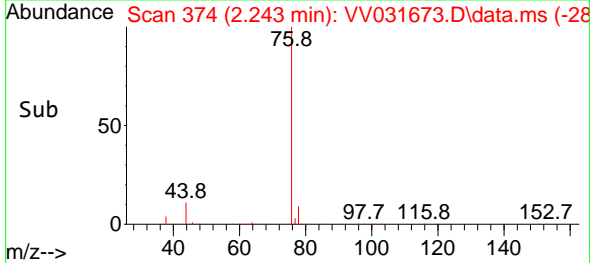
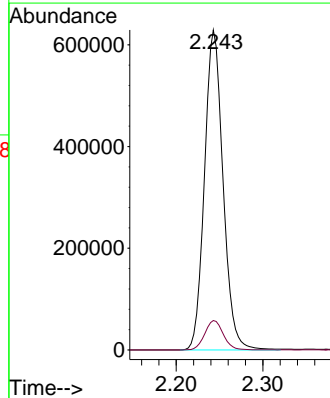
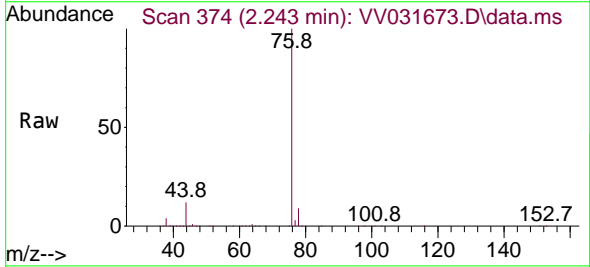


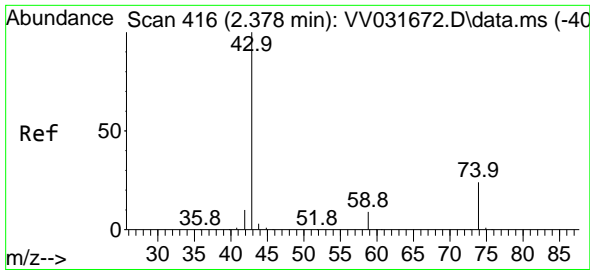
Tgt Ion: 43 Resp: 382030
 Ion Ratio Lower Upper
 43 100
 58 34.7 0.0 72.0



#14
 Carbon disulfide
 Concen: 122.655 ug/L
 RT: 2.243 min Scan# 374
 Delta R.T. -0.003 min
 Lab File: VV031673.D
 Acq: 11 Jul 2023 11:43

Tgt Ion: 76 Resp: 937161
 Ion Ratio Lower Upper
 76 100
 78 9.4 7.4 11.0

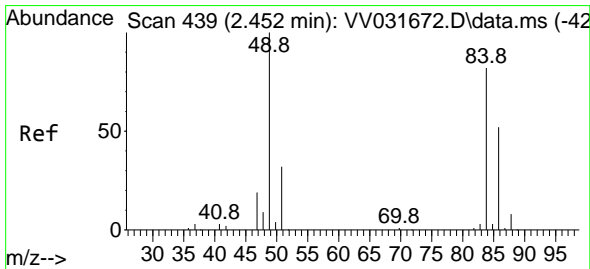
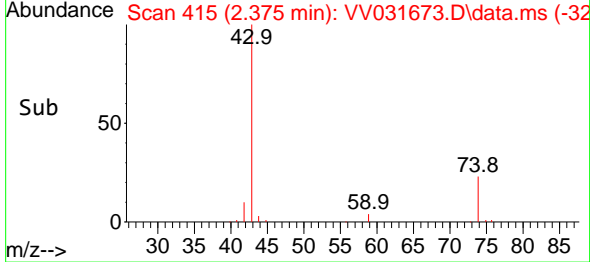
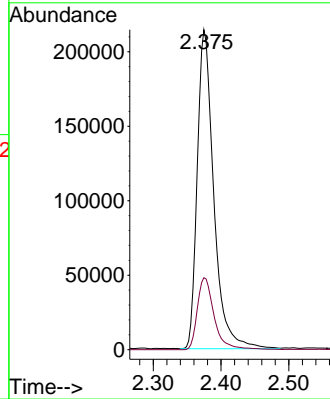
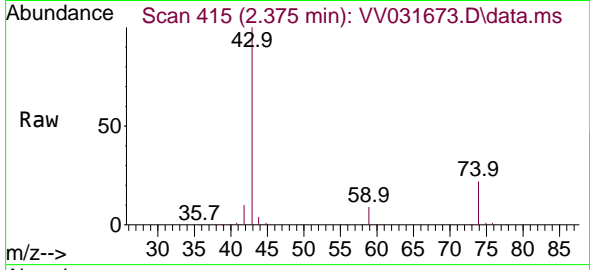




#15
Methyl Acetate
Concen: 121.799 ug/L
RT: 2.375 min Scan# 416
Delta R.T. -0.003 min
Lab File: VV031673.D
Acq: 11 Jul 2023 11:43

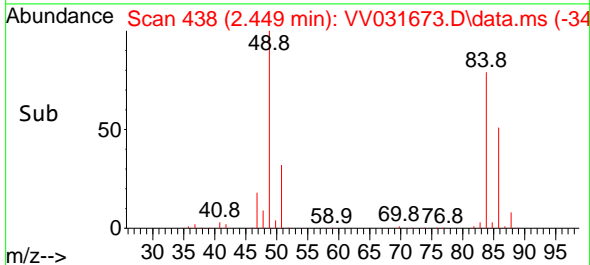
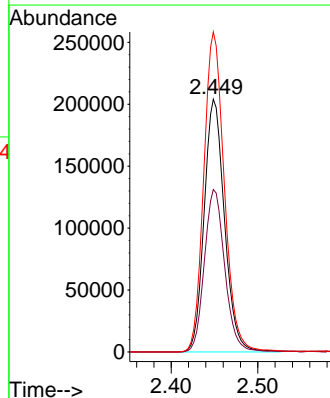
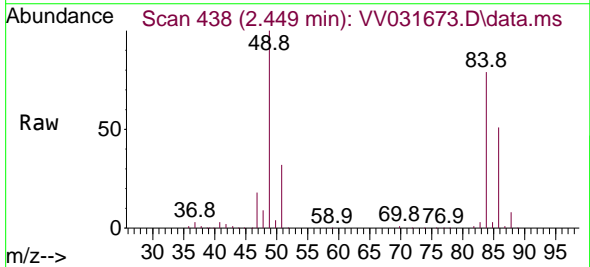
Instrument : MSVOA_V
ClientSampleId : VSTD100242

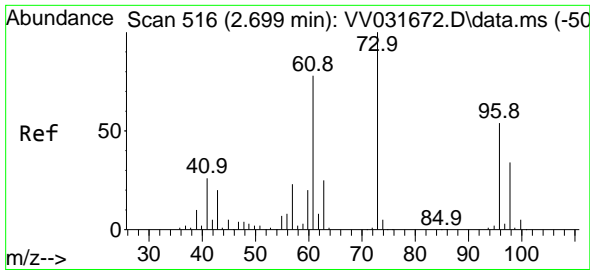
Tgt Ion: 43 Resp: 362147
Ion Ratio Lower Upper
43 100
74 23.1 19.5 29.3



#16
Methylene chloride
Concen: 107.478 ug/L
RT: 2.449 min Scan# 438
Delta R.T. -0.003 min
Lab File: VV031673.D
Acq: 11 Jul 2023 11:43

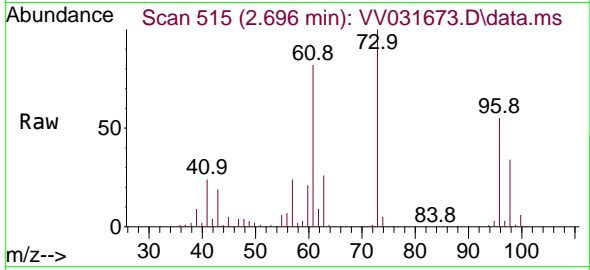
Tgt Ion: 84 Resp: 332794
Ion Ratio Lower Upper
84 100
86 64.3 44.5 82.7
49 126.6 85.3 158.5



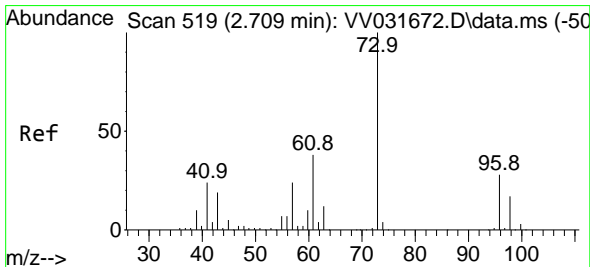
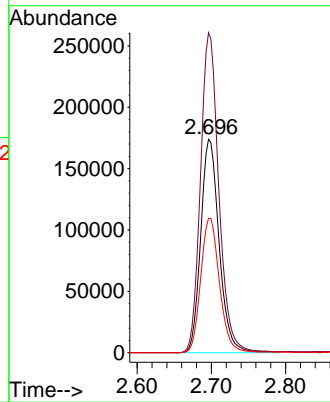
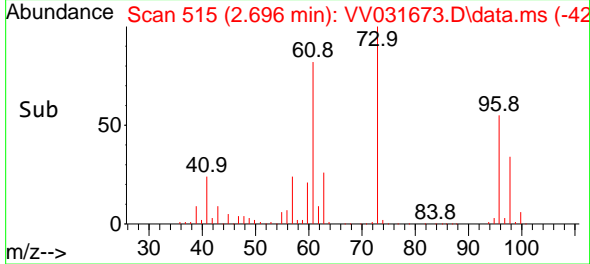


#17
 trans-1,2-Dichloroethene
 Concen: 116.510 ug/L
 RT: 2.696 min Scan# 516
 Delta R.T. -0.003 min
 Lab File: VV031673.D
 Acq: 11 Jul 2023 11:43

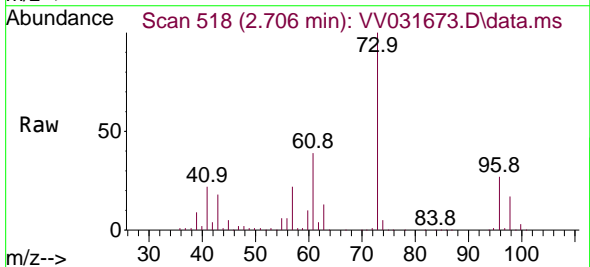
Instrument :
 MSVOA_V
 ClientSampleId :
 VSTD100242



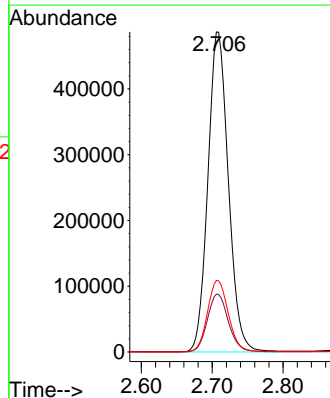
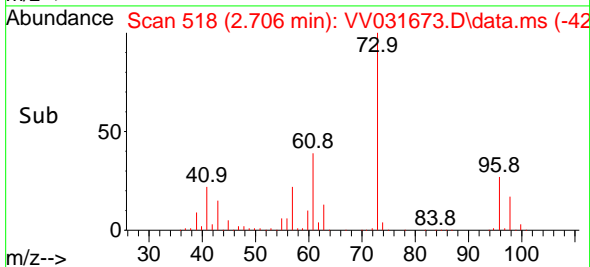
Tgt Ion: 96 Resp: 299805
 Ion Ratio Lower Upper
 96 100
 61 149.9 101.6 188.6
 98 63.0 44.7 82.9

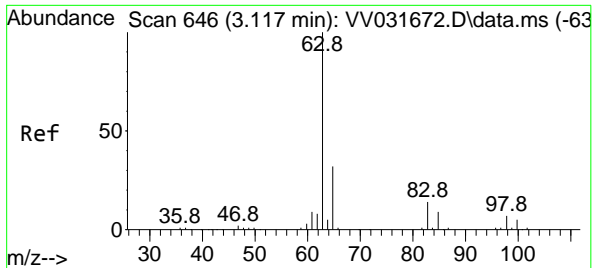


#18
 Methyl tert-butyl Ether
 Concen: 116.038 ug/L
 RT: 2.706 min Scan# 518
 Delta R.T. -0.003 min
 Lab File: VV031673.D
 Acq: 11 Jul 2023 11:43



Tgt Ion: 73 Resp: 976373
 Ion Ratio Lower Upper
 73 100
 43 18.3 15.0 22.4
 57 22.7 18.3 27.5



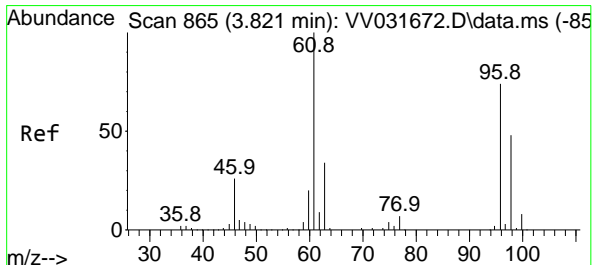
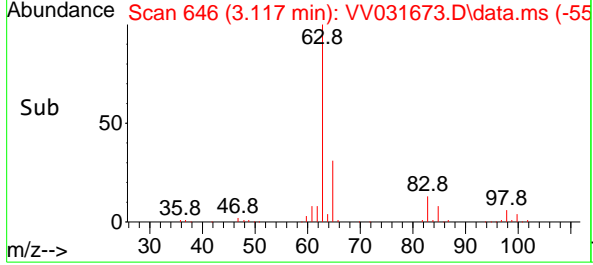
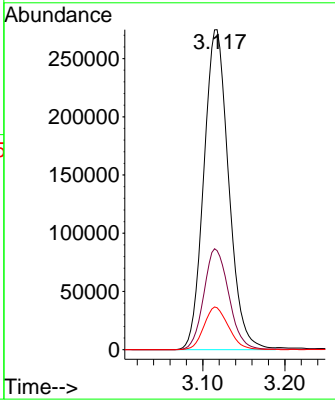
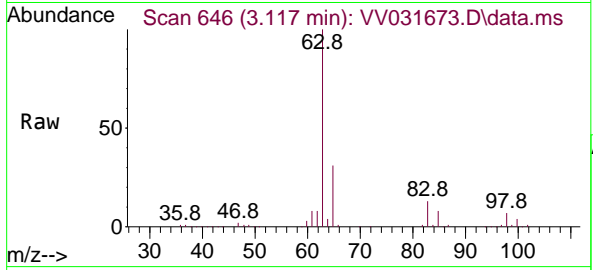


#19
 1,1-Dichloroethane
 Concen: 104.987 ug/L
 RT: 3.117 min Scan# 64
 Delta R.T. 0.000 min
 Lab File: VV031673.D
 Acq: 11 Jul 2023 11:43

Instrument : MSVOA_V
 ClientSampleId : VSTD100242

Tgt Ion: 63 Resp: 578336

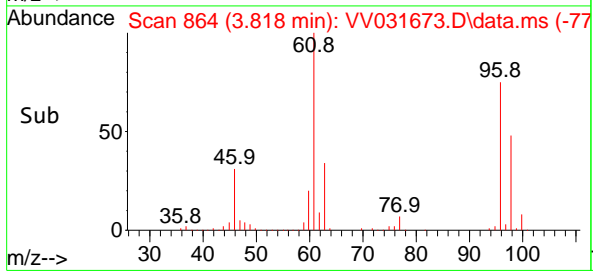
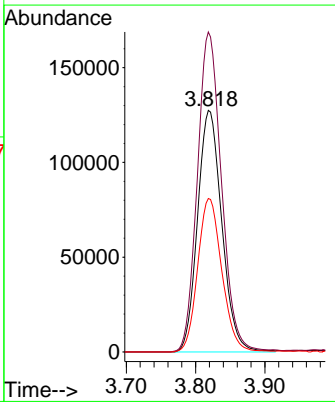
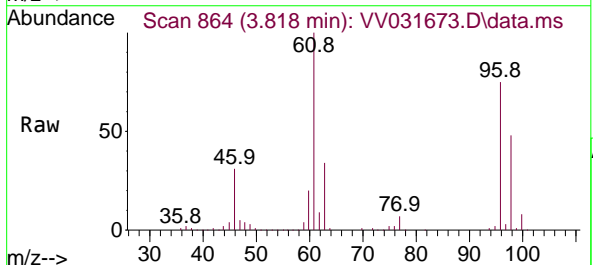
| Ion | Ratio | Lower | Upper |
|-----|-------|-------|-------|
| 63 | 100 | | |
| 65 | 30.9 | 22.3 | 41.5 |
| 83 | 13.1 | 10.6 | 19.6 |

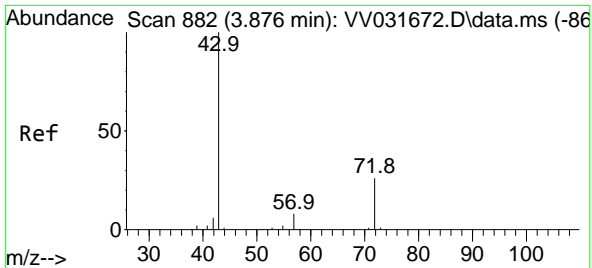


#20
 cis-1,2-Dichloroethene
 Concen: 112.738 ug/L
 RT: 3.818 min Scan# 864
 Delta R.T. -0.003 min
 Lab File: VV031673.D
 Acq: 11 Jul 2023 11:43

Tgt Ion: 96 Resp: 310342

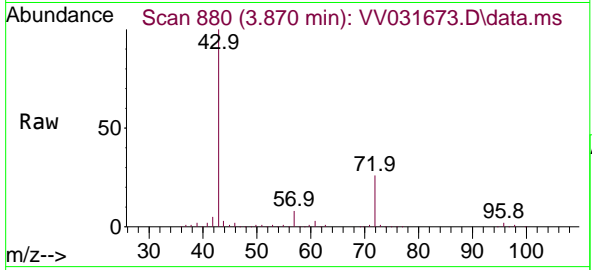
| Ion | Ratio | Lower | Upper |
|-----|-------|-------|-------|
| 96 | 100 | | |
| 61 | 132.5 | 90.6 | 168.2 |
| 98 | 63.5 | 43.8 | 81.3 |



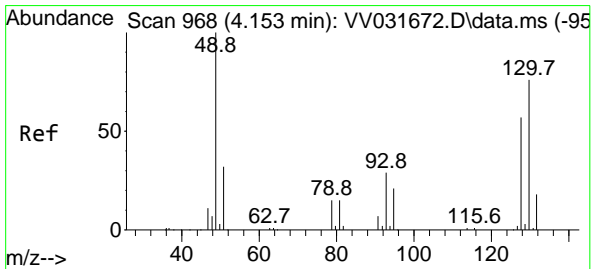
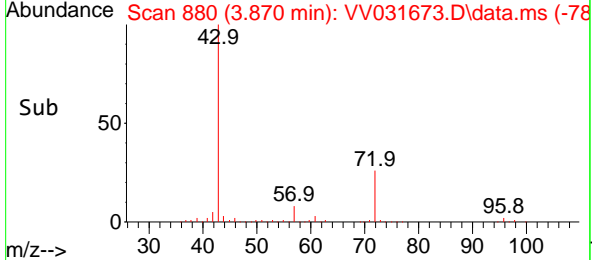
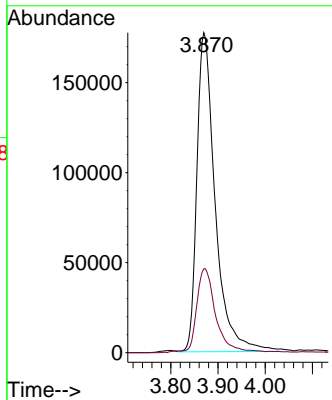


#22
 2-Butanone
 Concen: 215.491 ug/L
 RT: 3.870 min Scan# 882
 Delta R.T. -0.006 min
 Lab File: VV031673.D
 Acq: 11 Jul 2023 11:43

Instrument : MSVOA_V
 ClientSampleId : VSTD100242

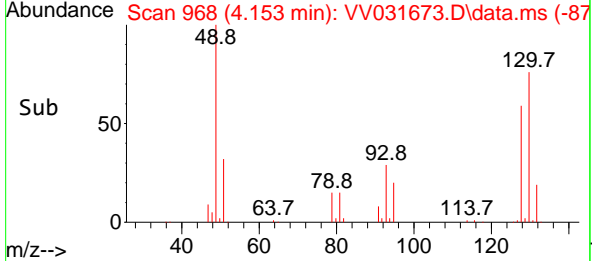
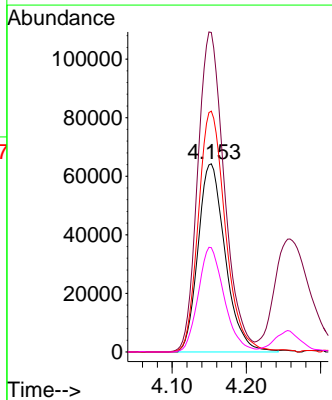
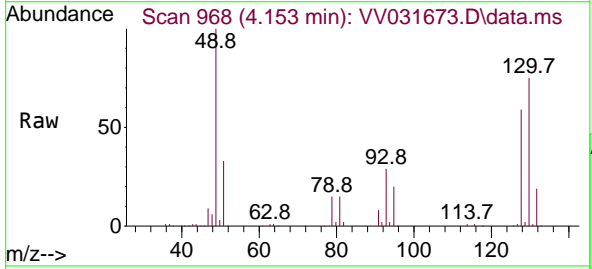


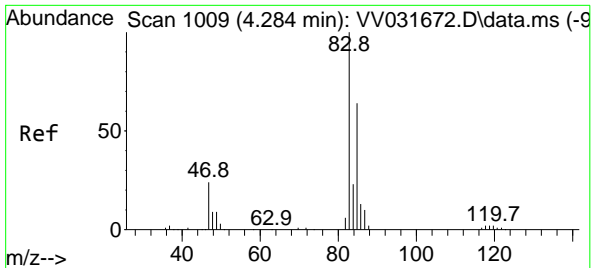
Tgt Ion: 43 Resp: 476978
 Ion Ratio Lower Upper
 43 100
 72 25.6 12.7 38.0



#23
 Bromochloromethane
 Concen: 108.083 ug/L
 RT: 4.153 min Scan# 968
 Delta R.T. 0.000 min
 Lab File: VV031673.D
 Acq: 11 Jul 2023 11:43

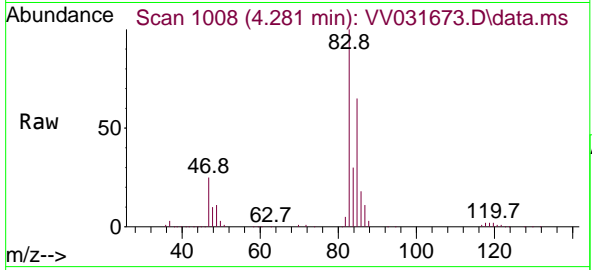
Tgt Ion:128 Resp: 163279
 Ion Ratio Lower Upper
 128 100
 49 163.1 117.9 218.9
 130 124.8 89.1 165.5
 51 53.3 42.8 64.2



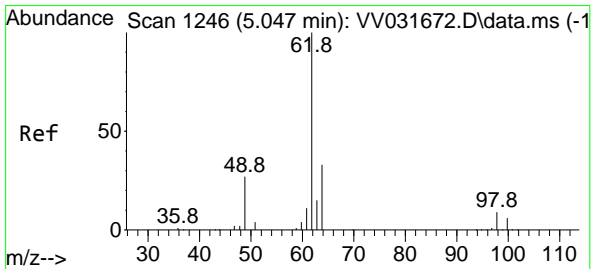
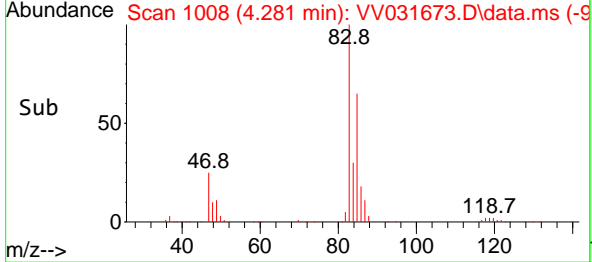
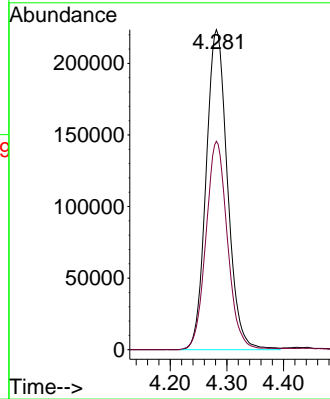


#25
 Chloroform
 Concen: 102.029 ug/L
 RT: 4.281 min Scan# 1008
 Delta R.T. -0.003 min
 Lab File: VV031673.D
 Acq: 11 Jul 2023 11:43

Instrument : MSVOA_V
 ClientSampleId : VSTD100242

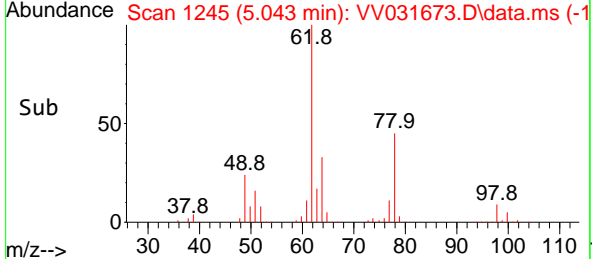
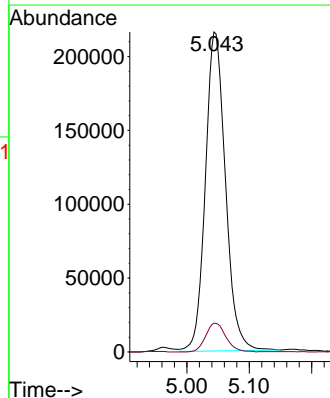
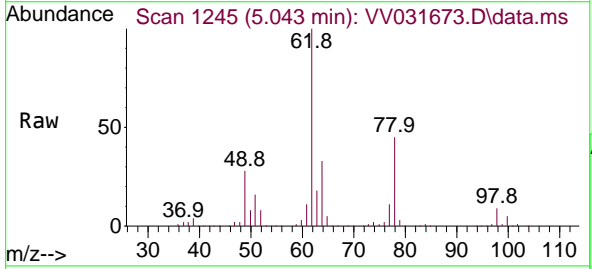


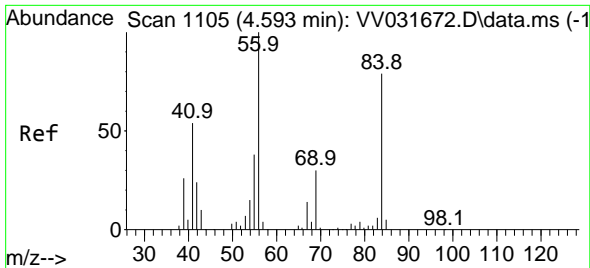
Tgt Ion: 83 Resp: 584753
 Ion Ratio Lower Upper
 83 100
 85 65.2 45.1 83.9



#27
 1,2-Dichloroethane
 Concen: 109.918 ug/L
 RT: 5.043 min Scan# 1245
 Delta R.T. -0.003 min
 Lab File: VV031673.D
 Acq: 11 Jul 2023 11:43

Tgt Ion: 62 Resp: 482823
 Ion Ratio Lower Upper
 62 100
 98 8.9 7.5 11.3



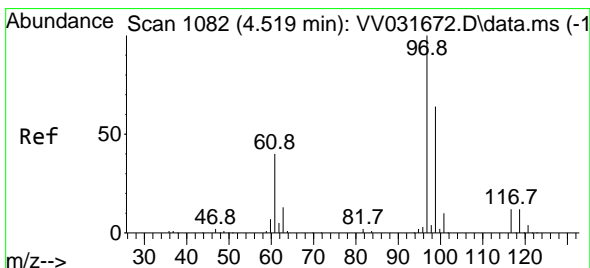
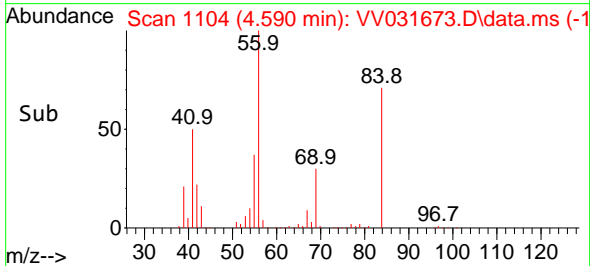
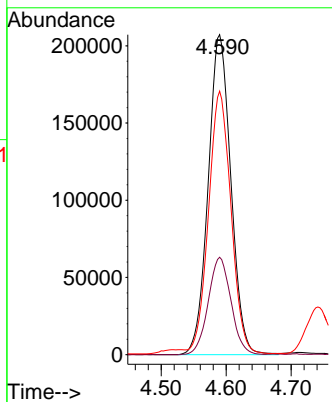
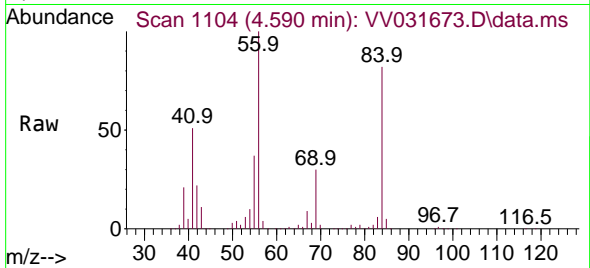


#29
 Cyclohexane
 Concen: 118.027 ug/L
 RT: 4.590 min Scan# 1104
 Delta R.T. -0.003 min
 Lab File: VV031673.D
 Acq: 11 Jul 2023 11:43

Instrument : MSVOA_V
 ClientSampleId : VSTD100242

Tgt Ion: 56 Resp: 503443

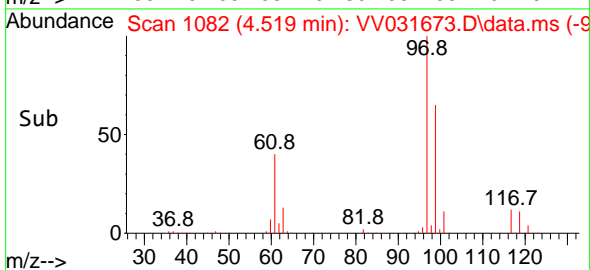
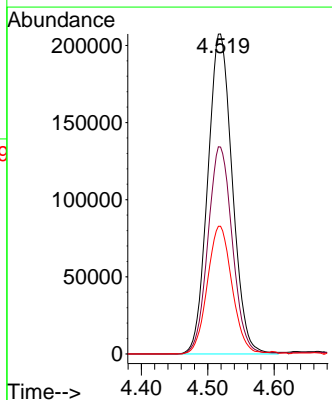
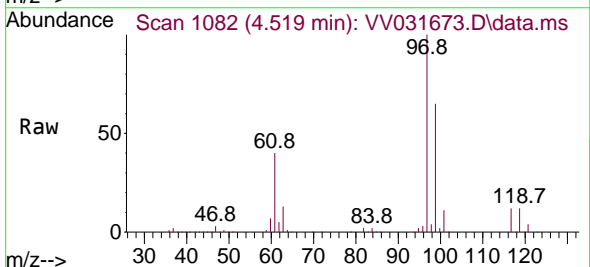
| Ion | Ratio | Lower | Upper |
|-----|-------|-------|-------|
| 56 | 100 | | |
| 69 | 30.5 | 24.1 | 36.1 |
| 84 | 81.3 | 63.6 | 95.4 |

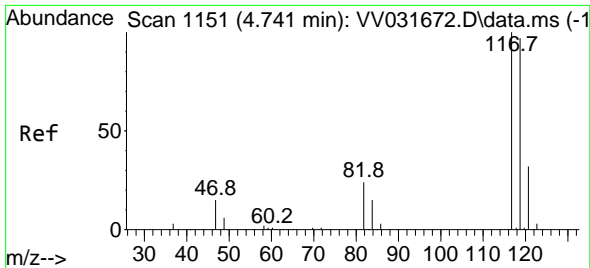


#30
 1,1,1-Trichloroethane
 Concen: 101.551 ug/L
 RT: 4.519 min Scan# 1082
 Delta R.T. 0.000 min
 Lab File: VV031673.D
 Acq: 11 Jul 2023 11:43

Tgt Ion: 97 Resp: 533567

| Ion | Ratio | Lower | Upper |
|-----|-------|-------|-------|
| 97 | 100 | | |
| 99 | 64.4 | 51.5 | 77.3 |
| 61 | 40.2 | 32.2 | 48.2 |

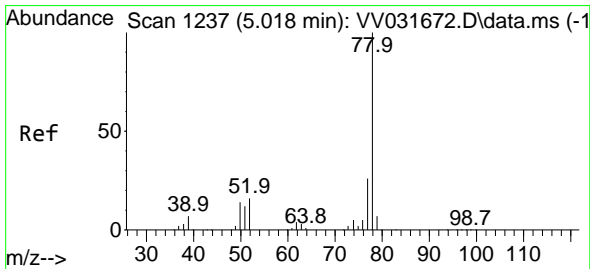
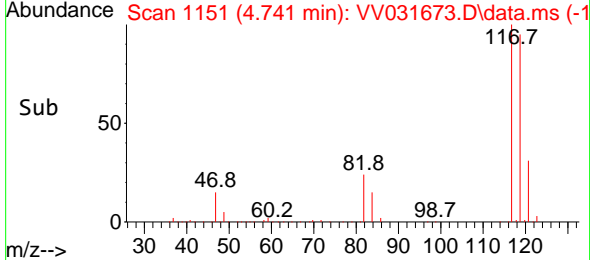
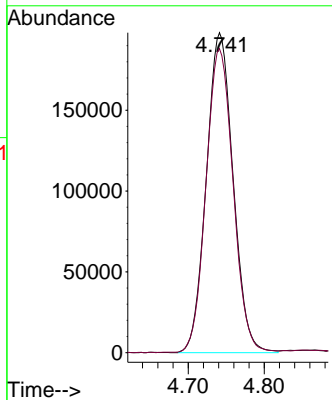
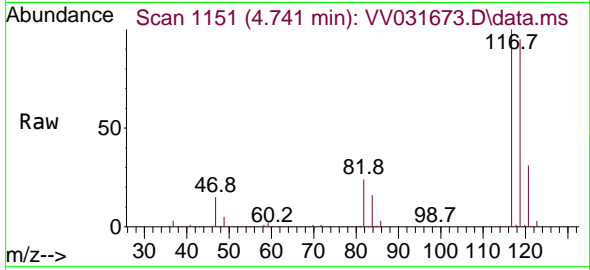




#31
 Carbon tetrachloride
 Concen: 104.150 ug/L
 RT: 4.741 min Scan# 1151
 Delta R.T. 0.000 min
 Lab File: VV031673.D
 Acq: 11 Jul 2023 11:43

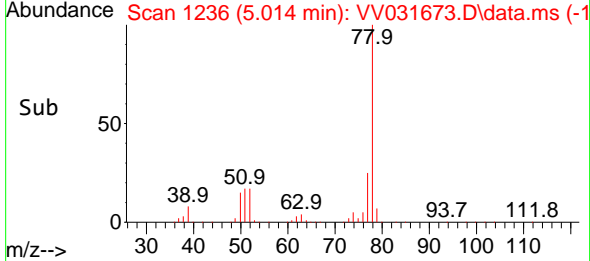
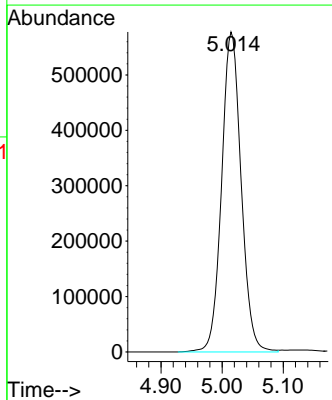
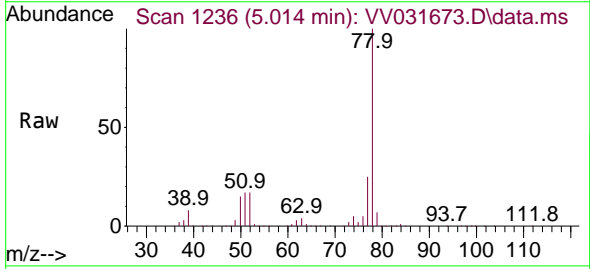
Instrument : MSVOA_V
 ClientSampleId : VSTD100242

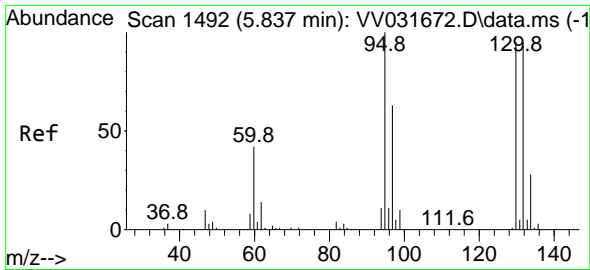
Tgt Ion:117 Resp: 484663
 Ion Ratio Lower Upper
 117 100
 119 95.7 78.0 117.0



#33
 Benzene
 Concen: 116.757 ug/L
 RT: 5.014 min Scan# 1236
 Delta R.T. -0.003 min
 Lab File: VV031673.D
 Acq: 11 Jul 2023 11:43

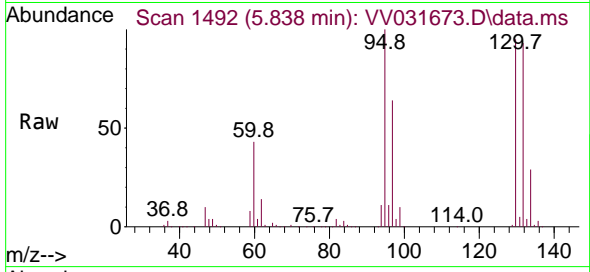
Tgt Ion: 78 Resp: 1279519





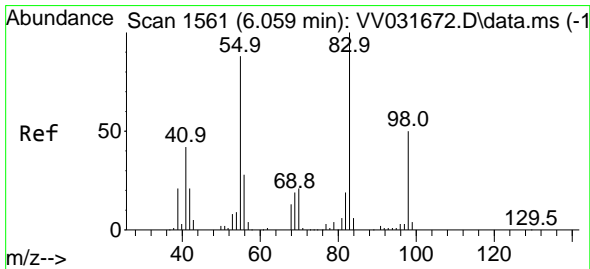
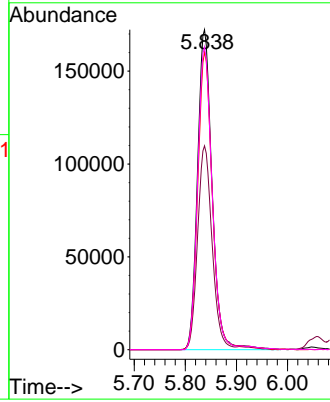
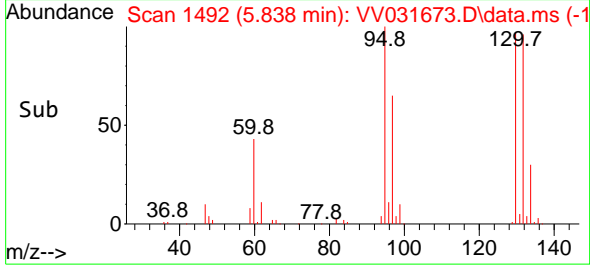
#34
 Trichloroethene
 Concen: 115.717 ug/L
 RT: 5.838 min Scan# 1492
 Delta R.T. 0.000 min
 Lab File: VV031673.D
 Acq: 11 Jul 2023 11:43

Instrument : MSVOA_V
 ClientSampleId : VSTD100242

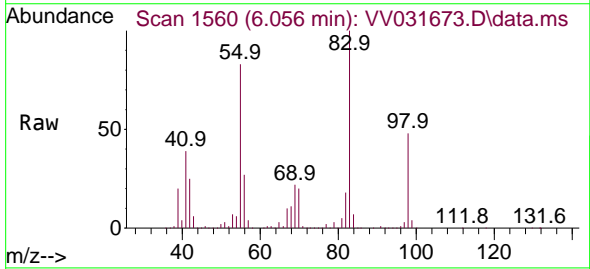


Tgt Ion: 95 Resp: 343116

| Ion | Ratio | Lower | Upper |
|-----|-------|-------|-------|
| 95 | 100 | | |
| 97 | 63.7 | 47.0 | 87.2 |
| 132 | 96.9 | 64.8 | 120.4 |
| 130 | 94.6 | 66.4 | 123.4 |

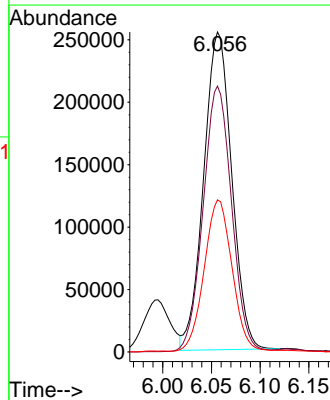
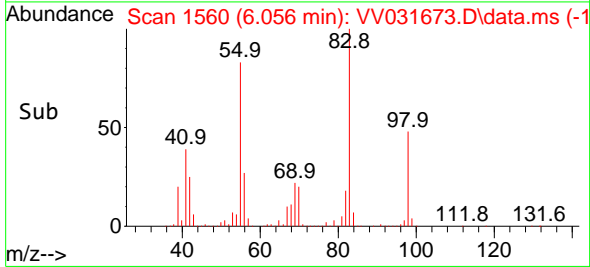


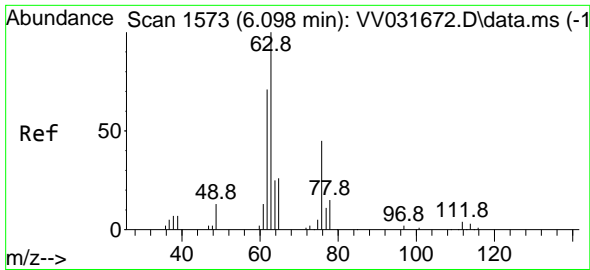
#35
 Methylcyclohexane
 Concen: 118.960 ug/L
 RT: 6.056 min Scan# 1560
 Delta R.T. -0.003 min
 Lab File: VV031673.D
 Acq: 11 Jul 2023 11:43



Tgt Ion: 83 Resp: 510177

| Ion | Ratio | Lower | Upper |
|-----|-------|-------|-------|
| 83 | 100 | | |
| 55 | 85.0 | 69.4 | 104.2 |
| 98 | 47.2 | 38.2 | 57.2 |

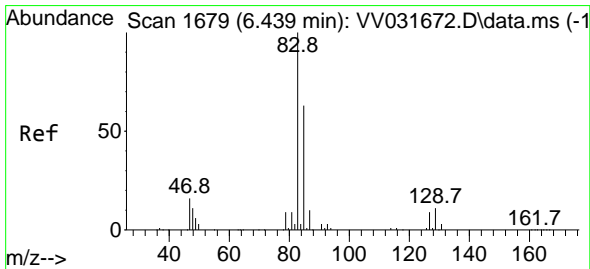
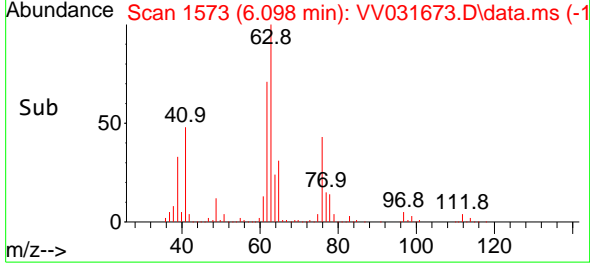
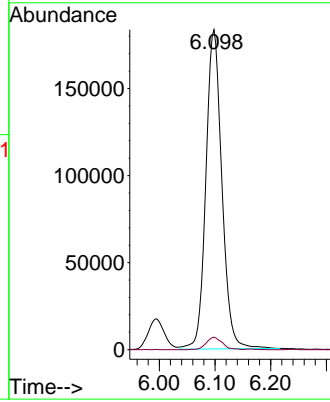
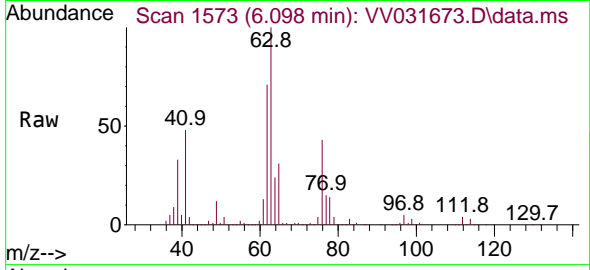




#37
 1,2-Dichloropropane
 Concen: 114.583 ug/L
 RT: 6.098 min Scan# 1573
 Delta R.T. 0.000 min
 Lab File: VV031673.D
 Acq: 11 Jul 2023 11:43

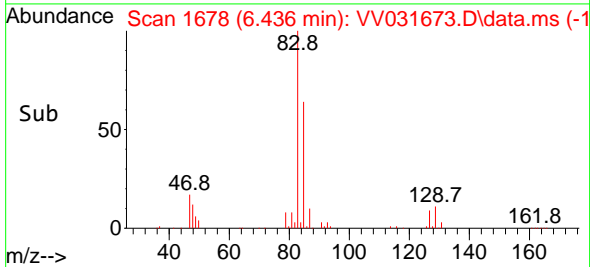
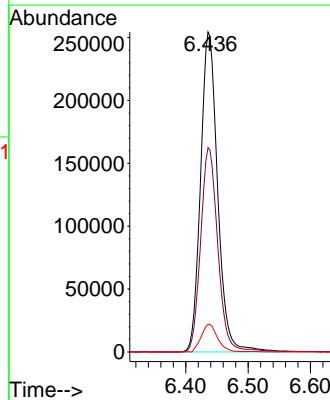
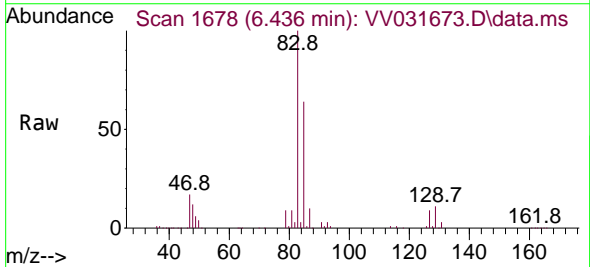
Instrument : MSVOA_V
 ClientSampleId : VSTD100242

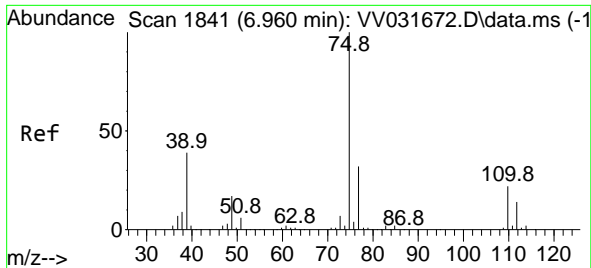
Tgt Ion: 63 Resp: 366524
 Ion Ratio Lower Upper
 63 100
 112 3.9 3.7 5.5



#38
 Bromodichloromethane
 Concen: 111.235 ug/L
 RT: 6.436 min Scan# 1678
 Delta R.T. -0.003 min
 Lab File: VV031673.D
 Acq: 11 Jul 2023 11:43

Tgt Ion: 83 Resp: 484067
 Ion Ratio Lower Upper
 83 100
 85 63.8 44.2 82.0
 127 9.5 7.8 11.6

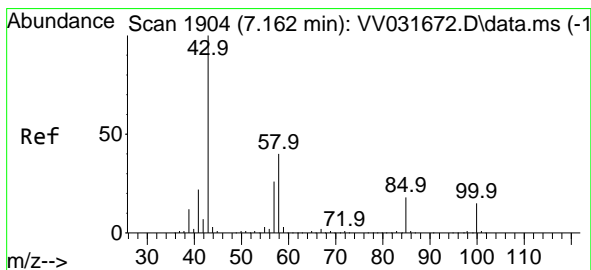
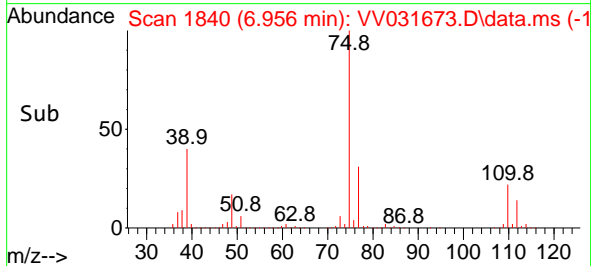
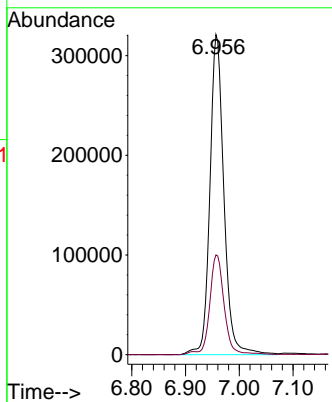
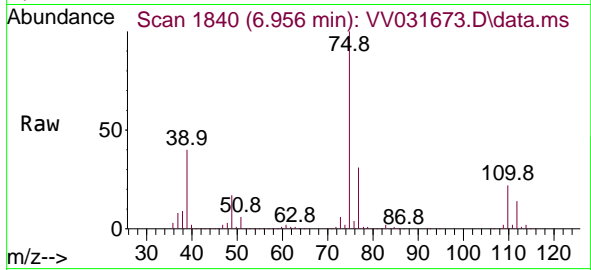




#39
 cis-1,3-Dichloropropene
 Concen: 123.080 ug/L
 RT: 6.956 min Scan# 1841
 Delta R.T. -0.003 min
 Lab File: VV031673.D
 Acq: 11 Jul 2023 11:43

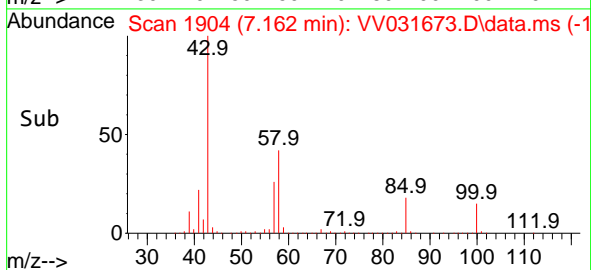
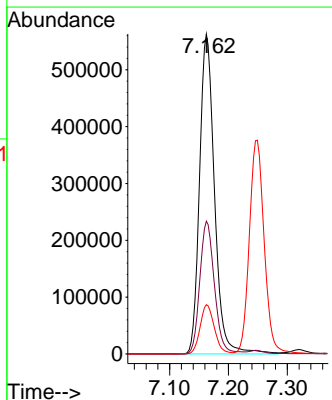
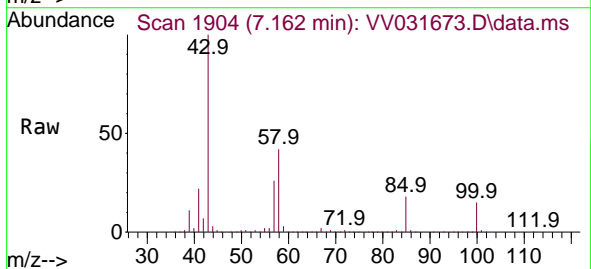
Instrument : MSVOA_V
 ClientSampleId : VSTD100242

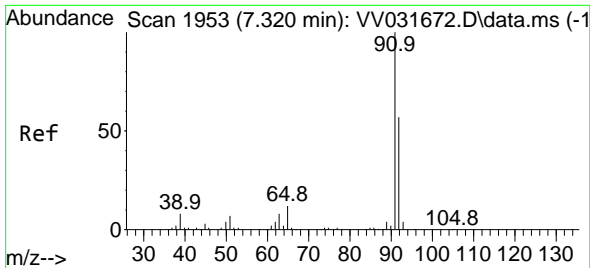
Tgt Ion: 75 Resp: 581701
 Ion Ratio Lower Upper
 75 100
 77 31.2 22.1 41.1



#40
 4-Methyl-2-pentanone
 Concen: 265.134 ug/L
 RT: 7.162 min Scan# 1904
 Delta R.T. 0.000 min
 Lab File: VV031673.D
 Acq: 11 Jul 2023 11:43

Tgt Ion: 43 Resp: 994613
 Ion Ratio Lower Upper
 43 100
 58 40.6 32.1 48.1
 100 14.7 12.1 18.1

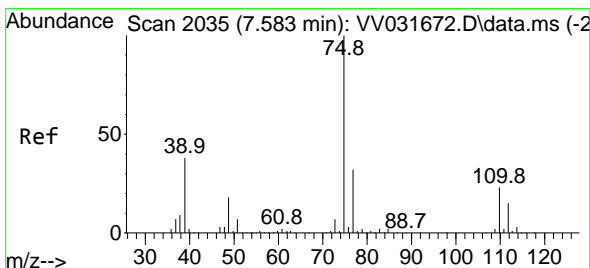
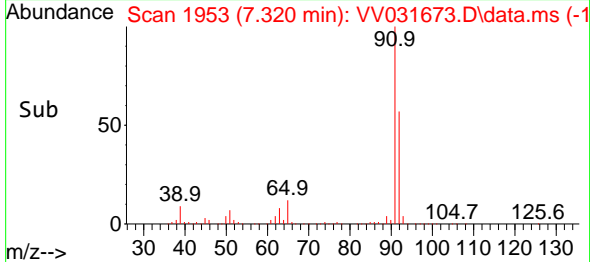
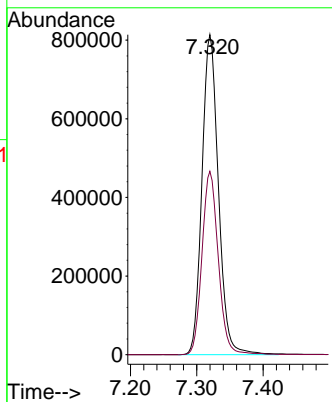
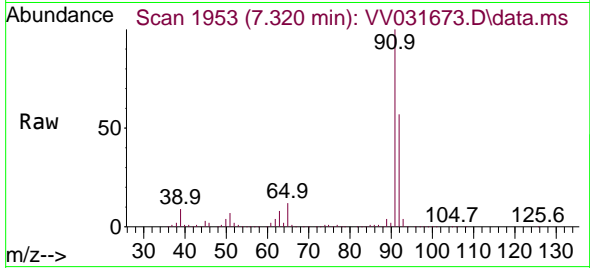




#42
 Toluene
 Concen: 122.763 ug/L
 RT: 7.320 min Scan# 1953
 Delta R.T. 0.000 min
 Lab File: VV031673.D
 Acq: 11 Jul 2023 11:43

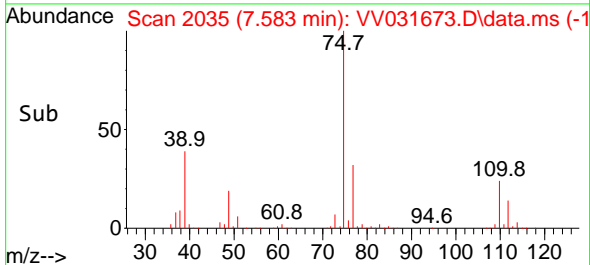
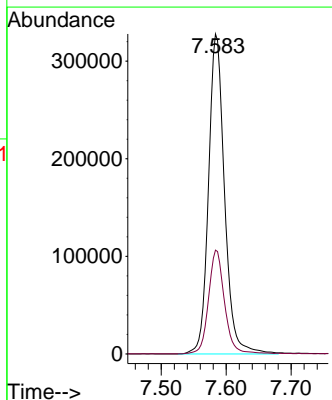
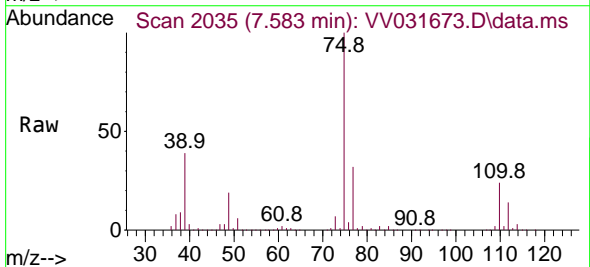
Instrument : MSVOA_V
 ClientSampleId : VSTD100242

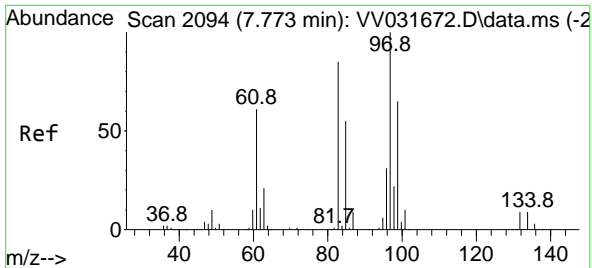
Tgt Ion: 91 Resp: 1398855
 Ion Ratio Lower Upper
 91 100
 92 57.3 39.8 73.8



#44
 trans-1,3-Dichloropropene
 Concen: 121.941 ug/L
 RT: 7.583 min Scan# 2035
 Delta R.T. 0.000 min
 Lab File: VV031673.D
 Acq: 11 Jul 2023 11:43

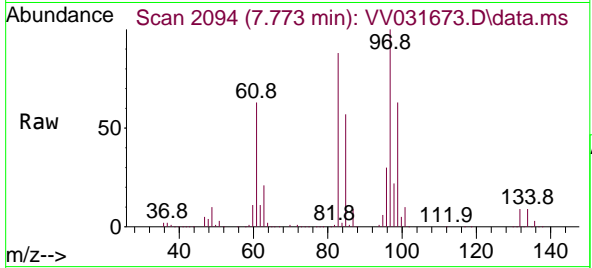
Tgt Ion: 75 Resp: 562899
 Ion Ratio Lower Upper
 75 100
 77 32.5 22.3 41.3





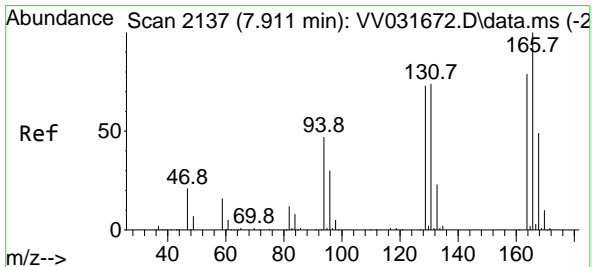
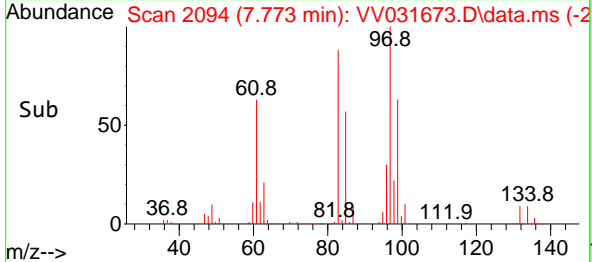
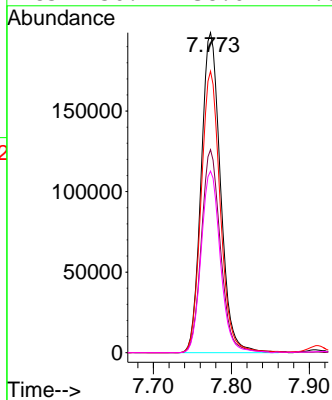
#45
 1,1,2-Trichloroethane
 Concen: 112.515 ug/L
 RT: 7.773 min Scan# 2094
 Delta R.T. 0.000 min
 Lab File: VV031673.D
 Acq: 11 Jul 2023 11:43

Instrument : MSVOA_V
 ClientSampleId : VSTD100242

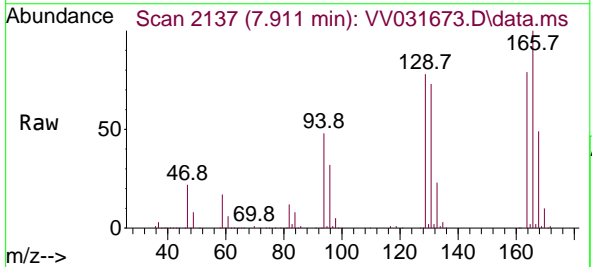


Tgt Ion: 97 Resp: 343138

| Ion | Ratio | Lower | Upper |
|-----|-------|-------|-------|
| 97 | 100 | | |
| 99 | 63.4 | 45.2 | 84.0 |
| 83 | 88.0 | 59.5 | 110.5 |
| 85 | 56.7 | 38.6 | 71.8 |

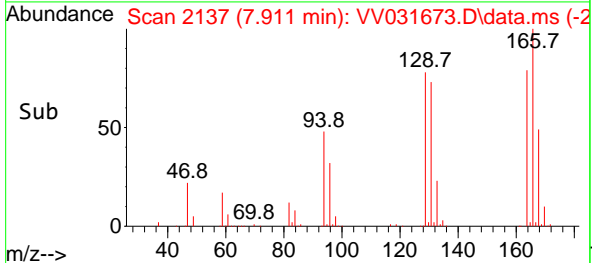
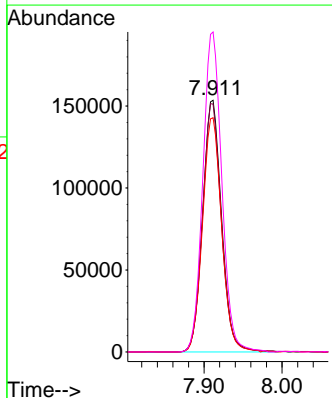


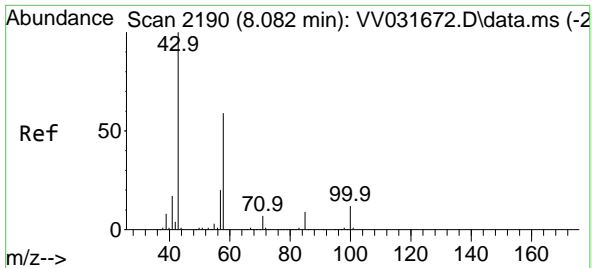
#46
 Tetrachloroethene
 Concen: 112.258 ug/L
 RT: 7.911 min Scan# 2137
 Delta R.T. 0.000 min
 Lab File: VV031673.D
 Acq: 11 Jul 2023 11:43



Tgt Ion: 164 Resp: 259756

| Ion | Ratio | Lower | Upper |
|-----|-------|-------|-------|
| 164 | 100 | | |
| 129 | 98.5 | 65.2 | 121.0 |
| 131 | 95.2 | 67.1 | 124.7 |
| 166 | 130.0 | 91.4 | 169.8 |

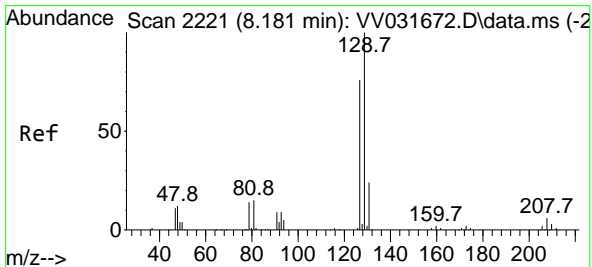
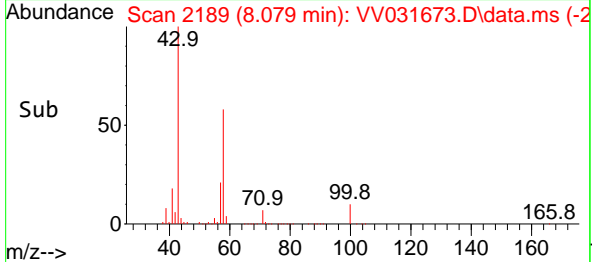
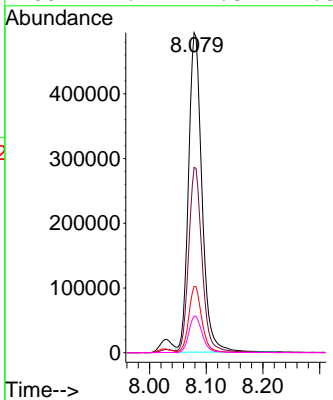
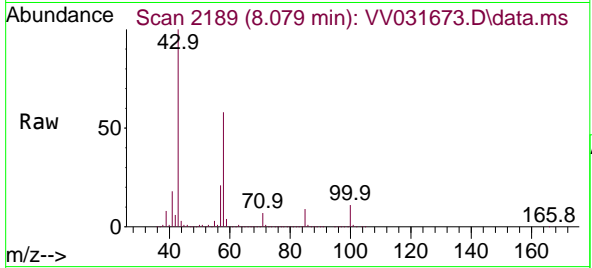




#48
 2-Hexanone
 Concen: 267.223 ug/L
 RT: 8.079 min Scan# 2190
 Delta R.T. -0.003 min
 Lab File: VV031673.D
 Acq: 11 Jul 2023 11:43

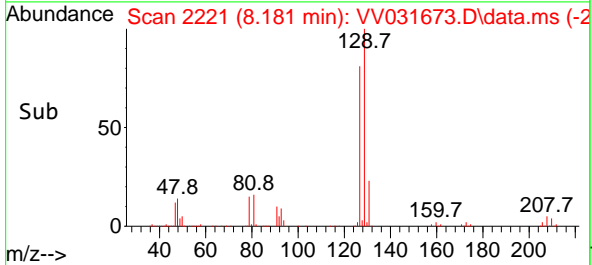
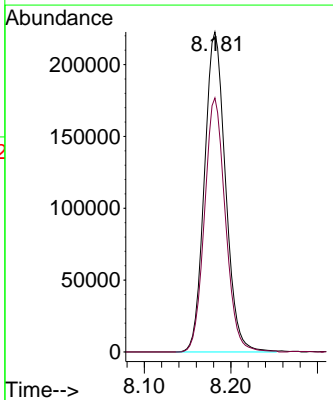
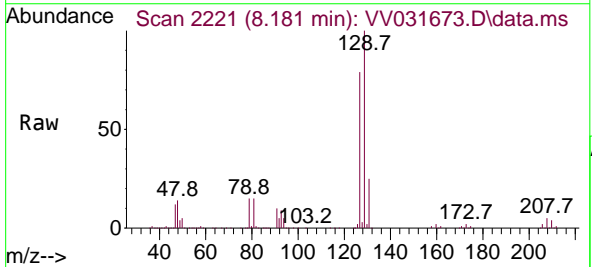
Instrument : MSVOA_V
 ClientSampleId : VSTD100242

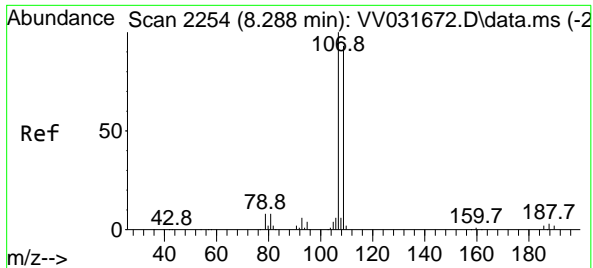
| Tgt Ion | Resp | Lower | Upper |
|---------|--------|-------|-------|
| 43 | 812542 | | |
| 43 | 100 | | |
| 58 | 57.1 | 46.3 | 69.5 |
| 57 | 20.1 | 16.8 | 25.2 |
| 100 | 11.4 | 9.8 | 14.8 |



#49
 Dibromochloromethane
 Concen: 110.783 ug/L
 RT: 8.181 min Scan# 2221
 Delta R.T. 0.000 min
 Lab File: VV031673.D
 Acq: 11 Jul 2023 11:43

| Tgt Ion | Resp | Lower | Upper |
|---------|--------|-------|-------|
| 129 | 376433 | | |
| 129 | 100 | | |
| 127 | 82.3 | 55.2 | 102.6 |



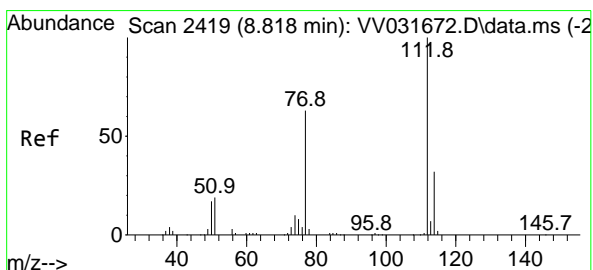
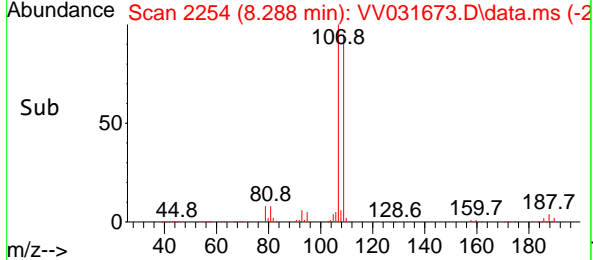
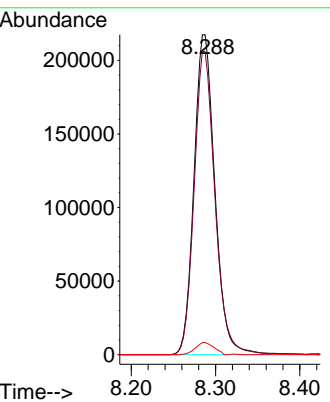
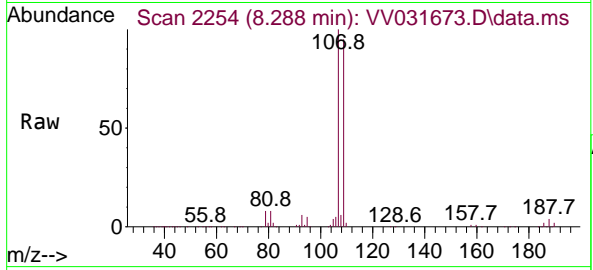


#50
 1,2-Dibromoethane
 Concen: 115.186 ug/L
 RT: 8.288 min Scan# 2119
 Delta R.T. 0.000 min
 Lab File: VV031673.D
 Acq: 11 Jul 2023 11:43

Instrument : MSVOA_V
 ClientSampleId : VSTD100242

Tgt Ion:107 Resp: 375229

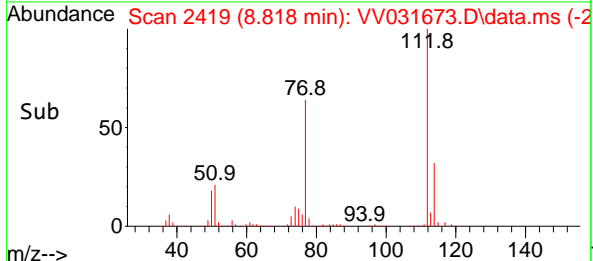
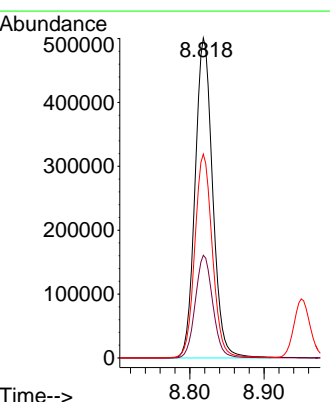
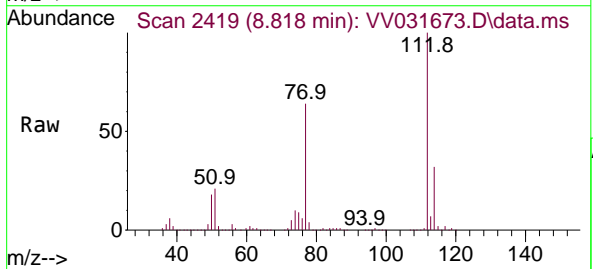
| Ion | Ratio | Lower | Upper |
|-----|-------|-------|-------|
| 107 | 100 | | |
| 109 | 94.7 | 65.4 | 121.4 |
| 188 | 3.9 | 2.8 | 4.2 |

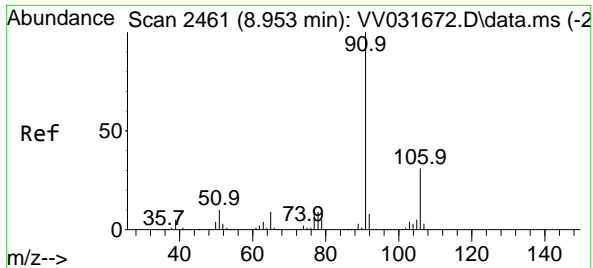


#51
 Chlorobenzene
 Concen: 109.055 ug/L
 RT: 8.818 min Scan# 2419
 Delta R.T. 0.000 min
 Lab File: VV031673.D
 Acq: 11 Jul 2023 11:43

Tgt Ion:112 Resp: 821302

| Ion | Ratio | Lower | Upper |
|-----|-------|-------|-------|
| 112 | 100 | | |
| 114 | 32.1 | 22.2 | 41.2 |
| 77 | 63.7 | 50.6 | 76.0 |

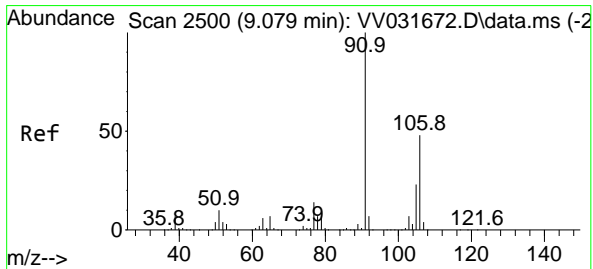
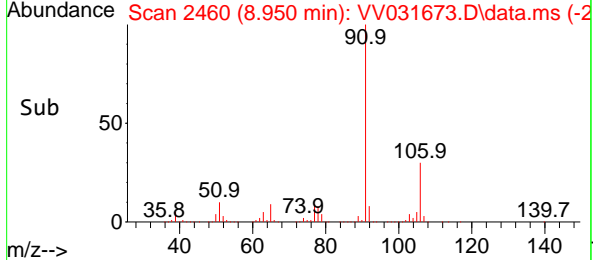
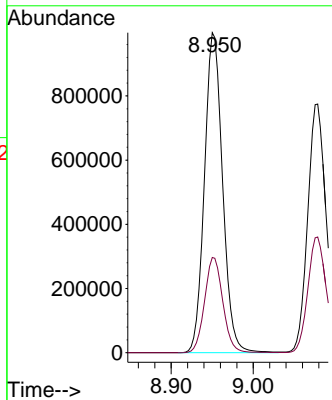
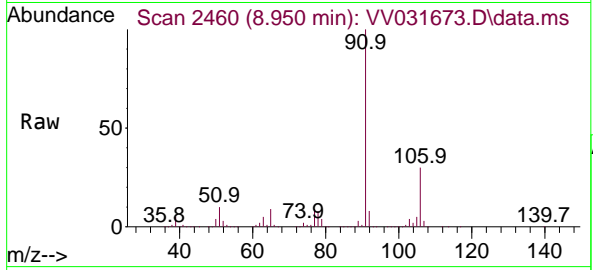




#52
 Ethylbenzene
 Concen: 121.907 ug/L
 RT: 8.950 min Scan# 2461
 Delta R.T. -0.003 min
 Lab File: VV031673.D
 Acq: 11 Jul 2023 11:43

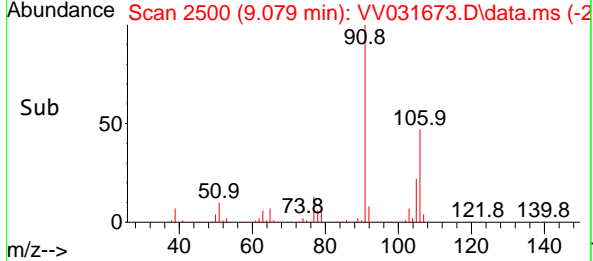
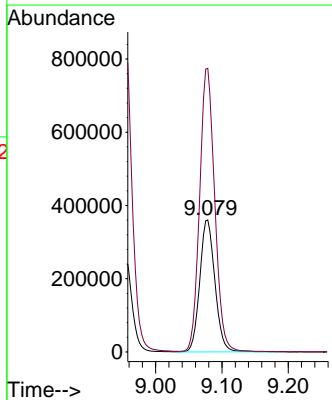
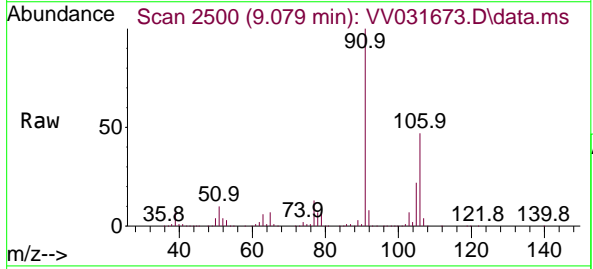
Instrument : MSVOA_V
 ClientSampleId : VSTD100242

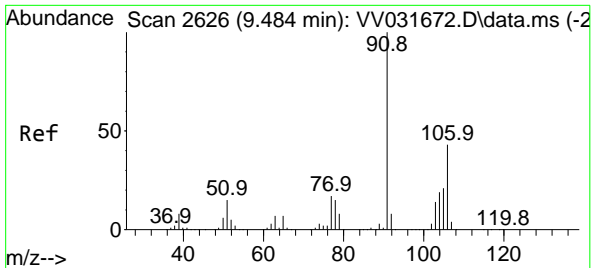
Tgt Ion: 91 Resp: 1535573
 Ion Ratio Lower Upper
 91 100
 106 29.7 21.5 39.9



#53
 m,p-Xylene
 Concen: 123.044 ug/L
 RT: 9.079 min Scan# 2500
 Delta R.T. 0.000 min
 Lab File: VV031673.D
 Acq: 11 Jul 2023 11:43

Tgt Ion:106 Resp: 572647
 Ion Ratio Lower Upper
 106 100
 91 214.8 145.6 270.4

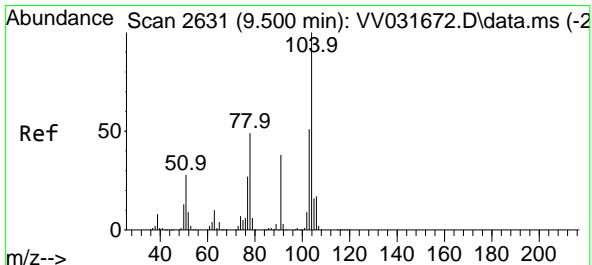
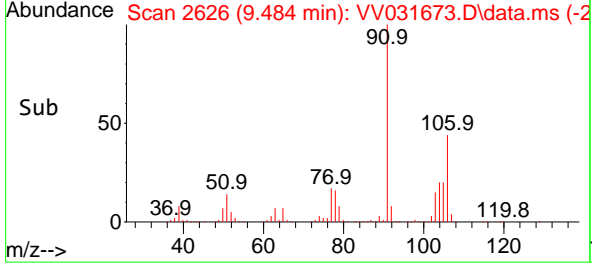
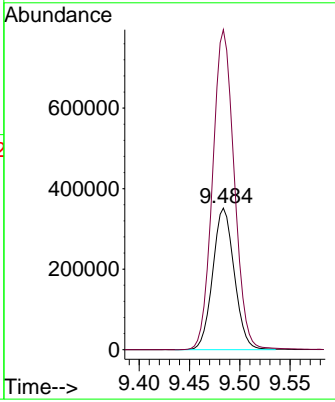
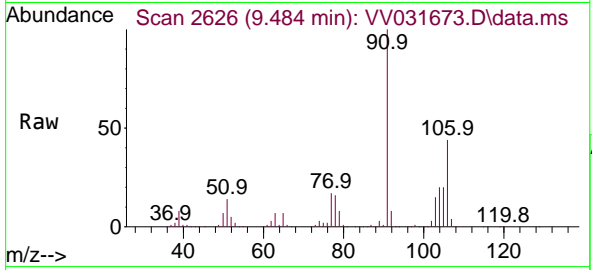




#54
 o-Xylene
 Concen: 119.795 ug/L
 RT: 9.484 min Scan# 2626
 Delta R.T. 0.000 min
 Lab File: VV031673.D
 Acq: 11 Jul 2023 11:43

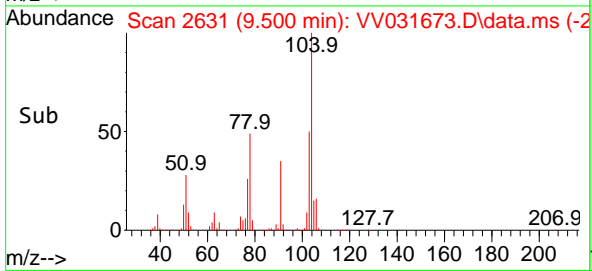
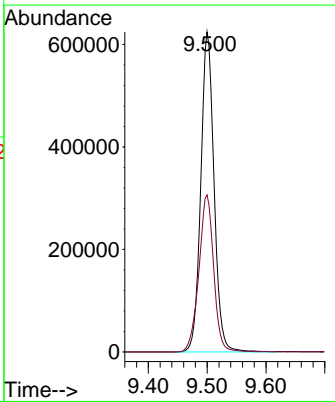
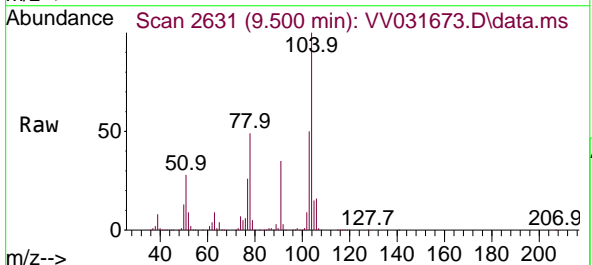
Instrument : MSVOA_V
 ClientSampleId : VSTD100242

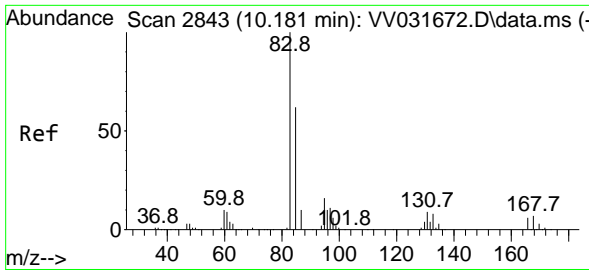
Tgt Ion:106 Resp: 524480
 Ion Ratio Lower Upper
 106 100
 91 225.9 163.0 302.6



#55
 Styrene
 Concen: 123.470 ug/L
 RT: 9.500 min Scan# 2631
 Delta R.T. 0.000 min
 Lab File: VV031673.D
 Acq: 11 Jul 2023 11:43

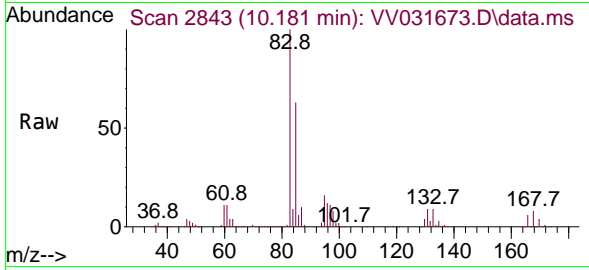
Tgt Ion:104 Resp: 977972
 Ion Ratio Lower Upper
 104 100
 78 49.1 34.4 64.0



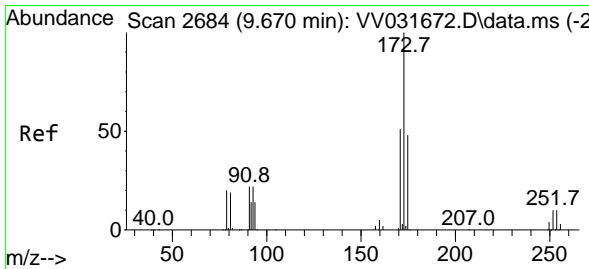
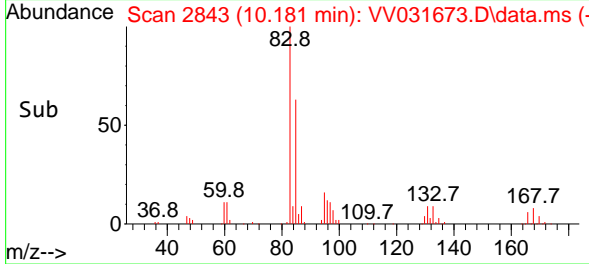
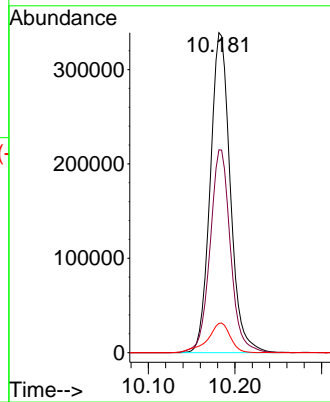


#57
 1,1,2,2-Tetrachloroethane
 Concen: 110.807 ug/L
 RT: 10.181 min Scan# 2843
 Delta R.T. 0.000 min
 Lab File: VV031673.D
 Acq: 11 Jul 2023 11:43

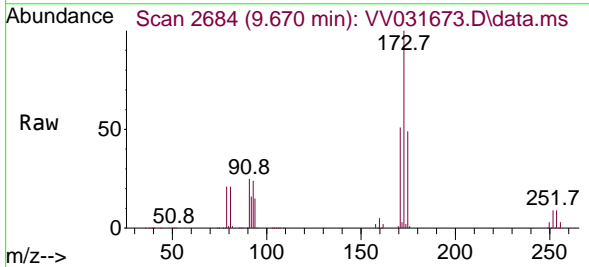
Instrument : MSVOA_V
 ClientSampleId : VSTD100242



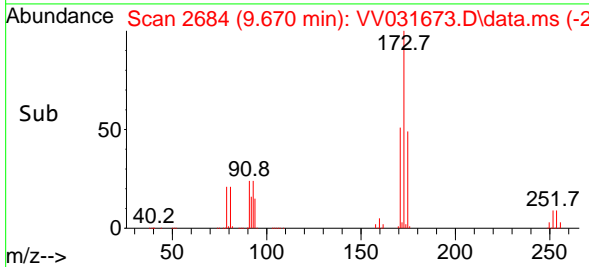
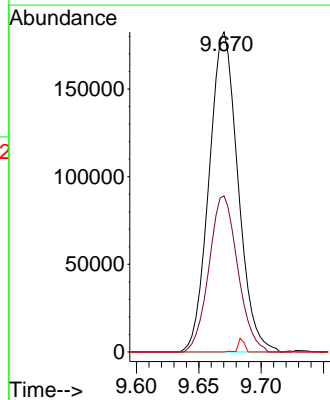
Tgt Ion: 83 Resp: 544369
 Ion Ratio Lower Upper
 83 100
 85 63.4 43.4 80.6
 131 12.6 10.9 16.3

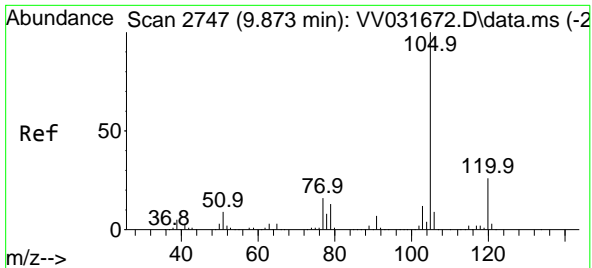


#59
 Bromoform
 Concen: 113.440 ug/L
 RT: 9.670 min Scan# 2684
 Delta R.T. 0.000 min
 Lab File: VV031673.D
 Acq: 11 Jul 2023 11:43



Tgt Ion: 173 Resp: 294598
 Ion Ratio Lower Upper
 173 100
 175 48.5 38.6 58.0
 254 0.1 6.9 10.3



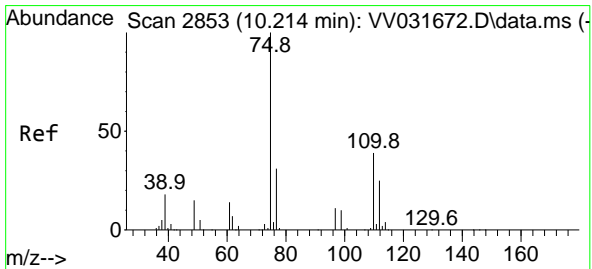
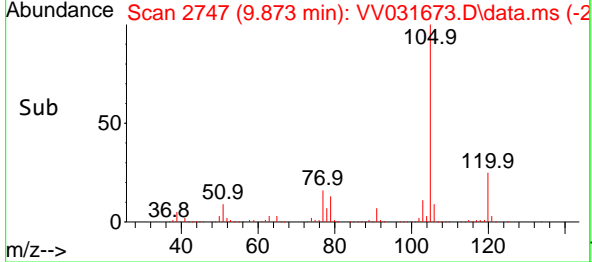
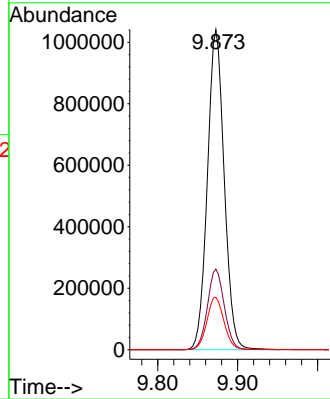
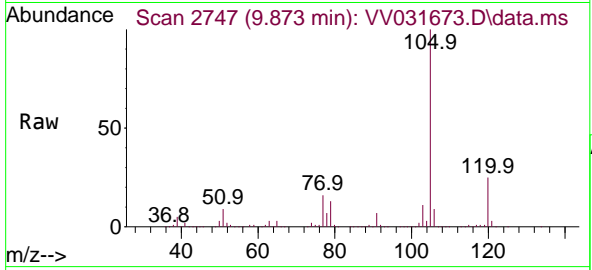


#60
 Isopropylbenzene
 Concen: 116.263 ug/L
 RT: 9.873 min Scan# 21
 Delta R.T. 0.000 min
 Lab File: VV031673.D
 Acq: 11 Jul 2023 11:43

Instrument :
 MSVOA_V
 ClientSampleId :
 VSTD100242

Tgt Ion:105 Resp: 1520589

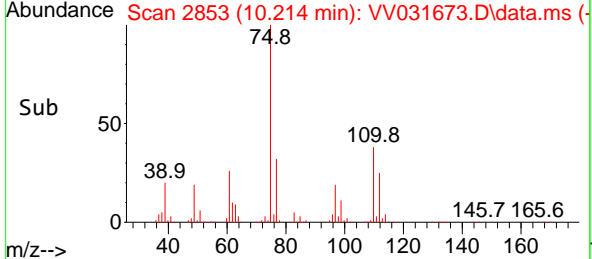
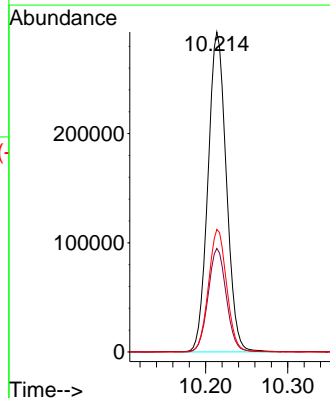
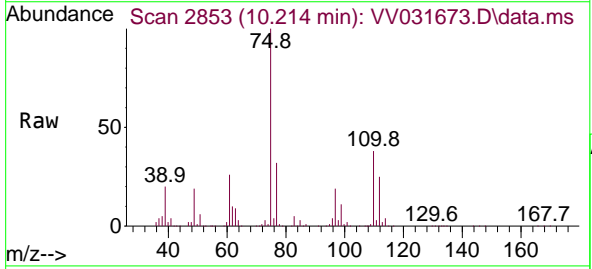
| Ion | Ratio | Lower | Upper |
|-----|-------|-------|-------|
| 105 | 100 | | |
| 120 | 25.4 | 20.6 | 30.8 |
| 77 | 16.6 | 13.2 | 19.8 |

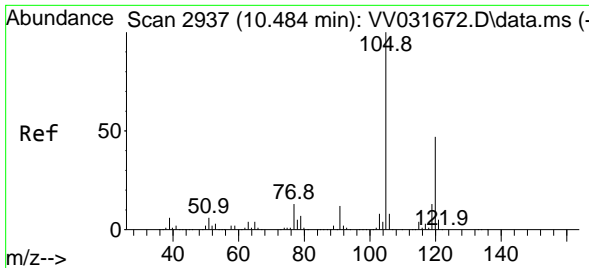


#61
 1,2,3-Trichloropropane
 Concen: 110.845 ug/L
 RT: 10.214 min Scan# 2853
 Delta R.T. 0.000 min
 Lab File: VV031673.D
 Acq: 11 Jul 2023 11:43

Tgt Ion: 75 Resp: 456582

| Ion | Ratio | Lower | Upper |
|-----|-------|-------|-------|
| 75 | 100 | | |
| 77 | 32.3 | 25.1 | 37.7 |
| 110 | 38.1 | 31.4 | 47.0 |

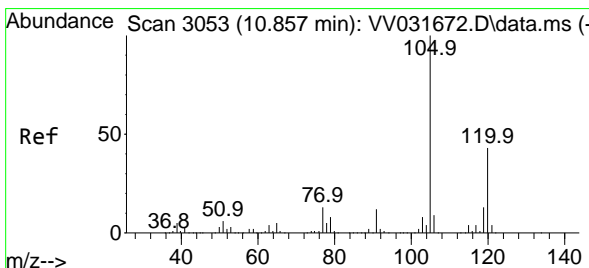
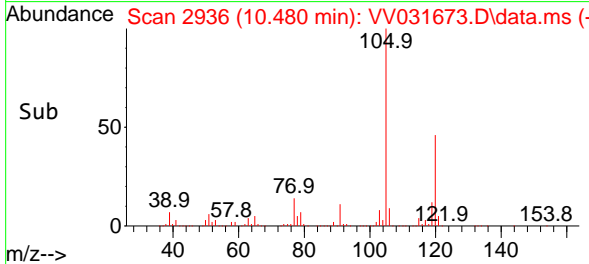
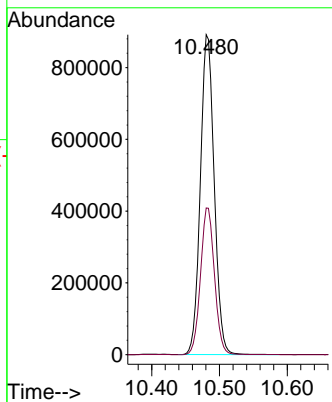
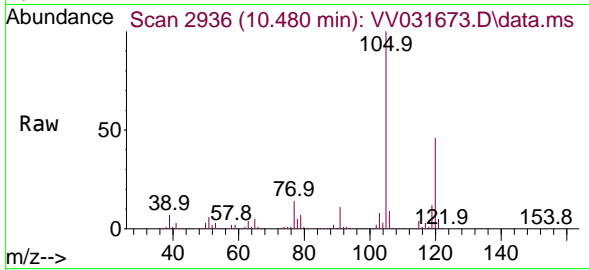




#62
 1,3,5-Trimethylbenzene
 Concen: 117.470 ug/L
 RT: 10.480 min Scan# 2937
 Delta R.T. -0.003 min
 Lab File: VV031673.D
 Acq: 11 Jul 2023 11:43

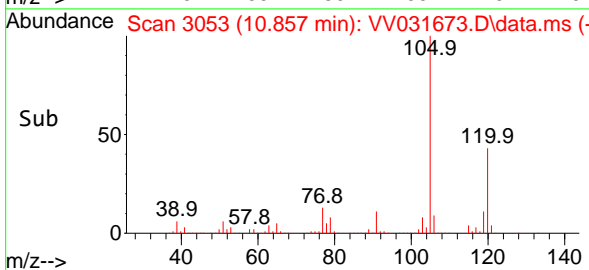
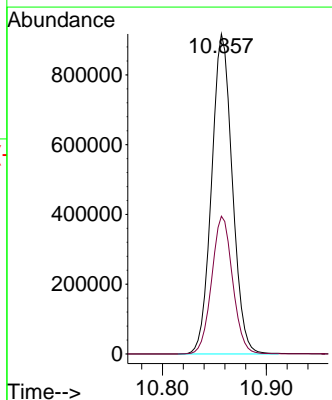
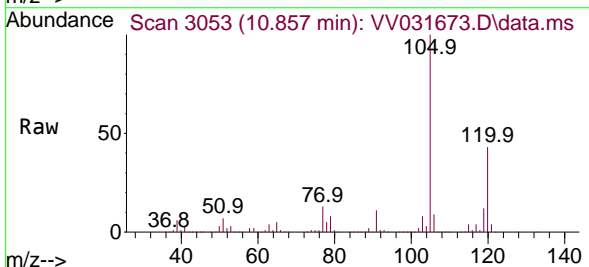
Instrument : MSVOA_V
 ClientSampleId : VSTD100242

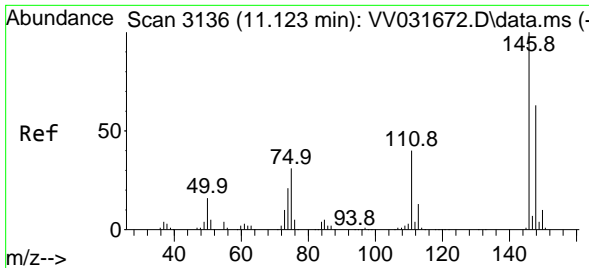
Tgt Ion:105 Resp: 1264170
 Ion Ratio Lower Upper
 105 100
 120 46.2 37.4 56.0



#63
 1,2,4-Trimethylbenzene
 Concen: 124.719 ug/L
 RT: 10.857 min Scan# 3053
 Delta R.T. 0.000 min
 Lab File: VV031673.D
 Acq: 11 Jul 2023 11:43

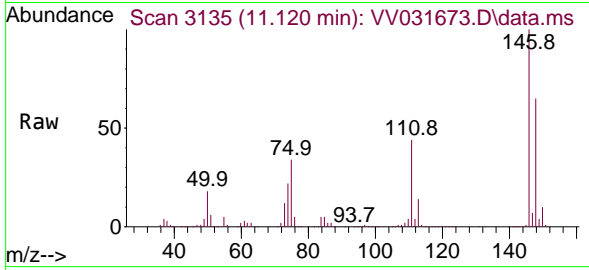
Tgt Ion:105 Resp: 1272525
 Ion Ratio Lower Upper
 105 100
 120 43.2 34.7 52.1



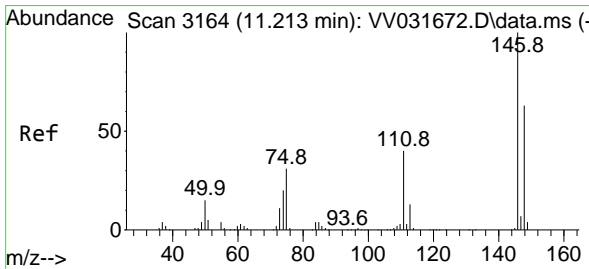
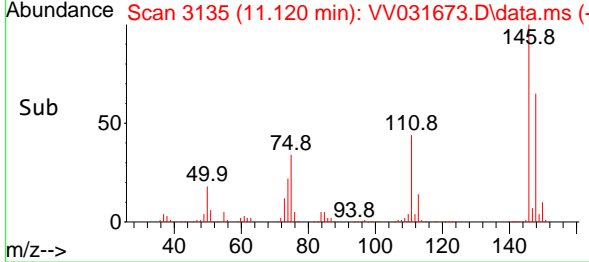
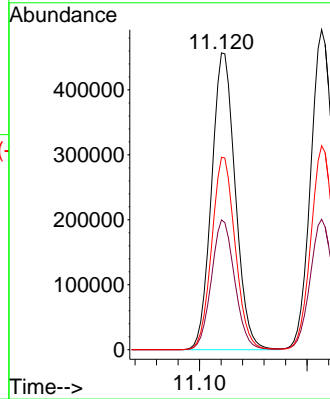


#64
 1,3-Dichlorobenzene
 Concen: 105.589 ug/L
 RT: 11.120 min Scan# 3135
 Delta R.T. -0.003 min
 Lab File: VV031673.D
 Acq: 11 Jul 2023 11:43

Instrument :
 MSVOA_V
 ClientSampleId :
 VSTD100242

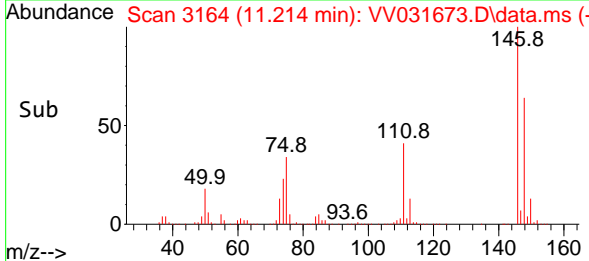
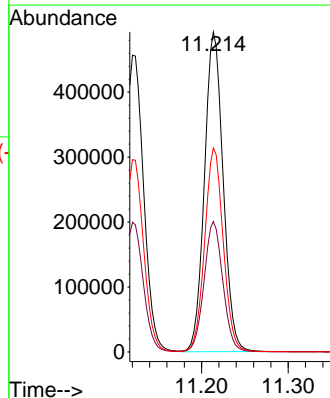
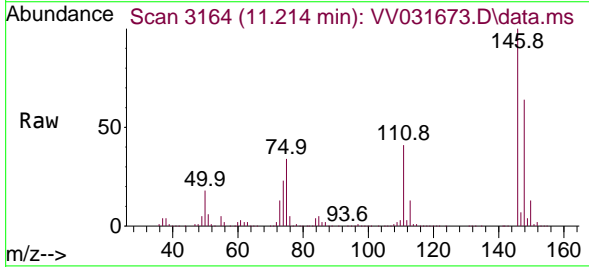


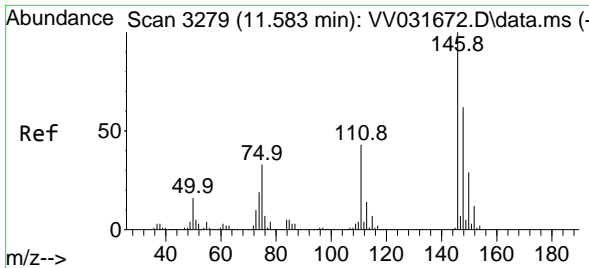
Tgt Ion:146 Resp: 700582
 Ion Ratio Lower Upper
 146 100
 111 43.7 28.3 52.5
 148 64.8 44.2 82.2



#65
 1,4-Dichlorobenzene
 Concen: 103.945 ug/L
 RT: 11.214 min Scan# 3164
 Delta R.T. 0.000 min
 Lab File: VV031673.D
 Acq: 11 Jul 2023 11:43

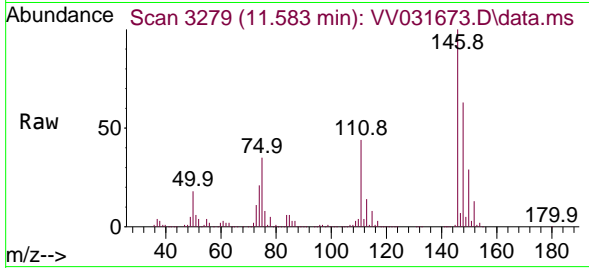
Tgt Ion:146 Resp: 736803
 Ion Ratio Lower Upper
 146 100
 111 40.7 28.3 52.7
 148 63.7 44.1 81.9



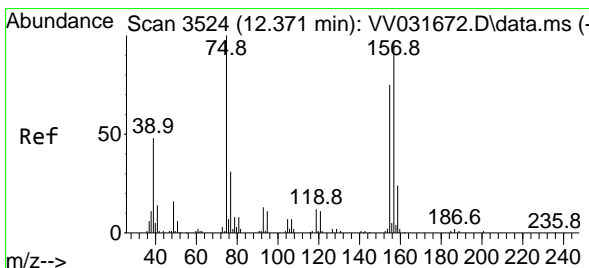
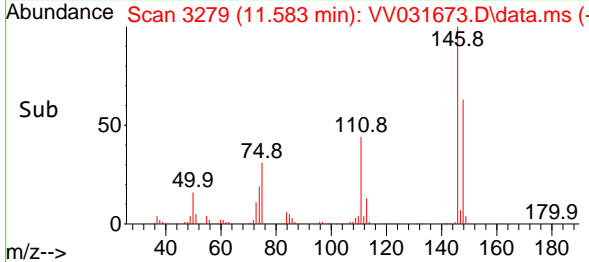
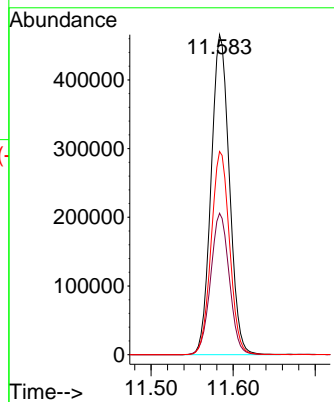


#67
 1,2-Dichlorobenzene
 Concen: 107.206 ug/L
 RT: 11.583 min Scan# 31
 Delta R.T. 0.000 min
 Lab File: VV031673.D
 Acq: 11 Jul 2023 11:43

Instrument : MSVOA_V
 ClientSampleId : VSTD100242

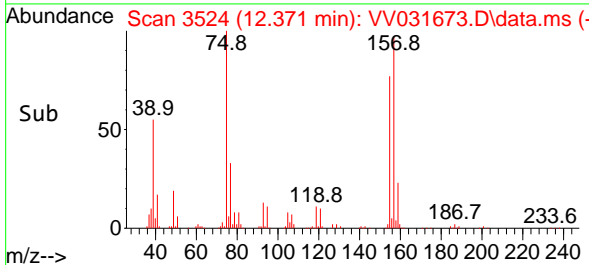
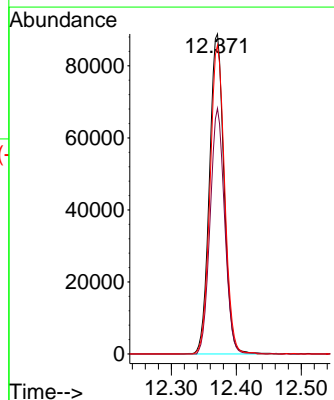
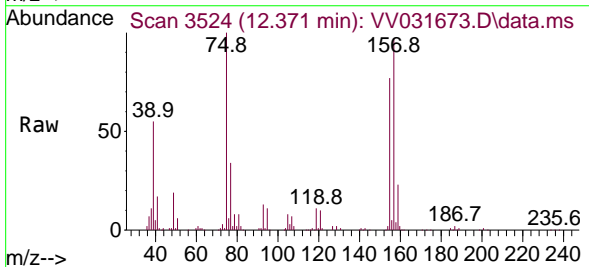


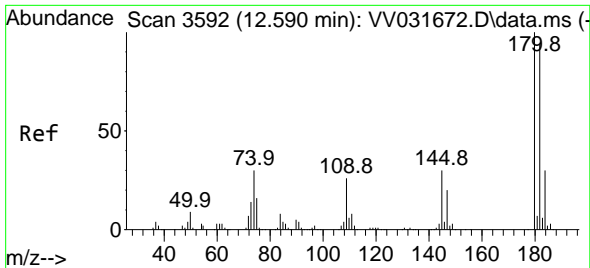
Tgt Ion:146 Resp: 719894
 Ion Ratio Lower Upper
 146 100
 111 44.2 34.8 52.2
 148 63.5 49.8 74.6



#68
 1,2-Dibromo-3-chloropropane
 Concen: 112.494 ug/L
 RT: 12.371 min Scan# 3524
 Delta R.T. 0.000 min
 Lab File: VV031673.D
 Acq: 11 Jul 2023 11:43

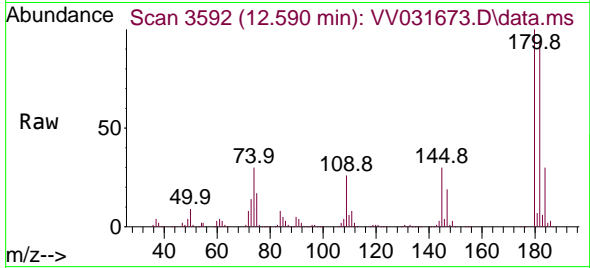
Tgt Ion: 75 Resp: 138923
 Ion Ratio Lower Upper
 75 100
 155 76.7 59.9 89.9
 157 96.5 77.6 116.4



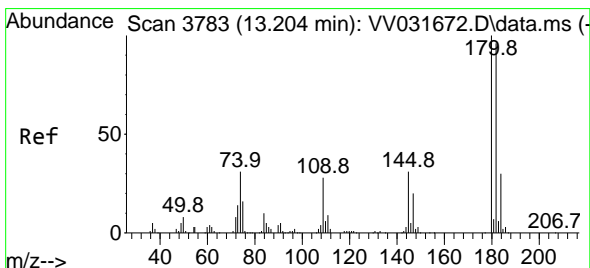
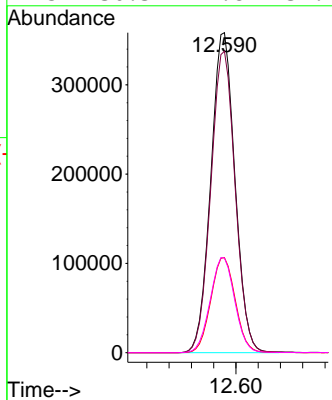
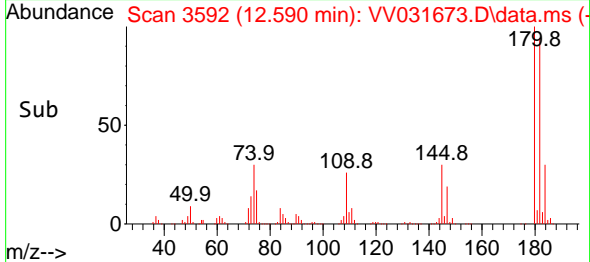


#69
 1,3,5-Trichlorobenzene
 Concen: 106.685 ug/L
 RT: 12.590 min Scan# 31
 Delta R.T. 0.000 min
 Lab File: VV031673.D
 Acq: 11 Jul 2023 11:43

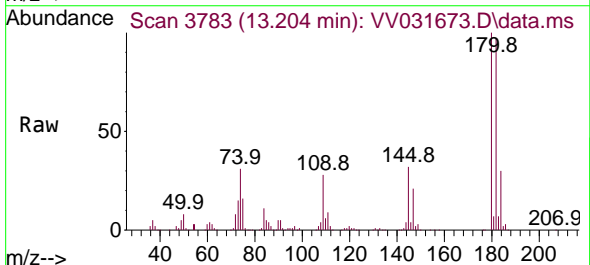
Instrument :
 MSVOA_V
 ClientSampleId :
 VSTD100242



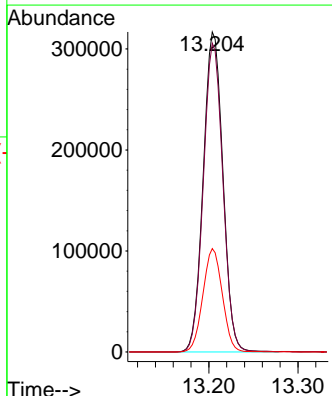
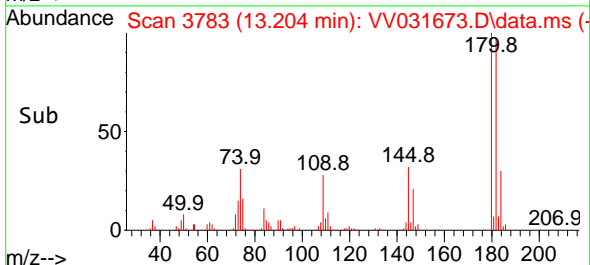
Tgt Ion:180 Resp: 539159
 Ion Ratio Lower Upper
 180 100
 182 95.2 75.5 113.3
 184 30.2 23.7 35.5
 145 30.3 24.8 37.2

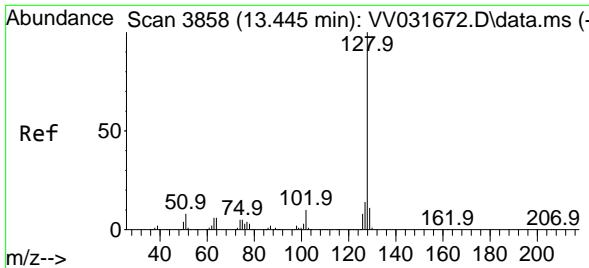


#70
 1,2,4-trichlorobenzene
 Concen: 109.941 ug/L
 RT: 13.204 min Scan# 3783
 Delta R.T. 0.000 min
 Lab File: VV031673.D
 Acq: 11 Jul 2023 11:43



Tgt Ion:180 Resp: 485012
 Ion Ratio Lower Upper
 180 100
 182 95.8 76.6 114.8
 145 31.9 25.4 38.2



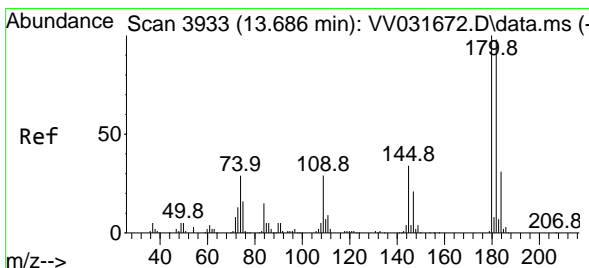
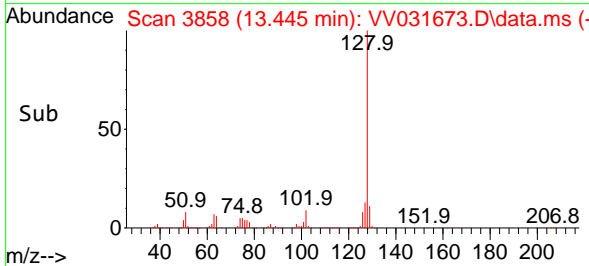
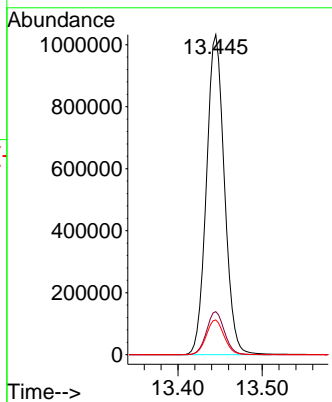
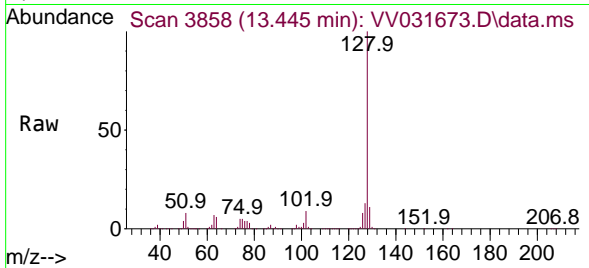


#71
 Naphthalene
 Concen: 134.937 ug/L
 RT: 13.445 min Scan# 3858
 Delta R.T. 0.000 min
 Lab File: VV031673.D
 Acq: 11 Jul 2023 11:43

Instrument : MSVOA_V
 ClientSampleId : VSTD100242

Tgt Ion:128 Resp: 1530797

| Ion | Ratio | Lower | Upper |
|-----|-------|-------|-------|
| 128 | 100 | | |
| 127 | 13.4 | 11.0 | 16.4 |
| 129 | 10.8 | 8.6 | 13.0 |



#72
 1,2,3-Trichlorobenzene
 Concen: 109.643 ug/L
 RT: 13.686 min Scan# 3933
 Delta R.T. 0.000 min
 Lab File: VV031673.D
 Acq: 11 Jul 2023 11:43

Tgt Ion:180 Resp: 502349

| Ion | Ratio | Lower | Upper |
|-----|-------|-------|-------|
| 180 | 100 | | |
| 182 | 95.8 | 76.7 | 115.1 |
| 145 | 34.1 | 27.7 | 41.5 |

