

Data Path : Z:\voasrv\HPCHEM1\MSVOA\_V\Data\VW071123\  
 Data File : VW031677.D  
 Acq On : 11 Jul 2023 13:30  
 Operator : SY/MD  
 Sample : VSTD01045  
 Misc : 5.0mL/MSVOA\_V/WATER  
 ALS Vial : 9 Sample Multiplier: 1

Instrument :  
 MSVOA\_V  
 ClientSampleId :  
 VSTD010245

Quant Time: Jul 12 07:41:56 2023  
 Quant Method : Z:\voasrv\HPCHEM1\MSVOA\_V\Method\SFAMVLM071123WMA.M  
 Quant Title : VOC Analysis  
 QLast Update : Wed Jul 12 07:24:21 2023  
 Response via : Initial Calibration

Compound	R.T.	QIon	Response	Conc	Units	Dev(Min)
Internal Standards						
1) 1,4-Difluorobenzene	5.538	114	256762	50.000	ug/L	0.00
28) Chlorobenzene-d5	8.789	117	312931	50.000	ug/L	0.00
58) 1,4-Dichlorobenzene-d4	11.191	152	170277	50.000	ug/L	0.00
System Monitoring Compounds						
4) Vinyl Chloride-d3	1.278	65	27454	15.183	ug/L	0.00
7) Chloroethane-d5	1.532	69	21880	14.048	ug/L	0.00
11) 1,1-Dichloroethene-d2	2.063	65	12813	13.984	ug/L	0.00
21) 2-Butanone-d5	3.809	46	33048	23.793	ug/L	0.01
24) Chloroform-d	4.256	84	53327	12.209	ug/L	0.00
26) 1,2-Dichloroethane-d4	4.953	65	33343	12.368	ug/L	0.00
32) Benzene-d6	4.966	84	86210	9.706	ug/L	0.00
36) 1,2-Dichloropropane-d6	5.995	67	24231	7.760	ug/L	0.00
41) Toluene-d8	7.249	98	67289	8.220	ug/L	0.00
43) trans-1,3-Dichloroprop...	7.564	79	13884	9.212	ug/L	0.00
47) 2-Hexanone-d5	8.037	63	16868	14.036	ug/L	0.00
56) 1,1,2,2-Tetrachloroeth...	10.159	84	45220	9.648	ug/L	0.00
66) 1,2-Dichlorobenzene-d4	11.567	152	29875	9.281	ug/L	0.00
Target Compounds						
						Qvalue
2) Dichlorodifluoromethane	1.108	85	34557	12.272	ug/L	97
3) Chloromethane	1.217	50	39099	14.666	ug/L	98
5) Vinyl chloride	1.285	62	36305	13.795	ug/L	98
6) Bromomethane	1.487	94	22650	13.408	ug/L	93
8) Chloroethane	1.551	64	21682	12.848	ug/L	100
9) Trichlorofluoromethane	1.715	101	49038	11.362	ug/L	96
10) 1,1,2-Trichloro-1,2,2-...	2.072	101	29830	12.716	ug/L	95
12) 1,1-Dichloroethene	2.072	96	25295	12.875	ug/L	93
13) Acetone	2.117	43	27332	19.918	ug/L	95
14) Carbon disulfide	2.243	76	84218	14.046	ug/L	100
15) Methyl Acetate	2.378	43	30114	12.906	ug/L	99
16) Methylene chloride	2.452	84	30064	12.373	ug/L	98
17) trans-1,2-Dichloroethene	2.699	96	24101	11.935	ug/L	98
18) Methyl tert-butyl Ether	2.706	73	66853	10.125	ug/L	95
19) 1,1-Dichloroethane	3.117	63	51157	11.834	ug/L	98
20) cis-1,2-Dichloroethene	3.821	96	23411	10.837	ug/L	90
22) 2-Butanone	3.892	43	29554	17.015	ug/L	80
23) Bromochloromethane	4.156	128	12933	10.909	ug/L	81
25) Chloroform	4.284	83	53695	11.939	ug/L	99
27) 1,2-Dichloroethane	5.053	62	32219	9.347	ug/L	98
29) Cyclohexane	4.590	56	33343	8.221	ug/L	99
30) 1,1,1-Trichloroethane	4.519	97	46953	9.398	ug/L	98
31) Carbon tetrachloride	4.741	117	39730	8.979	ug/L	97
33) Benzene	5.018	78	92945	8.920	ug/L	100
34) Trichloroethene	5.841	95	24243	8.599	ug/L	94
35) Methylcyclohexane	6.056	83	28803	7.063	ug/L	99
37) 1,2-Dichloropropane	6.101	63	21391	7.033	ug/L	# 92
38) Bromodichloromethane	6.442	83	31467	7.605	ug/L	99
39) cis-1,3-Dichloropropene	6.963	75	32571	7.248	ug/L	97
40) 4-Methyl-2-pentanone	7.165	43	48947	13.722	ug/L	98
42) Toluene	7.323	91	83588	7.715	ug/L	100
44) trans-1,3-Dichloropropene	7.590	75	38390	8.746	ug/L	95

Data Path : Z:\voasrv\HPCHEM1\MSVOA\_V\Data\VW071123\  
 Data File : VW031677.D  
 Acq On : 11 Jul 2023 13:30  
 Operator : SY/MD  
 Sample : VSTD01045  
 Misc : 5.0mL/MSVOA\_V/WATER  
 ALS Vial : 9 Sample Multiplier: 1

Instrument :  
 MSVOA\_V  
 ClientSampleId :  
 VSTD010245

Quant Time: Jul 12 07:41:56 2023  
 Quant Method : Z:\voasrv\HPCHEM1\MSVOA\_V\Method\SFAMVLM071123WMA.M  
 Quant Title : VOC Analysis  
 QLast Update : Wed Jul 12 07:24:21 2023  
 Response via : Initial Calibration

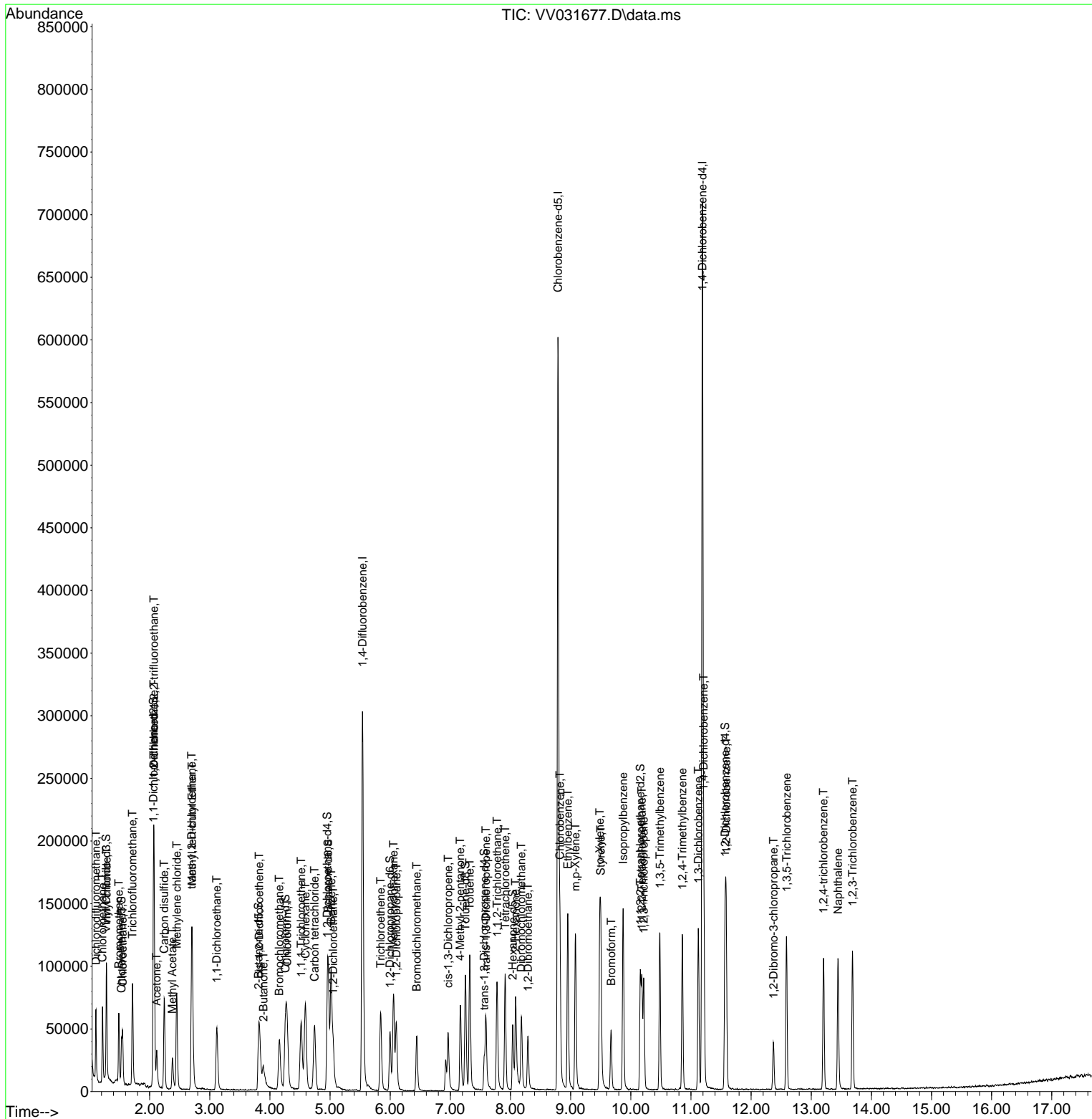
Compound	R.T.	QIon	Response	Conc	Units	Dev(Min)
45) 1,1,2-Trichloroethane	7.776	97	27364	9.437	ug/L	97
46) Tetrachloroethene	7.911	164	20925	9.511	ug/L	94
48) 2-Hexanone	8.085	43	47054	16.275	ug/L #	91
49) Dibromochloromethane	8.181	129	30105	9.318	ug/L	96
50) 1,2-Dibromoethane	8.291	107	30228	9.759	ug/L	99
51) Chlorobenzene	8.821	112	67527	9.430	ug/L	96
52) Ethylbenzene	8.953	91	94884	7.922	ug/L	96
53) m,p-Xylene	9.082	106	33503	7.571	ug/L	94
54) o-Xylene	9.484	106	31302	7.519	ug/L	99
55) Styrene	9.503	104	55638	7.388	ug/L	99
57) 1,1,2,2-Tetrachloroethane	10.185	83	42914	9.187	ug/L	99
59) Bromoform	9.673	173	21388	10.046	ug/L #	90
60) Isopropylbenzene	9.873	105	84355	7.868	ug/L	98
61) 1,2,3-Trichloropropane	10.217	75	36517	10.814	ug/L	96
62) 1,3,5-Trimethylbenzene	10.484	105	64378	7.297	ug/L	99
63) 1,2,4-Trimethylbenzene	10.857	105	63629	7.607	ug/L	96
64) 1,3-Dichlorobenzene	11.123	146	49821	9.159	ug/L	96
65) 1,4-Dichlorobenzene	11.213	146	55390	9.532	ug/L	98
67) 1,2-Dichlorobenzene	11.586	146	51203	9.301	ug/L	99
68) 1,2-Dibromo-3-chloropr...	12.374	75	10402	10.275	ug/L	92
69) 1,3,5-Trichlorobenzene	12.590	180	35566	8.585	ug/L	99
70) 1,2,4-trichlorobenzene	13.204	180	30269	8.370	ug/L	98
71) Naphthalene	13.445	128	78136	8.402	ug/L	98
72) 1,2,3-Trichlorobenzene	13.686	180	31146	8.292	ug/L	99

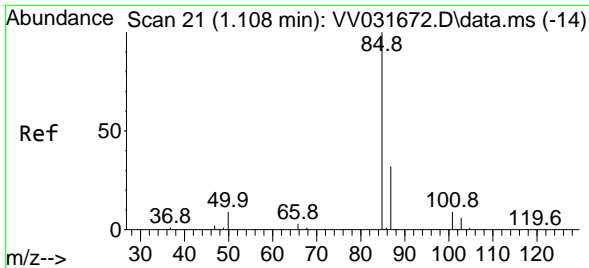
(#) = qualifier out of range (m) = manual integration (+) = signals summed

Data Path : Z:\voasrv\HPCHEM1\MSVOA\_V\Data\VV071123\  
 Data File : VV031677.D  
 Acq On : 11 Jul 2023 13:30  
 Operator : SY/MD  
 Sample : VSTD01045  
 Misc : 5.0mL/MSVOA\_V/WATER  
 ALS Vial : 9 Sample Multiplier: 1

Instrument :  
 MSVOA\_V  
 ClientSampleId :  
 VSTD010245

Quant Time: Jul 12 07:41:56 2023  
 Quant Method : Z:\voasrv\HPCHEM1\MSVOA\_V\Method\SFAMVLM071123WMA.M  
 Quant Title : VOC Analysis  
 QLast Update : Wed Jul 12 07:24:21 2023  
 Response via : Initial Calibration

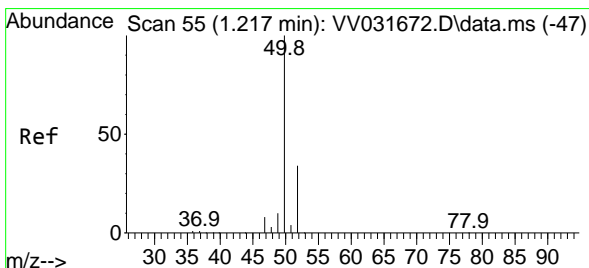
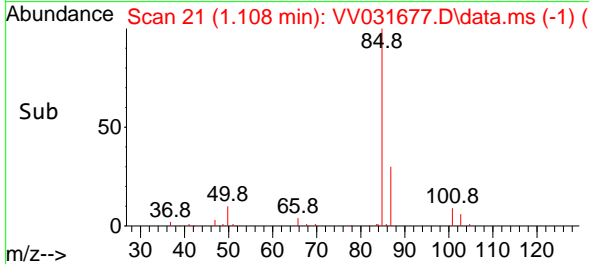
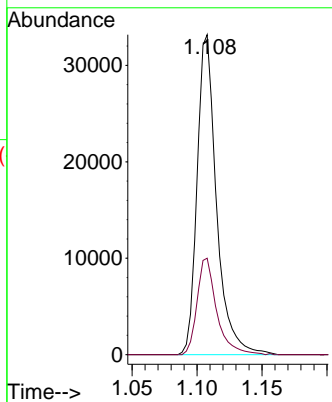
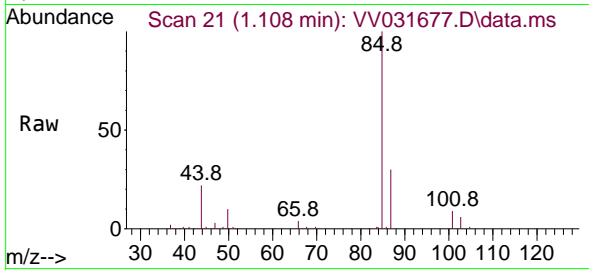




#2  
 Dichlorodifluoromethane  
 Concen: 12.272 ug/L  
 RT: 1.108 min Scan# 21  
 Delta R.T. 0.000 min  
 Lab File: VV031677.D  
 Acq: 11 Jul 2023 13:30

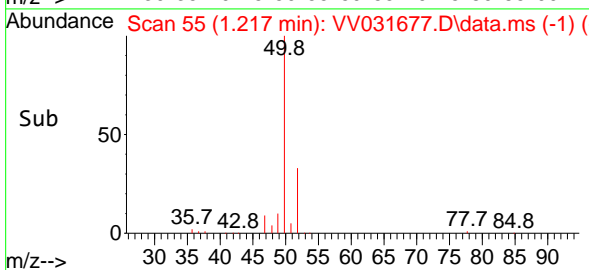
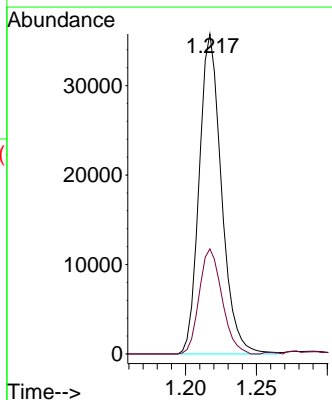
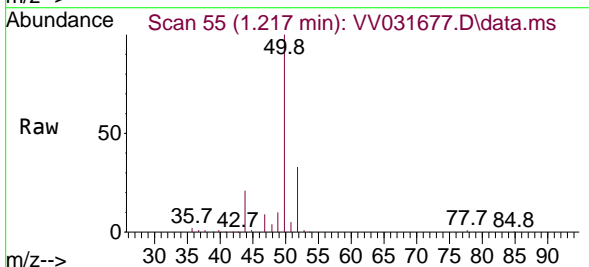
Instrument :  
 MSVOA\_V  
 ClientSampleId :  
 VSTD010245

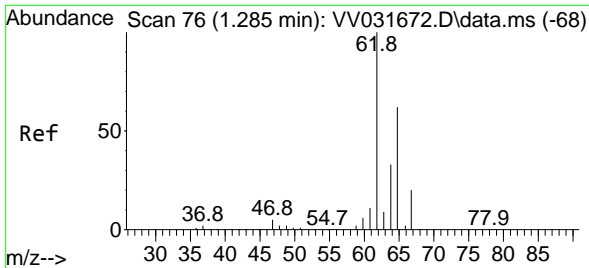
Tgt Ion: 85 Resp: 34557  
 Ion Ratio Lower Upper  
 85 100  
 87 30.5 25.8 38.6



#3  
 Chloromethane  
 Concen: 14.666 ug/L  
 RT: 1.217 min Scan# 55  
 Delta R.T. 0.000 min  
 Lab File: VV031677.D  
 Acq: 11 Jul 2023 13:30

Tgt Ion: 50 Resp: 39099  
 Ion Ratio Lower Upper  
 50 100  
 52 32.9 23.7 44.1

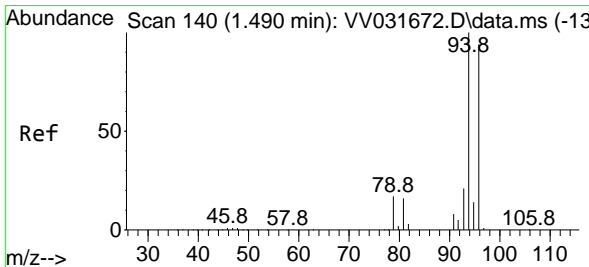
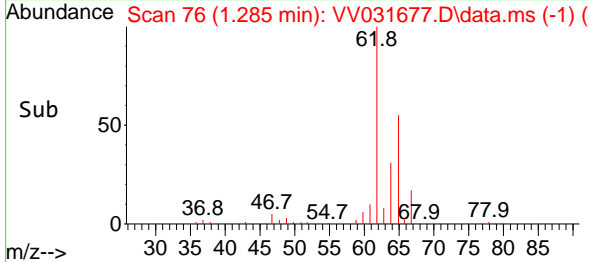
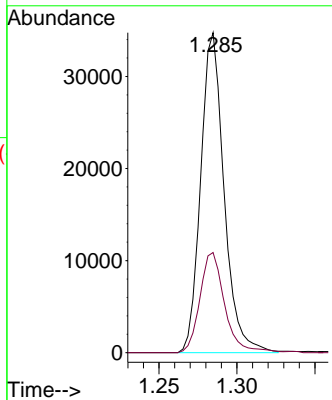
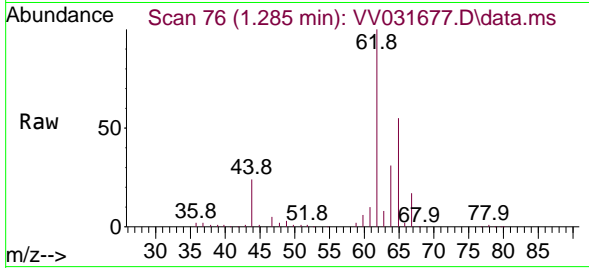




#5  
 Vinyl chloride  
 Concen: 13.795 ug/L  
 RT: 1.285 min Scan# 70  
 Delta R.T. 0.000 min  
 Lab File: VV031677.D  
 Acq: 11 Jul 2023 13:30

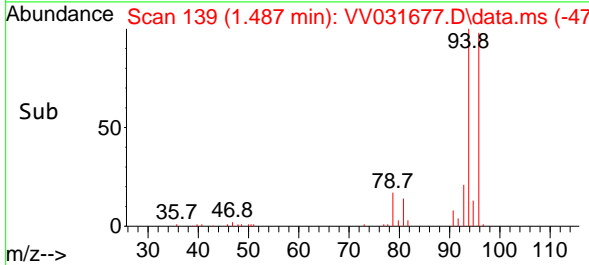
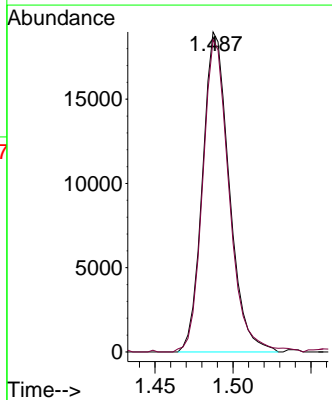
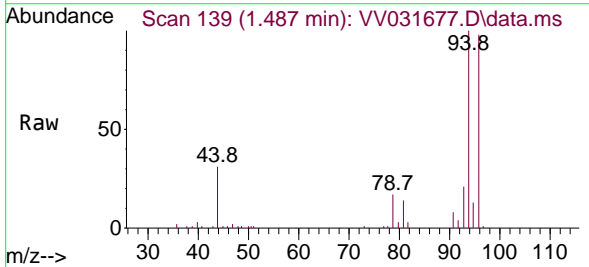
Instrument :  
 MSVOA\_V  
 ClientSampleId :  
 VSTD010245

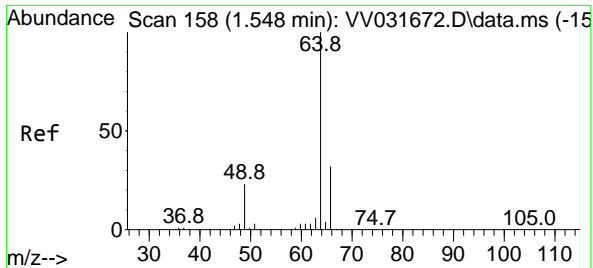
Tgt Ion: 62 Resp: 36305  
 Ion Ratio Lower Upper  
 62 100  
 64 31.3 22.9 42.5



#6  
 Bromomethane  
 Concen: 13.408 ug/L  
 RT: 1.487 min Scan# 139  
 Delta R.T. -0.003 min  
 Lab File: VV031677.D  
 Acq: 11 Jul 2023 13:30

Tgt Ion: 94 Resp: 22650  
 Ion Ratio Lower Upper  
 94 100  
 96 86.9 65.7 121.9

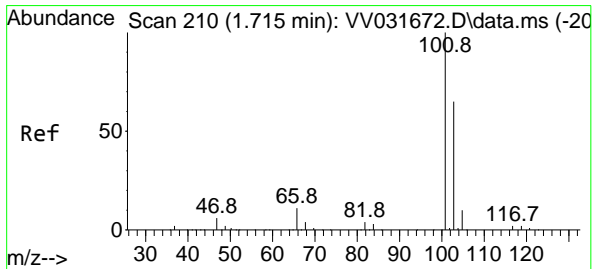
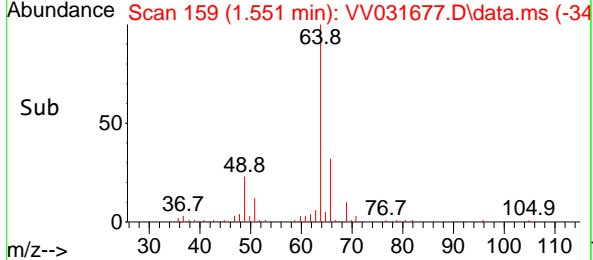
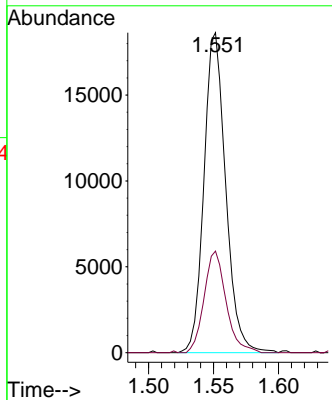
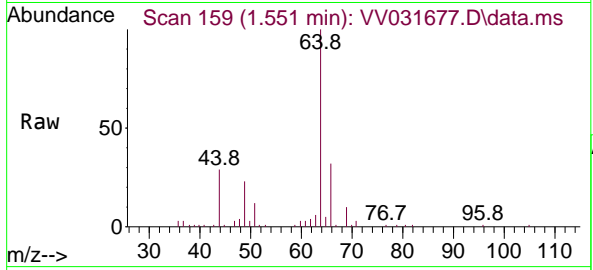




#8  
 Chloroethane  
 Concen: 12.848 ug/L  
 RT: 1.551 min Scan# 11  
 Delta R.T. 0.003 min  
 Lab File: VV031677.D  
 Acq: 11 Jul 2023 13:30

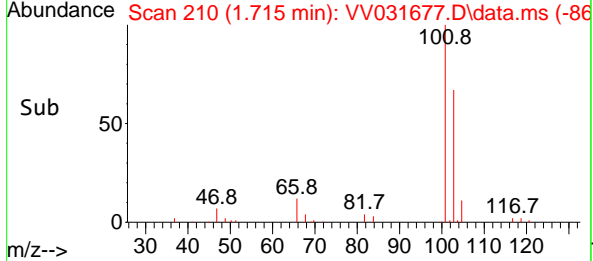
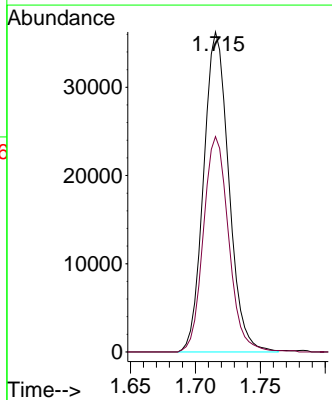
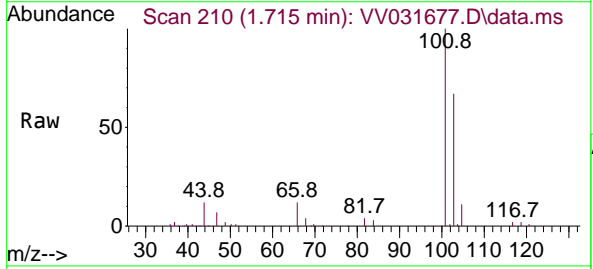
Instrument : MSVOA\_V  
 ClientSampleId : VSTD010245

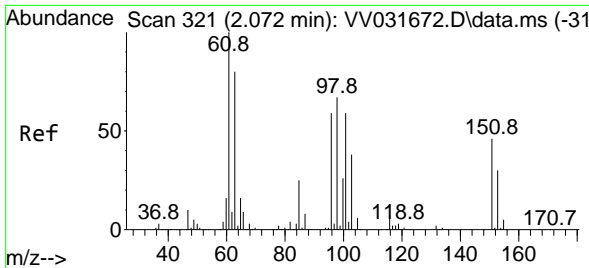
Tgt Ion: 64 Resp: 21682  
 Ion Ratio Lower Upper  
 64 100  
 66 31.8 22.4 41.6



#9  
 Trichlorofluoromethane  
 Concen: 11.362 ug/L  
 RT: 1.715 min Scan# 210  
 Delta R.T. 0.000 min  
 Lab File: VV031677.D  
 Acq: 11 Jul 2023 13:30

Tgt Ion:101 Resp: 49038  
 Ion Ratio Lower Upper  
 101 100  
 103 67.4 51.7 77.5

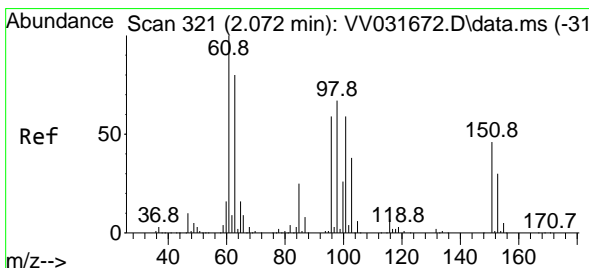
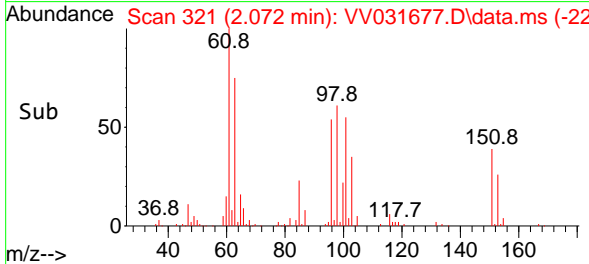
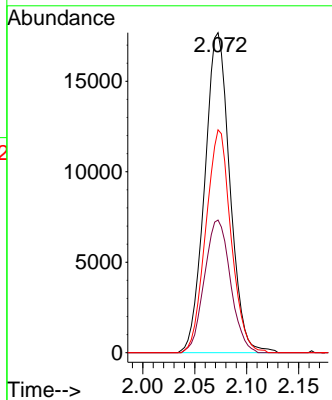
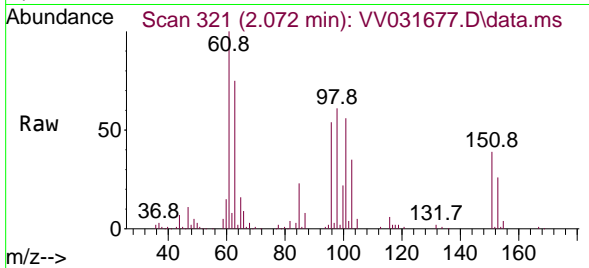




#10  
 1,1,2-Trichloro-1,2,2-trifluoroethane  
 Concen: 12.716 ug/L  
 RT: 2.072 min Scan# 311  
 Delta R.T. 0.000 min  
 Lab File: VV031677.D  
 Acq: 11 Jul 2023 13:30

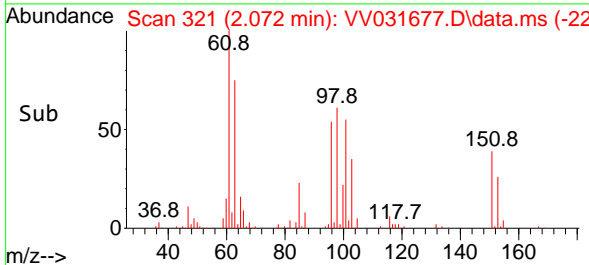
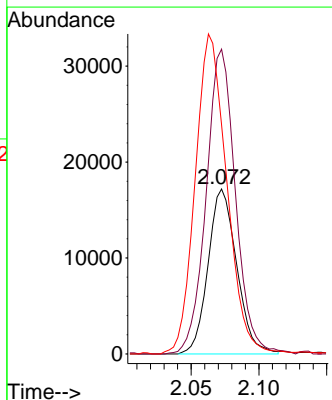
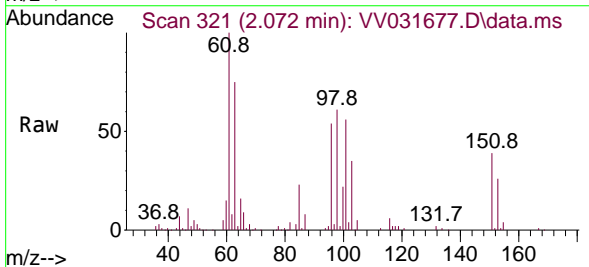
Instrument :  
 MSVOA\_V  
 ClientSampleId :  
 VSTD010245

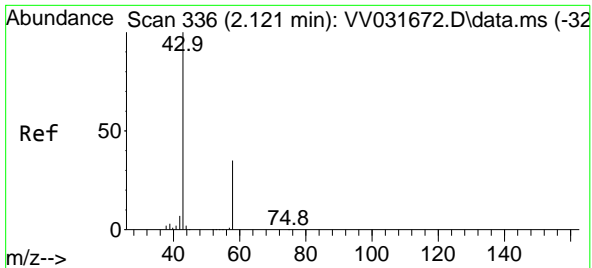
Tgt Ion:101 Resp: 29830  
 Ion Ratio Lower Upper  
 101 100  
 85 42.8 33.9 50.9  
 151 69.6 61.0 91.6



#12  
 1,1-Dichloroethene  
 Concen: 12.875 ug/L  
 RT: 2.072 min Scan# 321  
 Delta R.T. 0.000 min  
 Lab File: VV031677.D  
 Acq: 11 Jul 2023 13:30

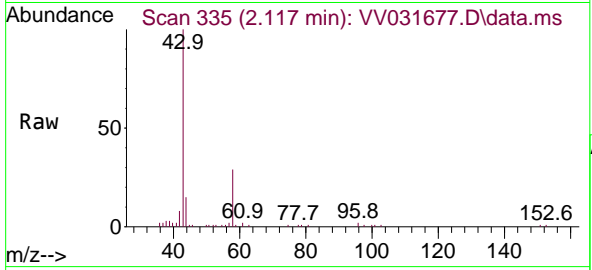
Tgt Ion: 96 Resp: 25295  
 Ion Ratio Lower Upper  
 96 100  
 61 184.7 118.3 219.7  
 63 139.0 96.8 179.8



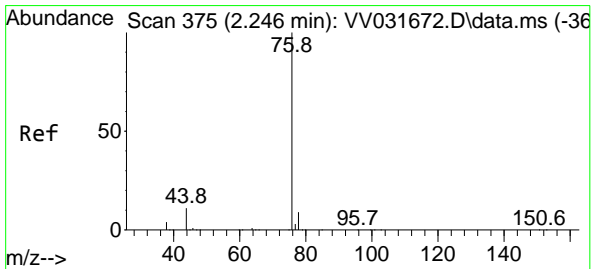
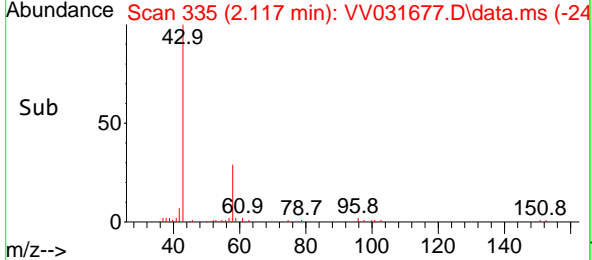
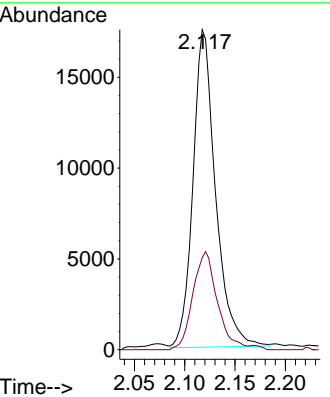


#13  
 Acetone  
 Concen: 19.918 ug/L  
 RT: 2.117 min Scan# 311  
 Delta R.T. -0.003 min  
 Lab File: VV031677.D  
 Acq: 11 Jul 2023 13:30

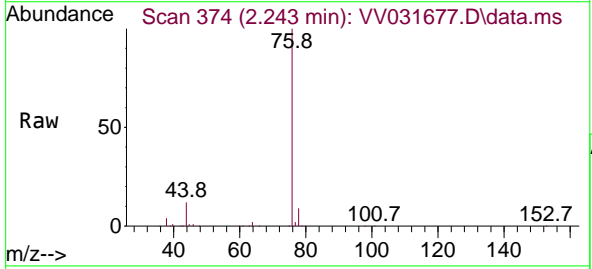
Instrument : MSVOA\_V  
 ClientSampleId : VSTD010245



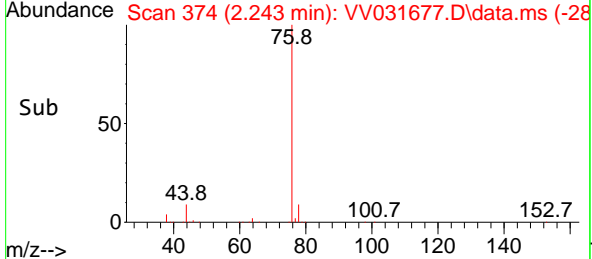
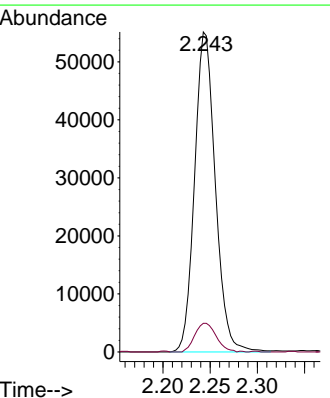
Tgt Ion: 43 Resp: 27332  
 Ion Ratio Lower Upper  
 43 100  
 58 33.3 0.0 72.0



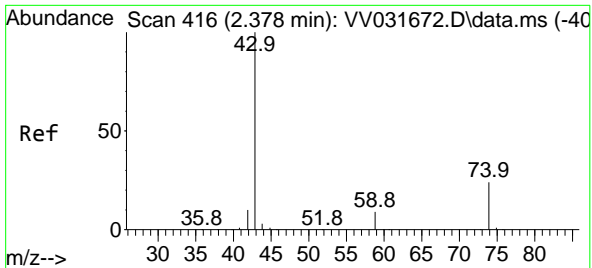
#14  
 Carbon disulfide  
 Concen: 14.046 ug/L  
 RT: 2.243 min Scan# 374  
 Delta R.T. -0.003 min  
 Lab File: VV031677.D  
 Acq: 11 Jul 2023 13:30



Tgt Ion: 76 Resp: 84218  
 Ion Ratio Lower Upper  
 76 100  
 78 9.2 7.4 11.0





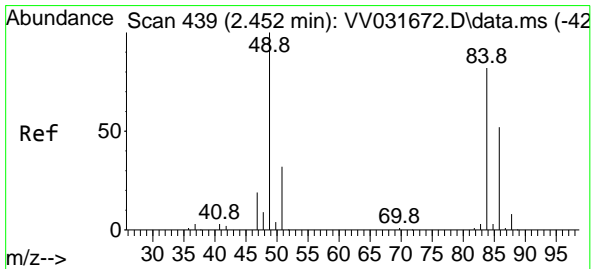
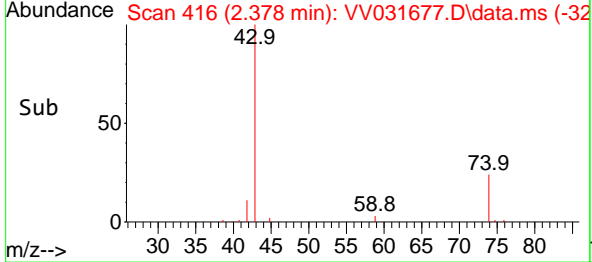
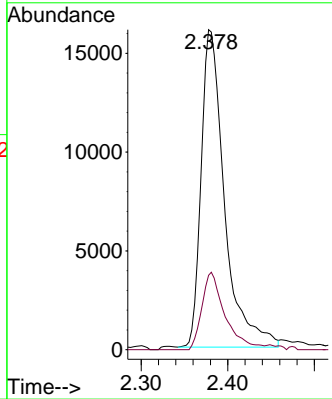
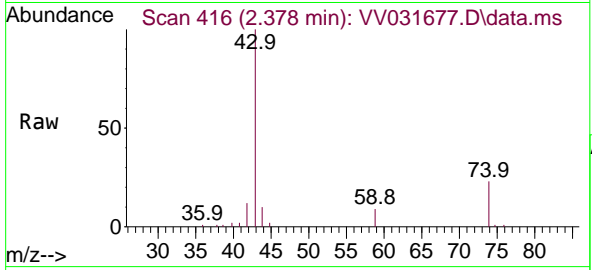


#15  
 Methyl Acetate  
 Concen: 12.906 ug/L  
 RT: 2.378 min Scan# 411  
 Delta R.T. 0.000 min  
 Lab File: VV031677.D  
 Acq: 11 Jul 2023 13:30

Instrument : MSVOA\_V  
 ClientSampleId : VSTD010245

Tgt Ion: 43 Resp: 30114

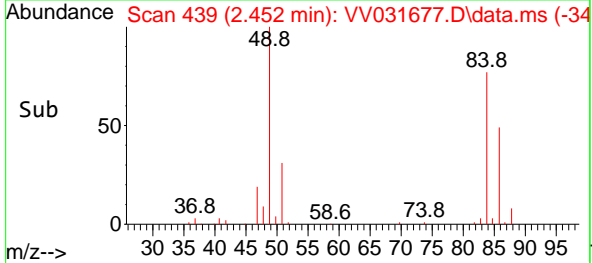
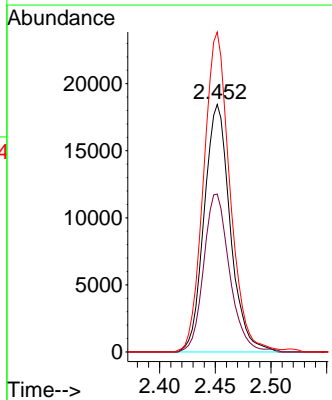
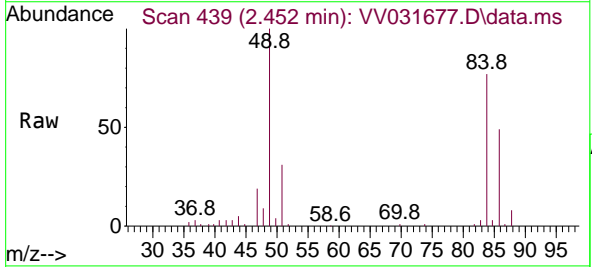
Ion	Ratio	Lower	Upper
43	100		
74	24.1	19.5	29.3

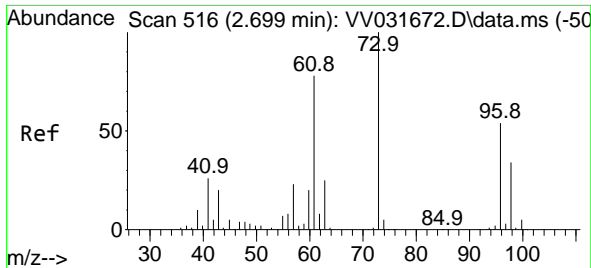


#16  
 Methylene chloride  
 Concen: 12.373 ug/L  
 RT: 2.452 min Scan# 439  
 Delta R.T. 0.000 min  
 Lab File: VV031677.D  
 Acq: 11 Jul 2023 13:30

Tgt Ion: 84 Resp: 30064

Ion	Ratio	Lower	Upper
84	100		
86	62.7	44.5	82.7
49	124.7	85.3	158.5





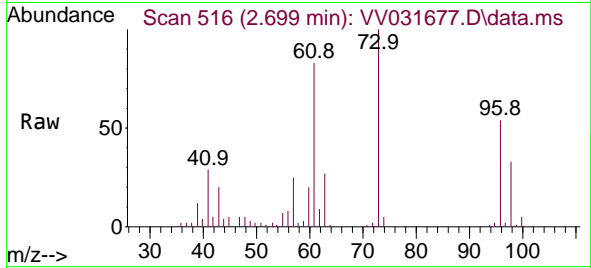
#17  
 trans-1,2-Dichloroethene  
 Concen: 11.935 ug/L  
 RT: 2.699 min Scan# 517  
 Delta R.T. 0.000 min  
 Lab File: VV031677.D  
 Acq: 11 Jul 2023 13:30

Instrument :

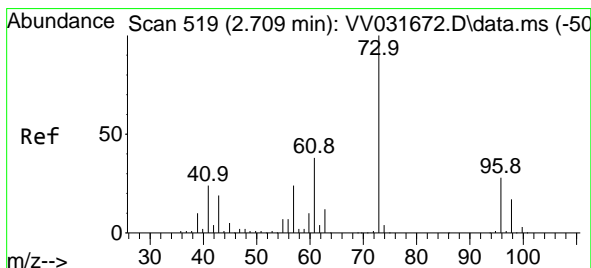
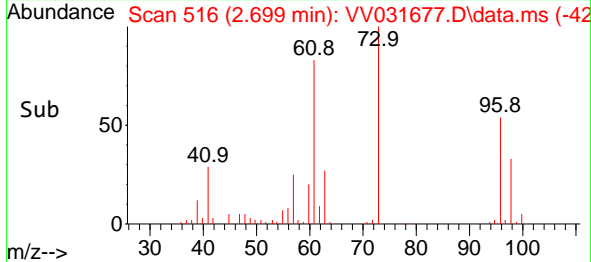
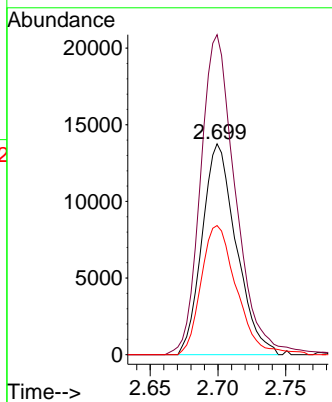
MSVOA\_V

ClientSampleId :

VSTD010245

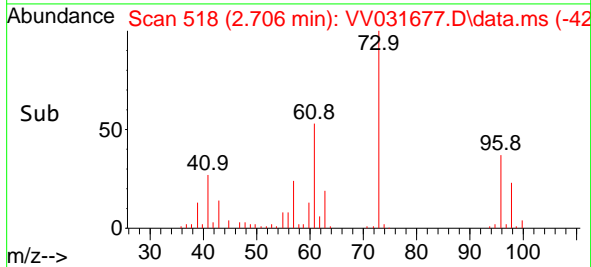
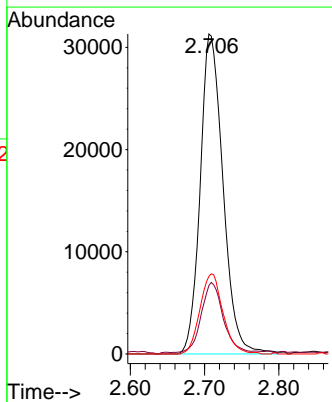
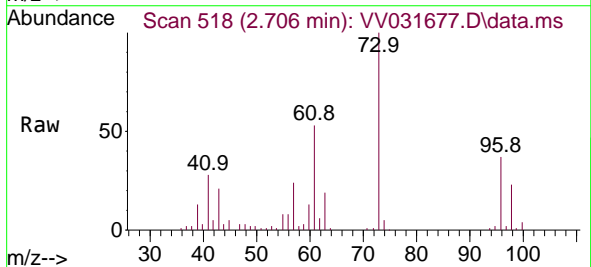


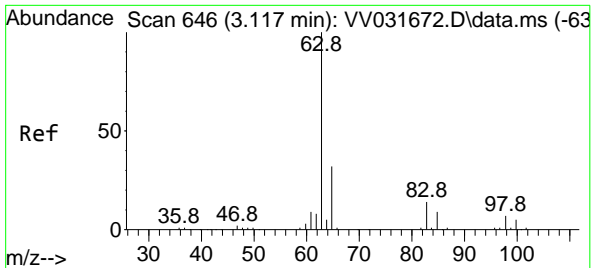
Tgt Ion: 96 Resp: 24101  
 Ion Ratio Lower Upper  
 96 100  
 61 145.6 101.6 188.6  
 98 58.7 44.7 82.9



#18  
 Methyl tert-butyl Ether  
 Concen: 10.125 ug/L  
 RT: 2.706 min Scan# 518  
 Delta R.T. -0.003 min  
 Lab File: VV031677.D  
 Acq: 11 Jul 2023 13:30

Tgt Ion: 73 Resp: 66853  
 Ion Ratio Lower Upper  
 73 100  
 43 20.6 15.0 22.4  
 57 25.2 18.3 27.5



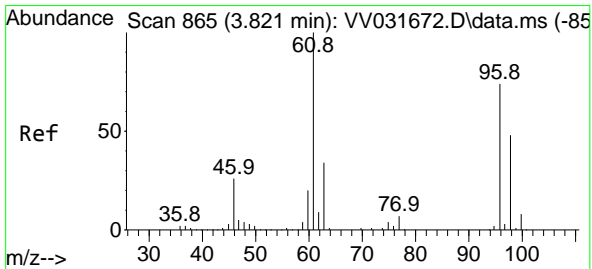
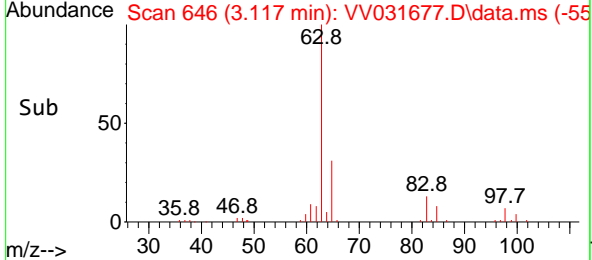
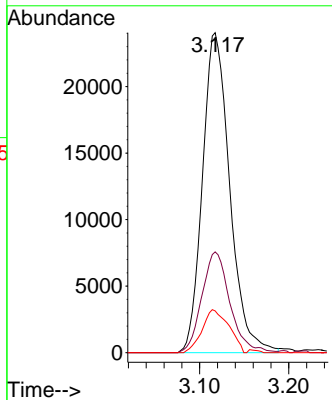
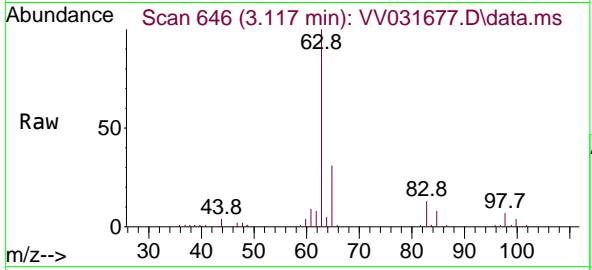


#19  
 1,1-Dichloroethane  
 Concen: 11.834 ug/L  
 RT: 3.117 min Scan# 64  
 Delta R.T. 0.000 min  
 Lab File: VV031677.D  
 Acq: 11 Jul 2023 13:30

Instrument : MSVOA\_V  
 ClientSampleId : VSTD010245

Tgt Ion: 63 Resp: 51157

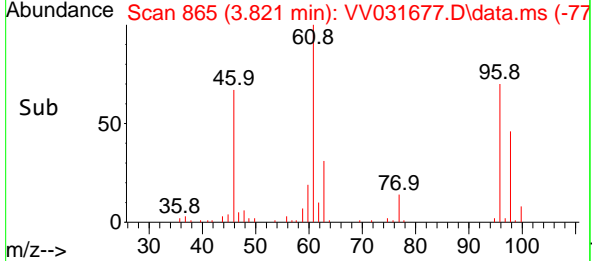
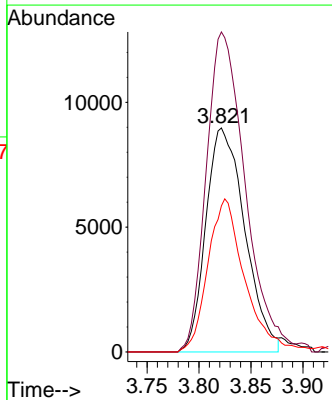
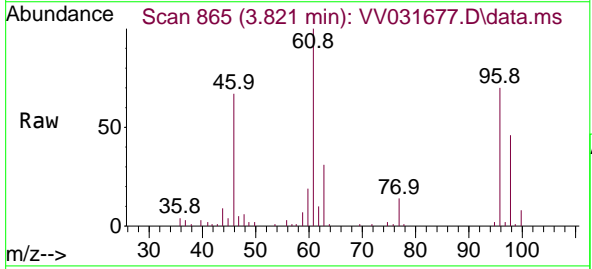
Ion	Ratio	Lower	Upper
63	100		
65	31.5	22.3	41.5
83	13.7	10.6	19.6

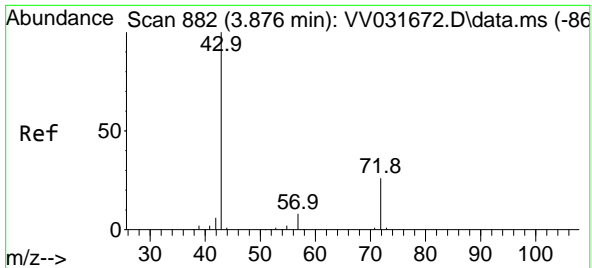


#20  
 cis-1,2-Dichloroethene  
 Concen: 10.837 ug/L  
 RT: 3.821 min Scan# 865  
 Delta R.T. 0.000 min  
 Lab File: VV031677.D  
 Acq: 11 Jul 2023 13:30

Tgt Ion: 96 Resp: 23411

Ion	Ratio	Lower	Upper
96	100		
61	142.8	90.6	168.2
98	67.2	43.8	81.3

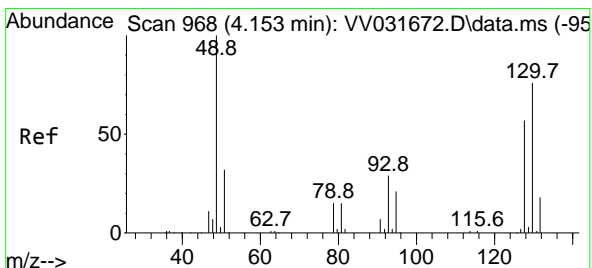
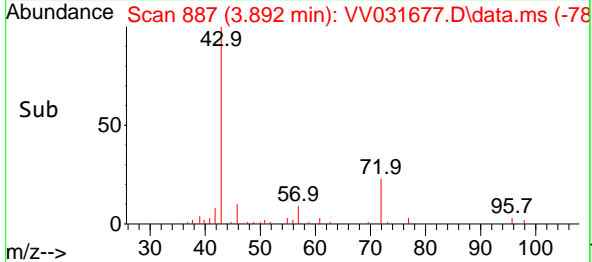
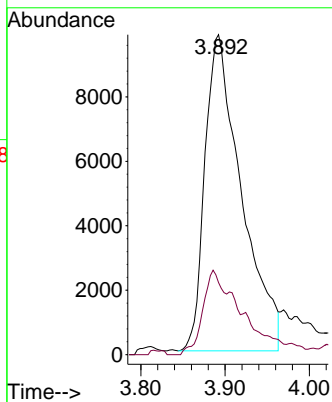
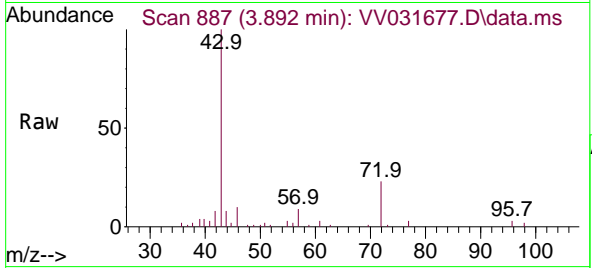




#22  
 2-Butanone  
 Concen: 17.015 ug/L  
 RT: 3.892 min Scan# 887  
 Delta R.T. 0.016 min  
 Lab File: VV031677.D  
 Acq: 11 Jul 2023 13:30

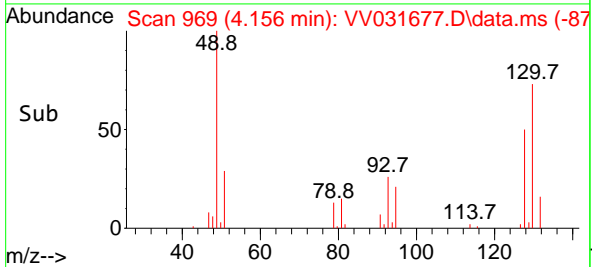
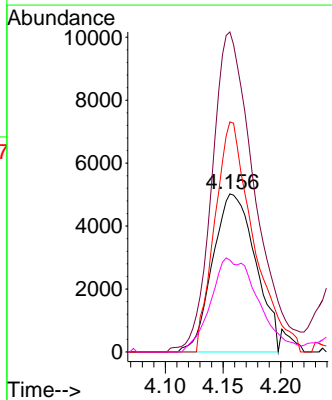
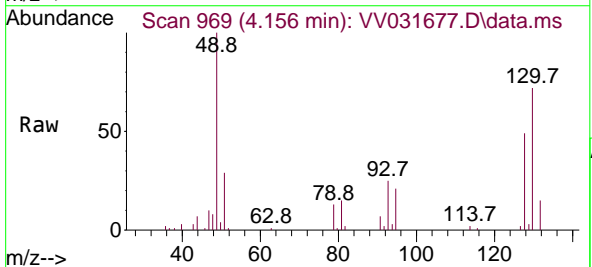
Instrument : MSVOA\_V  
 ClientSampleId : VSTD010245

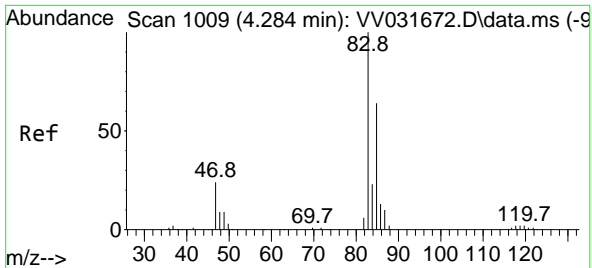
Tgt Ion: 43 Resp: 29554  
 Ion Ratio Lower Upper  
 43 100  
 72 15.3 12.7 38.0



#23  
 Bromochloromethane  
 Concen: 10.909 ug/L  
 RT: 4.156 min Scan# 969  
 Delta R.T. 0.003 min  
 Lab File: VV031677.D  
 Acq: 11 Jul 2023 13:30

Tgt Ion:128 Resp: 12933  
 Ion Ratio Lower Upper  
 128 100  
 49 202.4 117.9 218.9  
 130 145.5 89.1 165.5  
 51 58.1 42.8 64.2

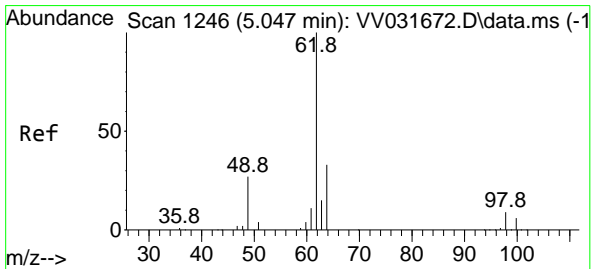
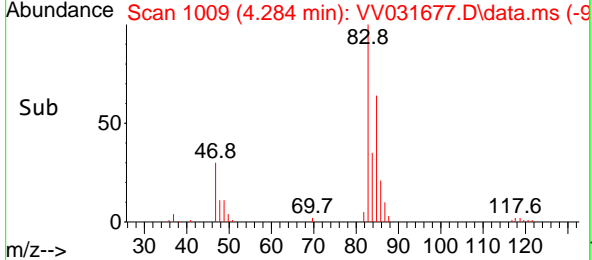
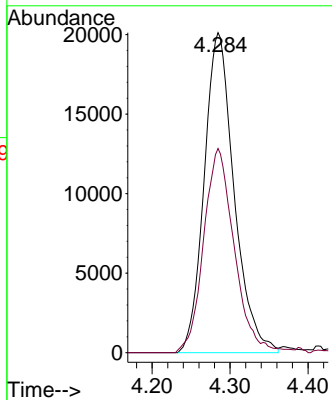
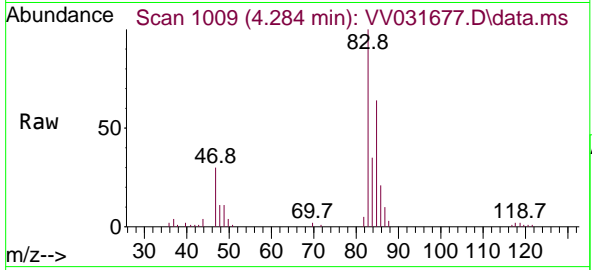




#25  
 Chloroform  
 Concen: 11.939 ug/L  
 RT: 4.284 min Scan# 1009  
 Delta R.T. 0.000 min  
 Lab File: VV031677.D  
 Acq: 11 Jul 2023 13:30

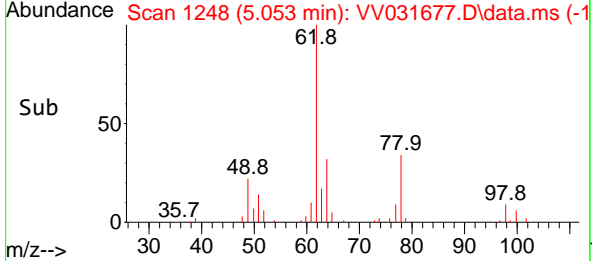
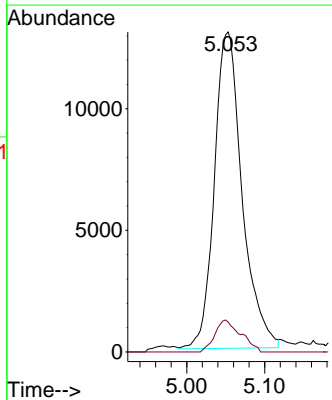
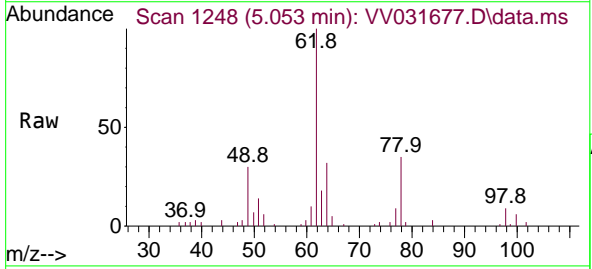
Instrument : MSVOA\_V  
 ClientSampleId : VSTD010245

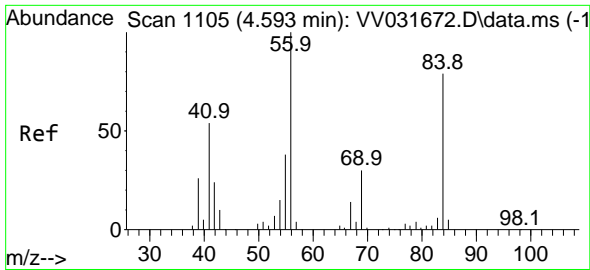
Tgt Ion: 83 Resp: 53695  
 Ion Ratio Lower Upper  
 83 100  
 85 63.8 45.1 83.9



#27  
 1,2-Dichloroethane  
 Concen: 9.347 ug/L  
 RT: 5.053 min Scan# 1248  
 Delta R.T. 0.006 min  
 Lab File: VV031677.D  
 Acq: 11 Jul 2023 13:30

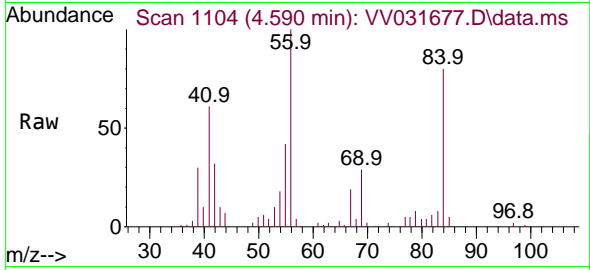
Tgt Ion: 62 Resp: 32219  
 Ion Ratio Lower Upper  
 62 100  
 98 10.1 7.5 11.3



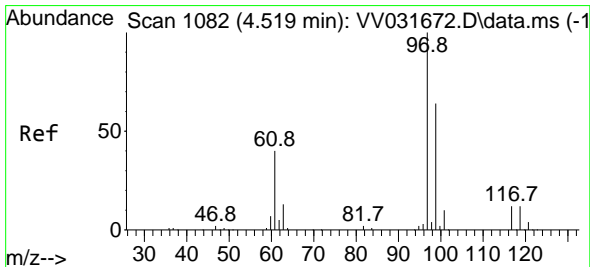
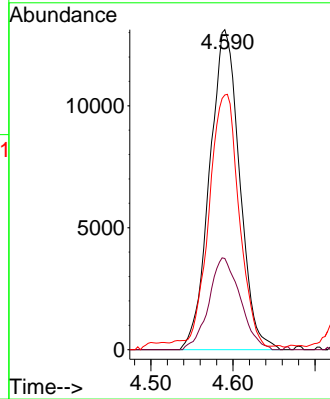
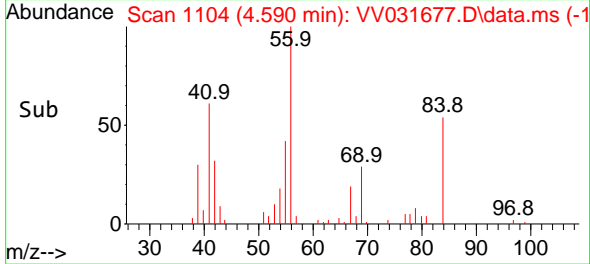


#29  
 Cyclohexane  
 Concen: 8.221 ug/L  
 RT: 4.590 min Scan# 1104  
 Delta R.T. -0.003 min  
 Lab File: VV031677.D  
 Acq: 11 Jul 2023 13:30

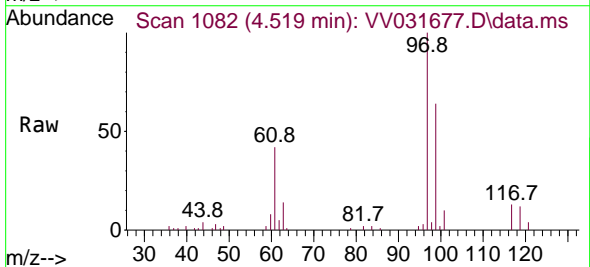
Instrument : MSVOA\_V  
 ClientSampleId : VSTD010245



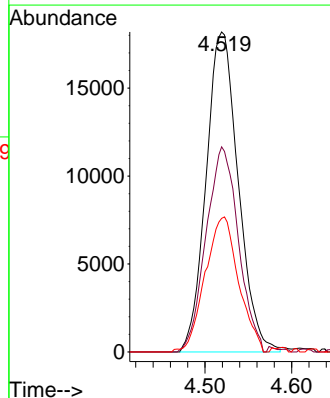
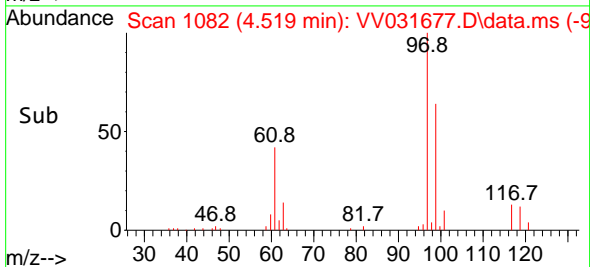
Tgt Ion: 56 Resp: 33343  
 Ion Ratio Lower Upper  
 56 100  
 69 29.9 24.1 36.1  
 84 77.9 63.6 95.4

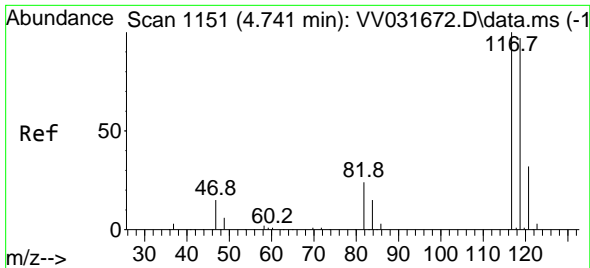


#30  
 1,1,1-Trichloroethane  
 Concen: 9.398 ug/L  
 RT: 4.519 min Scan# 1082  
 Delta R.T. 0.000 min  
 Lab File: VV031677.D  
 Acq: 11 Jul 2023 13:30



Tgt Ion: 97 Resp: 46953  
 Ion Ratio Lower Upper  
 97 100  
 99 64.4 51.5 77.3  
 61 43.8 32.2 48.2

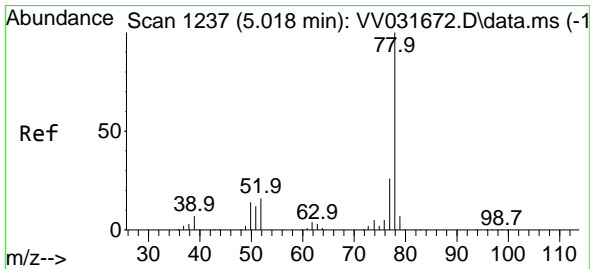
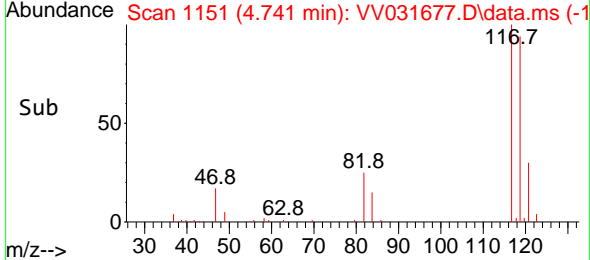
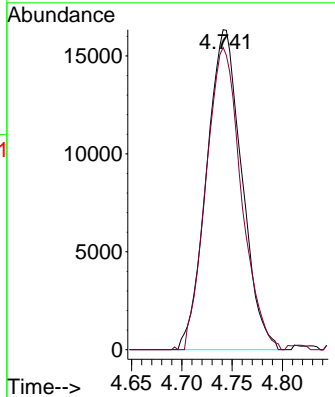
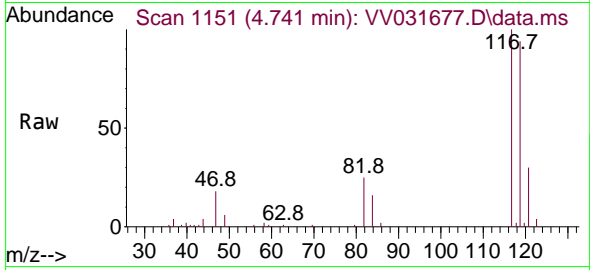




#31  
 Carbon tetrachloride  
 Concen: 8.979 ug/L  
 RT: 4.741 min Scan# 1151  
 Delta R.T. 0.000 min  
 Lab File: VV031677.D  
 Acq: 11 Jul 2023 13:30

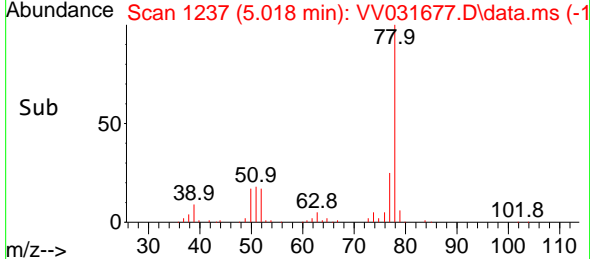
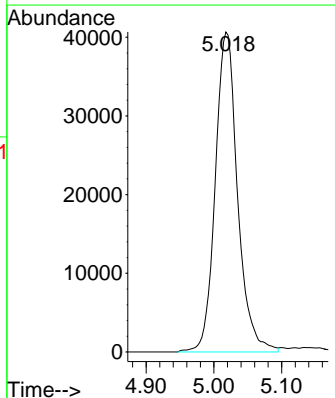
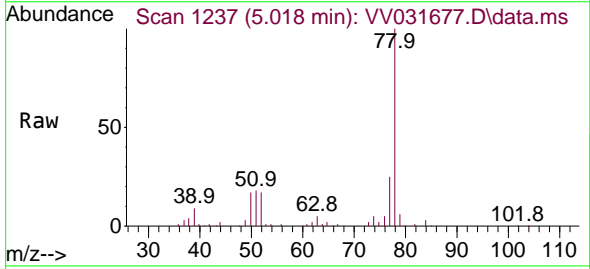
Instrument : MSVOA\_V  
 ClientSampleId : VSTD010245

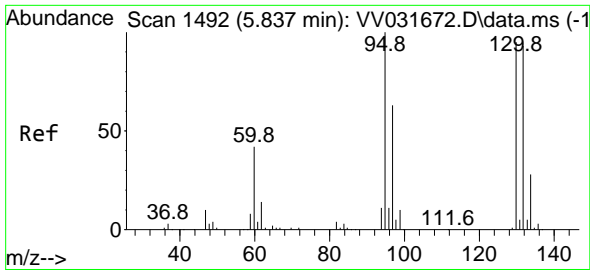
Tgt Ion:117 Resp: 39730  
 Ion Ratio Lower Upper  
 117 100  
 119 94.5 78.0 117.0



#33  
 Benzene  
 Concen: 8.920 ug/L  
 RT: 5.018 min Scan# 1237  
 Delta R.T. 0.000 min  
 Lab File: VV031677.D  
 Acq: 11 Jul 2023 13:30

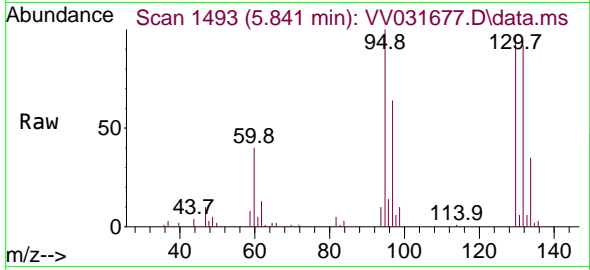
Tgt Ion: 78 Resp: 92945



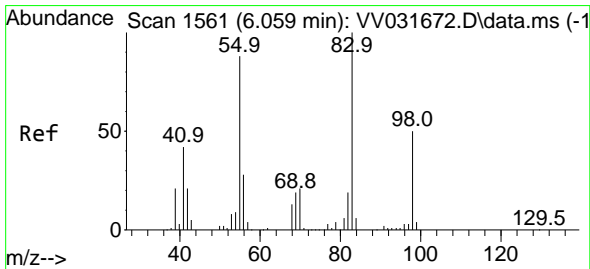
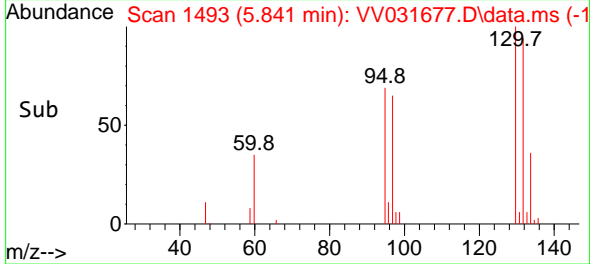
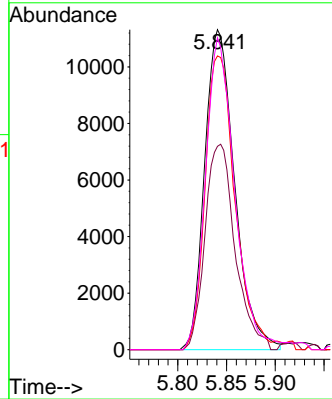


#34  
 Trichloroethene  
 Concen: 8.599 ug/L  
 RT: 5.841 min Scan# 1493  
 Delta R.T. 0.003 min  
 Lab File: VV031677.D  
 Acq: 11 Jul 2023 13:30

Instrument : MSVOA\_V  
 ClientSampleId : VSTD010245

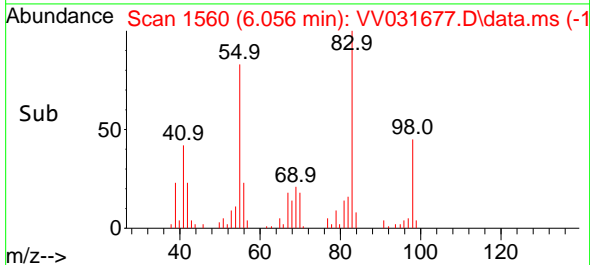
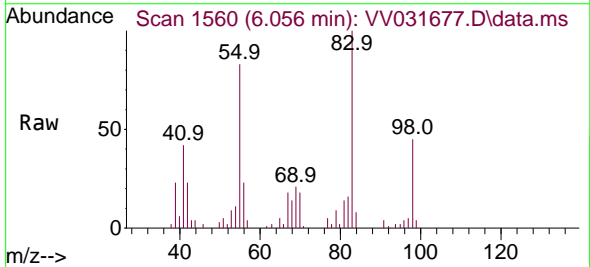
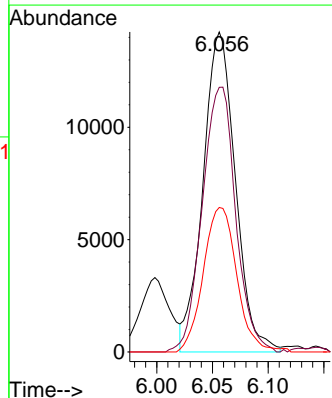


Tgt Ion: 95 Resp: 24243  
 Ion Ratio Lower Upper  
 95 100  
 97 61.3 47.0 87.2  
 132 85.7 64.8 120.4  
 130 91.1 66.4 123.4

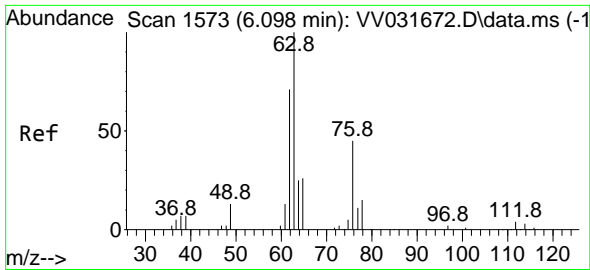


#35  
 Methylcyclohexane  
 Concen: 7.063 ug/L  
 RT: 6.056 min Scan# 1560  
 Delta R.T. -0.003 min  
 Lab File: VV031677.D  
 Acq: 11 Jul 2023 13:30

Tgt Ion: 83 Resp: 28803  
 Ion Ratio Lower Upper  
 83 100  
 55 85.5 69.4 104.2  
 98 46.7 38.2 57.2



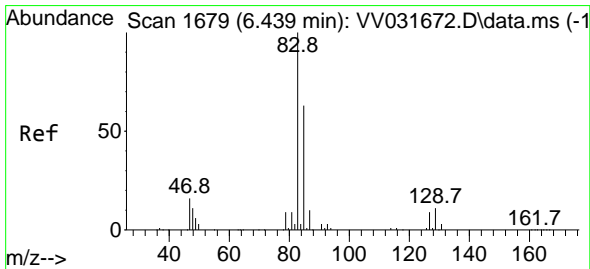
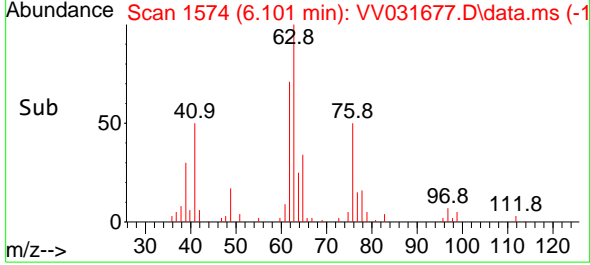
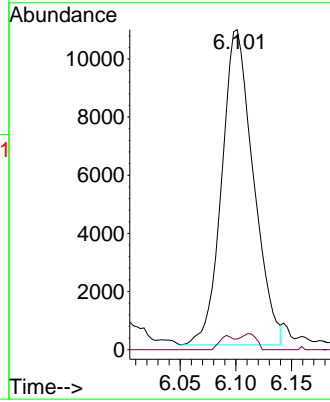
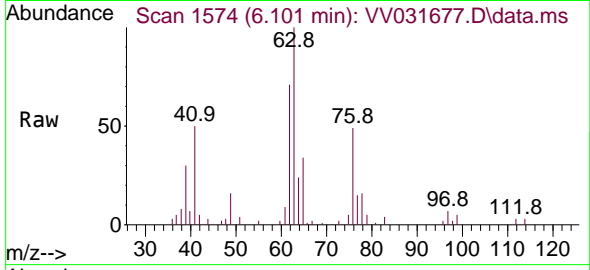




#37  
 1,2-Dichloropropane  
 Concen: 7.033 ug/L  
 RT: 6.101 min Scan# 11  
 Delta R.T. 0.003 min  
 Lab File: VV031677.D  
 Acq: 11 Jul 2023 13:30

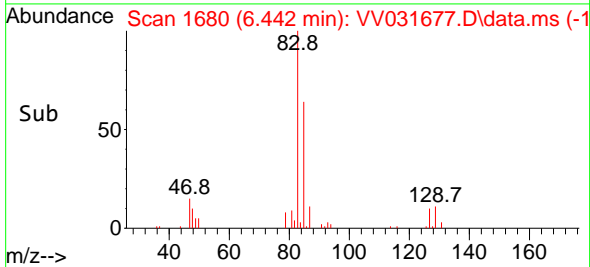
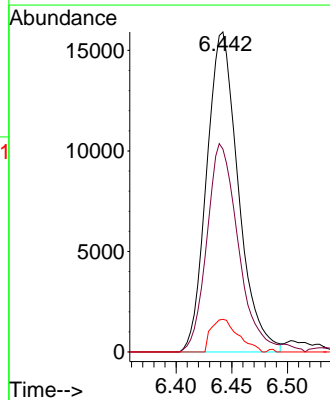
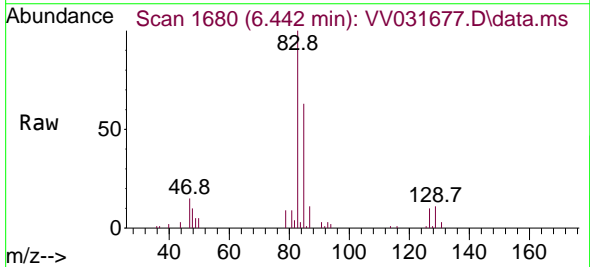
Instrument :  
 MSVOA\_V  
 ClientSampleId :  
 VSTD010245

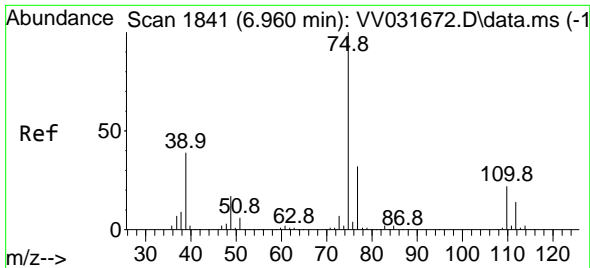
Tgt Ion: 63 Resp: 21391  
 Ion Ratio Lower Upper  
 63 100  
 112 1.9 3.7 5.5#



#38  
 Bromodichloromethane  
 Concen: 7.605 ug/L  
 RT: 6.442 min Scan# 1680  
 Delta R.T. 0.003 min  
 Lab File: VV031677.D  
 Acq: 11 Jul 2023 13:30

Tgt Ion: 83 Resp: 31467  
 Ion Ratio Lower Upper  
 83 100  
 85 62.5 44.2 82.0  
 127 10.9 7.8 11.6

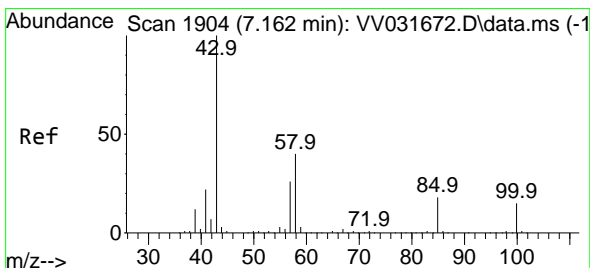
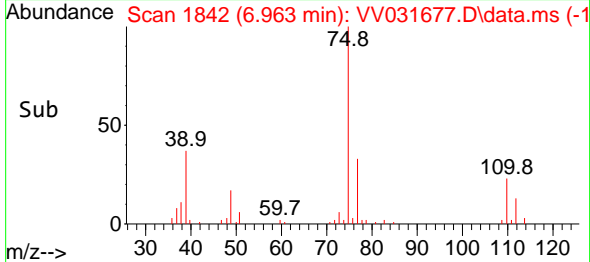
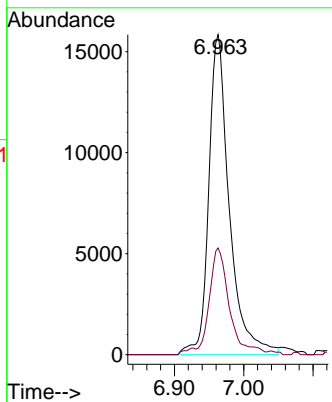
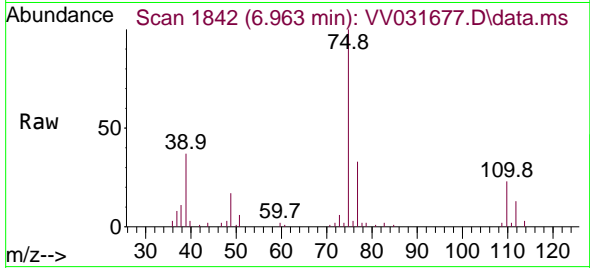




#39  
 cis-1,3-Dichloropropene  
 Concen: 7.248 ug/L  
 RT: 6.963 min Scan# 1842  
 Delta R.T. 0.003 min  
 Lab File: VV031677.D  
 Acq: 11 Jul 2023 13:30

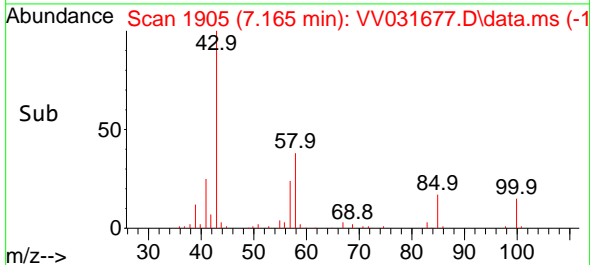
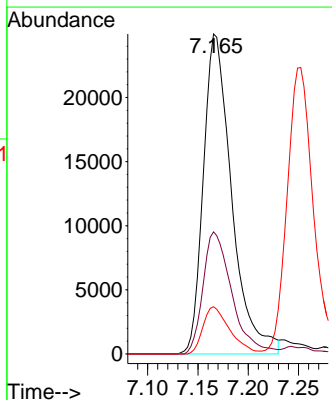
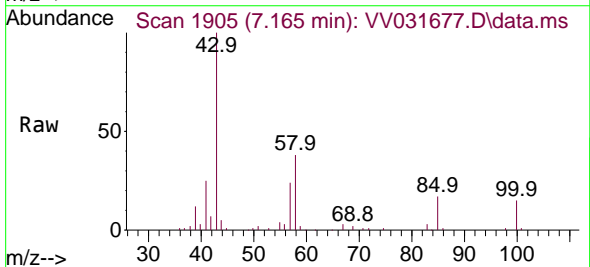
Instrument : MSVOA\_V  
 ClientSampleId : VSTD010245

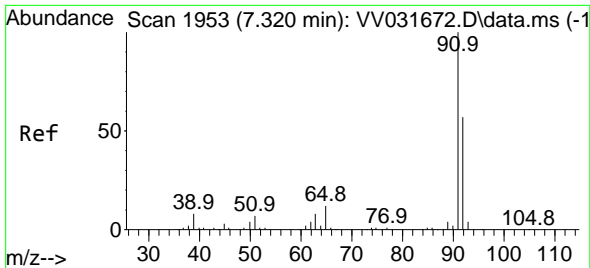
Tgt Ion: 75 Resp: 32571  
 Ion Ratio Lower Upper  
 75 100  
 77 33.3 22.1 41.1



#40  
 4-Methyl-2-pentanone  
 Concen: 13.722 ug/L  
 RT: 7.165 min Scan# 1905  
 Delta R.T. 0.003 min  
 Lab File: VV031677.D  
 Acq: 11 Jul 2023 13:30

Tgt Ion: 43 Resp: 48947  
 Ion Ratio Lower Upper  
 43 100  
 58 38.8 32.1 48.1  
 100 14.0 12.1 18.1

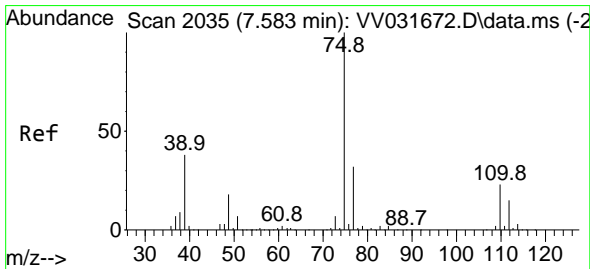
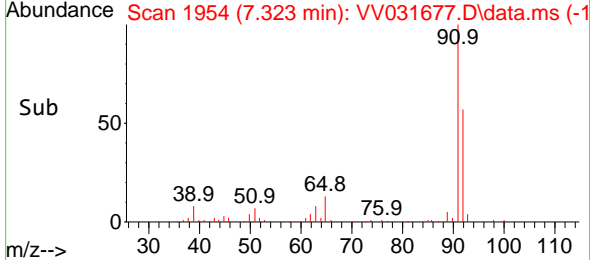
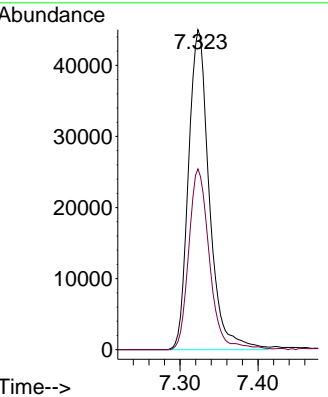
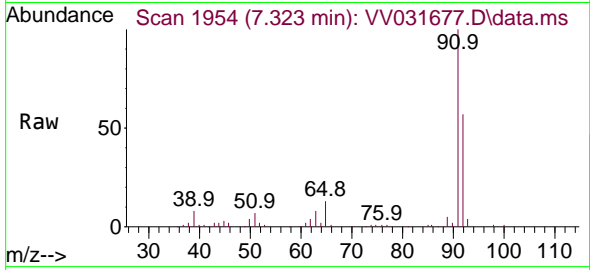




#42  
 Toluene  
 Concen: 7.715 ug/L  
 RT: 7.323 min Scan# 1953  
 Delta R.T. 0.003 min  
 Lab File: VV031677.D  
 Acq: 11 Jul 2023 13:30

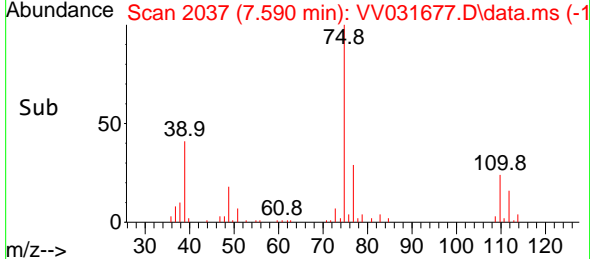
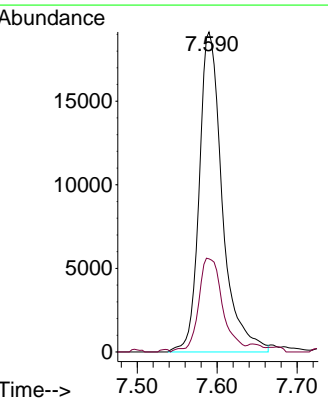
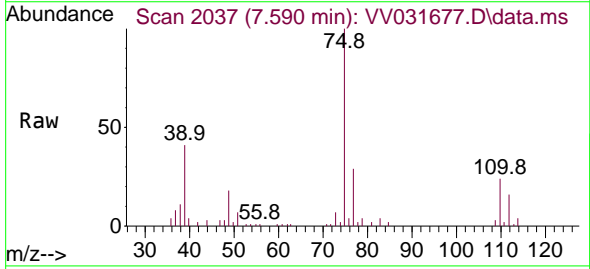
Instrument : MSVOA\_V  
 ClientSampleId : VSTD010245

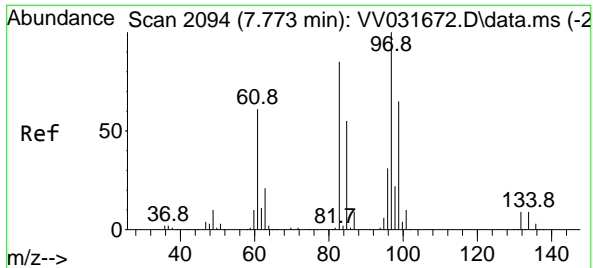
Tgt Ion: 91 Resp: 83588  
 Ion Ratio Lower Upper  
 91 100  
 92 56.5 39.8 73.8



#44  
 trans-1,3-Dichloropropene  
 Concen: 8.746 ug/L  
 RT: 7.590 min Scan# 2037  
 Delta R.T. 0.006 min  
 Lab File: VV031677.D  
 Acq: 11 Jul 2023 13:30

Tgt Ion: 75 Resp: 38390  
 Ion Ratio Lower Upper  
 75 100  
 77 29.1 22.3 41.3



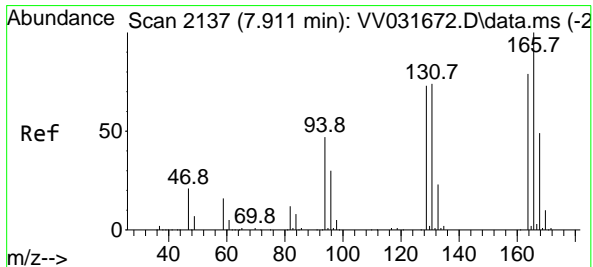
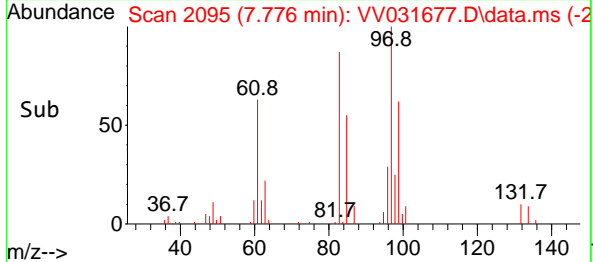
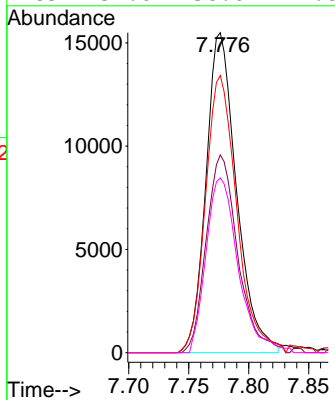
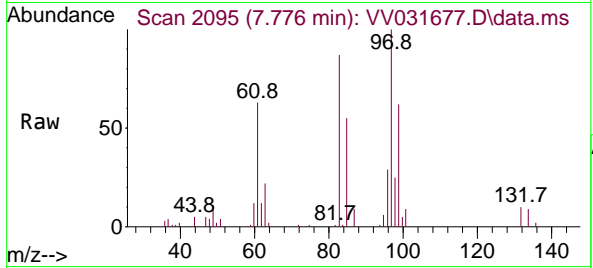


#45  
 1,1,2-Trichloroethane  
 Concen: 9.437 ug/L  
 RT: 7.776 min Scan# 2094  
 Delta R.T. 0.003 min  
 Lab File: VV031677.D  
 Acq: 11 Jul 2023 13:30

Instrument : MSVOA\_V  
 ClientSampleId : VSTD010245

Tgt Ion: 97 Resp: 27364

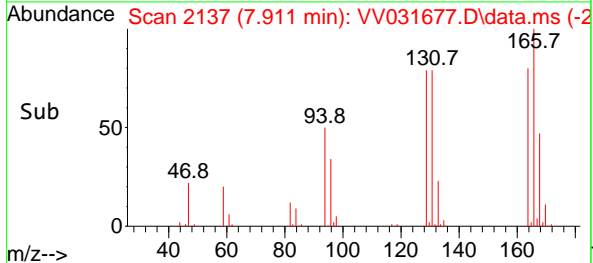
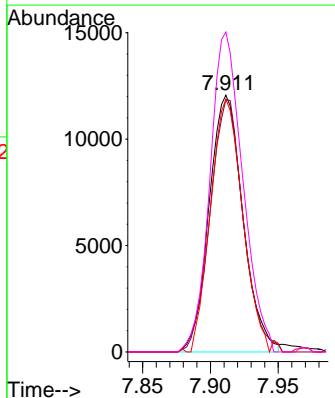
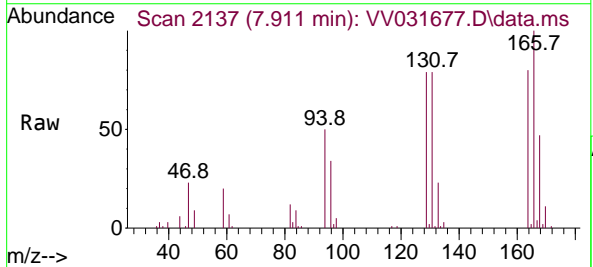
Ion	Ratio	Lower	Upper
97	100		
99	61.8	45.2	84.0
83	87.9	59.5	110.5
85	54.6	38.6	71.8

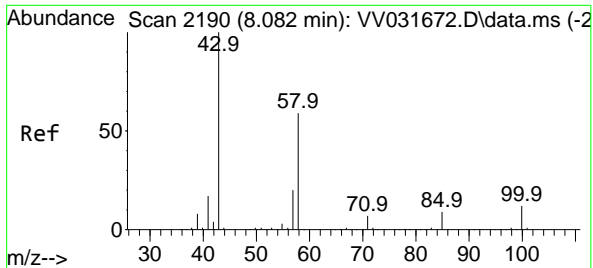


#46  
 Tetrachloroethene  
 Concen: 9.511 ug/L  
 RT: 7.911 min Scan# 2137  
 Delta R.T. 0.000 min  
 Lab File: VV031677.D  
 Acq: 11 Jul 2023 13:30

Tgt Ion: 164 Resp: 20925

Ion	Ratio	Lower	Upper
164	100		
129	101.0	65.2	121.0
131	100.0	67.1	124.7
166	124.6	91.4	169.8

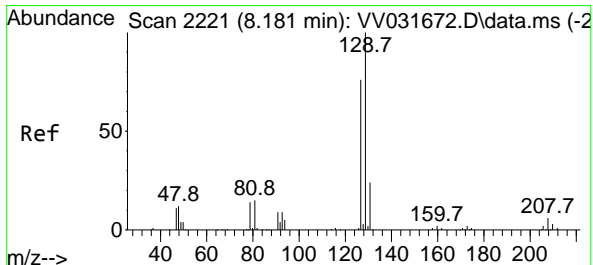
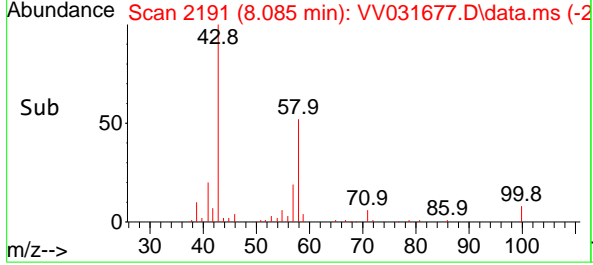
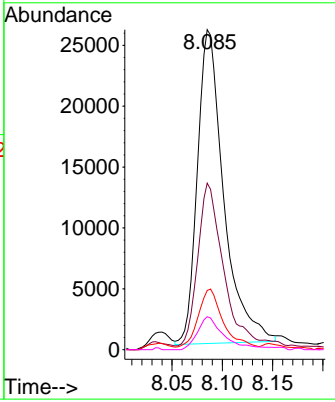
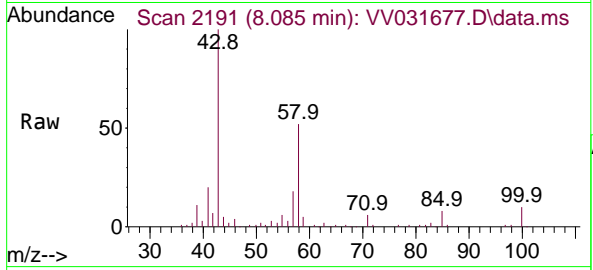




#48  
 2-Hexanone  
 Concen: 16.275 ug/L  
 RT: 8.085 min Scan# 2191  
 Delta R.T. 0.003 min  
 Lab File: VV031677.D  
 Acq: 11 Jul 2023 13:30

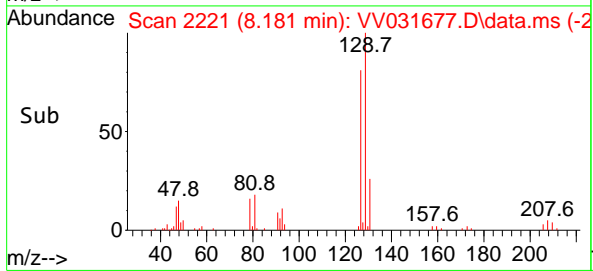
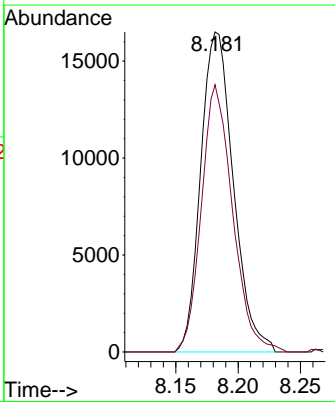
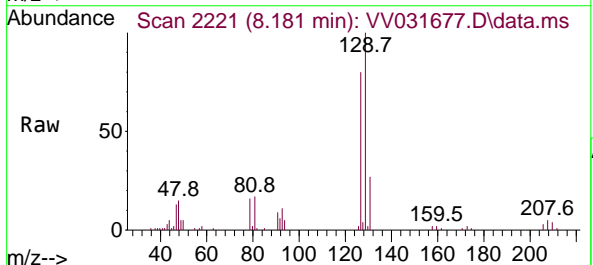
Instrument : MSVOA\_V  
 ClientSampleId : VSTD010245

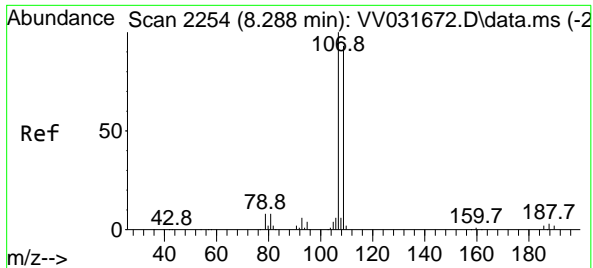
Tgt Ion	Resp	Lower	Upper
43	47054		
43	100		
58	49.9	46.3	69.5
57	18.2	16.8	25.2
100	9.7	9.8	14.8



#49  
 Dibromochloromethane  
 Concen: 9.318 ug/L  
 RT: 8.181 min Scan# 2221  
 Delta R.T. 0.000 min  
 Lab File: VV031677.D  
 Acq: 11 Jul 2023 13:30

Tgt Ion	Resp	Lower	Upper
129	30105		
129	100		
127	82.0	55.2	102.6

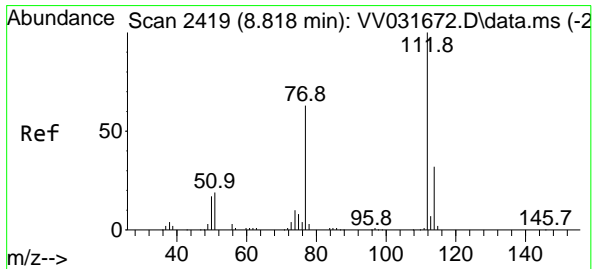
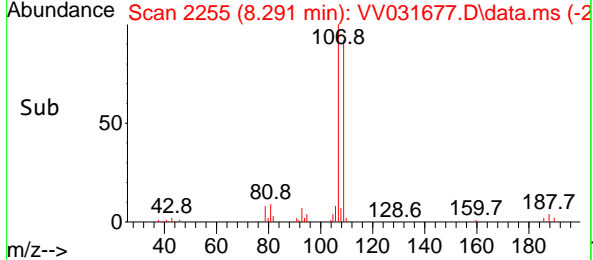
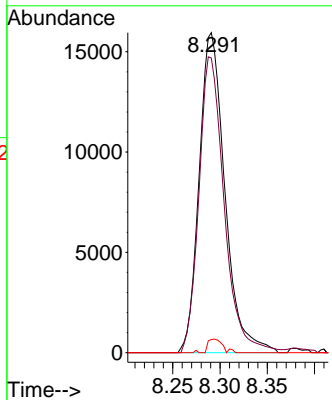
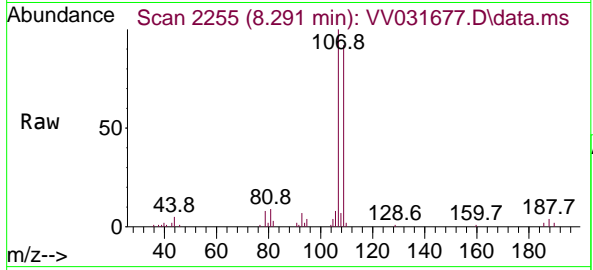




#50  
 1,2-Dibromoethane  
 Concen: 9.759 ug/L  
 RT: 8.291 min Scan# 21  
 Delta R.T. 0.003 min  
 Lab File: VV031677.D  
 Acq: 11 Jul 2023 13:30

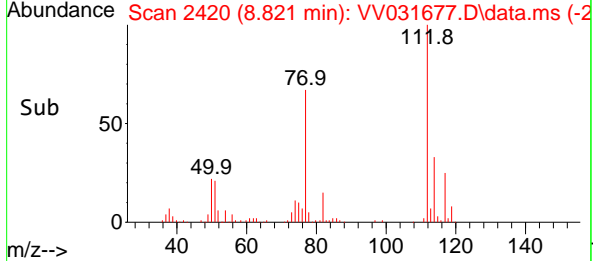
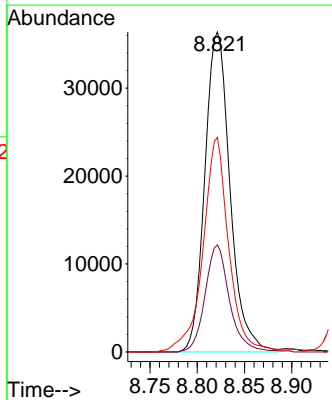
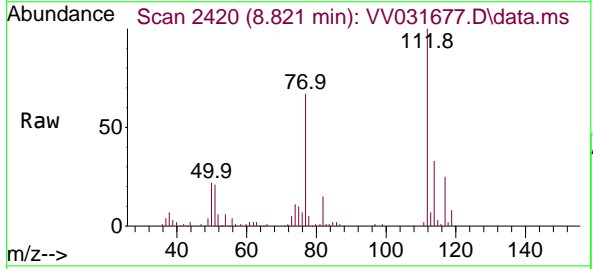
Instrument : MSVOA\_V  
 ClientSampleId : VSTD010245

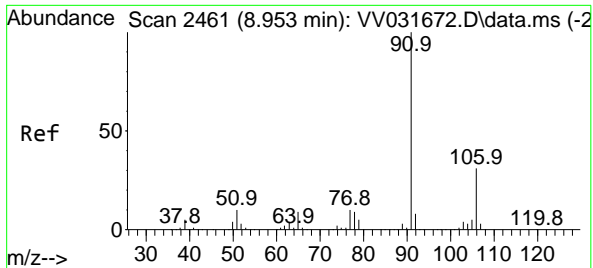
Tgt Ion	Resp	Lower	Upper
107	30228		
107	100		
109	92.1	65.4	121.4
188	4.1	2.8	4.2



#51  
 Chlorobenzene  
 Concen: 9.430 ug/L  
 RT: 8.821 min Scan# 2420  
 Delta R.T. 0.003 min  
 Lab File: VV031677.D  
 Acq: 11 Jul 2023 13:30

Tgt Ion	Resp	Lower	Upper
112	67527		
112	100		
114	33.5	22.2	41.2
77	67.0	50.6	76.0

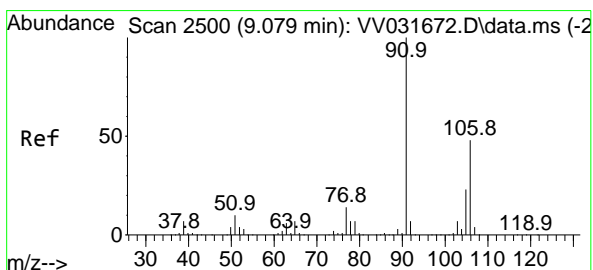
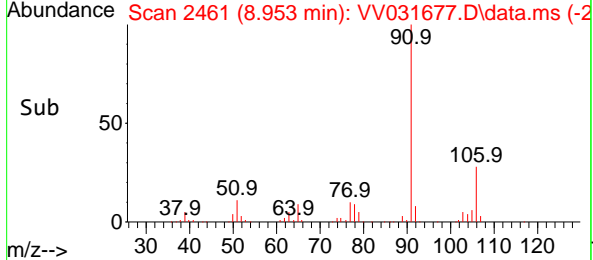
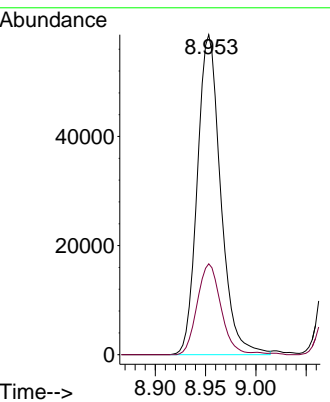
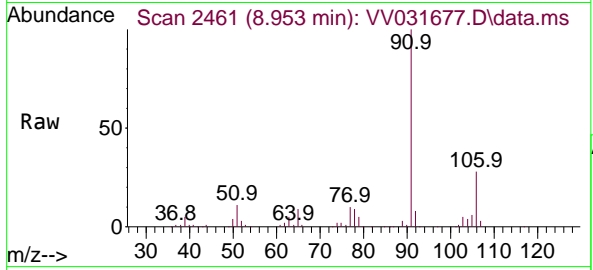




#52  
 Ethylbenzene  
 Concen: 7.922 ug/L  
 RT: 8.953 min Scan# 2461  
 Delta R.T. 0.000 min  
 Lab File: VV031677.D  
 Acq: 11 Jul 2023 13:30

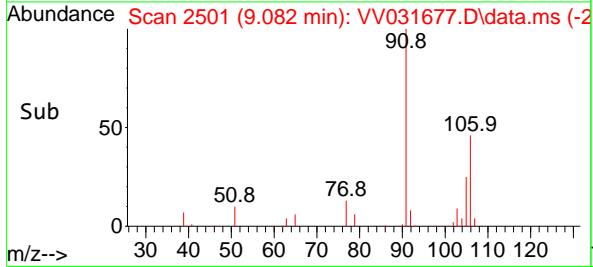
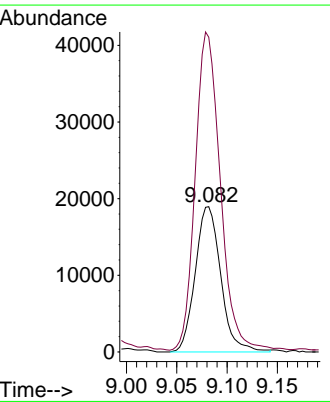
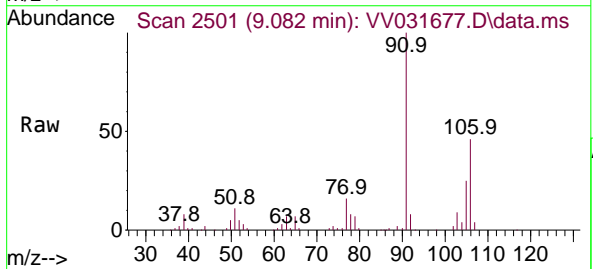
Instrument : MSVOA\_V  
 ClientSampleId : VSTD010245

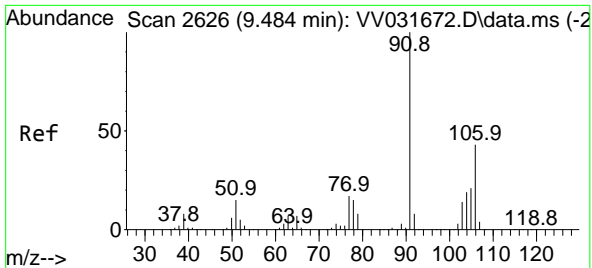
Tgt Ion: 91 Resp: 94884  
 Ion Ratio Lower Upper  
 91 100  
 106 28.4 21.5 39.9



#53  
 m,p-Xylene  
 Concen: 7.571 ug/L  
 RT: 9.082 min Scan# 2501  
 Delta R.T. 0.003 min  
 Lab File: VV031677.D  
 Acq: 11 Jul 2023 13:30

Tgt Ion: 106 Resp: 33503  
 Ion Ratio Lower Upper  
 106 100  
 91 216.6 145.6 270.4

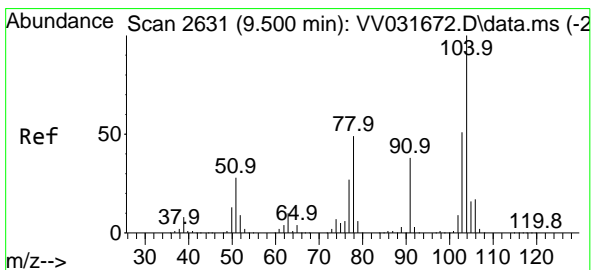
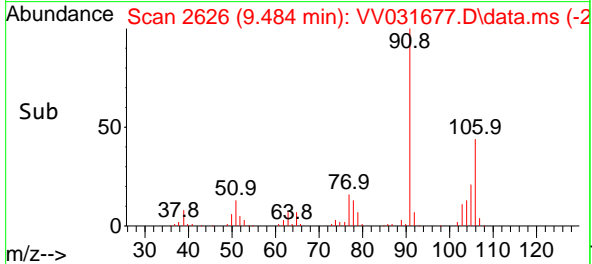
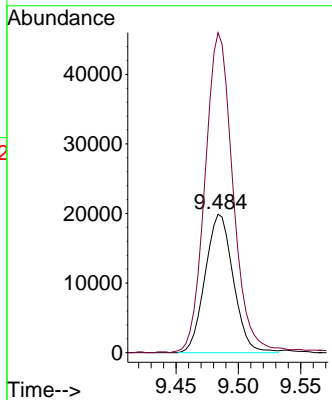
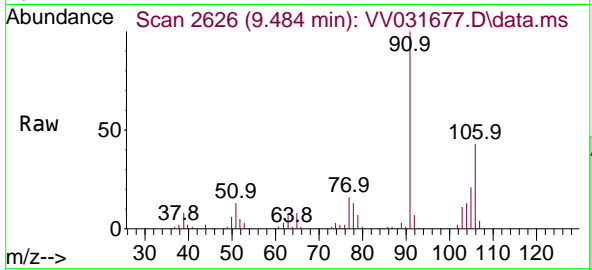




#54  
 o-Xylene  
 Concen: 7.519 ug/L  
 RT: 9.484 min Scan# 20  
 Delta R.T. 0.000 min  
 Lab File: VV031677.D  
 Acq: 11 Jul 2023 13:30

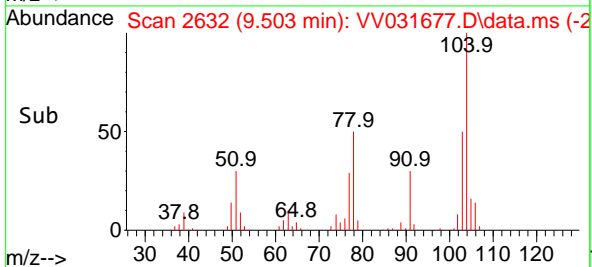
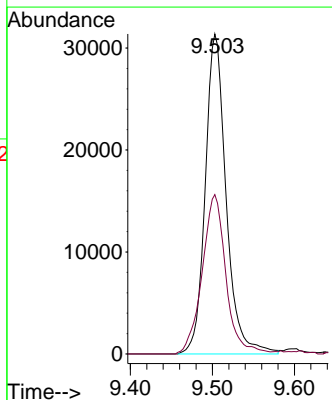
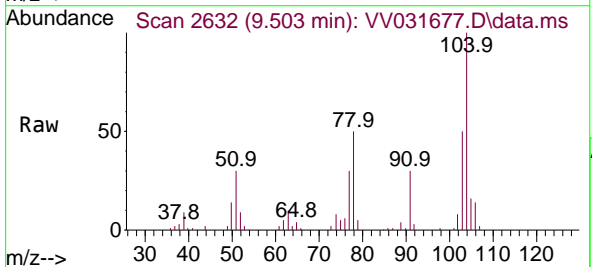
Instrument : MSVOA\_V  
 ClientSampleId : VSTD010245

Tgt Ion:106 Resp: 31302  
 Ion Ratio Lower Upper  
 106 100  
 91 231.2 163.0 302.6

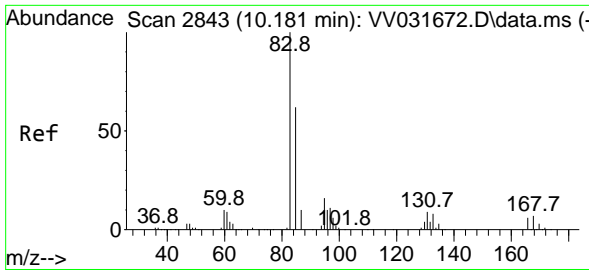


#55  
 Styrene  
 Concen: 7.388 ug/L  
 RT: 9.503 min Scan# 2632  
 Delta R.T. 0.003 min  
 Lab File: VV031677.D  
 Acq: 11 Jul 2023 13:30

Tgt Ion:104 Resp: 55638  
 Ion Ratio Lower Upper  
 104 100  
 78 49.8 34.4 64.0



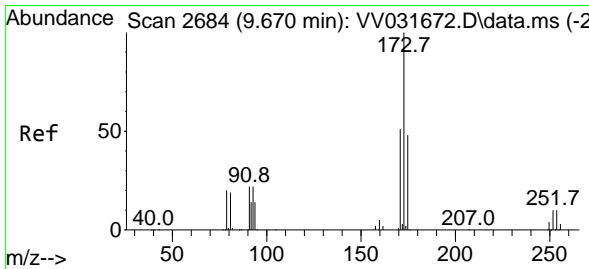
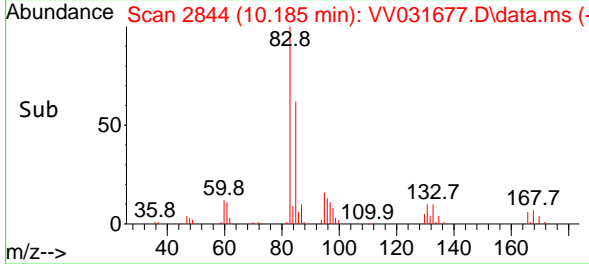
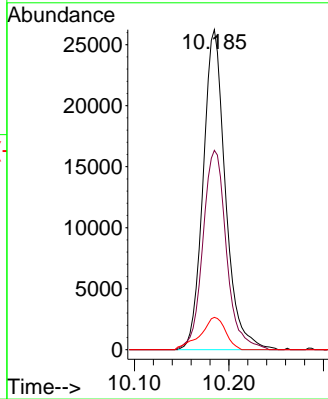
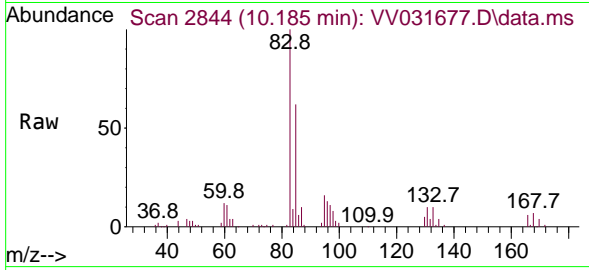




#57  
 1,1,2,2-Tetrachloroethane  
 Concen: 9.187 ug/L  
 RT: 10.185 min Scan# 2843  
 Delta R.T. 0.003 min  
 Lab File: VV031677.D  
 Acq: 11 Jul 2023 13:30

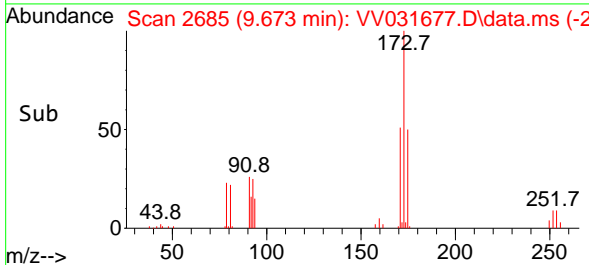
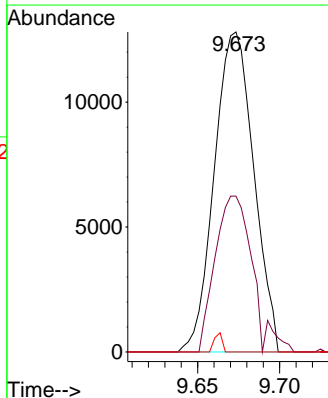
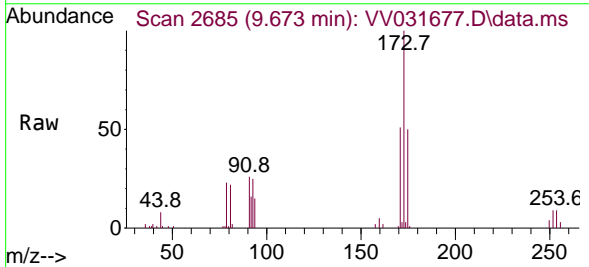
Instrument : MSVOA\_V  
 ClientSampleId : VSTD010245

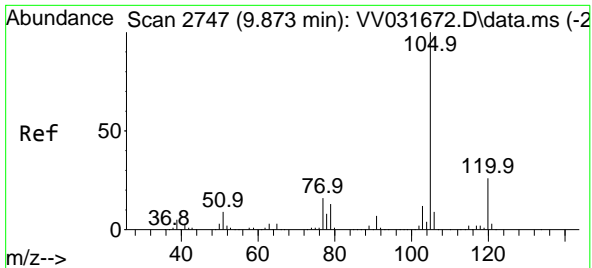
Tgt Ion	Resp	Lower	Upper
83	42914		
83	100		
85	62.3	43.4	80.6
131	14.3	10.9	16.3



#59  
 Bromoform  
 Concen: 10.046 ug/L  
 RT: 9.673 min Scan# 2685  
 Delta R.T. 0.003 min  
 Lab File: VV031677.D  
 Acq: 11 Jul 2023 13:30

Tgt Ion	Resp	Lower	Upper
173	21388		
173	100		
175	43.1	38.6	58.0
254	1.2	6.9	10.3

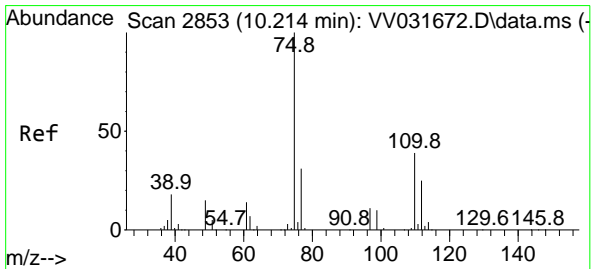
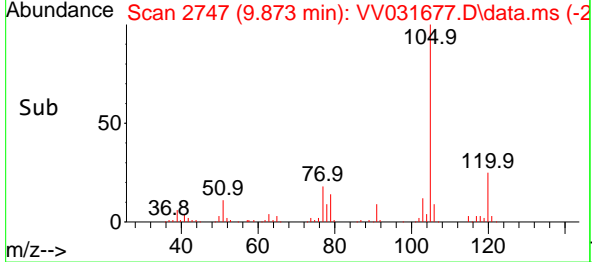
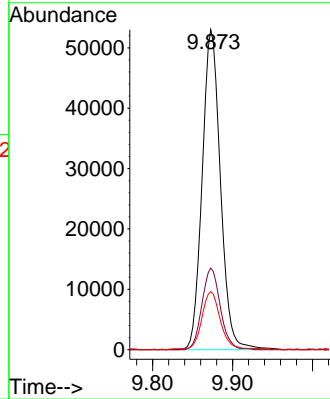
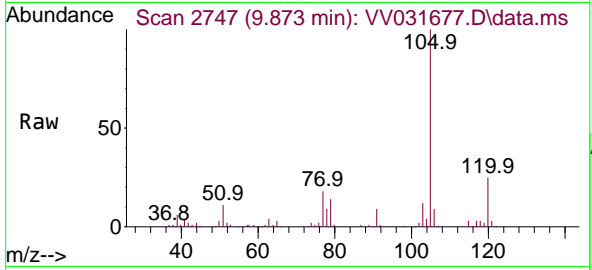




#60  
 Isopropylbenzene  
 Concen: 7.868 ug/L  
 RT: 9.873 min Scan# 21  
 Delta R.T. 0.000 min  
 Lab File: VV031677.D  
 Acq: 11 Jul 2023 13:30

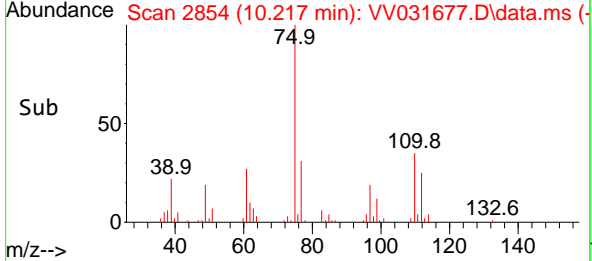
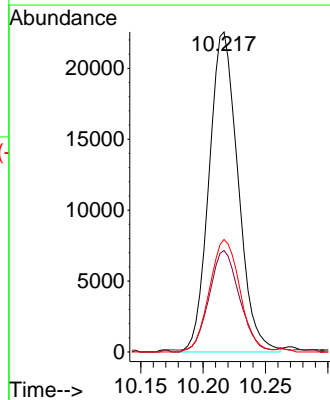
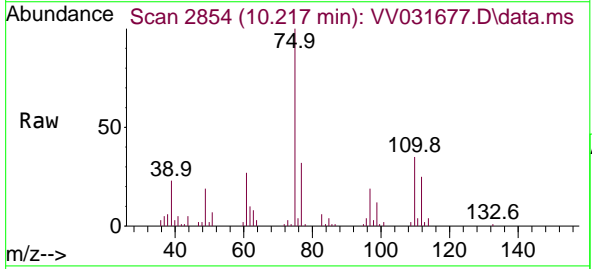
Instrument :  
 MSVOA\_V  
 ClientSampleId :  
 VSTD010245

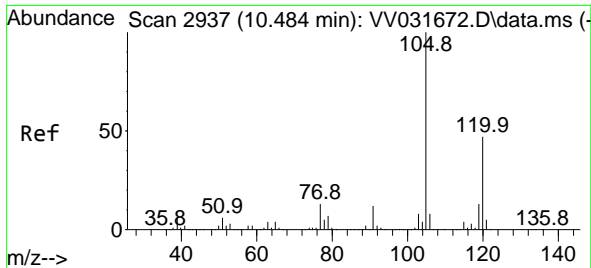
Tgt Ion	Resp	Lower	Upper
105	84355		
105	100		
120	25.4	20.6	30.8
77	18.6	13.2	19.8



#61  
 1,2,3-Trichloropropane  
 Concen: 10.814 ug/L  
 RT: 10.217 min Scan# 2854  
 Delta R.T. 0.003 min  
 Lab File: VV031677.D  
 Acq: 11 Jul 2023 13:30

Tgt Ion	Resp	Lower	Upper
75	36517		
75	100		
77	33.5	25.1	37.7
110	36.9	31.4	47.0

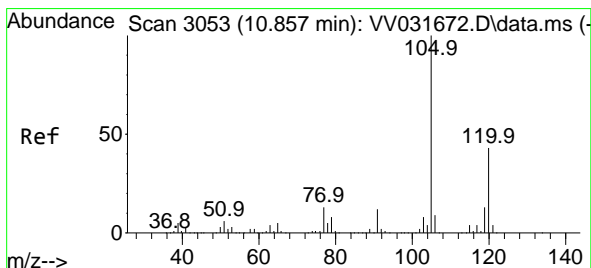
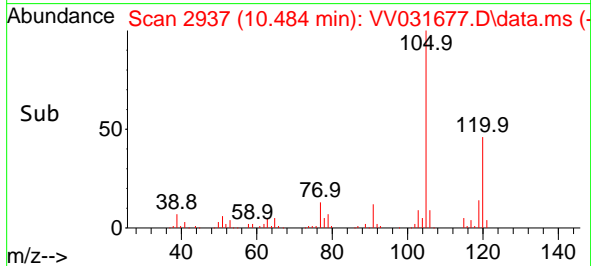
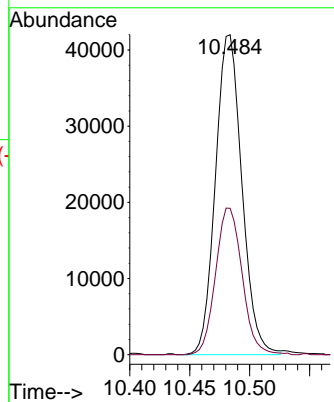
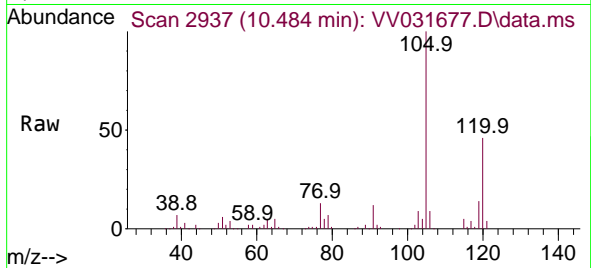




#62  
 1,3,5-Trimethylbenzene  
 Concen: 7.297 ug/L  
 RT: 10.484 min Scan# 2937  
 Delta R.T. 0.000 min  
 Lab File: VV031677.D  
 Acq: 11 Jul 2023 13:30

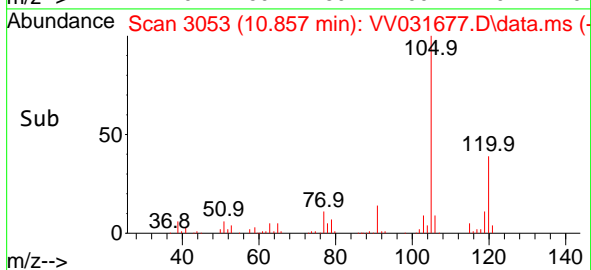
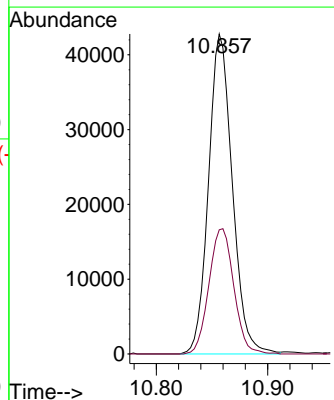
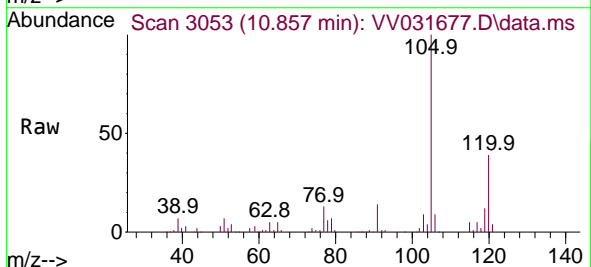
Instrument : MSVOA\_V  
 ClientSampleId : VSTD010245

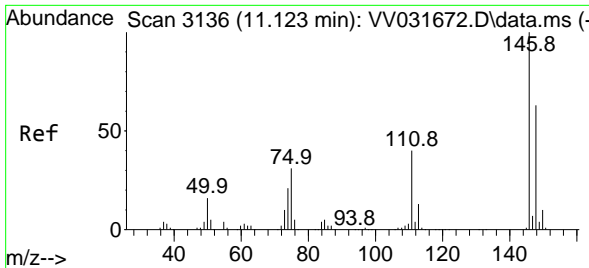
Tgt Ion:105 Resp: 64378  
 Ion Ratio Lower Upper  
 105 100  
 120 46.0 37.4 56.0



#63  
 1,2,4-Trimethylbenzene  
 Concen: 7.607 ug/L  
 RT: 10.857 min Scan# 3053  
 Delta R.T. 0.000 min  
 Lab File: VV031677.D  
 Acq: 11 Jul 2023 13:30

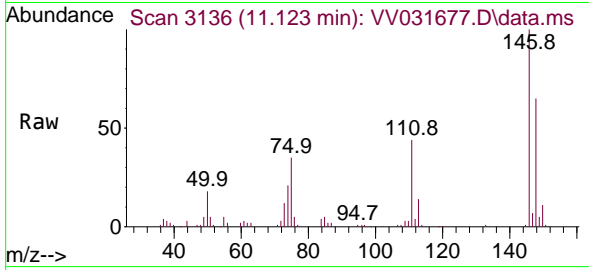
Tgt Ion:105 Resp: 63629  
 Ion Ratio Lower Upper  
 105 100  
 120 40.8 34.7 52.1



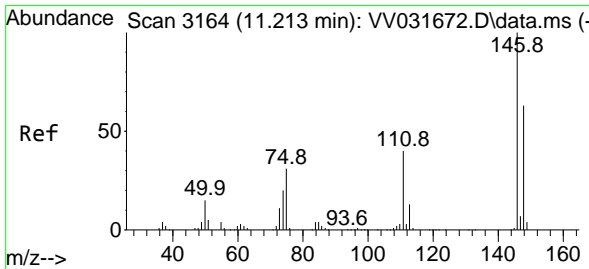
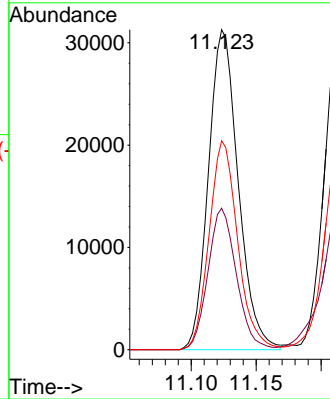
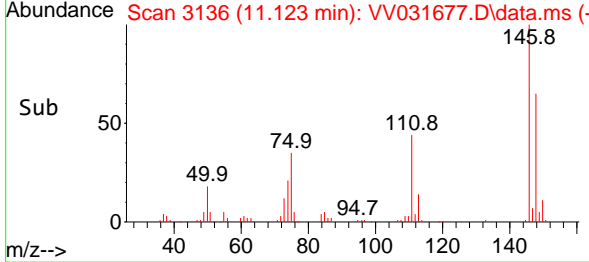


#64  
 1,3-Dichlorobenzene  
 Concen: 9.159 ug/L  
 RT: 11.123 min Scan# 3136  
 Delta R.T. 0.000 min  
 Lab File: VV031677.D  
 Acq: 11 Jul 2023 13:30

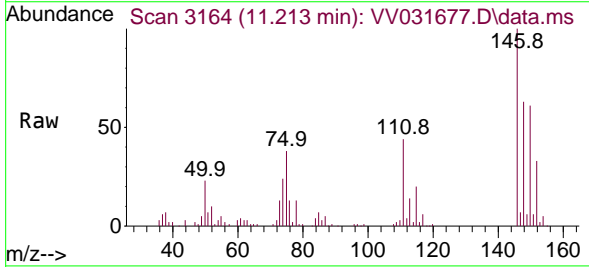
Instrument : MSVOA\_V  
 ClientSampleId : VSTD010245



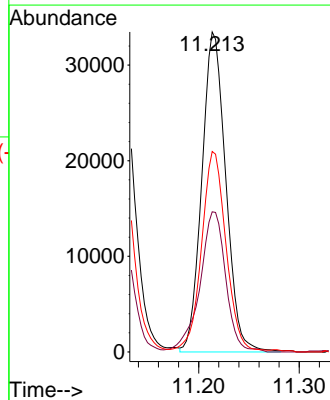
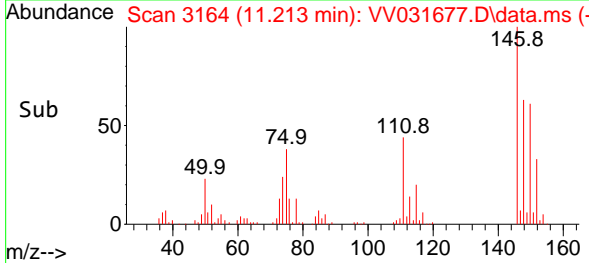
Tgt Ion:146 Resp: 49821  
 Ion Ratio Lower Upper  
 146 100  
 111 44.2 28.3 52.5  
 148 65.3 44.2 82.2

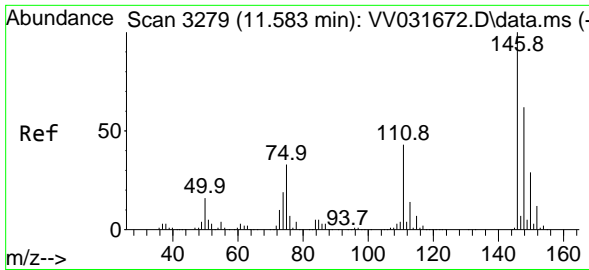


#65  
 1,4-Dichlorobenzene  
 Concen: 9.532 ug/L  
 RT: 11.213 min Scan# 3164  
 Delta R.T. 0.000 min  
 Lab File: VV031677.D  
 Acq: 11 Jul 2023 13:30



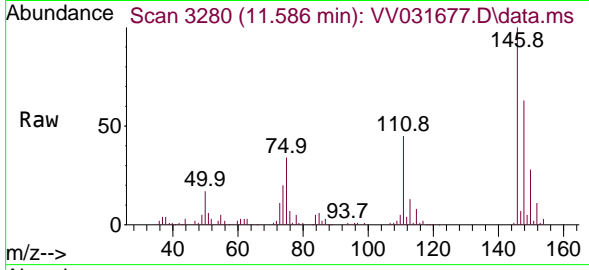
Tgt Ion:146 Resp: 55390  
 Ion Ratio Lower Upper  
 146 100  
 111 43.8 28.3 52.7  
 148 62.7 44.1 81.9



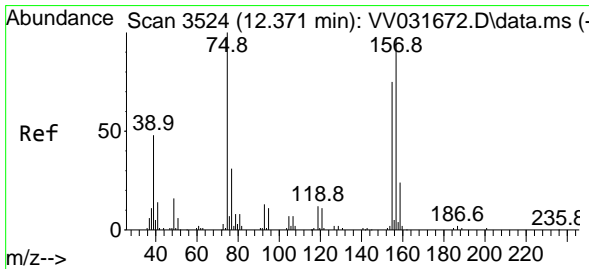
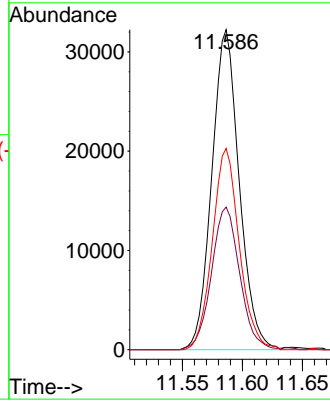
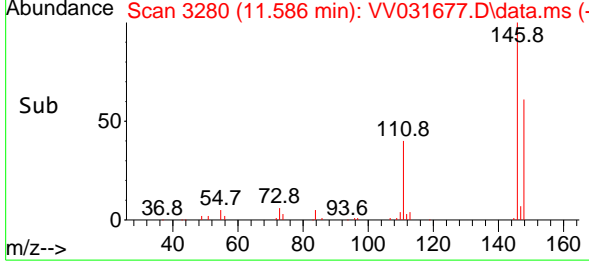


#67  
 1,2-Dichlorobenzene  
 Concen: 9.301 ug/L  
 RT: 11.586 min Scan# 311  
 Delta R.T. 0.003 min  
 Lab File: VV031677.D  
 Acq: 11 Jul 2023 13:30

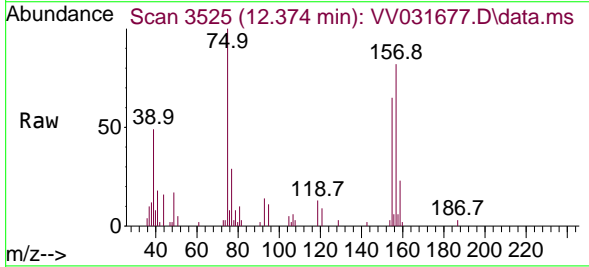
Instrument :  
 MSVOA\_V  
 ClientSampleId :  
 VSTD010245



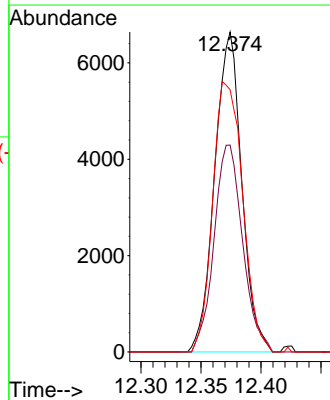
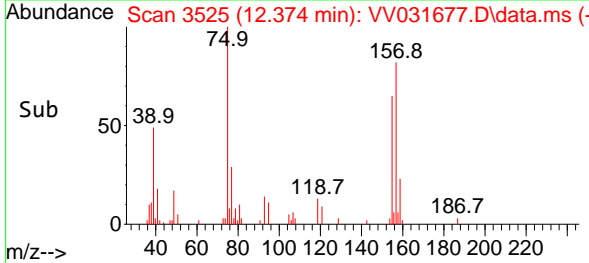
Tgt Ion:146 Resp: 51203  
 Ion Ratio Lower Upper  
 146 100  
 111 44.6 34.8 52.2  
 148 62.9 49.8 74.6

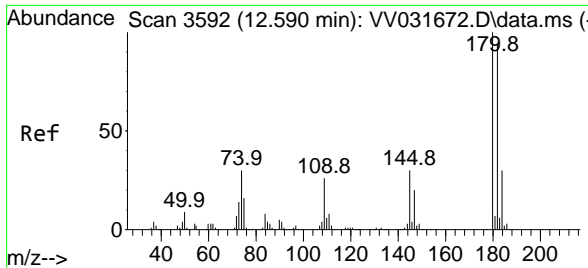


#68  
 1,2-Dibromo-3-chloropropane  
 Concen: 10.275 ug/L  
 RT: 12.374 min Scan# 3525  
 Delta R.T. 0.003 min  
 Lab File: VV031677.D  
 Acq: 11 Jul 2023 13:30



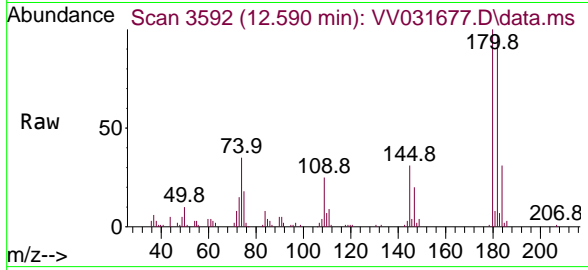
Tgt Ion: 75 Resp: 10402  
 Ion Ratio Lower Upper  
 75 100  
 155 70.3 59.9 89.9  
 157 87.9 77.6 116.4





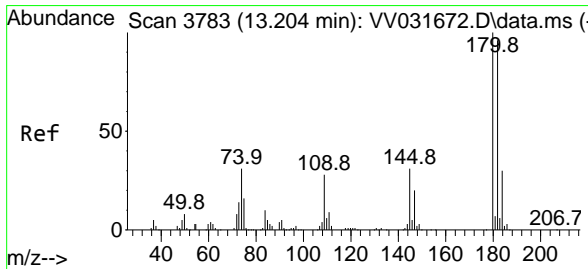
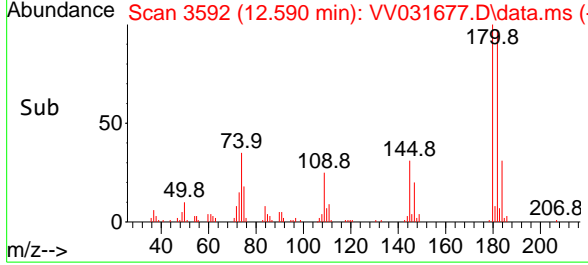
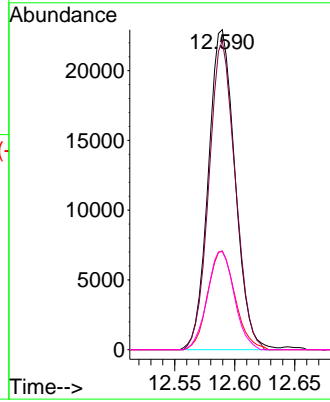
#69  
 1,3,5-Trichlorobenzene  
 Concen: 8.585 ug/L  
 RT: 12.590 min Scan# 31  
 Delta R.T. 0.000 min  
 Lab File: VV031677.D  
 Acq: 11 Jul 2023 13:30

Instrument :  
 MSVOA\_V  
 ClientSampleId :  
 VSTD010245



Tgt Ion:180 Resp: 35566

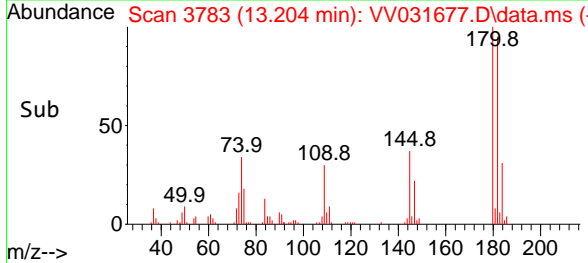
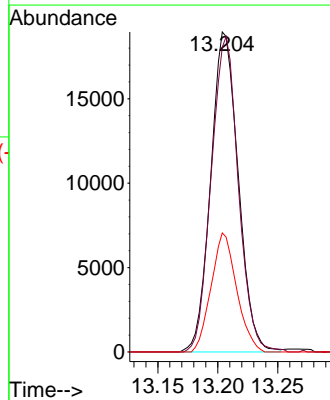
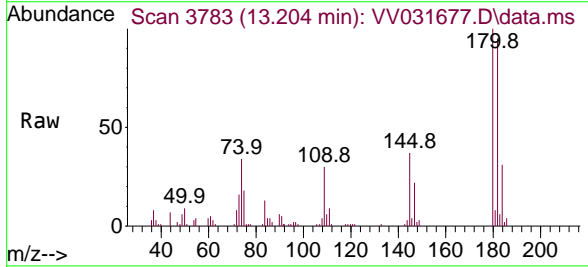
Ion	Ratio	Lower	Upper
180	100		
182	94.7	75.5	113.3
184	31.6	23.7	35.5
145	30.8	24.8	37.2

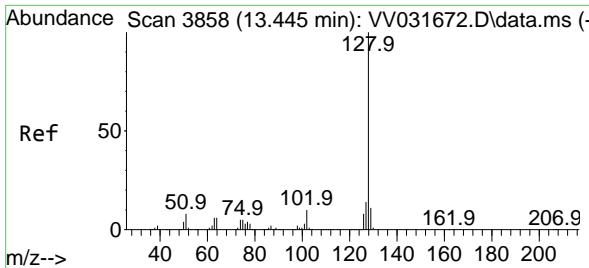


#70  
 1,2,4-trichlorobenzene  
 Concen: 8.370 ug/L  
 RT: 13.204 min Scan# 3783  
 Delta R.T. 0.000 min  
 Lab File: VV031677.D  
 Acq: 11 Jul 2023 13:30

Tgt Ion:180 Resp: 30269

Ion	Ratio	Lower	Upper
180	100		
182	96.7	76.6	114.8
145	34.4	25.4	38.2

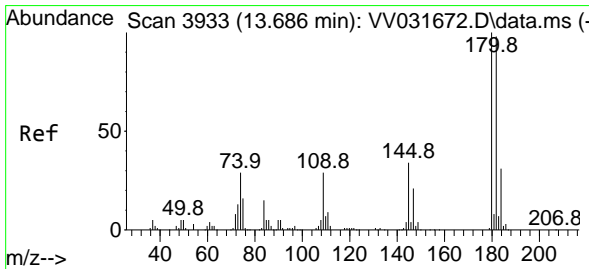
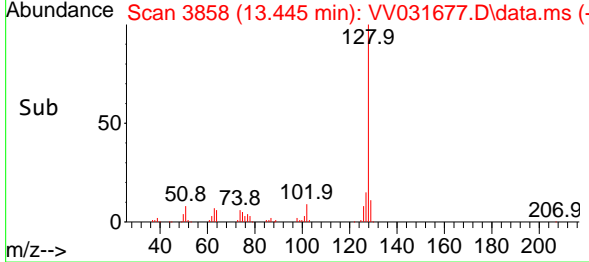
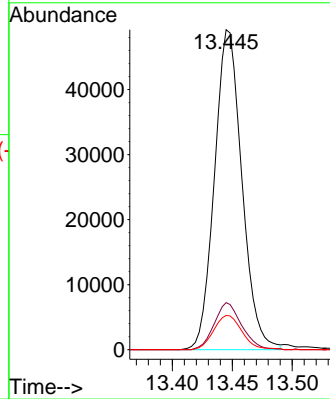
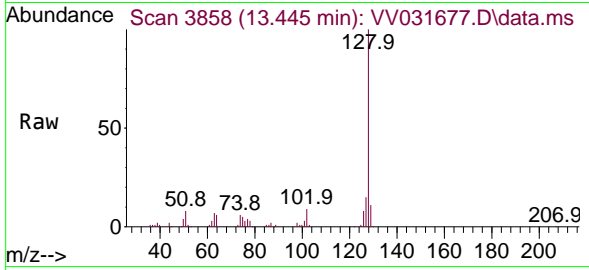




#71  
 Naphthalene  
 Concen: 8.402 ug/L  
 RT: 13.445 min Scan# 3858  
 Delta R.T. 0.000 min  
 Lab File: VV031677.D  
 Acq: 11 Jul 2023 13:30

Instrument : MSVOA\_V  
 ClientSampleId : VSTD010245

Tgt Ion	Resp	Lower	Upper
128	78136		
127	14.7	11.0	16.4
129	11.1	8.6	13.0



#72  
 1,2,3-Trichlorobenzene  
 Concen: 8.292 ug/L  
 RT: 13.686 min Scan# 3933  
 Delta R.T. 0.000 min  
 Lab File: VV031677.D  
 Acq: 11 Jul 2023 13:30

Tgt Ion	Resp	Lower	Upper
180	31146		
182	95.0	76.7	115.1
145	34.7	27.7	41.5

