

Quantitation Report (QT Reviewed)

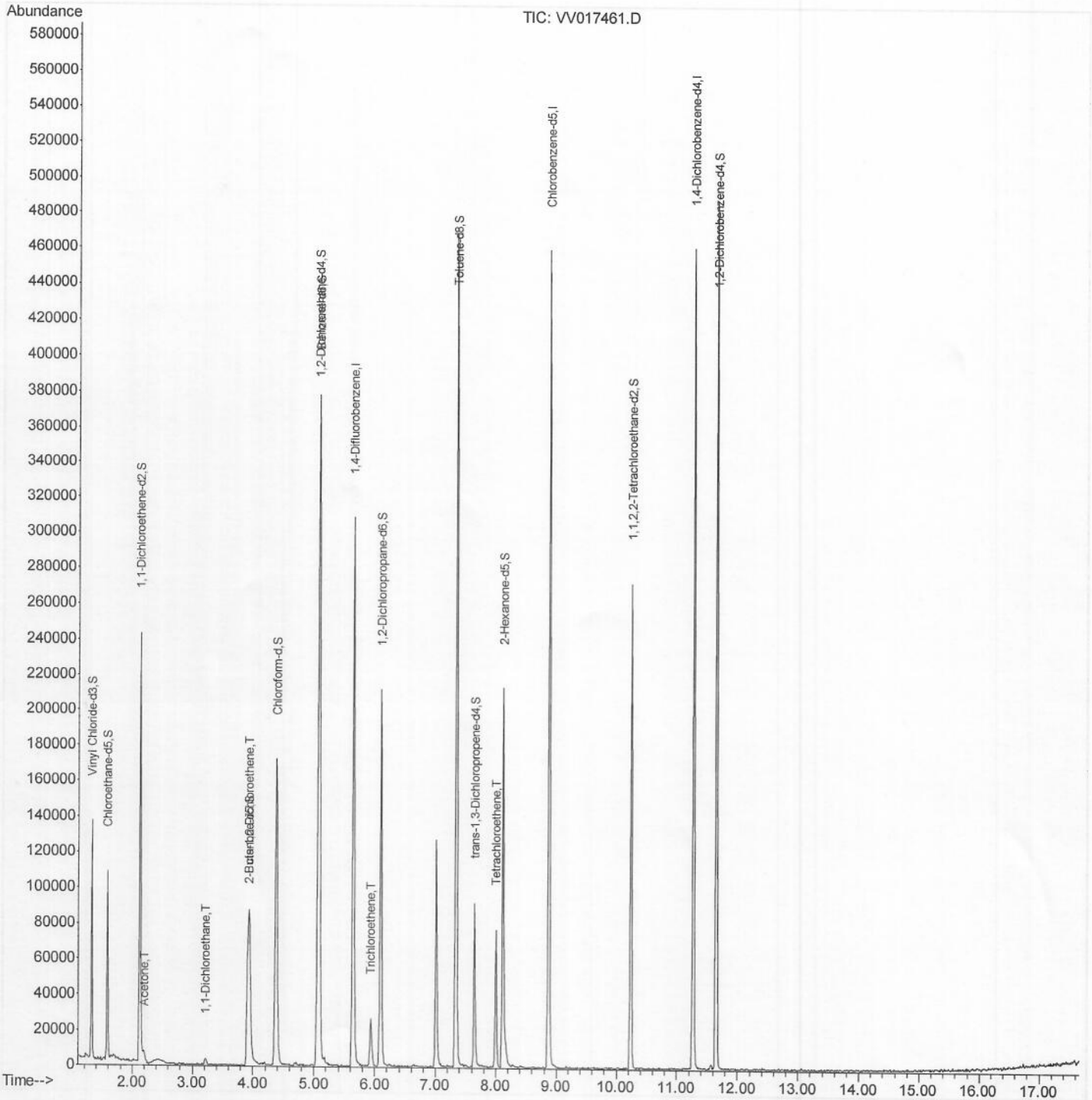
Data Path : Z:\VOASRV\HPCHEM1\MSVOA V\DATA\VV071320\
 Data File : VV017461.D
 Acq On : 13 Jul 2020 11:44
 Operator : SY/MD
 Sample : L3270-15
 Misc : 5.0mL/MSVOA V/WATER
 ALS Vial : 7 Sample Multiplier: 1

Instrument :
 MSVOA_V
 Client Sampled :
 F4A25

Manual Integrations
 APPROVED

MMDadoda
 7/14/2020 12:19:25 PM

Quant Time: Jul 14 05:44:56 2020
 Quant Method : Z:\VOASRV\HPCHEM1\MSVOA_V\METHOD\SOMVLM070820WMA.M
 Quant Title : VOC Analysis
 QLast Update : Tue Jul 14 05:08:48 2020
 Response via : Initial Calibration



Quantitation Report (Qedit)

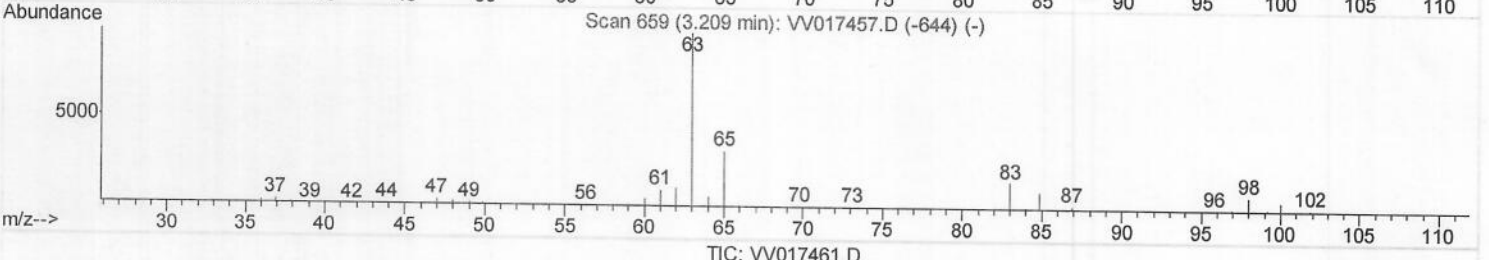
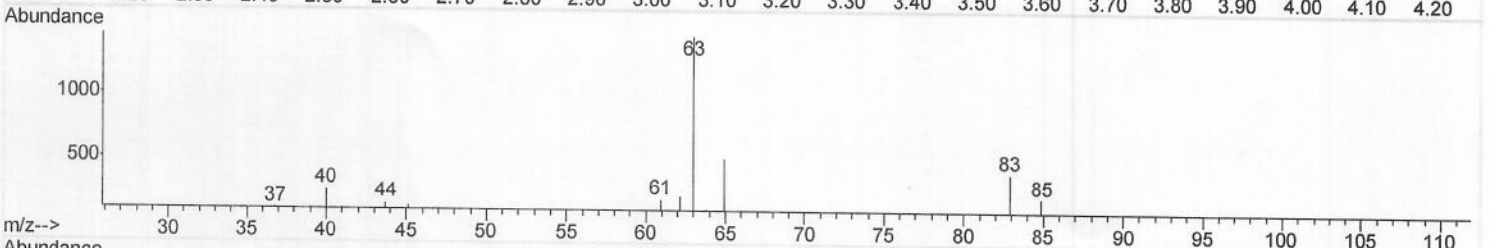
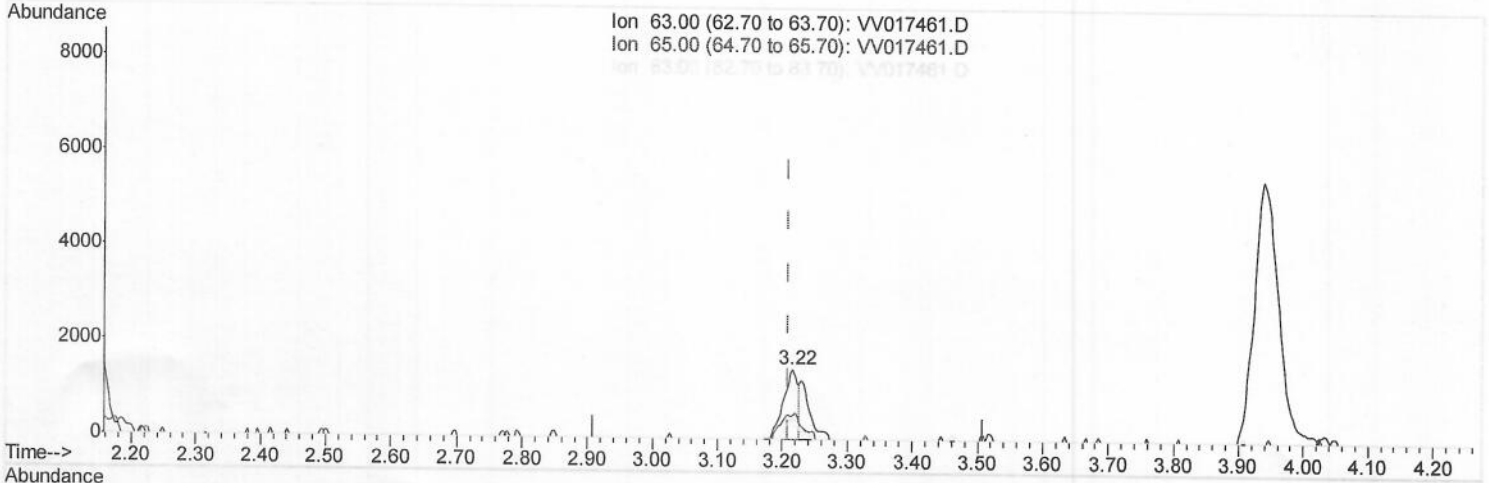
Data Path : Z:\VOASRV\HPCHEM1\MSVOA V\DATA\VV071320\
 Data File : VV017461.D
 Acq On : 13 Jul 2020 11:44
 Operator : SY/MD
 Sample : L3270-15
 Misc : 5.0mL/MSVOA V/WATER
 ALS Vial : 7 Sample Multiplier: 1

Instrument :
 MSVOA_V
 ClientSampled :
 F4A25

Manual Integrations
 APPROVED

MMDadoda
 7/14/2020 12:19:25 PM

Quant Time: Jul 14 05:16:12 2020
 Quant Method : Z:\VOASRV\HPCHEM1\MSVOA_V\METHOD\SOMVLM070820WMA.M
 Quant Title : VOC Analysis
 QLast Update : Tue Jul 14 05:08:48 2020
 Response via : Initial Calibration



TIC: VV017461.D

(19) 1,1-Dichloroethane (T)

3.216min (+0.006) 0.74ug/L

response 2275

Ion	Exp%	Act%
63.00	100	100
65.00	31.60	35.08
83.00	14.50	27.84#
0.00	0.00	0.00

Quantitation Report (Qedit)

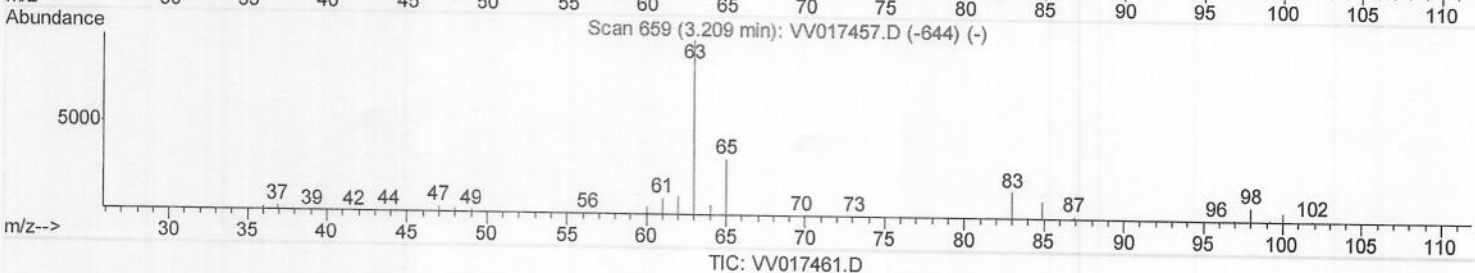
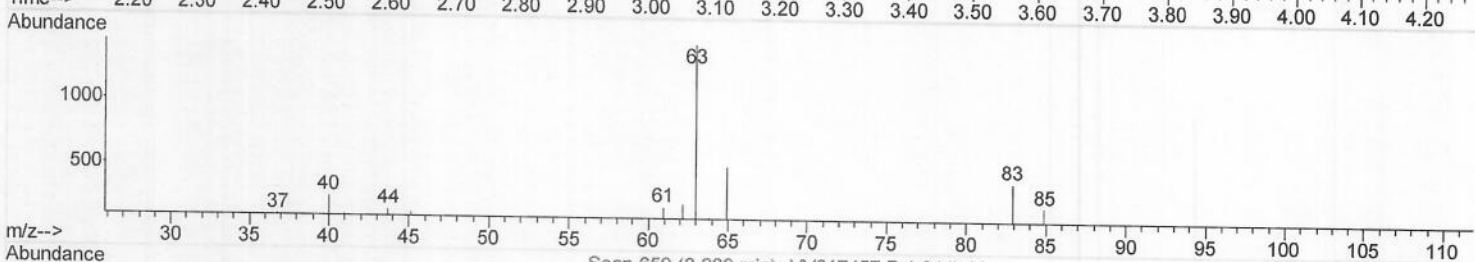
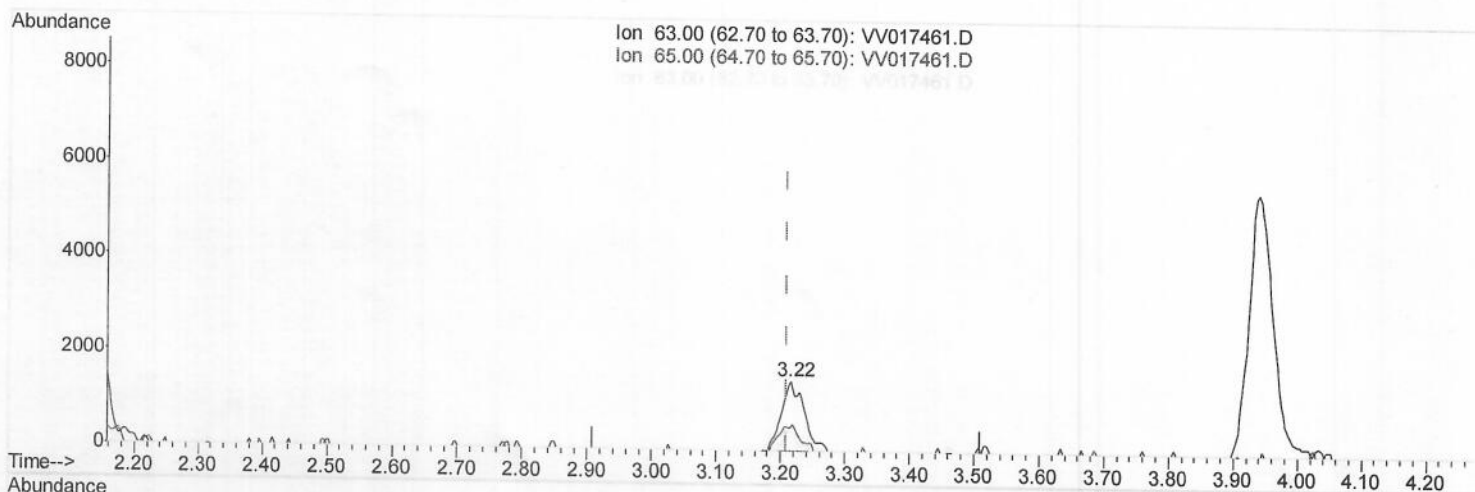
Data Path : Z:\VOASRV\HPCHEM1\MSVOA V\DATA\VV071320\
 Data File : VV017461.D
 Acq On : 13 Jul 2020 11:44
 Operator : SY/MD
 Sample : L3270-15
 Misc : 5.0mL/MSVOA V/WATER
 ALS Vial : 7 Sample Multiplier: 1

Instrument :
 MSVOA_V
 Client Sampled :
 F4A25

Manual Integrations
 APPROVED

MMDadoda
 7/14/2020 12:19:25 PM

Quant Time: Jul 14 05:16:12 2020
 Quant Method : Z:\VOASRV\HPCHEM1\MSVOA_V\METHOD\SOMVLM070820WMA.M
 Quant Title : VOC Analysis
 QLast Update : Tue Jul 14 05:08:48 2020
 Response via : Initial Calibration



(19) 1,1-Dichloroethane (T)

3.216min (+0.006) 1.15ug/L m

response 3554

M.D
07/23/20

Ion	Exp%	Act%
63.00	100	100
65.00	31.60	35.08
83.00	14.50	27.84#
0.00	0.00	0.00

Quantitation Report (QT Reviewed)

Data Path : Z:\VOASRV\HPCHEM1\MSVOA V\DATA\VV071320\
 Data File : VV017461.D
 Acq On : 13 Jul 2020 11:44
 Operator : SY/MD
 Sample : L3270-15
 Misc : 5.0mL/MSVOA V/WATER
 ALS Vial : 7 Sample Multiplier: 1

Instrument :
 MSVOA_V
 Client Sampled :
 F4A25

Manual Integrations
 APPROVED

MMDadoda
 7/14/2020 12:19:25 PM

Quant Time: Jul 14 05:44:56 2020
 Quant Method : Z:\VOASRV\HPCHEM1\MSVOA_V\METHOD\SOMVLM070820WMA.M
 Quant Title : VOC Analysis
 QLast Update : Tue Jul 14 05:08:48 2020
 Response via : Initial Calibration

Internal Standards	R.T.	QIon	Response	Conc	Units	Dev (Min)
1) 1,4-Difluorobenzene	5.64	114	256389	50.00	ug/L	0.00
28) Chlorobenzene-d5	8.87	117	242604	50.00	ug/L	0.00
60) 1,4-Dichlorobenzene-d4	11.27	152	117043	50.00	ug/L	0.00

System Monitoring Compounds

4) Vinyl Chloride-d3	1.32	65	80248	60.12	ug/L	0.00
Spiked Amount	50.000	Range 60 - 135	Recovery =	120.24%		
7) Chloroethane-d5	1.58	69	60429	64.45	ug/L	0.00
Spiked Amount	50.000	Range 70 - 130	Recovery =	128.90%		
11) 1,1-Dichloroethene-d2	2.12	63	131178	43.41	ug/L	0.00
Spiked Amount	50.000	Range 60 - 125	Recovery =	86.82%		
21) 2-Butanone-d5	3.91	46	102834	112.80	ug/L	0.00
Spiked Amount	100.000	Range 40 - 130	Recovery =	112.80%		
24) Chloroform-d	4.38	84	169891	55.03	ug/L	0.00
Spiked Amount	50.000	Range 70 - 125	Recovery =	110.06%		
26) 1,2-Dichloroethane-d4	5.06	65	125183	59.07	ug/L	0.00
Spiked Amount	50.000	Range 70 - 125	Recovery =	118.14%		
32) Benzene-d6	5.08	84	306986	58.58	ug/L	0.00
Spiked Amount	50.000	Range 70 - 125	Recovery =	117.16%		
36) 1,2-Dichloropropane-d6	6.09	67	87599	58.05	ug/L	0.00
Spiked Amount	50.000	Range 70 - 120	Recovery =	116.10%		
41) Toluene-d8	7.34	98	291356	57.83	ug/L	0.00
Spiked Amount	50.000	Range 80 - 120	Recovery =	115.66%		
43) trans-1,3-Dichloropropene-	7.64	79	49400	56.24	ug/L	0.00
Spiked Amount	50.000	Range 60 - 125	Recovery =	112.48%		
47) 2-Hexanone-d5	8.11	63	66183	106.86	ug/L	0.00
Spiked Amount	100.000	Range 45 - 130	Recovery =	106.86%		
57) 1,1,2,2-Tetrachloroethane-	10.24	84	108619	51.26	ug/L	0.00
Spiked Amount	50.000	Range 65 - 120	Recovery =	102.52%		
64) 1,2-Dichlorobenzene-d4	11.65	152	119593	61.11	ug/L	0.00
Spiked Amount	50.000	Range 80 - 120	Recovery =	122.22%#		

Target Compounds

Target Compounds	R.T.	QIon	Response	Conc	Units	Ovalue
13) Acetone	2.19	43	8508	6.856	ug/L	99
19) 1,1-Dichloroethane	3.22	63	3554m	1.154	ug/L	92
20) cis-1,2-Dichloroethene	3.94	96	32812	18.287	ug/L	83
34) Trichloroethene	5.94	95	4692	2.464	ug/L	95
46) Tetrachloroethene	8.00	164	17557	10.982	ug/L	95

M.D
 07/23/20

(#) = qualifier out of range (m) = manual integration (+) = signals summed