

Data Path : Z:\VOASRV\HPCHEM1\MSVOA V\DATA\VV071320\  
 Data File : VV017464.D  
 Acq On : 13 Jul 2020 12:53  
 Operator : SY/MD  
 Sample : L3270-18  
 Misc : 5.0mL/MSVOA V/WATER  
 ALS Vial : 10 Sample Multiplier: 1

Instrument :  
 MSVOA\_V  
 ClientSampleId :  
 F4A34

Integration Parameters: LSCINT.P

Integrator: RTE  
 Smoothing : OFF Filtering: 5  
 Sampling : 1 Min Area: 0 % of largest Peak  
 Start Thrs: 0.2 Max Peaks: 100  
 Stop Thrs : 0 Peak Location: TOP

If leading or trailing edge < 100 prefer < Baseline drop else tangent >  
 Peak separation: 5

Method : Z:\VOASRV\HPCHEM1\MSVOA\_V\METHOD\SOMVLM070820WMA.M  
 Title : VOC Analysis

Signal : TIC

peak #	R.T. min	first scan	max scan	last scan	PK TY	peak height	corr. area	corr. % max.	% of total
1	1.315	64	70	85	rVB	128306	134979	14.69%	1.798%
2	1.579	145	152	164	rBV	95977	111267	12.11%	1.482%
3	2.122	311	321	337	rBV	227672	342934	37.31%	4.567%
4	2.708	500	503	505	rVB3	855	415	0.05%	0.006%
5	2.756	515	518	520	rVB2	994	473	0.05%	0.006%
6	2.788	525	528	533	rVB4	1290	958	0.10%	0.013%
7	3.180	648	650	655	rVB4	929	618	0.07%	0.008%
8	3.248	669	671	674	rBV2	735	465	0.05%	0.006%
9	3.286	681	683	688	rVB3	1069	722	0.08%	0.010%
10	3.511	750	753	756	rVB2	503	364	0.04%	0.005%
11	3.544	760	763	765	rVB2	748	468	0.05%	0.006%
12	3.563	765	769	770	rBV2	594	375	0.04%	0.005%
13	3.640	790	793	795	rBV3	711	432	0.05%	0.006%
14	3.701	809	812	813	rBV	739	379	0.04%	0.005%
15	3.733	819	822	824	rBV2	645	340	0.04%	0.005%
16	3.807	843	845	849	rVB3	741	432	0.05%	0.006%
17	3.868	861	864	867	rBV2	676	510	0.06%	0.007%
18	3.913	867	878	910	rBV	55456	187182	20.36%	2.493%
19	4.216	970	972	976	rBV5	860	616	0.07%	0.008%
20	4.373	1009	1021	1048	rVB2	155138	384479	41.83%	5.120%
21	4.772	1142	1145	1148	rBV4	692	460	0.05%	0.006%
22	4.913	1185	1189	1195	rVB6	795	849	0.09%	0.011%
23	5.074	1220	1239	1261	rBV2	355478	919152	100.00%	12.240%
24	5.370	1329	1331	1334	rBV4	1190	787	0.09%	0.010%
25	5.418	1342	1346	1347	rBV	729	551	0.06%	0.007%
26	5.534	1376	1382	1387	rBV8	994	1242	0.14%	0.017%
27	5.643	1403	1416	1436	rBV	342790	679850	73.96%	9.054%
28	5.807	1464	1467	1469	rBV2	933	760	0.08%	0.010%
29	5.936	1495	1507	1525	rBV9	19704	46168	5.02%	0.615%
30	6.023	1531	1534	1537	rBV3	1050	612	0.07%	0.008%
31	6.097	1542	1557	1578	rBV	200051	409983	44.60%	5.460%
32	6.354	1633	1637	1640	rBV4	934	784	0.09%	0.010%
33	6.412	1652	1655	1658	rBV3	1055	526	0.06%	0.007%
34	6.460	1666	1670	1673	rBV3	394	335	0.04%	0.004%

Data Path : Z:\VOASRV\HPCHEM1\MSVOA V\DATA\VV071320\  
 Data File : VV017464.D  
 Acq On : 13 Jul 2020 12:53  
 Operator : SY/MD  
 Sample : L3270-18  
 Misc : 5.0mL/MSVOA V/WATER  
 ALS Vial : 10 Sample Multiplier: 1

Instrument :  
 MSVOA\_V  
 ClientSampleId :  
 F4A34

## Integration Parameters: LSCINT.P

Integrator: RTE  
 Smoothing : OFF  
 Sampling : 1  
 Start Thrs: 0.2  
 Stop Thrs : 0

Filtering: 5  
 Min Area: 0 % of largest Peak  
 Max Peaks: 100  
 Peak Location: TOP

If leading or trailing edge < 100 prefer < Baseline drop else tangent >  
 Peak separation: 5

Method : Z:\VOASRV\HPCHEM1\MSVOA\_V\METHOD\SOMVLM070820WMA.M  
 Title : VOC Analysis

35	6.537	1692	1694	1696	rBV	1025	597	0.06%	0.008%
36	6.556	1696	1700	1705	rVB4	1276	1071	0.12%	0.014%
37	6.653	1724	1730	1731	rBV5	1083	1062	0.12%	0.014%
38	6.717	1748	1750	1752	rBV3	684	336	0.04%	0.004%
39	6.762	1762	1764	1766	rBV2	648	346	0.04%	0.005%
40	6.794	1771	1774	1777	rBV3	740	514	0.06%	0.007%
41	6.884	1798	1802	1803	rBV2	479	369	0.04%	0.005%
42	7.010	1830	1841	1863	rBV	119529	215526	23.45%	2.870%
43	7.164	1886	1889	1891	rBV2	961	603	0.07%	0.008%
44	7.338	1928	1943	1967	rBV	431264	749433	81.54%	9.980%
45	7.595	2021	2023	2027	rBV	598	446	0.05%	0.006%
46	7.643	2027	2038	2057	rBV	87584	153562	16.71%	2.045%
47	7.807	2085	2089	2091	rBV2	821	637	0.07%	0.008%
48	8.000	2141	2149	2161	rVV3	19894	33497	3.64%	0.446%
49	8.045	2161	2163	2165	rVB3	897	374	0.04%	0.005%
50	8.109	2173	2183	2211	rBV	186953	372935	40.57%	4.966%
51	8.322	2246	2249	2251	rBV4	948	430	0.05%	0.006%
52	8.650	2349	2351	2354	rVB2	952	530	0.06%	0.007%
53	8.749	2378	2382	2386	rBV3	700	658	0.07%	0.009%
54	8.875	2409	2421	2441	rBV	503576	822587	89.49%	10.955%
55	9.077	2481	2484	2488	rVB2	795	538	0.06%	0.007%
56	9.161	2506	2510	2511	rBV2	534	339	0.04%	0.005%
57	9.222	2523	2529	2530	rBV3	845	797	0.09%	0.011%
58	9.322	2557	2560	2564	rVB2	777	474	0.05%	0.006%
59	9.357	2568	2571	2574	rBV3	828	548	0.06%	0.007%
60	9.556	2630	2633	2634	rBV2	642	359	0.04%	0.005%
61	9.756	2693	2695	2699	rVV3	804	461	0.05%	0.006%
62	9.846	2721	2723	2726	rVB3	681	389	0.04%	0.005%
63	9.868	2727	2730	2732	rBV3	758	424	0.05%	0.006%
64	9.923	2746	2747	2752	rVB2	971	453	0.05%	0.006%
65	9.948	2752	2755	2761	rBV6	797	889	0.10%	0.012%
66	10.064	2788	2791	2793	rVB3	804	511	0.06%	0.007%
67	10.096	2798	2801	2803	rBV3	623	384	0.04%	0.005%
68	10.238	2833	2845	2862	rVV	244277	386221	42.02%	5.143%
69	10.360	2881	2883	2886	rVB2	954	406	0.04%	0.005%
70	10.476	2917	2919	2923	rVB2	790	363	0.04%	0.005%
71	10.559	2941	2945	2947	rBV2	1165	679	0.07%	0.009%

Data Path : Z:\VOASRV\HPCHEM1\MSVOA V\DATA\VV071320\  
 Data File : VV017464.D  
 Acq On : 13 Jul 2020 12:53  
 Operator : SY/MD  
 Sample : L3270-18  
 Misc : 5.0mL/MSVOA V/WATER  
 ALS Vial : 10 Sample Multiplier: 1

Instrument :  
 MSVOA\_V  
 ClientSampleId :  
 F4A34

## Integration Parameters: LSCINT.P

Integrator: RTE  
 Smoothing : OFF Filtering: 5  
 Sampling : 1 Min Area: 0 % of largest Peak  
 Start Thrs: 0.2 Max Peaks: 100  
 Stop Thrs : 0 Peak Location: TOP

If leading or trailing edge < 100 prefer < Baseline drop else tangent >  
 Peak separation: 5

Method : Z:\VOASRV\HPCHEM1\MSVOA\_V\METHOD\SOMVLM070820WMA.M  
 Title : VOC Analysis

72	10.752	3000	3005	3008	rVB5	885	682	0.07%	0.009%
73	10.768	3008	3010	3016	rBV5	847	556	0.06%	0.007%
74	10.833	3026	3030	3032	rBV3	628	420	0.05%	0.006%
75	10.929	3057	3060	3063	rBV	856	521	0.06%	0.007%
76	10.945	3063	3065	3069	rBV2	726	560	0.06%	0.007%
77	11.087	3104	3109	3111	rBV3	733	691	0.08%	0.009%
78	11.270	3155	3166	3185	rBV	503490	773893	84.20%	10.306%
79	11.424	3211	3214	3216	rBV4	824	487	0.05%	0.006%
80	11.453	3220	3223	3225	rBV3	971	564	0.06%	0.008%
81	11.556	3245	3255	3270	rBV4	13271	27472	2.99%	0.366%
82	11.646	3272	3283	3299	rVB	463465	713006	77.57%	9.495%
83	11.807	3331	3333	3338	rBV2	929	670	0.07%	0.009%
84	11.990	3388	3390	3393	rBV2	492	370	0.04%	0.005%
85	12.132	3431	3434	3437	rBV3	864	695	0.08%	0.009%
86	12.190	3449	3452	3458	rVB4	1189	830	0.09%	0.011%
87	12.267	3474	3476	3480	rBV2	858	505	0.05%	0.007%
88	12.485	3540	3544	3548	rBV5	652	721	0.08%	0.010%
89	12.546	3561	3563	3567	rBV3	531	437	0.05%	0.006%
90	12.717	3613	3616	3621	rVB5	996	650	0.07%	0.009%
91	12.868	3660	3663	3664	rBV	559	340	0.04%	0.005%
92	13.164	3749	3755	3757	rBV5	956	938	0.10%	0.012%
93	13.521	3864	3866	3868	rBV2	793	459	0.05%	0.006%
94	13.681	3914	3916	3918	rVB	959	452	0.05%	0.006%
95	13.968	4000	4005	4006	rBV2	664	572	0.06%	0.008%
96	14.180	4067	4071	4073	rVB3	715	440	0.05%	0.006%
97	14.350	4122	4124	4125	rBV2	996	374	0.04%	0.005%
98	15.080	4349	4351	4354	rBV3	696	391	0.04%	0.005%
99	15.241	4398	4401	4404	rBV3	750	563	0.06%	0.007%
100	15.627	4519	4521	4523	rBV2	1137	637	0.07%	0.008%

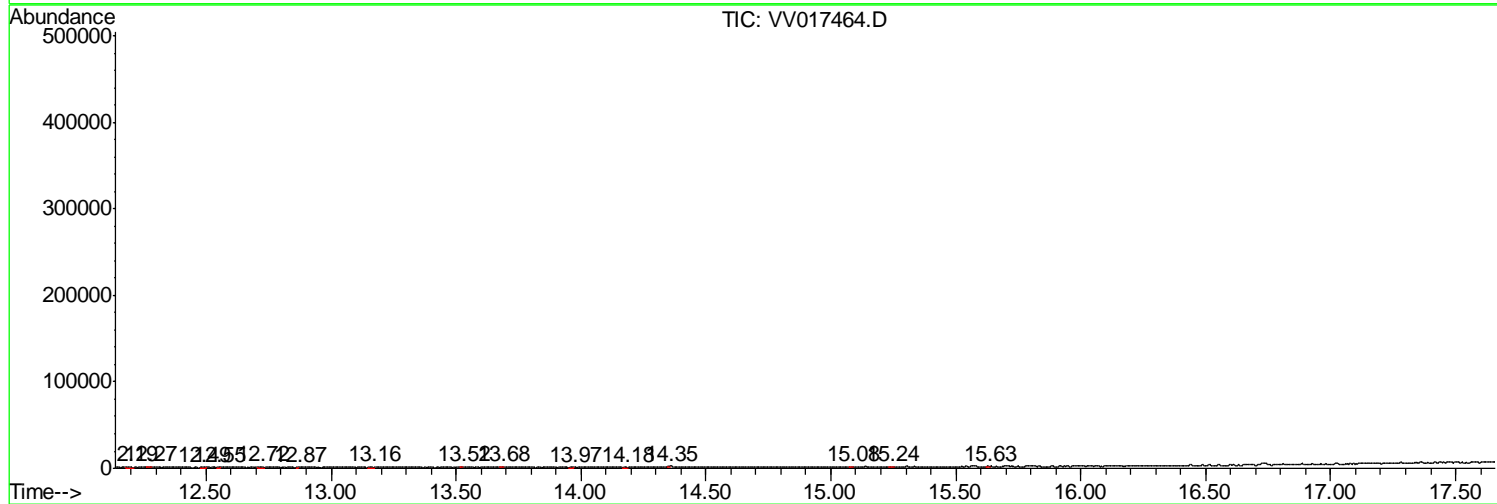
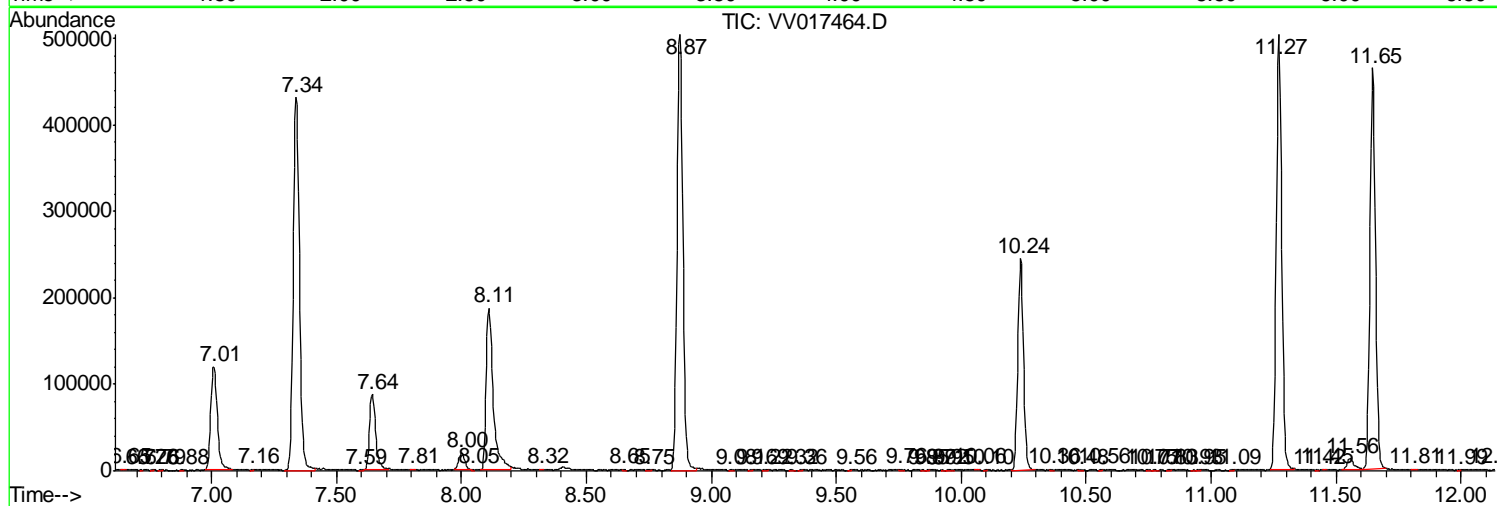
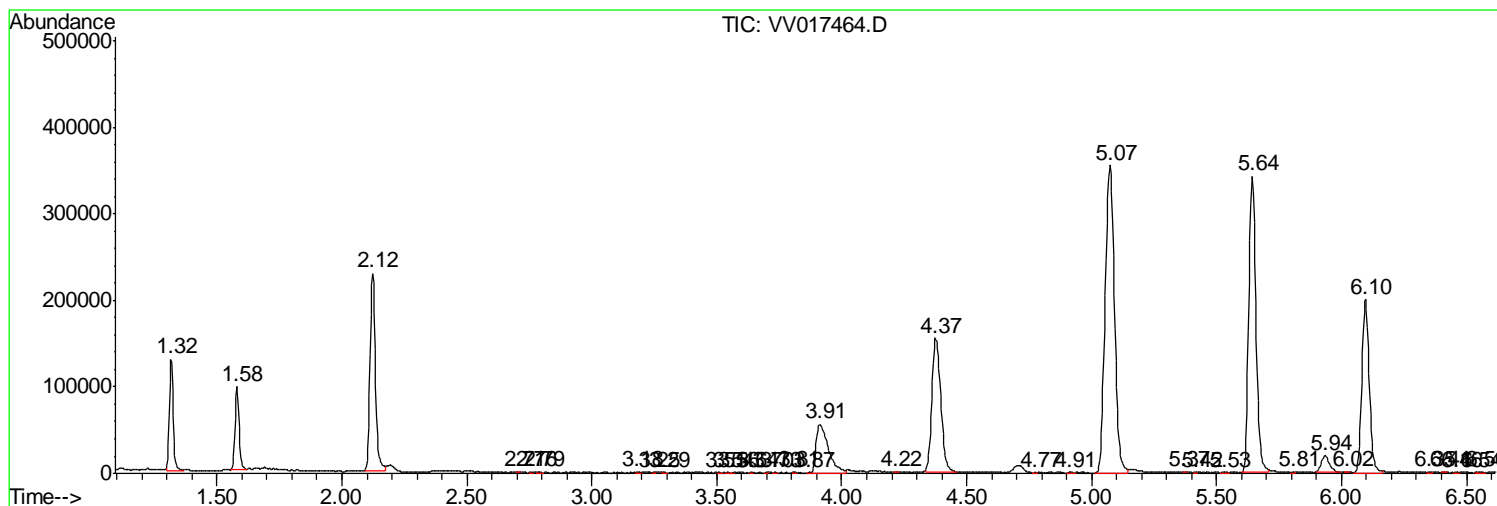
Sum of corrected areas: 7509111

Data Path : Z:\VOASRV\HPCHEM1\MSVOA V\DATA\VV071320\  
 Data File : VV017464.D  
 Acq On : 13 Jul 2020 12:53  
 Operator : SY/MD  
 Sample : L3270-18  
 Misc : 5.0mL/MSVOA V/WATER  
 ALS Vial : 10 Sample Multiplier: 1

Instrument :  
 MSVOA\_V  
 Client Sampled :  
 F4A34

Quant Method : Z:\VOASRV\HPCHEM1\MSVOA\_V\METHOD\SOMVLM070820WMA.M  
 Quant Title : VOC Analysis

TIC Library : C:\DATABASE\NIST11.L  
 TIC Integration Parameters: LSCINT.P



Data Path : Z:\VOASRV\HPCHEM1\MSVOA\_V\DATA\VV071320\  
Data File : VV017464.D  
Acq On : 13 Jul 2020 12:53  
Operator : SY/MD  
Sample : L3270-18  
Misc : 5.0mL/MSVOA\_V/WATER  
ALS Vial : 10 Sample Multiplier: 1

Instrument :  
MSVOA\_V  
ClientSampleId :  
F4A34

Quant Method : Z:\VOASRV\HPCHEM1\MSVOA\_V\METHOD\SOMVLM070820WMA.M  
Quant Title : VOC Analysis

TIC Library : C:\DATABASE\NIST11.L  
TIC Integration Parameters: LSCINT.P

No Library Search Compounds Detected

\*\*\*\*\*

Data Path : Z:\VOASRV\HPCHEM1\MSVOA\_V\DATA\VV071320\  
Data File : VV017464.D  
Acq On : 13 Jul 2020 12:53  
Operator : SY/MD  
Sample : L3270-18  
Misc : 5.0mL/MSVOA\_V/WATER  
ALS Vial : 10 Sample Multiplier: 1

Instrument :  
MSVOA\_V  
ClientSampleId :  
F4A34

Quant Method : Z:\VOASRV\HPCHEM1\MSVOA\_V\METHOD\SOMVLM070820WMA.M  
Quant Title : VOC Analysis

TIC Library : C:\DATABASE\NIST11.L  
TIC Integration Parameters: LSCINT.P

TIC Top Hit name	RT	EstConc	Units	Response	--Internal Standard--			
					#	RT	Resp	Conc

---