

Data Path : Z:\VOASRV\HPCHEM1\MSVOA V\DATA\VV071320\  
 Data File : VV017468.D  
 Acq On : 13 Jul 2020 14:26  
 Operator : SY/MD  
 Sample : L3270-17  
 Misc : 5.0mL/MSVOA V/WATER  
 ALS Vial : 14 Sample Multiplier: 1

Instrument :  
 MSVOA\_V  
 ClientSampled :  
 F4A32

Integration Parameters: LSCINT.P

Integrator: RTE  
 Smoothing : OFF  
 Sampling : 1  
 Start Thrs: 0.2  
 Stop Thrs : 0

Filtering: 5  
 Min Area: 0 % of largest Peak  
 Max Peaks: 100  
 Peak Location: TOP

If leading or trailing edge < 100 prefer < Baseline drop else tangent >  
 Peak separation: 5

Method : Z:\VOASRV\HPCHEM1\MSVOA\_V\METHOD\SOMVLM070820WMA.M  
 Title : VOC Analysis

Signal : TIC

peak #	R.T. min	first scan	max scan	last scan	PK TY	peak height	corr. area	corr. % max.	% of total
1	1.315	64	70	85	rVB	125785	131234	12.91%	1.530%
2	1.579	145	152	163	rBV	103505	115175	11.33%	1.343%
3	2.123	311	321	338	rBV	227505	347011	34.13%	4.046%
4	2.772	520	523	525	rBV	1268	818	0.08%	0.010%
5	2.923	567	570	574	rBV4	762	547	0.05%	0.006%
6	3.084	615	620	621	rBV4	957	517	0.05%	0.006%
7	3.171	645	647	649	rBV	979	510	0.05%	0.006%
8	3.216	651	661	674	rVV3	11931	25801	2.54%	0.301%
9	3.348	698	702	706	rBV4	654	567	0.06%	0.007%
10	3.399	716	718	721	rVB2	583	356	0.04%	0.004%
11	3.422	721	725	727	rBV2	819	490	0.05%	0.006%
12	3.441	727	731	733	rBV3	726	520	0.05%	0.006%
13	3.550	756	765	769	rBV7	846	1202	0.12%	0.014%
14	3.576	769	773	775	rBV3	530	360	0.04%	0.004%
15	3.714	814	816	819	rVB3	993	565	0.06%	0.007%
16	3.737	819	823	826	rBV2	1192	796	0.08%	0.009%
17	3.775	833	835	837	rBV3	576	409	0.04%	0.005%
18	3.843	852	856	859	rBV5	742	546	0.05%	0.006%
19	3.939	867	886	917	rBV2	374657	1016879	100.00%	11.857%
20	4.376	1006	1022	1045	rBV	161533	407956	40.12%	4.757%
21	4.753	1137	1139	1141	rBV	704	342	0.03%	0.004%
22	4.891	1177	1182	1186	rBV4	377	369	0.04%	0.004%
23	4.913	1186	1189	1193	rBV2	672	562	0.06%	0.007%
24	4.981	1208	1210	1213	rBV2	777	460	0.05%	0.005%
25	5.074	1221	1239	1264	rBV3	361900	941386	92.58%	10.977%
26	5.290	1303	1306	1308	rVB3	1275	538	0.05%	0.006%
27	5.499	1369	1371	1376	rBV2	640	521	0.05%	0.006%
28	5.553	1386	1388	1390	rVB3	934	417	0.04%	0.005%
29	5.643	1403	1416	1436	rBV	348928	695519	68.40%	8.110%
30	5.936	1495	1507	1522	rBV6	23319	55758	5.48%	0.650%
31	6.093	1541	1556	1580	rBV	203695	416862	40.99%	4.861%
32	6.360	1635	1639	1641	rBV3	1015	609	0.06%	0.007%
33	6.534	1689	1693	1695	rBV3	1076	646	0.06%	0.008%
34	6.592	1709	1711	1714	rBV4	914	489	0.05%	0.006%

Data Path : Z:\VOASRV\HPCHEM1\MSVOA V\DATA\VV071320\  
 Data File : VV017468.D  
 Acq On : 13 Jul 2020 14:26  
 Operator : SY/MD  
 Sample : L3270-17  
 Misc : 5.0mL/MSVOA V/WATER  
 ALS Vial : 14 Sample Multiplier: 1

Instrument :  
 MSVOA\_V  
 ClientSampleId :  
 F4A32

## Integration Parameters: LSCINT.P

Integrator: RTE  
 Smoothing : OFF  
 Sampling : 1  
 Start Thrs: 0.2  
 Stop Thrs : 0

Filtering: 5  
 Min Area: 0 % of largest Peak  
 Max Peaks: 100  
 Peak Location: TOP

If leading or trailing edge < 100 prefer < Baseline drop else tangent >  
 Peak separation: 5

Method : Z:\VOASRV\HPCHEM1\MSVOA\_V\METHOD\SOMVLM070820WMA.M  
 Title : VOC Analysis

35	6.775	1764	1768	1769	rBV2	589	356	0.04%	0.004%
36	6.785	1769	1771	1776	rVB3	675	502	0.05%	0.006%
37	6.917	1808	1812	1813	rBV2	648	491	0.05%	0.006%
38	7.007	1828	1840	1864	rVV	122351	221155	21.75%	2.579%
39	7.177	1891	1893	1895	rBV3	858	407	0.04%	0.005%
40	7.338	1931	1943	1963	rBV	442083	754088	74.16%	8.793%
41	7.563	2009	2013	2014	rBV2	695	407	0.04%	0.005%
42	7.605	2023	2026	2027	rBV	910	528	0.05%	0.006%
43	7.643	2027	2038	2056	rVV	87935	154962	15.24%	1.807%
44	7.884	2110	2113	2117	rBV4	861	766	0.08%	0.009%
45	7.929	2125	2127	2130	rBV2	720	495	0.05%	0.006%
46	7.997	2138	2148	2167	rVB2	47091	81547	8.02%	0.951%
47	8.109	2173	2183	2214	rBV	205244	390272	38.38%	4.551%
48	8.335	2251	2253	2256	rVB	1329	616	0.06%	0.007%
49	8.399	2269	2273	2275	rBV3	888	796	0.08%	0.009%
50	8.592	2330	2333	2336	rBV2	978	769	0.08%	0.009%
51	8.724	2372	2374	2378	rVV2	725	537	0.05%	0.006%
52	8.743	2378	2380	2386	rVB4	730	637	0.06%	0.007%
53	8.875	2408	2421	2442	rBV	513614	838673	82.48%	9.779%
54	9.158	2505	2509	2512	rBV4	878	853	0.08%	0.010%
55	9.379	2574	2578	2582	rVV3	460	429	0.04%	0.005%
56	9.399	2582	2584	2586	rVV2	747	371	0.04%	0.004%
57	9.441	2595	2597	2602	rVV2	815	524	0.05%	0.006%
58	9.460	2602	2603	2608	rVB2	652	461	0.05%	0.005%
59	9.486	2608	2611	2614	rBV3	1221	831	0.08%	0.010%
60	9.576	2634	2639	2642	rBV5	1021	1011	0.10%	0.012%
61	9.630	2651	2656	2657	rBV3	557	434	0.04%	0.005%
62	9.900	2738	2740	2744	rVB2	471	334	0.03%	0.004%
63	9.965	2758	2760	2762	rVB3	908	383	0.04%	0.004%
64	10.125	2808	2810	2813	rVB2	849	488	0.05%	0.006%
65	10.238	2834	2845	2864	rVV	262531	402444	39.58%	4.693%
66	10.569	2946	2948	2951	rBV3	609	413	0.04%	0.005%
67	10.752	3002	3005	3009	rBV2	687	626	0.06%	0.007%
68	10.904	3048	3052	3054	rBV2	683	489	0.05%	0.006%
69	10.945	3063	3065	3070	rVB3	532	431	0.04%	0.005%
70	11.093	3108	3111	3113	rVB4	1094	561	0.06%	0.007%
71	11.106	3113	3115	3119	rBV2	564	468	0.05%	0.005%

Data Path : Z:\VOASRV\HPCHEM1\MSVOA V\DATA\VV071320\  
 Data File : VV017468.D  
 Acq On : 13 Jul 2020 14:26  
 Operator : SY/MD  
 Sample : L3270-17  
 Misc : 5.0mL/MSVOA V/WATER  
 ALS Vial : 14 Sample Multiplier: 1

Instrument :  
 MSVOA\_V  
 ClientSampleId :  
 F4A32

## Integration Parameters: LSCINT.P

Integrator: RTE  
 Smoothing : OFF Filtering: 5  
 Sampling : 1 Min Area: 0 % of largest Peak  
 Start Thrs: 0.2 Max Peaks: 100  
 Stop Thrs : 0 Peak Location: TOP

If leading or trailing edge < 100 prefer < Baseline drop else tangent >  
 Peak separation: 5

Method : Z:\VOASRV\HPCHEM1\MSVOA\_V\METHOD\SOMVLM070820WMA.M  
 Title : VOC Analysis

72	11.270	3154	3166	3190	rBV	527206	803442	79.01%	9.369%
73	11.563	3248	3257	3262	rBV5	4778	7874	0.77%	0.092%
74	11.646	3271	3283	3306	rBV	459991	724844	71.28%	8.452%
75	11.900	3360	3362	3366	rVB2	852	350	0.03%	0.004%
76	11.981	3384	3387	3390	rVV3	861	602	0.06%	0.007%
77	12.022	3398	3400	3406	rVB3	593	497	0.05%	0.006%
78	12.093	3418	3422	3423	rBV3	641	365	0.04%	0.004%
79	12.260	3470	3474	3475	rBV2	1516	769	0.08%	0.009%
80	12.383	3506	3512	3515	rBV4	1172	1231	0.12%	0.014%
81	12.601	3577	3580	3582	rBV2	728	367	0.04%	0.004%
82	12.717	3613	3616	3619	rBV2	441	354	0.03%	0.004%
83	12.733	3619	3621	3625	rBV3	617	477	0.05%	0.006%
84	12.849	3655	3657	3660	rBV2	710	351	0.03%	0.004%
85	12.987	3696	3700	3702	rBV3	464	396	0.04%	0.005%
86	13.013	3706	3708	3711	rVB3	652	348	0.03%	0.004%
87	13.035	3711	3715	3718	rBV3	917	708	0.07%	0.008%
88	13.119	3740	3741	3746	rBV	706	545	0.05%	0.006%
89	13.257	3781	3784	3787	rBV3	745	611	0.06%	0.007%
90	13.286	3792	3793	3797	rBV3	716	382	0.04%	0.004%
91	13.328	3804	3806	3811	rVB2	737	438	0.04%	0.005%
92	13.434	3837	3839	3842	rBV2	735	458	0.05%	0.005%
93	13.514	3861	3864	3867	rBV2	637	462	0.05%	0.005%
94	13.530	3867	3869	3874	rVV4	702	609	0.06%	0.007%
95	13.588	3884	3887	3889	rBV2	635	429	0.04%	0.005%
96	13.775	3942	3945	3947	rBV2	781	420	0.04%	0.005%
97	13.797	3949	3952	3955	rBV3	812	478	0.05%	0.006%
98	14.399	4136	4139	4142	rBV2	735	451	0.04%	0.005%
99	14.977	4318	4319	4321	rBV2	793	345	0.03%	0.004%
100	15.546	4493	4496	4500	rBV3	1094	983	0.10%	0.011%

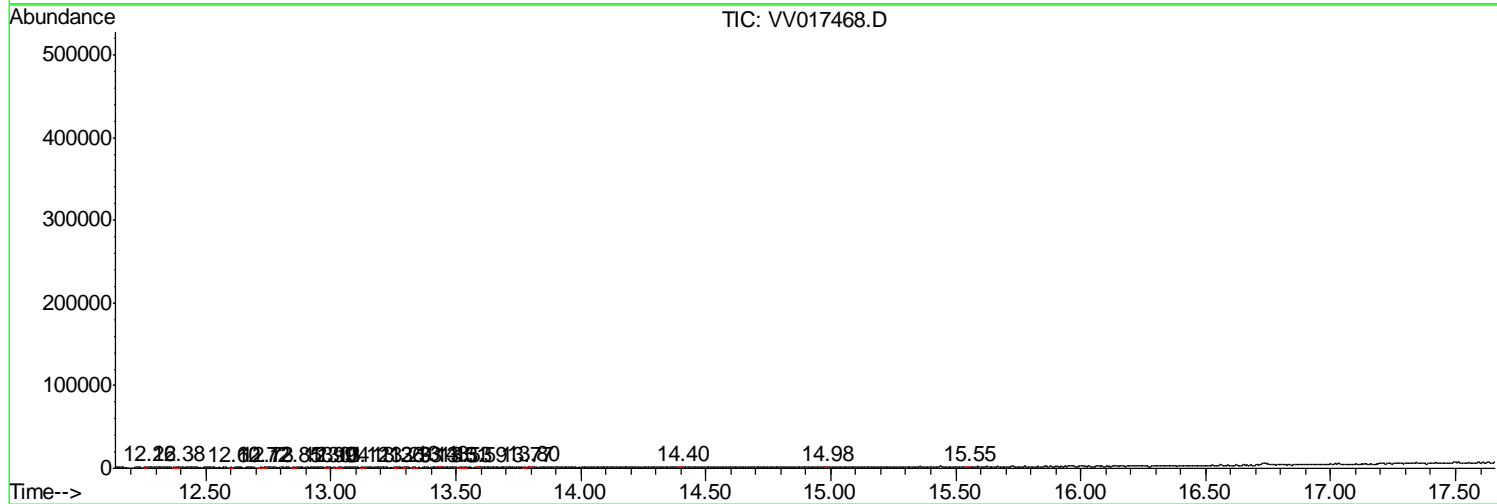
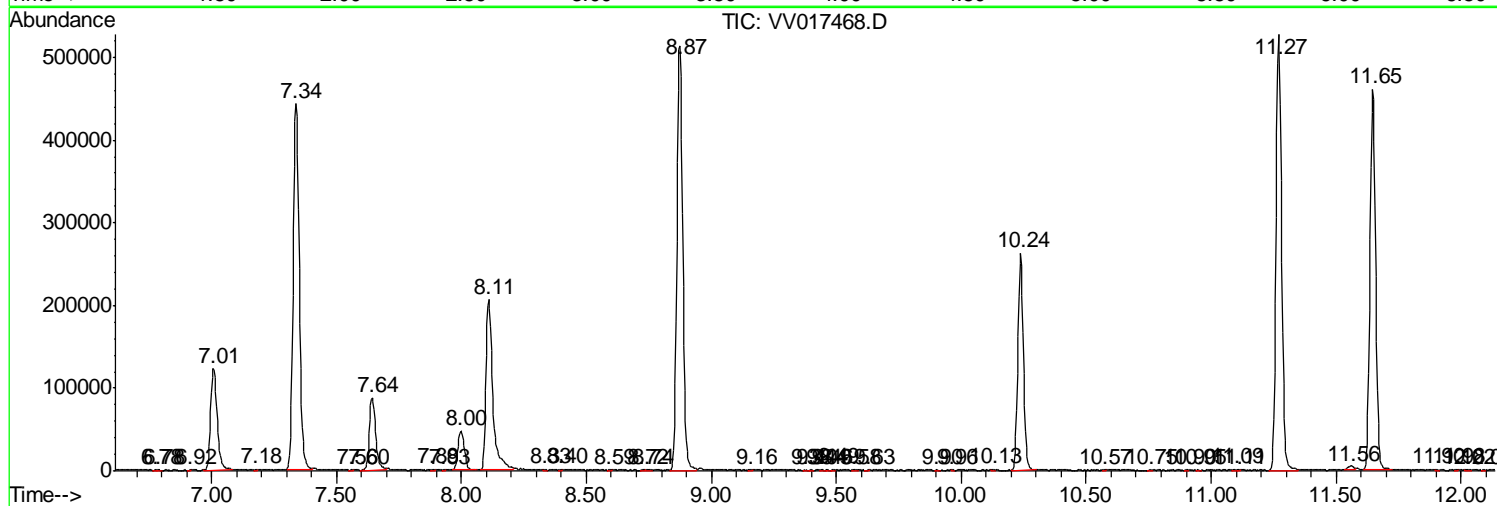
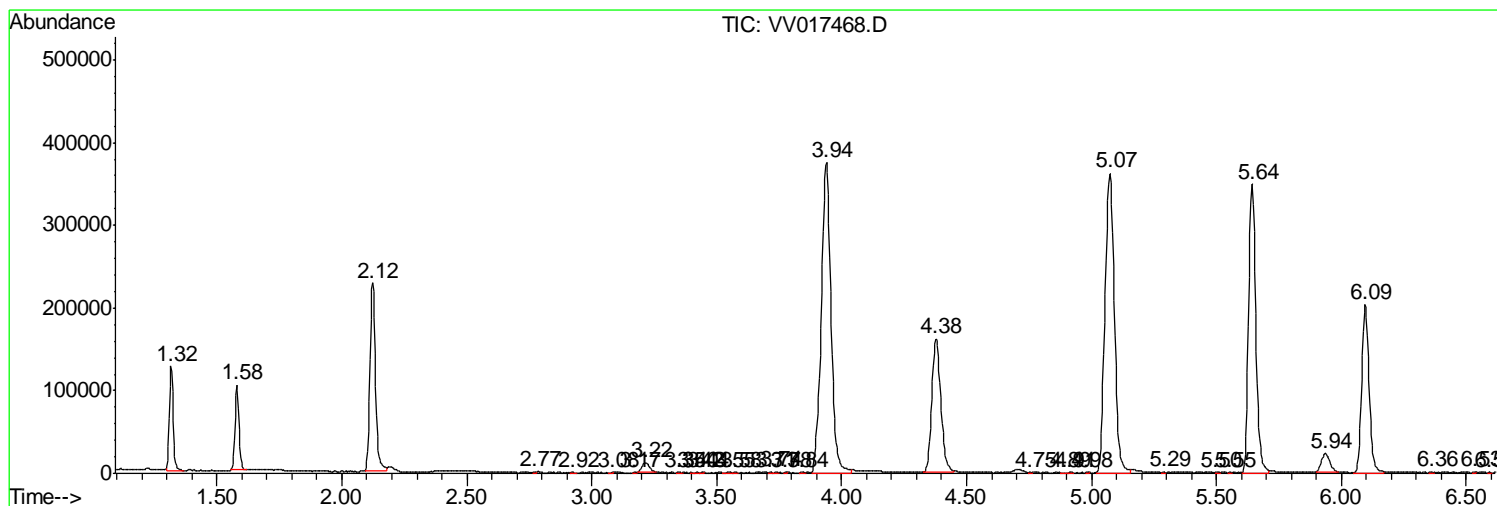
Sum of corrected areas: 8575878

Data Path : Z:\VOASRV\HPCHEM1\MSVOA V\DATA\VV071320\  
 Data File : VV017468.D  
 Acq On : 13 Jul 2020 14:26  
 Operator : SY/MD  
 Sample : L3270-17  
 Misc : 5.0mL/MSVOA V/WATER  
 ALS Vial : 14 Sample Multiplier: 1

Instrument :  
 MSVOA\_V  
 Client Sampled :  
 F4A32

Quant Method : Z:\VOASRV\HPCHEM1\MSVOA\_V\METHOD\SOMVLM070820WMA.M  
 Quant Title : VOC Analysis

TIC Library : C:\DATABASE\NIST11.L  
 TIC Integration Parameters: LSCINT.P



Data Path : Z:\VOASRV\HPCHEM1\MSVOA\_V\DATA\VV071320\  
Data File : VV017468.D  
Acq On : 13 Jul 2020 14:26  
Operator : SY/MD  
Sample : L3270-17  
Misc : 5.0mL/MSVOA\_V/WATER  
ALS Vial : 14 Sample Multiplier: 1

Instrument :  
MSVOA\_V  
ClientSampleId :  
F4A32

Quant Method : Z:\VOASRV\HPCHEM1\MSVOA\_V\METHOD\SOMVLM070820WMA.M  
Quant Title : VOC Analysis

TIC Library : C:\DATABASE\NIST11.L  
TIC Integration Parameters: LSCINT.P

No Library Search Compounds Detected

\*\*\*\*\*

Data Path : Z:\VOASRV\HPCHEM1\MSVOA\_V\DATA\VV071320\  
Data File : VV017468.D  
Acq On : 13 Jul 2020 14:26  
Operator : SY/MD  
Sample : L3270-17  
Misc : 5.0mL/MSVOA\_V/WATER  
ALS Vial : 14 Sample Multiplier: 1

Instrument :  
MSVOA\_V  
ClientSampleId :  
F4A32

Quant Method : Z:\VOASRV\HPCHEM1\MSVOA\_V\METHOD\SOMVLM070820WMA.M  
Quant Title : VOC Analysis

TIC Library : C:\DATABASE\NIST11.L  
TIC Integration Parameters: LSCINT.P

TIC Top Hit name	RT	EstConc	Units	Response	--Internal Standard--			
					#	RT	Resp	Conc

---