

Data Path : Z:\voasrv\HPCHEM1\MSVOA\_V\Data\VV071322\  
 Data File : VV026751.D  
 Acq On : 13 Jul 2022 14:23  
 Operator : SY/MD  
 Sample : N3601-19DL 250X  
 Misc : 25.0mL/MSVOA\_V/WATER  
 ALS Vial : 11 Sample Multiplier: 1

Instrument :  
 MSVOA\_V  
 ClientSampleId :  
 DBUB2DL

Integration Parameters: rteint.p  
 Integrator: RTE  
 Smoothing : ON Filtering: 5  
 Sampling : 1 Min Area: 3 % of largest Peak  
 Start Thrs: 0.1 Max Peaks: 100  
 Stop Thrs : 0 Peak Location: TOP

If leading or trailing edge < 100 prefer < Baseline drop else tangent >  
 Peak separation: 5

Method : Z:\voasrv\HPCHEM1\MSVOA\_V\Method\SFAMVTR071122WMA.M  
 Title : TRACE VOA SFAM1.0

Signal : TIC: VV026751.D\data.ms

peak #	R.T. min	first scan	max scan	last scan	PK TY	peak height	corr. area	corr. % max.	% of total
1	1.301	74	81	94	rVB	148826	149955	16.61%	1.840%
2	1.561	155	162	178	rVB	136249	159288	17.64%	1.955%
3	2.101	320	330	351	rVB	267209	404141	44.76%	4.959%
4	2.503	444	455	468	rVB3	13697	22816	2.53%	0.280%
5	2.757	526	534	547	rVB7	4671	9302	1.03%	0.114%
6	3.905	878	891	935	rBV6	148370	506240	56.06%	6.212%
7	4.346	1011	1028	1058	rVB	165393	423492	46.90%	5.197%
8	5.043	1229	1245	1274	rBV3	360733	902989	100.00%	11.081%
9	5.612	1408	1422	1453	rBV	256393	534430	59.18%	6.558%
10	5.911	1502	1515	1548	rBV	213820	435932	48.28%	5.349%
11	6.069	1551	1564	1586	rBV	215256	446646	49.46%	5.481%
12	6.989	1839	1850	1871	rBV	62380	124055	13.74%	1.522%
13	7.313	1940	1951	1976	rBV	357015	642052	71.10%	7.879%
14	7.625	2038	2048	2070	rBV	36834	69518	7.70%	0.853%
15	7.972	2145	2156	2183	rVB	337362	565528	62.63%	6.940%
16	8.088	2183	2192	2243	rBV	350199	759669	84.13%	9.322%
17	8.419	2285	2295	2311	rVB3	9940	17340	1.92%	0.213%
18	8.850	2418	2429	2453	rBV	402976	668389	74.02%	8.202%
19	10.217	2840	2854	2871	rBV	160884	259865	28.78%	3.189%
20	11.249	3162	3175	3199	rBV	336753	526583	58.32%	6.462%
21	11.622	3280	3291	3318	rBV2	318678	520876	57.68%	6.392%

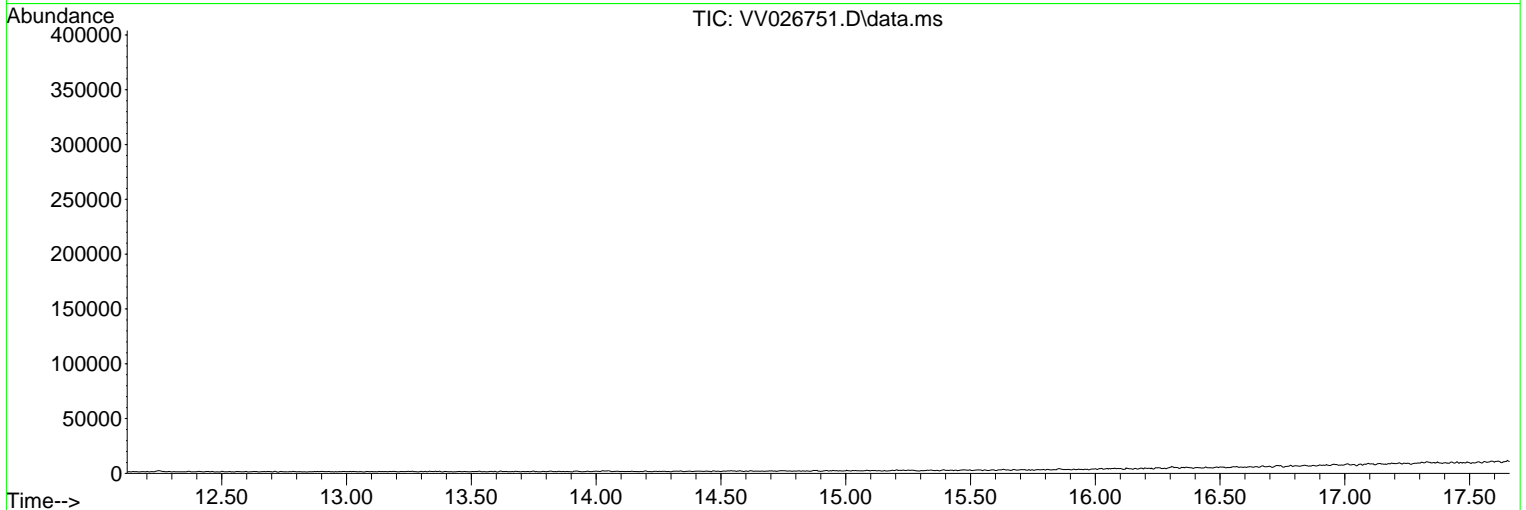
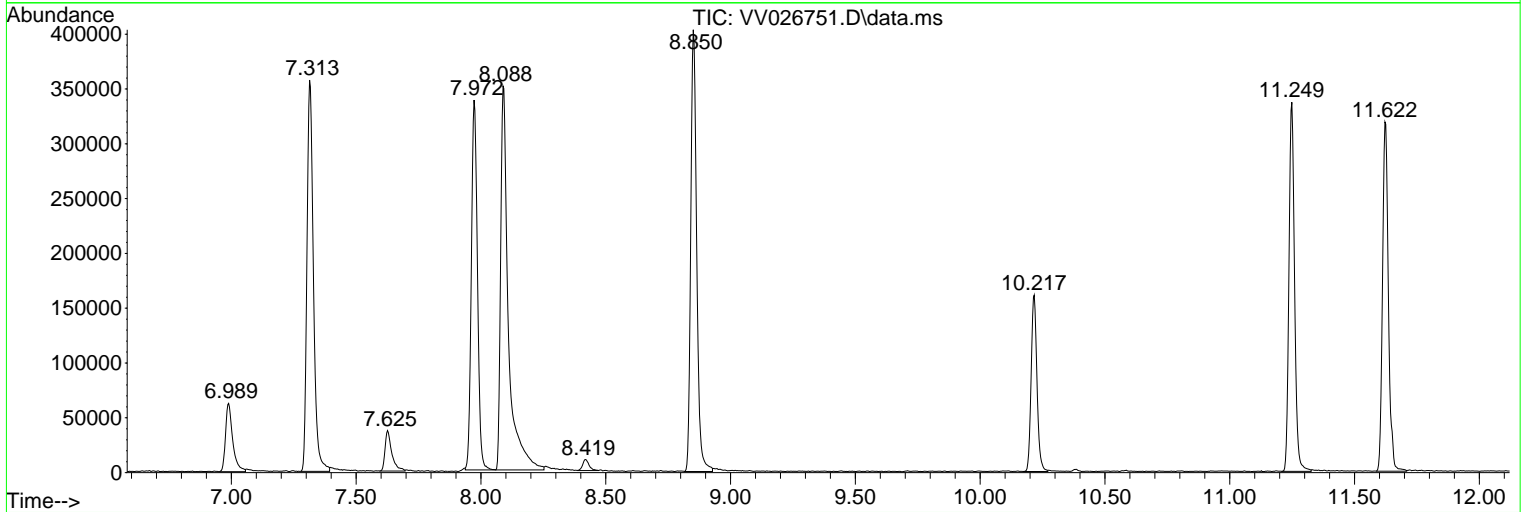
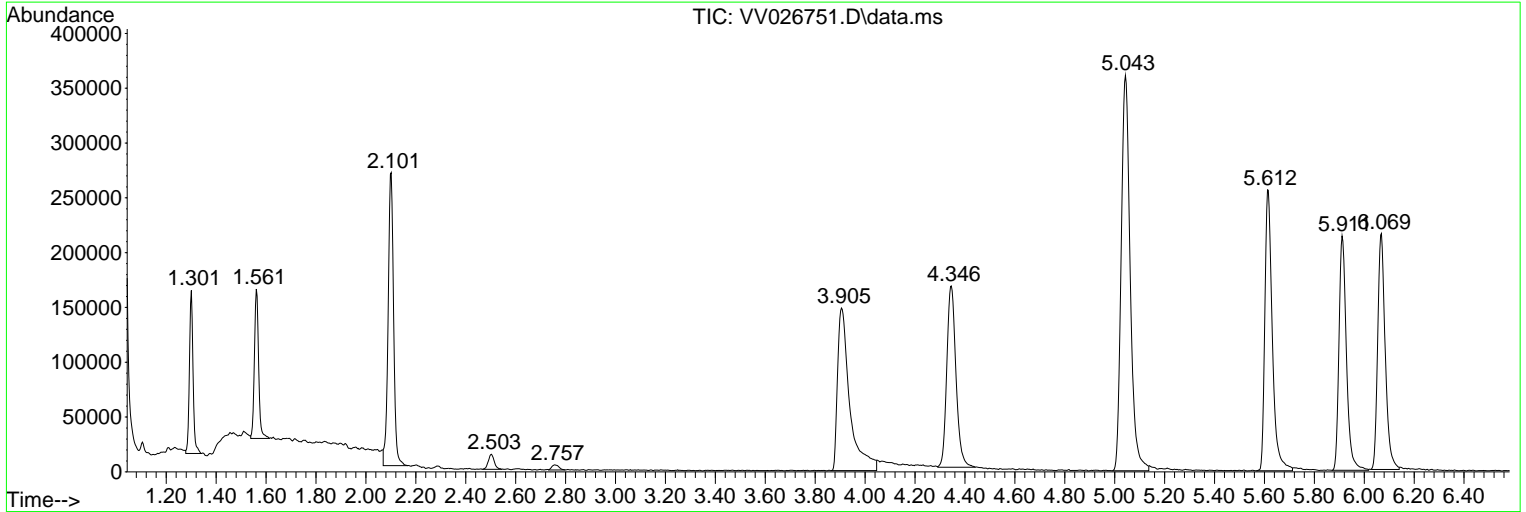
Sum of corrected areas: 8149106

Data Path : Z:\voasrv\HPCHEM1\MSVOA\_V\Data\VV071322\  
 Data File : VV026751.D  
 Acq On : 13 Jul 2022 14:23  
 Operator : SY/MD  
 Sample : N3601-19DL 250X  
 Misc : 25.0mL/MSVOA\_V/WATER  
 ALS Vial : 11 Sample Multiplier: 1

Instrument :  
 MSVOA\_V  
 ClientSampleId :  
 DBUB2DL

Quant Method : Z:\voasrv\HPCHEM1\MSVOA\_V\Method\SFAMVTR071122WMA.M  
 Quant Title : TRACE VOA SFAM1.0

TIC Library : C:\Database\NIST20.L  
 TIC Integration Parameters: LSCINT.P



Library Search Compound Report

Data Path : Z:\voasrv\HPCHEM1\MSVOA\_V\Data\VV071322\  
Data File : VV026751.D  
Acq On : 13 Jul 2022 14:23  
Operator : SY/MD  
Sample : N3601-19DL 250X  
Misc : 25.0mL/MSVOA\_V/WATER  
ALS Vial : 11 Sample Multiplier: 1

Instrument :  
MSVOA\_V  
ClientSampleId :  
DBUB2DL

Quant Method : Z:\voasrv\HPCHEM1\MSVOA\_V\Method\SFAMVTR071122WMA.M  
Quant Title : TRACE VOA SFAM1.0

TIC Library : C:\Database\NIST20.L  
TIC Integration Parameters: LSCINT.P

No Library Search Compounds Detected

\*\*\*\*\*

Data Path : Z:\voasrv\HPCHEM1\MSVOA\_V\Data\VV071322\  
Data File : VV026751.D  
Acq On : 13 Jul 2022 14:23  
Operator : SY/MD  
Sample : N3601-19DL 250X  
Misc : 25.0mL/MSVOA\_V/WATER  
ALS Vial : 11 Sample Multiplier: 1

Instrument :  
MSVOA\_V  
ClientSampleId :  
DBUB2DL

Quant Method : Z:\voasrv\HPCHEM1\MSVOA\_V\Method\SFAMVTR071122WMA.M  
Quant Title : TRACE VOA SFAM1.0

TIC Library : C:\Database\NIST0.L  
TIC Integration Parameters: LSCINT.P

TIC Top Hit name	RT	EstConc	Units	Response	--Internal Standard--			
					#	RT	Resp	Conc

---