

Data Path : Z:\VOASRV\HPCHEM1\MSVOA V\DATA\VV071420\
 Data File : VV017485.D
 Acq On : 14 Jul 2020 15:37
 Operator : SY/MD
 Sample : L3260-01
 Misc : 25.0mL/MSVOA V/WATER
 ALS Vial : 16 Sample Multiplier: 1

Instrument :
 MSVOA_V
 Client Sampled :
 X2M71

Quant Time: Jul 15 04:16:36 2020
 Quant Method : Z:\VOASRV\HPCHEM1\MSVOA_V\METHOD\SOMVTR071420WMA.M
 Quant Title : TRACE VOA SOM01.0
 QLast Update : Wed Jul 15 02:49:58 2020
 Response via : Initial Calibration

Internal Standards	R.T.	QIon	Response	Conc	Units	Dev(Min)
1) 1,4-Difluorobenzene	5.64	114	140536	5.00	ug/L	0.00
28) Chlorobenzene-d5	8.87	117	138532	5.00	ug/L	0.00
61) 1,4-Dichlorobenzene-d4	11.27	152	73625	5.00	ug/L	0.00

System Monitoring Compounds

4) Vinyl Chloride-d3	1.32	65	38907	4.76	ug/L	0.00
Spiked Amount	5.000	Range	40 - 130	Recovery	=	95.20%
7) Chloroethane-d5	1.58	69	31187	4.80	ug/L	0.00
Spiked Amount	5.000	Range	65 - 130	Recovery	=	96.00%
11) 1,1-Dichloroethene-d2	2.13	63	70731	3.96	ug/L	0.00
Spiked Amount	5.000	Range	60 - 125	Recovery	=	79.20%
20) 2-Butanone-d5	3.95	46	85431	50.93	ug/L	0.00
Spiked Amount	50.000	Range	40 - 130	Recovery	=	101.86%
24) Chloroform-d	4.38	84	85267	4.65	ug/L	0.00
Spiked Amount	5.000	Range	70 - 125	Recovery	=	93.00%
26) 1,2-Dichloroethane-d4	5.06	65	49380	5.06	ug/L	0.00
Spiked Amount	5.000	Range	70 - 130	Recovery	=	101.20%
32) Benzene-d6	5.08	84	153666	4.79	ug/L	0.00
Spiked Amount	5.000	Range	70 - 125	Recovery	=	95.80%
36) 1,2-Dichloropropane-d6	6.10	67	41650	4.70	ug/L	0.00
Spiked Amount	5.000	Range	60 - 140	Recovery	=	94.00%
41) Toluene-d8	7.34	98	148371	4.75	ug/L	0.00
Spiked Amount	5.000	Range	70 - 130	Recovery	=	95.00%
45) trans-1,3-Dichloropropene-	7.65	79	19908	4.62	ug/L	0.00
Spiked Amount	5.000	Range	55 - 130	Recovery	=	92.40%
48) 2-Hexanone-d5	8.11	63	67231	52.27	ug/L	0.00
Spiked Amount	50.000	Range	45 - 130	Recovery	=	104.54%
59) 1,1,2,2-Tetrachloroethane-	10.24	84	29397	4.67	ug/L	0.00
Spiked Amount	5.000	Range	65 - 120	Recovery	=	93.40%
65) 1,2-Dichlorobenzene-d4	11.65	152	60012	4.77	ug/L	0.00
Spiked Amount	5.000	Range	80 - 120	Recovery	=	95.40%

Target Compounds

Target Compounds	R.T.	QIon	Response	Conc	Units	Ovalue
6) Bromomethane	1.53	94	12152	1.775	ug/L	93
12) 1,1-Dichloroethene	2.14	96	17873	2.114	ug/L #	62
13) Acetone	2.20	43	73721	60.536	ug/L	74
14) Carbon disulfide	2.31	76	191140	7.302	ug/L	99
15) Methyl Acetate	2.46	43	101021	42.945	ug/L	99
16) Methylene chloride	2.53	84	41161	4.042	ug/L	95
17) Methyl tert-butyl Ether	2.79	73	225300	10.724	ug/L	97
21) 2-Butanone	4.04	43	63493	33.730	ug/L #	49
22) cis-1,2-Dichloroethene	3.94	96	61631	6.270	ug/L	98
27) 1,2-Dichloroethane	5.16	62	64413	5.208	ug/L	98
30) Cyclohexane	4.70	56	154293	10.347	ug/L	98
33) Benzene	5.13	78	181895	4.935	ug/L	100
34) Trichloroethene	5.94	95	38062	3.382	ug/L	95
35) Methylcyclohexane	6.15	83	325145	19.632	ug/L	98
40) 4-Methyl-2-pentanone	7.25	43	131948	29.256	ug/L	99
42) Toluene	7.41	91	652130	16.022	ug/L	99
49) Tetrachloroethene	8.00	164	42709	4.459	ug/L	96

Data Path : Z:\VOASRV\HPCHEM1\MSVOA V\DATA\VV071420\
 Data File : VV017485.D
 Acq On : 14 Jul 2020 15:37
 Operator : SY/MD
 Sample : L3260-01
 Misc : 25.0mL/MSVOA V/WATER
 ALS Vial : 16 Sample Multiplier: 1

Instrument :
 MSVOA_V
 ClientSampleId :
 X2M71

Quant Time: Jul 15 04:16:36 2020
 Quant Method : Z:\VOASRV\HPCHEM1\MSVOA_V\METHOD\SOMVTR071420WMA.M
 Quant Title : TRACE VOA SOM01.0
 QLast Update : Wed Jul 15 02:49:58 2020
 Response via : Initial Calibration

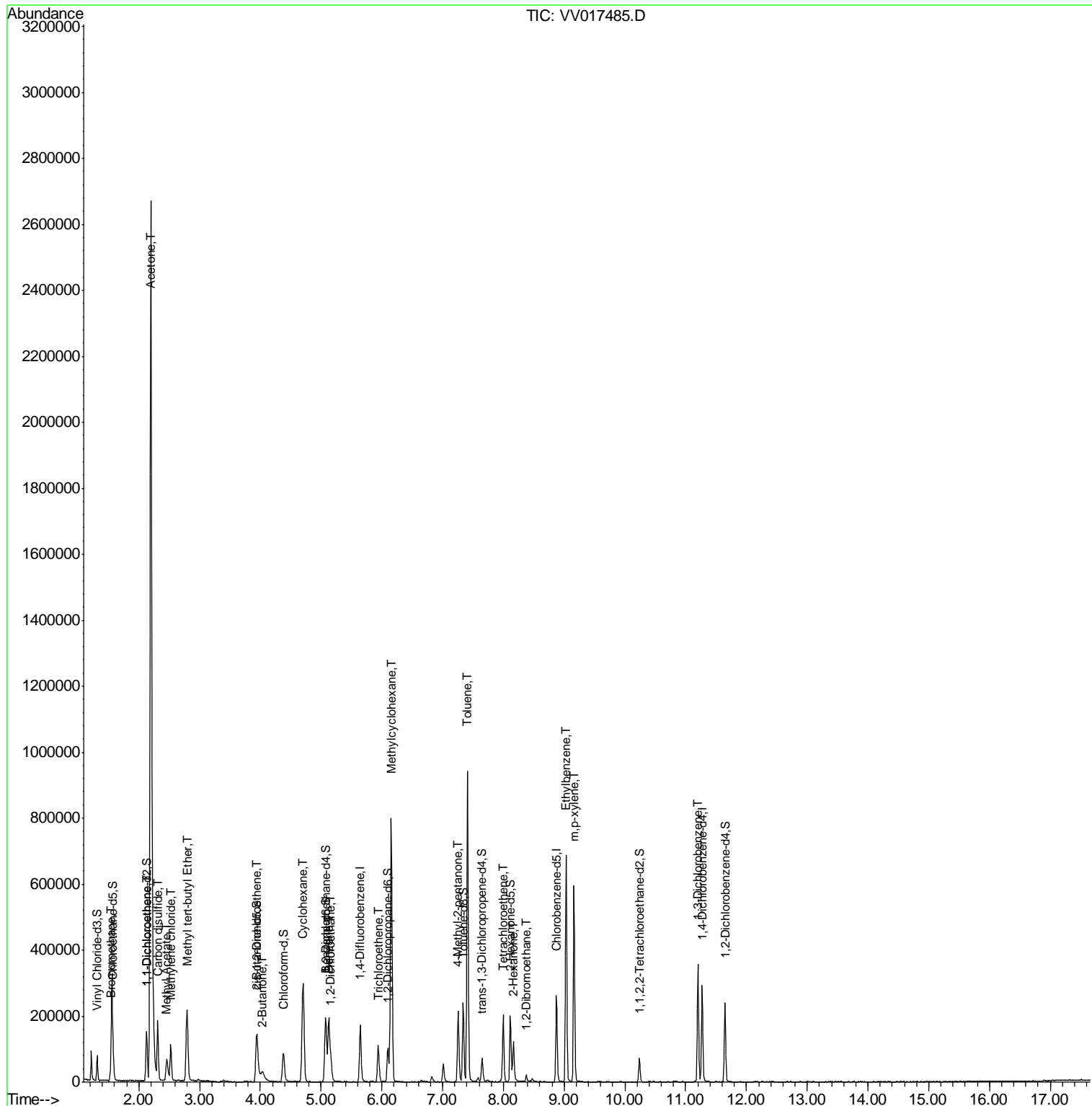
Internal Standards	R.T.	QIon	Response	Conc	Units	Dev(Min)
50) 2-Hexanone	8.16	43	76150	22.981	ug/L	99
52) 1,2-Dibromoethane	8.38	107	11576	1.853	ug/L #	99
54) Ethylbenzene	9.04	91	453844	9.742	ug/L	99
55) m,p-xylene	9.16	106	151189	8.583	ug/L	99
63) 1,3-Dichlorobenzene	11.20	146	140838	6.153	ug/L	97

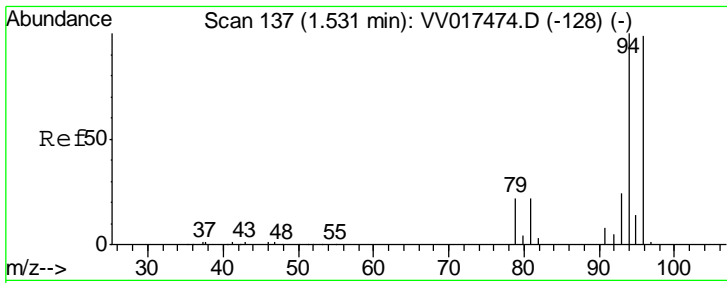
(#) = qualifier out of range (m) = manual integration (+) = signals summed

Data Path : Z:\VOASRV\HPCHEM1\MSVOA V\DATA\VV071420\
 Data File : VV017485.D
 Acq On : 14 Jul 2020 15:37
 Operator : SY/MD
 Sample : L3260-01
 Misc : 25.0mL/MSVOA V/WATER
 ALS Vial : 16 Sample Multiplier: 1

Instrument :
 MSVOA_V
 ClientSampled :
 X2M71

Quant Time: Jul 15 04:16:36 2020
 Quant Method : Z:\VOASRV\HPCHEM1\MSVOA_V\METHOD\SOMVTR071420WMA.M
 Quant Title : TRACE VOA SOM01.0
 QLast Update : Wed Jul 15 02:49:58 2020
 Response via : Initial Calibration

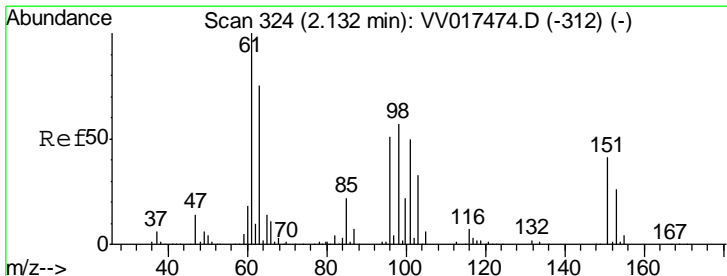
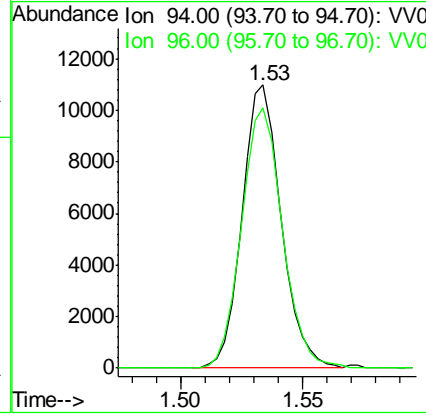
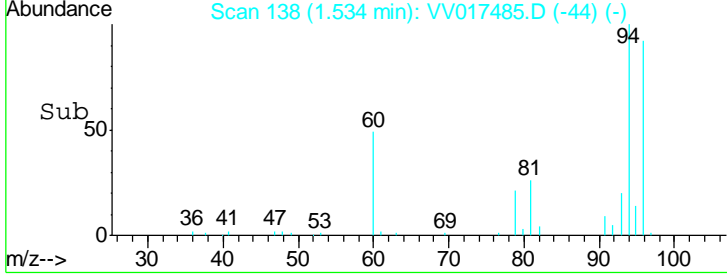
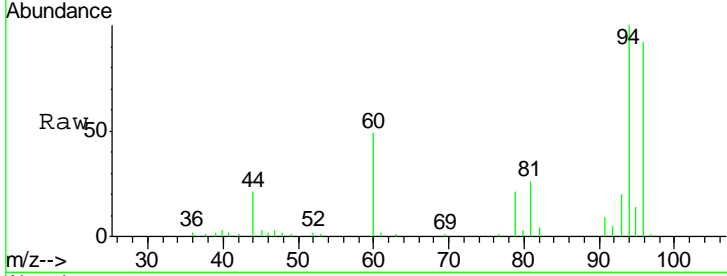




#6
 Bromomethane
 Concen: 1.775 ug/L
 RT: 1.53 min Scan# 138
 Delta R.T. 0.00 min
 Lab File: VV017485.D
 Acq: 14 Jul 2020 15:37

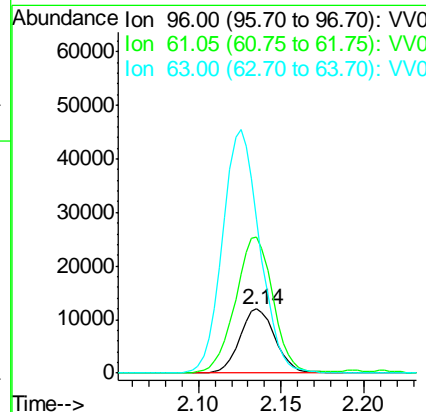
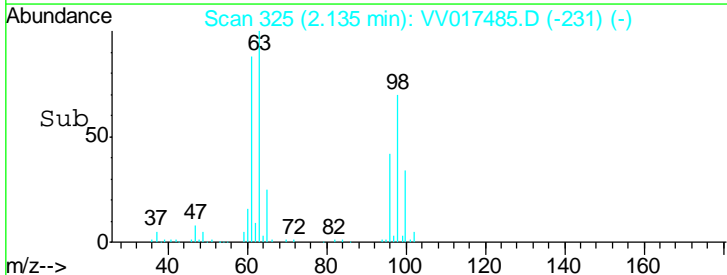
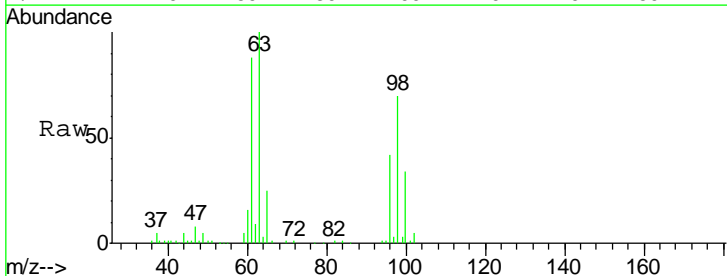
Instrument : MSVOA_V
 ClientSampled : X2M71

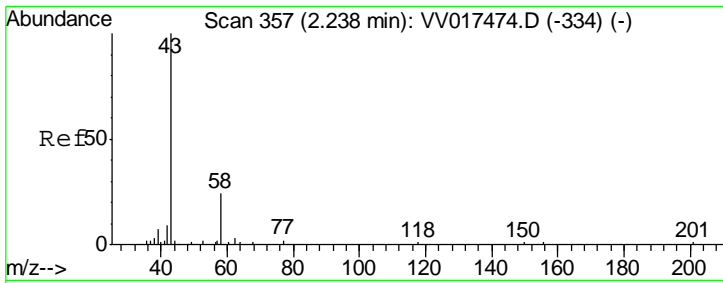
Tgt Ion: 94 Resp: 12152
 Ion Ratio Lower Upper
 94 100
 96 91.8 69.0 128.2



#12
 1,1-Dichloroethene
 Concen: 2.114 ug/L
 RT: 2.14 min Scan# 325
 Delta R.T. 0.00 min
 Lab File: VV017485.D
 Acq: 14 Jul 2020 15:37

Tgt Ion: 96 Resp: 17873
 Ion Ratio Lower Upper
 96 100
 61 212.9 137.2 254.8
 63 241.0 103.6 192.4#

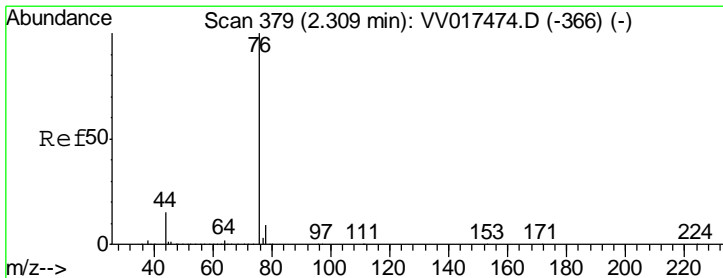
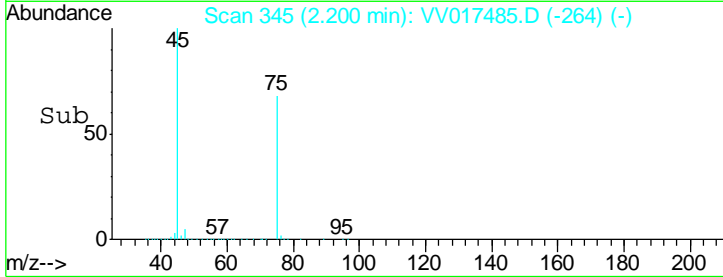
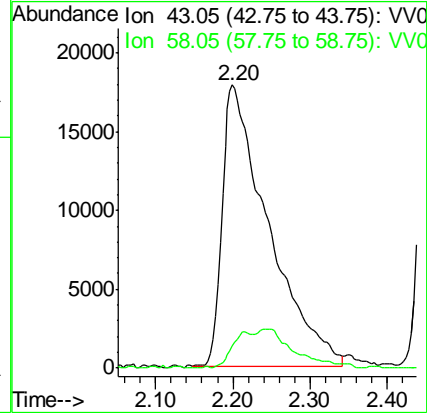
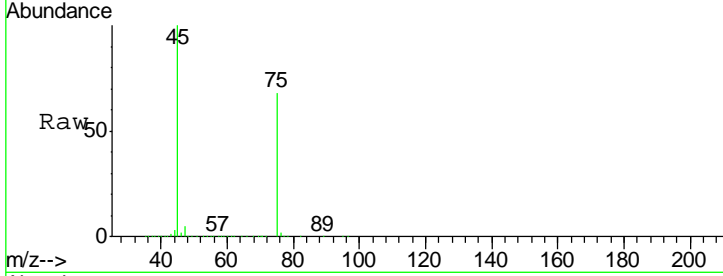




#13
 Acetone
 Concen: 60.536 ug/L
 RT: 2.20 min Scan# 345
 Delta R.T. -0.04 min
 Lab File: VV017485.D
 Acq: 14 Jul 2020 15:37

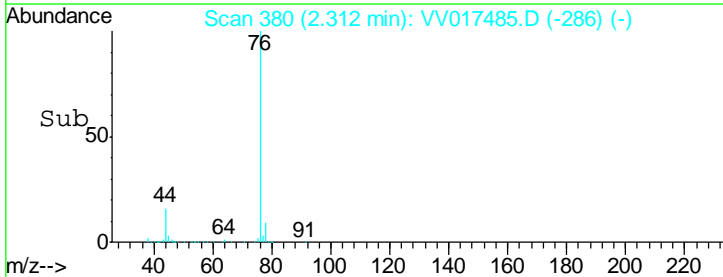
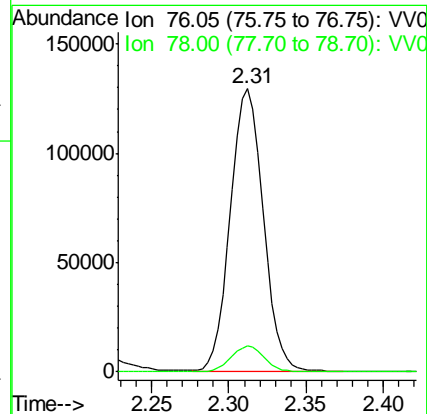
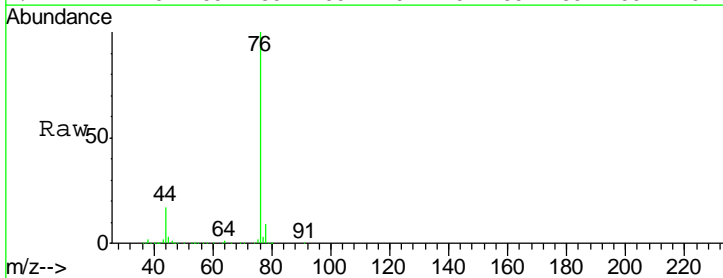
Instrument : MSVOA_V
 ClientSampled : X2M71

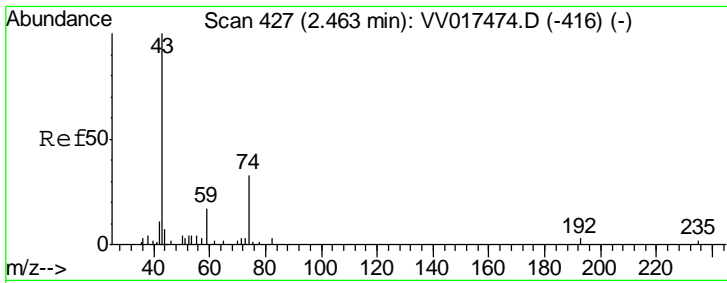
Tgt Ion: 43 Resp: 73721
 Ion Ratio Lower Upper
 43 100
 58 5.7 0.0 33.6



#14
 Carbon disulfide
 Concen: 7.302 ug/L
 RT: 2.31 min Scan# 380
 Delta R.T. 0.00 min
 Lab File: VV017485.D
 Acq: 14 Jul 2020 15:37

Tgt Ion: 76 Resp: 191140
 Ion Ratio Lower Upper
 76 100
 78 9.1 7.5 11.3

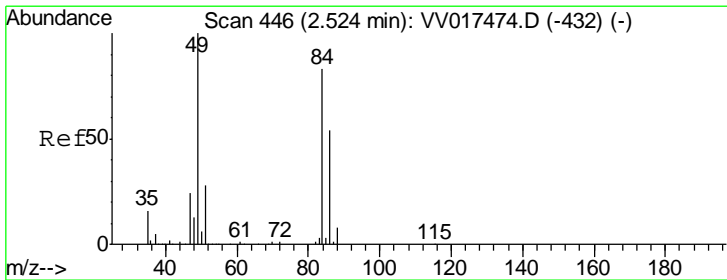
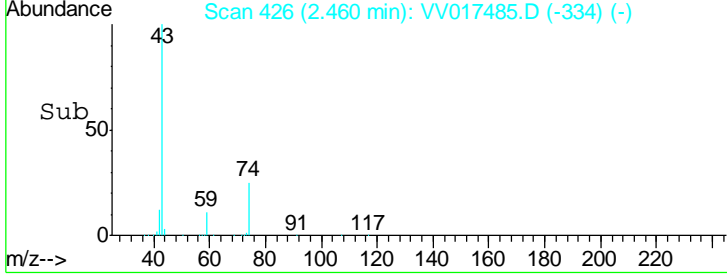
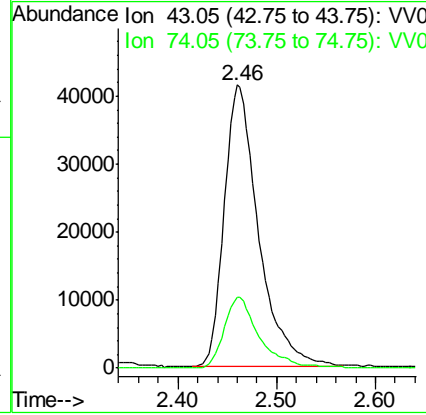
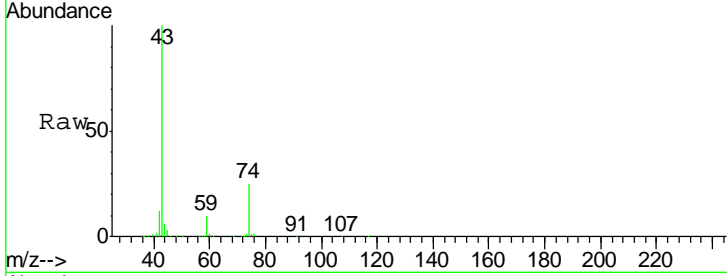




#15
 Methyl Acetate
 Concen: 42.945 ug/L
 RT: 2.46 min Scan# 426
 Delta R.T. -0.00 min
 Lab File: VV017485.D
 Acq: 14 Jul 2020 15:37

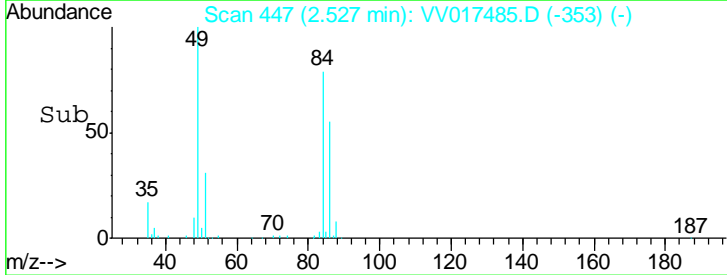
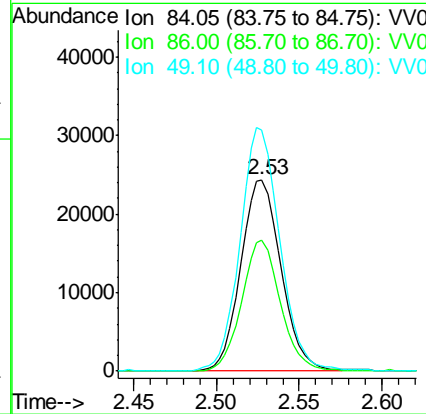
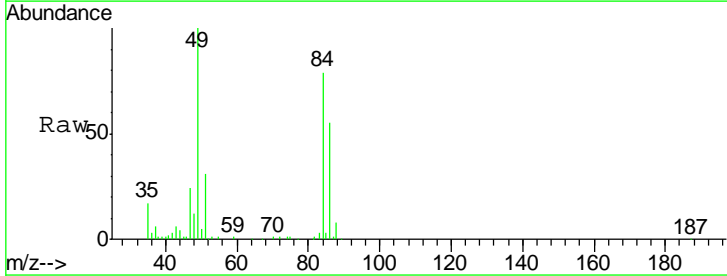
Instrument : MSVOA_V
 ClientSampled : X2M71

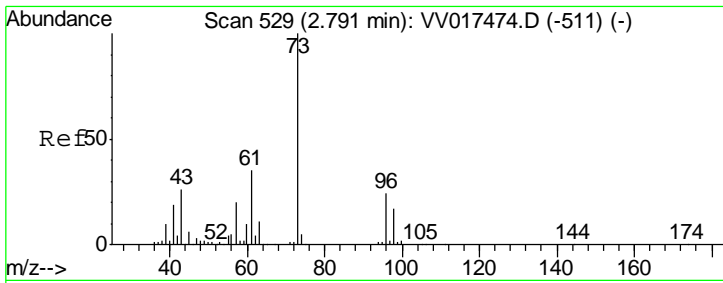
Tgt Ion	Resp	Lower	Upper
43	101021		
74	25.2	20.5	30.7



#16
 Methylene chloride
 Concen: 4.042 ug/L
 RT: 2.53 min Scan# 447
 Delta R.T. 0.00 min
 Lab File: VV017485.D
 Acq: 14 Jul 2020 15:37

Tgt Ion	Resp	Lower	Upper
84	41161		
86	68.8	45.5	84.5
49	125.9	84.6	157.0

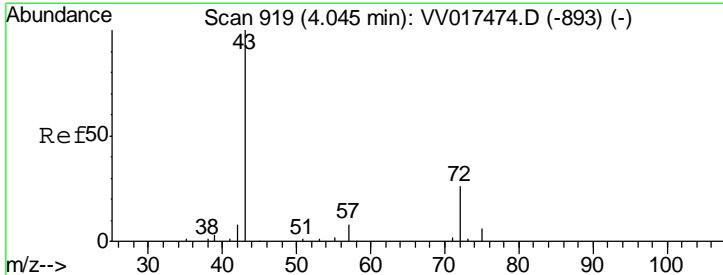
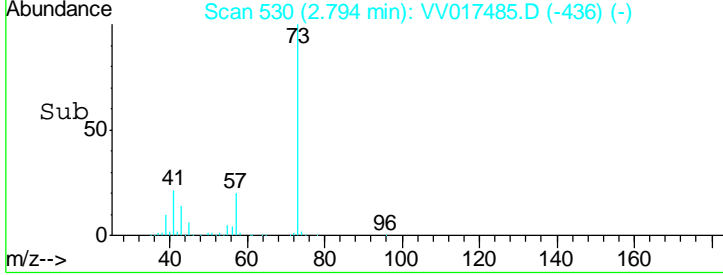
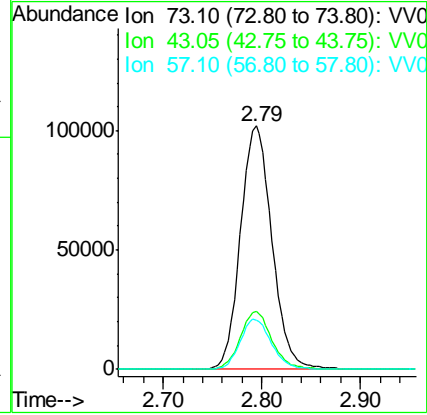
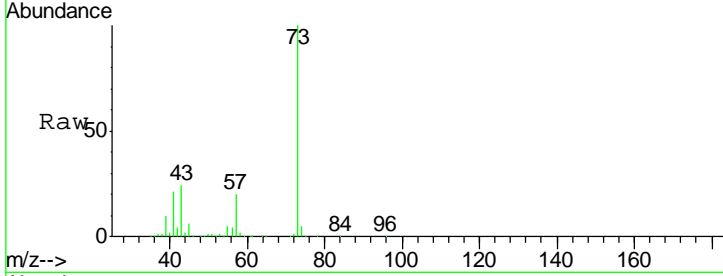




#17
 Methyl tert-butyl Ether
 Concen: 10.724 ug/L
 RT: 2.79 min Scan# 530
 Delta R.T. 0.00 min
 Lab File: VV017485.D
 Acq: 14 Jul 2020 15:37

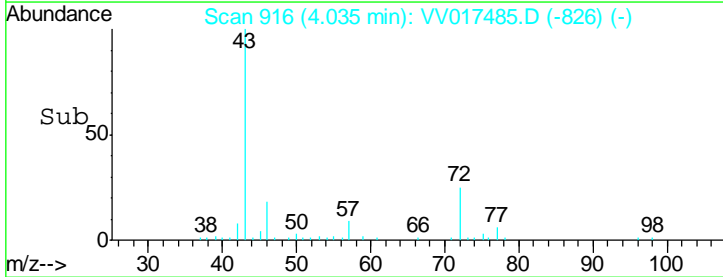
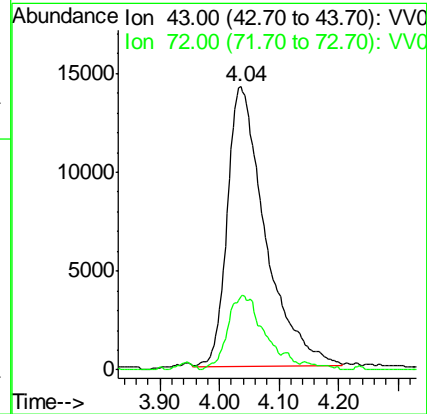
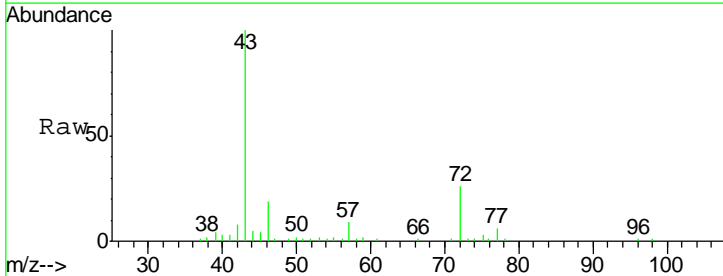
Instrument :
 MSVOA_V
 ClientSampled :
 X2M71

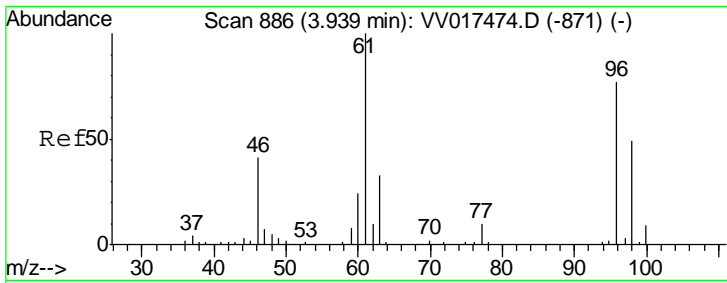
Tgt Ion	Resp	Lower	Upper
73	100		
43	23.1	20.4	30.6
57	20.7	16.7	25.1



#21
 2-Butanone
 Concen: 33.730 ug/L
 RT: 4.04 min Scan# 916
 Delta R.T. -0.01 min
 Lab File: VV017485.D
 Acq: 14 Jul 2020 15:37

Tgt Ion	Resp	Lower	Upper
43	100		
72	24.0	3.4	10.1#

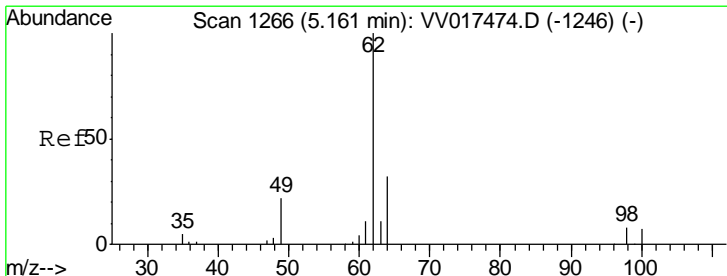
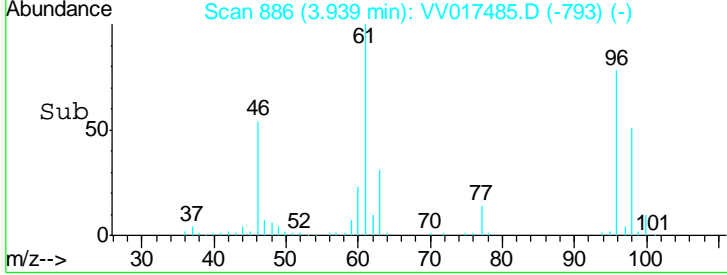
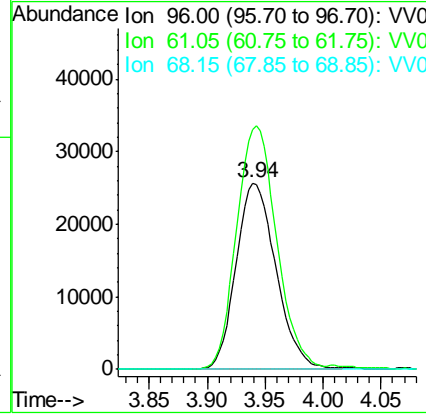
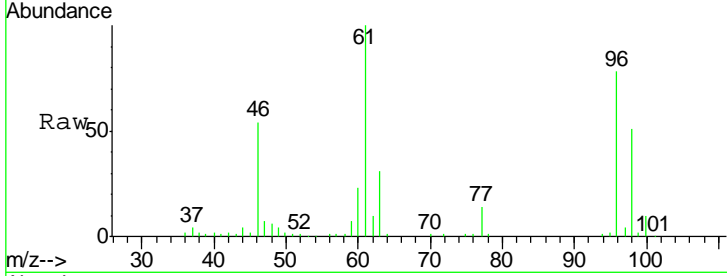




#22
 cis-1,2-Dichloroethene
 Concen: 6.270 ug/L
 RT: 3.94 min Scan# 886
 Delta R.T. -0.00 min
 Lab File: VV017485.D
 Acq: 14 Jul 2020 15:37

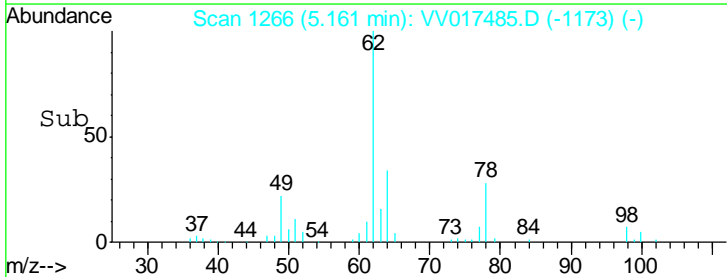
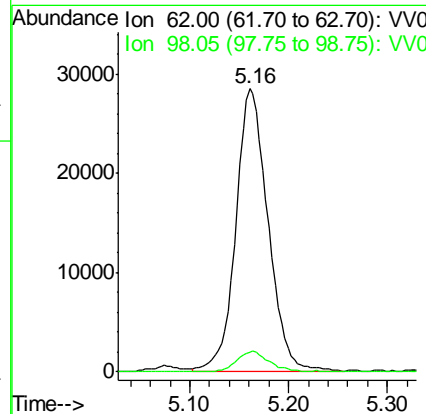
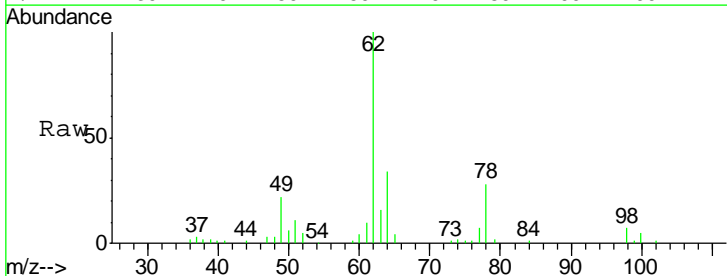
Instrument : MSVOA_V
 ClientSampled : X2M71

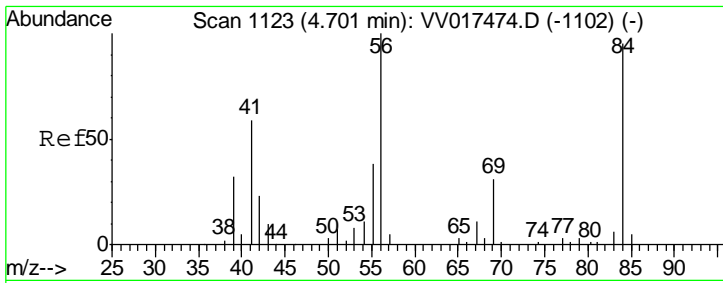
Tgt Ion	Resp	Lower	Upper
96	61631		
61	128.6	91.5	169.9
68	0.0	0.0	0.0



#27
 1,2-Dichloroethane
 Concen: 5.208 ug/L
 RT: 5.16 min Scan# 1266
 Delta R.T. -0.00 min
 Lab File: VV017485.D
 Acq: 14 Jul 2020 15:37

Tgt Ion	Resp	Lower	Upper
62	64413		
98	7.0	6.2	9.2

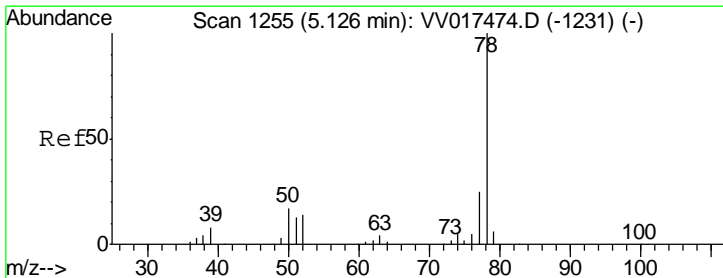
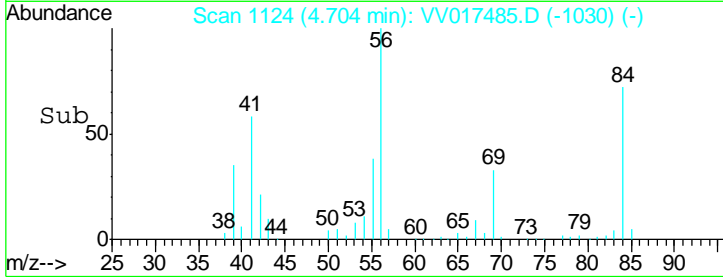
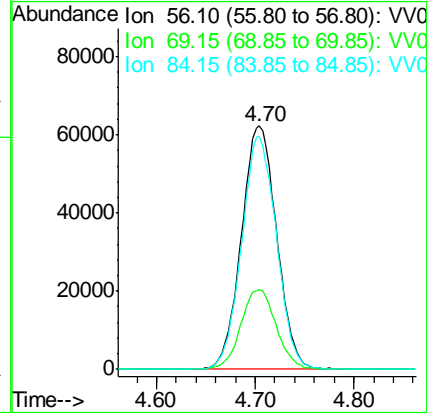
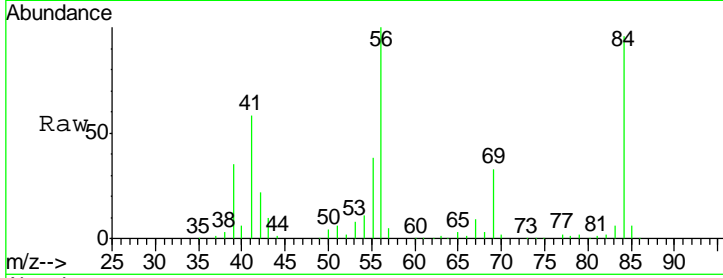




#30
 Cyclohexane
 Concen: 10.347 ug/L
 RT: 4.70 min Scan# 1124
 Delta R.T. 0.00 min
 Lab File: VV017485.D
 Acq: 14 Jul 2020 15:37

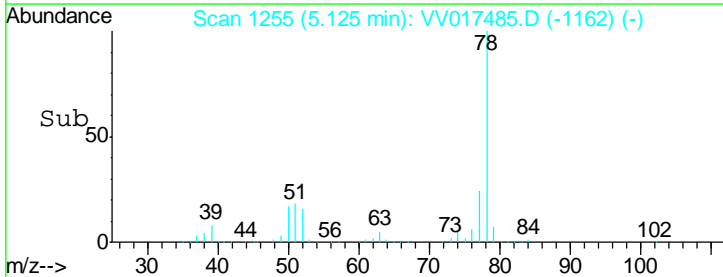
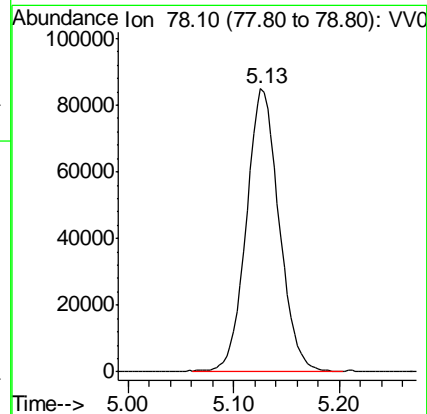
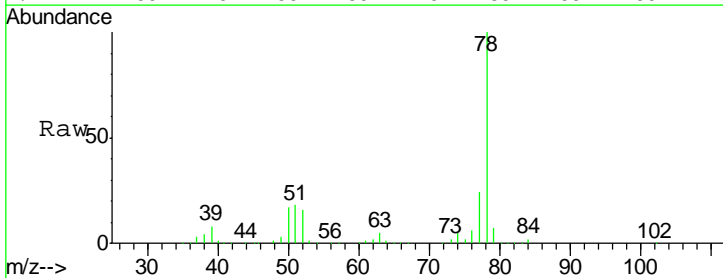
Instrument :
 MSVOA_V
 ClientSampled :
 X2M71

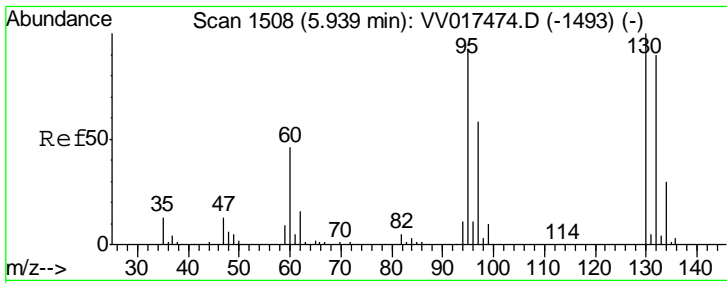
Tgt Ion	Resp	Lower	Upper
56	154293		
69	32.9	26.0	39.0
84	94.7	77.9	116.9



#33
 Benzene
 Concen: 4.935 ug/L
 RT: 5.13 min Scan# 1255
 Delta R.T. -0.00 min
 Lab File: VV017485.D
 Acq: 14 Jul 2020 15:37

Tgt Ion: 78 Resp: 181895

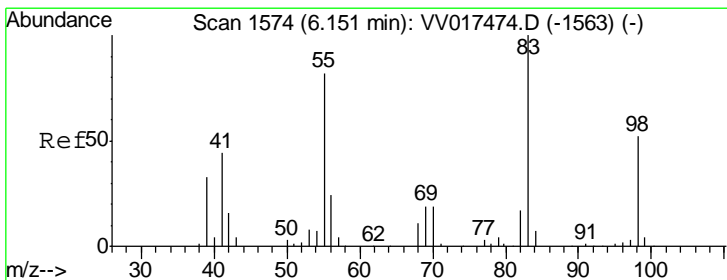
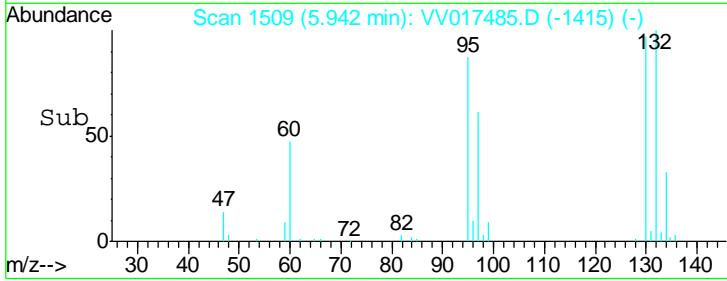
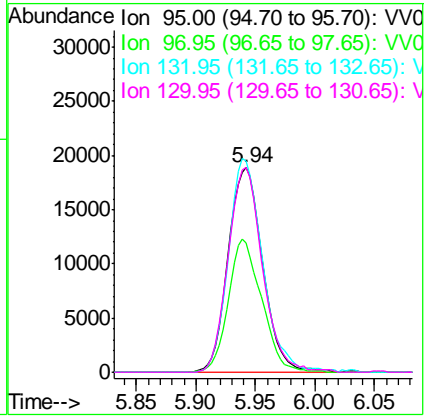
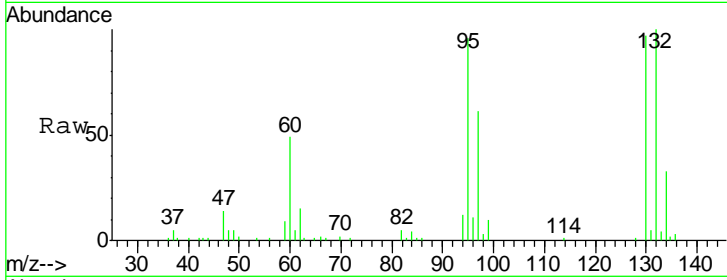




#34
 Trichloroethene
 Concen: 3.382 ug/L
 RT: 5.94 min Scan# 1509
 Delta R.T. 0.00 min
 Lab File: VV017485.D
 Acq: 14 Jul 2020 15:37

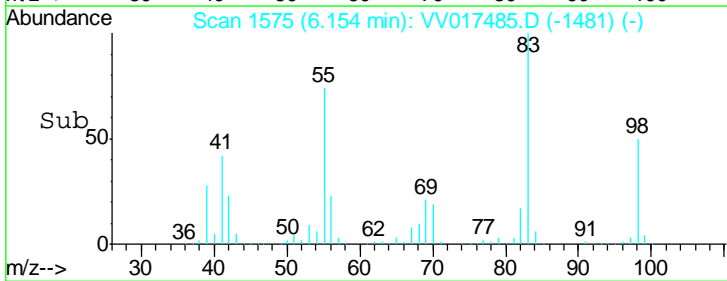
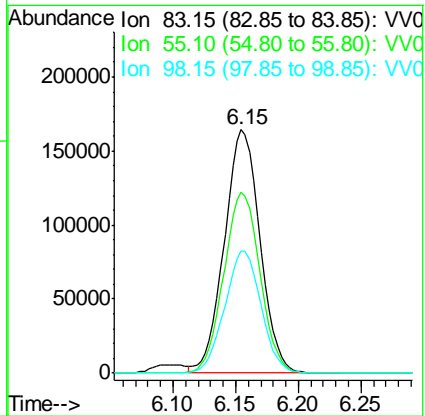
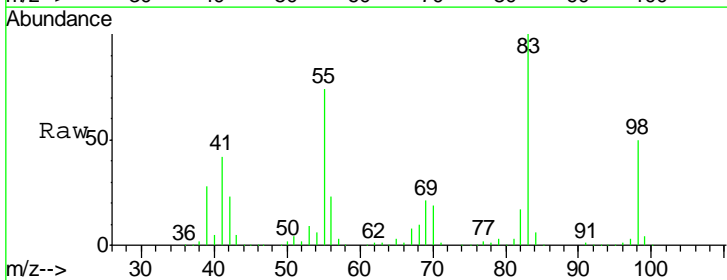
Instrument : MSVOA_V
 ClientSampled : X2M71

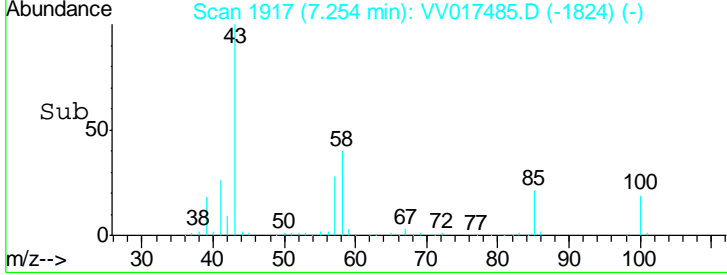
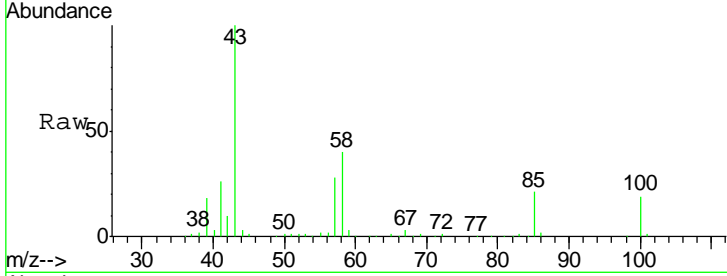
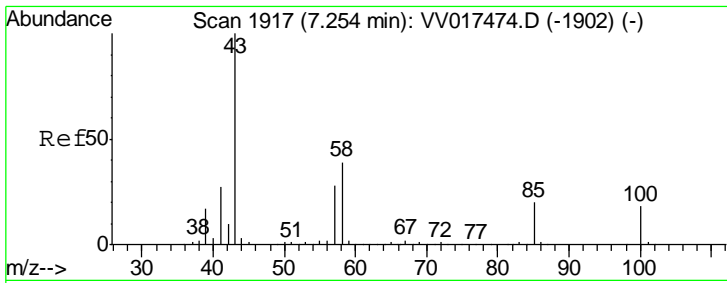
Tgt Ion	Resp	Lower	Upper
95	38062		
97	63.4	43.9	81.5
132	103.7	67.9	126.1
130	100.3	75.2	139.6



#35
 Methylcyclohexane
 Concen: 19.632 ug/L
 RT: 6.15 min Scan# 1575
 Delta R.T. 0.00 min
 Lab File: VV017485.D
 Acq: 14 Jul 2020 15:37

Tgt Ion	Resp	Lower	Upper
83	325145		
55	75.4	62.0	93.0
98	50.9	41.4	62.2

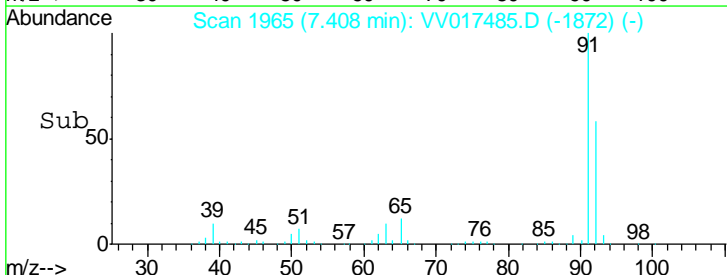
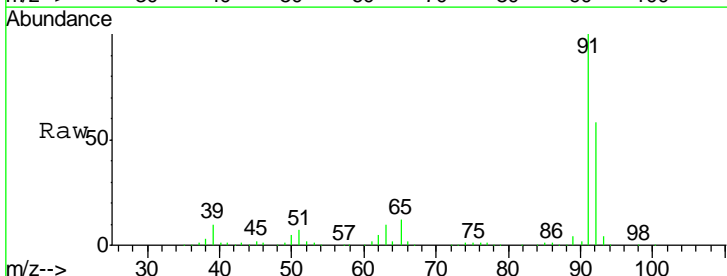
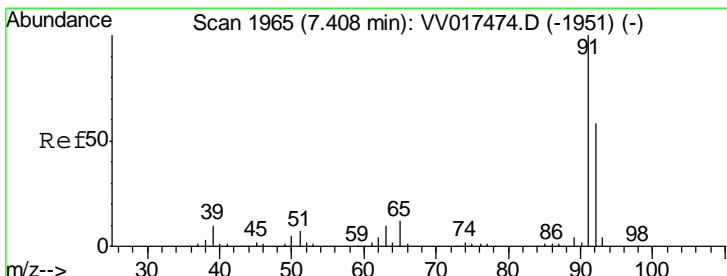
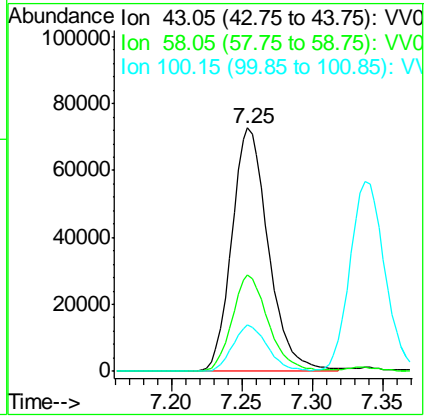




#40
 4-Methyl-2-pentanone
 Concen: 29.256 ug/L
 RT: 7.25 min Scan# 1917
 Delta R.T. -0.00 min
 Lab File: VV017485.D
 Acq: 14 Jul 2020 15:37

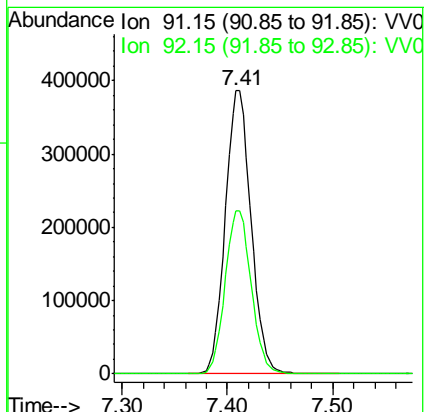
Instrument :
 MSVOA_V
 ClientSampled :
 X2M71

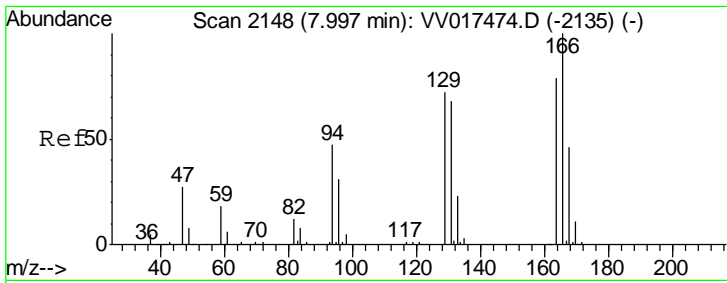
Tgt Ion	Resp	Lower	Upper
43	131948		
58	39.0	31.0	46.4
100	18.2	14.4	21.6



#42
 Toluene
 Concen: 16.022 ug/L
 RT: 7.41 min Scan# 1965
 Delta R.T. -0.00 min
 Lab File: VV017485.D
 Acq: 14 Jul 2020 15:37

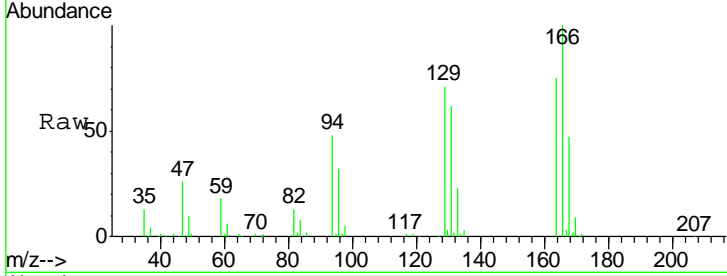
Tgt Ion	Resp	Lower	Upper
91	652130		
92	57.6	40.7	75.5





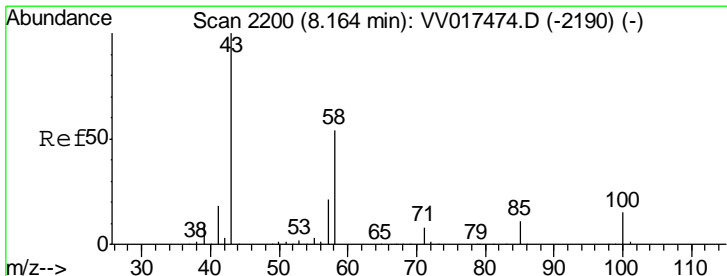
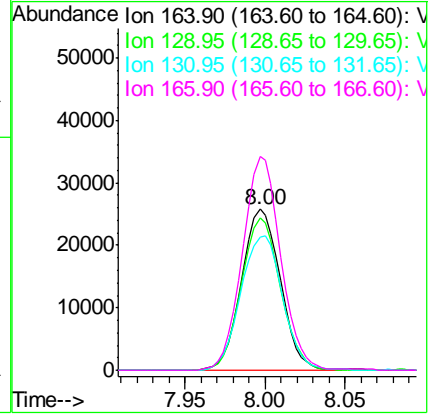
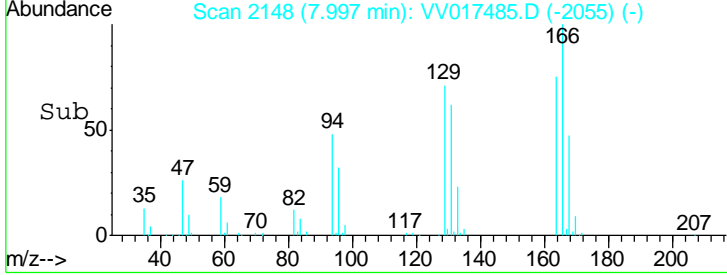
#49
 Tetrachloroethene
 Concen: 4.459 ug/L
 RT: 8.00 min Scan# 2148
 Delta R.T. -0.00 min
 Lab File: VV017485.D
 Acq: 14 Jul 2020 15:37

Instrument : MSVOA_V
 ClientSampled : X2M71

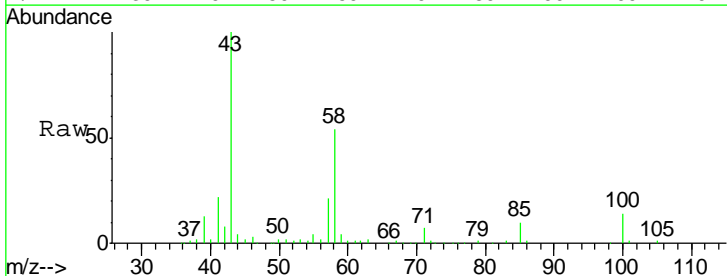


Tgt Ion: 164 Resp: 42709

Ion	Ratio	Lower	Upper
164	100		
129	94.5	64.1	119.1
131	82.7	60.6	112.6
166	132.7	88.8	164.8

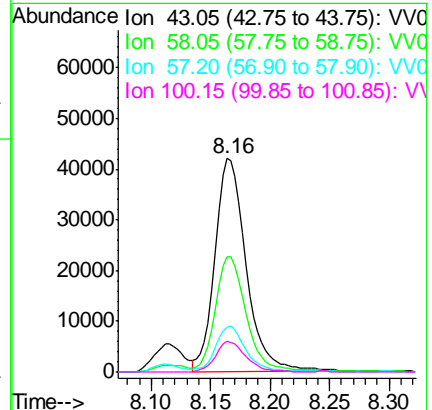
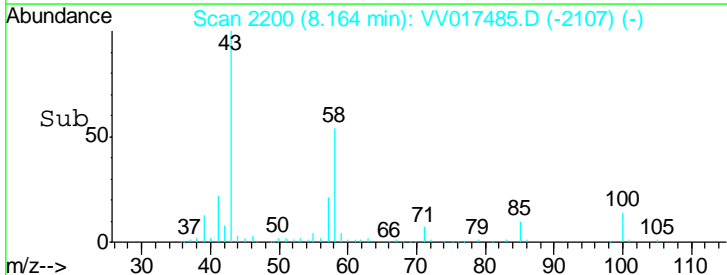


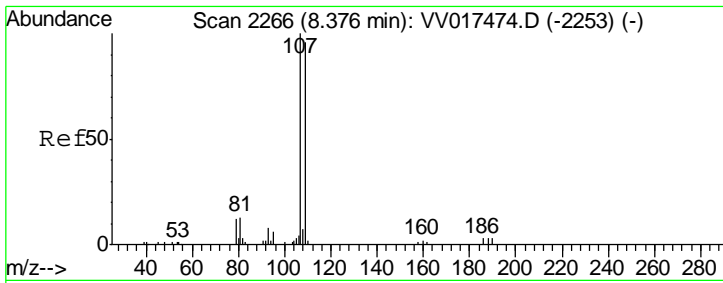
#50
 2-Hexanone
 Concen: 22.981 ug/L
 RT: 8.16 min Scan# 2200
 Delta R.T. -0.00 min
 Lab File: VV017485.D
 Acq: 14 Jul 2020 15:37



Tgt Ion: 43 Resp: 76150

Ion	Ratio	Lower	Upper
43	100		
58	53.0	43.0	64.4
57	19.9	16.8	25.2
100	14.0	11.8	17.6

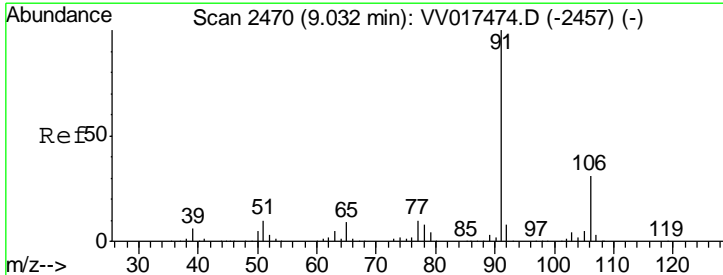
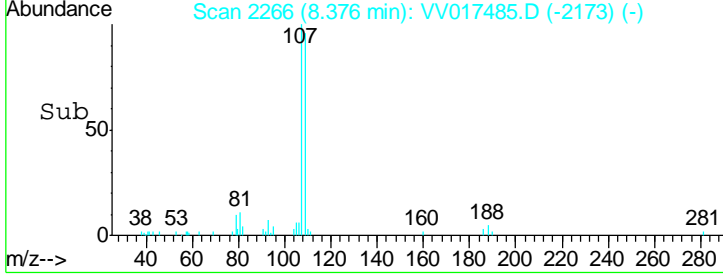
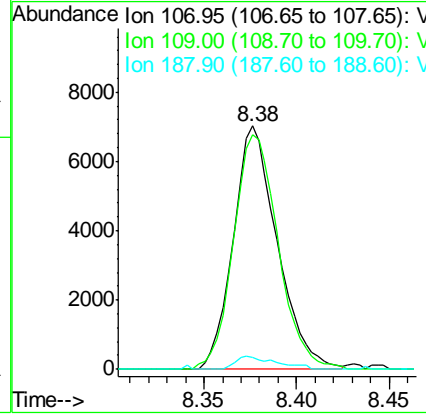
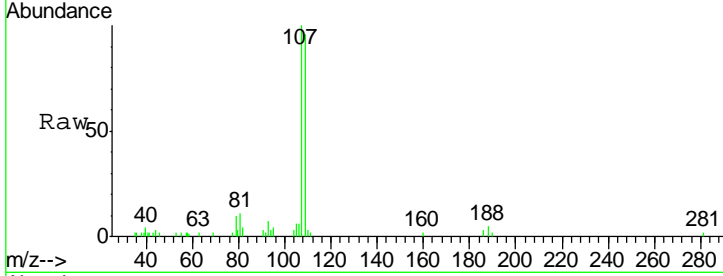




#52
 1,2-Dibromoethane
 Concen: 1.853 ug/L
 RT: 8.38 min Scan# 2266
 Delta R.T. -0.00 min
 Lab File: VV017485.D
 Acq: 14 Jul 2020 15:37

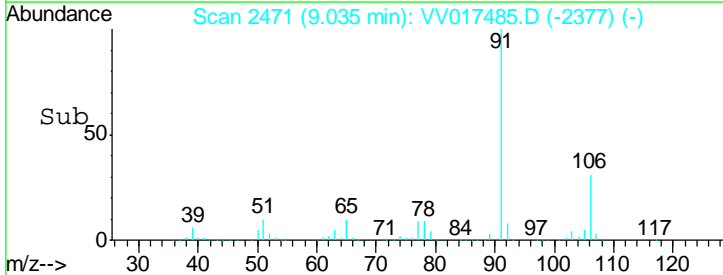
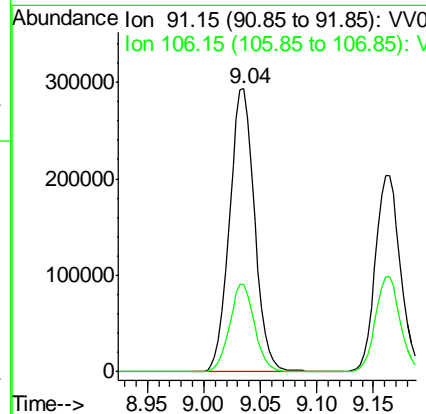
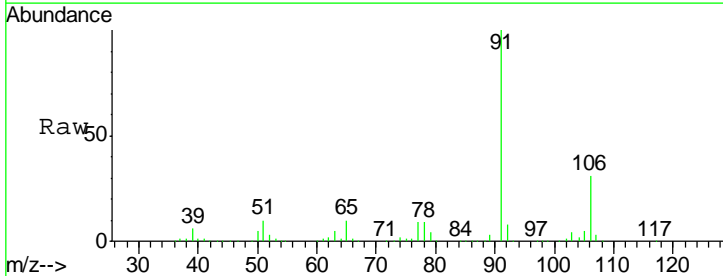
Instrument : MSVOA_V
 ClientSampled : X2M71

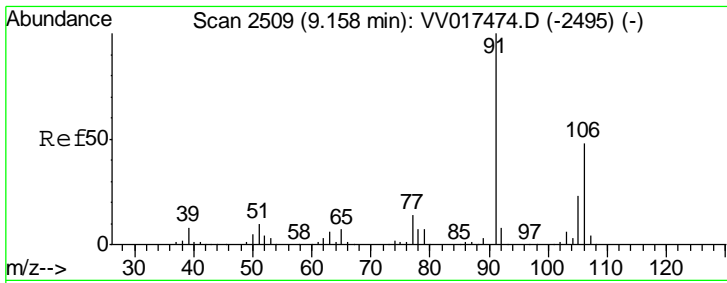
Tgt Ion	Resp	Lower	Upper
107	11576		
109	96.3	67.0	124.4
188	5.0	2.7	4.1#



#54
 Ethylbenzene
 Concen: 9.742 ug/L
 RT: 9.04 min Scan# 2471
 Delta R.T. 0.00 min
 Lab File: VV017485.D
 Acq: 14 Jul 2020 15:37

Tgt Ion	Resp	Lower	Upper
91	453844		
106	30.8	21.9	40.7

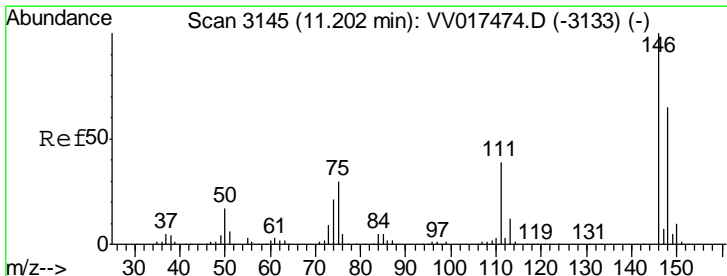
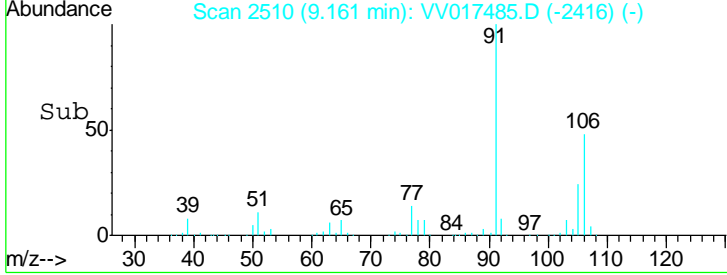
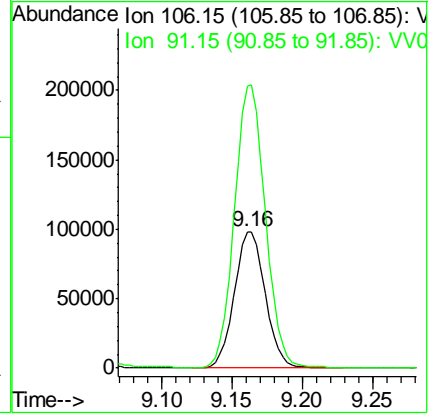
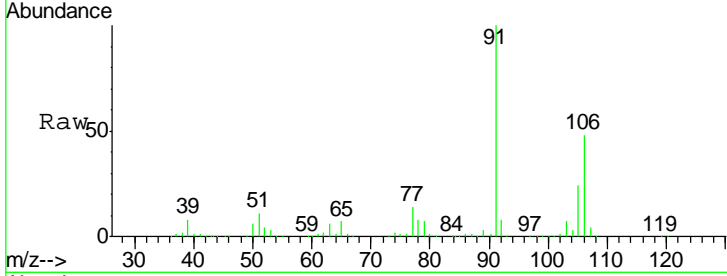




#55
 m,p-xylene
 Concen: 8.583 ug/L
 RT: 9.16 min Scan# 2510
 Delta R.T. 0.00 min
 Lab File: VV017485.D
 Acq: 14 Jul 2020 15:37

Instrument :
 MSVOA_V
ClientSampled :
 X2M71

Tgt Ion:	106	Resp:	151189
Ion Ratio	Lower	Upper	
106	100		
91	206.8	144.2	267.8



#63
 1,3-Dichlorobenzene
 Concen: 6.153 ug/L
 RT: 11.20 min Scan# 3145
 Delta R.T. -0.00 min
 Lab File: VV017485.D
 Acq: 14 Jul 2020 15:37

Tgt Ion:	146	Resp:	140838
Ion Ratio	Lower	Upper	
146	100		
111	38.1	27.2	50.6
148	62.3	45.6	84.6

