

Data Path : Z:\VOASRV\HPCHEM1\MSVOA V\DATA\VV071420\
 Data File : VV017496.D
 Acq On : 14 Jul 2020 20:26
 Operator : SY/MD
 Sample : L3281-14
 Misc : 25.0mL/MSVOA V/WATER
 ALS Vial : 28 Sample Multiplier: 1

Instrument :
 MSVOA_V
 ClientSampled :
 GAXX4

Integration Parameters: rteint.p

Integrator: RTE
 Smoothing : ON Filtering: 5
 Sampling : 1 Min Area: 3 % of largest Peak
 Start Thrs: 0.1 Max Peaks: 100
 Stop Thrs : 0 Peak Location: TOP

If leading or trailing edge < 100 prefer < Baseline drop else tangent >
 Peak separation: 5

Method : Z:\VOASRV\HPCHEM1\MSVOA_V\METHOD\SOMVTR071420WMA.M
 Title : TRACE VOA SOM01.0

Signal : TIC

peak #	R.T. min	first scan	max scan	last scan	PK TY	peak height	corr. area	corr. % max.	% of total
1	1.116	3	8	22	rVB	81246	77362	17.86%	1.908%
2	1.225	36	42	48	rBV	37835	33661	7.77%	0.830%
3	1.315	61	70	81	rBV2	99979	114114	26.35%	2.815%
4	1.579	144	152	164	rVB	54918	64117	14.80%	1.582%
5	1.647	165	173	181	rBV	25308	31119	7.18%	0.768%
6	1.782	209	215	220	rBV7	4198	5297	1.22%	0.131%
7	1.820	220	227	237	rVB4	10707	15120	3.49%	0.373%
8	2.126	312	322	336	rBV	111233	165257	38.15%	4.076%
9	3.923	869	881	906	rBV2	47403	147878	34.14%	3.648%
10	4.376	1004	1022	1041	rBV	78929	203804	47.05%	5.027%
11	5.074	1224	1239	1268	rBV4	171097	433123	100.00%	10.684%
12	5.640	1402	1415	1435	rBV	158879	326492	75.38%	8.054%
13	6.097	1542	1557	1581	rBV2	97932	211043	48.73%	5.206%
14	7.010	1831	1841	1859	rBV	49487	91662	21.16%	2.261%
15	7.338	1931	1943	1957	rBV	210174	357383	82.51%	8.815%
16	7.415	1958	1967	1977	rVB2	17355	31443	7.26%	0.776%
17	7.643	2027	2038	2056	rBV	32884	61849	14.28%	1.526%
18	8.109	2173	2183	2209	rBV	193283	359383	82.97%	8.865%
19	8.875	2409	2421	2439	rBV	243699	397874	91.86%	9.814%
20	9.035	2462	2471	2483	rVB	21645	33460	7.73%	0.825%
21	9.161	2503	2510	2523	rVB6	5190	9762	2.25%	0.241%
22	9.572	2630	2638	2645	rVB8	3267	5049	1.17%	0.125%
23	10.238	2833	2845	2860	rBV2	69210	112497	25.97%	2.775%
24	10.939	3053	3063	3070	rBV10	3095	4991	1.15%	0.123%
25	11.270	3153	3166	3181	rBV	248119	387365	89.44%	9.555%
26	11.563	3246	3257	3266	rBV	4704	8787	2.03%	0.217%
27	11.646	3268	3283	3304	rVV	225968	359723	83.05%	8.873%
28	12.370	3501	3508	3514	rBV8	2898	4422	1.02%	0.109%

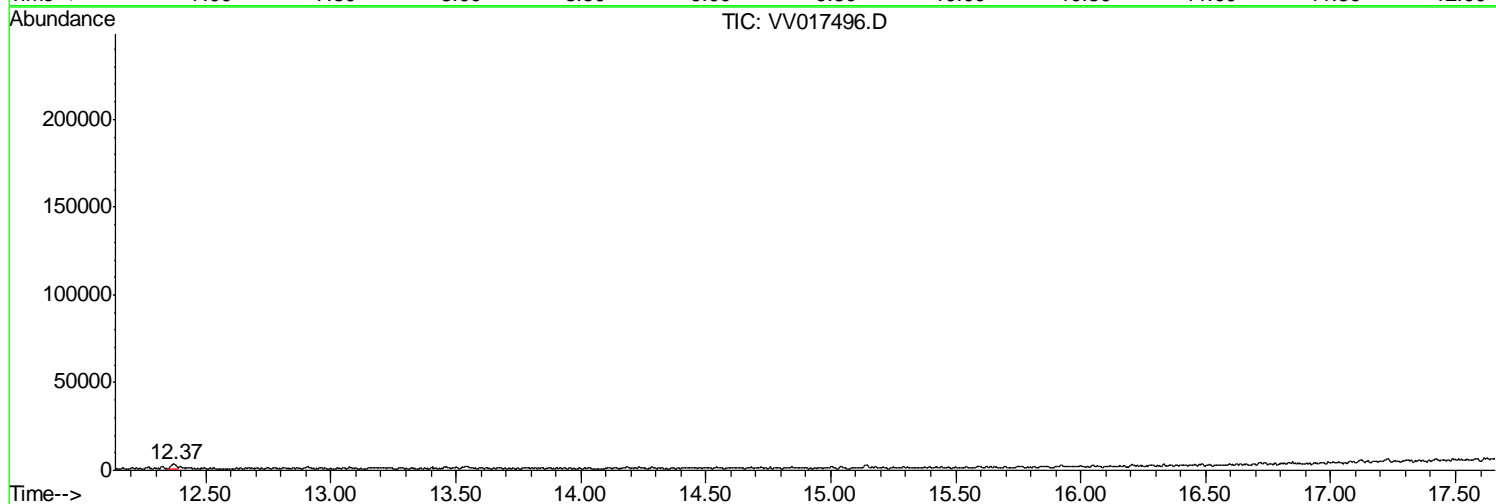
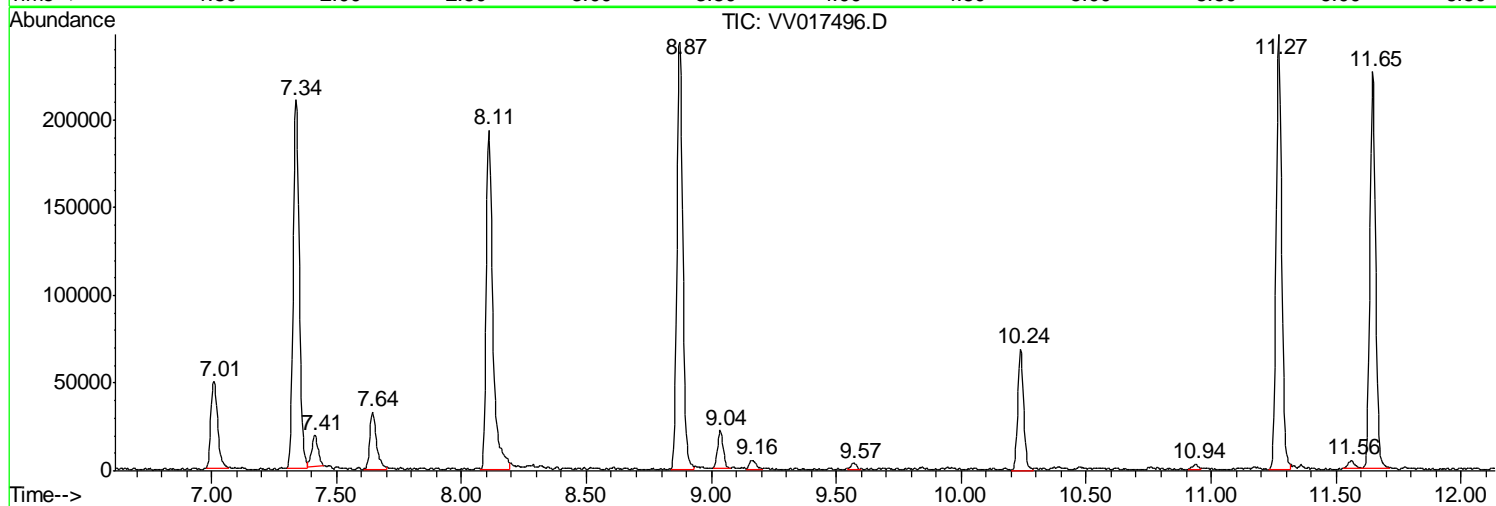
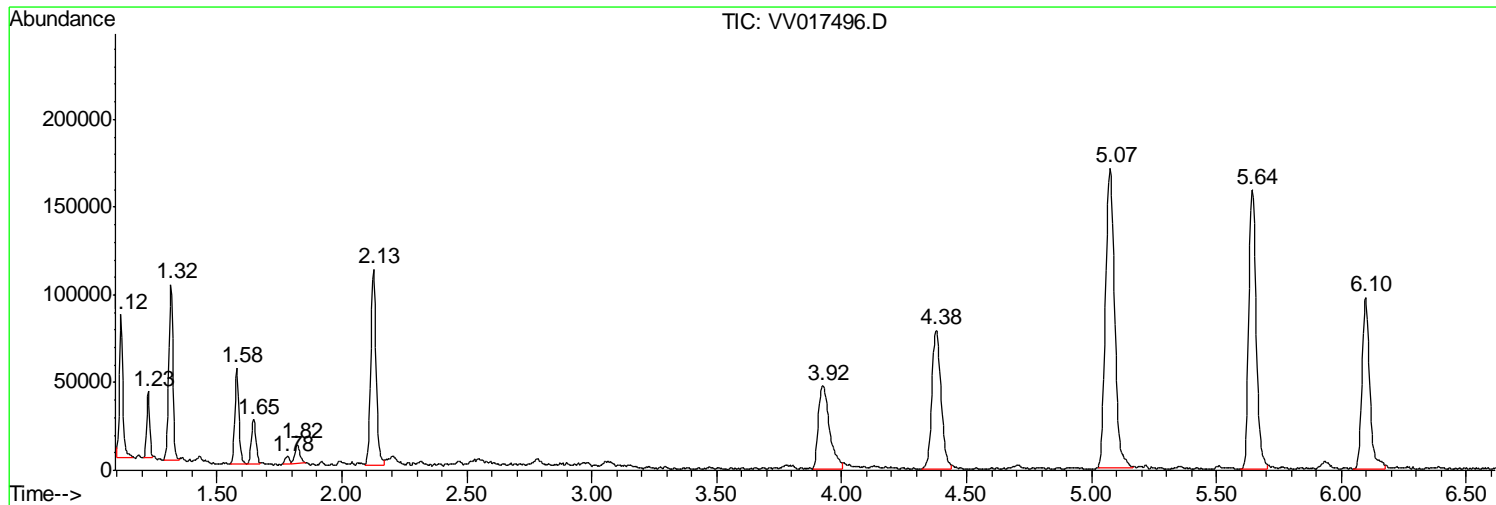
Sum of corrected areas: 4054037

Data Path : Z:\VOASRV\HPCHEM1\MSVOA V\DATA\VV071420\
Data File : VV017496.D
Acq On : 14 Jul 2020 20:26
Operator : SY/MD
Sample : L3281-14
Misc : 25.0mL/MSVOA V/WATER
ALS Vial : 28 Sample Multiplier: 1

Instrument :
MSVOA_V
ClientSampled :
GAXX4

Quant Method : Z:\VOASRV\HPCHEM1\MSVOA_V\METHOD\SOMVTR071420WMA.M
Quant Title : TRACE VOA SOM01.0

TIC Library : C:\DATABASE\NIST11.L
TIC Integration Parameters: LSCINT.P



Data Path : Z:\VOASRV\HPCHEM1\MSVOA V\DATA\VV071420\
 Data File : VV017496.D
 Acq On : 14 Jul 2020 20:26
 Operator : SY/MD
 Sample : L3281-14
 Misc : 25.0mL/MSVOA V/WATER
 ALS Vial : 28 Sample Multiplier: 1

Instrument :
 MSVOA_V
 ClientSampled :
 GAXX4

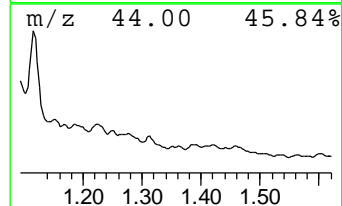
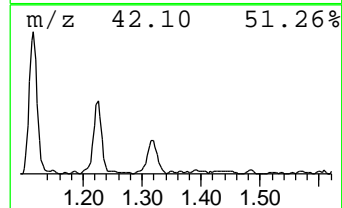
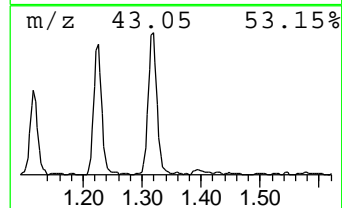
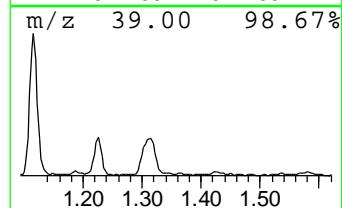
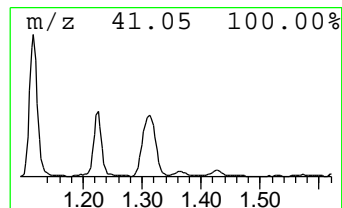
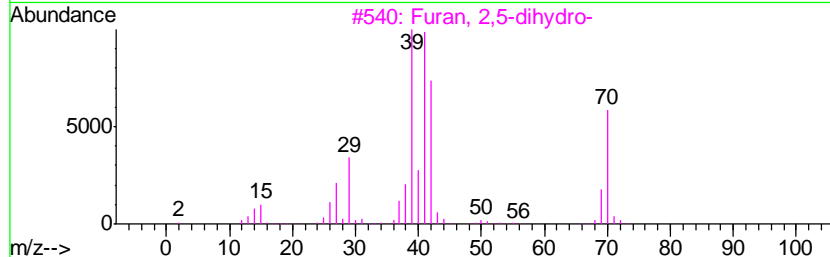
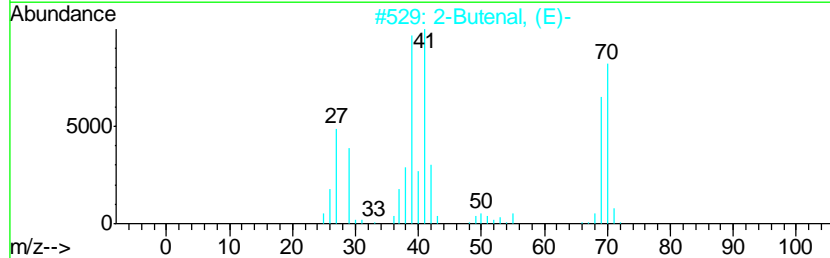
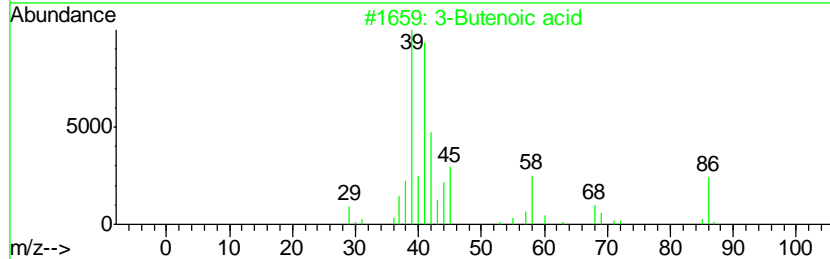
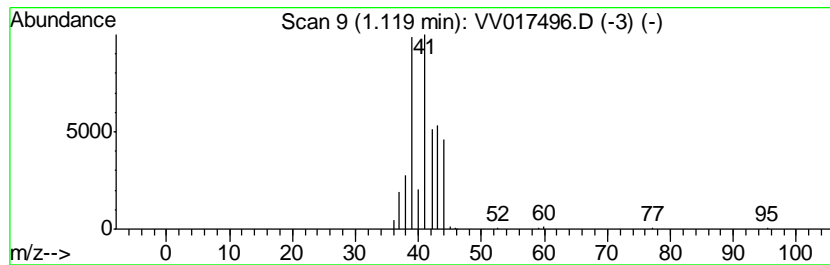
Quant Method : Z:\VOASRV\HPCHEM1\MSVOA_V\METHOD\SOMVTR071420WMA.M
 Quant Title : TRACE VOA SOM01.0

TIC Library : C:\DATABASE\NIST11.L
 TIC Integration Parameters: LSCINT.P

 Peak Number 1 3-Butenoic acid Concentration Rank 2

R.T.	EstConc	Area	Relative to ISTD	R.T.
1.12	1.18 ug/L	77362	1,4-Difluorobenzene	5.64

Hit#	of	Tentative ID	MW	MolForm	CAS#	Qual
1	5	3-Butenoic acid	86	C4H6O2	000625-38-7	78
2		2-Butenal, (E)-	70	C4H6O	000123-73-9	72
3		Furan, 2,5-dihydro-	70	C4H6O	001708-29-8	45
4		2-Butenal	70	C4H6O	004170-30-3	40
5		Dimethylketene	70	C4H6O	000598-26-5	40



Data Path : Z:\VOASRV\HPCHEM1\MSVOA V\DATA\VV071420\
 Data File : VV017496.D
 Acq On : 14 Jul 2020 20:26
 Operator : SY/MD
 Sample : L3281-14
 Misc : 25.0mL/MSVOA V/WATER
 ALS Vial : 28 Sample Multiplier: 1

Instrument :
 MSVOA_V
 ClientSampleID :
 GAXX4

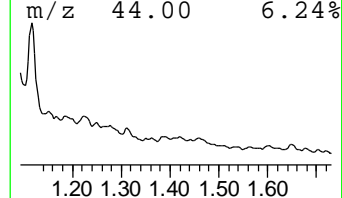
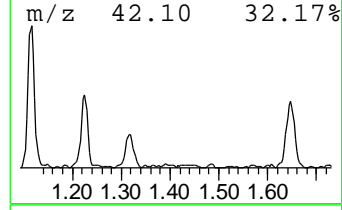
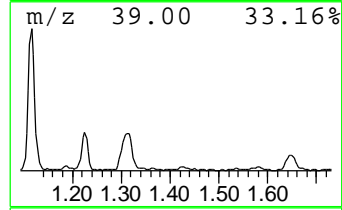
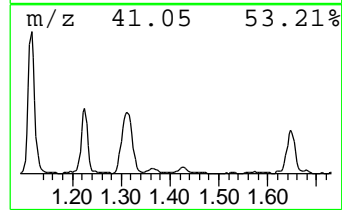
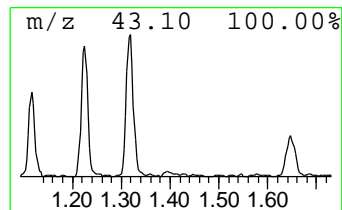
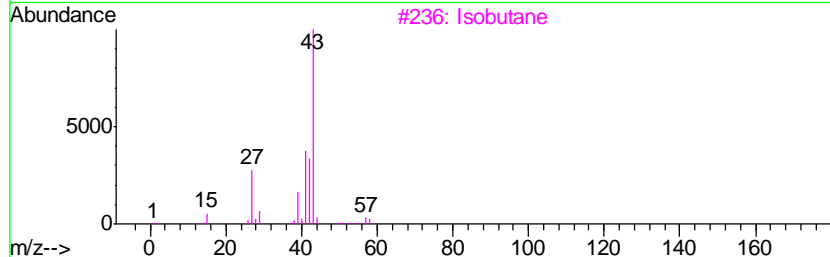
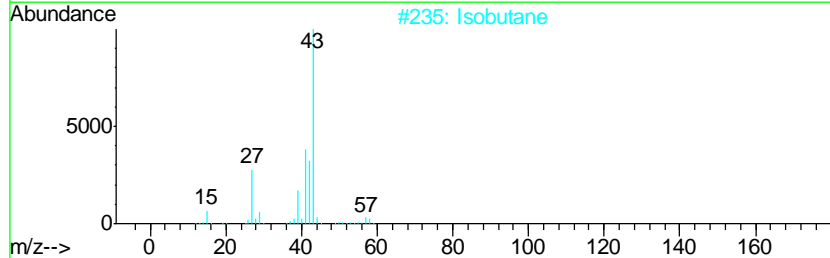
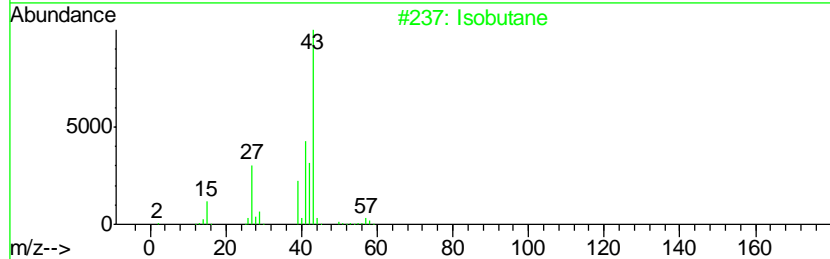
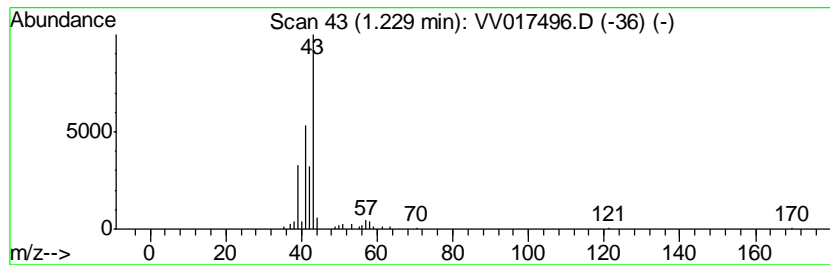
Quant Method : Z:\VOASRV\HPCHEM1\MSVOA_V\METHOD\SOMVTR071420WMA.M
 Quant Title : TRACE VOA SOM01.0

TIC Library : C:\DATABASE\NIST11.L
 TIC Integration Parameters: LSCINT.P

 Peak Number 2 (DEL) Alkane: Straight-Chai... Concentration Rank 3

R.T.	EstConc	Area	Relative to ISTD	R.T.
1.23	0.52 ug/L	33661	1,4-Difluorobenzene	5.64

Hit#	of	Tentative ID	MW	MolForm	CAS#	Qual
1	5	Isobutane	58	C4H10	000075-28-5	72
2		Isobutane	58	C4H10	000075-28-5	72
3		Isobutane	58	C4H10	000075-28-5	9
4		Isobutane	58	C4H10	000075-28-5	9
5		Butane	58	C4H10	000106-97-8	9



Data Path : Z:\VOASRV\HPCHEM1\MSVOA_V\DATA\VV071420\
Data File : VV017496.D
Acq On : 14 Jul 2020 20:26
Operator : SY/MD
Sample : L3281-14
Misc : 25.0mL/MSVOA_V/WATER
ALS Vial : 28 Sample Multiplier: 1

Instrument :
MSVOA_V
ClientSampleId :
GAXX4

Quant Method : Z:\VOASRV\HPCHEM1\MSVOA_V\METHOD\SOMVTR071420WMA.M
Quant Title : TRACE VOA SOM01.0

TIC Library : C:\DATABASE\NIST11.L
TIC Integration Parameters: LSCINT.P

TIC Top Hit name	RT	EstConc	Units	Response	--Internal Standard--			
					#	RT	Resp	Conc
3-Butenoic acid	1.12	1.2	ug/L	77362	1	5.64	326492	5.0
(DEL) Alkane: Str...	1.23	0.5	ug/L	33661	1	5.64	326492	5.0