

Data Path : Z:\VOASRV\HPCHEM1\MSVOA V\DATA\VV071520\
 Data File : VV017502.D
 Acq On : 15 Jul 2020 11:20
 Operator : SY/MD
 Sample : L3281-15
 Misc : 25.0mL/MSVOA V/WATER
 ALS Vial : 5 Sample Multiplier: 1

Instrument :
 MSVOA_V
 ClientSampleId :
 GAXX5

Quant Time: Jul 16 02:35:02 2020
 Quant Method : Z:\VOASRV\HPCHEM1\MSVOA_V\METHOD\SOMVTR071420WMA.M
 Quant Title : TRACE VOA SOM01.0
 QLast Update : Thu Jul 16 01:29:31 2020
 Response via : Initial Calibration

Internal Standards	R.T.	QIon	Response	Conc	Units	Dev(Min)
1) 1,4-Difluorobenzene	5.64	114	143851	5.00	ug/L	0.00
28) Chlorobenzene-d5	8.87	117	139522	5.00	ug/L	0.00
61) 1,4-Dichlorobenzene-d4	11.27	152	70080	5.00	ug/L	0.00

System Monitoring Compounds

4) Vinyl Chloride-d3	1.32	65	37605	4.49	ug/L	0.00
Spiked Amount	5.000	Range	40 - 130	Recovery	=	89.80%
7) Chloroethane-d5	1.58	69	31519	4.73	ug/L	0.00
Spiked Amount	5.000	Range	65 - 130	Recovery	=	94.60%
11) 1,1-Dichloroethene-d2	2.13	63	59279	3.24	ug/L	0.00
Spiked Amount	5.000	Range	60 - 125	Recovery	=	64.80%
20) 2-Butanone-d5	3.92	46	83515	48.64	ug/L	-0.03
Spiked Amount	50.000	Range	40 - 130	Recovery	=	97.28%
24) Chloroform-d	4.37	84	82271	4.38	ug/L	0.00
Spiked Amount	5.000	Range	70 - 125	Recovery	=	87.60%
26) 1,2-Dichloroethane-d4	5.06	65	48508	4.86	ug/L	0.00
Spiked Amount	5.000	Range	70 - 130	Recovery	=	97.20%
32) Benzene-d6	5.07	84	144925	4.49	ug/L	0.00
Spiked Amount	5.000	Range	70 - 125	Recovery	=	89.80%
36) 1,2-Dichloropropane-d6	6.09	67	41027	4.60	ug/L	0.00
Spiked Amount	5.000	Range	60 - 140	Recovery	=	92.00%
41) Toluene-d8	7.33	98	134062	4.26	ug/L	0.00
Spiked Amount	5.000	Range	70 - 130	Recovery	=	85.20%
45) trans-1,3-Dichloropropene-	7.64	79	18570	4.28	ug/L	0.00
Spiked Amount	5.000	Range	55 - 130	Recovery	=	85.60%
48) 2-Hexanone-d5	8.11	63	58747	45.35	ug/L	0.00
Spiked Amount	50.000	Range	45 - 130	Recovery	=	90.70%
59) 1,1,2,2-Tetrachloroethane-	10.24	84	27875	4.40	ug/L	0.00
Spiked Amount	5.000	Range	65 - 120	Recovery	=	88.00%
65) 1,2-Dichlorobenzene-d4	11.65	152	58637	4.90	ug/L	0.00
Spiked Amount	5.000	Range	80 - 120	Recovery	=	98.00%

Target Compounds

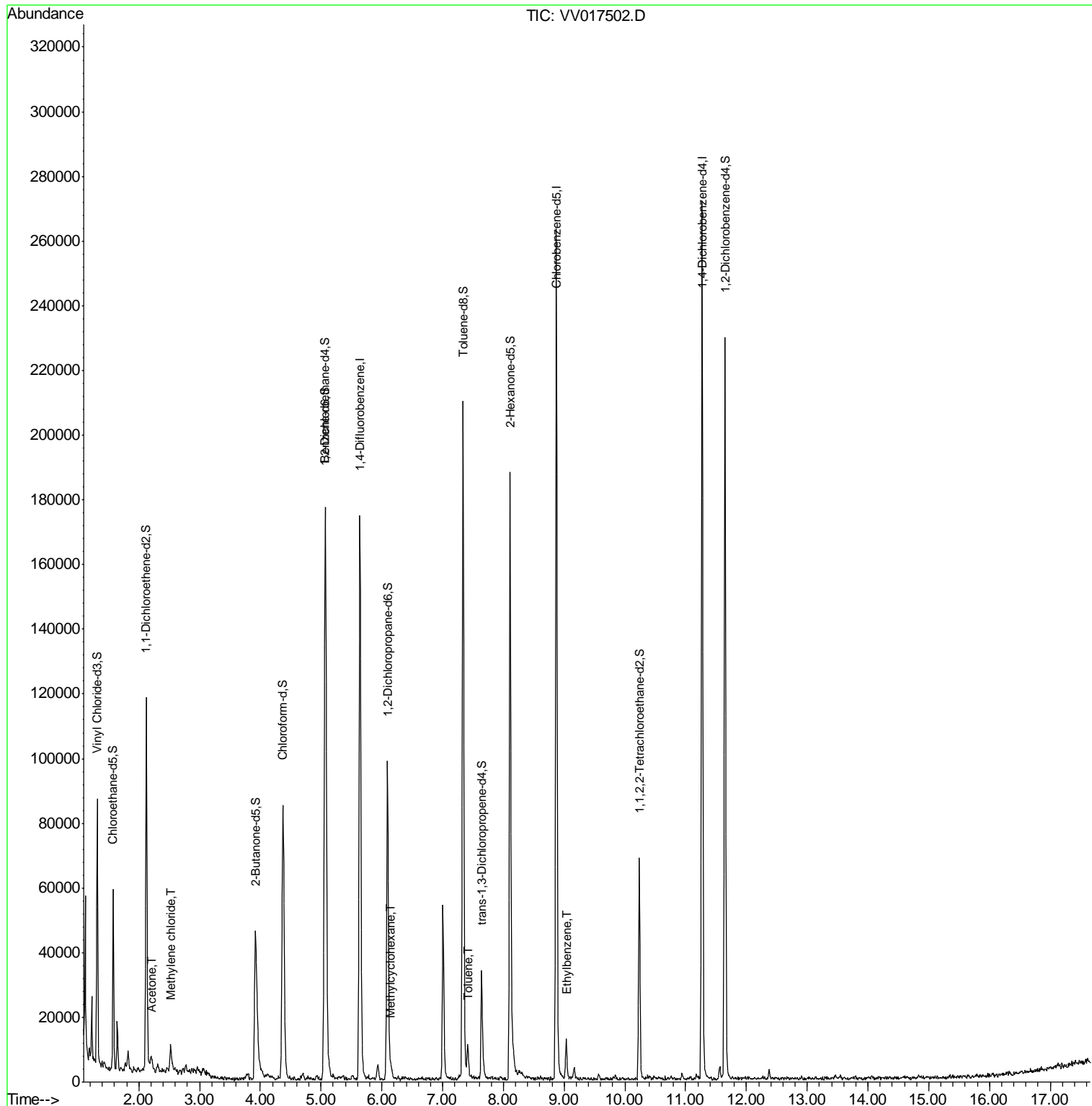
Target Compounds	R.T.	QIon	Response	Conc	Units	Ovalue
13) Acetone	2.21	43	8015	6.430	ug/L	92
16) Methylene chloride	2.52	84	2614	0.251	ug/L	91
35) Methylcyclohexane	6.15	83	1385	0.083	ug/L #	51
42) Toluene	7.41	91	7314	0.178	ug/L	100
54) Ethylbenzene	9.04	91	7438	0.159	ug/L	92

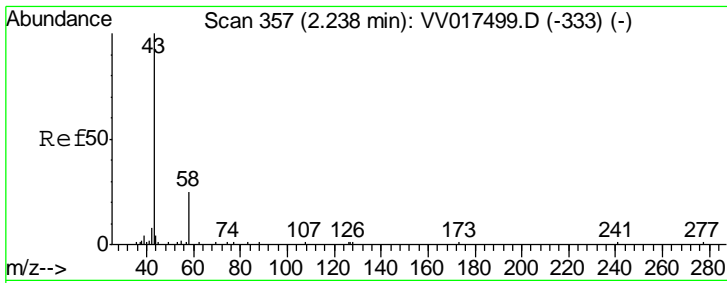
(#) = qualifier out of range (m) = manual integration (+) = signals summed

Data Path : Z:\VOASRV\HPCHEM1\MSVOA V\DATA\VV071520\
 Data File : VV017502.D
 Acq On : 15 Jul 2020 11:20
 Operator : SY/MD
 Sample : L3281-15
 Misc : 25.0mL/MSVOA V/WATER
 ALS Vial : 5 Sample Multiplier: 1

Instrument :
 MSVOA_V
 ClientSampled :
 GAXX5

Quant Time: Jul 16 02:35:02 2020
 Quant Method : Z:\VOASRV\HPCHEM1\MSVOA_V\METHOD\SOMVTR071420WMA.M
 Quant Title : TRACE VOA SOM01.0
 QLast Update : Thu Jul 16 01:29:31 2020
 Response via : Initial Calibration

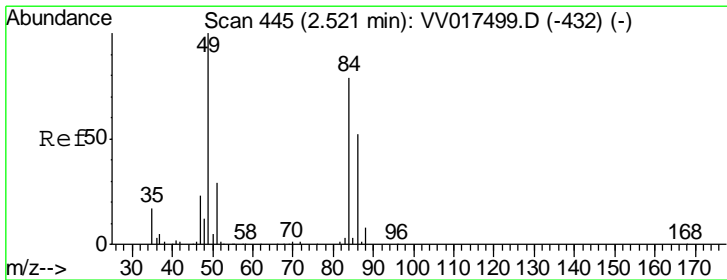
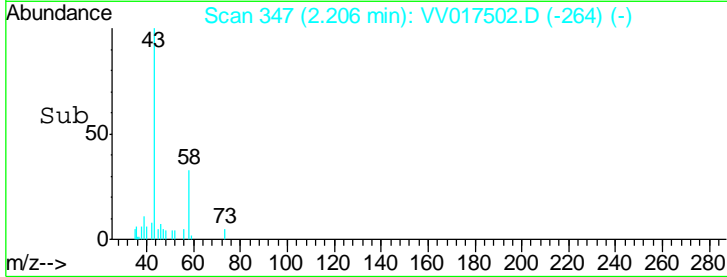
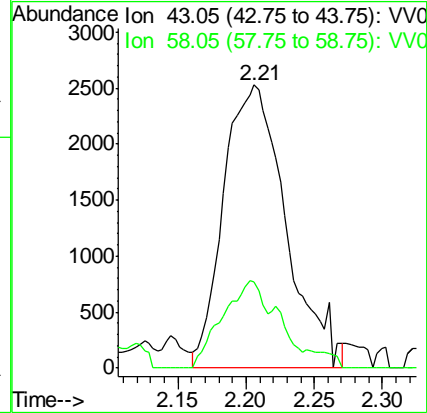
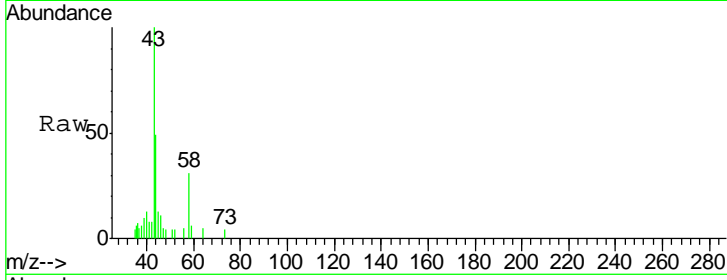




#13
 Acetone
 Concen: 6.430 ug/L
 RT: 2.21 min Scan# 347
 Delta R.T. -0.03 min
 Lab File: VV017502.D
 Acq: 15 Jul 2020 11:20

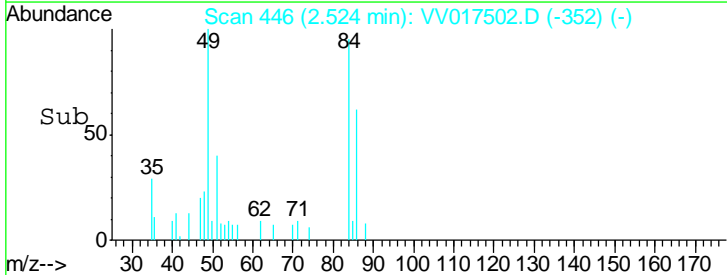
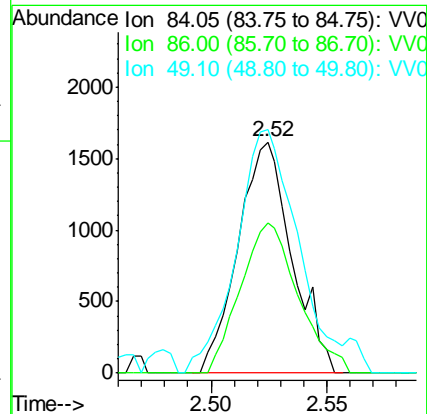
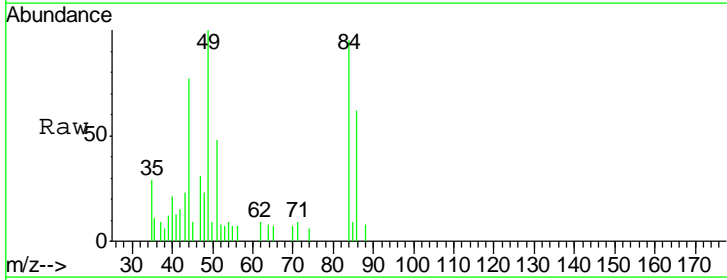
Instrument :
 MSVOA_V
 ClientSampled :
 GAXX5

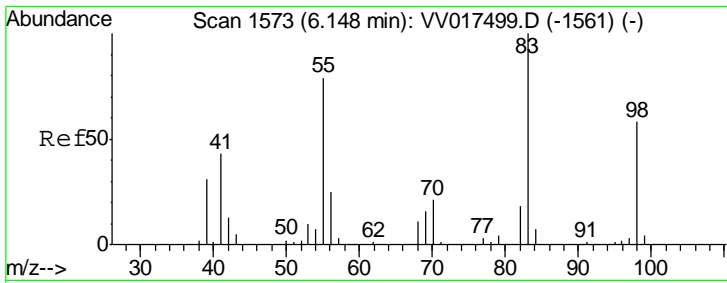
Tgt Ion	Resp	Lower	Upper
43	100		
58	20.4	0.0	33.6



#16
 Methylene chloride
 Concen: 0.251 ug/L
 RT: 2.52 min Scan# 446
 Delta R.T. 0.00 min
 Lab File: VV017502.D
 Acq: 15 Jul 2020 11:20

Tgt Ion	Resp	Lower	Upper
84	100		
86	64.9	45.5	84.5
49	105.3	84.6	157.0

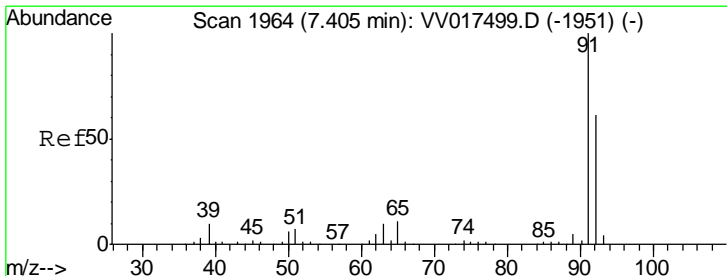
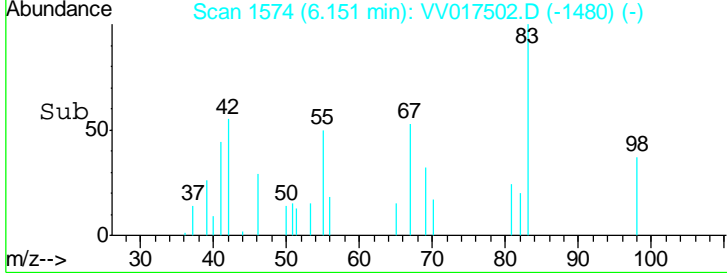
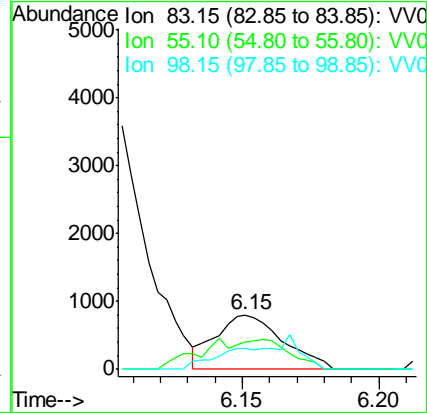
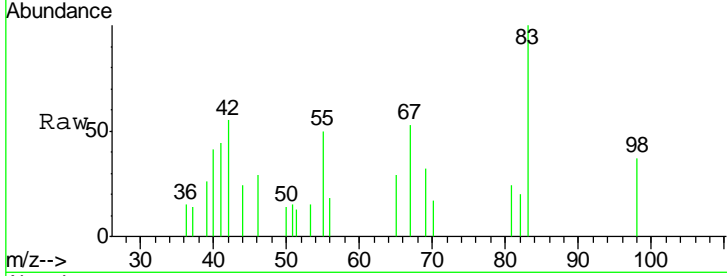




#35
 Methylcyclohexane
 Concen: 0.083 ug/L
 RT: 6.15 min Scan# 1574
 Delta R.T. 0.00 min
 Lab File: VV017502.D
 Acq: 15 Jul 2020 11:20

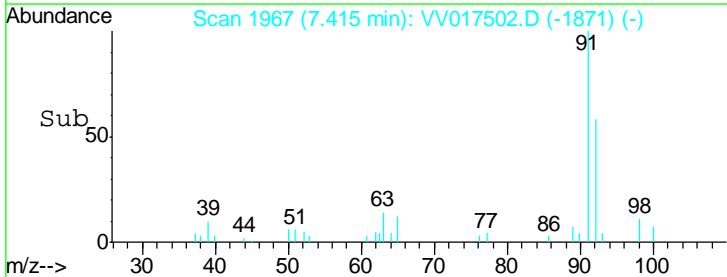
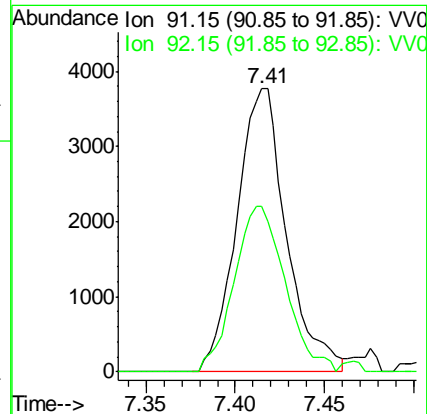
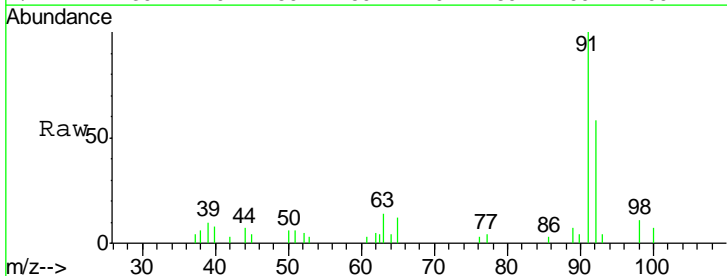
Instrument :
 MSVOA_V
 ClientSampled :
 GAXX5

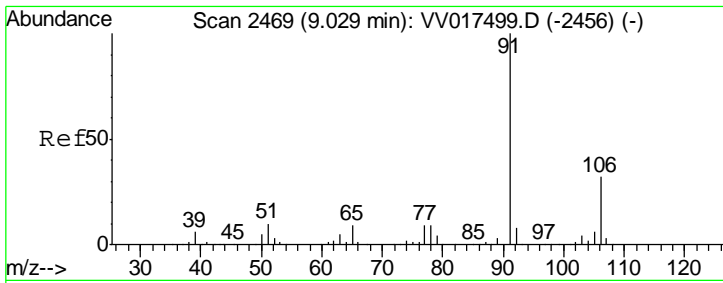
Tgt Ion	Resp	Lower	Upper
83	1385		
55	28.4	62.0	93.0#
98	24.8	41.4	62.2#



#42
 Toluene
 Concen: 0.178 ug/L
 RT: 7.41 min Scan# 1967
 Delta R.T. 0.01 min
 Lab File: VV017502.D
 Acq: 15 Jul 2020 11:20

Tgt Ion	Resp	Lower	Upper
91	7314		
92	58.3	40.7	75.5





#54
 Ethylbenzene
 Concen: 0.159 ug/L
 RT: 9.04 min Scan# 2471
 Delta R.T. 0.01 min
 Lab File: VV017502.D
 Acq: 15 Jul 2020 11:20

Instrument :
 MSVOA_V
ClientSampled :
 GAXX5

Tot Ion	Resp	Lower	Upper
91	100		
106	26.9	21.9	40.7

