

Data Path : Z:\VOASRV\HPCHEM1\MSVOA_V\DATA\VV071718\
 Data File : VV006625.D
 Acq On : 17 Jul 2018 19:05
 Operator : SY/MD
 Sample : J3983-22
 Misc : 25 mL/MSVOA_V/WATER
 ALS Vial : 1 Sample Multiplier: 1

Instrument :
 MSVOA_V
 ClientSampleID :
 DB1A3

Quant Time: Jul 18 03:07:06 2018
 Quant Method : Z:\VOASRV\HPCHEM1\MSVOA_V\METHOD\SOMVTR071718WMA.M
 Quant Title : TRACE VOA SOM01.0
 QLast Update : Tue Jul 17 15:32:48 2018
 Response via : Initial Calibration

Internal Standards	R.T.	QIon	Response	Conc	Units	Dev(Min)
1) 1,4-Difluorobenzene	5.67	114	252104	5.00	ug/L	0.00
28) Chlorobenzene-d5	8.90	117	237691	5.00	ug/L	0.00
60) 1,4-Dichlorobenzene-d4	11.30	152	107224	5.00	ug/L	0.00

System Monitoring Compounds

4) Vinyl Chloride-d3	1.32	65	104970	4.28	ug/L	0.00
Spiked Amount	5.000	Range	40 - 130	Recovery	=	85.60%
7) Chloroethane-d5	1.57	69	76760	4.31	ug/L	0.00
Spiked Amount	5.000	Range	65 - 130	Recovery	=	86.20%
11) 1,1-Dichloroethene-d2	2.13	63	136674	3.30	ug/L	0.00
Spiked Amount	5.000	Range	60 - 125	Recovery	=	66.00%
20) 2-Butanone-d5	3.95	46	242271	71.78	ug/L	0.00
Spiked Amount	50.000	Range	40 - 130	Recovery	=	143.56%#
24) Chloroform-d	4.41	84	170037	4.40	ug/L	0.00
Spiked Amount	5.000	Range	70 - 125	Recovery	=	88.00%
26) 1,2-Dichloroethane-d4	5.09	65	83521	4.42	ug/L	0.00
Spiked Amount	5.000	Range	70 - 130	Recovery	=	88.40%
32) Benzene-d6	5.10	84	355995	4.34	ug/L	0.00
Spiked Amount	5.000	Range	70 - 125	Recovery	=	86.80%
36) 1,2-Dichloropropane-d6	6.12	67	111608	4.34	ug/L	0.00
Spiked Amount	5.000	Range	60 - 140	Recovery	=	86.80%
41) Toluene-d8	7.36	98	312540	4.17	ug/L	0.00
Spiked Amount	5.000	Range	70 - 130	Recovery	=	83.40%
43) trans-1,3-Dichloropropene-	7.67	79	32652	3.68	ug/L	0.00
Spiked Amount	5.000	Range	55 - 130	Recovery	=	73.60%
46) 2-Hexanone-d5	8.14	63	220011	46.28	ug/L	0.00
Spiked Amount	50.000	Range	45 - 130	Recovery	=	92.56%
57) 1,1,2,2-Tetrachloroethane-	10.27	84	87184	4.35	ug/L	0.00
Spiked Amount	5.000	Range	65 - 120	Recovery	=	87.00%
64) 1,2-Dichlorobenzene-d4	11.68	152	116927	4.59	ug/L	0.00
Spiked Amount	5.000	Range	80 - 120	Recovery	=	91.80%

Target Compounds

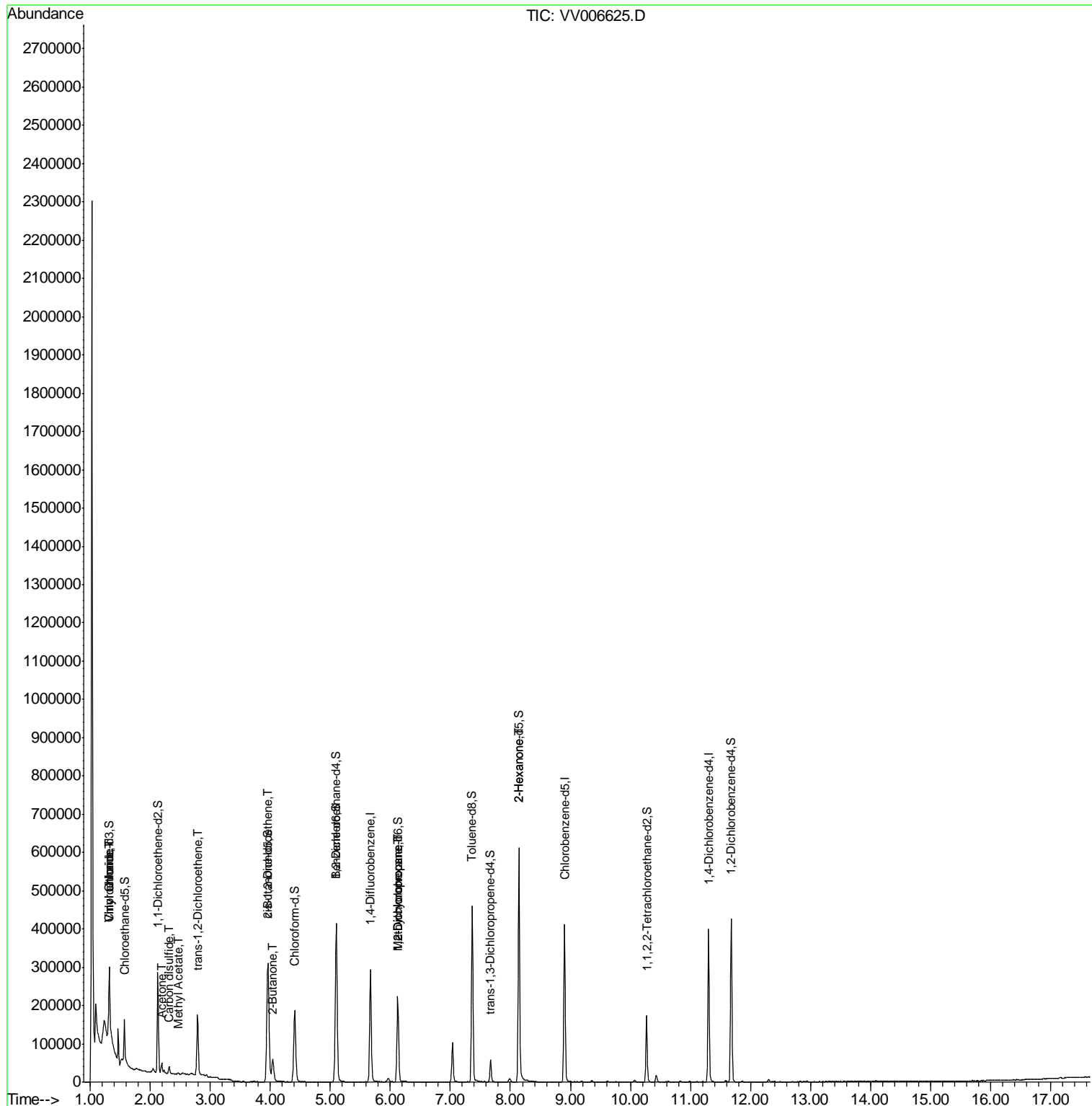
Target Compounds	R.T.	QIon	Response	Conc	Units	Qvalue
5) Vinyl chloride	1.32	62	27181	0.897	ug/L #	1
8) Chloroethane	1.32	64	200346	11.775	ug/L #	58
13) Acetone	2.19	43	23748	7.049	ug/L	99
14) Carbon disulfide	2.32	76	16862	0.271	ug/L	100
15) Methyl Acetate	2.46	43	3579	0.344	ug/L	96
18) trans-1,2-Dichloroethene	2.79	96	57807	2.604	ug/L	99
21) 2-Butanone	4.04	43	84430	14.308	ug/L	97
22) cis-1,2-Dichloroethene	3.96	96	95632	4.107	ug/L	99
35) Methylcyclohexane	6.12	83	26641	0.764	ug/L #	18
37) 1,2-Dichloropropane	6.12	63	11261	0.497	ug/L #	86
48) 2-Hexanone	8.14	43	22199	2.383	ug/L #	65

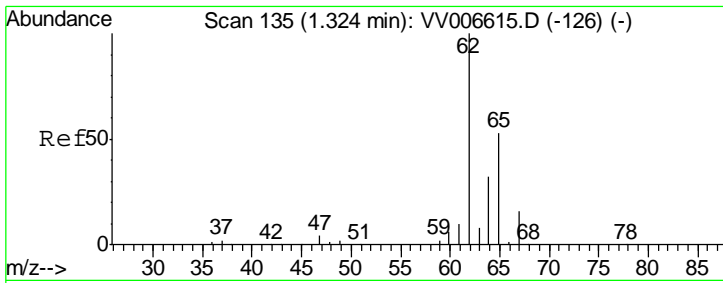
(#) = qualifier out of range (m) = manual integration (+) = signals summed

Data Path : Z:\VOASRV\HPCHEM1\MSVOA_V\DATA\VV071718\
 Data File : VV006625.D
 Acq On : 17 Jul 2018 19:05
 Operator : SY/MD
 Sample : J3983-22
 Misc : 25 mL/MSVOA_V/WATER
 ALS Vial : 1 Sample Multiplier: 1

Instrument :
 MSVOA_V
 ClientSampleId :
 DB1A3

Quant Time: Jul 18 03:07:06 2018
 Quant Method : Z:\VOASRV\HPCHEM1\MSVOA_V\METHOD\SOMVTR071718WMA.M
 Quant Title : TRACE VOA SOM01.0
 QLast Update : Tue Jul 17 15:32:48 2018
 Response via : Initial Calibration

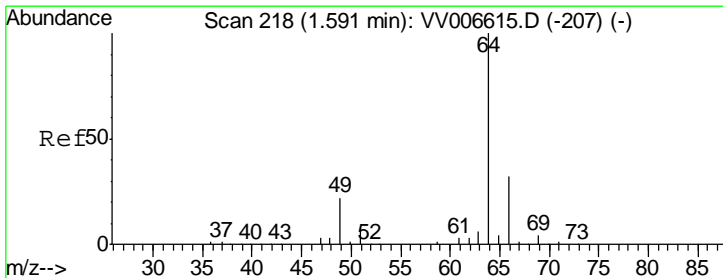
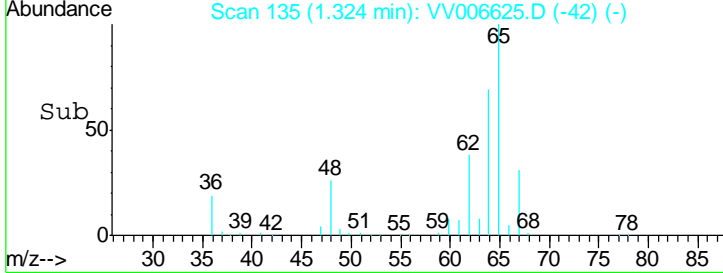
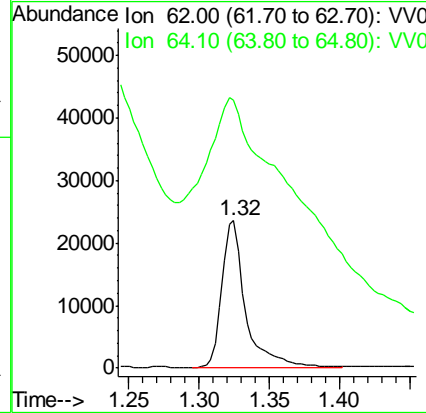
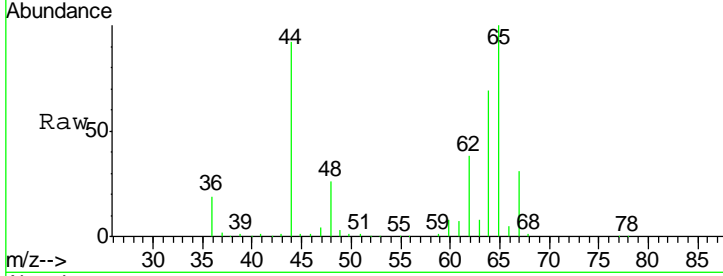




#5
 Vinyl chloride
 Concen: 0.897 ug/L
 RT: 1.32 min Scan# 135
 Delta R.T. 0.00 min
 Lab File: VV006625.D
 Acq: 17 Jul 2018 19:05

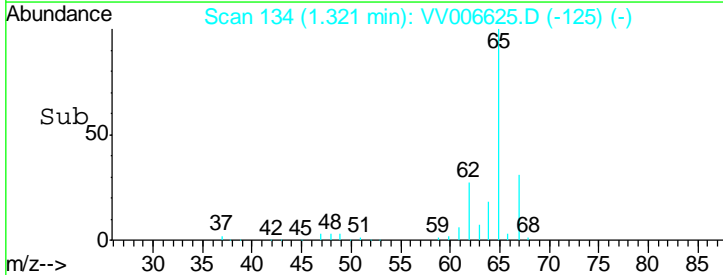
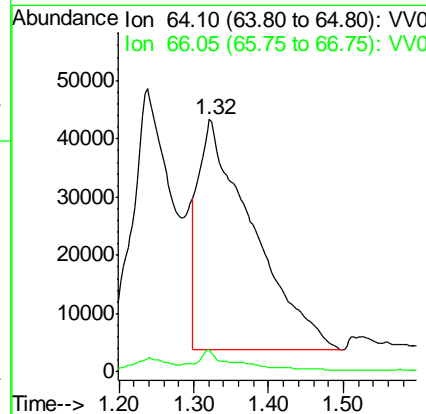
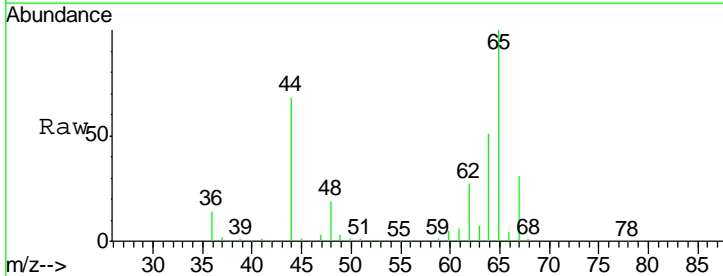
Instrument :
 MSVOA_V
ClientSampled :
 DB1A3

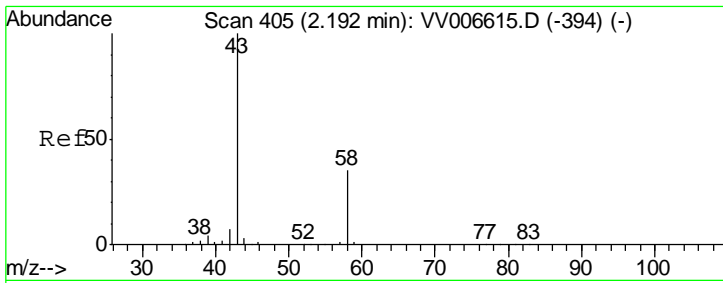
Tgt Ion: 62 Resp: 27181
 Ion Ratio Lower Upper
 62 100
 64 182.0 22.6 42.0#



#8
 Chloroethane
 Concen: 11.775 ug/L
 RT: 1.32 min Scan# 134
 Delta R.T. -0.27 min
 Lab File: VV006625.D
 Acq: 17 Jul 2018 19:05

Tgt Ion: 64 Resp: 200346
 Ion Ratio Lower Upper
 64 100
 66 8.7 22.5 41.9#

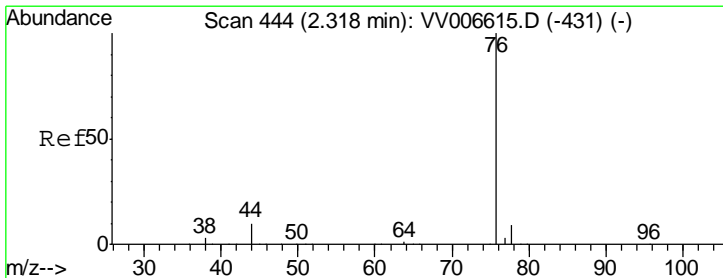
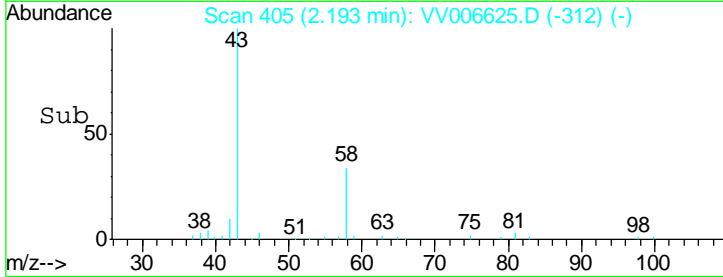
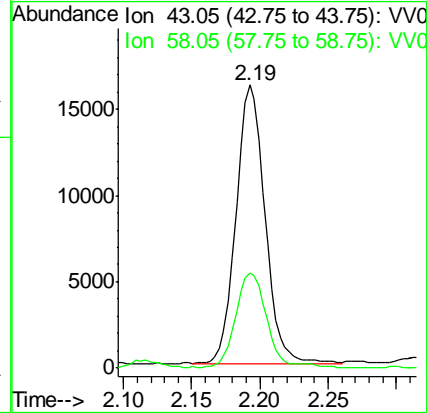
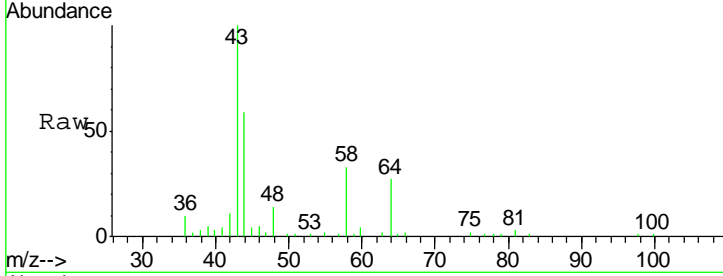




#13
 Acetone
 Concen: 7.049 ug/L
 RT: 2.19 min Scan# 405
 Delta R.T. 0.00 min
 Lab File: VV006625.D
 Acq: 17 Jul 2018 19:05

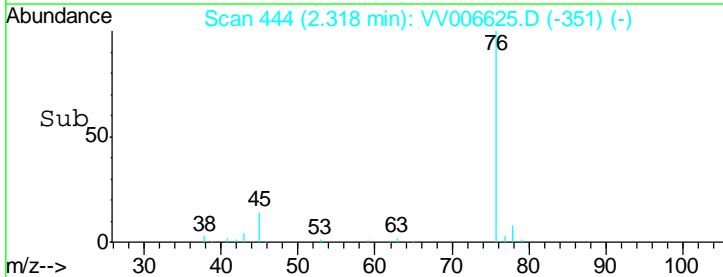
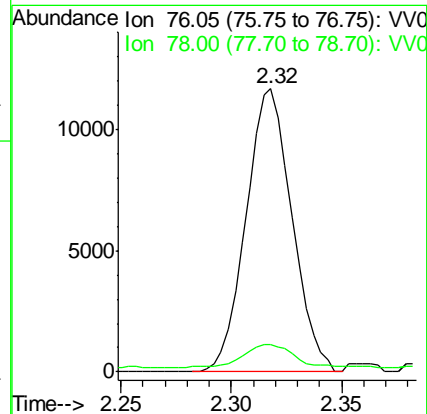
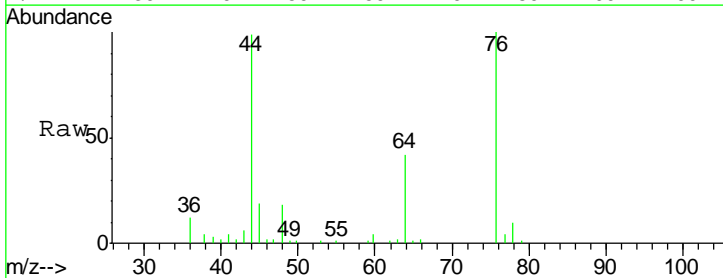
Instrument :
 MSVOA_V
 ClientSampled :
 DB1A3

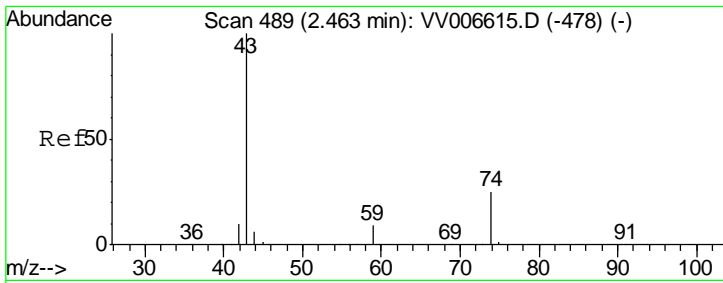
Tgt Ion: 43 Resp: 23748
 Ion Ratio Lower Upper
 43 100
 58 36.3 0.0 70.8



#14
 Carbon disulfide
 Concen: 0.271 ug/L
 RT: 2.32 min Scan# 444
 Delta R.T. 0.00 min
 Lab File: VV006625.D
 Acq: 17 Jul 2018 19:05

Tgt Ion: 76 Resp: 16862
 Ion Ratio Lower Upper
 76 100
 78 9.5 7.5 11.3

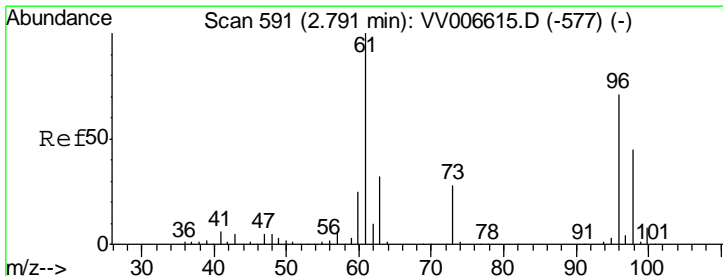
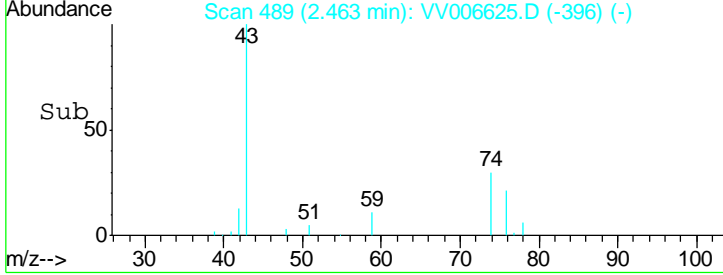
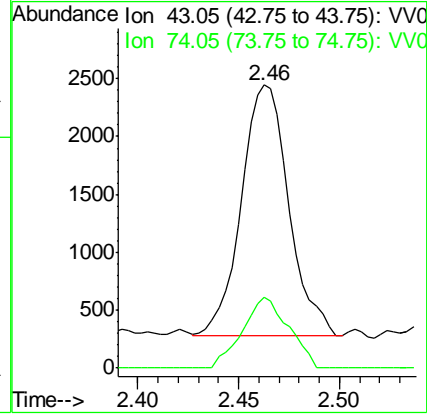
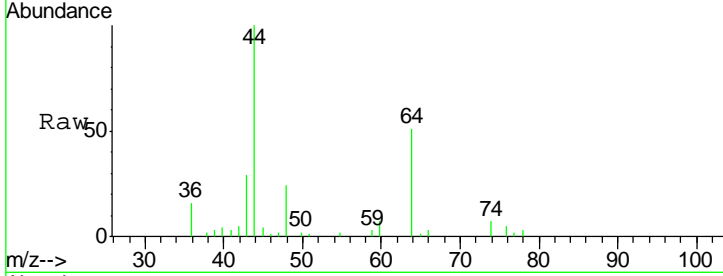




#15
 Methyl Acetate
 Concen: 0.344 ug/L
 RT: 2.46 min Scan# 489
 Delta R.T. 0.00 min
 Lab File: VV006625.D
 Acq: 17 Jul 2018 19:05

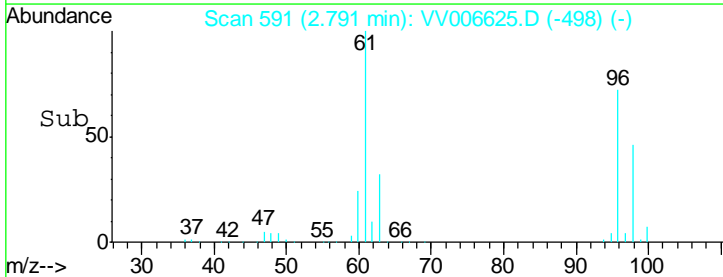
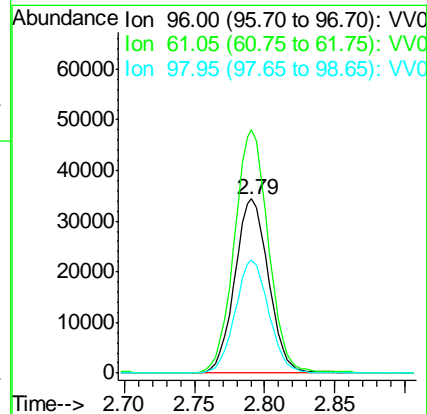
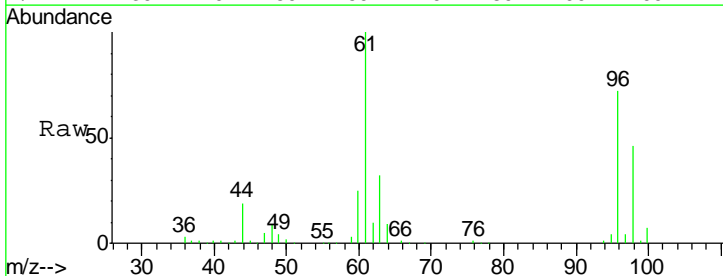
Instrument :
 MSVOA_V
 ClientSampleID :
 DB1A3

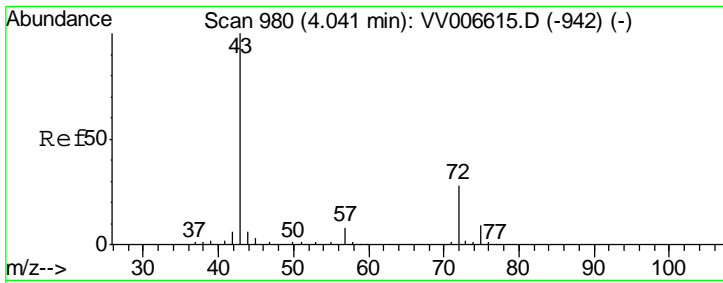
Tgt Ion: 43 Resp: 3579
 Ion Ratio Lower Upper
 43 100
 74 27.4 20.2 30.4



#18
 trans-1,2-Dichloroethene
 Concen: 2.604 ug/L
 RT: 2.79 min Scan# 591
 Delta R.T. 0.00 min
 Lab File: VV006625.D
 Acq: 17 Jul 2018 19:05

Tgt Ion: 96 Resp: 57807
 Ion Ratio Lower Upper
 96 100
 61 139.8 98.1 182.1
 98 65.0 44.4 82.4

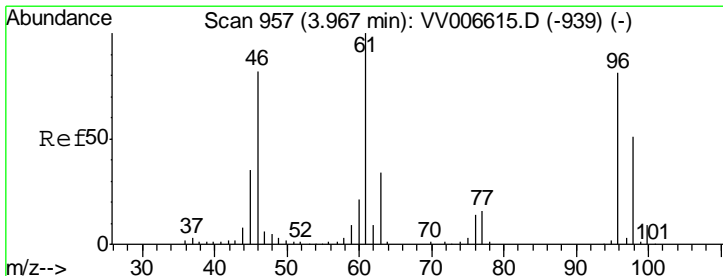
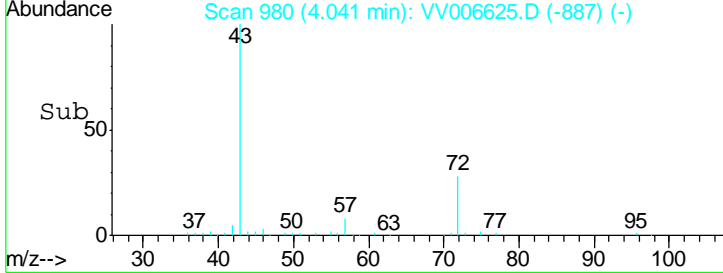
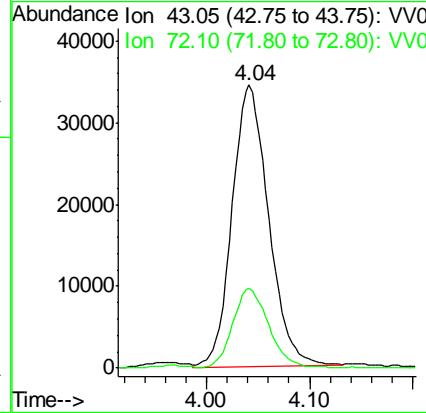
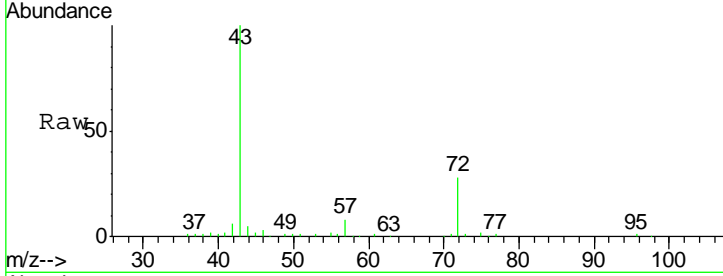




#21
 2-Butanone
 Concen: 14.308 ug/L
 RT: 4.04 min Scan# 980
 Delta R.T. 0.00 min
 Lab File: VV006625.D
 Acq: 17 Jul 2018 19:05

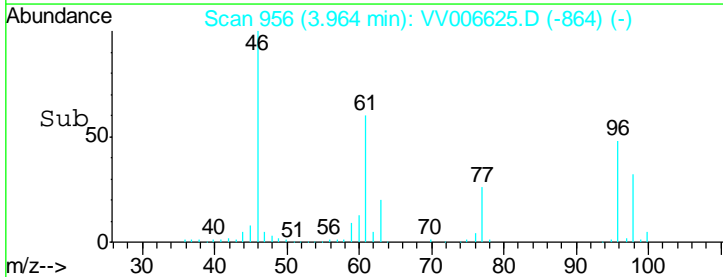
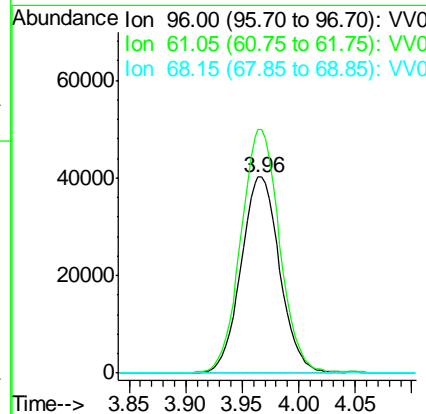
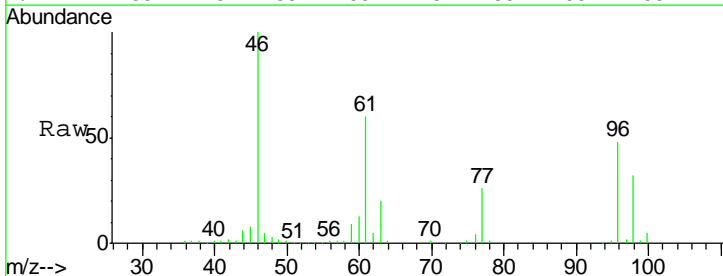
Instrument :
 MSVOA_V
 ClientSampled :
 DB1A3

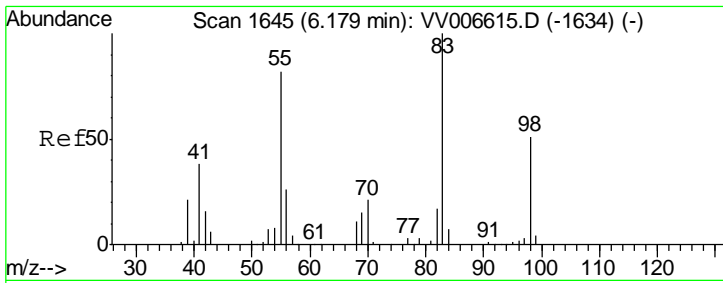
Tgt Ion: 43 Resp: 84430
 Ion Ratio Lower Upper
 43 100
 72 28.4 13.4 40.1



#22
 cis-1,2-Dichloroethene
 Concen: 4.107 ug/L
 RT: 3.96 min Scan# 956
 Delta R.T. -0.00 min
 Lab File: VV006625.D
 Acq: 17 Jul 2018 19:05

Tgt Ion: 96 Resp: 95632
 Ion Ratio Lower Upper
 96 100
 61 124.2 86.2 160.2
 68 0.0 0.0 0.0

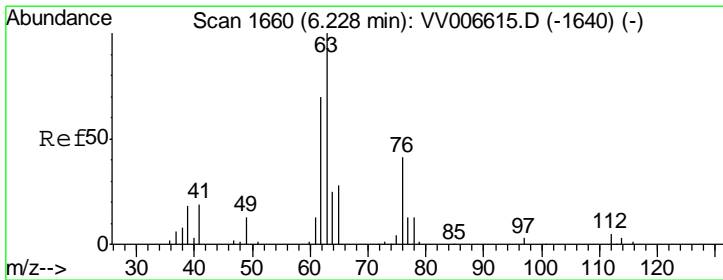
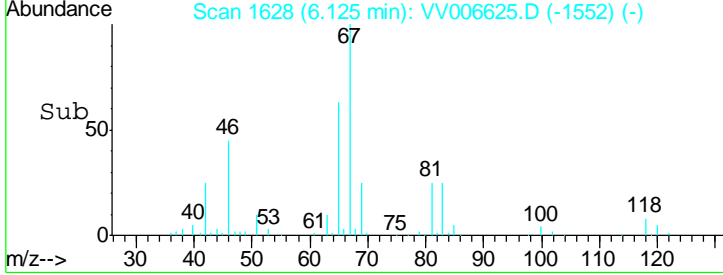
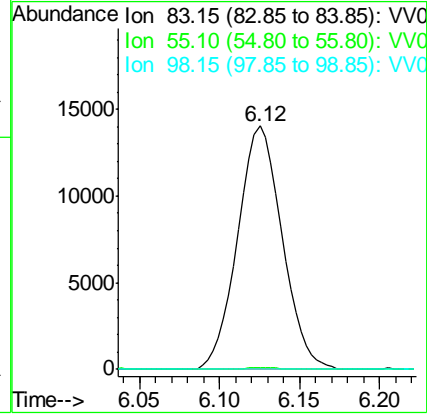
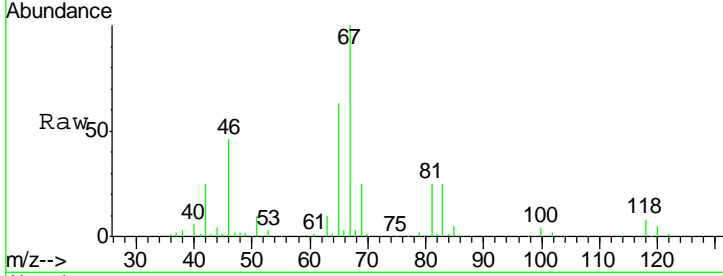




#35
 Methylcyclohexane
 Concen: 0.764 ug/L
 RT: 6.12 min Scan# 1628
 Delta R.T. -0.05 min
 Lab File: VV006625.D
 Acq: 17 Jul 2018 19:05

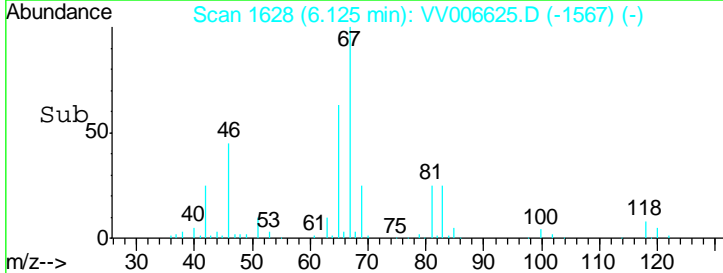
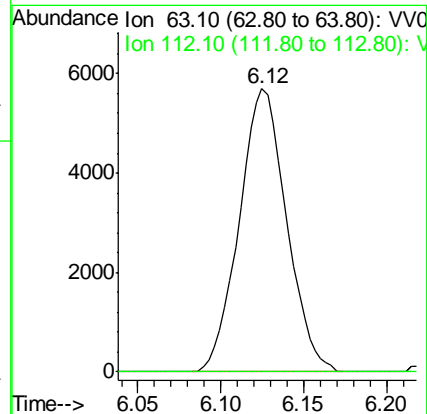
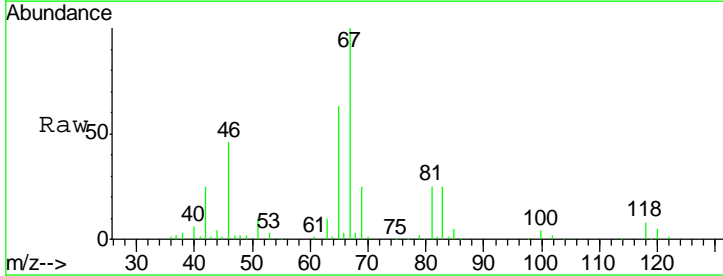
Instrument :
 MSVOA_V
 ClientSampled :
 DB1A3

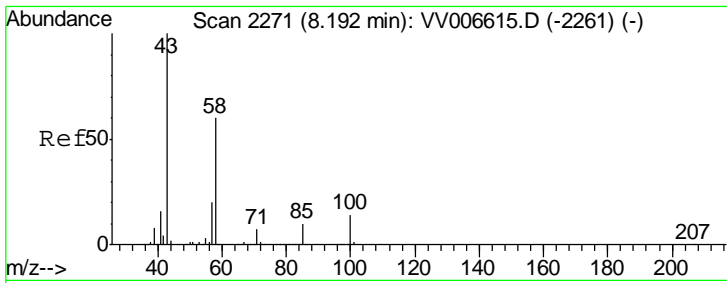
Tgt Ion	Resp	Lower	Upper
83	100		
55	0.5	60.7	91.1#
98	0.0	39.1	58.7#



#37
 1,2-Dichloropropane
 Concen: 0.497 ug/L
 RT: 6.12 min Scan# 1628
 Delta R.T. -0.10 min
 Lab File: VV006625.D
 Acq: 17 Jul 2018 19:05

Tgt Ion	Resp	Lower	Upper
63	100		
112	0.0	3.7	5.5#

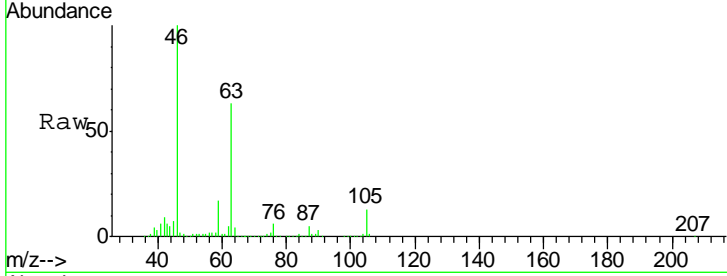




#48
 2-Hexanone
 Concen: 2.383 ug/L
 RT: 8.14 min Scan# 2255
 Delta R.T. -0.05 min
 Lab File: VV006625.D
 Acq: 17 Jul 2018 19:05

Instrument : MSVOA_V
 ClientSampled : DB1A3

Tgt Ion	Resp	Lower	Upper
43	100		
58	29.8	48.2	72.4#
57	31.5	16.2	24.4#
100	1.4	11.0	16.4#



Abundance Ion 43.05 (42.75 to 43.75): VV0
 Ion 58.05 (57.75 to 58.75): VV0
 Ion 57.20 (56.90 to 57.90): VV0
 Ion 100.15 (99.85 to 100.85): VV0

