

Data File : VV011934.D
 Acq On : 18 Jul 2019 15:27
 Operator : SY/MD
 Sample : K3823-17
 Misc : 25ML/MSVOA_V/WATER
 ALS Vial : 5 Sample Multiplier: 1

Instrument :
 MSVOA_V
 ClientSampleId :
 A52W1

Quant Time: Jul 19 05:46:46 2019
 Quant Method : Z:\VOASRV\HPCHEM1\MSVOA_V\METHOD\SOMVTR071719WMA.M
 Quant Title : TRACE VOA SOM01.0
 QLast Update : Fri Jul 19 05:34:55 2019
 Response via : Initial Calibration

Internal Standards	R.T.	QIon	Response	Conc	Units	Dev(Min)
1) 1,4-Difluorobenzene	5.66	114	192096	5.00	ug/L	0.00
28) Chlorobenzene-d5	8.89	117	184862	5.00	ug/L	0.00
60) 1,4-Dichlorobenzene-d4	11.29	152	87577	5.00	ug/L	0.00

System Monitoring Compounds

4) Vinyl Chloride-d3	1.32	65	56733	4.02	ug/L	0.00
Spiked Amount	5.000	Range	40 - 130	Recovery	=	80.40%
7) Chloroethane-d5	1.58	69	49661	4.25	ug/L	0.00
Spiked Amount	5.000	Range	65 - 130	Recovery	=	85.00%
11) 1,1-Dichloroethene-d2	2.13	63	54574	2.36	ug/L	0.00
Spiked Amount	5.000	Range	60 - 125	Recovery	=	47.20%#
20) 2-Butanone-d5	3.94	46	137942	38.71	ug/L	-0.01
Spiked Amount	50.000	Range	40 - 130	Recovery	=	77.42%
24) Chloroform-d	4.40	84	104380	3.69	ug/L	0.00
Spiked Amount	5.000	Range	70 - 125	Recovery	=	73.80%
26) 1,2-Dichloroethane-d4	5.08	65	57750	3.98	ug/L	0.00
Spiked Amount	5.000	Range	70 - 130	Recovery	=	79.60%
32) Benzene-d6	5.10	84	208110	3.87	ug/L	0.00
Spiked Amount	5.000	Range	70 - 125	Recovery	=	77.40%
36) 1,2-Dichloropropane-d6	6.12	67	63843	3.87	ug/L	0.00
Spiked Amount	5.000	Range	60 - 140	Recovery	=	77.40%
41) Toluene-d8	7.36	98	181708	3.70	ug/L	0.00
Spiked Amount	5.000	Range	70 - 130	Recovery	=	74.00%
43) trans-1,3-Dichloropropene-	7.66	79	22446	3.68	ug/L	0.00
Spiked Amount	5.000	Range	55 - 130	Recovery	=	73.60%
46) 2-Hexanone-d5	8.13	63	93673	38.16	ug/L	0.00
Spiked Amount	50.000	Range	45 - 130	Recovery	=	76.32%
57) 1,1,2,2-Tetrachloroethane-	10.26	84	36816	3.56	ug/L	0.00
Spiked Amount	5.000	Range	65 - 120	Recovery	=	71.20%
64) 1,2-Dichlorobenzene-d4	11.67	152	75249	4.30	ug/L	0.00
Spiked Amount	5.000	Range	80 - 120	Recovery	=	86.00%

Target Compounds

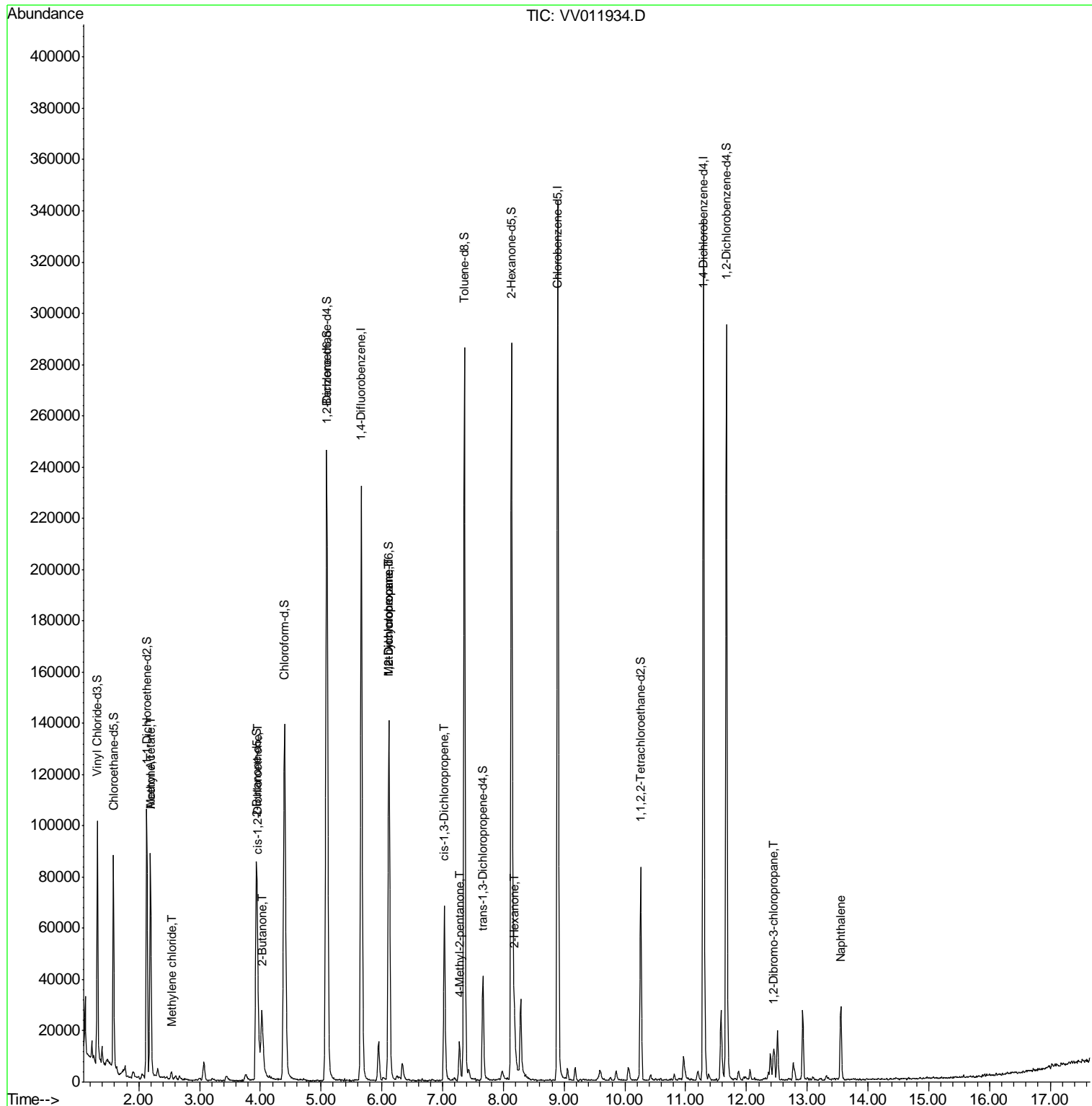
						Qvalue
13) Acetone	2.19	43	91993	50.870	ug/L	96
15) Methyl Acetate	2.19	43	85109	22.134	ug/L #	53
16) Methylene chloride	2.53	84	1434	0.134	ug/L	91
21) 2-Butanone	4.03	43	38435	10.840	ug/L	92
22) cis-1,2-Dichloroethene	3.96	96	1296	0.087	ug/L	83
35) Methylcyclohexane	6.12	83	16576	0.680	ug/L #	16
37) 1,2-Dichloropropane	6.12	63	7359	0.521	ug/L #	87
39) cis-1,3-Dichloropropene	7.03	75	1664	0.086	ug/L #	59
40) 4-Methyl-2-pentanone	7.28	43	10194	1.201	ug/L #	90
48) 2-Hexanone	8.18	43	10061	1.657	ug/L #	85
66) 1,2-Dibromo-3-chloropropan	12.45	75	1398	0.932	ug/L #	3
69) Naphthalene	13.55	128	23660	0.882	ug/L	99

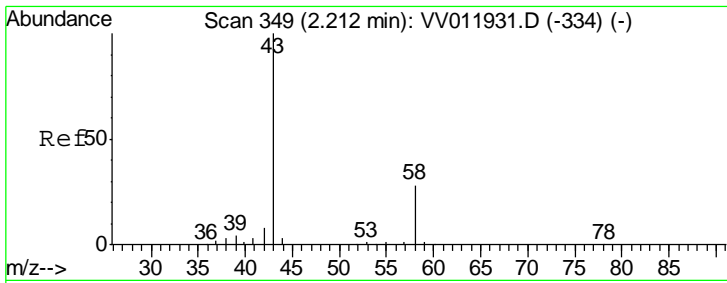
(#) = qualifier out of range (m) = manual integration (+) = signals summed

Data File : VV011934.D
Acq On : 18 Jul 2019 15:27
Operator : SY/MD
Sample : K3823-17
Misc : 25ML/MSVOA_V/WATER
ALS Vial : 5 Sample Multiplier: 1

Instrument :
MSVOA_V
Client Sampled :
A52W1

Quant Time: Jul 19 05:46:46 2019
Quant Method : Z:\VOASRV\HPCHEM1\MSVOA_V\METHOD\SOMVTR071719WMA.M
Quant Title : TRACE VOA SOM01.0
QLast Update : Fri Jul 19 05:34:55 2019
Response via : Initial Calibration

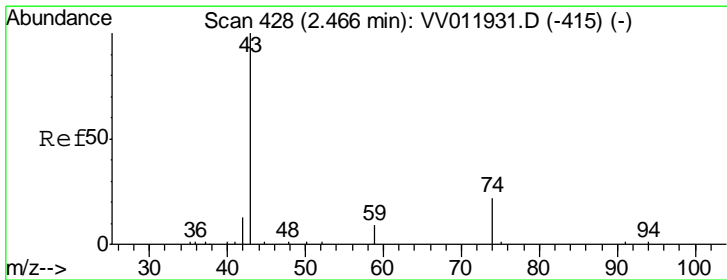
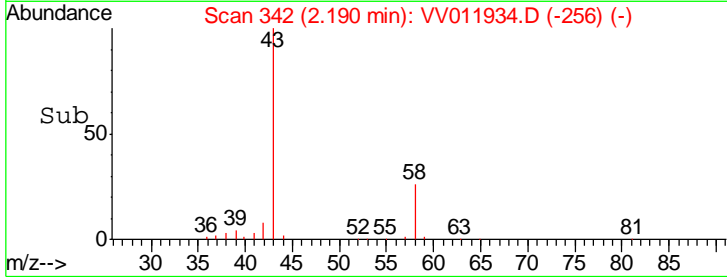
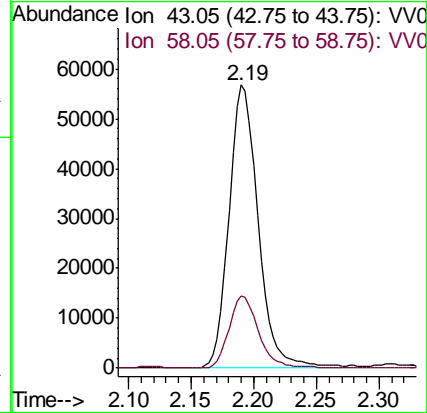
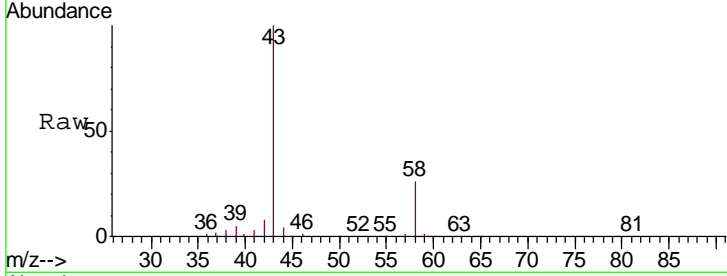




#13
 Acetone
 Concen: 50.870 ug/L
 RT: 2.19 min Scan# 342
 Delta R.T. -0.02 min
 Lab File: VV011934.D
 Acq: 18 Jul 2019 15:27

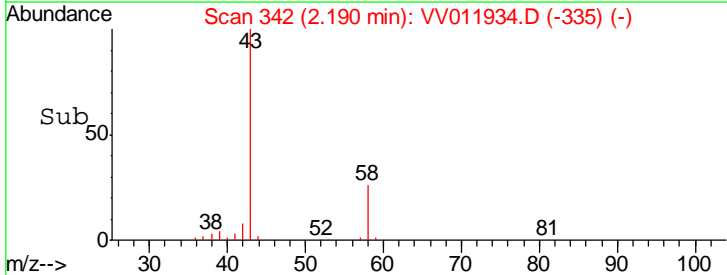
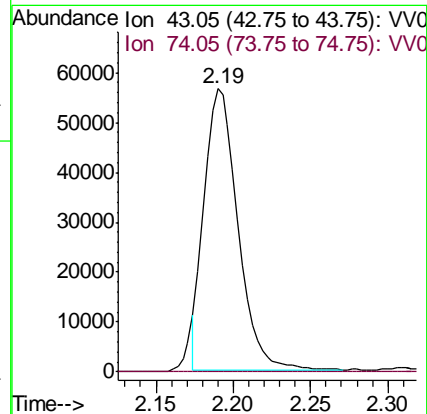
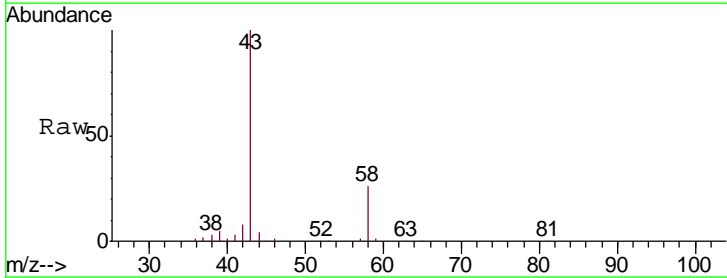
Instrument :
 MSVOA_V
 ClientSampled :
 A52W1

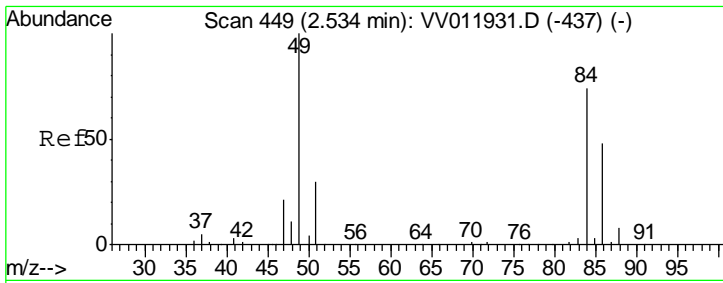
Tgt Ion: 43 Resp: 91993
 Ion Ratio Lower Upper
 43 100
 58 25.8 0.0 55.6



#15
 Methyl Acetate
 Concen: 22.134 ug/L
 RT: 2.19 min Scan# 342
 Delta R.T. -0.28 min
 Lab File: VV011934.D
 Acq: 18 Jul 2019 15:27

Tgt Ion: 43 Resp: 85109
 Ion Ratio Lower Upper
 43 100
 74 0.2 18.3 27.5#

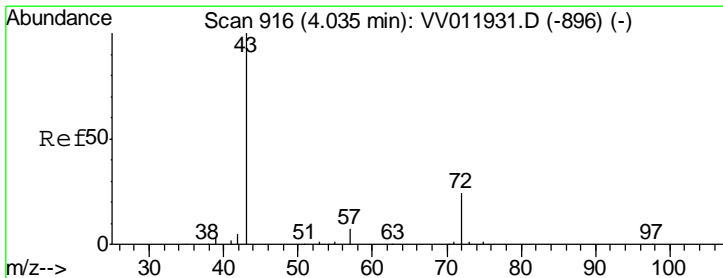
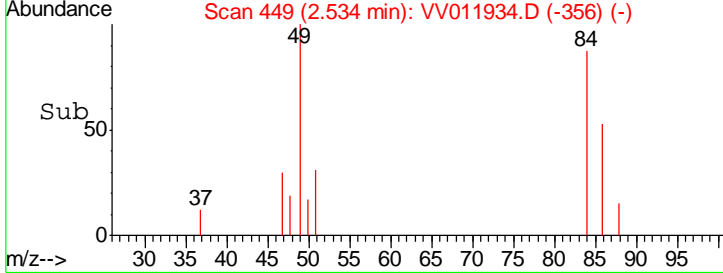
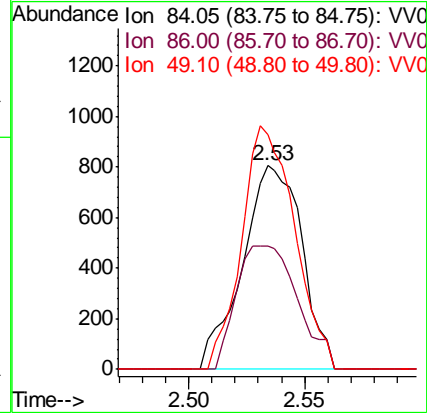
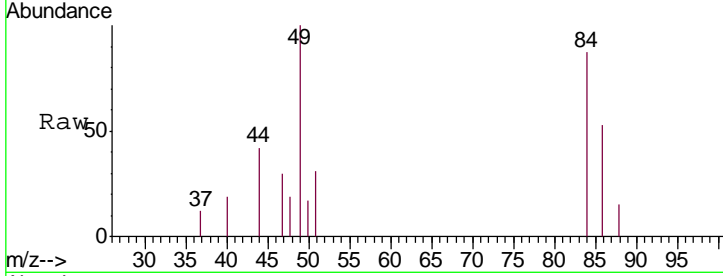




#16
 Methylene chloride
 Concen: 0.134 ug/L
 RT: 2.53 min Scan# 449
 Delta R.T. 0.00 min
 Lab File: VV011934.D
 Acq: 18 Jul 2019 15:27

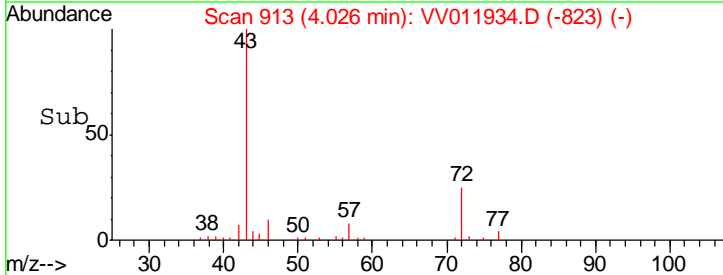
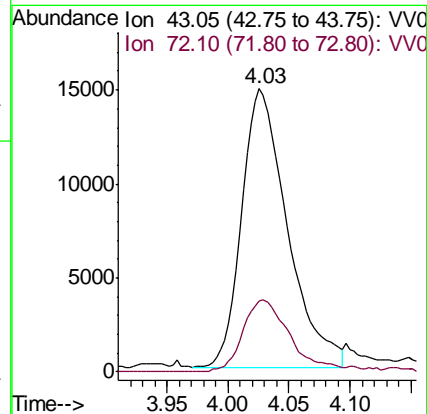
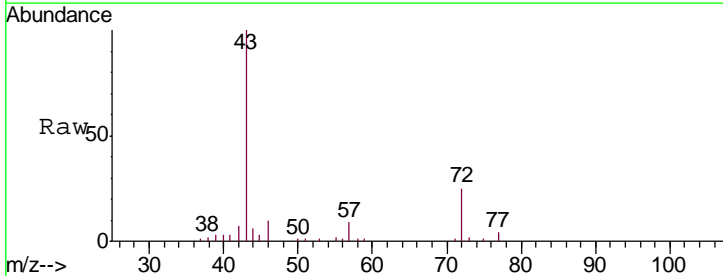
Instrument :
 MSVOA_V
 ClientSampled :
 A52W1

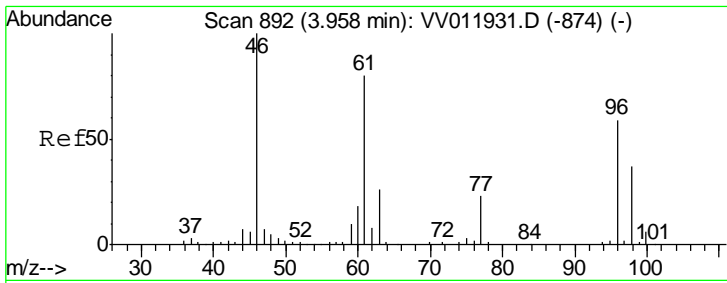
Tgt Ion	Resp	Lower	Upper
84	100		
86	60.7	44.8	83.2
49	115.4	90.4	168.0



#21
 2-Butanone
 Concen: 10.840 ug/L
 RT: 4.03 min Scan# 913
 Delta R.T. -0.01 min
 Lab File: VV011934.D
 Acq: 18 Jul 2019 15:27

Tgt Ion	Resp	Lower	Upper
43	100		
72	26.4	11.2	33.6

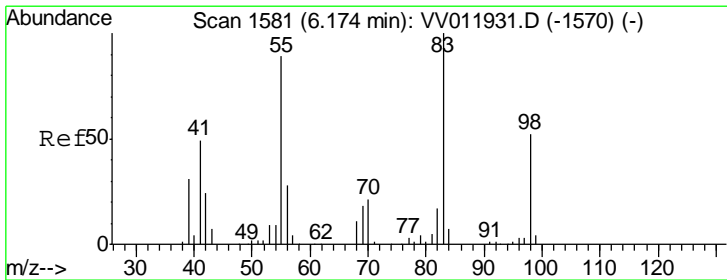
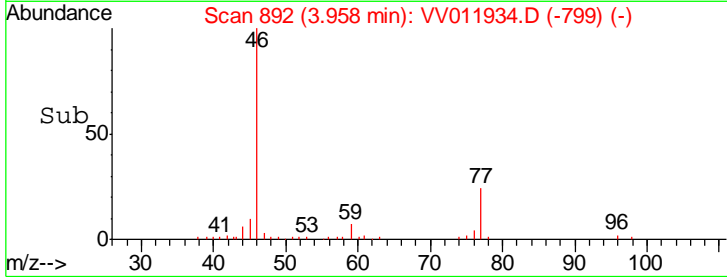
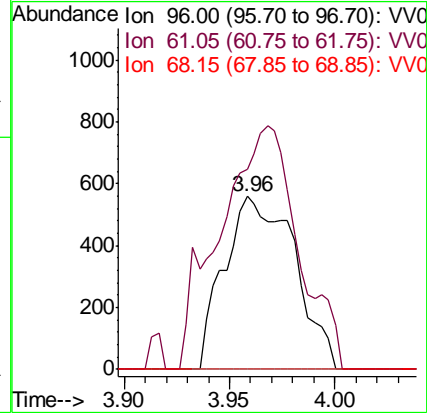
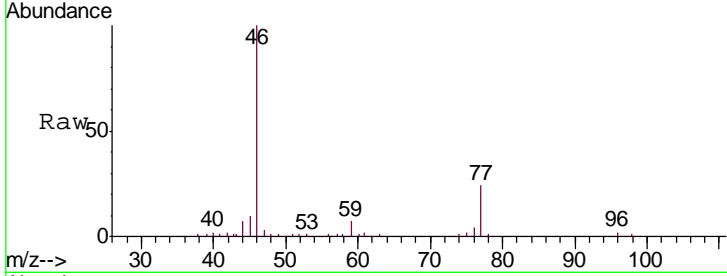




#22
 cis-1,2-Dichloroethene
 Concen: 0.087 ug/L
 RT: 3.96 min Scan# 892
 Delta R.T. 0.00 min
 Lab File: VV011934.D
 Acq: 18 Jul 2019 15:27

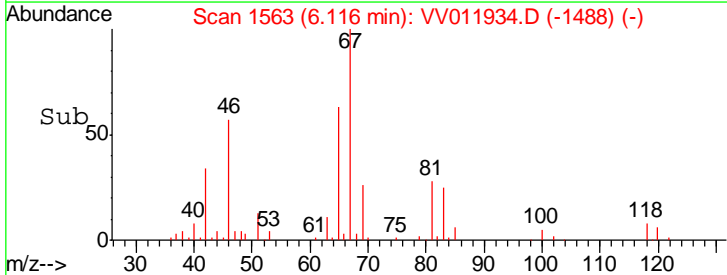
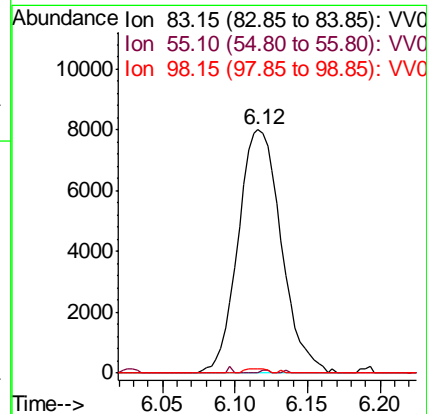
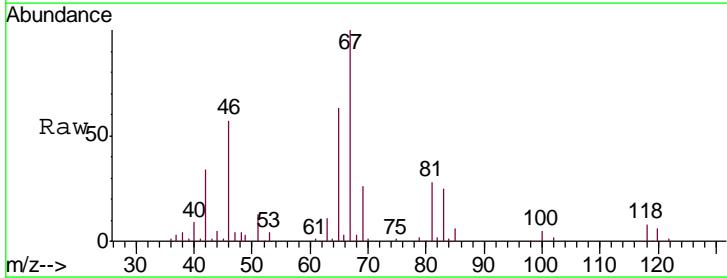
Instrument :
 MSVOA_V
 ClientSampled :
 A52W1

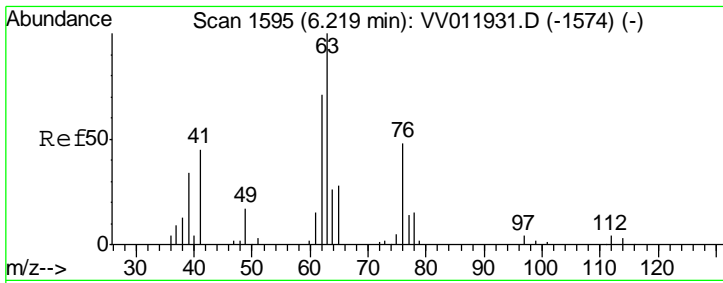
Tgt Ion	Resp	Lower	Upper
96	1296		
61	115.9	95.2	176.8
68	0.0	0.0	0.0



#35
 Methylcyclohexane
 Concen: 0.680 ug/L
 RT: 6.12 min Scan# 1563
 Delta R.T. -0.06 min
 Lab File: VV011934.D
 Acq: 18 Jul 2019 15:27

Tgt Ion	Resp	Lower	Upper
83	16576		
55	0.3	66.7	100.1#
98	0.9	39.0	58.4#

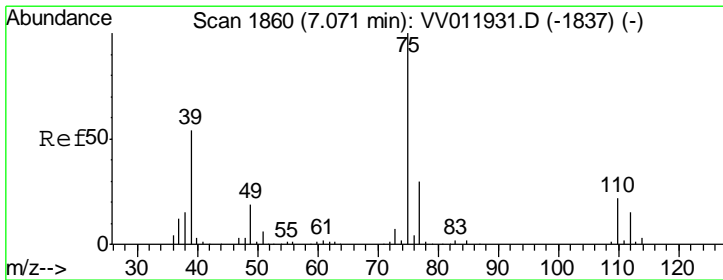
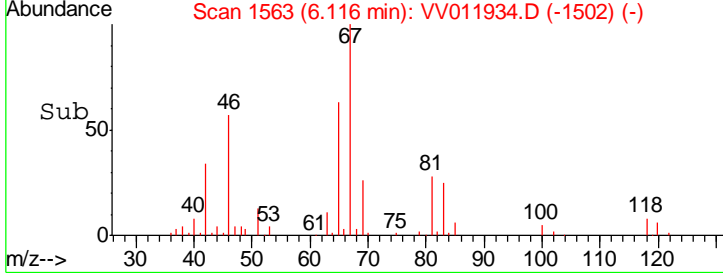
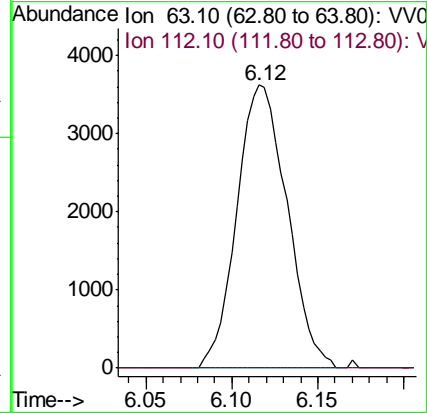
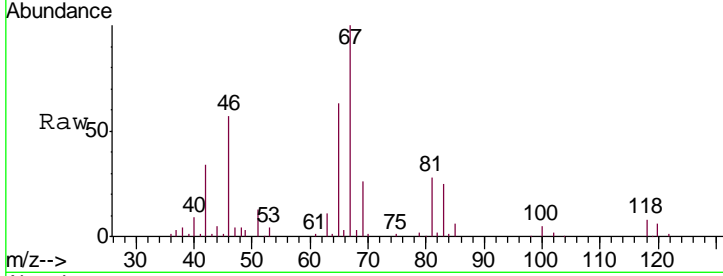




#37
 1,2-Dichloropropane
 Concen: 0.521 ug/L
 RT: 6.12 min Scan# 1563
 Delta R.T. -0.10 min
 Lab File: VV011934.D
 Acq: 18 Jul 2019 15:27

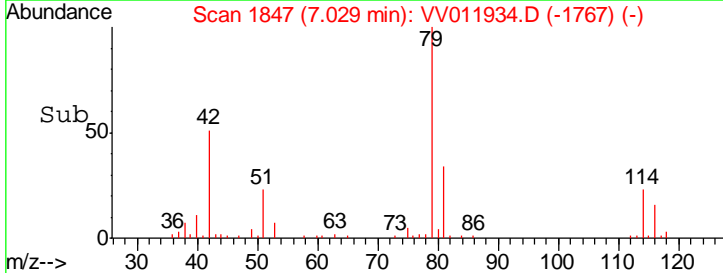
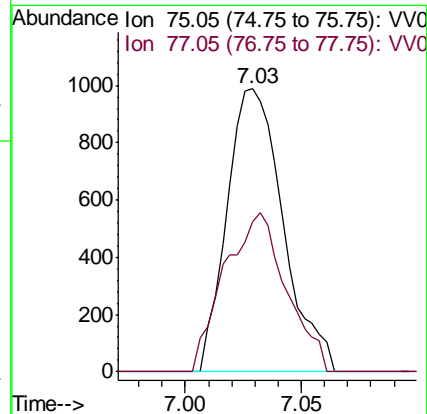
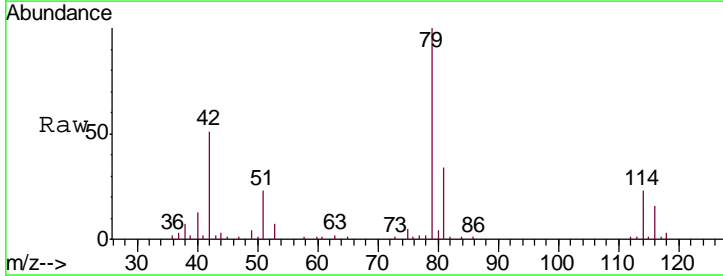
Instrument : MSVOA_V
 ClientSampled : A52W1

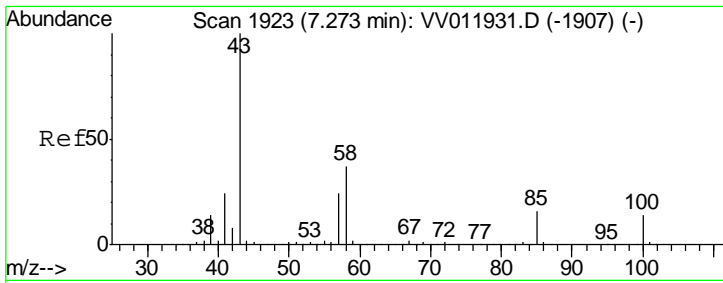
Tgt Ion: 63 Resp: 7359
 Ion Ratio Lower Upper
 63 100
 112 0.0 3.4 5.2#



#39
 cis-1,3-Dichloropropene
 Concen: 0.086 ug/L
 RT: 7.03 min Scan# 1847
 Delta R.T. -0.04 min
 Lab File: VV011934.D
 Acq: 18 Jul 2019 15:27

Tgt Ion: 75 Resp: 1664
 Ion Ratio Lower Upper
 75 100
 77 53.2 21.6 40.2#

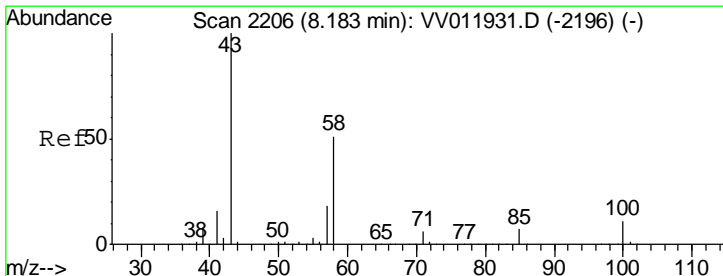
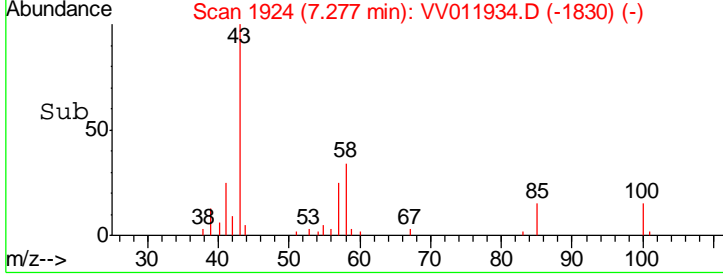
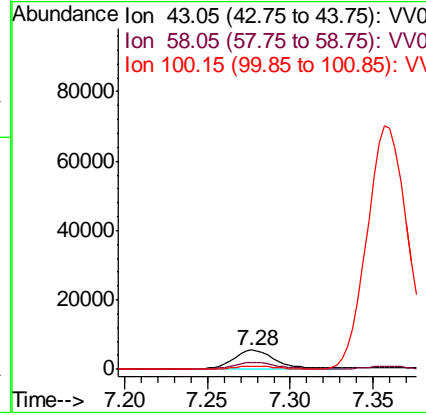
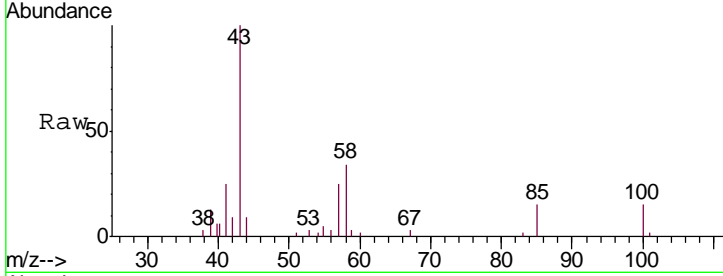




#40
 4-Methyl-2-pentanone
 Concen: 1.201 ug/L
 RT: 7.28 min Scan# 1924
 Delta R.T. 0.00 min
 Lab File: VV011934.D
 Acq: 18 Jul 2019 15:27

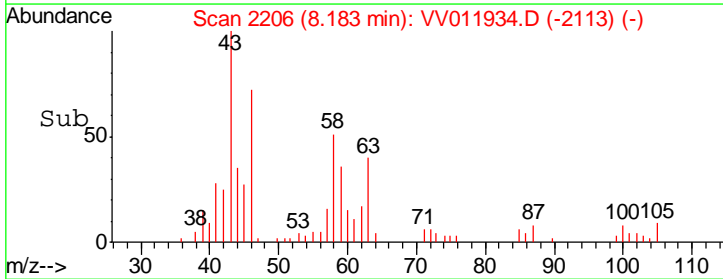
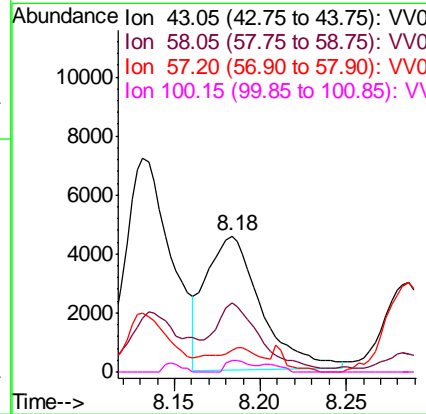
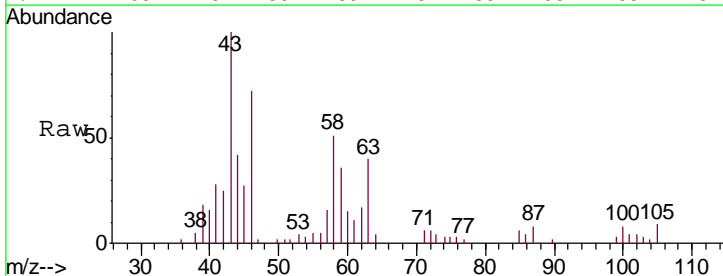
Instrument :
 MSVOA_V
 ClientSampled :
 A52W1

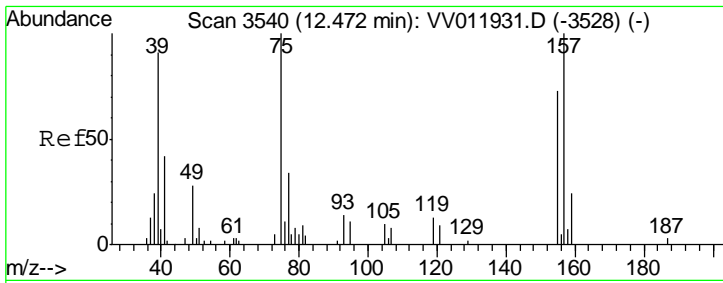
Tgt Ion	Resp	Lower	Upper
43	10194		
58	37.6	29.4	44.2
100	0.0	11.1	16.7#



#48
 2-Hexanone
 Concen: 1.657 ug/L
 RT: 8.18 min Scan# 2206
 Delta R.T. 0.00 min
 Lab File: VV011934.D
 Acq: 18 Jul 2019 15:27

Tgt Ion	Resp	Lower	Upper
43	10061		
58	39.0	41.1	61.7#
57	16.4	14.3	21.5
100	4.1	8.7	13.1#

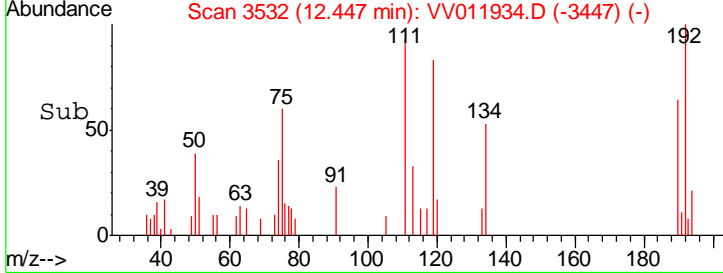
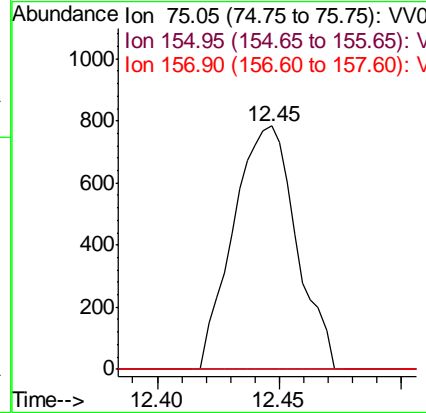
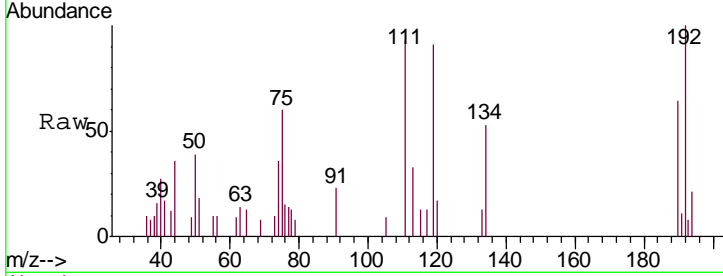




#66
 1,2-Dibromo-3-chloropropane
 Concen: 0.932 ug/L
 RT: 12.45 min Scan# 3532
 Delta R.T. -0.03 min
 Lab File: VV011934.D
 Acq: 18 Jul 2019 15:27

Instrument :
 MSVOA_V
 ClientSampled :
 A52W1

Tgt Ion	Resp	Lower	Upper
75	1398		
75	100		
155	0.0	59.4	89.0#
157	0.0	85.5	128.3#



#69
 Naphthalene
 Concen: 0.882 ug/L
 RT: 13.55 min Scan# 3876
 Delta R.T. 0.00 min
 Lab File: VV011934.D
 Acq: 18 Jul 2019 15:27

Tgt Ion	Resp	Lower	Upper
128	23660		
128	100		
129	10.6	8.6	13.0
127	12.7	10.7	16.1

