

Data Path : Z:\VOASRV\HPCHEM1\MSVOA V\DATA\VV071819\
 Data File : VV011934.D
 Acq On : 18 Jul 2019 15:27
 Operator : SY/MD
 Sample : K3823-17
 Misc : 25ML/MSVOA V/WATER
 ALS Vial : 5 Sample Multiplier: 1

Instrument :
 MSVOA_V
 ClientSampleId :
 A52W1

Integration Parameters: rteint.p
 Integrator: RTE
 Smoothing : ON
 Sampling : 1
 Start Thrs: 0.1
 Stop Thrs : 0

Filtering: 5
 Min Area: 3 % of largest Peak
 Max Peaks: 100
 Peak Location: TOP

If leading or trailing edge < 100 prefer < Baseline drop else tangent >
 Peak separation: 5

Method : Z:\VOASRV\HPCHEM1\MSVOA_V\METHOD\SOMVTR071719WMA.M
 Title : TRACE VOA SOM01.0

Signal : TIC

peak #	R.T. min	first scan	max scan	last scan	PK TY	peak height	corr. area	corr. % max.	% of total
1	1.116	3	8	18	rVB3	22677	24535	4.15%	0.414%
2	1.319	61	71	85	rBV	94720	105189	17.77%	1.774%
3	1.392	89	94	106	rVB	7099	8642	1.46%	0.146%
4	1.582	143	153	165	rVB	82993	94996	16.05%	1.602%
5	1.775	208	213	220	rVB6	4397	6052	1.02%	0.102%
6	2.132	311	324	333	rBV	105035	148331	25.06%	2.502%
7	2.190	333	342	361	rVB	87019	139252	23.53%	2.349%
8	2.312	373	380	393	rVB2	3635	6480	1.09%	0.109%
9	3.074	604	617	627	rBV2	7320	14305	2.42%	0.241%
10	3.939	873	886	904	rBV	85078	227075	38.37%	3.830%
11	4.026	904	913	939	rVB2	25929	71276	12.04%	1.202%
12	4.399	1012	1029	1058	rBV3	138686	350094	59.16%	5.905%
13	5.093	1228	1245	1267	rBV2	246085	591805	100.00%	9.982%
14	5.662	1407	1422	1442	rBV	232125	454578	76.81%	7.667%
15	5.949	1499	1511	1526	rBV4	15419	29870	5.05%	0.504%
16	6.116	1549	1563	1590	rVB	140149	287402	48.56%	4.848%
17	6.331	1623	1630	1644	rBV5	6015	11894	2.01%	0.201%
18	7.029	1834	1847	1860	rBV2	68349	120833	20.42%	2.038%
19	7.277	1912	1924	1936	rBV2	15375	27976	4.73%	0.472%
20	7.357	1937	1949	1967	rVV	285696	493695	83.42%	8.327%
21	7.666	2033	2045	2060	rBV	40787	72007	12.17%	1.215%
22	7.981	2133	2143	2151	rBV10	3573	7494	1.27%	0.126%
23	8.132	2178	2190	2222	rBV2	287630	590379	99.76%	9.958%
24	8.283	2228	2237	2250	rVB2	28407	49029	8.28%	0.827%
25	8.894	2414	2427	2454	rBV	343289	568211	96.01%	9.584%
26	9.055	2471	2477	2486	rVB3	4488	6648	1.12%	0.112%
27	9.180	2508	2516	2527	rBV4	5031	7703	1.30%	0.130%
28	9.858	2716	2727	2738	rBV4	3634	7170	1.21%	0.121%
29	10.058	2780	2789	2802	rBV7	5164	11027	1.86%	0.186%
30	10.260	2841	2852	2868	rVB	83229	130005	21.97%	2.193%
31	10.964	3063	3071	3080	rBV5	9192	17691	2.99%	0.298%
32	11.202	3131	3145	3157	rBV8	3843	7855	1.33%	0.132%
33	11.292	3161	3173	3194	rVV	335744	543578	91.85%	9.169%
34	11.582	3252	3263	3279	rBV2	27340	50850	8.59%	0.858%

Data Path : Z:\VOASRV\HPCHEM1\MSVOA V\DATA\VV071819\
Data File : VV011934.D
Acq On : 18 Jul 2019 15:27
Operator : SY/MD
Sample : K3823-17
Misc : 25ML/MSVOA V/WATER
ALS Vial : 5 Sample Multiplier: 1

Instrument :
MSVOA_V
ClientSampleId :
A52W1

Integration Parameters: rteint.p
Integrator: RTE
Smoothing : ON Filtering: 5
Sampling : 1 Min Area: 3 % of largest Peak
Start Thrs: 0.1 Max Peaks: 100
Stop Thrs : 0 Peak Location: TOP

If leading or trailing edge < 100 prefer < Baseline drop else tangent >
Peak separation: 5

Method : Z:\VOASRV\HPCHEM1\MSVOA_V\METHOD\SOMVTR071719WMA.M
Title : TRACE VOA SOM01.0

35	11.669	3279	3290	3310	rVB	293877	476353	80.49%	8.035%
36	12.061	3402	3412	3420	rVB4	4149	6322	1.07%	0.107%
37	12.395	3509	3516	3524	rBV5	8488	12910	2.18%	0.218%
38	12.450	3524	3533	3544	rVV5	11147	22926	3.87%	0.387%
39	12.511	3544	3552	3564	rVB	19149	28457	4.81%	0.480%
40	12.771	3625	3633	3636	rBV5	6728	8828	1.49%	0.149%
41	12.926	3671	3681	3692	rVB3	26808	42297	7.15%	0.713%
42	13.553	3862	3876	3887	rBV	28400	46667	7.89%	0.787%

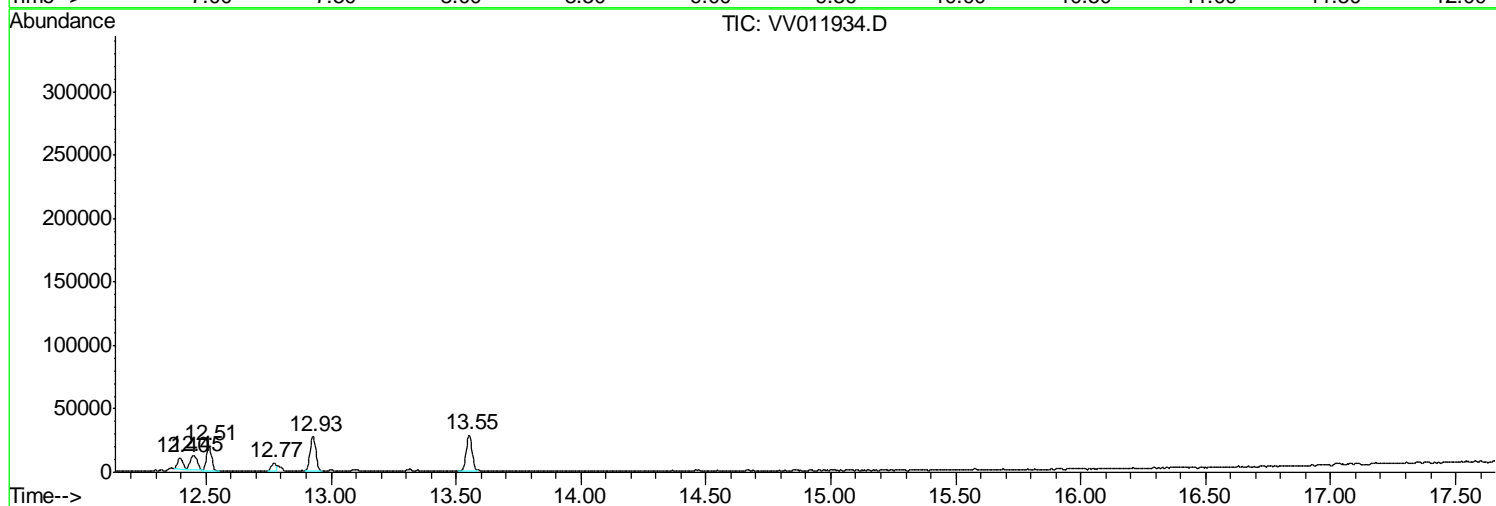
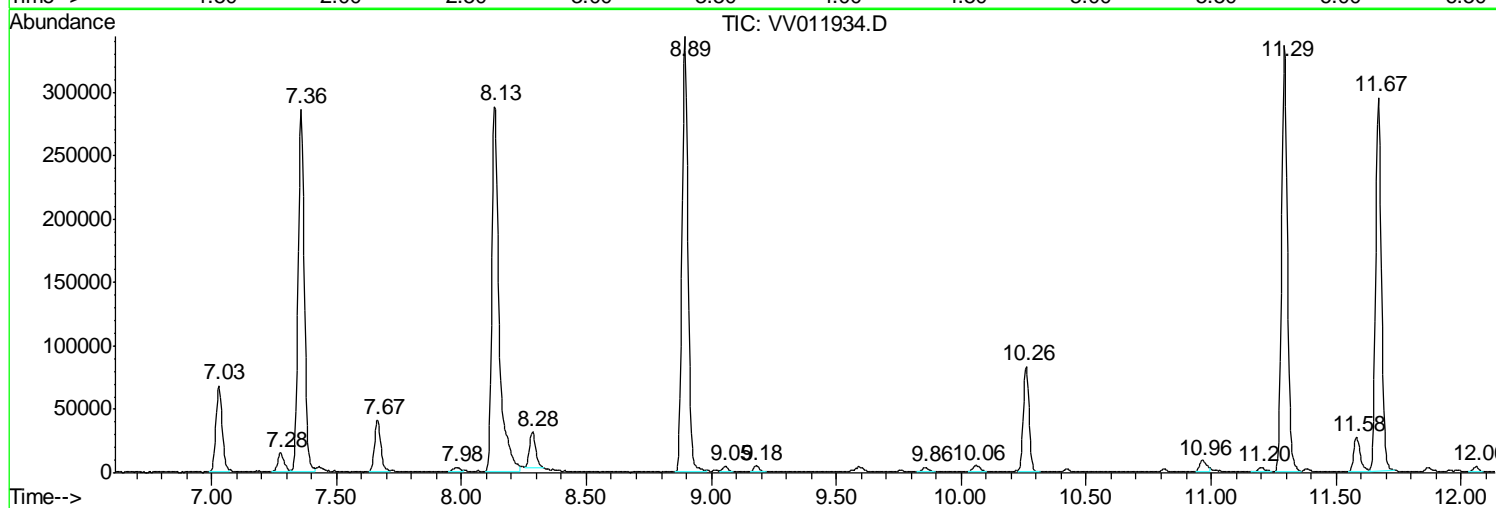
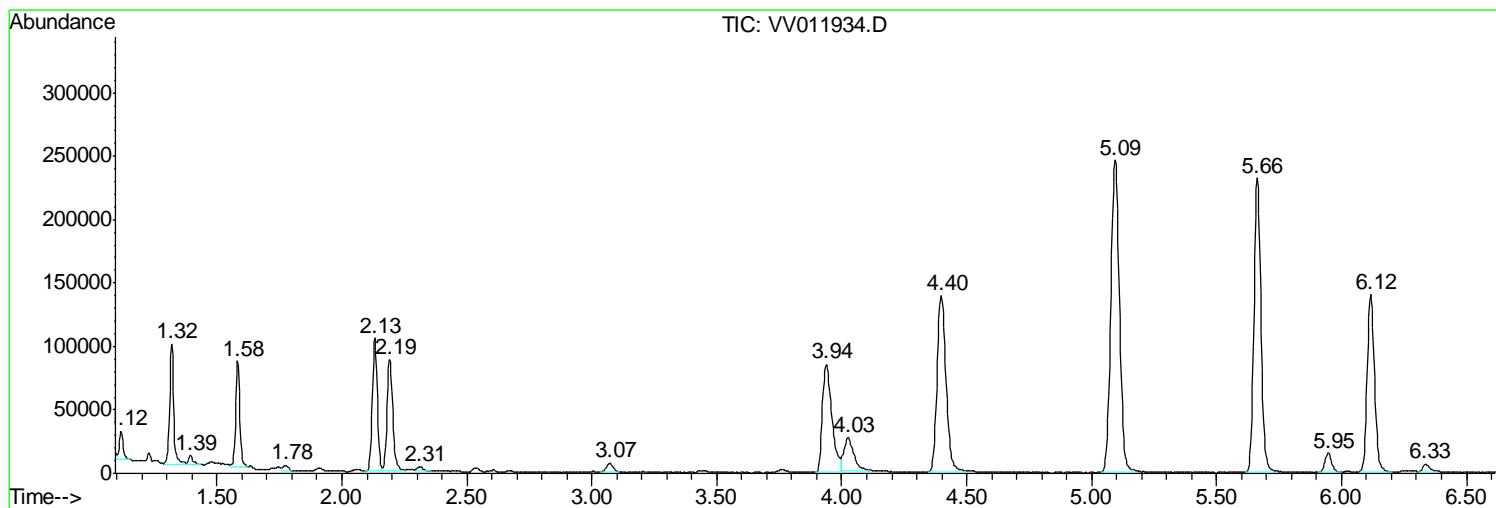
Sum of corrected areas: 5928687

Data Path : Z:\VOASRV\HPCHEM1\MSVOA V\DATA\VV071819\
Data File : VV011934.D
Acq On : 18 Jul 2019 15:27
Operator : SY/MD
Sample : K3823-17
Misc : 25ML/MSVOA V/WATER
ALS Vial : 5 Sample Multiplier: 1

Instrument :
MSVOA_V
ClientSampled :
A52W1

Quant Method : Z:\VOASRV\HPCHEM1\MSVOA_V\METHOD\SOMVTR071719WMA.M
Quant Title : TRACE VOA SOM01.0

TIC Library : C:\DATABASE\NIST11.L
TIC Integration Parameters: LSCINT.P



Data Path : Z:\VOASRV\HPCHEM1\MSVOA V\DATA\VV071819\
 Data File : VV011934.D
 Acq On : 18 Jul 2019 15:27
 Operator : SY/MD
 Sample : K3823-17
 Misc : 25ML/MSVOA V/WATER
 ALS Vial : 5 Sample Multiplier: 1

Instrument :
 MSVOA_V
 ClientSampleID :
 A52W1

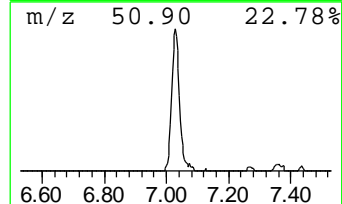
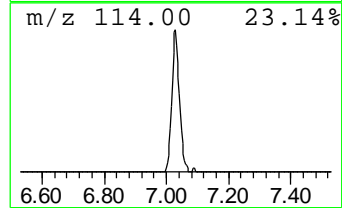
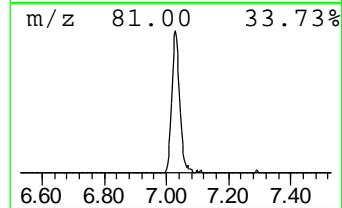
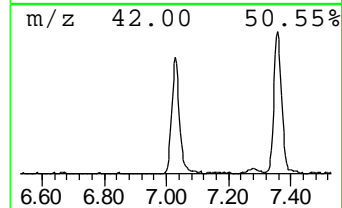
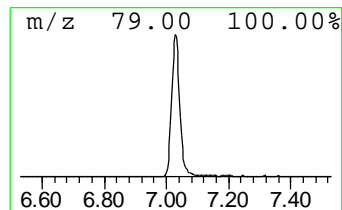
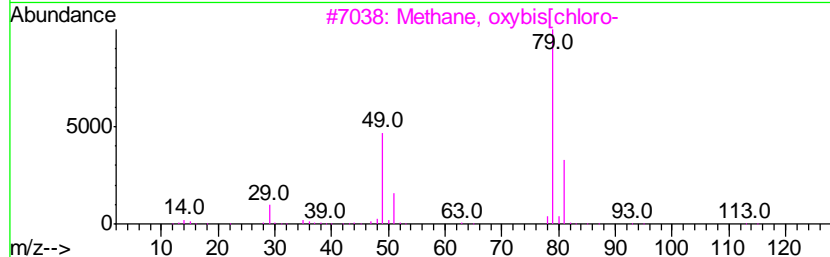
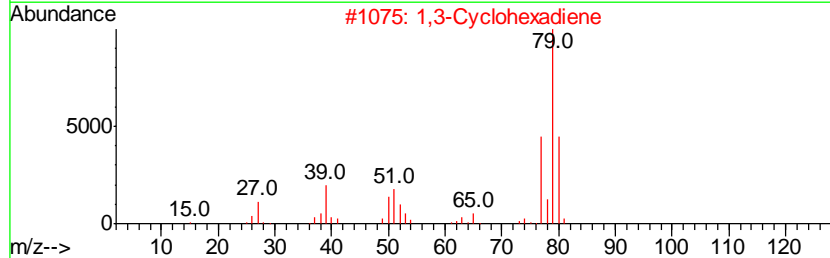
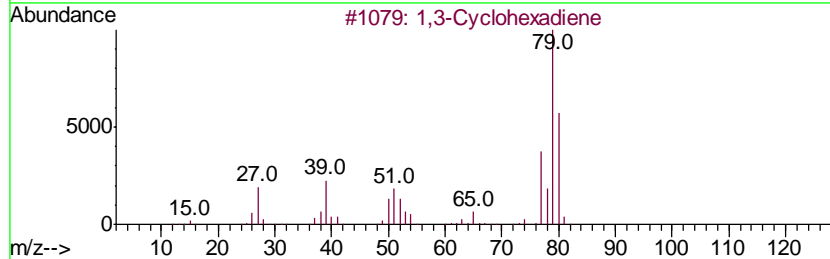
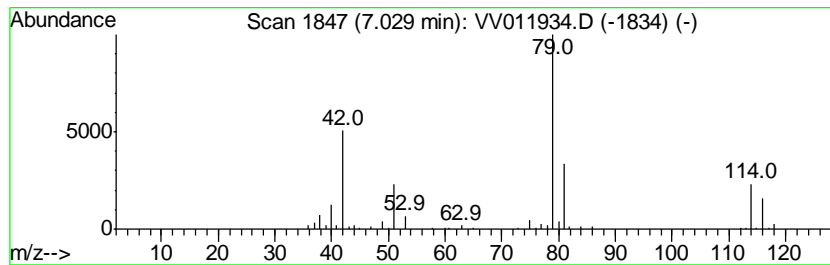
Quant Method : Z:\VOASRV\HPCHEM1\MSVOA_V\METHOD\SOMVTR071719WMA.M
 Quant Title : TRACE VOA SOM01.0

TIC Library : C:\DATABASE\NIST11.L
 TIC Integration Parameters: LSCINT.P

 Peak Number 1 unknown-01 Concentration Rank 1

R.T.	EstConc	Area	Relative to ISTD	R.T.
7.03	1.33 ug/L	120833	1,4-Difluorobenzene	5.66

Hit#	of	Tentative ID	MW	MolForm	CAS#	Qual
1	5	1,3-Cyclohexadiene	80	C6H8	000592-57-4	25
2		1,3-Cyclohexadiene	80	C6H8	000592-57-4	25
3		Methane, oxybis[chloro-	114	C2H4Cl2O	000542-88-1	23
4		2-Propanol, 1,3-dichloro-	128	C3H6Cl2O	000096-23-1	17
5		Cyclopropane	42	C3H6	000075-19-4	9



Data Path : Z:\VOASRV\HPCHEM1\MSVOA_V\DATA\VV071819\
Data File : VV011934.D
Acq On : 18 Jul 2019 15:27
Operator : SY/MD
Sample : K3823-17
Misc : 25ML/MSVOA_V/WATER
ALS Vial : 5 Sample Multiplier: 1

Instrument :
MSVOA_V
ClientSampleId :
A52W1

Quant Method : Z:\VOASRV\HPCHEM1\MSVOA_V\METHOD\SOMVTR071719WMA.M
Quant Title : TRACE VOA SOM01.0

TIC Library : C:\DATABASE\NIST11.L
TIC Integration Parameters: LSCINT.P

TIC Top Hit name	RT	EstConc	Units	Response	--Internal Standard--			
					#	RT	Resp	Conc
unknown-01	7.03	1.3	ug/L	120833	1	5.66	454578	5.0