

Data Path : Z:\voasrv\HPCHEM1\MSVOA_V\Data\VV072022\
 Data File : VV026854.D
 Acq On : 20 Jul 2022 17:08
 Operator : SY/MD
 Sample : N3802-05
 Misc : 25.0mL/MSVOA_V/WATER
 ALS Vial : 15 Sample Multiplier: 1

Instrument :
 MSVOA_V
 ClientSampleId :
 GBHX0

Integration Parameters: rteint.p

Integrator: RTE
 Smoothing : ON Filtering: 5
 Sampling : 1 Min Area: 3 % of largest Peak
 Start Thrs: 0.1 Max Peaks: 100
 Stop Thrs : 0 Peak Location: TOP

If leading or trailing edge < 100 prefer < Baseline drop else tangent >
 Peak separation: 5

Method : Z:\voasrv\HPCHEM1\MSVOA_V\Method\SFAMVTR071122WMA.M
 Title : TRACE VOA SFAM1.0

Signal : TIC: VV026854.D\data.ms

| peak # | R.T. min | first scan | max scan | last scan | PK TY | peak height | corr. area | corr. % max. | % of total |
|--------|----------|------------|----------|-----------|-------|-------------|------------|--------------|------------|
| 1 | 1.301 | 72 | 81 | 96 | rVB2 | 118028 | 164918 | 20.64% | 2.496% |
| 2 | 1.564 | 156 | 163 | 175 | rBV | 107279 | 119532 | 14.96% | 1.809% |
| 3 | 2.105 | 320 | 331 | 345 | rBV | 180963 | 261404 | 32.72% | 3.956% |
| 4 | 2.175 | 345 | 353 | 372 | rVB3 | 9354 | 23349 | 2.92% | 0.353% |
| 5 | 2.664 | 491 | 505 | 529 | rBV3 | 11328 | 41809 | 5.23% | 0.633% |
| 6 | 3.889 | 876 | 886 | 926 | rBV | 112750 | 366267 | 45.84% | 5.543% |
| 7 | 4.352 | 1009 | 1030 | 1062 | rBV | 158300 | 409558 | 51.26% | 6.198% |
| 8 | 5.047 | 1230 | 1246 | 1278 | rBV2 | 298705 | 763186 | 95.51% | 11.550% |
| 9 | 5.619 | 1413 | 1424 | 1448 | rBV | 239576 | 493398 | 61.75% | 7.467% |
| 10 | 5.908 | 1505 | 1514 | 1515 | rBV3 | 10764 | 10442 | 1.31% | 0.158% |
| 11 | 6.072 | 1552 | 1565 | 1590 | rBV | 194158 | 408755 | 51.16% | 6.186% |
| 12 | 6.580 | 1711 | 1723 | 1741 | rBV2 | 22908 | 47482 | 5.94% | 0.719% |
| 13 | 6.992 | 1840 | 1851 | 1879 | rBV | 68426 | 133900 | 16.76% | 2.026% |
| 14 | 7.317 | 1941 | 1952 | 1971 | rBV | 270770 | 490167 | 61.34% | 7.418% |
| 15 | 7.628 | 2039 | 2049 | 2067 | rBV | 40950 | 75443 | 9.44% | 1.142% |
| 16 | 7.940 | 2136 | 2146 | 2156 | rBV4 | 5969 | 11816 | 1.48% | 0.179% |
| 17 | 8.091 | 2182 | 2193 | 2230 | rBV | 407003 | 799034 | 100.00% | 12.093% |
| 18 | 8.644 | 2353 | 2365 | 2378 | rBV2 | 4991 | 8594 | 1.08% | 0.130% |
| 19 | 8.853 | 2418 | 2430 | 2450 | rBV | 387432 | 642429 | 80.40% | 9.723% |
| 20 | 10.217 | 2839 | 2854 | 2877 | rBV | 158748 | 258095 | 32.30% | 3.906% |
| 21 | 10.384 | 2894 | 2906 | 2920 | rBV2 | 13137 | 21256 | 2.66% | 0.322% |
| 22 | 11.249 | 3164 | 3175 | 3193 | rBV | 352877 | 548573 | 68.65% | 8.302% |
| 23 | 11.625 | 3280 | 3292 | 3311 | rBV | 316463 | 508076 | 63.59% | 7.689% |

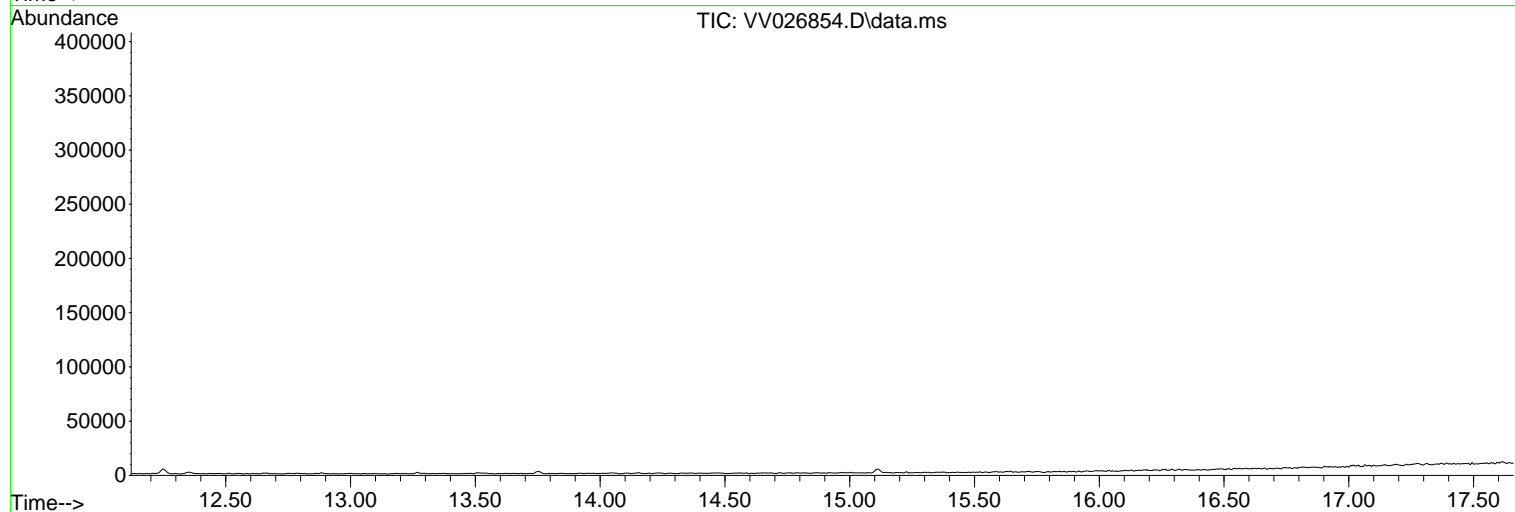
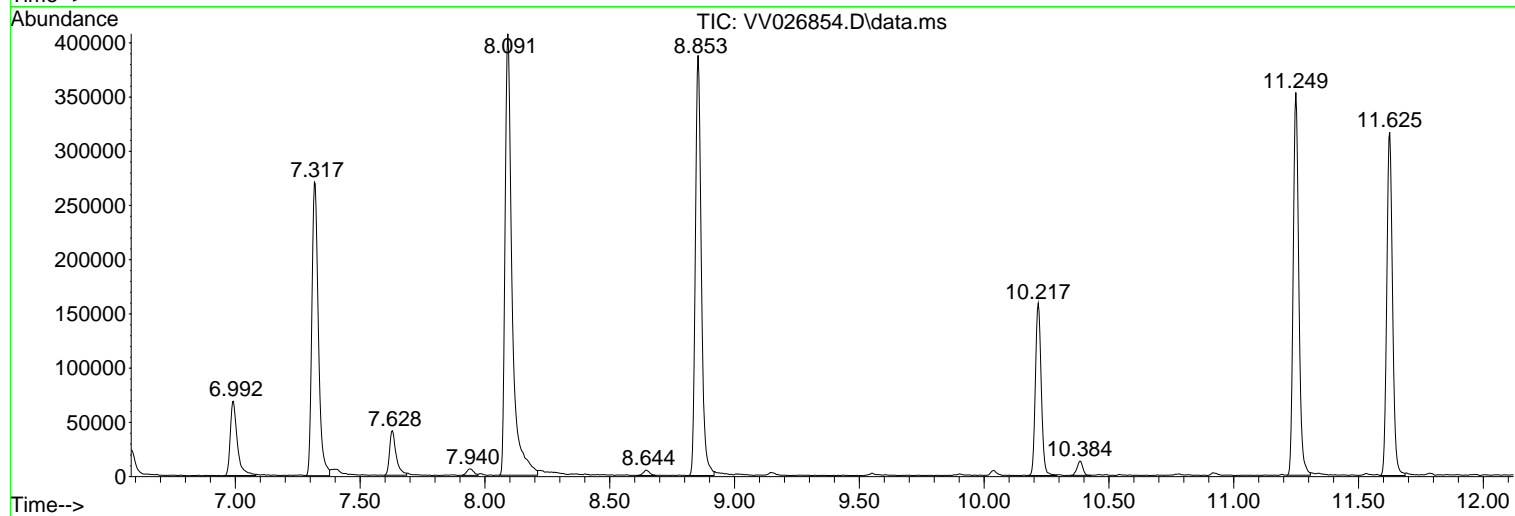
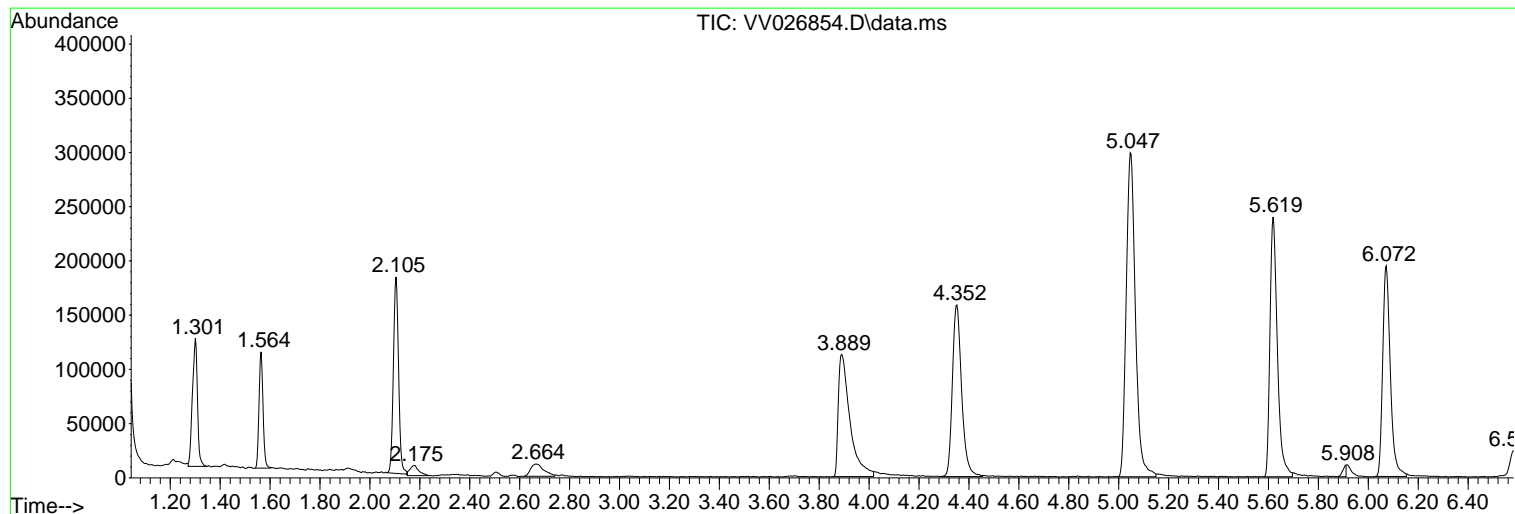
Sum of corrected areas: 6607483

Data Path : Z:\voasrv\HPCHEM1\MSVOA_V\Data\VV072022\
Data File : VV026854.D
Acq On : 20 Jul 2022 17:08
Operator : SY/MD
Sample : N3802-05
Misc : 25.0mL/MSVOA_V/WATER
ALS Vial : 15 Sample Multiplier: 1

Instrument :
MSVOA_V
ClientSampleId :
GBHX0

Quant Method : Z:\voasrv\HPCHEM1\MSVOA_V\Method\SFAMVTR071122WMA.M
Quant Title : TRACE VOA SFAM1.0

TIC Library : C:\Database\NIST20.L
TIC Integration Parameters: LSCINT.P



Data Path : Z:\voasrv\HPCHEM1\MSVOA_V\Data\VV072022\
Data File : VV026854.D
Acq On : 20 Jul 2022 17:08
Operator : SY/MD
Sample : N3802-05
Misc : 25.0mL/MSVOA_V/WATER
ALS Vial : 15 Sample Multiplier: 1

Instrument :
MSVOA_V
ClientSampleId :
GBHX0

Quant Method : Z:\voasrv\HPCHEM1\MSVOA_V\Method\SFAMVTR071122WMA.M
Quant Title : TRACE VOA SFAM1.0

TIC Library : C:\Database\NIST20.L
TIC Integration Parameters: LSCINT.P

No Library Search Compounds Detected

Data Path : Z:\voasrv\HPCHEM1\MSVOA_V\Data\VV072022\
Data File : VV026854.D
Acq On : 20 Jul 2022 17:08
Operator : SY/MD
Sample : N3802-05
Misc : 25.0mL/MSVOA_V/WATER
ALS Vial : 15 Sample Multiplier: 1

Instrument :
MSVOA_V
ClientSampleId :
GBHX0

Quant Method : Z:\voasrv\HPCHEM1\MSVOA_V\Method\SFAMVTR071122WMA.M
Quant Title : TRACE VOA SFAM1.0

TIC Library : C:\Database\NIST0.L
TIC Integration Parameters: LSCINT.P

| TIC Top Hit name | RT | EstConc | Units | Response | --Internal Standard-- | | | |
|------------------|----|---------|-------|----------|-----------------------|----|------|------|
| | | | | | # | RT | Resp | Conc |
