

Data Path : Z:\voasrv\HPCHEM1\MSVOA_V\Data\VW072122\
 Data File : VW026870.D
 Acq On : 21 Jul 2022 13:15
 Operator : SY/MD
 Sample : N3802-04
 Misc : 25.0mL/MSVOA_V/WATER
 ALS Vial : 9 Sample Multiplier: 1

Instrument :
 MSVOA_V
 ClientSampleId :
 GBHW9

Quant Time: Jul 22 05:55:42 2022
 Quant Method : Z:\voasrv\HPCHEM1\MSVOA_V\Method\SFAMVTR071122WMA.M
 Quant Title : TRACE VOA SFAM1.0
 QLast Update : Fri Jul 22 05:53:14 2022
 Response via : Initial Calibration

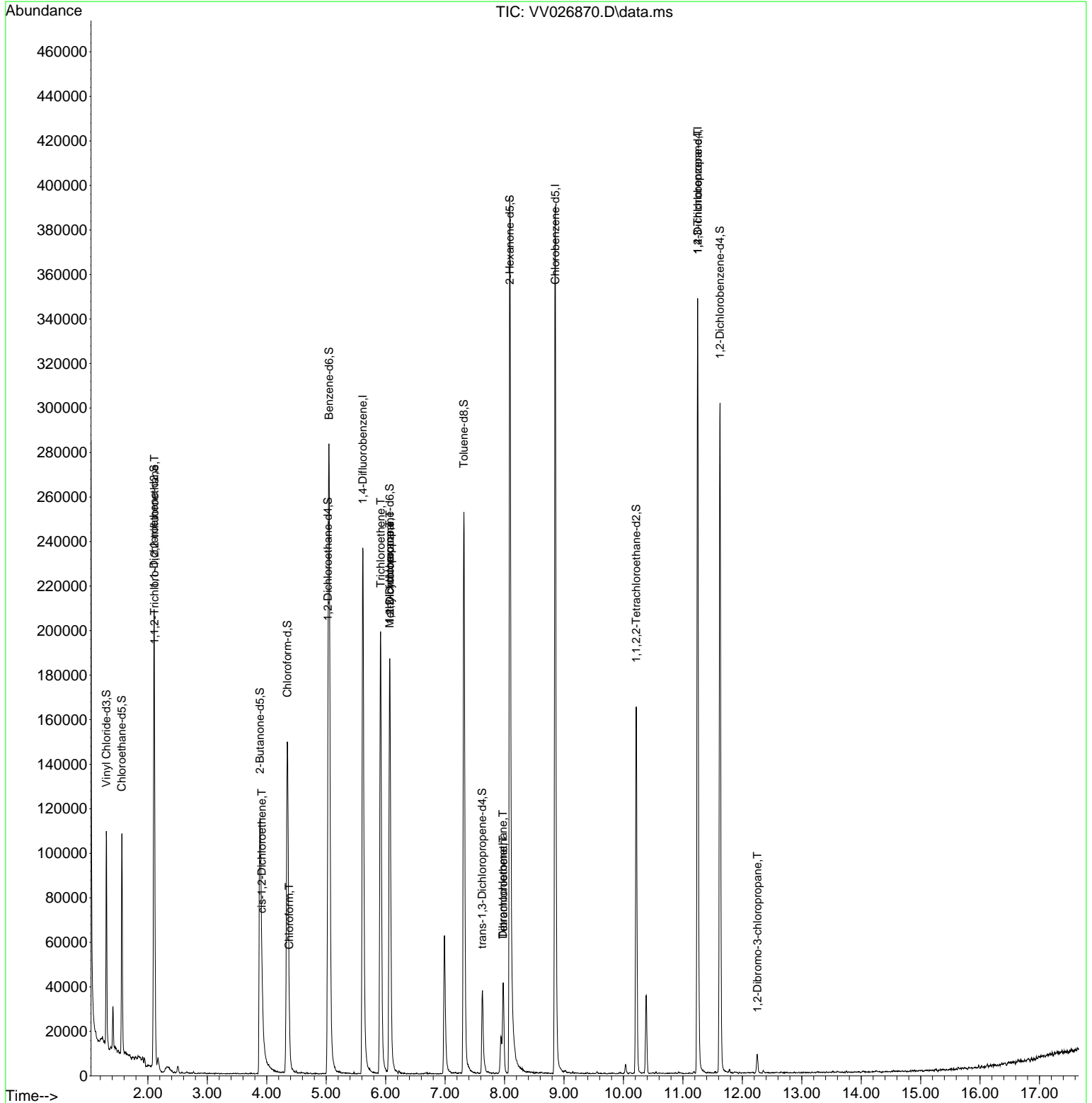
Compound	R.T.	QIon	Response	Conc	Units	Dev(Min)
Internal Standards						
1) 1,4-Difluorobenzene	5.616	114	214771	5.000	ug/L	0.00
28) Chlorobenzene-d5	8.854	117	228316	5.000	ug/L	0.00
58) 1,4-Dichlorobenzene-d4	11.249	152	94816	5.000	ug/L	0.00
System Monitoring Compounds						
4) Vinyl Chloride-d3	1.301	65	63286	3.230	ug/L	0.00
Spiked Amount	5.000	Range 40 - 130	Recovery	=	64.600%	
7) Chloroethane-d5	1.561	69	64797	3.827	ug/L	0.00
Spiked Amount	5.000	Range 65 - 130	Recovery	=	76.600%	
11) 1,1-Dichloroethene-d2	2.101	63	87096	2.315	ug/L	0.00
Spiked Amount	5.000	Range 60 - 125	Recovery	=	46.400%#	
20) 2-Butanone-d5	3.886	46	190035	62.144	ug/L	0.00
Spiked Amount	50.000	Range 40 - 130	Recovery	=	124.280%	
24) Chloroform-d	4.346	84	161993	4.728	ug/L	0.00
Spiked Amount	5.000	Range 70 - 125	Recovery	=	94.600%	
26) 1,2-Dichloroethane-d4	5.031	65	76027	5.080	ug/L	0.00
Spiked Amount	5.000	Range 70 - 130	Recovery	=	101.600%	
32) Benzene-d6	5.050	84	262824	3.788	ug/L	0.00
Spiked Amount	5.000	Range 70 - 125	Recovery	=	75.800%	
36) 1,2-Dichloropropane-d6	6.069	67	97547	4.689	ug/L	0.00
Spiked Amount	5.000	Range 60 - 140	Recovery	=	93.800%	
41) Toluene-d8	7.317	98	182841	2.969	ug/L	0.00
Spiked Amount	5.000	Range 70 - 130	Recovery	=	59.400%#	
43) trans-1,3-Dichloroprop...	7.625	79	25213	3.705	ug/L	0.00
Spiked Amount	5.000	Range 55 - 130	Recovery	=	74.000%	
46) 2-Hexanone-d5	8.088	63	140616	47.722	ug/L	0.00
Spiked Amount	50.000	Range 45 - 130	Recovery	=	95.440%	
56) 1,1,2,2-Tetrachloroeth...	10.217	84	81295	5.017	ug/L	0.00
Spiked Amount	5.000	Range 65 - 120	Recovery	=	100.400%	
66) 1,2-Dichlorobenzene-d4	11.625	152	81993	4.963	ug/L	0.00
Spiked Amount	5.000	Range 80 - 120	Recovery	=	99.200%	
Target Compounds						
10) 1,1,2-Trichloro-1,2,2-...	2.111	101	20376	1.049	ug/L	97
22) cis-1,2-Dichloroethene	3.918	96	2919	0.167	ug/L	74
25) Chloroform	4.378	83	2679	0.081	ug/L	100
34) Trichloroethene	5.915	95	73792	3.933	ug/L	99
35) Methylcyclohexane	6.066	83	23514	0.821	ug/L #	20
37) 1,2-Dichloropropane	6.072	63	10277	0.563	ug/L #	86
47) Tetrachloroethene	7.979	164	9506	0.646	ug/L	91
49) Dibromochloromethane	7.976	129	9319	0.606	ug/L #	10
61) 1,2,3-Trichloropropane	11.249	75	10952	1.252	ug/L #	66
68) 1,2-Dibromo-3-chloropr...	12.255	75	225	0.121	ug/L #	6

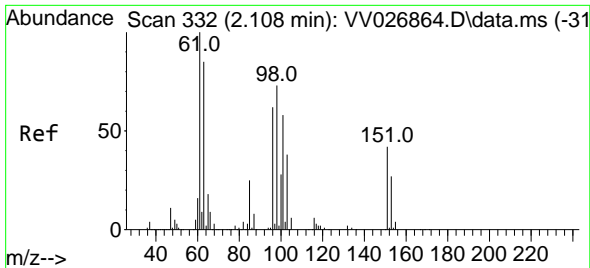
(#) = qualifier out of range (m) = manual integration (+) = signals summed

Data Path : Z:\voasrv\HPCHEM1\MSVOA_V\Data\VV072122\
 Data File : VV026870.D
 Acq On : 21 Jul 2022 13:15
 Operator : SY/MD
 Sample : N3802-04
 Misc : 25.0mL/MSVOA_V/WATER
 ALS Vial : 9 Sample Multiplier: 1

Instrument :
 MSVOA_V
 ClientSampleId :
 GBHW9

Quant Time: Jul 22 05:55:42 2022
 Quant Method : Z:\voasrv\HPCHEM1\MSVOA_V\Method\SFAMVTR071122WMA.M
 Quant Title : TRACE VOA SFAM1.0
 QLast Update : Fri Jul 22 05:53:14 2022
 Response via : Initial Calibration

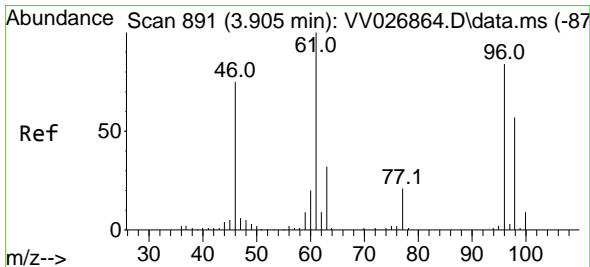
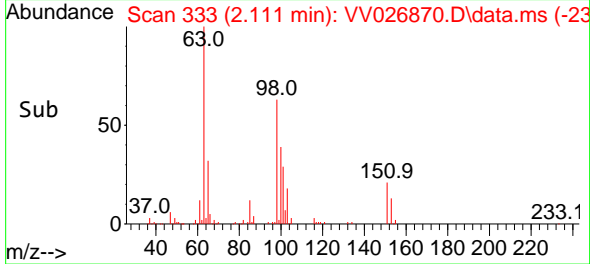
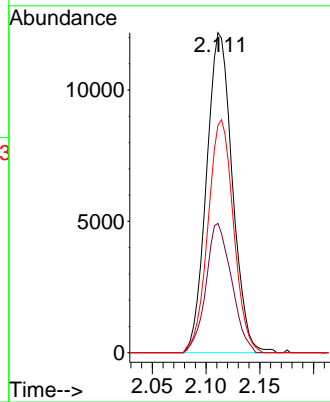
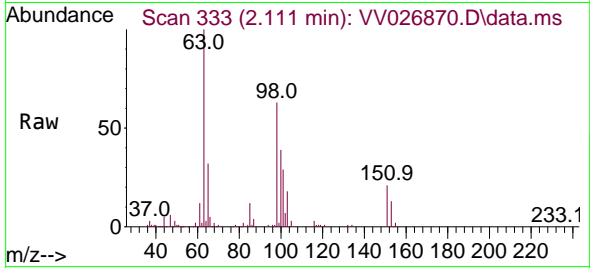




#10
 1,1,2-Trichloro-1,2,2-trifluoroethane
 Concen: 1.049 ug/L
 RT: 2.111 min Scan# 311
 Delta R.T. 0.003 min
 Lab File: VV026870.D
 Acq: 21 Jul 2022 13:15

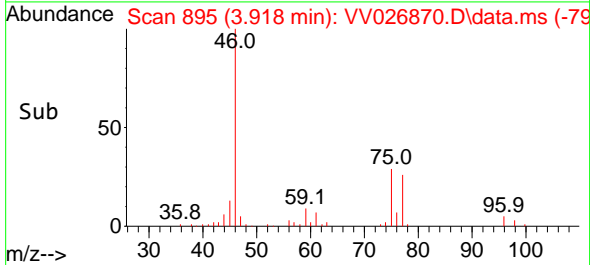
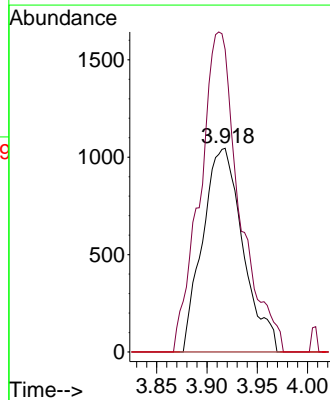
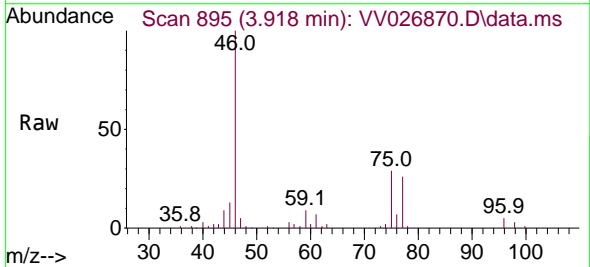
Instrument : MSVOA_V
 ClientSampleId : GBHW9

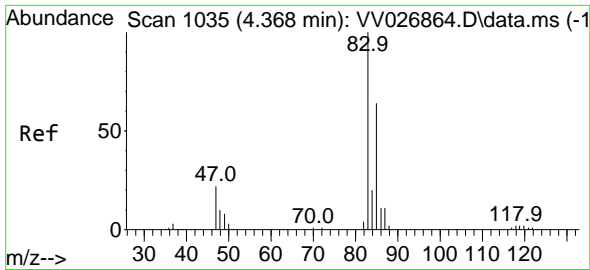
Tgt Ion	Resp	Lower	Upper
101	20376		
101	100		
85	40.0	35.0	52.4
151	72.0	56.7	85.1



#22
 cis-1,2-Dichloroethene
 Concen: 0.167 ug/L
 RT: 3.918 min Scan# 895
 Delta R.T. 0.013 min
 Lab File: VV026870.D
 Acq: 21 Jul 2022 13:15

Tgt Ion	Resp	Lower	Upper
96	2919		
96	100		
61	148.5	83.9	155.9
68	0.0	0.0	0.0

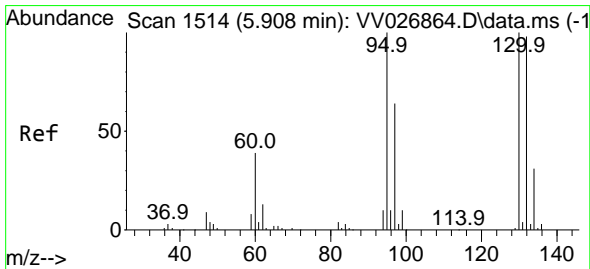
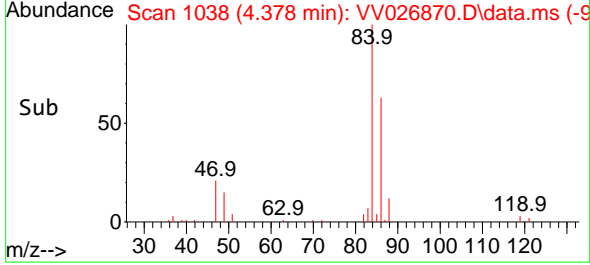
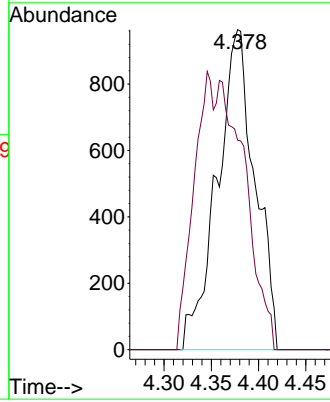
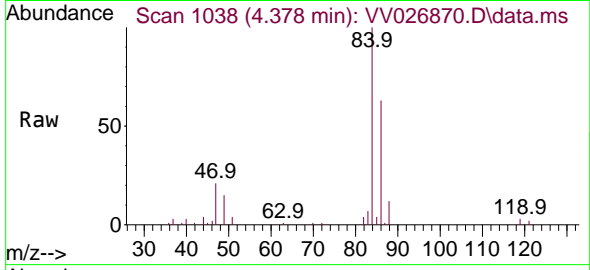




#25
 Chloroform
 Concen: 0.081 ug/L
 RT: 4.378 min Scan# 1038
 Delta R.T. 0.010 min
 Lab File: VV026870.D
 Acq: 21 Jul 2022 13:15

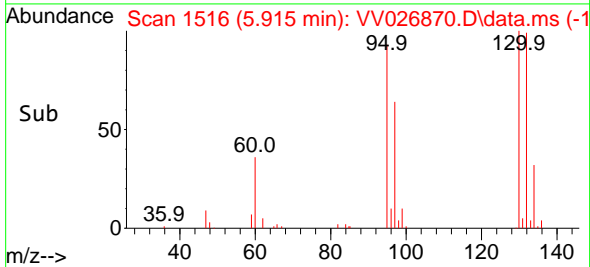
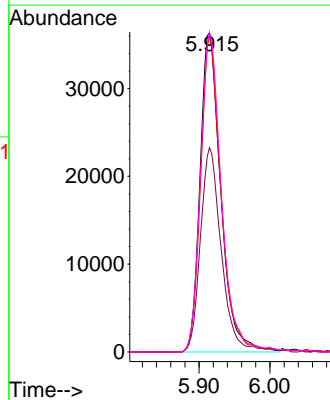
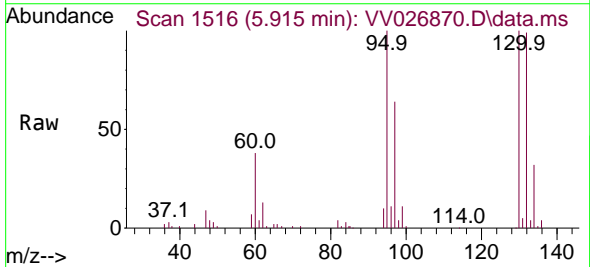
Instrument : MSVOA_V
 ClientSampleId : GBHW9

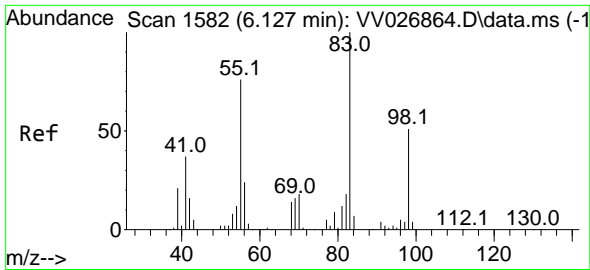
Tgt Ion: 83 Resp: 2679
 Ion Ratio Lower Upper
 83 100
 85 65.5 45.7 84.9



#34
 Trichloroethene
 Concen: 3.933 ug/L
 RT: 5.915 min Scan# 1516
 Delta R.T. 0.007 min
 Lab File: VV026870.D
 Acq: 21 Jul 2022 13:15

Tgt Ion: 95 Resp: 73792
 Ion Ratio Lower Upper
 95 100
 97 64.0 44.6 82.8
 132 99.2 70.2 130.4
 130 100.3 70.9 131.7

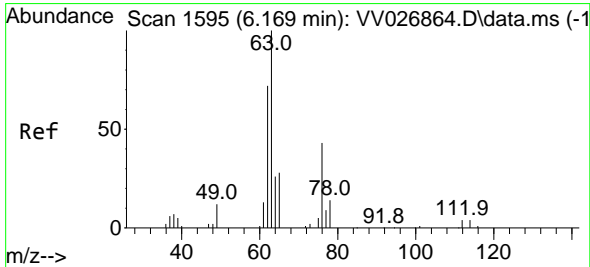
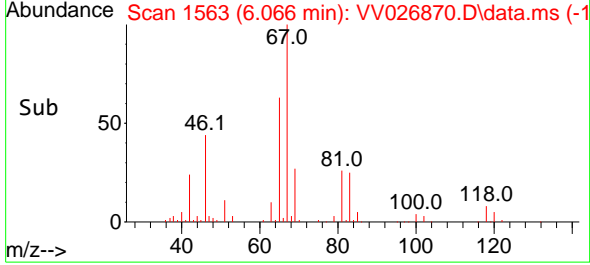
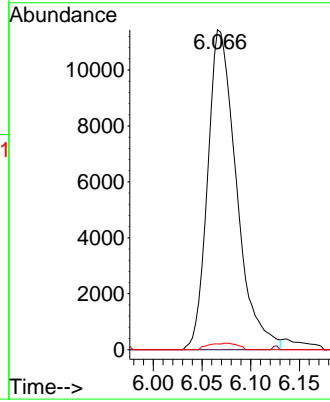
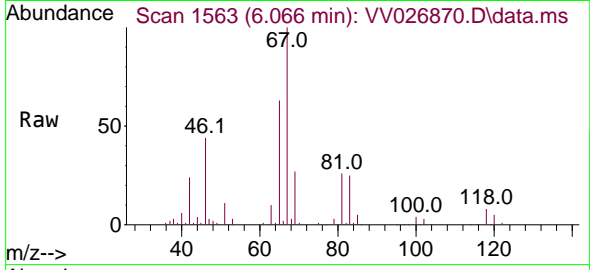




#35
 Methylcyclohexane
 Concen: 0.821 ug/L
 RT: 6.066 min Scan# 1563
 Delta R.T. -0.061 min
 Lab File: VV026870.D
 Acq: 21 Jul 2022 13:15

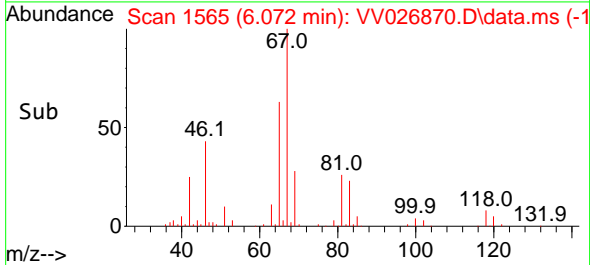
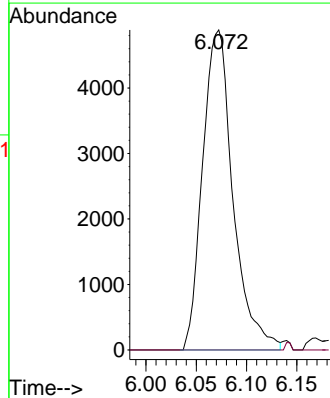
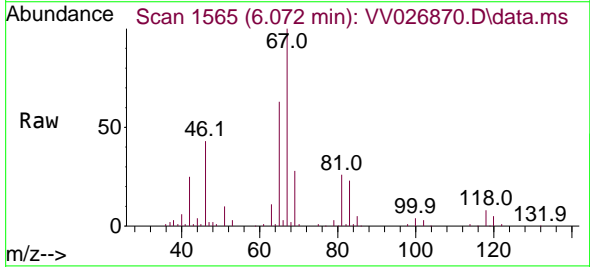
Instrument : MSVOA_V
 ClientSampleId : GBHW9

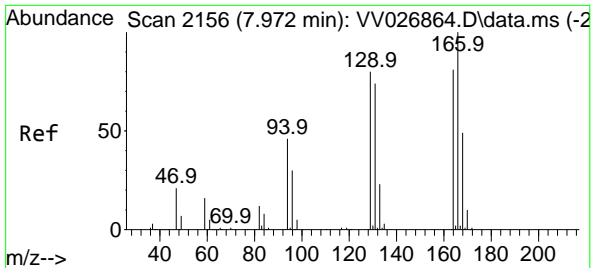
Tgt Ion: 83 Resp: 23514
 Ion Ratio Lower Upper
 83 100
 55 0.2 59.5 89.3#
 98 2.1 38.3 57.5#



#37
 1,2-Dichloropropane
 Concen: 0.563 ug/L
 RT: 6.072 min Scan# 1565
 Delta R.T. -0.096 min
 Lab File: VV026870.D
 Acq: 21 Jul 2022 13:15

Tgt Ion: 63 Resp: 10277
 Ion Ratio Lower Upper
 63 100
 112 0.4 4.2 6.2#



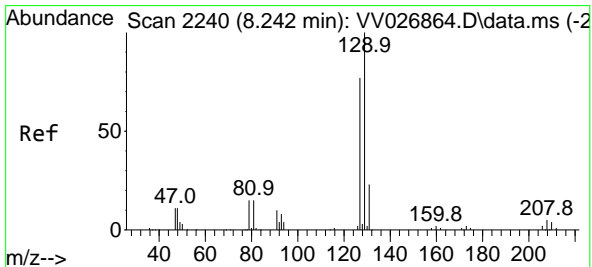
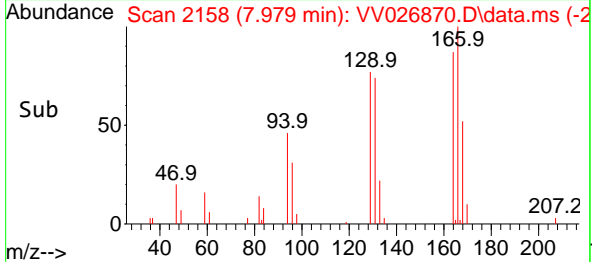
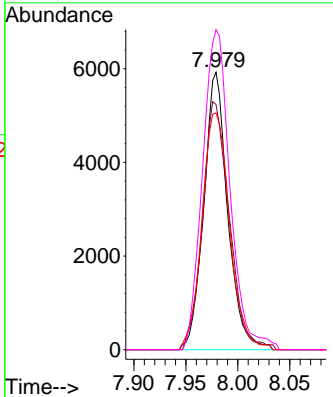
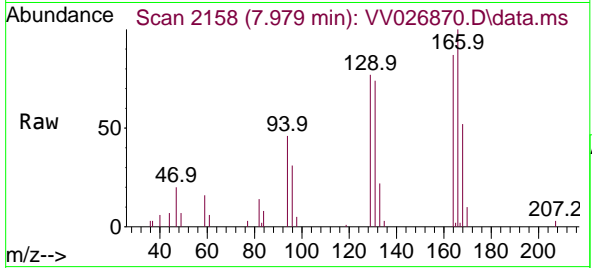


#47
 Tetrachloroethene
 Concen: 0.646 ug/L
 RT: 7.979 min Scan# 2157
 Delta R.T. 0.007 min
 Lab File: VV026870.D
 Acq: 21 Jul 2022 13:15

Instrument : MSVOA_V
 ClientSampleId : GBHW9

Tgt Ion:164 Resp: 9506

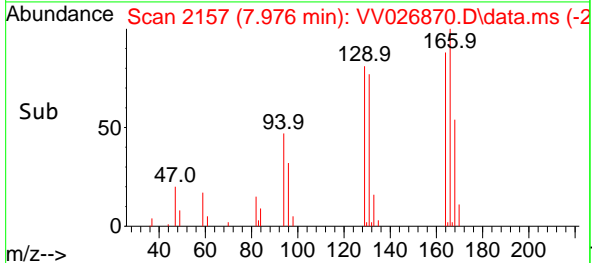
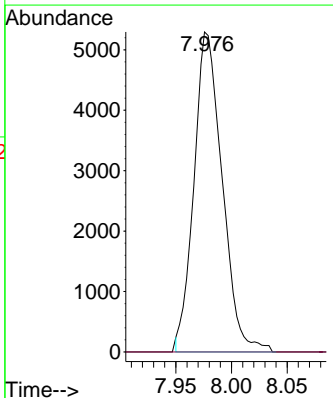
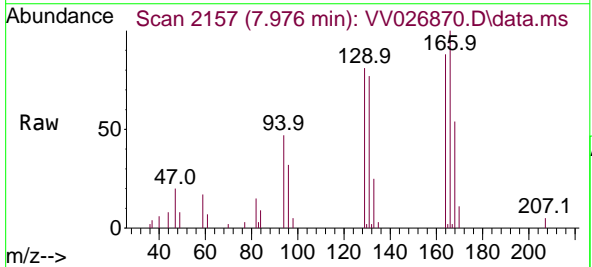
Ion	Ratio	Lower	Upper
164	100		
129	88.4	67.8	125.8
131	85.4	65.9	122.5
166	115.4	88.8	164.8

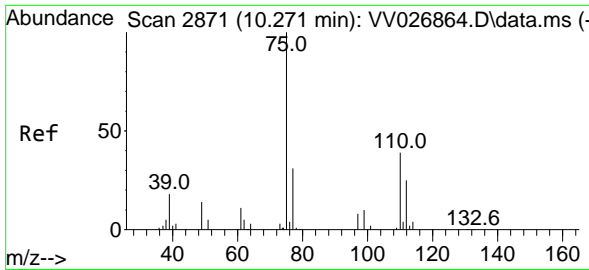


#49
 Dibromochloromethane
 Concen: 0.606 ug/L
 RT: 7.976 min Scan# 2157
 Delta R.T. -0.267 min
 Lab File: VV026870.D
 Acq: 21 Jul 2022 13:15

Tgt Ion:129 Resp: 9319

Ion	Ratio	Lower	Upper
129	100		
127	0.0	55.7	103.5#

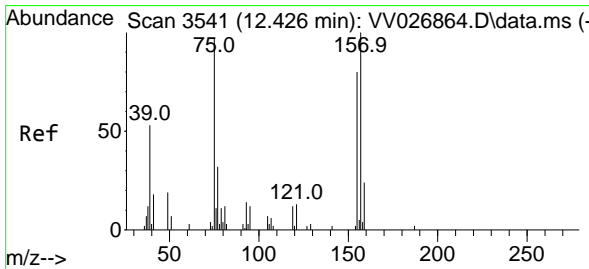
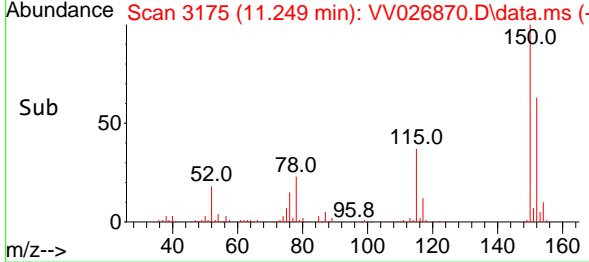
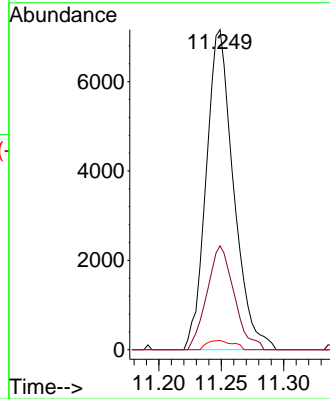
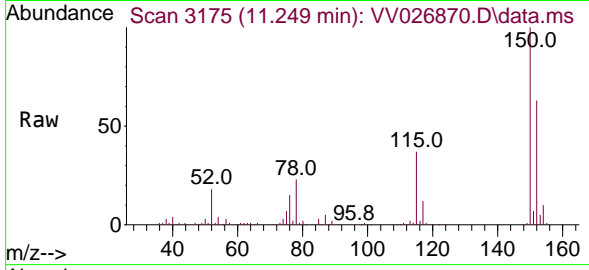




#61
 1,2,3-Trichloropropane
 Concen: 1.252 ug/L
 RT: 11.249 min Scan# 3175
 Delta R.T. 0.978 min
 Lab File: VV026870.D
 Acq: 21 Jul 2022 13:15

Instrument : MSVOA_V
 ClientSampleId : GBHW9

Tgt Ion	Resp	Lower	Upper
75	10952		
75	100		
77	32.2	25.4	38.0
110	2.7	31.8	47.6#



#68
 1,2-Dibromo-3-chloropropane
 Concen: 0.121 ug/L
 RT: 12.255 min Scan# 3488
 Delta R.T. -0.170 min
 Lab File: VV026870.D
 Acq: 21 Jul 2022 13:15

Tgt Ion	Resp	Lower	Upper
75	225		
75	100		
155	0.0	60.3	90.5#
157	0.0	78.2	117.4#

