

Data Path : Z:\voasrv\HPCHEM1\MSVOA\_V\Data\VW072222\  
 Data File : VW026898.D  
 Acq On : 22 Jul 2022 19:39  
 Operator : SY/MD  
 Sample : N3841-02  
 Misc : 5.0mL/MSVOA\_V/WATER  
 ALS Vial : 23 Sample Multiplier: 1

Instrument :  
 MSVOA\_V  
 ClientSampleId :

Quant Time: Jul 23 04:57:26 2022  
 Quant Method : Z:\voasrv\HPCHEM1\MSVOA\_V\Method\SFAMVLM072222WMA.M  
 Quant Title : VOC Analysis  
 QLast Update : Sat Jul 23 00:23:15 2022  
 Response via : Initial Calibration

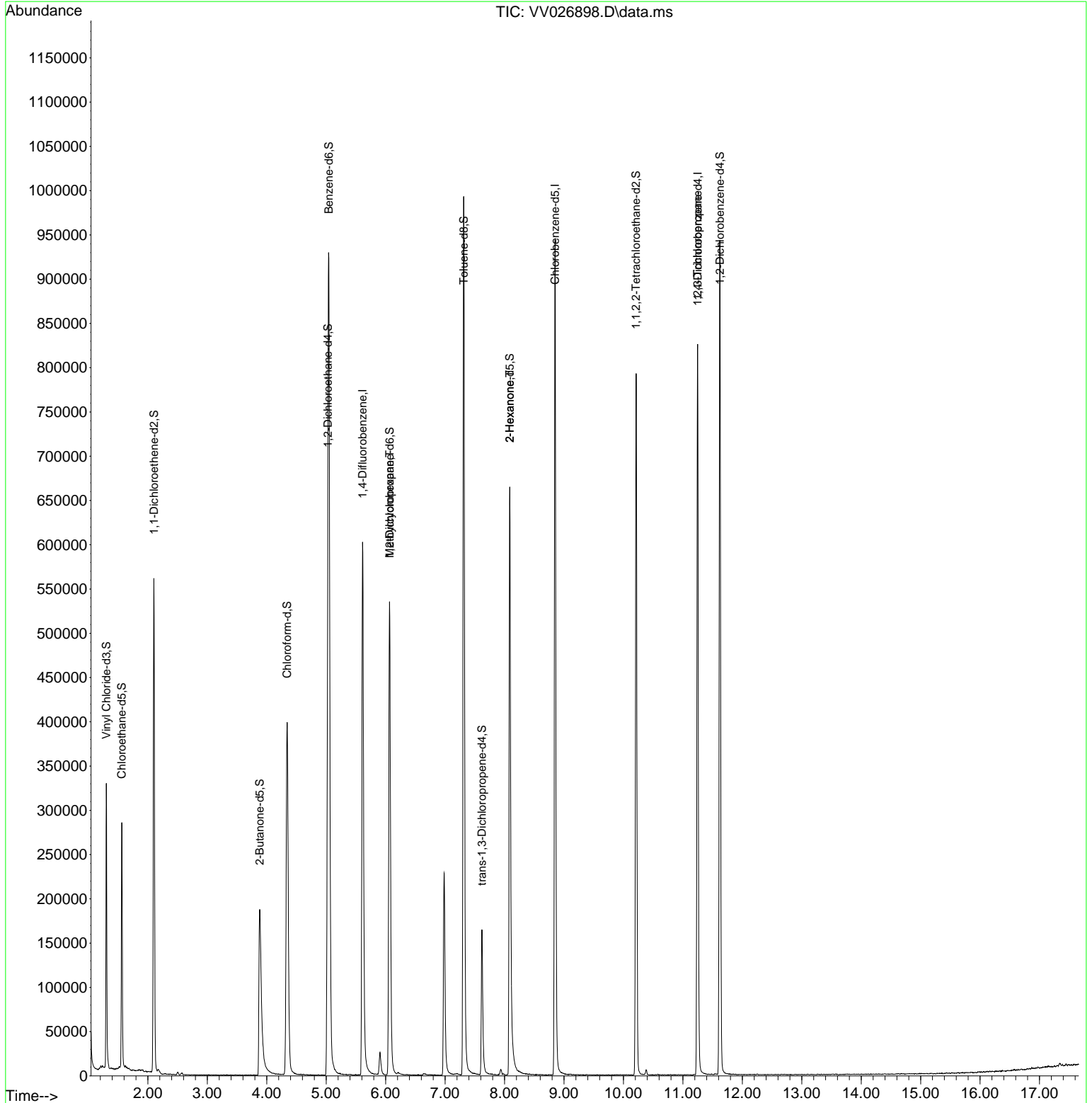
Compound	R.T.	QIon	Response	Conc	Units	Dev(Min)
Internal Standards						
1) 1,4-Difluorobenzene	5.613	114	539866	50.000	ug/L	0.00
28) Chlorobenzene-d5	8.850	117	539651	50.000	ug/L	0.00
58) 1,4-Dichlorobenzene-d4	11.249	152	224977	50.000	ug/L	0.00
System Monitoring Compounds						
4) Vinyl Chloride-d3	1.301	65	207724	45.876	ug/L	0.00
Spiked Amount	50.000	Range 60 - 135	Recovery	=	91.760%	
7) Chloroethane-d5	1.561	69	177877	48.560	ug/L	0.00
Spiked Amount	50.000	Range 70 - 130	Recovery	=	97.120%	
11) 1,1-Dichloroethene-d2	2.102	63	289168	35.498	ug/L	0.00
Spiked Amount	50.000	Range 60 - 125	Recovery	=	71.000%	
21) 2-Butanone-d5	3.883	46	332032	108.791	ug/L	0.00
Spiked Amount	100.000	Range 40 - 130	Recovery	=	108.790%	
24) Chloroform-d	4.343	84	432509	48.535	ug/L	0.00
Spiked Amount	50.000	Range 70 - 125	Recovery	=	97.080%	
26) 1,2-Dichloroethane-d4	5.027	65	263173	51.630	ug/L	0.00
Spiked Amount	50.000	Range 70 - 125	Recovery	=	103.260%	
32) Benzene-d6	5.044	84	849276	52.063	ug/L	0.00
Spiked Amount	50.000	Range 70 - 125	Recovery	=	104.120%	
36) 1,2-Dichloropropane-d6	6.066	67	278349	52.949	ug/L	0.00
Spiked Amount	50.000	Range 70 - 120	Recovery	=	105.900%	
41) Toluene-d8	7.314	98	681938	47.779	ug/L	0.00
Spiked Amount	50.000	Range 80 - 120	Recovery	=	95.560%	
43) trans-1,3-Dichloroprop...	7.619	79	101710	46.175	ug/L	0.00
Spiked Amount	50.000	Range 60 - 125	Recovery	=	92.340%	
47) 2-Hexanone-d5	8.088	63	240903	105.246	ug/L	0.00
Spiked Amount	100.000	Range 45 - 130	Recovery	=	105.250%	
56) 1,1,2,2-Tetrachloroeth...	10.214	84	392268	49.120	ug/L	0.00
Spiked Amount	50.000	Range 65 - 120	Recovery	=	98.240%	
66) 1,2-Dichlorobenzene-d4	11.622	152	249999	59.231	ug/L	0.00
Spiked Amount	50.000	Range 80 - 120	Recovery	=	118.460%	
Target Compounds						
35) Methylcyclohexane	6.066	83	68292	10.342	ug/L #	21
48) 2-Hexanone	8.088	43	25723	6.149	ug/L #	68
61) 1,2,3-Trichloropropane	11.246	75	25542	5.658	ug/L #	65

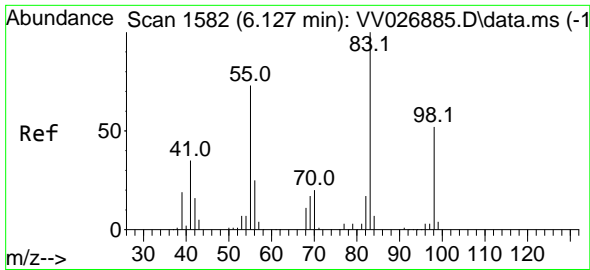
(#) = qualifier out of range (m) = manual integration (+) = signals summed

Data Path : Z:\voasrv\HPCHEM1\MSVOA\_V\Data\VV072222\  
 Data File : VV026898.D  
 Acq On : 22 Jul 2022 19:39  
 Operator : SY/MD  
 Sample : N3841-02  
 Misc : 5.0mL/MSVOA\_V/WATER  
 ALS Vial : 23 Sample Multiplier: 1

Instrument :  
 MSVOA\_V  
 ClientSampleId :

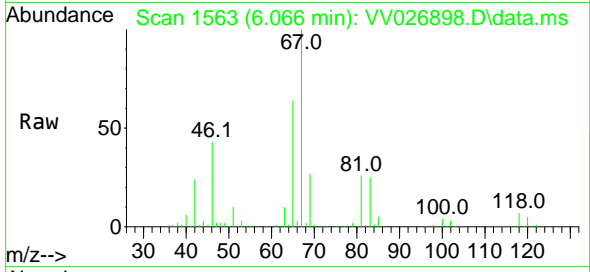
Quant Time: Jul 23 04:57:26 2022  
 Quant Method : Z:\voasrv\HPCHEM1\MSVOA\_V\Method\SFAMVLM072222WMA.M  
 Quant Title : VOC Analysis  
 QLast Update : Sat Jul 23 00:23:15 2022  
 Response via : Initial Calibration



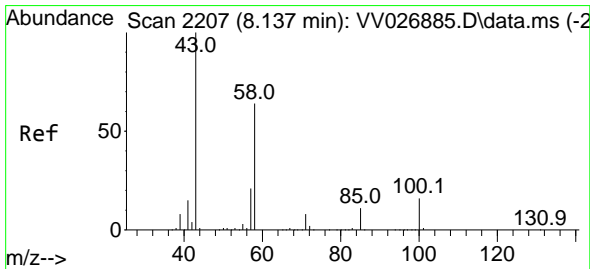
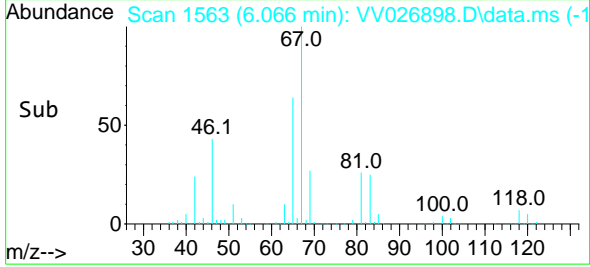
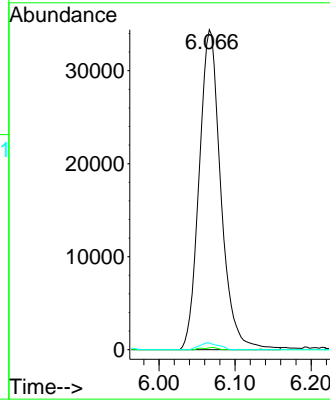


#35  
 Methylcyclohexane  
 Concen: 10.342 ug/L  
 RT: 6.066 min Scan# 11  
 Delta R.T. -0.061 min  
 Lab File: VV026898.D  
 Acq: 22 Jul 2022 19:39

Instrument : MSVOA\_V  
 ClientSampleId :

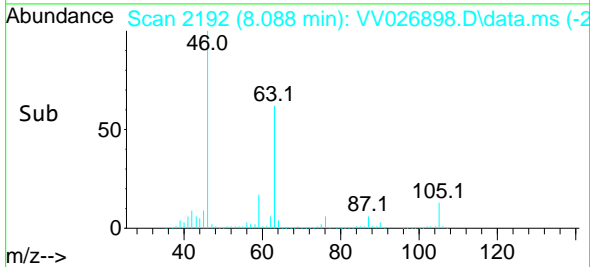
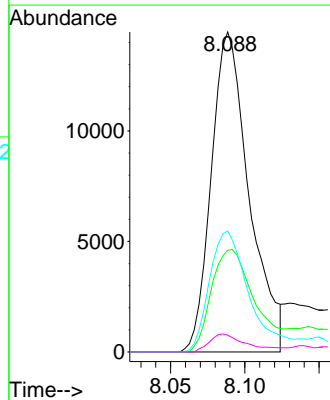
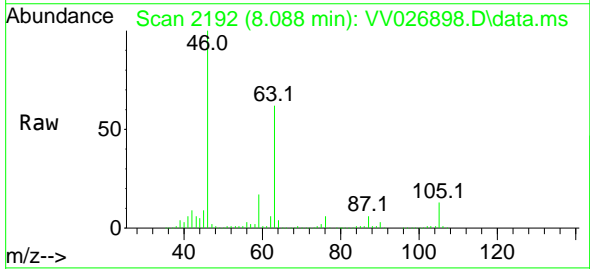


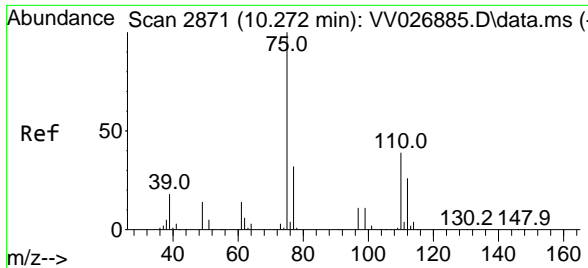
Tgt Ion: 83 Resp: 68292  
 Ion Ratio Lower Upper  
 83 100  
 55 0.3 57.4 86.2#  
 98 1.9 39.4 59.0#



#48  
 2-Hexanone  
 Concen: 6.149 ug/L  
 RT: 8.088 min Scan# 2192  
 Delta R.T. -0.048 min  
 Lab File: VV026898.D  
 Acq: 22 Jul 2022 19:39

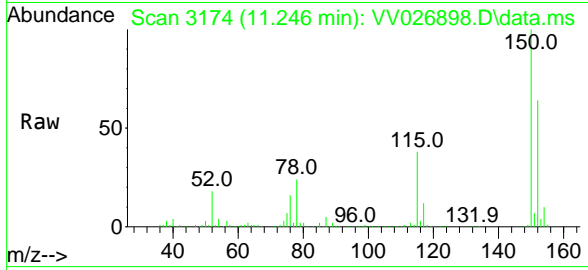
Tgt Ion: 43 Resp: 25723  
 Ion Ratio Lower Upper  
 43 100  
 58 36.9 48.8 73.2#  
 57 39.8 16.6 24.8#  
 100 5.8 11.6 17.4#





#61  
 1,2,3-Trichloropropane  
 Concen: 5.658 ug/L  
 RT: 11.246 min Scan# 31  
 Delta R.T. 0.974 min  
 Lab File: VV026898.D  
 Acq: 22 Jul 2022 19:39

Instrument :  
 MSVOA\_V  
 ClientSampleId :



Tgt Ion: 75 Resp: 25542

Ion	Ratio	Lower	Upper
75	100		
77	30.2	25.6	38.4
110	2.1	31.7	47.5#

