

Data Path : Z:\voasrv\HPCHEM1\MSVOA_V\Data\VV072523\
 Data File : VV031747.D
 Acq On : 25 Jul 2023 17:38
 Operator : SY/MD
 Sample : 03712-05
 Misc : 5.0mL/MSVOA_V/WATER
 ALS Vial : 20 Sample Multiplier: 1

Instrument :
 MSVOA_V
 ClientSampleId :
 BH2W9

Integration Parameters: LSCINT.P
 Integrator: RTE
 Smoothing : OFF
 Sampling : 1
 Start Thrs: 0.2
 Stop Thrs : 0
 Filtering: 5
 Min Area: 0 % of largest Peak
 Max Peaks: 100
 Peak Location: TOP

If leading or trailing edge < 100 prefer < Baseline drop else tangent >
 Peak separation: 5

Method : Z:\voasrv\HPCHEM1\MSVOA_V\Method\SFAMVLM072523WMA.M
 Title : VOC Analysis

Signal : TIC: VV031747.D\data.ms

peak #	R.T. min	first scan	max scan	last scan	PK TY	peak height	corr. area	corr. % max.	% of total
1	1.278	68	74	85	rBV	232781	245084	14.42%	2.022%
2	1.532	147	153	171	rVB	207986	254826	14.99%	2.103%
3	2.060	308	317	333	rBV	398843	589510	34.69%	4.865%
4	2.953	591	595	596	rBV4	1508	956	0.06%	0.008%
5	3.053	625	626	628	rVB2	850	248	0.01%	0.002%
6	3.066	628	630	635	rVB5	1142	882	0.05%	0.007%
7	3.101	635	641	644	rBV6	1999	2294	0.13%	0.019%
8	3.169	659	662	665	rBV4	1386	909	0.05%	0.008%
9	3.278	695	696	698	rBV	544	198	0.01%	0.002%
10	3.474	755	757	760	rVB4	1541	825	0.05%	0.007%
11	3.497	762	764	766	rBV2	838	598	0.04%	0.005%
12	3.519	769	771	775	rVB5	1225	783	0.05%	0.006%
13	3.548	775	780	784	rBV6	1721	1723	0.10%	0.014%
14	3.596	791	795	796	rBV3	1217	735	0.04%	0.006%
15	3.609	797	799	801	rBV3	1000	529	0.03%	0.004%
16	3.635	806	807	809	rBV2	1060	371	0.02%	0.003%
17	3.683	820	822	825	rVB3	1686	796	0.05%	0.007%
18	3.741	838	840	842	rBV2	1119	415	0.02%	0.003%
19	3.757	842	845	846	rBV3	1721	957	0.06%	0.008%
20	3.793	846	856	881	rBV	142973	408230	24.02%	3.369%
21	4.256	987	1000	1027	rVB2	287406	737237	43.38%	6.084%
22	4.802	1168	1170	1173	rBV3	1282	585	0.03%	0.005%
23	4.834	1178	1180	1183	rVB4	1371	566	0.03%	0.005%
24	4.867	1186	1190	1193	rBV6	855	856	0.05%	0.007%
25	4.963	1201	1220	1246	rBV2	631647	1699504	100.00%	14.024%
26	5.310	1326	1328	1333	rBV7	1447	1039	0.06%	0.009%
27	5.445	1368	1370	1372	rBV3	866	421	0.02%	0.003%
28	5.484	1379	1382	1384	rBV3	1689	1032	0.06%	0.009%
29	5.542	1387	1400	1423	rBV	392934	827040	48.66%	6.825%
30	5.754	1464	1466	1469	rBV4	1636	1074	0.06%	0.009%
31	5.995	1529	1541	1564	rBV	407047	831987	48.95%	6.865%
32	6.268	1624	1626	1628	rBV3	883	447	0.03%	0.004%
33	6.419	1669	1673	1674	rBV2	980	616	0.04%	0.005%
34	6.442	1676	1680	1682	rBV4	2106	1471	0.09%	0.012%
35	6.815	1794	1796	1797	rBV2	634	234	0.01%	0.002%
36	6.918	1817	1828	1846	rBV	167089	324569	19.10%	2.678%

Data Path : Z:\voasrv\HPCHEM1\MSVOA_V\Data\VV072523\
 Data File : VV031747.D
 Acq On : 25 Jul 2023 17:38
 Operator : SY/MD
 Sample : 03712-05
 Misc : 5.0mL/MSVOA_V/WATER
 ALS Vial : 20 Sample Multiplier: 1

Instrument :
 MSVOA_V
 ClientSampleId :
 BH2W9

Integration Parameters: LSCINT.P

Integrator: RTE
 Smoothing : OFF Filtering: 5
 Sampling : 1 Min Area: 0 % of largest Peak
 Start Thrs: 0.2 Max Peaks: 100
 Stop Thrs : 0 Peak Location: TOP

If leading or trailing edge < 100 prefer < Baseline drop else tangent >
 Peak separation: 5

Method : Z:\voasrv\HPCHEM1\MSVOA_V\Method\SFAMVLM072523WMA.M
 Title : VOC Analysis

37	7.249	1919	1931	1954	rBV	582166	1048403	61.69%	8.651%
38	7.558	2018	2027	2048	rBV	132022	238654	14.04%	1.969%
39	7.744	2083	2085	2087	rBV3	1990	1114	0.07%	0.009%
40	7.995	2161	2163	2164	rBV2	1514	654	0.04%	0.005%
41	8.030	2165	2174	2205	rVV	444072	888180	52.26%	7.329%
42	8.387	2283	2285	2287	rBV3	1416	828	0.05%	0.007%
43	8.616	2353	2356	2359	rBV5	1286	1221	0.07%	0.010%
44	8.683	2374	2377	2380	rVB3	1923	1084	0.06%	0.009%
45	8.792	2399	2411	2430	rBV	651410	1090283	64.15%	8.997%
46	9.149	2519	2522	2523	rBV3	1628	874	0.05%	0.007%
47	9.464	2617	2620	2621	rBV3	1282	742	0.04%	0.006%
48	9.644	2670	2676	2679	rBV8	2522	2777	0.16%	0.023%
49	9.715	2696	2698	2699	rBV2	1313	443	0.03%	0.004%
50	10.159	2824	2836	2860	rBV	584363	935955	55.07%	7.723%
51	10.384	2903	2906	2907	rBV2	1084	518	0.03%	0.004%
52	10.416	2914	2916	2918	rBV3	1943	990	0.06%	0.008%
53	10.545	2953	2956	2958	rBV3	1769	974	0.06%	0.008%
54	10.792	3031	3033	3036	rBV4	1688	831	0.05%	0.007%
55	11.191	3147	3157	3178	rVB	581069	904564	53.23%	7.464%
56	11.567	3264	3274	3295	rVB	674298	1058177	62.26%	8.732%
57	12.908	3689	3691	3693	rBV3	2140	932	0.05%	0.008%
58	13.853	3983	3985	3988	rVB3	1441	754	0.04%	0.006%

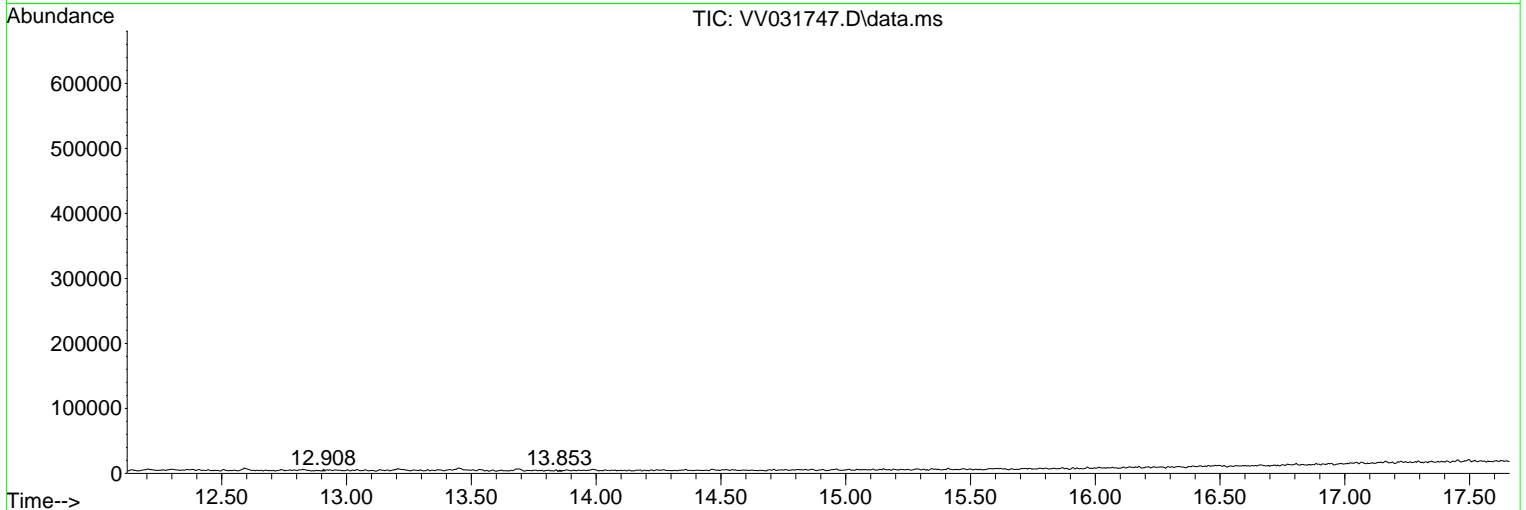
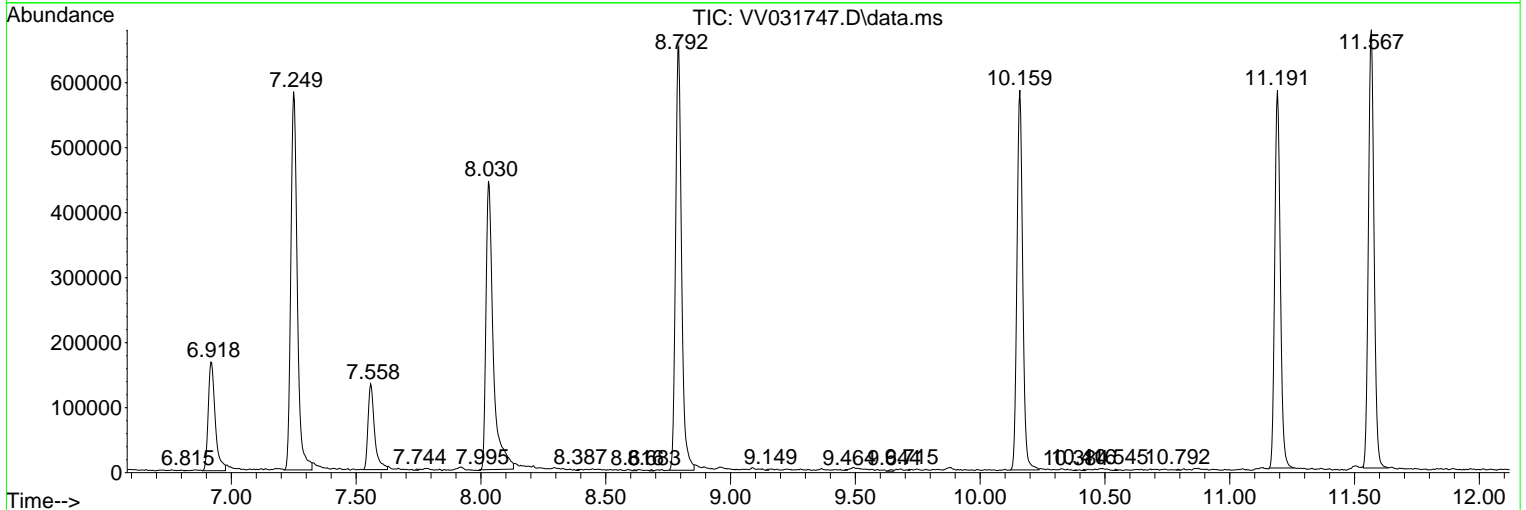
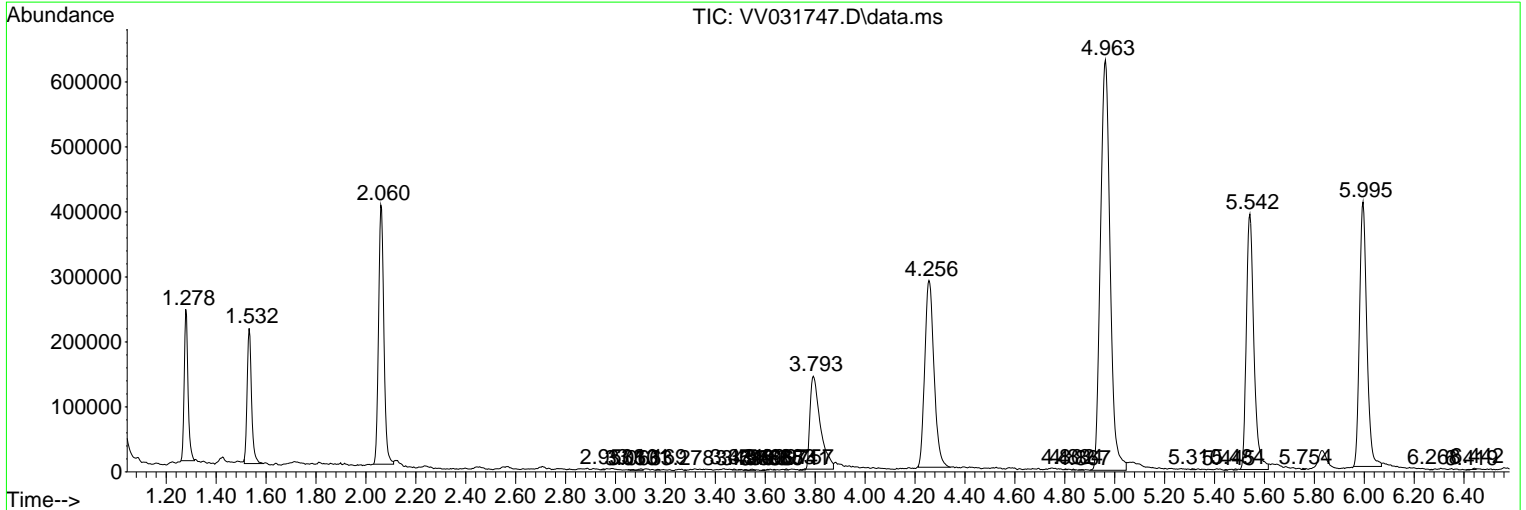
Sum of corrected areas: 12118499

Data Path : Z:\voasrv\HPCHEM1\MSVOA_V\Data\VV072523\
 Data File : VV031747.D
 Acq On : 25 Jul 2023 17:38
 Operator : SY/MD
 Sample : 03712-05
 Misc : 5.0mL/MSVOA_V/WATER
 ALS Vial : 20 Sample Multiplier: 1

Instrument :
 MSVOA_V
 ClientSampleId :
 BH2W9

Quant Method : Z:\voasrv\HPCHEM1\MSVOA_V\Method\SFAMVLM072523WMA.M
 Quant Title : VOC Analysis

TIC Library : C:\Database\NIST20.L
 TIC Integration Parameters: LSCINT.P



Library Search Compound Report

Data Path : Z:\voasrv\HPCHEM1\MSVOA_V\Data\VV072523\
Data File : VV031747.D
Acq On : 25 Jul 2023 17:38
Operator : SY/MD
Sample : 03712-05
Misc : 5.0mL/MSVOA_V/WATER
ALS Vial : 20 Sample Multiplier: 1

Instrument :
MSVOA_V
ClientSampleId :
BH2W9

Quant Method : Z:\voasrv\HPCHEM1\MSVOA_V\Method\SFAMVLM072523WMA.M
Quant Title : VOC Analysis

TIC Library : C:\Database\NIST20.L
TIC Integration Parameters: LSCINT.P

No Library Search Compounds Detected

Data Path : Z:\voasrv\HPCHEM1\MSVOA_V\Data\VV072523\
Data File : VV031747.D
Acq On : 25 Jul 2023 17:38
Operator : SY/MD
Sample : 03712-05
Misc : 5.0mL/MSVOA_V/WATER
ALS Vial : 20 Sample Multiplier: 1

Instrument :
MSVOA_V
ClientSampleId :
BH2W9

Quant Method : Z:\voasrv\HPCHEM1\MSVOA_V\Method\SFAMVLM072523WMA.M
Quant Title : VOC Analysis

TIC Library : C:\Database\NIST0.L
TIC Integration Parameters: LSCINT.P

TIC Top Hit name	RT	EstConc	Units	Response	--Internal Standard--		
					#	RT	Resp Conc
