

Data Path : Z:\VOASRV\HPCHEM1\MSVOA V\DATA\VV072820\
 Data File : VV017705.D
 Acq On : 28 Jul 2020 15:04
 Operator : SY/MD
 Sample : L3459-14
 Misc : 25.0mL/MSVOA V/WATER
 ALS Vial : 15 Sample Multiplier: 1

Instrument :
 MSVOA_V
 ClientSampled :
 VHBLK01

Integration Parameters: rteint.p
 Integrator: RTE
 Smoothing : ON Filtering: 5
 Sampling : 1 Min Area: 3 % of largest Peak
 Start Thrs: 0.1 Max Peaks: 100
 Stop Thrs : 0 Peak Location: TOP

If leading or trailing edge < 100 prefer < Baseline drop else tangent >
 Peak separation: 5

Method : Z:\VOASRV\HPCHEM1\MSVOA_V\METHOD\SOMVTR072320WMA.M
 Title : TRACE VOA SOM01.0

Signal : TIC

peak #	R.T. min	first scan	max scan	last scan	PK TY	peak height	corr. area	corr. % max.	% of total
1	1.315	62	70	77	rBV	57244	60242	13.31%	1.530%
2	1.579	142	152	165	rVB	47103	57266	12.65%	1.455%
3	2.122	309	321	335	rBV	111815	167981	37.11%	4.267%
4	2.524	437	446	453	rBV5	6803	9279	2.05%	0.236%
5	3.926	869	882	911	rBV3	47689	164155	36.27%	4.170%
6	4.376	1006	1022	1043	rBV	86401	222216	49.09%	5.645%
7	5.074	1221	1239	1260	rBV2	185308	452634	100.00%	11.498%
8	5.643	1401	1416	1433	rBV2	172940	352264	77.83%	8.949%
9	5.936	1497	1507	1517	rBV2	3837	7077	1.56%	0.180%
10	6.093	1538	1556	1573	rBV2	102546	215901	47.70%	5.485%
11	7.010	1829	1841	1857	rBV	52189	96165	21.25%	2.443%
12	7.338	1931	1943	1964	rBV	220252	380385	84.04%	9.663%
13	7.646	2029	2039	2057	rBV2	33040	58577	12.94%	1.488%
14	8.113	2171	2184	2213	rBV2	162716	327697	72.40%	8.324%
15	8.444	2279	2287	2299	rVB4	8264	15185	3.35%	0.386%
16	8.875	2408	2421	2444	rBV	264299	442375	97.73%	11.238%
17	10.238	2833	2845	2860	rBB	69920	108129	23.89%	2.747%
18	11.270	3153	3166	3184	rBV	270543	420973	93.01%	10.694%
19	11.646	3269	3283	3299	rBV	236530	372933	82.39%	9.474%
20	15.405	4444	4452	4460	rBV	3156	5131	1.13%	0.130%

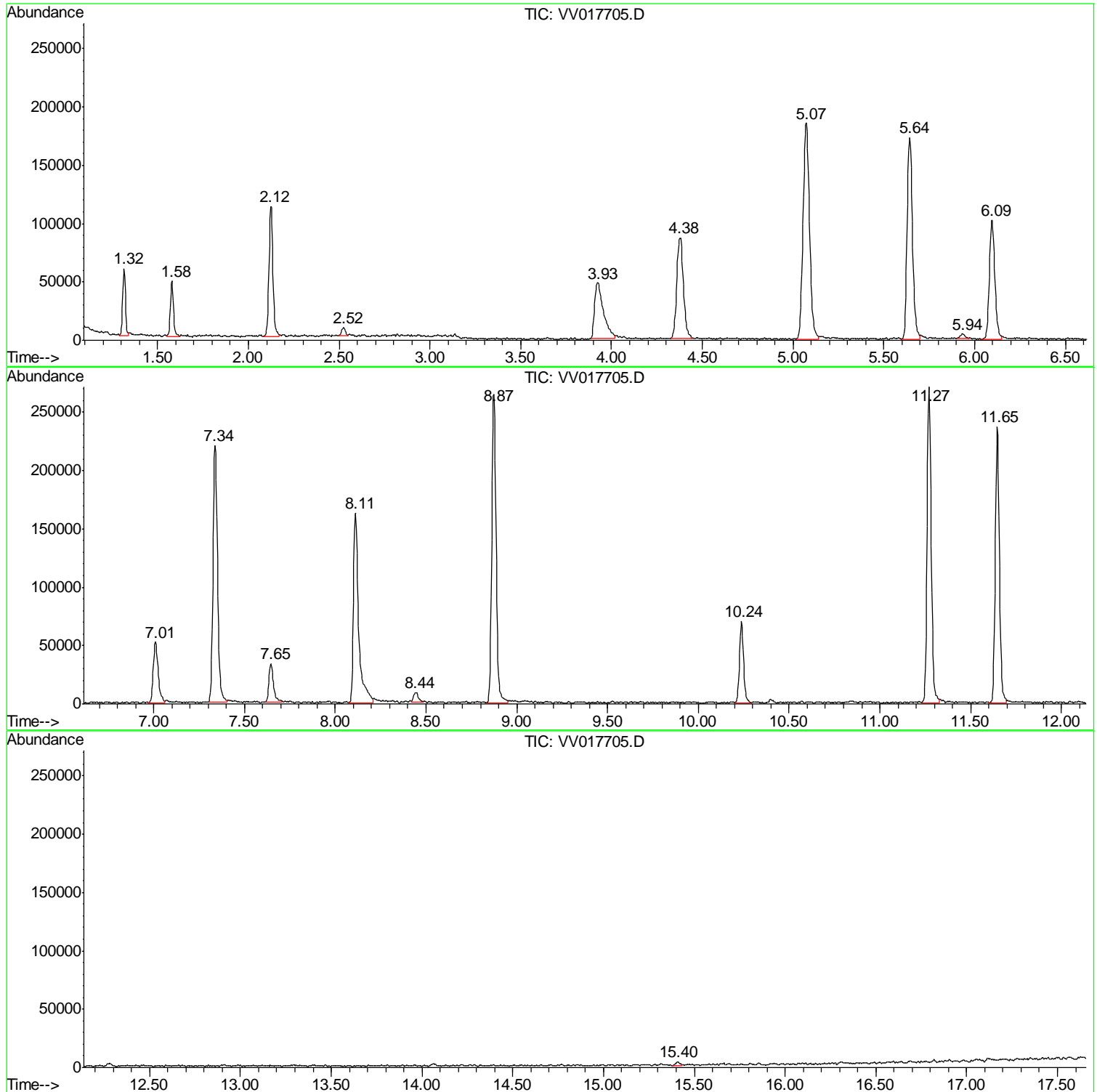
Sum of corrected areas: 3936565

Data Path : Z:\VOASRV\HPCHEM1\MSVOA V\DATA\VV072820\
Data File : VV017705.D
Acq On : 28 Jul 2020 15:04
Operator : SY/MD
Sample : L3459-14
Misc : 25.0mL/MSVOA V/WATER
ALS Vial : 15 Sample Multiplier: 1

Instrument :
MSVOA_V
ClientSampled :
VHBLK01

Quant Method : Z:\VOASRV\HPCHEM1\MSVOA_V\METHOD\SOMVTR072320WMA.M
Quant Title : TRACE VOA SOM01.0

TIC Library : C:\DATABASE\NIST11.L
TIC Integration Parameters: LSCINT.P



Data Path : Z:\VOASRV\HPCHEM1\MSVOA_V\DATA\VV072820\
Data File : VV017705.D
Acq On : 28 Jul 2020 15:04
Operator : SY/MD
Sample : L3459-14
Misc : 25.0mL/MSVOA_V/WATER
ALS Vial : 15 Sample Multiplier: 1

Instrument :
MSVOA_V
ClientSampleId :
VHBLK01

Quant Method : Z:\VOASRV\HPCHEM1\MSVOA_V\METHOD\SOMVTR072320WMA.M
Quant Title : TRACE VOA SOM01.0

TIC Library : C:\DATABASE\NIST11.L
TIC Integration Parameters: LSCINT.P

No Library Search Compounds Detected

Data Path : Z:\VOASRV\HPCHEM1\MSVOA_V\DATA\VV072820\
Data File : VV017705.D
Acq On : 28 Jul 2020 15:04
Operator : SY/MD
Sample : L3459-14
Misc : 25.0mL/MSVOA_V/WATER
ALS Vial : 15 Sample Multiplier: 1

Instrument :
MSVOA_V
ClientSampleId :
VHBLK01

Quant Method : Z:\VOASRV\HPCHEM1\MSVOA_V\METHOD\SOMVTR072320WMA.M
Quant Title : TRACE VOA SOM01.0

TIC Library : C:\DATABASE\NIST11.L
TIC Integration Parameters: LSCINT.P

TIC Top Hit name	RT	EstConc	Units	Response	--Internal Standard--			
					#	RT	Resp	Conc
