

Data Path : Z:\VOASRV\HPCHEM1\MSVOA V\DATA\VV072920\
 Data File : VV017720.D
 Acq On : 29 Jul 2020 10:38
 Operator : SY/MD
 Sample : VSTDCCC005
 Misc : 25.0mL/MSVOA V/WATER
 ALS Vial : 2 Sample Multiplier: 1

Instrument :
 MSVOA_V
 ClientSampled :

Quant Time: Jul 30 04:23:47 2020
 Quant Method : Z:\VOASRV\HPCHEM1\MSVOA_V\METHOD\SOMVTR072320WMA.M
 Quant Title : TRACE VOA SOM01.0
 QLast Update : Wed Jul 29 18:07:18 2020
 Response via : Initial Calibration

Internal Standards	R.T.	QIon	Response	Conc	Units	Dev(Min)
1) 1,4-Difluorobenzene	5.64	114	154203	5.00	ug/L	0.00
28) Chlorobenzene-d5	8.87	117	153097	5.00	ug/L	0.00
61) 1,4-Dichlorobenzene-d4	11.27	152	85283	5.00	ug/L	0.00

System Monitoring Compounds

4) Vinyl Chloride-d3	1.31	65	32251	4.38	ug/L	0.00
Spiked Amount	5.000	Range	40 - 130	Recovery	=	87.60%
7) Chloroethane-d5	1.58	69	28245	5.01	ug/L	0.00
Spiked Amount	5.000	Range	65 - 130	Recovery	=	100.20%
11) 1,1-Dichloroethene-d2	2.12	63	78114	4.73	ug/L	0.00
Spiked Amount	5.000	Range	60 - 125	Recovery	=	94.60%
20) 2-Butanone-d5	3.96	46	72490	41.15	ug/L	0.00
Spiked Amount	50.000	Range	40 - 130	Recovery	=	82.30%
24) Chloroform-d	4.37	84	86146	4.83	ug/L	0.00
Spiked Amount	5.000	Range	70 - 125	Recovery	=	96.60%
26) 1,2-Dichloroethane-d4	5.06	65	46277	5.03	ug/L	0.00
Spiked Amount	5.000	Range	70 - 130	Recovery	=	100.60%
32) Benzene-d6	5.07	84	143403	4.25	ug/L	0.00
Spiked Amount	5.000	Range	70 - 125	Recovery	=	85.00%
36) 1,2-Dichloropropane-d6	6.09	67	39794	4.24	ug/L	0.00
Spiked Amount	5.000	Range	60 - 140	Recovery	=	84.80%
41) Toluene-d8	7.33	98	139365	4.31	ug/L	0.00
Spiked Amount	5.000	Range	70 - 130	Recovery	=	86.20%
45) trans-1,3-Dichloropropene-	7.64	79	18184	4.28	ug/L	0.00
Spiked Amount	5.000	Range	55 - 130	Recovery	=	85.60%
48) 2-Hexanone-d5	8.11	63	55930	42.45	ug/L	0.00
Spiked Amount	50.000	Range	45 - 130	Recovery	=	84.90%
59) 1,1,2,2-Tetrachloroethane-	10.24	84	28677	4.39	ug/L	0.00
Spiked Amount	5.000	Range	65 - 120	Recovery	=	87.80%
65) 1,2-Dichlorobenzene-d4	11.65	152	58377	4.53	ug/L	0.00
Spiked Amount	5.000	Range	80 - 120	Recovery	=	90.60%

Target Compounds

Target Compounds	R.T.	QIon	Response	Conc	Units	Ovalue
2) Dichlorodifluoromethane	1.14	85	79960	4.732	ug/L	99
3) Chloromethane	1.25	50	48314	4.395	ug/L	97
5) Vinyl chloride	1.32	62	54304	4.929	ug/L	100
6) Bromomethane	1.53	94	30672	4.332	ug/L	99
8) Chloroethane	1.59	64	32500	5.110	ug/L	99
9) Trichlorofluoromethane	1.76	101	109165	5.540	ug/L	98
10) 1,1,2-Trichloro-1,2,2-trif	2.13	101	49020	5.327	ug/L	97
12) 1,1-Dichloroethene	2.13	96	43108	5.191	ug/L	88
13) Acetone	2.23	43	64780	46.978	ug/L	95
14) Carbon disulfide	2.31	76	128515	5.091	ug/L	98
15) Methyl Acetate	2.46	43	12576	4.687	ug/L	96
16) Methylene chloride	2.52	84	46652	5.049	ug/L	95
17) Methyl tert-butyl Ether	2.79	73	109447	5.142	ug/L	99
18) trans-1,2-Dichloroethene	2.77	96	47770	5.280	ug/L	96
19) 1,1-Dichloroethane	3.21	63	90746	4.769	ug/L	99
21) 2-Butanone	4.03	43	99916	42.911	ug/L	99
22) cis-1,2-Dichloroethene	3.93	96	56034	4.918	ug/L	99

Data Path : Z:\VOASRV\HPCHEM1\MSVOA V\DATA\VV072920\
 Data File : VV017720.D
 Acq On : 29 Jul 2020 10:38
 Operator : SY/MD
 Sample : VSTDCCC005
 Misc : 25.0mL/MSVOA V/WATER
 ALS Vial : 2 Sample Multiplier: 1

Instrument :
 MSVOA_V
 ClientSampleId :

Quant Time: Jul 30 04:23:47 2020
 Quant Method : Z:\VOASRV\HPCHEM1\MSVOA_V\METHOD\SOMVTR072320WMA.M
 Quant Title : TRACE VOA SOM01.0
 QLast Update : Wed Jul 29 18:07:18 2020
 Response via : Initial Calibration

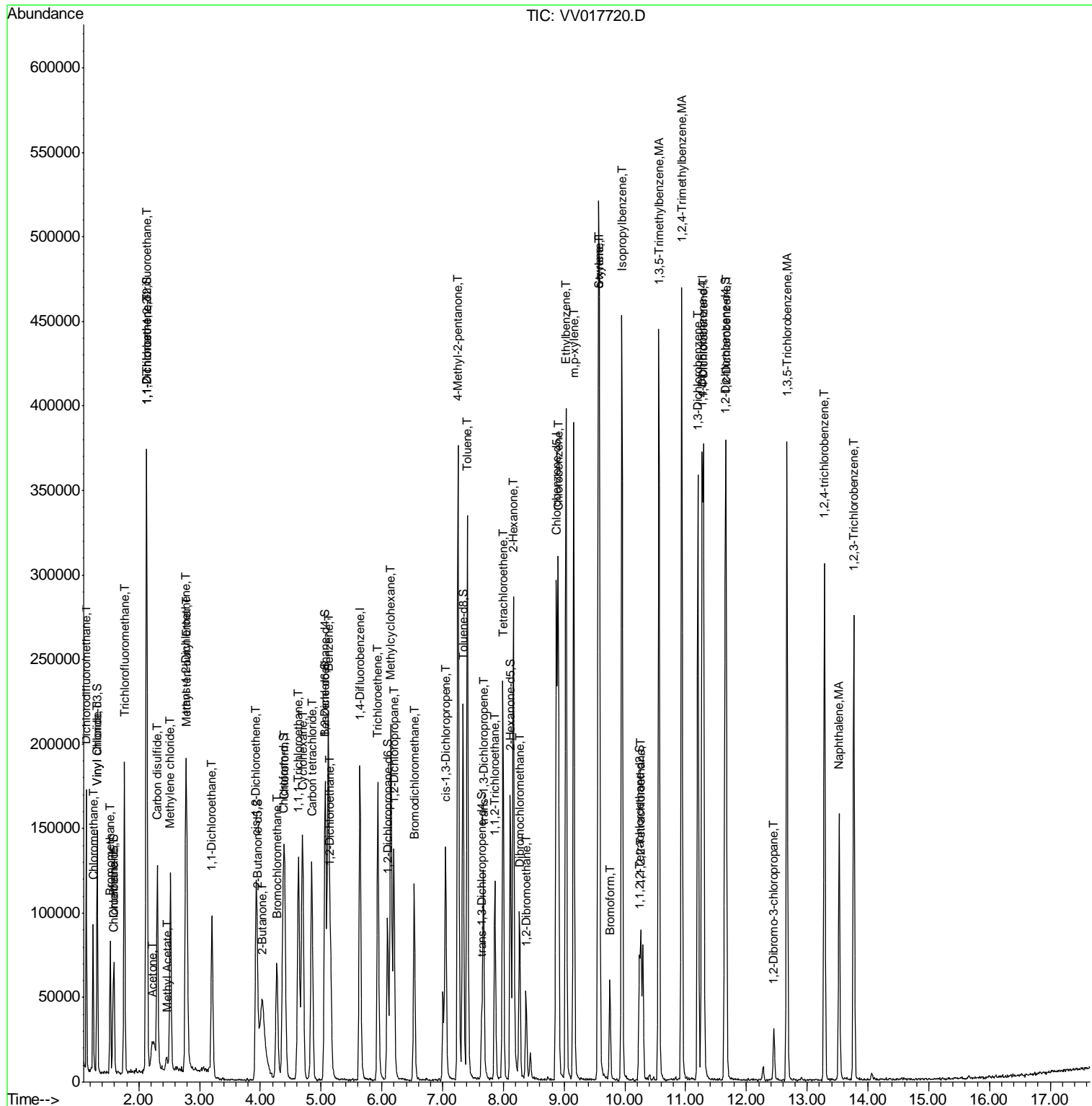
Internal Standards	R.T.	QIon	Response	Conc	Units	Dev(Min)
23) Bromochloromethane	4.27	128	26053	4.962	ug/L	90
25) Chloroform	4.40	83	112159	5.252	ug/L	94
27) 1,2-Dichloroethane	5.15	62	71638	5.173	ug/L	99
29) 1,1,1-Trichloroethane	4.63	97	107197	5.005	ug/L	98
30) Cyclohexane	4.69	56	72253	4.257	ug/L	93
31) Carbon tetrachloride	4.85	117	97334	5.109	ug/L	98
33) Benzene	5.12	78	205459	4.741	ug/L	100
34) Trichloroethene	5.93	95	58772	4.855	ug/L	97
35) Methylcyclohexane	6.15	83	83200	4.544	ug/L	96
37) 1,2-Dichloropropane	6.20	63	42617	4.185	ug/L	98
38) Bromodichloromethane	6.53	83	74777	4.991	ug/L	98
39) cis-1,3-Dichloropropene	7.05	75	73632	4.794	ug/L	100
40) 4-Methyl-2-pentanone	7.25	43	237712	42.570	ug/L	98
42) Toluene	7.41	91	235167	4.975	ug/L	97
43) 1,3,5-Trimethylbenzene	10.56	105	231126	5.236	ug/L	98
44) 1,2,4-Trimethylbenzene	10.94	105	240931	5.343	ug/L	98
46) trans-1,3-Dichloropropene	7.67	75	64635	4.687	ug/L	98
47) 1,1,2-Trichloroethane	7.86	97	33997	4.402	ug/L	90
49) Tetrachloroethene	7.99	164	52048	4.877	ug/L	99
50) 2-Hexanone	8.16	43	175232	44.350	ug/L	98
51) Dibromochloromethane	8.27	129	50761	5.164	ug/L	89
52) 1,2-Dibromoethane	8.38	107	33311	4.570	ug/L	99
53) Chlorobenzene	8.90	112	153495	4.870	ug/L	98
54) Ethylbenzene	9.03	91	262776	4.965	ug/L	99
55) m,p-xylene	9.16	106	103991	5.217	ug/L	97
56) o-xylene	9.56	106	98309	5.082	ug/L	99
57) Styrene	9.58	104	168544	5.222	ug/L	99
58) Isopropylbenzene	9.95	105	271920	5.096	ug/L	99
60) 1,1,2,2-Tetrachloroethane	10.26	83	36516	4.339	ug/L	98
62) Bromoform	9.75	173	26801	4.910	ug/L	100
63) 1,3-Dichlorobenzene	11.20	146	139883	5.094	ug/L	99
64) 1,4-Dichlorobenzene	11.29	146	139749	5.072	ug/L	100
66) 1,2-Dichlorobenzene	11.67	146	126733	5.067	ug/L	98
67) 1,2-Dibromo-3-chloropropan	12.45	75	7782	4.975	ug/L	95
68) 1,3,5-Trichlorobenzene	12.67	180	114004	5.111	ug/L	99
69) 1,2,4-trichlorobenzene	13.29	180	95398	5.113	ug/L	99
70) Naphthalene	13.53	128	121222	4.660	ug/L	99
71) 1,2,3-Trichlorobenzene	13.77	180	77831	4.708	ug/L	93

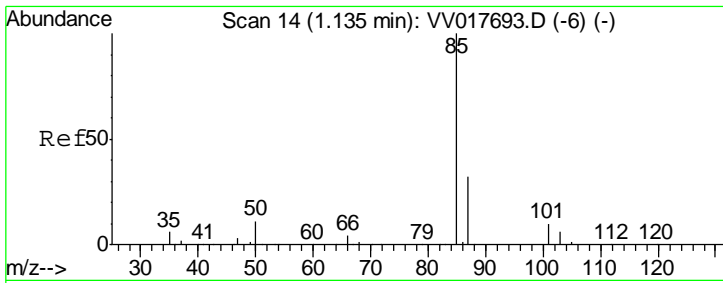
(#) = qualifier out of range (m) = manual integration (+) = signals summed

Data Path : Z:\VOASRV\HPCHEM1\MSVOA V\DATA\VV072920\
 Data File : VV017720.D
 Acq On : 29 Jul 2020 10:38
 Operator : SY/MD
 Sample : VSTDCCC005
 Misc : 25.0mL/MSVOA V/WATER
 ALS Vial : 2 Sample Multiplier: 1

Instrument :
 MSVOA_V
 Client Sampled :

Quant Time: Jul 30 04:23:47 2020
 Quant Method : Z:\VOASRV\HPCHEM1\MSVOA_V\METHOD\SOMVTR072320WMA.M
 Quant Title : TRACE VOA SOM01.0
 QLast Update : Wed Jul 29 18:07:18 2020
 Response via : Initial Calibration

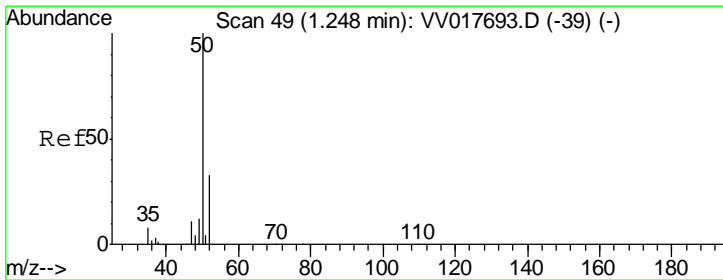
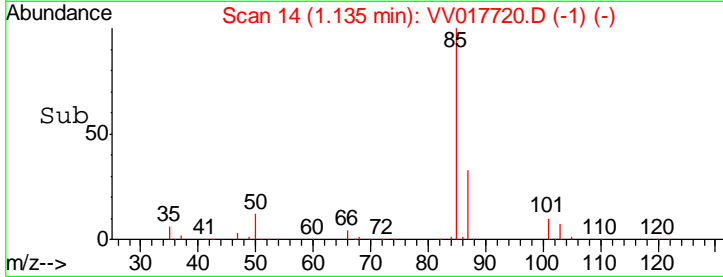
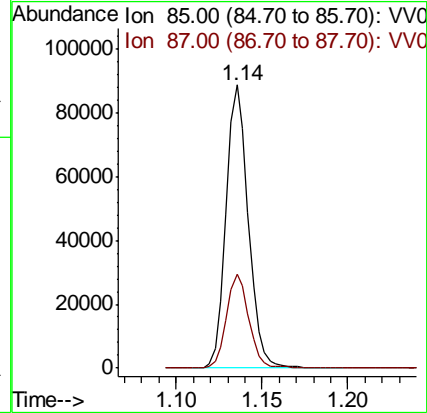
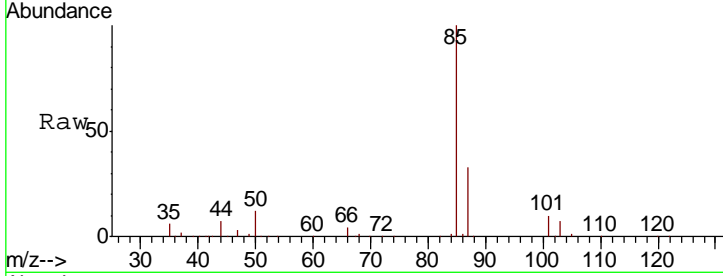




#2
 Dichlorodifluoromethane
 Concen: 4.732 ug/L
 RT: 1.14 min Scan# 14
 Delta R.T. 0.00 min
 Lab File: VV017720.D
 Acq: 29 Jul 2020 10:38

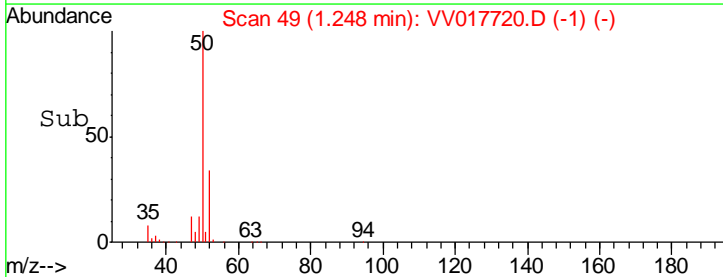
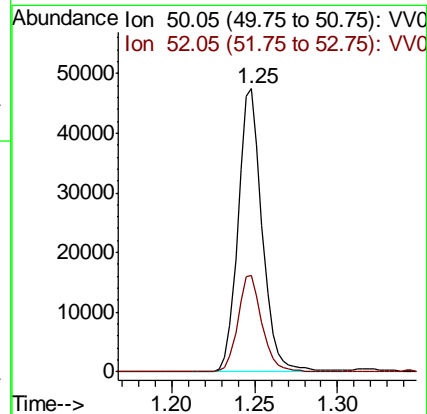
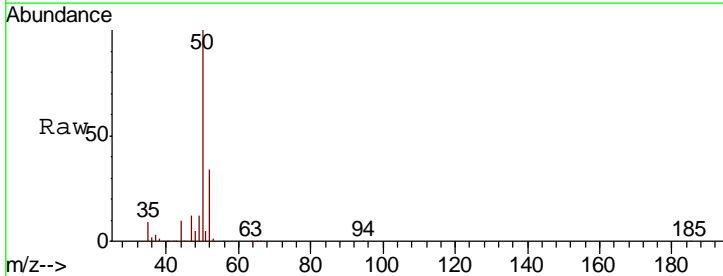
Instrument :
 MSVOA_V
 ClientSampled :

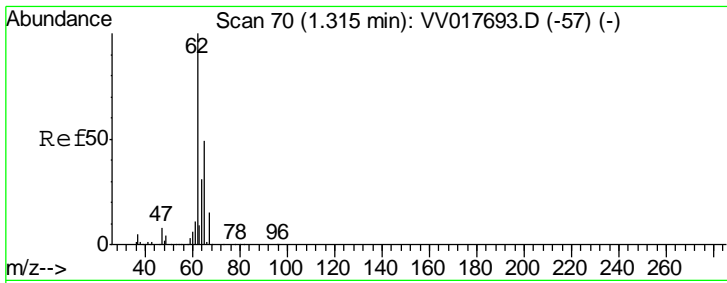
Tgt Ion: 85 Resp: 79960
 Ion Ratio Lower Upper
 85 100
 87 33.4 26.4 39.6



#3
 Chloromethane
 Concen: 4.395 ug/L
 RT: 1.25 min Scan# 49
 Delta R.T. 0.00 min
 Lab File: VV017720.D
 Acq: 29 Jul 2020 10:38

Tgt Ion: 50 Resp: 48314
 Ion Ratio Lower Upper
 50 100
 52 34.1 25.1 46.5

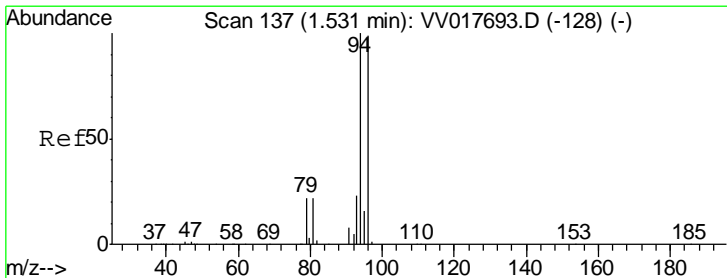
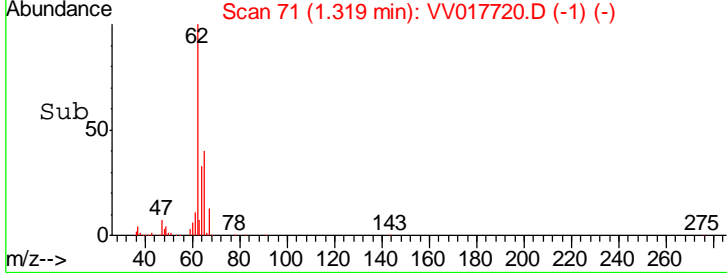
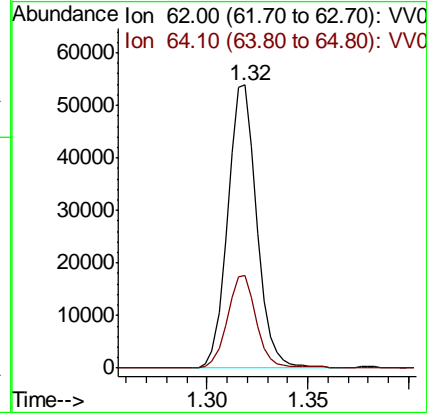
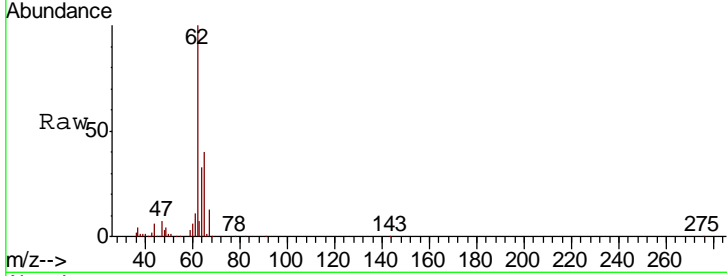




#5
 Vinyl chloride
 Concen: 4.929 ug/L
 RT: 1.32 min Scan# 71
 Delta R.T. 0.00 min
 Lab File: VV017720.D
 Acq: 29 Jul 2020 10:38

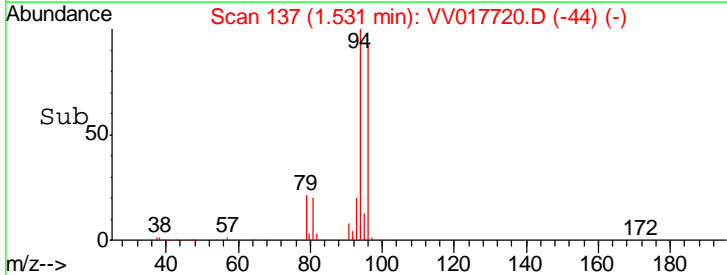
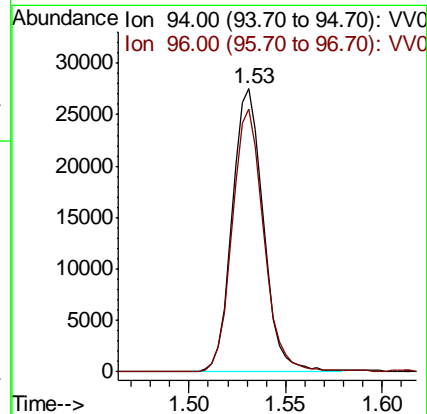
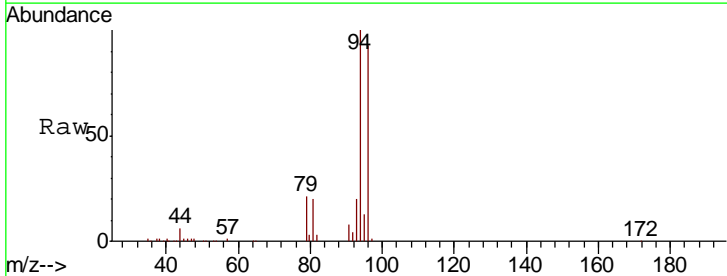
Instrument : MSVOA_V
 ClientSampled :

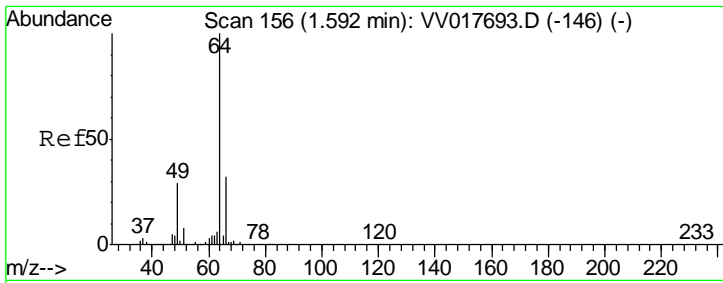
Tgt Ion	Resp	Lower	Upper
62	100		
64	32.7	23.0	42.8



#6
 Bromomethane
 Concen: 4.332 ug/L
 RT: 1.53 min Scan# 137
 Delta R.T. 0.00 min
 Lab File: VV017720.D
 Acq: 29 Jul 2020 10:38

Tgt Ion	Resp	Lower	Upper
94	100		
96	93.1	65.9	122.5

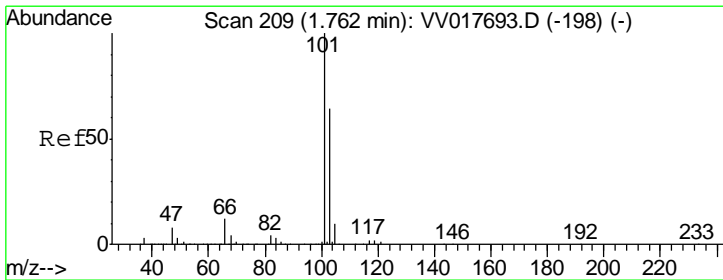
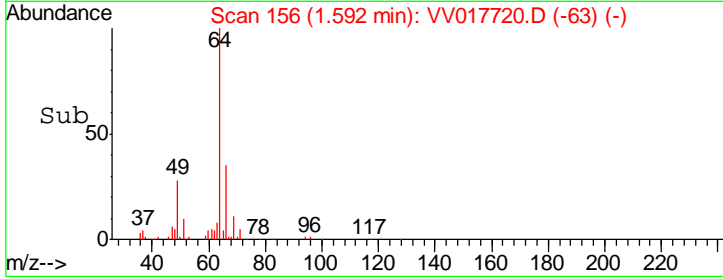
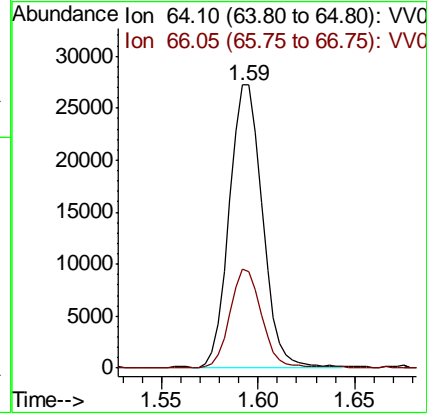
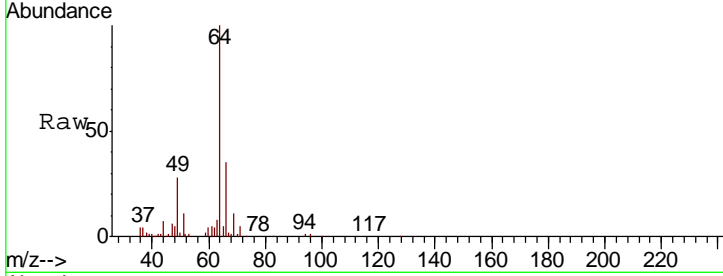




#8
 Chloroethane
 Concen: 5.110 ug/L
 RT: 1.59 min Scan# 156
 Delta R.T. 0.00 min
 Lab File: VV017720.D
 Acq: 29 Jul 2020 10:38

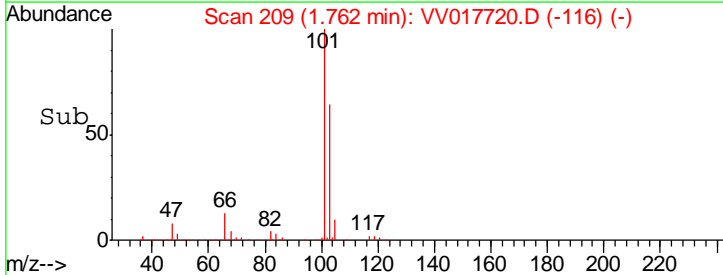
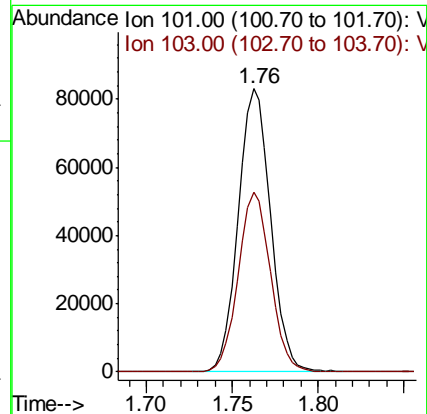
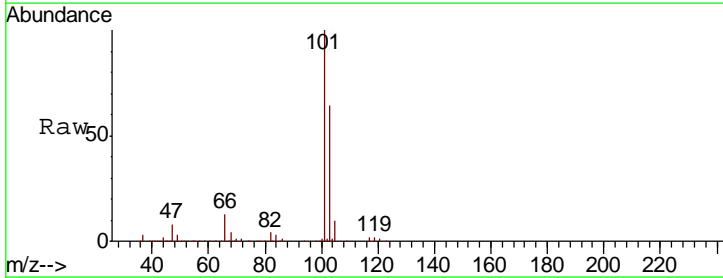
Instrument :
 MSVOA_V
 ClientSampled :

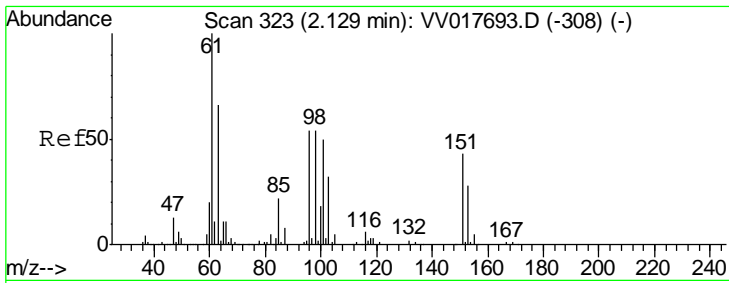
Tgt Ion	Resp	Lower	Upper
64	100		
66	35.0	24.0	44.6



#9
 Trichlorofluoromethane
 Concen: 5.540 ug/L
 RT: 1.76 min Scan# 209
 Delta R.T. 0.00 min
 Lab File: VV017720.D
 Acq: 29 Jul 2020 10:38

Tgt Ion	Resp	Lower	Upper
101	100		
103	63.3	51.7	77.5

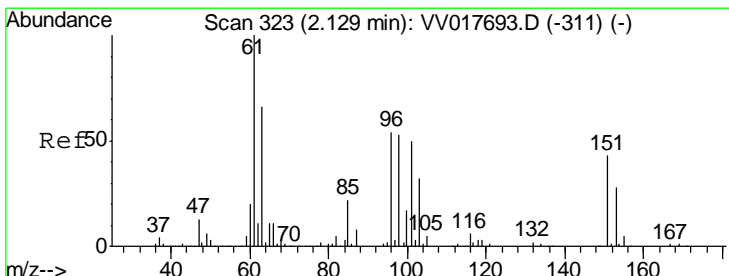
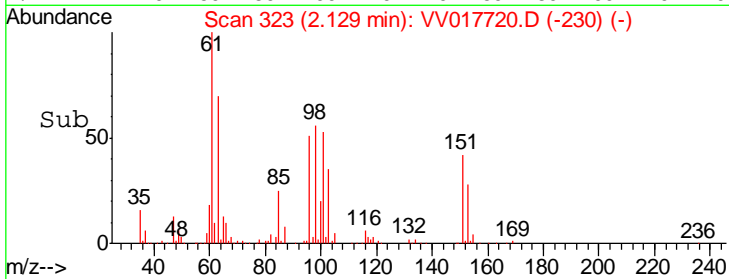
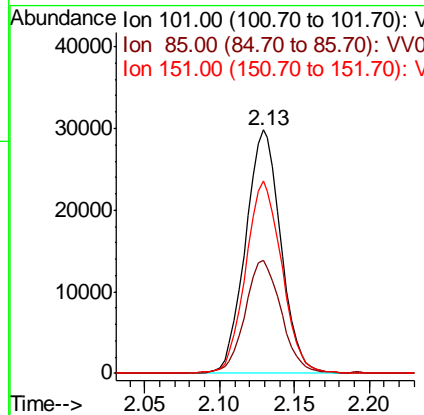
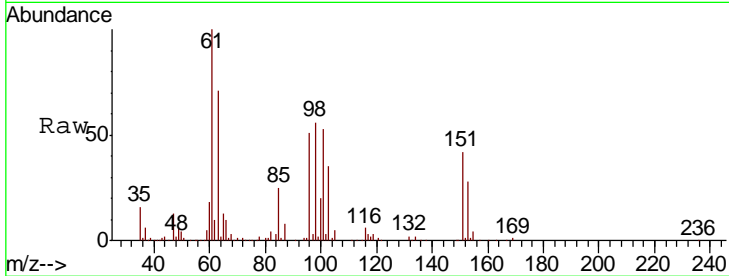




#10
 1,1,2-Trichloro-1,2,2-trifluoroethane
 Concen: 5.327 ug/L
 RT: 2.13 min Scan# 323
 Delta R.T. 0.00 min
 Lab File: VV017720.D
 Acq: 29 Jul 2020 10:38

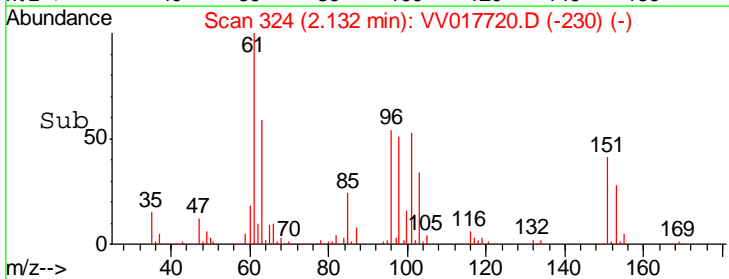
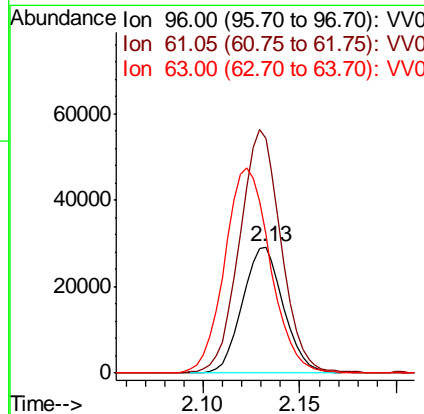
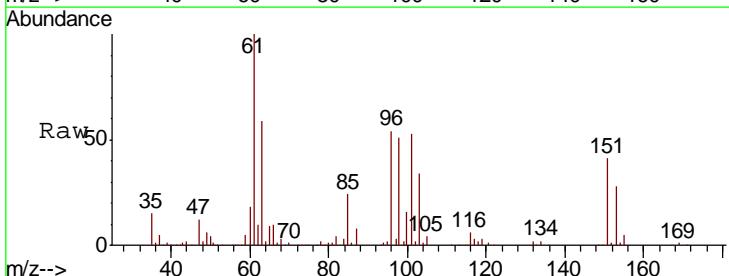
Instrument :
 MSVOA_V
 ClientSampled :

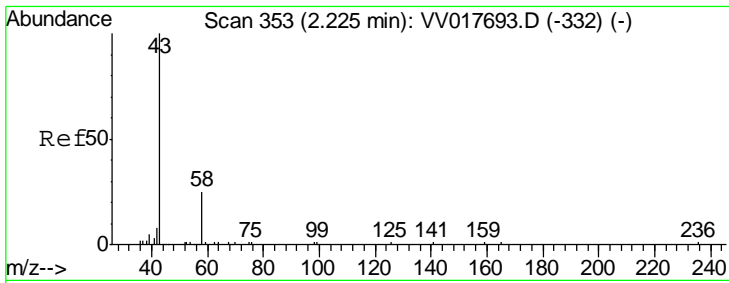
Tgt Ion	Resp	Lower	Upper
101	49020		
101	100		
85	47.6	34.6	51.8
151	80.7	63.5	95.3



#12
 1,1-Dichloroethene
 Concen: 5.191 ug/L
 RT: 2.13 min Scan# 324
 Delta R.T. 0.00 min
 Lab File: VV017720.D
 Acq: 29 Jul 2020 10:38

Tgt Ion	Resp	Lower	Upper
96	43108		
96	100		
61	186.0	123.1	228.7
63	109.8	91.2	169.4

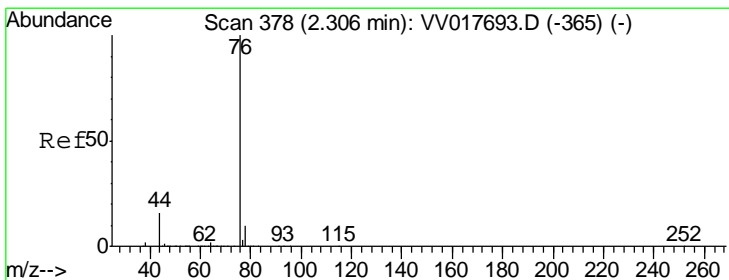
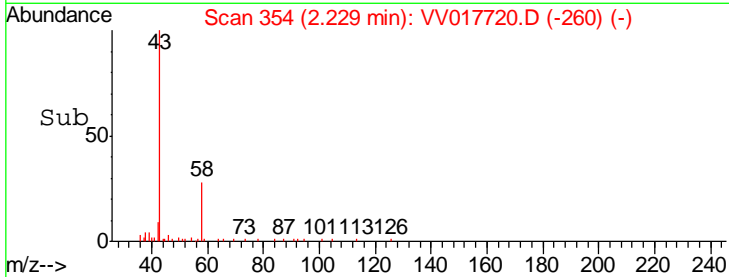
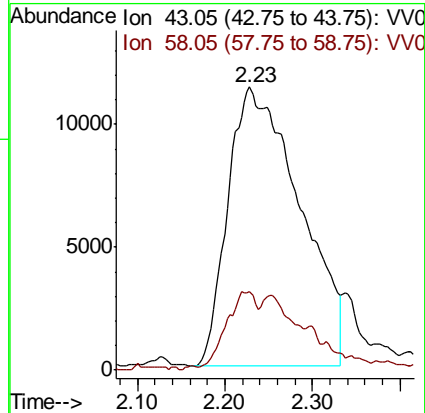
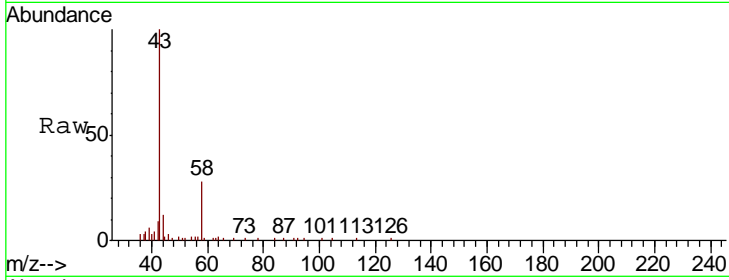




#13
 Acetone
 Concen: 46.978 ug/L
 RT: 2.23 min Scan# 354
 Delta R.T. 0.00 min
 Lab File: VV017720.D
 Acq: 29 Jul 2020 10:38

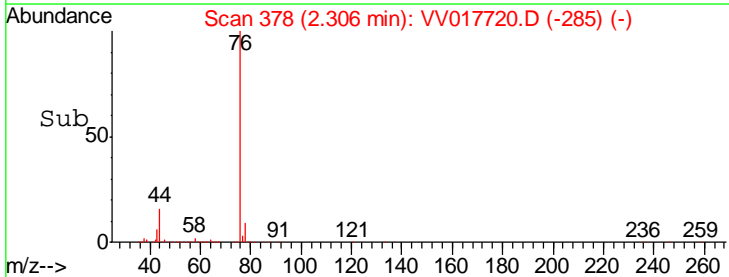
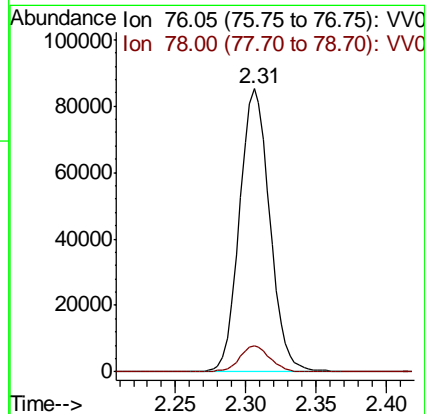
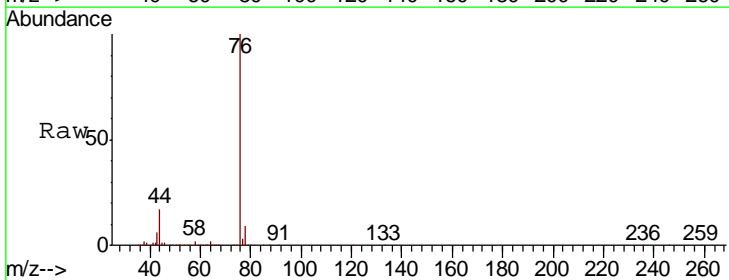
Instrument :
 MSVOA_V
 ClientSampled :

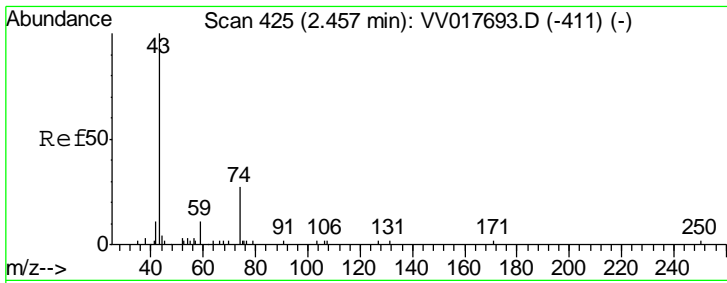
Tgt Ion	Resp	Lower	Upper
43	64780		
58	11.0	0.0	18.6



#14
 Carbon disulfide
 Concen: 5.091 ug/L
 RT: 2.31 min Scan# 378
 Delta R.T. 0.00 min
 Lab File: VV017720.D
 Acq: 29 Jul 2020 10:38

Tgt Ion	Resp	Lower	Upper
76	128515		
78	9.1	6.6	10.0

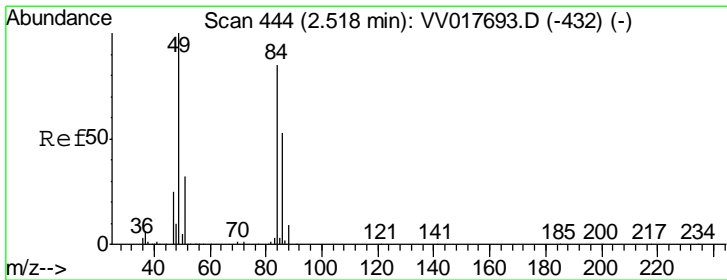
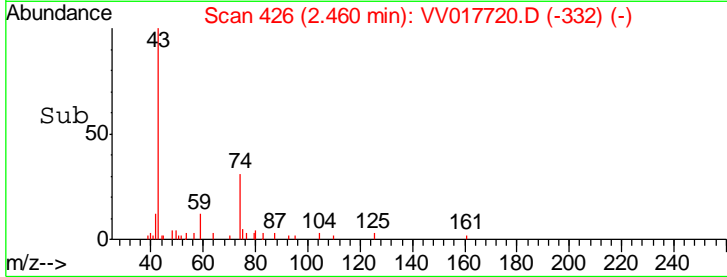
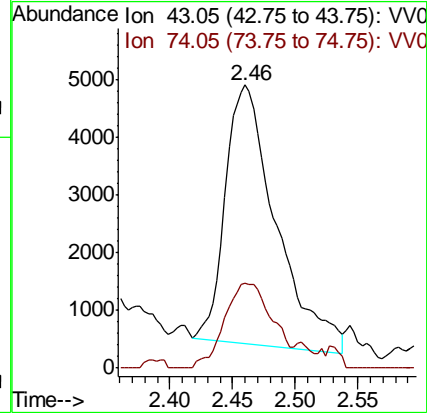
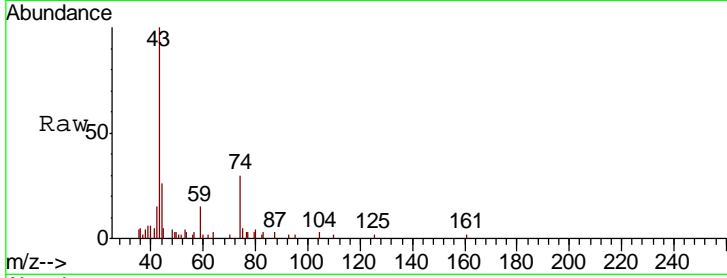




#15
Methyl Acetate
Concen: 4.687 ug/L
RT: 2.46 min Scan# 426
Delta R.T. 0.00 min
Lab File: VV017720.D
Acq: 29 Jul 2020 10:38

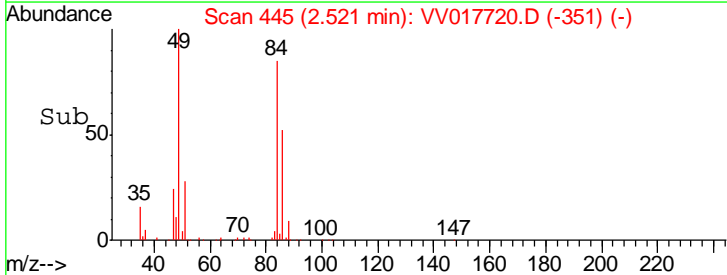
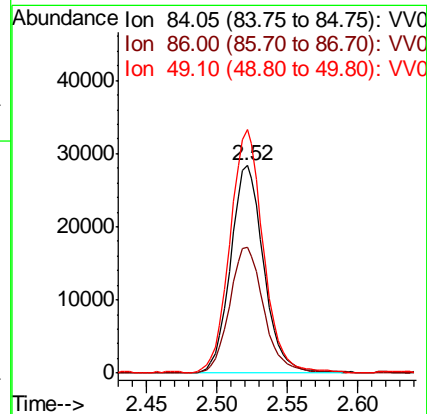
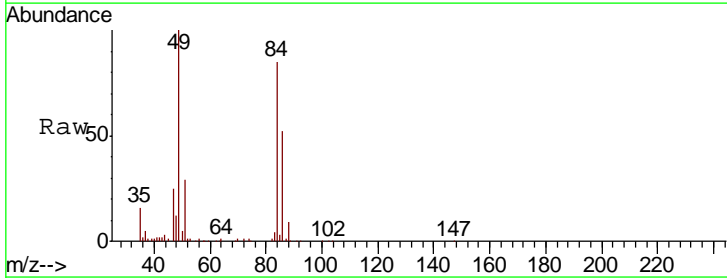
Instrument :
MSVOA_V
ClientSampled :

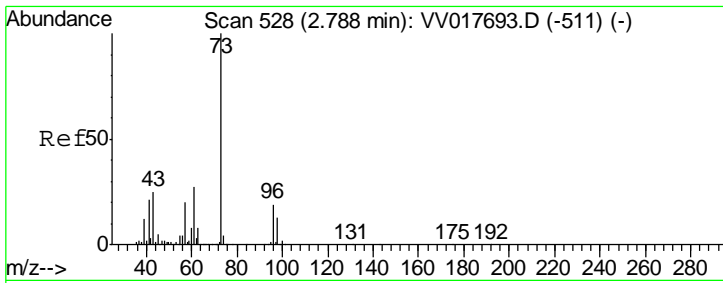
Tgt Ion	Resp	Lower	Upper
43	12576		
74	31.2	26.6	40.0



#16
Methylene chloride
Concen: 5.049 ug/L
RT: 2.52 min Scan# 445
Delta R.T. 0.00 min
Lab File: VV017720.D
Acq: 29 Jul 2020 10:38

Tgt Ion	Resp	Lower	Upper
84	46652		
86	60.5	46.5	86.3
49	117.4	79.2	147.2

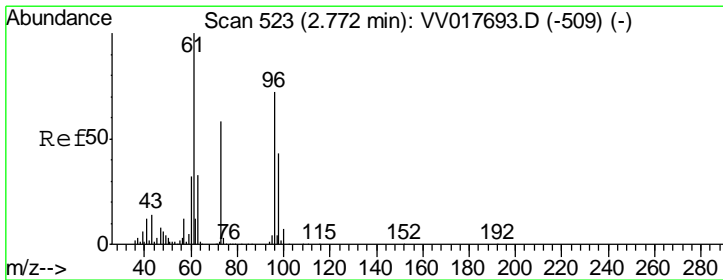
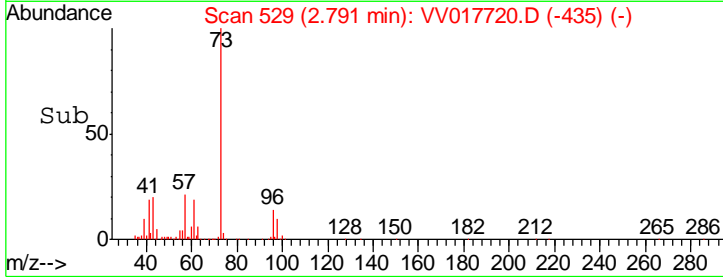
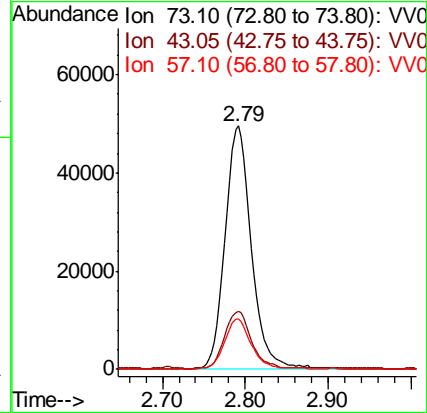
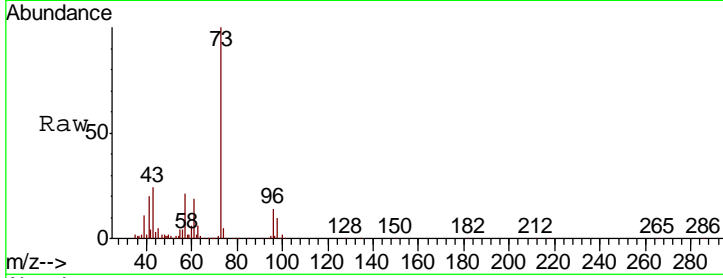




#17
 Methyl tert-butyl Ether
 Concen: 5.142 ug/L
 RT: 2.79 min Scan# 529
 Delta R.T. 0.00 min
 Lab File: VV017720.D
 Acq: 29 Jul 2020 10:38

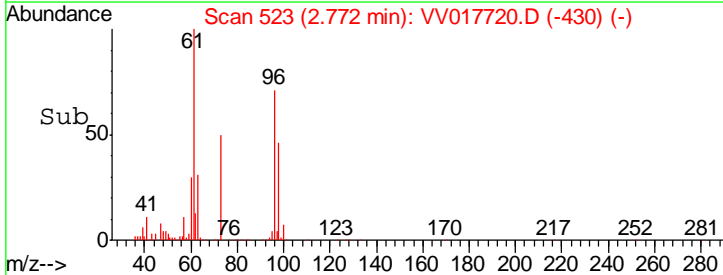
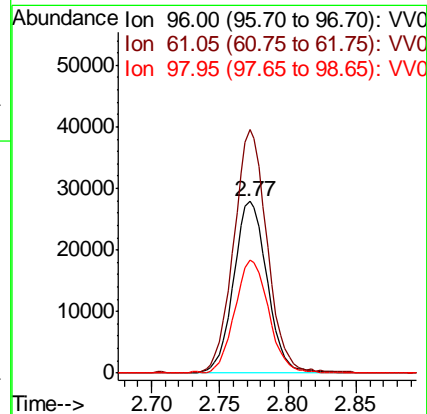
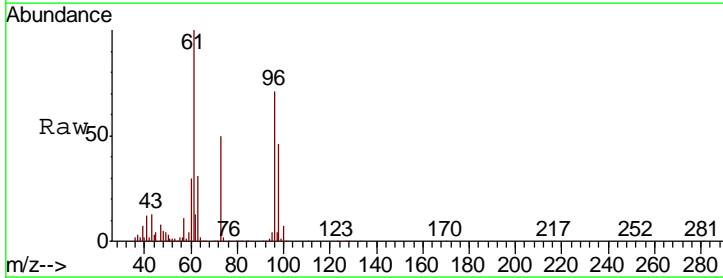
Instrument :
 MSVOA_V
 ClientSampled :

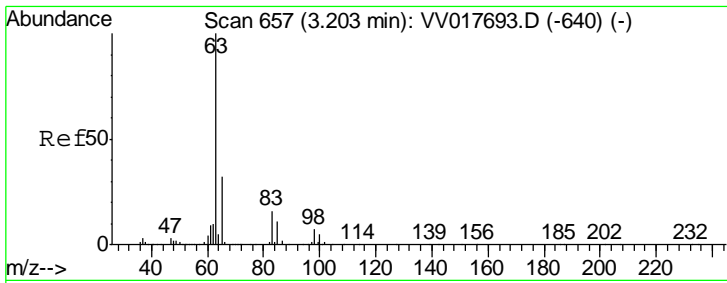
Tgt Ion	Resp	Lower	Upper
73	109447		
43	23.8	18.3	27.5
57	21.0	16.7	25.1



#18
 trans-1,2-Dichloroethene
 Concen: 5.280 ug/L
 RT: 2.77 min Scan# 523
 Delta R.T. 0.00 min
 Lab File: VV017720.D
 Acq: 29 Jul 2020 10:38

Tgt Ion	Resp	Lower	Upper
96	47770		
61	141.7	96.0	178.4
98	65.7	43.5	80.9

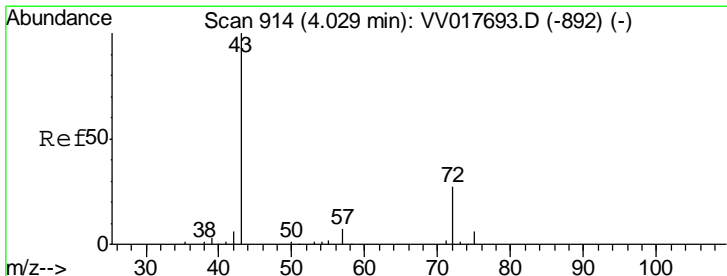
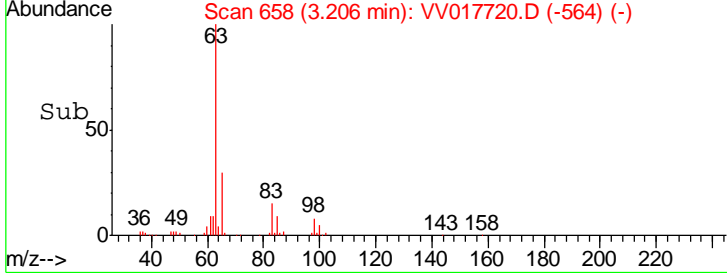
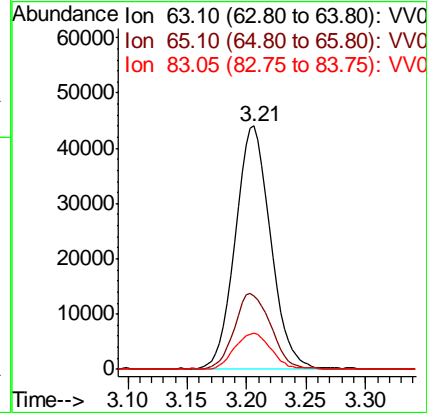
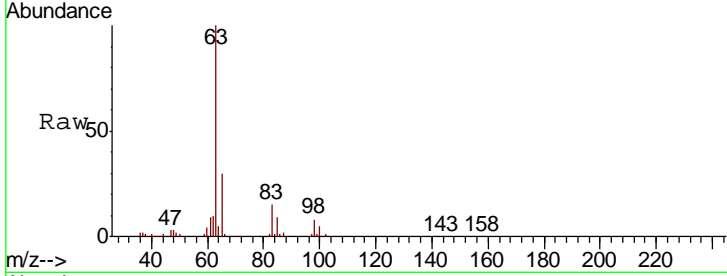




#19
 1,1-Dichloroethane
 Concen: 4.769 ug/L
 RT: 3.21 min Scan# 658
 Delta R.T. 0.00 min
 Lab File: VV017720.D
 Acq: 29 Jul 2020 10:38

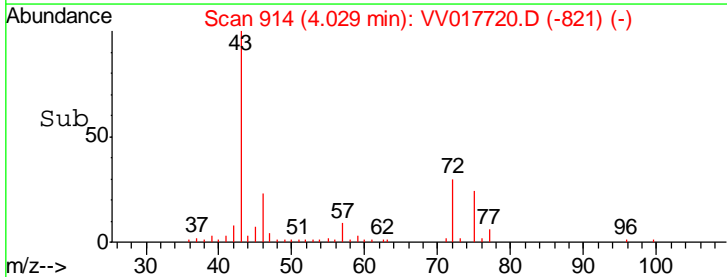
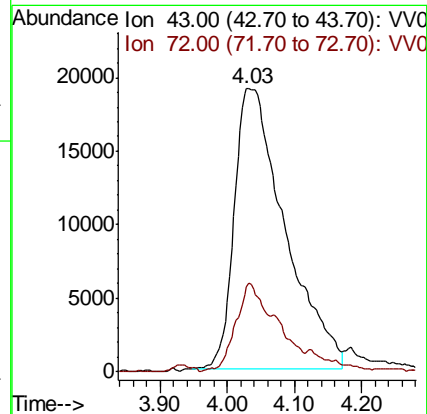
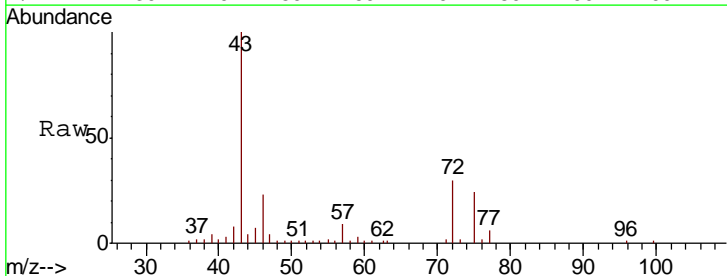
Instrument :
 MSVOA_V
 ClientSampled :

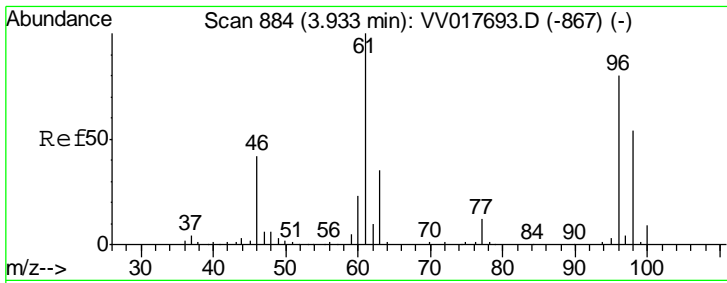
Tgt Ion	Resp	Lower	Upper
63	90746		
65	30.2	21.4	39.8
83	15.0	10.4	19.4



#21
 2-Butanone
 Concen: 42.911 ug/L
 RT: 4.03 min Scan# 914
 Delta R.T. 0.00 min
 Lab File: VV017720.D
 Acq: 29 Jul 2020 10:38

Tgt Ion	Resp	Lower	Upper
43	99916		
72	25.6	13.0	38.9

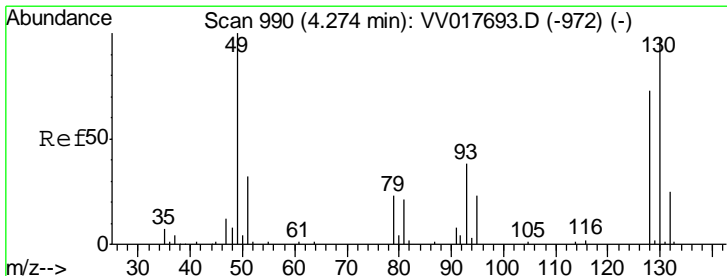
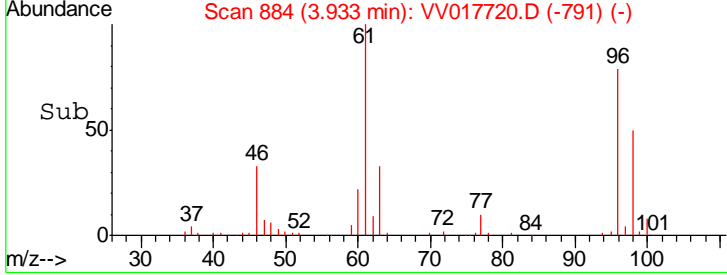
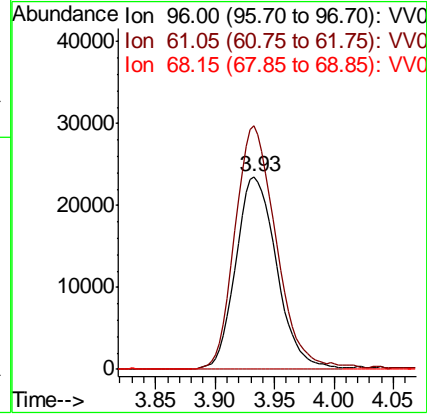
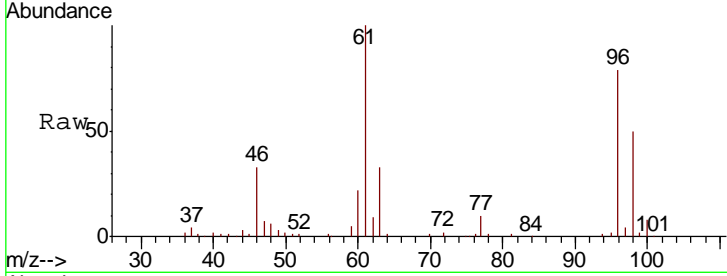




#22
 cis-1,2-Dichloroethene
 Concen: 4.918 ug/L
 RT: 3.93 min Scan# 884
 Delta R.T. 0.00 min
 Lab File: VV017720.D
 Acq: 29 Jul 2020 10:38

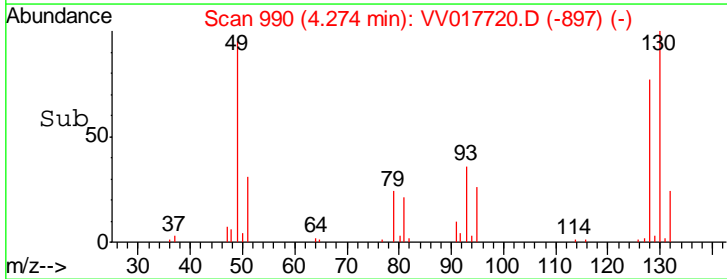
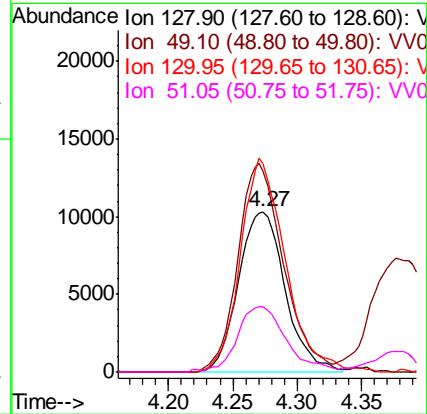
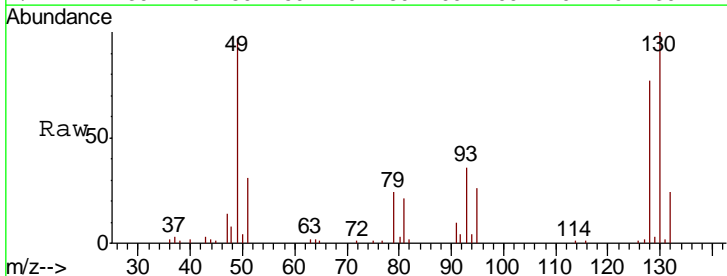
Instrument :
 MSVOA_V
 ClientSampled :

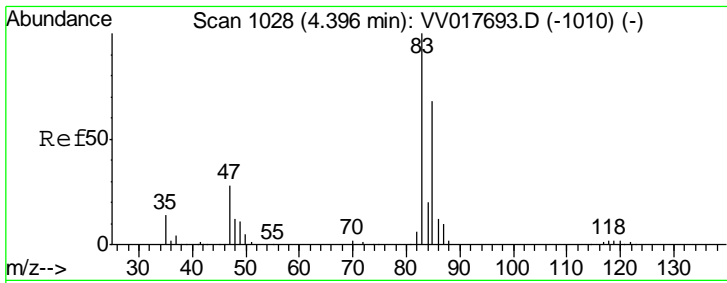
Tgt Ion	Resp	Lower	Upper
96	56034		
61	126.5	89.6	166.4
68	0.0	0.0	0.0



#23
 Bromochloromethane
 Concen: 4.962 ug/L
 RT: 4.27 min Scan# 990
 Delta R.T. 0.00 min
 Lab File: VV017720.D
 Acq: 29 Jul 2020 10:38

Tgt Ion	Resp	Lower	Upper
128	26053		
49	125.5	92.2	171.2
130	129.9	77.2	143.4
51	40.4	33.8	50.6

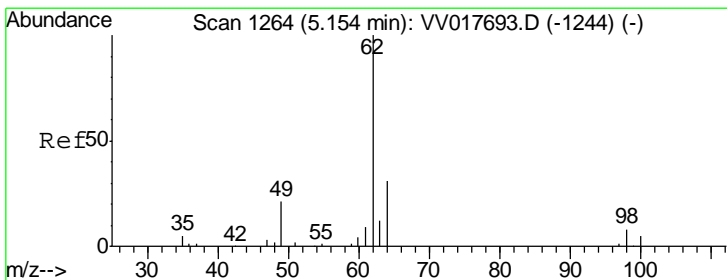
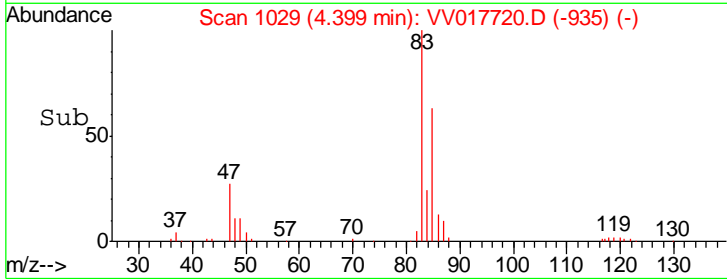
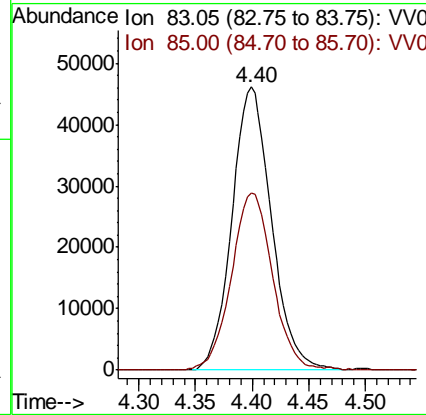
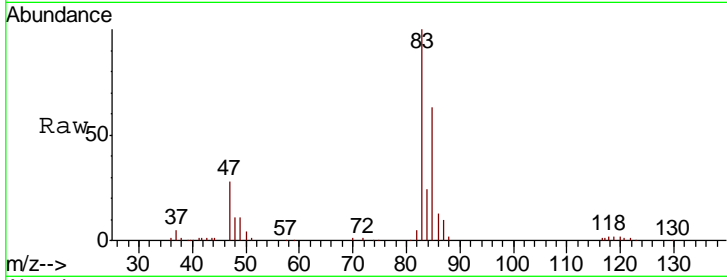




#25
 Chloroform
 Concen: 5.252 ug/L
 RT: 4.40 min Scan# 1029
 Delta R.T. 0.00 min
 Lab File: VV017720.D
 Acq: 29 Jul 2020 10:38

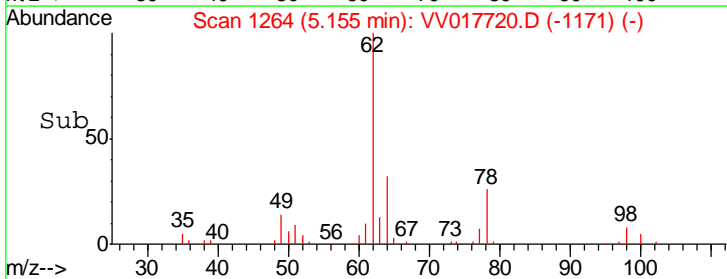
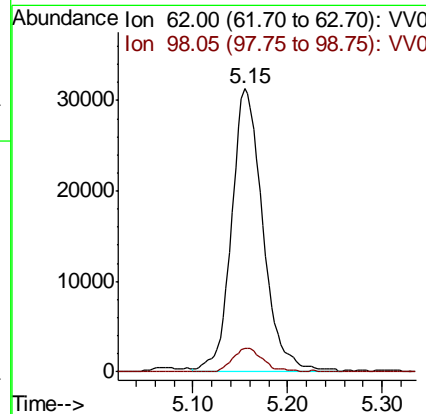
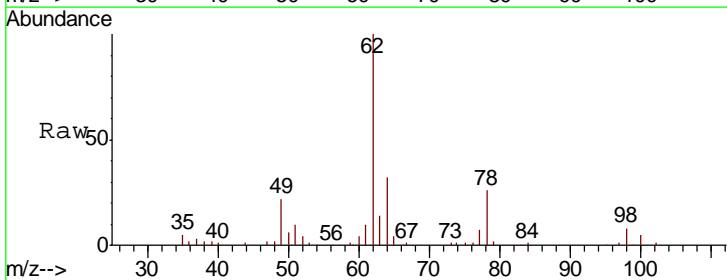
Instrument :
 MSVOA_V
 ClientSampled :

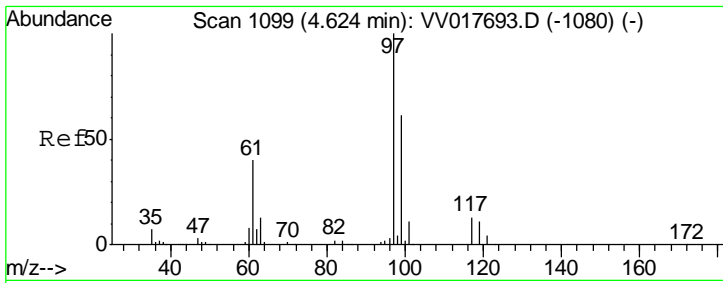
Tgt Ion	Resp	Lower	Upper
83	112159		
85	62.8	47.3	87.9



#27
 1,2-Dichloroethane
 Concen: 5.173 ug/L
 RT: 5.15 min Scan# 1264
 Delta R.T. 0.00 min
 Lab File: VV017720.D
 Acq: 29 Jul 2020 10:38

Tgt Ion	Resp	Lower	Upper
62	71638		
98	8.3	7.0	10.6

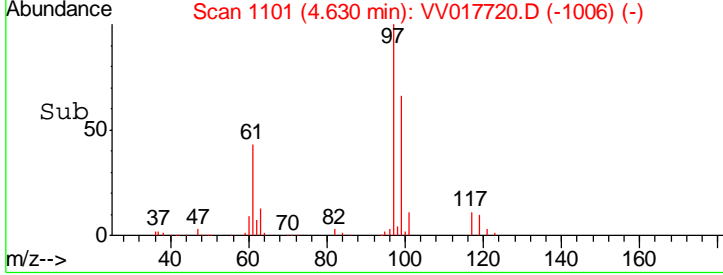
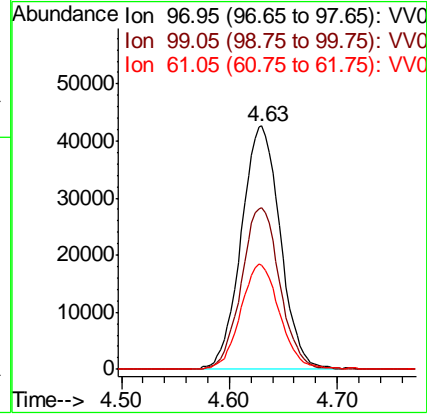
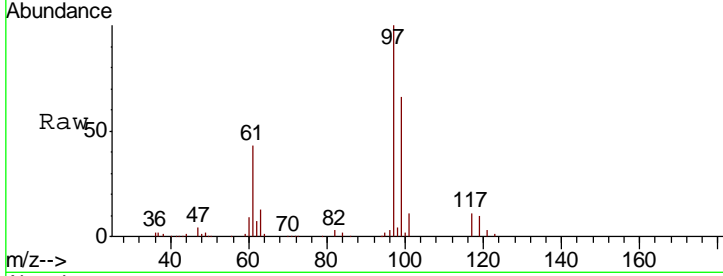




#29
 1,1,1-Trichloroethane
 Concen: 5.005 ug/L
 RT: 4.63 min Scan# 1101
 Delta R.T. 0.01 min
 Lab File: VV017720.D
 Acq: 29 Jul 2020 10:38

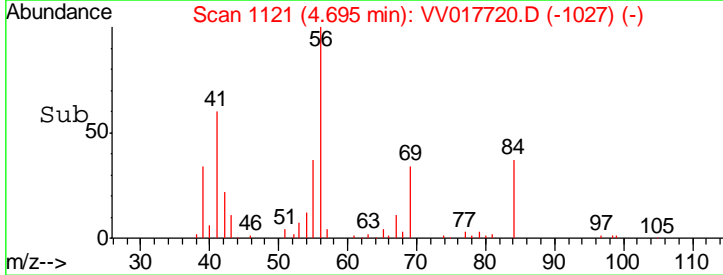
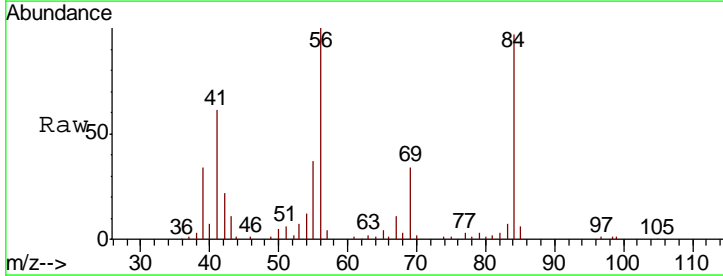
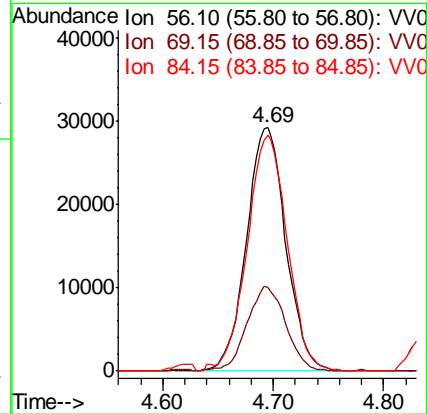
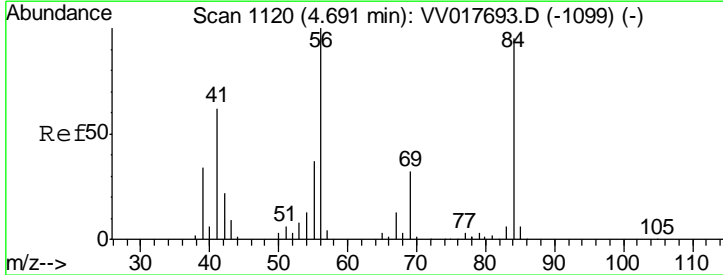
Instrument :
 MSVOA_V
 ClientSampled :

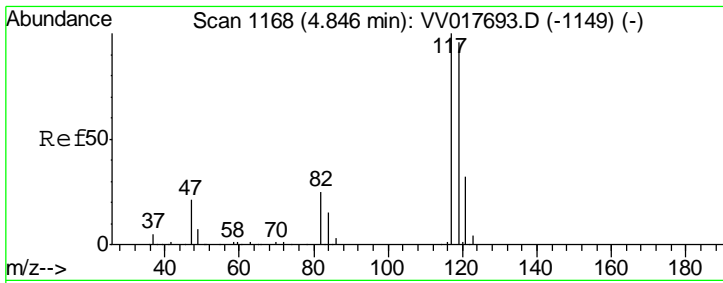
Tgt Ion	Resp	Lower	Upper
97	107197		
99	65.3	50.6	76.0
61	43.3	35.7	53.5



#30
 Cyclohexane
 Concen: 4.257 ug/L
 RT: 4.69 min Scan# 1121
 Delta R.T. 0.00 min
 Lab File: VV017720.D
 Acq: 29 Jul 2020 10:38

Tgt Ion	Resp	Lower	Upper
56	72253		
69	34.2	25.4	38.2
84	98.6	73.0	109.4

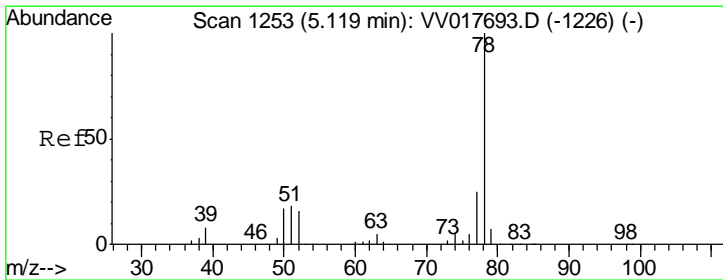
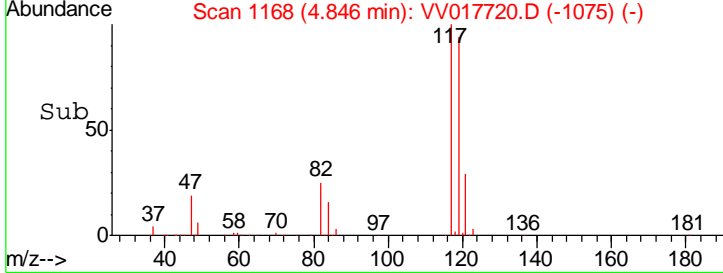
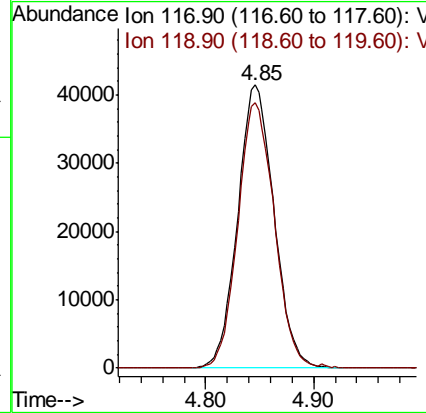
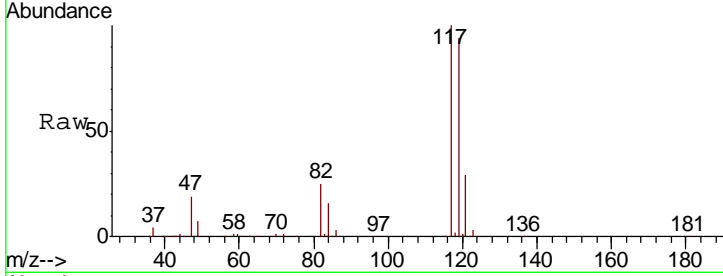




#31
 Carbon tetrachloride
 Concen: 5.109 ug/L
 RT: 4.85 min Scan# 1168
 Delta R.T. 0.00 min
 Lab File: VV017720.D
 Acq: 29 Jul 2020 10:38

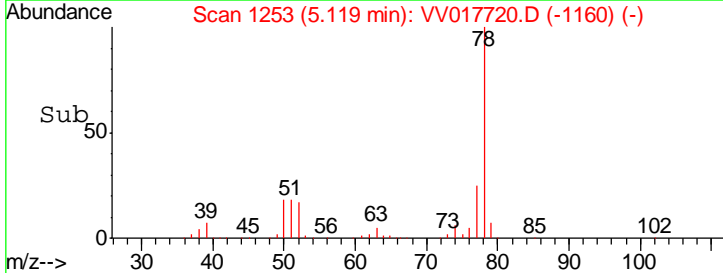
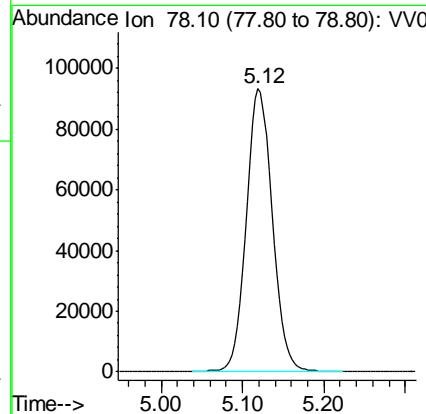
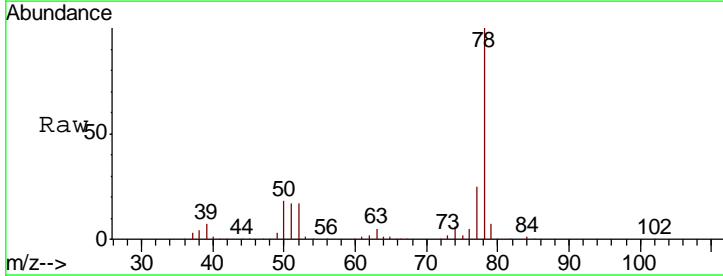
Instrument :
 MSVOA_V
 ClientSampled :

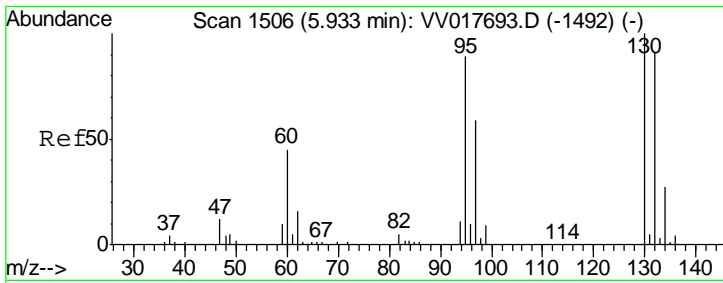
Tgt Ion: 117 Resp: 97334
 Ion Ratio Lower Upper
 117 100
 119 93.9 76.9 115.3



#33
 Benzene
 Concen: 4.741 ug/L
 RT: 5.12 min Scan# 1253
 Delta R.T. 0.00 min
 Lab File: VV017720.D
 Acq: 29 Jul 2020 10:38

Tgt Ion: 78 Resp: 205459

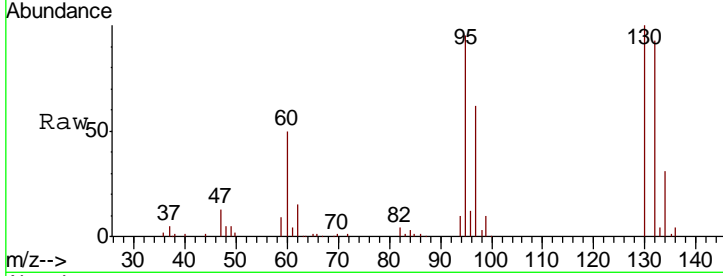




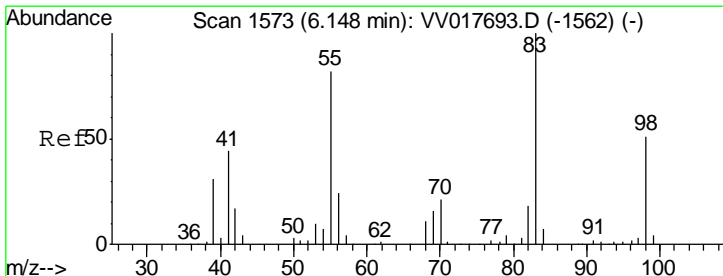
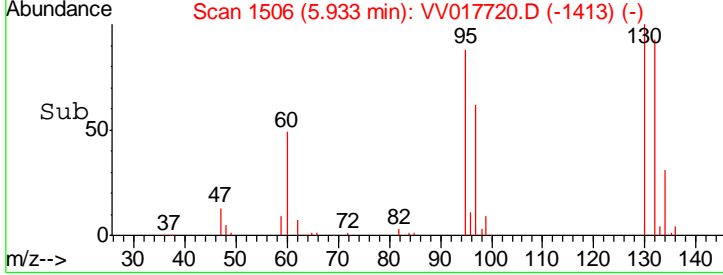
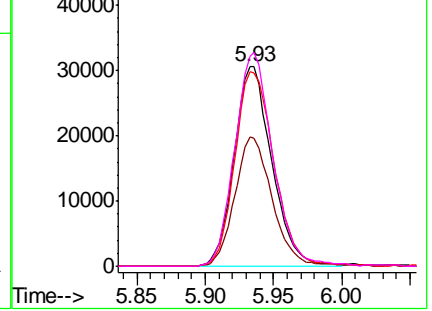
#34
 Trichloroethene
 Concen: 4.855 ug/L
 RT: 5.93 min Scan# 1506
 Delta R.T. 0.00 min
 Lab File: VV017720.D
 Acq: 29 Jul 2020 10:38

Instrument :
 MSVOA_V
 ClientSampled :

Tgt Ion	Resp	Lower	Upper
95	58772		
97	64.7	46.1	85.5
132	97.4	71.7	133.1
130	105.2	74.3	137.9

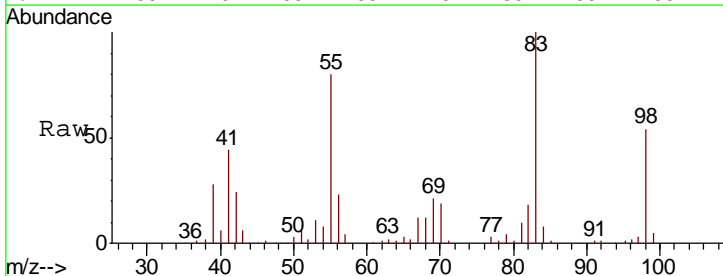


Abundance Ion 95.00 (94.70 to 95.70): VV017720.D (-1413) (-)
 Ion 96.95 (96.65 to 97.65): VV017720.D (-1413) (-)
 Ion 131.95 (131.65 to 132.65): VV017720.D (-1413) (-)
 Ion 129.95 (129.65 to 130.65): VV017720.D (-1413) (-)

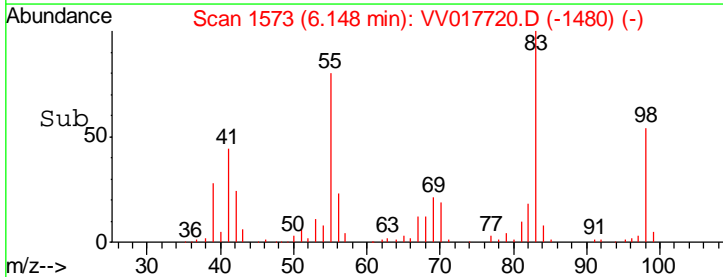
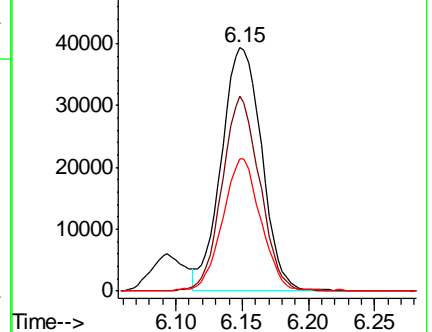


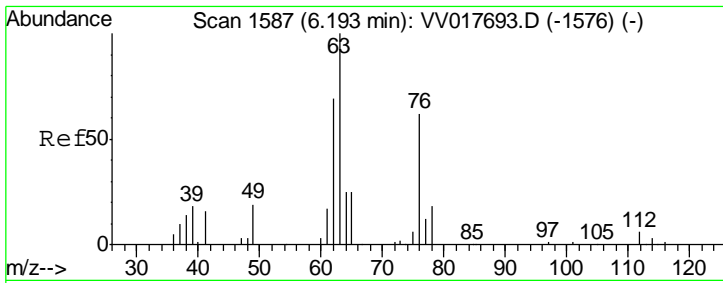
#35
 Methylcyclohexane
 Concen: 4.544 ug/L
 RT: 6.15 min Scan# 1573
 Delta R.T. 0.00 min
 Lab File: VV017720.D
 Acq: 29 Jul 2020 10:38

Tgt Ion	Resp	Lower	Upper
83	83200		
55	74.6	61.8	92.8
98	52.0	39.0	58.6



Abundance Ion 83.15 (82.85 to 83.85): VV017720.D (-1480) (-)
 Ion 55.10 (54.80 to 55.80): VV017720.D (-1480) (-)
 Ion 98.15 (97.85 to 98.85): VV017720.D (-1480) (-)

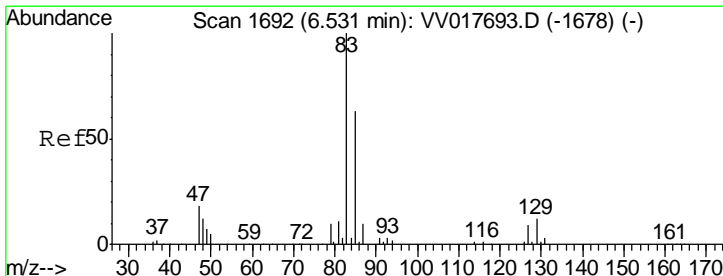
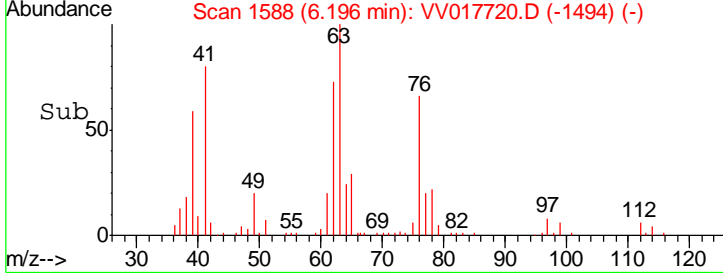
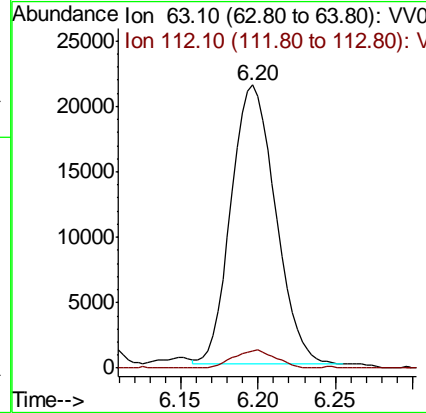
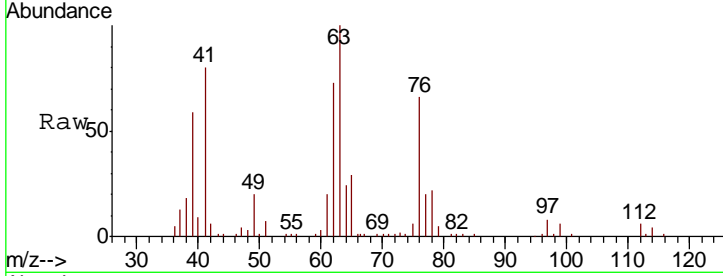




#37
 1,2-Dichloropropane
 Concen: 4.185 ug/L
 RT: 6.20 min Scan# 1588
 Delta R.T. 0.00 min
 Lab File: VV017720.D
 Acq: 29 Jul 2020 10:38

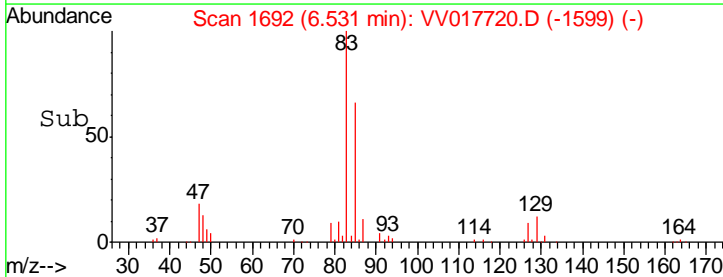
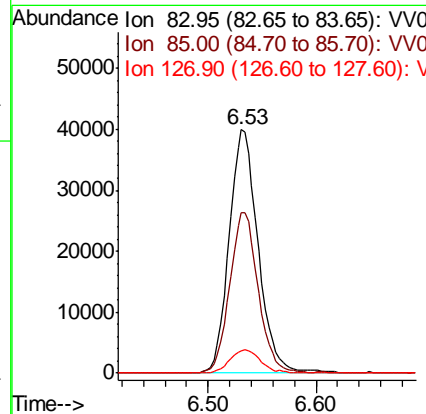
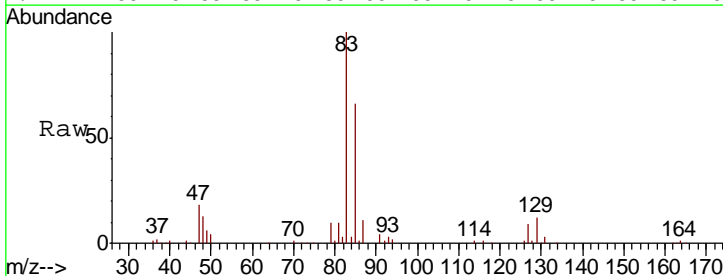
Instrument :
 MSVOA_V
 ClientSampled :

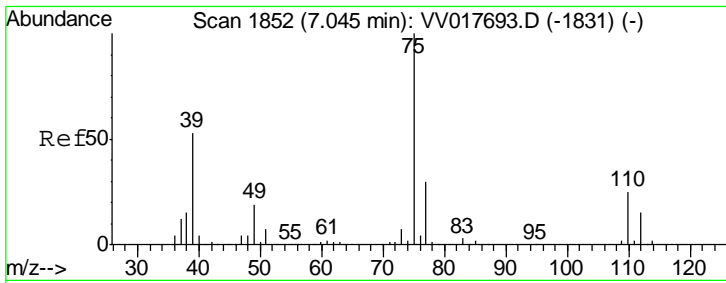
Tot Ion: 63 Resp: 42617
 Ion Ratio Lower Upper
 63 100
 112 6.2 4.5 6.7



#38
 Bromodichloromethane
 Concen: 4.991 ug/L
 RT: 6.53 min Scan# 1692
 Delta R.T. 0.00 min
 Lab File: VV017720.D
 Acq: 29 Jul 2020 10:38

Tgt Ion: 83 Resp: 74777
 Ion Ratio Lower Upper
 83 100
 85 65.7 44.7 83.1
 127 9.2 7.4 11.0

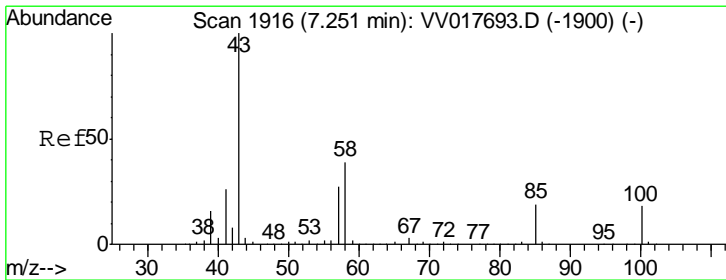
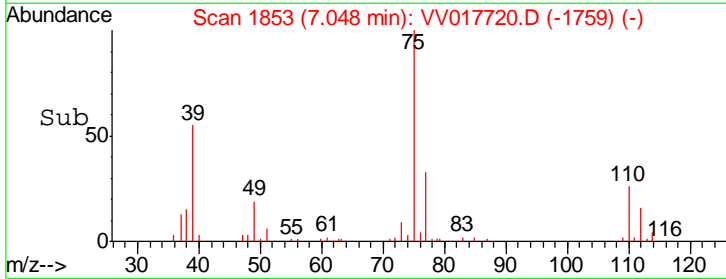
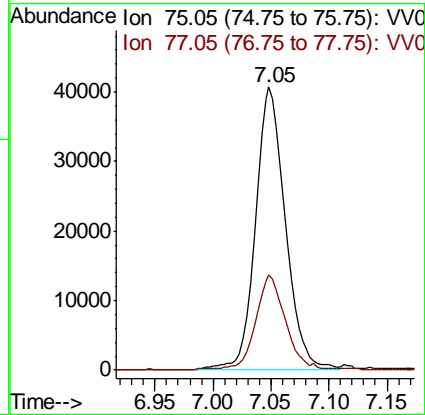
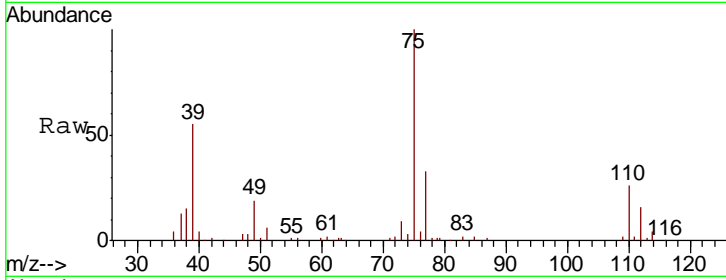




#39
 cis-1,3-Dichloropropene
 Concen: 4.794 ug/L
 RT: 7.05 min Scan# 1853
 Delta R.T. 0.00 min
 Lab File: VV017720.D
 Acq: 29 Jul 2020 10:38

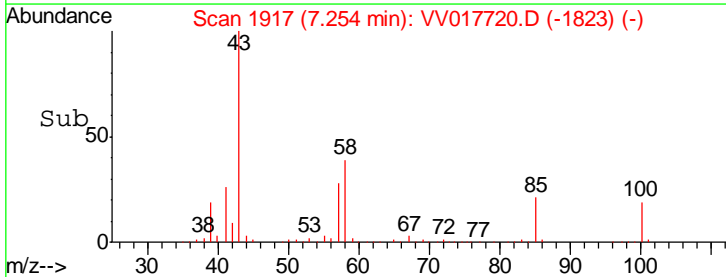
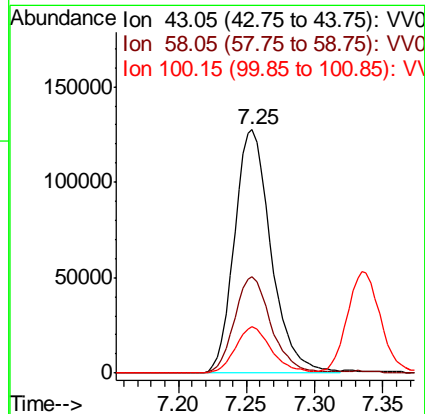
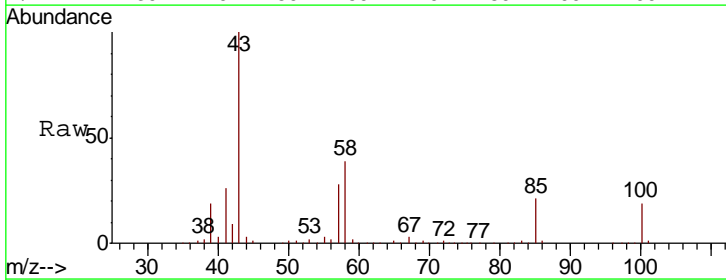
Instrument : MSVOA_V
 ClientSampled :

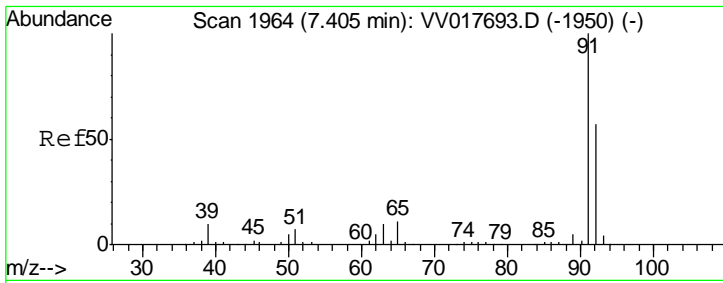
Tot Ion: 75 Resp: 73632
 Ion Ratio Lower Upper
 75 100
 77 33.4 23.2 43.2



#40
 4-Methyl-2-pentanone
 Concen: 42.570 ug/L
 RT: 7.25 min Scan# 1917
 Delta R.T. 0.00 min
 Lab File: VV017720.D
 Acq: 29 Jul 2020 10:38

Tgt Ion: 43 Resp: 237712
 Ion Ratio Lower Upper
 43 100
 58 39.7 31.2 46.8
 100 18.6 13.6 20.4

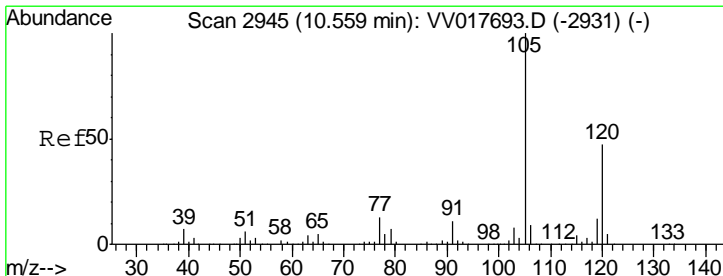
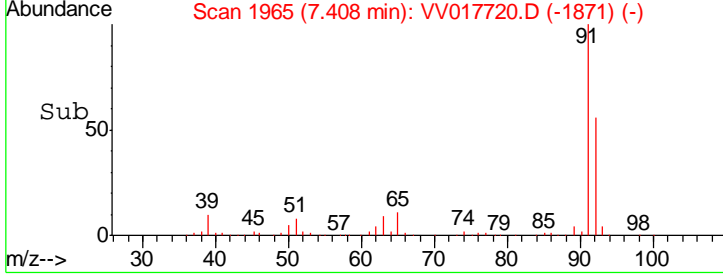
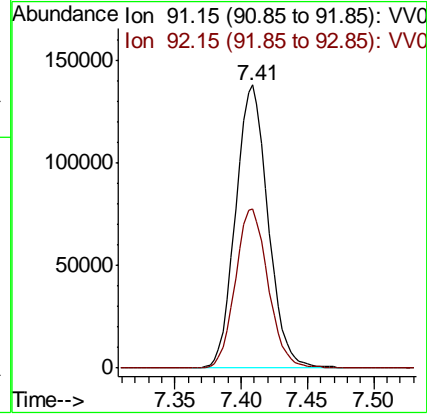
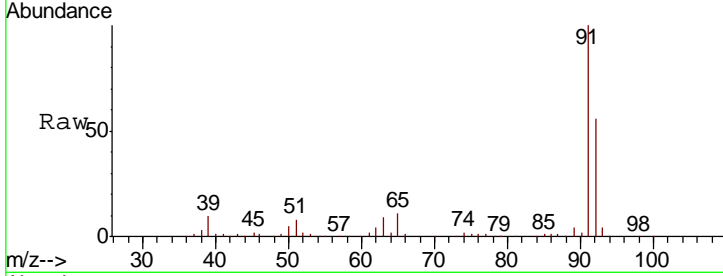




#42
 Toluene
 Concen: 4.975 ug/L
 RT: 7.41 min Scan# 1965
 Delta R.T. 0.00 min
 Lab File: VV017720.D
 Acq: 29 Jul 2020 10:38

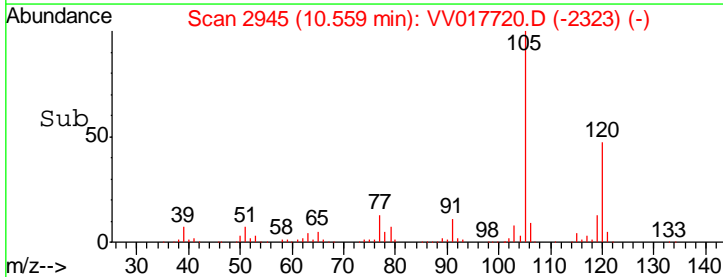
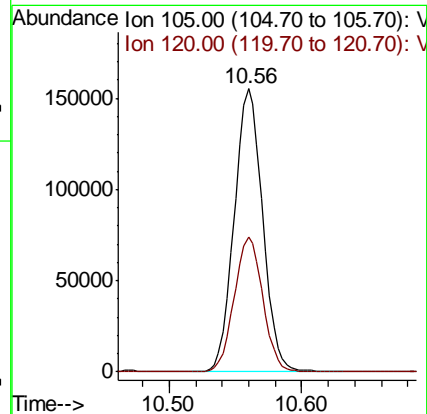
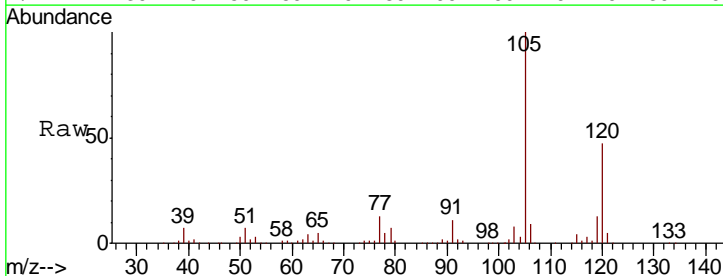
Instrument : MSVOA_V
 ClientSampled :

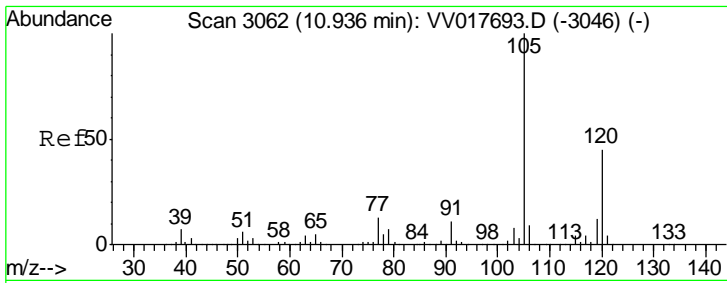
Tgt Ion	Resp	Lower	Upper
91	235167		
92	56.3	40.8	75.8



#43
 1,3,5-Trimethylbenzene
 Concen: 5.236 ug/L
 RT: 10.56 min Scan# 2945
 Delta R.T. 0.00 min
 Lab File: VV017720.D
 Acq: 29 Jul 2020 10:38

Tgt Ion	Resp	Lower	Upper
105	231126		
120	47.8	39.4	59.2

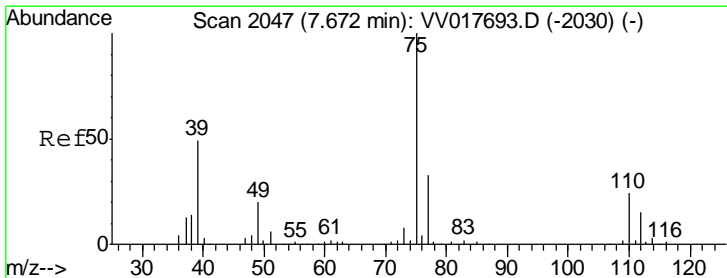
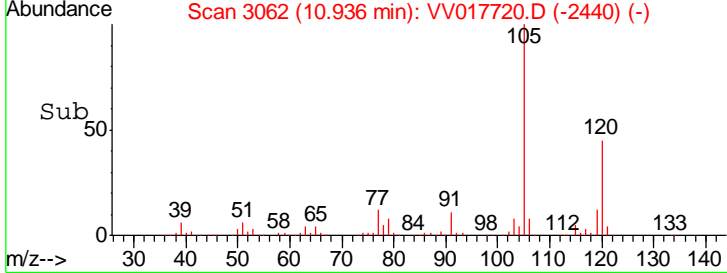
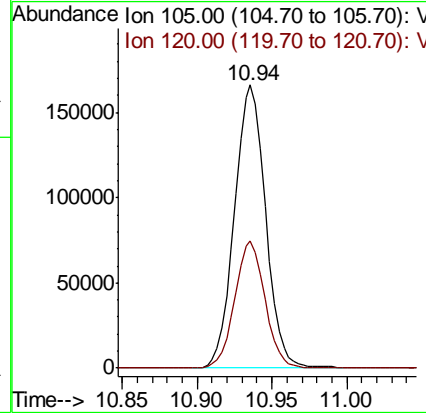
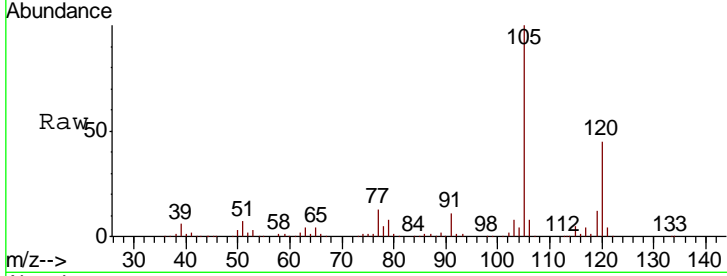




#44
 1,2,4-Trimethylbenzene
 Concen: 5.343 ug/L
 RT: 10.94 min Scan# 3062
 Delta R.T. 0.00 min
 Lab File: VV017720.D
 Acq: 29 Jul 2020 10:38

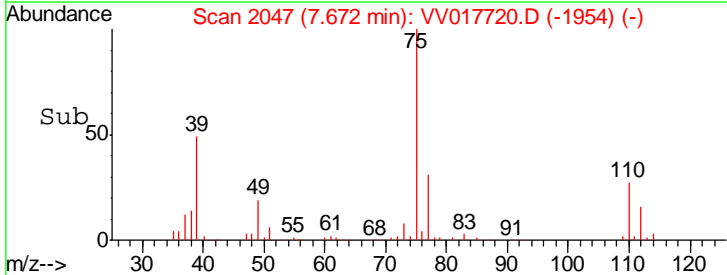
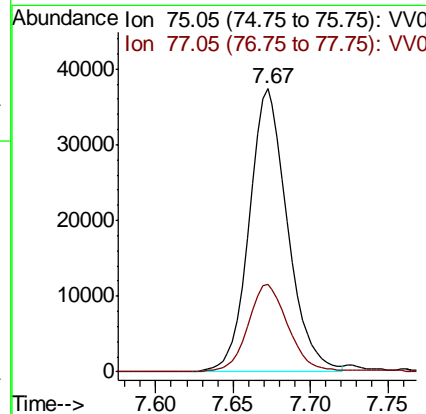
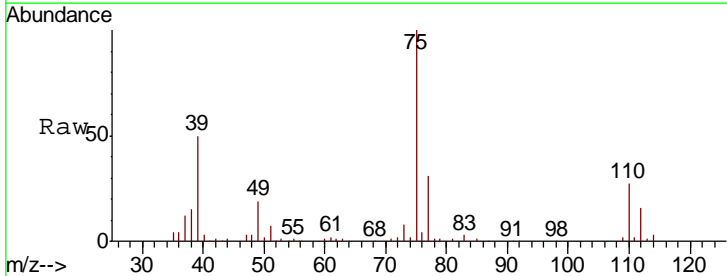
Instrument :
 MSVOA_V
 ClientSampled :

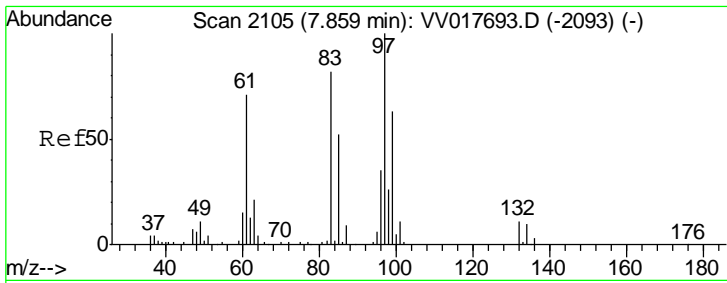
Tgt Ion: 105 Resp: 240931
 Ion Ratio Lower Upper
 105 100
 120 43.6 35.9 53.9



#46
 trans-1,3-Dichloropropene
 Concen: 4.687 ug/L
 RT: 7.67 min Scan# 2047
 Delta R.T. 0.00 min
 Lab File: VV017720.D
 Acq: 29 Jul 2020 10:38

Tgt Ion: 75 Resp: 64635
 Ion Ratio Lower Upper
 75 100
 77 31.0 22.5 41.7

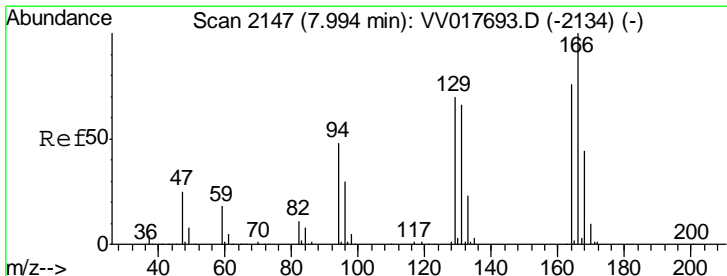
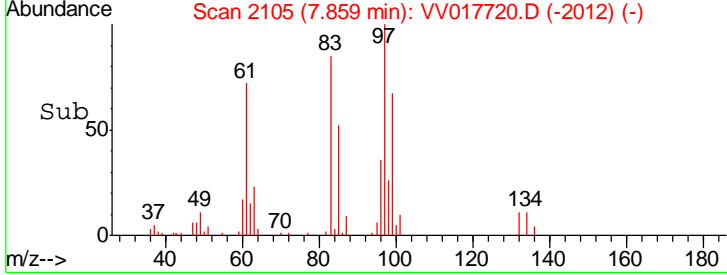
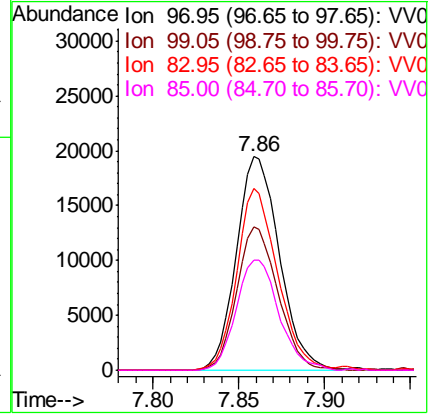
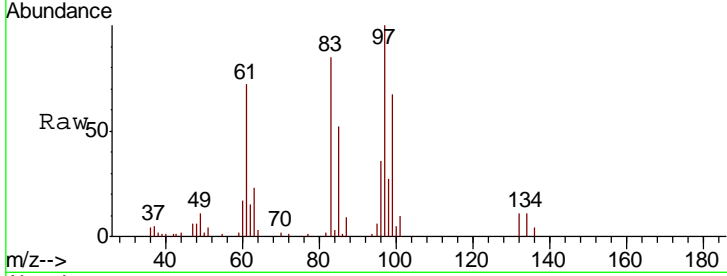




#47
 1,1,2-Trichloroethane
 Concen: 4.402 ug/L
 RT: 7.86 min Scan# 2105
 Delta R.T. 0.00 min
 Lab File: VV017720.D
 Acq: 29 Jul 2020 10:38

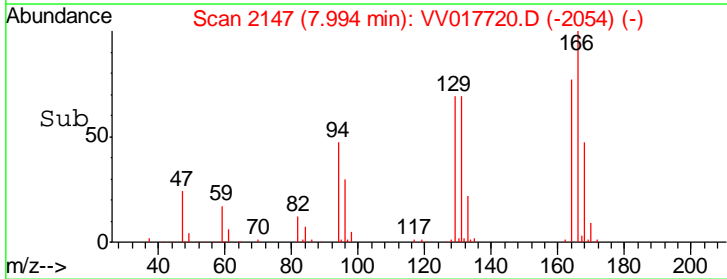
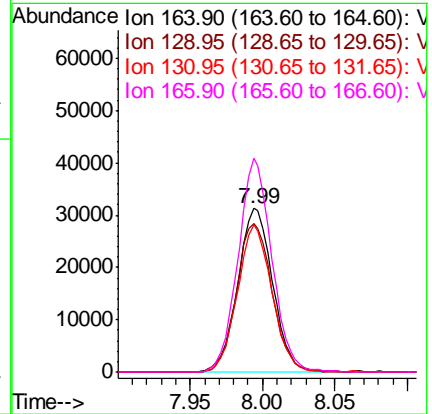
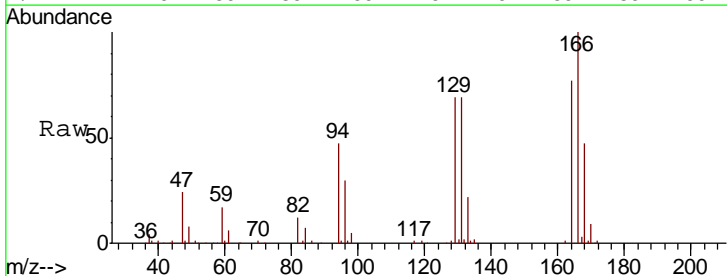
Instrument : MSVOA_V
 ClientSampled :

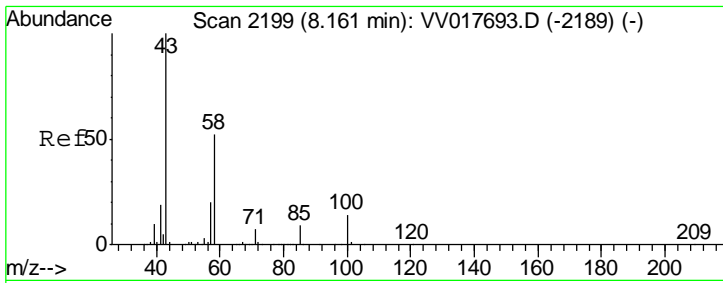
Tgt Ion	Resp	Lower	Upper
97	100		
99	67.0	39.5	73.4
83	85.3	52.6	97.6
85	51.7	35.1	65.1



#49
 Tetrachloroethene
 Concen: 4.877 ug/L
 RT: 7.99 min Scan# 2147
 Delta R.T. 0.00 min
 Lab File: VV017720.D
 Acq: 29 Jul 2020 10:38

Tgt Ion	Resp	Lower	Upper
164	100		
129	90.7	65.0	120.8
131	90.1	63.6	118.2
166	130.7	91.7	170.3

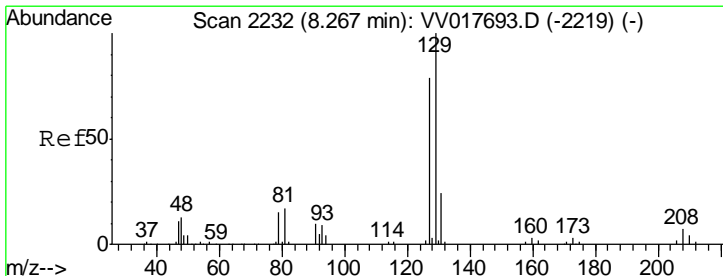
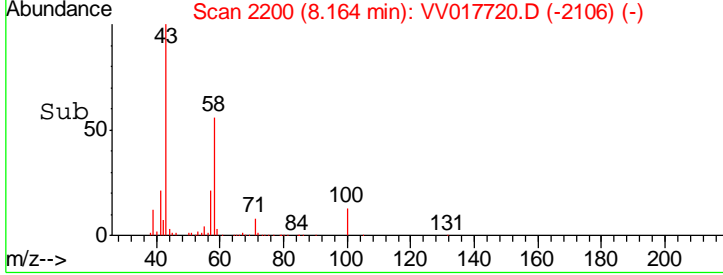
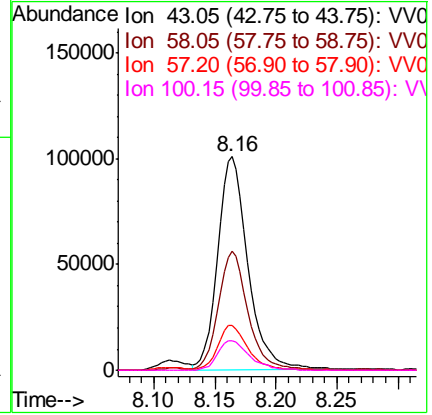
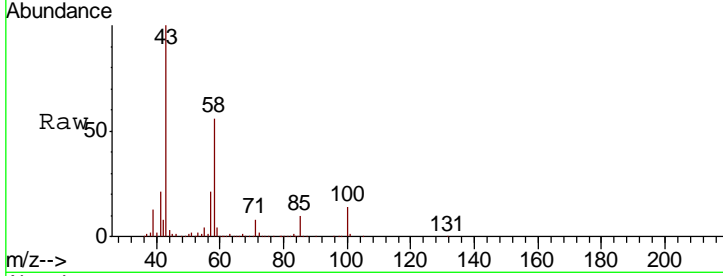




#50
 2-Hexanone
 Concen: 44.350 ug/L
 RT: 8.16 min Scan# 2200
 Delta R.T. 0.00 min
 Lab File: VV017720.D
 Acq: 29 Jul 2020 10:38

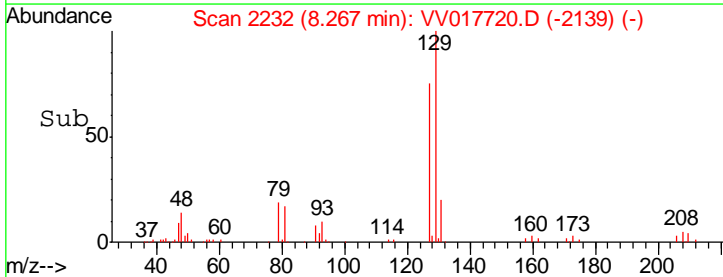
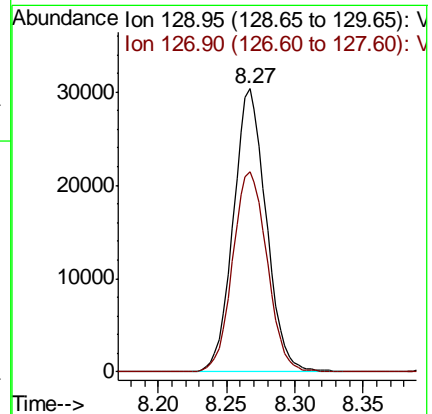
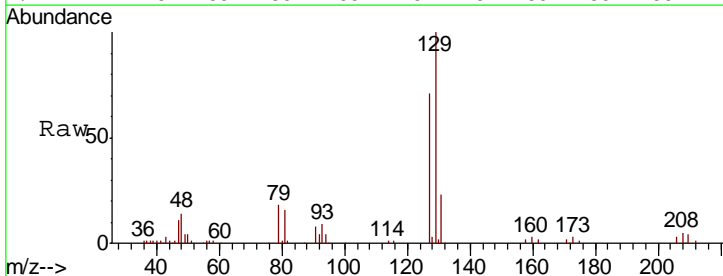
Instrument :
 MSVOA_V
 ClientSampled :

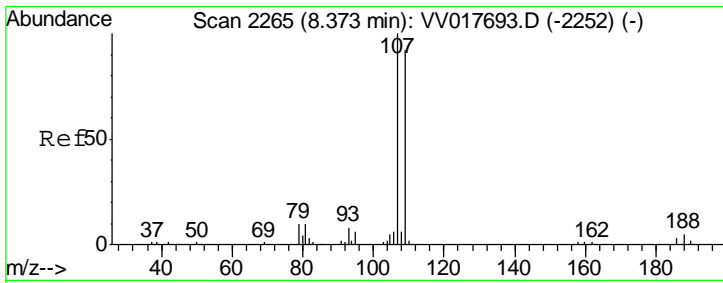
Tgt Ion	Resp	Lower	Upper
43	100		
58	53.0	41.6	62.4
57	20.9	15.4	23.0
100	14.7	11.2	16.8



#51
 Dibromochloromethane
 Concen: 5.164 ug/L
 RT: 8.27 min Scan# 2232
 Delta R.T. 0.00 min
 Lab File: VV017720.D
 Acq: 29 Jul 2020 10:38

Tgt Ion	Resp	Lower	Upper
129	100		
127	70.7	56.3	104.5

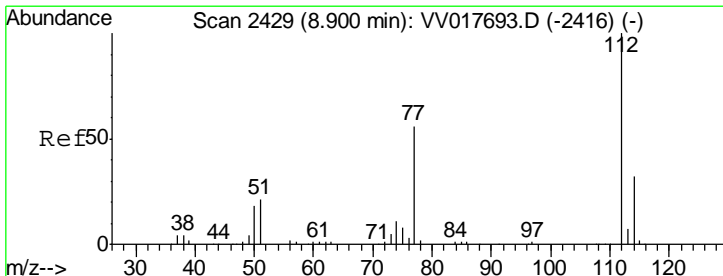
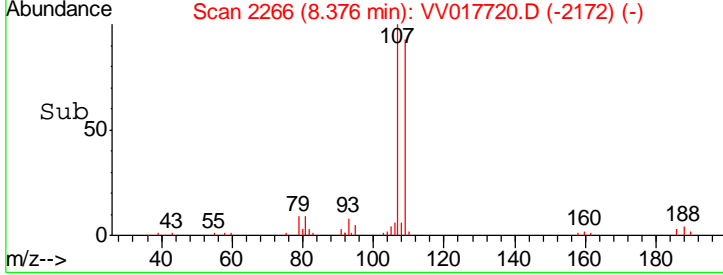
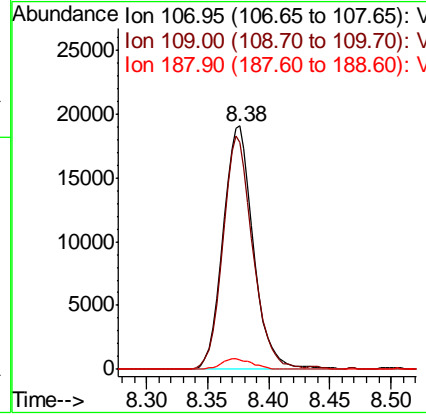
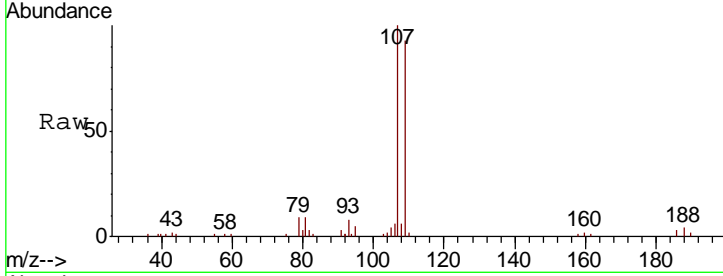




#52
 1,2-Dibromoethane
 Concen: 4.570 ug/L
 RT: 8.38 min Scan# 2266
 Delta R.T. 0.00 min
 Lab File: VV017720.D
 Acq: 29 Jul 2020 10:38

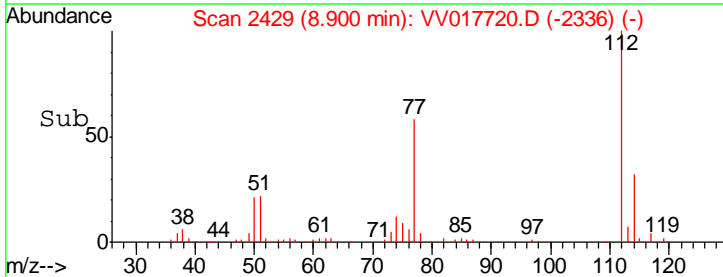
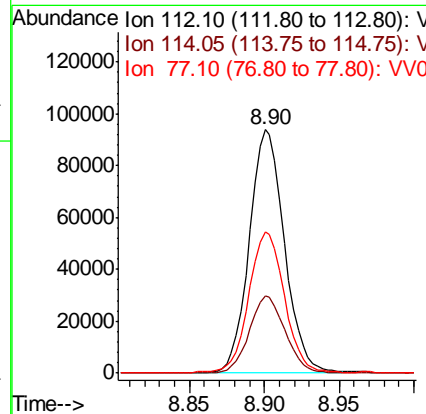
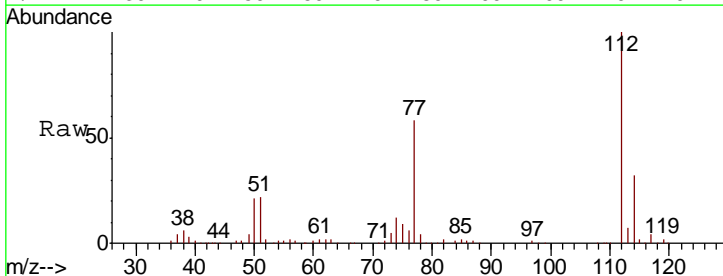
Instrument :
 MSVOA_V
 ClientSampled :

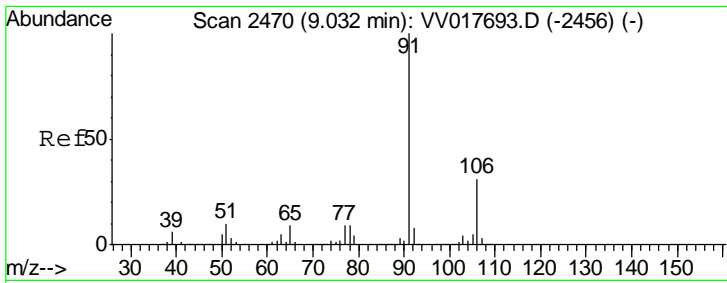
Tgt Ion	Resp	Lower	Upper
107	33311		
109	93.0	65.5	121.7
188	3.9	3.7	5.5



#53
 Chlorobenzene
 Concen: 4.870 ug/L
 RT: 8.90 min Scan# 2429
 Delta R.T. 0.00 min
 Lab File: VV017720.D
 Acq: 29 Jul 2020 10:38

Tgt Ion	Resp	Lower	Upper
112	153495		
114	31.5	23.2	43.2
77	58.0	45.6	68.4

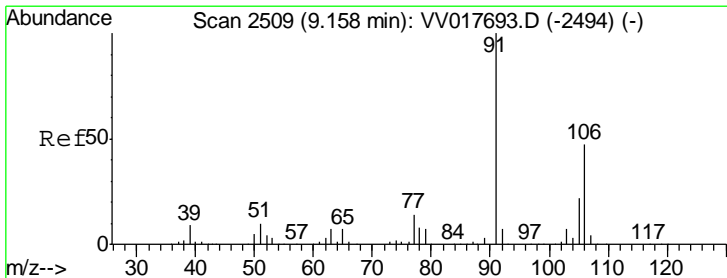
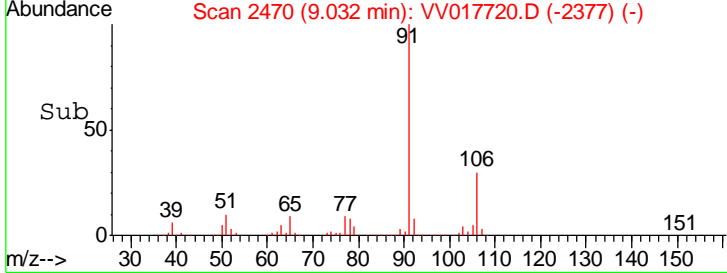
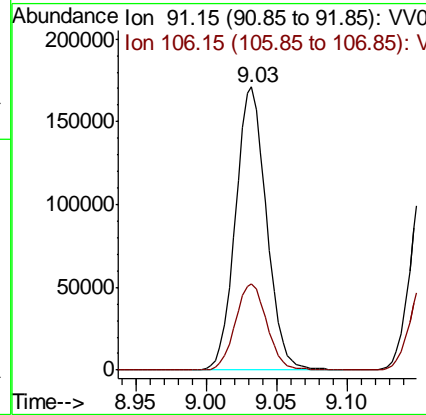
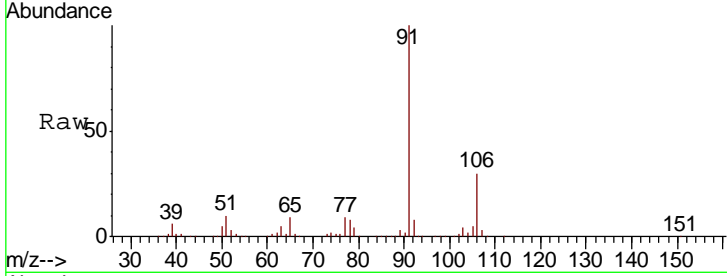




#54
 Ethylbenzene
 Concen: 4.965 ug/L
 RT: 9.03 min Scan# 2470
 Delta R.T. 0.00 min
 Lab File: VV017720.D
 Acq: 29 Jul 2020 10:38

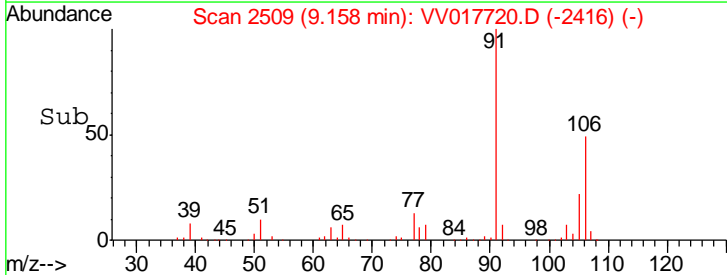
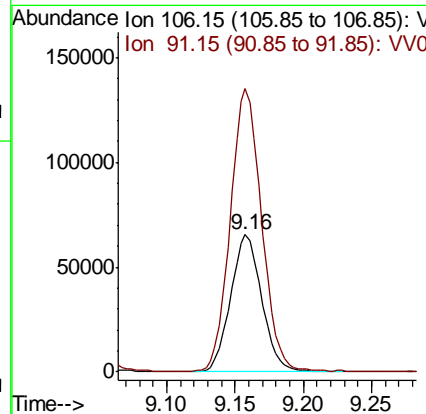
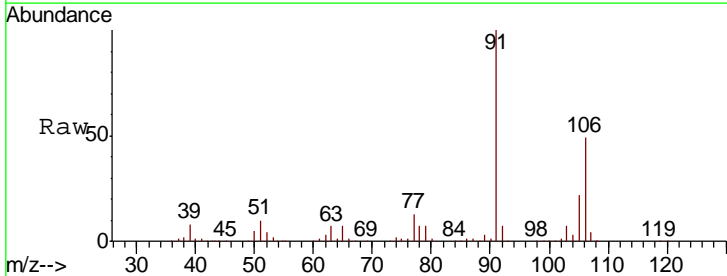
Instrument :
 MSVOA_V
 ClientSampled :

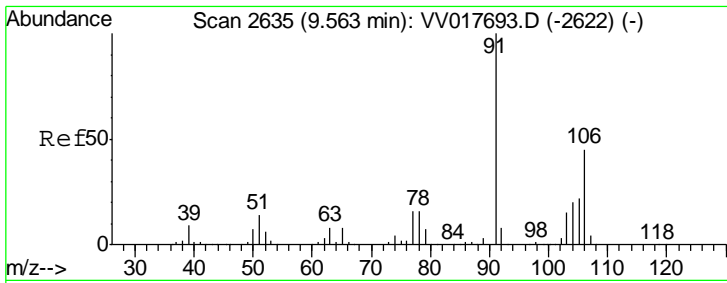
Tgt Ion: 91 Resp: 262776
 Ion Ratio Lower Upper
 91 100
 106 30.5 21.6 40.2



#55
 m,p-xylene
 Concen: 5.217 ug/L
 RT: 9.16 min Scan# 2509
 Delta R.T. 0.00 min
 Lab File: VV017720.D
 Acq: 29 Jul 2020 10:38

Tgt Ion: 106 Resp: 103991
 Ion Ratio Lower Upper
 106 100
 91 206.1 141.3 262.3

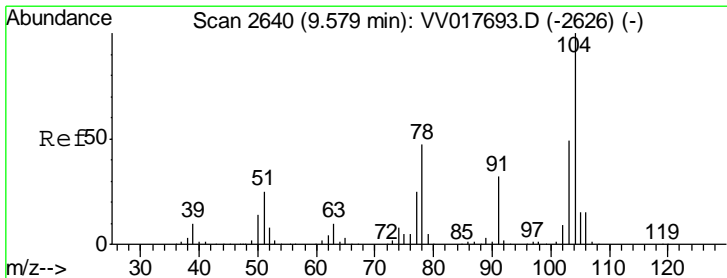
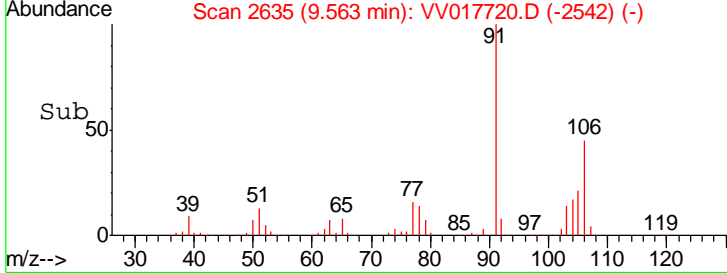
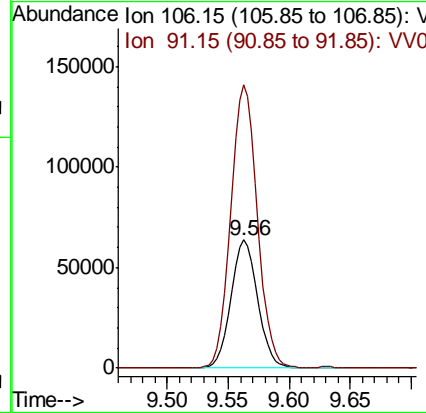
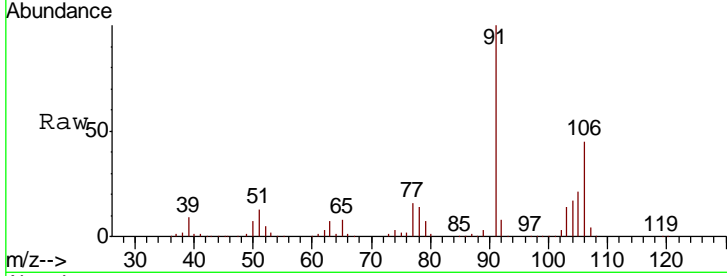




#56
 o-xylene
 Concen: 5.082 ug/L
 RT: 9.56 min Scan# 2635
 Delta R.T. 0.00 min
 Lab File: VV017720.D
 Acq: 29 Jul 2020 10:38

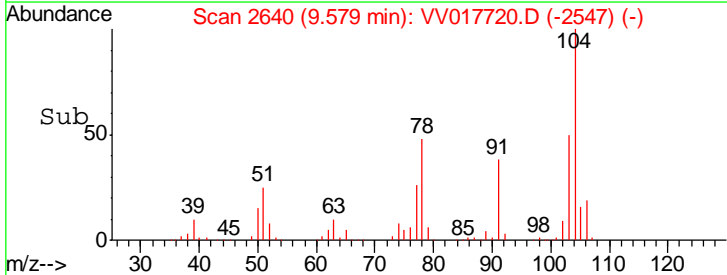
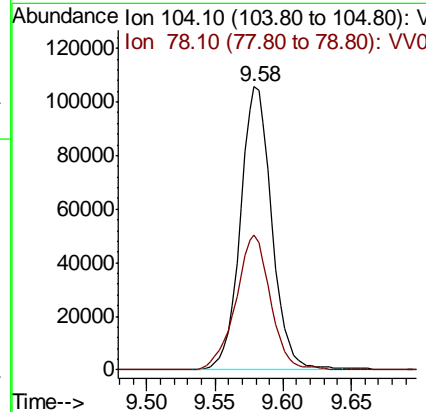
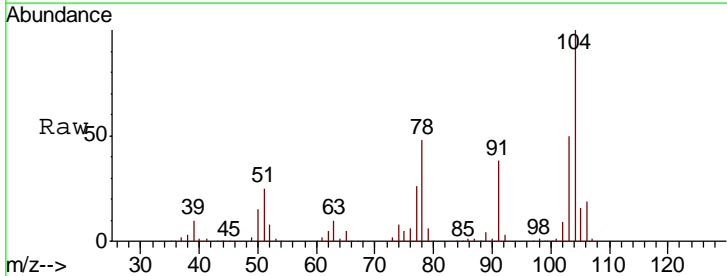
Instrument : MSVOA_V
 ClientSampled :

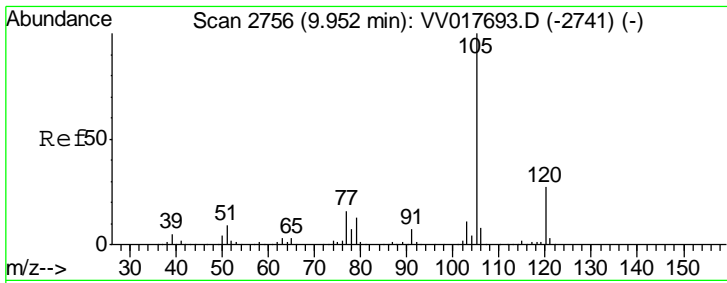
Tgt Ion	Resp	Lower	Upper
106	98309		
91	221.0	153.9	285.7



#57
 Styrene
 Concen: 5.222 ug/L
 RT: 9.58 min Scan# 2640
 Delta R.T. 0.00 min
 Lab File: VV017720.D
 Acq: 29 Jul 2020 10:38

Tgt Ion	Resp	Lower	Upper
104	168544		
78	47.7	34.0	63.2

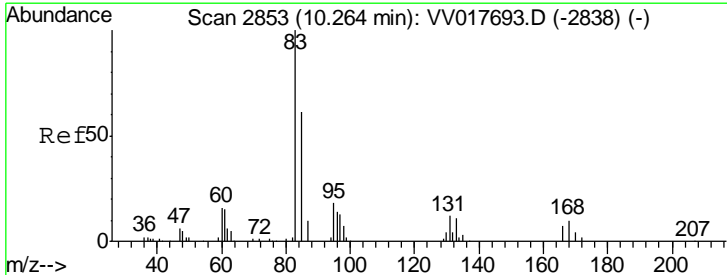
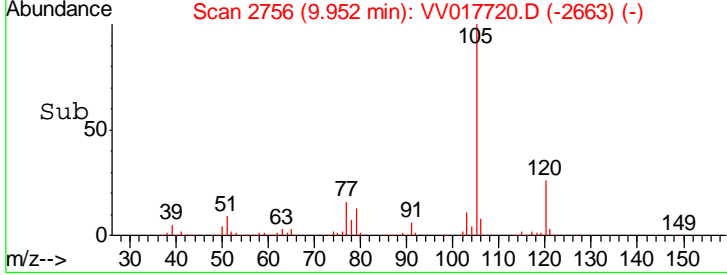
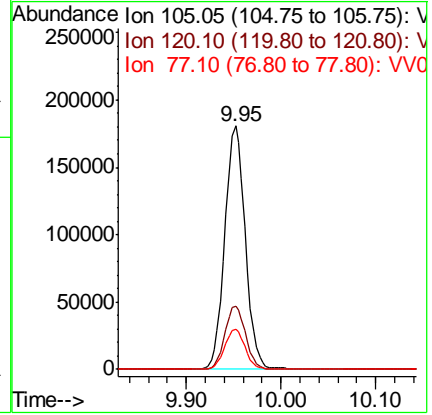
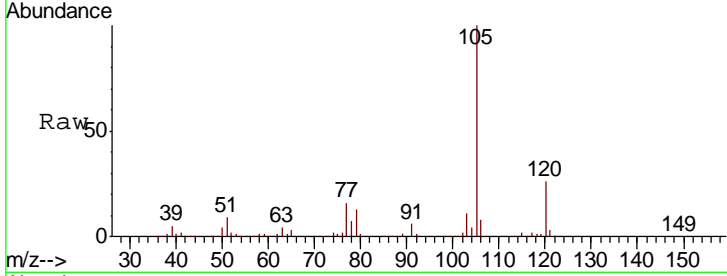




#58
 Isopropylbenzene
 Concen: 5.096 ug/L
 RT: 9.95 min Scan# 2756
 Delta R.T. 0.00 min
 Lab File: VV017720.D
 Acq: 29 Jul 2020 10:38

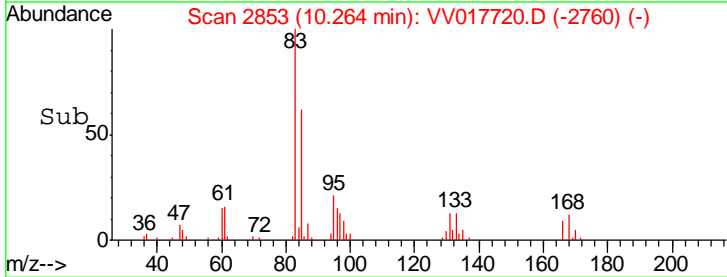
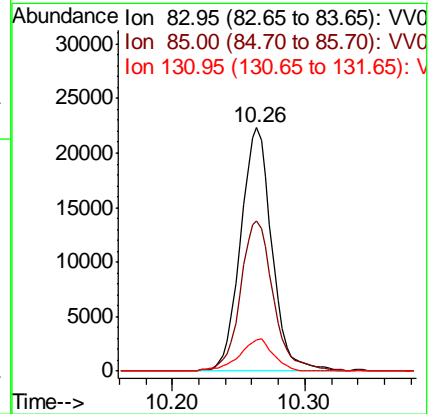
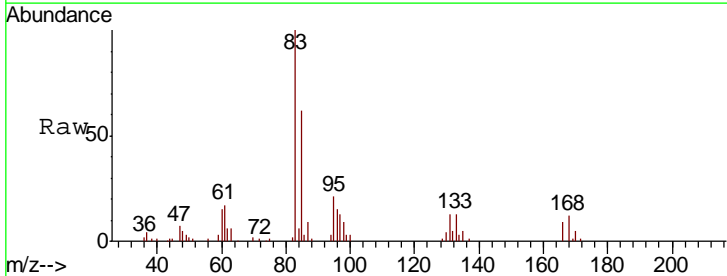
Instrument : MSVOA_V
 ClientSampled :

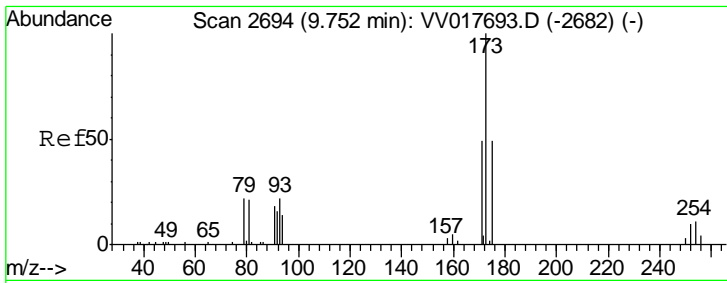
Tgt Ion	Resp	Lower	Upper
105	271920		
120	26.1	21.1	31.7
77	16.6	13.0	19.6



#60
 1,1,2,2-Tetrachloroethane
 Concen: 4.339 ug/L
 RT: 10.26 min Scan# 2853
 Delta R.T. 0.00 min
 Lab File: VV017720.D
 Acq: 29 Jul 2020 10:38

Tgt Ion	Resp	Lower	Upper
83	36516		
85	61.9	44.4	82.5
131	12.9	9.2	13.8

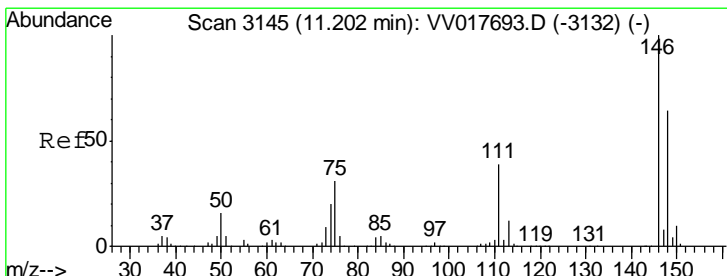
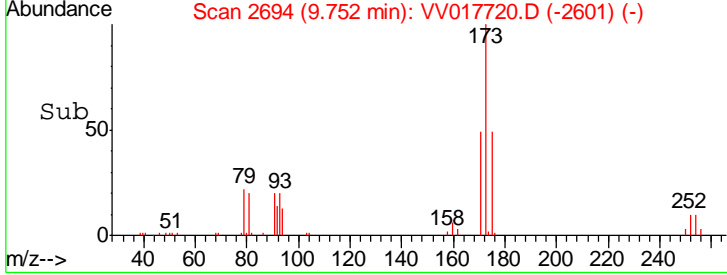
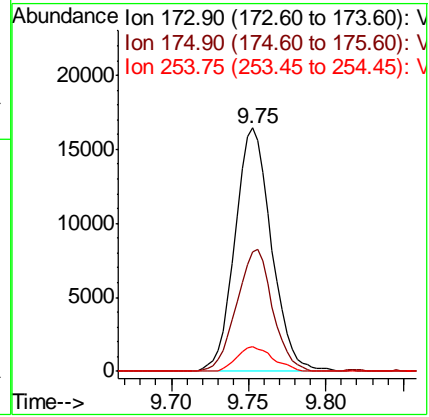
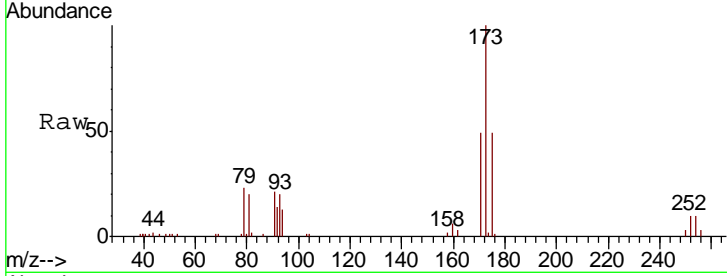




#62
 Bromoform
 Concen: 4.910 ug/L
 RT: 9.75 min Scan# 2694
 Delta R.T. 0.00 min
 Lab File: VV017720.D
 Acq: 29 Jul 2020 10:38

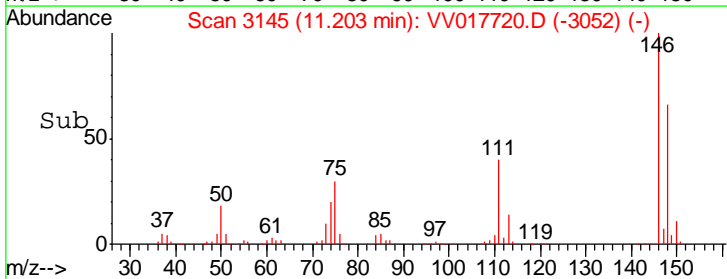
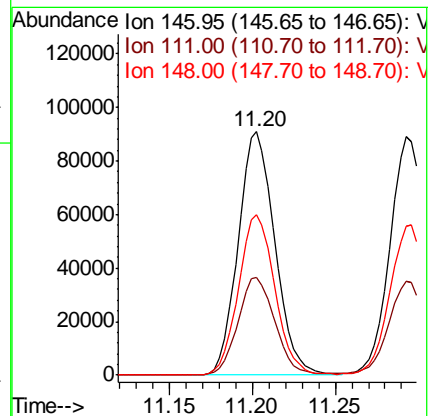
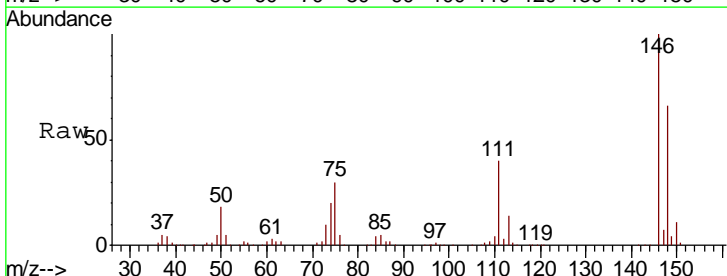
Instrument :
 MSVOA_V
 ClientSampled :

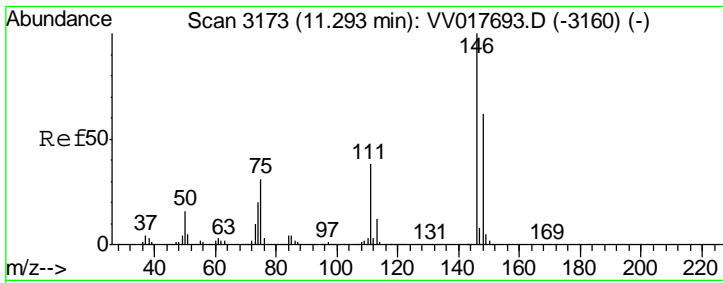
Tgt Ion	Resp	Lower	Upper
173	100		
175	49.5	39.6	59.4
254	9.9	8.4	12.6



#63
 1,3-Dichlorobenzene
 Concen: 5.094 ug/L
 RT: 11.20 min Scan# 3145
 Delta R.T. 0.00 min
 Lab File: VV017720.D
 Acq: 29 Jul 2020 10:38

Tgt Ion	Resp	Lower	Upper
146	100		
111	40.2	27.3	50.7
148	66.0	45.6	84.6

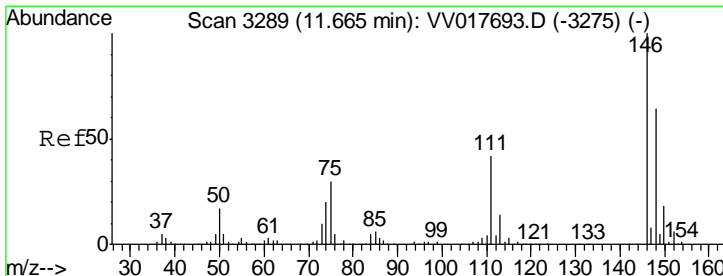
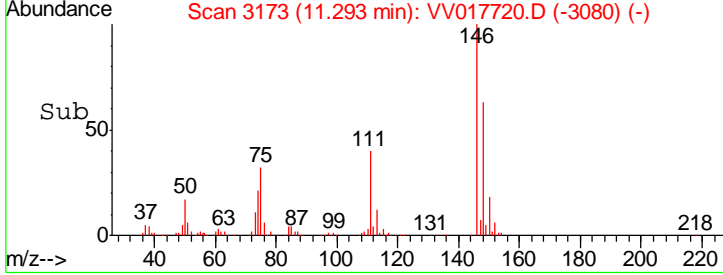
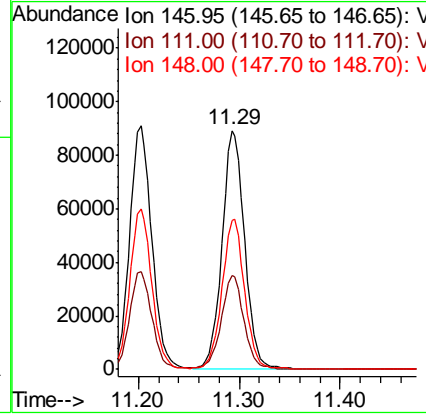
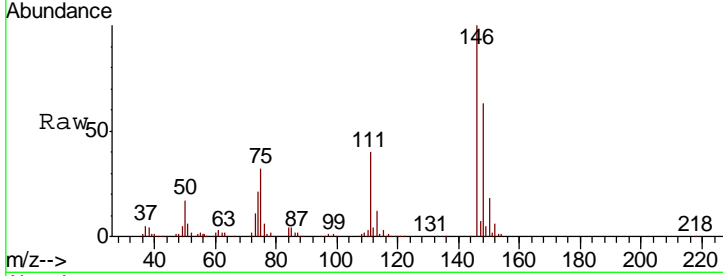




#64
 1,4-Dichlorobenzene
 Concen: 5.072 ug/L
 RT: 11.29 min Scan# 3173
 Delta R.T. 0.00 min
 Lab File: VV017720.D
 Acq: 29 Jul 2020 10:38

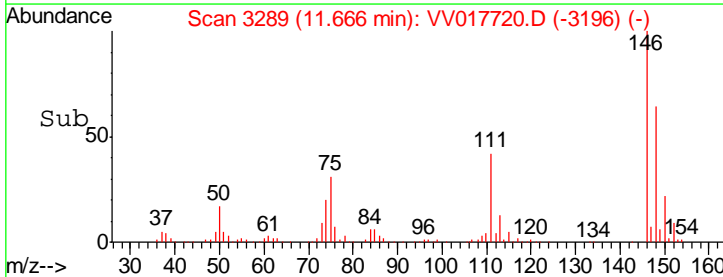
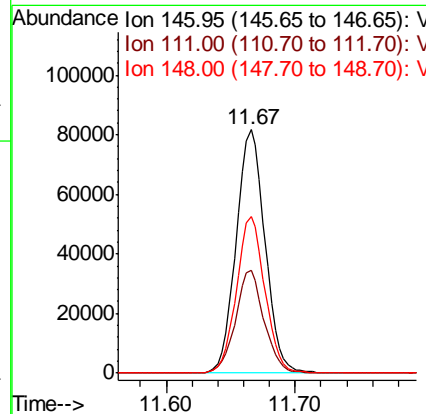
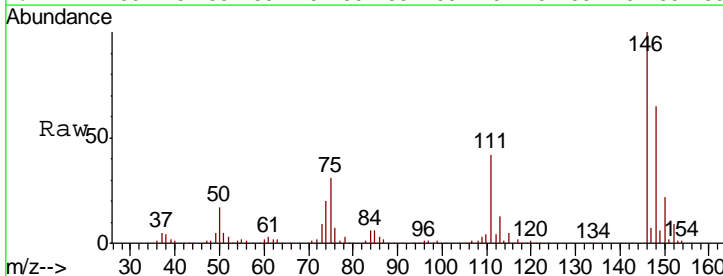
Instrument :
 MSVOA_V
 ClientSampled :

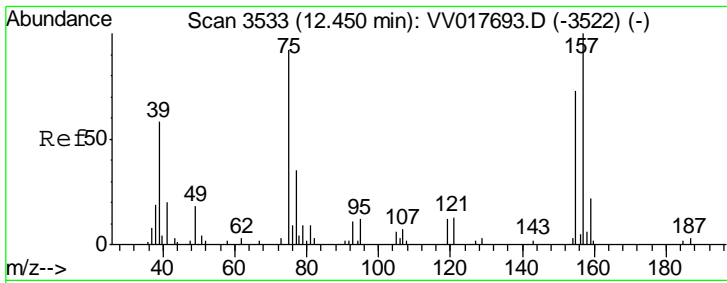
Tgt Ion	Resp	Lower	Upper
146	139749		
111	39.6	27.4	51.0
148	62.6	43.8	81.4



#66
 1,2-Dichlorobenzene
 Concen: 5.067 ug/L
 RT: 11.67 min Scan# 3289
 Delta R.T. 0.00 min
 Lab File: VV017720.D
 Acq: 29 Jul 2020 10:38

Tgt Ion	Resp	Lower	Upper
146	126733		
111	42.2	33.0	49.4
148	64.6	49.9	74.9

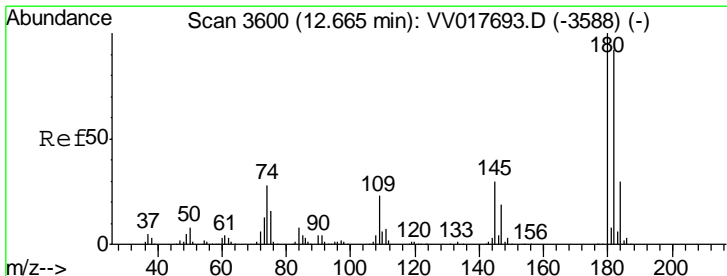
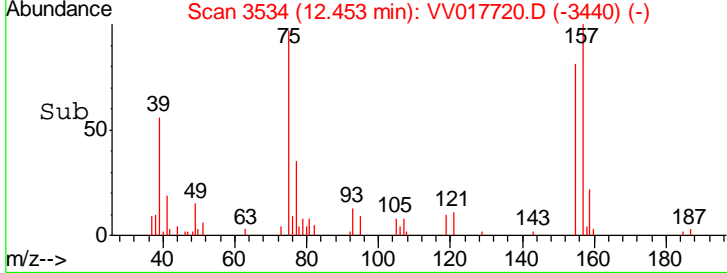
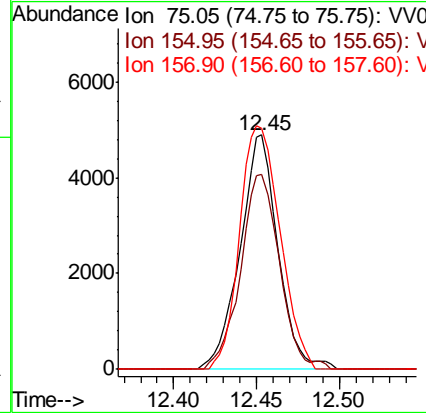
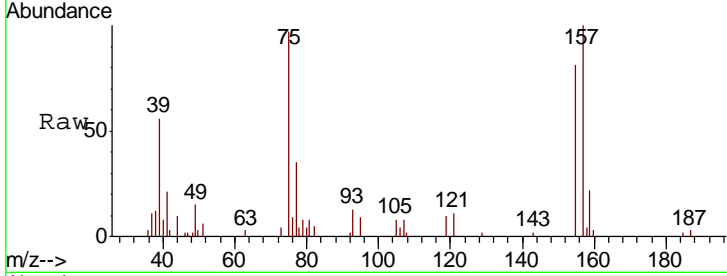




#67
 1,2-Dibromo-3-chloropropane
 Concen: 4.975 ug/L
 RT: 12.45 min Scan# 3534
 Delta R.T. 0.00 min
 Lab File: VV017720.D
 Acq: 29 Jul 2020 10:38

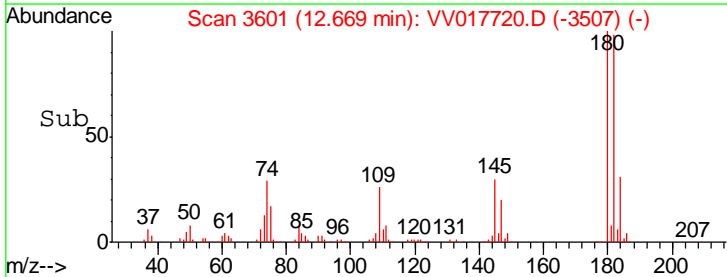
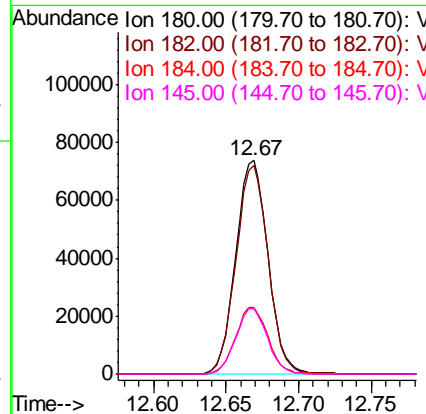
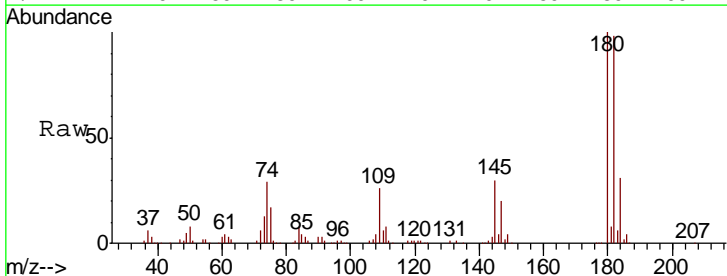
Instrument : MSVOA_V
 ClientSampled :

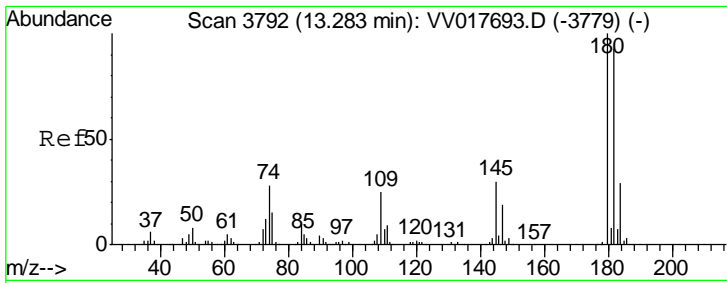
Tgt Ion	Resp	Lower	Upper
75	100		
155	83.3	68.7	103.1
157	103.2	87.8	131.8



#68
 1,3,5-Trichlorobenzene
 Concen: 5.111 ug/L
 RT: 12.67 min Scan# 3601
 Delta R.T. 0.00 min
 Lab File: VV017720.D
 Acq: 29 Jul 2020 10:38

Tgt Ion	Resp	Lower	Upper
180	100		
182	97.2	77.1	115.7
184	31.3	25.2	37.8
145	30.2	24.1	36.1

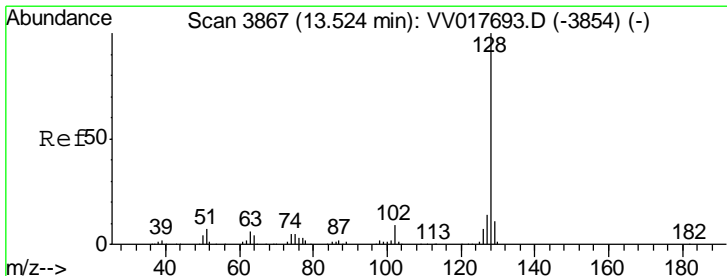
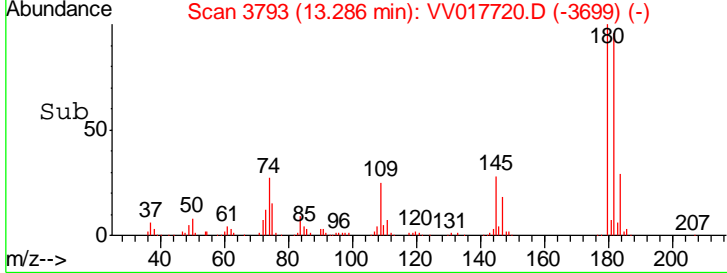
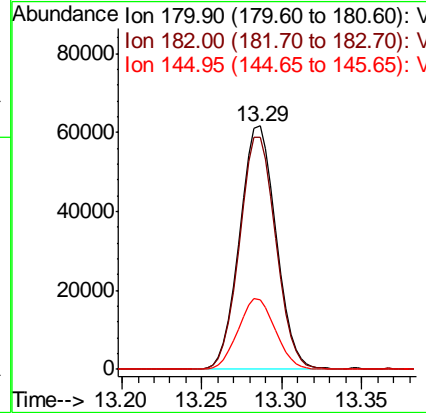
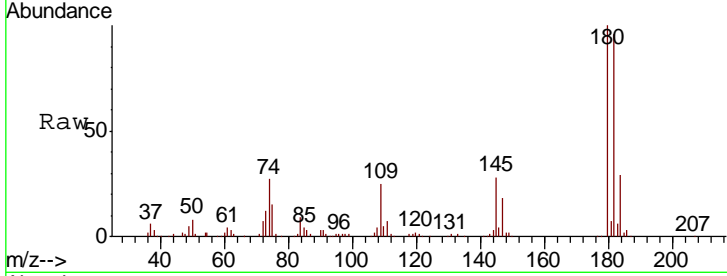




#69
 1,2,4-trichlorobenzene
 Concen: 5.113 ug/L
 RT: 13.29 min Scan# 3793
 Delta R.T. 0.00 min
 Lab File: VV017720.D
 Acq: 29 Jul 2020 10:38

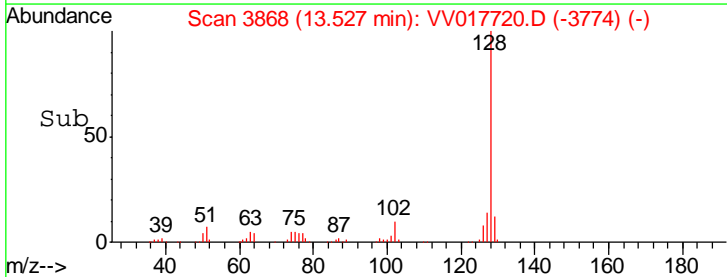
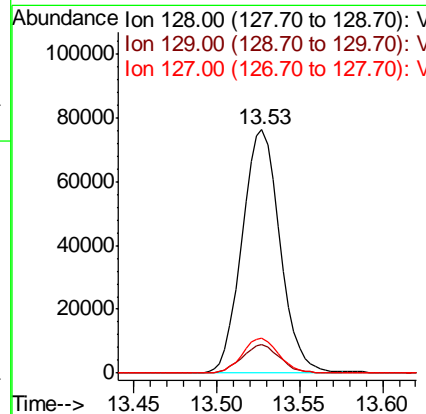
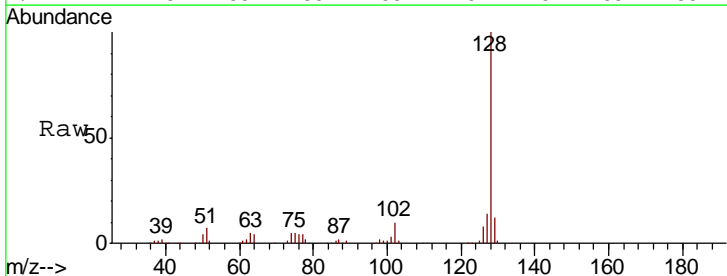
Instrument : MSVOA_V
 ClientSampled :

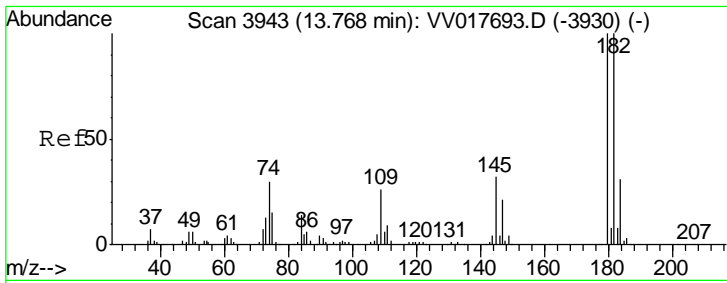
Tgt Ion	Resp	Lower	Upper
180	100		
182	95.4	75.4	113.2
145	29.6	24.2	36.2



#70
 Naphthalene
 Concen: 4.660 ug/L
 RT: 13.53 min Scan# 3868
 Delta R.T. 0.00 min
 Lab File: VV017720.D
 Acq: 29 Jul 2020 10:38

Tgt Ion	Resp	Lower	Upper
128	100		
129	11.8	9.1	13.7
127	13.9	11.0	16.6





#71
 1,2,3-Trichlorobenzene
 Concen: 4.708 ug/L
 RT: 13.77 min Scan# 3943
 Delta R.T. 0.00 min
 Lab File: VV017720.D
 Acq: 29 Jul 2020 10:38

Instrument : MSVOA_V
 ClientSampled :

Tot Ion	Resp	Lower	Upper
180	100		
182	99.8	74.2	111.4
145	35.5	26.0	39.0

