

Data Path : Z:\VOASRV\HPCHEM1\MSVOA V\DATA\VV073018\
 Data File : VV006773.D
 Acq On : 30 Jul 2018 20:03
 Operator : SY/MD
 Sample : J4225-04
 Misc : 25 mL/MSVOA V/WATER
 ALS Vial : 2 Sample Multiplier: 1

Instrument :
 MSVOA_V
 ClientSampleId :
 ESWP1

Quant Time: Aug 01 10:12:44 2018
 Quant Method : Z:\VOASRV\HPCHEM1\MSVOA_V\METHOD\SOMVTR072318WMA.M
 Quant Title : TRACE VOA SOM01.0
 QLast Update : Wed Aug 01 01:43:21 2018
 Response via : Initial Calibration

Internal Standards	R.T.	QIon	Response	Conc	Units	Dev(Min)
1) 1,4-Difluorobenzene	5.67	114	182582	5.00	ug/L	0.00
28) Chlorobenzene-d5	8.90	117	173493	5.00	ug/L	0.00
60) 1,4-Dichlorobenzene-d4	11.30	152	68761	5.00	ug/L	0.00

System Monitoring Compounds

4) Vinyl Chloride-d3	1.32	65	46683	4.91	ug/L	0.00
Spiked Amount	5.000	Range	40 - 130	Recovery	=	98.20%
7) Chloroethane-d5	1.57	69	41287	5.53	ug/L	0.00
Spiked Amount	5.000	Range	65 - 130	Recovery	=	110.60%
11) 1,1-Dichloroethene-d2	2.13	63	65719	3.53	ug/L	0.00
Spiked Amount	5.000	Range	60 - 125	Recovery	=	70.60%
20) 2-Butanone-d5	3.95	46	165205	55.64	ug/L	0.00
Spiked Amount	50.000	Range	40 - 130	Recovery	=	111.28%
24) Chloroform-d	4.41	84	97431	5.46	ug/L	0.00
Spiked Amount	5.000	Range	70 - 125	Recovery	=	109.20%
26) 1,2-Dichloroethane-d4	5.09	65	51739	5.95	ug/L	0.00
Spiked Amount	5.000	Range	70 - 130	Recovery	=	119.00%
32) Benzene-d6	5.10	84	193428	5.42	ug/L	0.00
Spiked Amount	5.000	Range	70 - 125	Recovery	=	108.40%
36) 1,2-Dichloropropane-d6	6.12	67	65261	5.42	ug/L	0.00
Spiked Amount	5.000	Range	60 - 140	Recovery	=	108.40%
41) Toluene-d8	7.36	98	154839	4.96	ug/L	0.00
Spiked Amount	5.000	Range	70 - 130	Recovery	=	99.20%
43) trans-1,3-Dichloropropene-	7.67	79	19442	4.94	ug/L	0.00
Spiked Amount	5.000	Range	55 - 130	Recovery	=	98.80%
46) 2-Hexanone-d5	8.14	63	117859	47.35	ug/L	0.00
Spiked Amount	50.000	Range	45 - 130	Recovery	=	94.70%
57) 1,1,2,2-Tetrachloroethane-	10.27	84	51796	5.27	ug/L	0.00
Spiked Amount	5.000	Range	65 - 120	Recovery	=	105.40%
64) 1,2-Dichlorobenzene-d4	11.68	152	58003	5.66	ug/L	0.00
Spiked Amount	5.000	Range	80 - 120	Recovery	=	113.20%

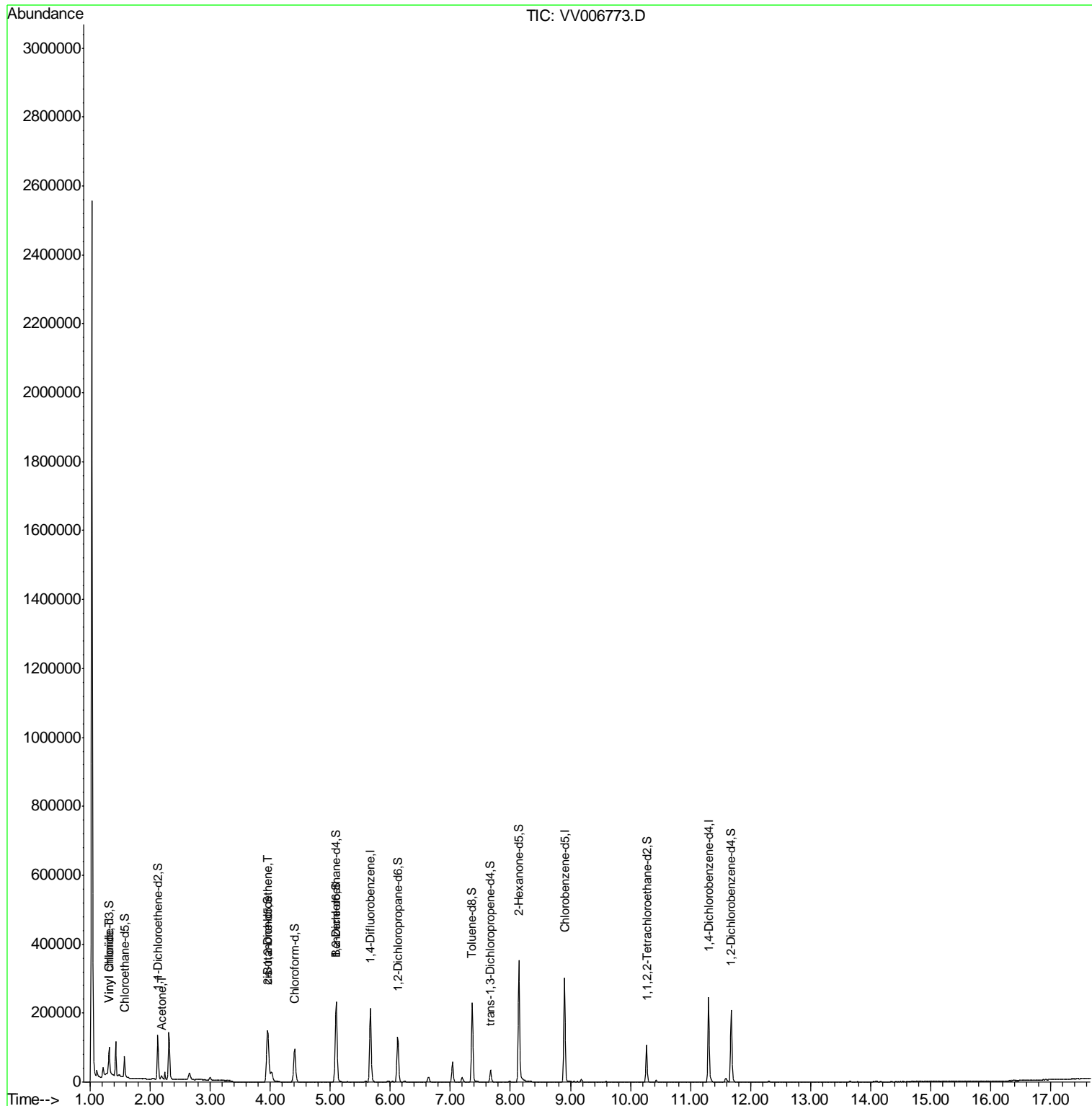
Target Compounds	R.T.	QIon	Response	Conc	Units	Ovalue
5) Vinyl chloride	1.32	62	6200	0.35	ug/L	# 1
13) Acetone	2.19	43	9608	5.09	ug/L	94
22) cis-1,2-Dichloroethene	3.96	96	29787	2.20	ug/L	99

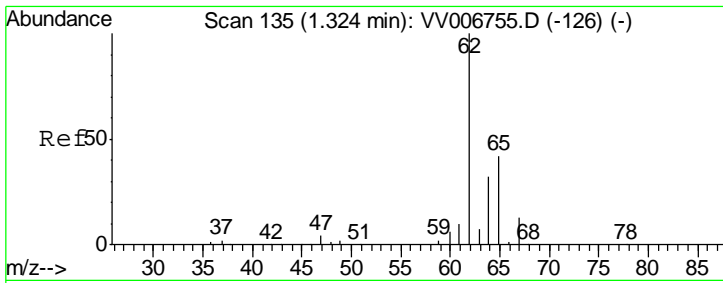
(#) = qualifier out of range (m) = manual integration (+) = signals summed

Data Path : Z:\VOASRV\HPCHEM1\MSVOA V\DATA\VV073018\
 Data File : VV006773.D
 Acq On : 30 Jul 2018 20:03
 Operator : SY/MD
 Sample : J4225-04
 Misc : 25 mL/MSVOA V/WATER
 ALS Vial : 2 Sample Multiplier: 1

Instrument :
 MSVOA_V
 ClientSampleId :
 ESWP1

Quant Time: Aug 01 10:12:44 2018
 Quant Method : Z:\VOASRV\HPCHEM1\MSVOA_V\METHOD\SOMVTR072318WMA.M
 Quant Title : TRACE VOA SOM01.0
 QLast Update : Wed Aug 01 01:43:21 2018
 Response via : Initial Calibration

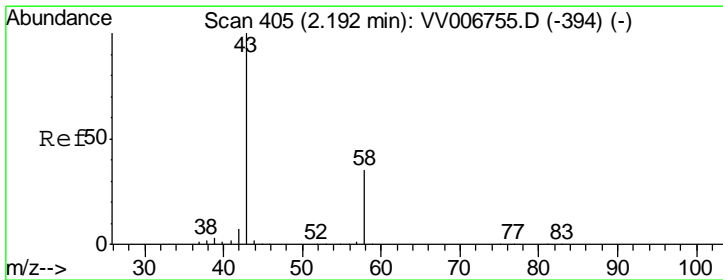
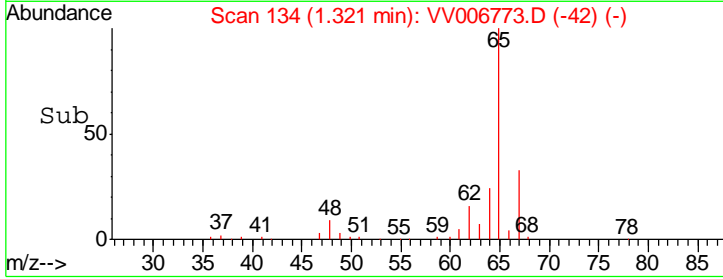
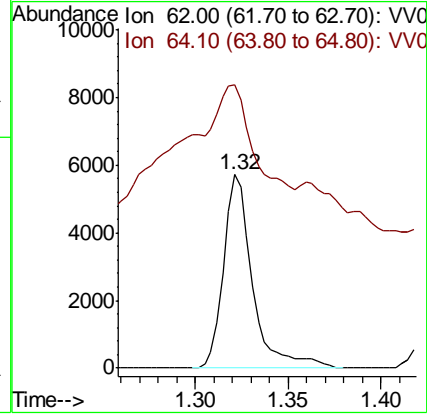
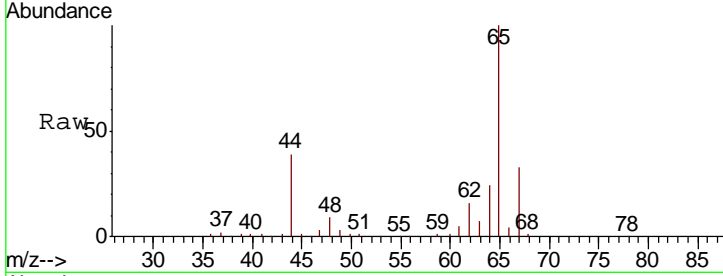




#5
 Vinyl chloride
 Concen: 0.35 ug/L
 RT: 1.32 min Scan# 134
 Delta R.T. -0.00 min
 Lab File: VV006773.D
 Acq: 30 Jul 2018 20:03

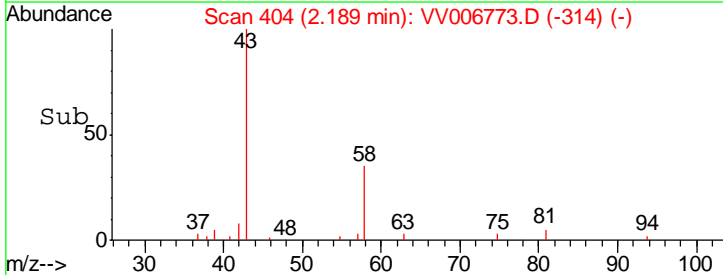
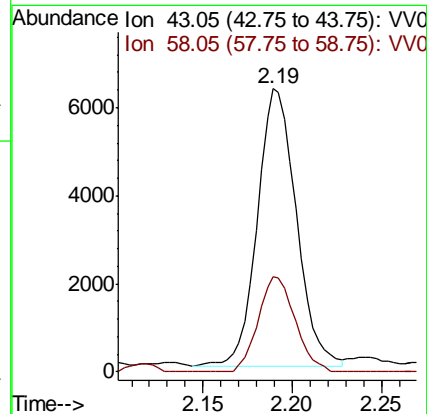
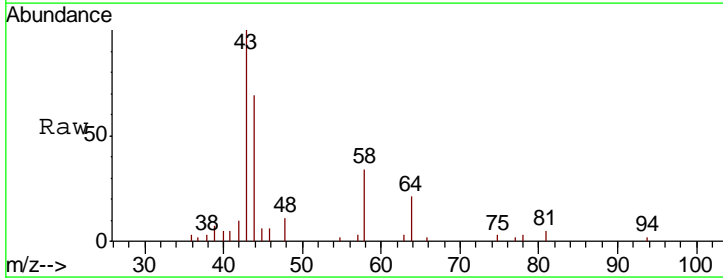
Instrument :
 MSVOA_V
 ClientSampled :
 ESWP1

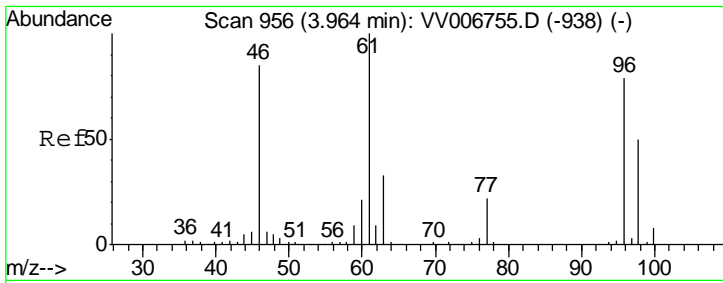
Tgt Ion: 62 Resp: 6200
 Ion Ratio Lower Upper
 62 100
 64 146.3 26.5 49.3#



#13
 Acetone
 Concen: 5.09 ug/L
 RT: 2.19 min Scan# 404
 Delta R.T. -0.01 min
 Lab File: VV006773.D
 Acq: 30 Jul 2018 20:03

Tgt Ion: 43 Resp: 9608
 Ion Ratio Lower Upper
 43 100
 58 32.4 0.0 71.4





#22
 cis-1,2-Dichloroethene
 Concen: 2.20 ug/L
 RT: 3.96 min Scan# 956
 Delta R.T. -0.00 min
 Lab File: VV006773.D
 Acq: 30 Jul 2018 20:03

Instrument :
 MSVOA_V
 ClientSampled :
 ESWP1

Tot Ion: 96 Resp: 29787

Ion	Ratio	Lower	Upper
96	100		
61	123.8	85.5	158.9
68	0.0	0.0	0.0

