

Data Path : Z:\VOASRV\HPCHEM1\MSVOA V\DATA\VV073118\  
 Data File : VV006796.D  
 Acq On : 31 Jul 2018 19:53  
 Operator : SY/MD  
 Sample : J4209-18  
 Misc : 25 mL/MSVOA V/WATER  
 ALS Vial : 23 Sample Multiplier: 1

Instrument :  
 MSVOA\_V  
 ClientSampled :

Quant Time: Aug 01 01:47:43 2018  
 Quant Method : Z:\VOASRV\HPCHEM1\MSVOA\_V\METHOD\SOMVTR072318WMA.M  
 Quant Title : TRACE VOA SOM01.0  
 QLast Update : Wed Aug 01 01:43:21 2018  
 Response via : Initial Calibration

Internal Standards	R.T.	QIon	Response	Conc	Units	Dev(Min)
1) 1,4-Difluorobenzene	5.67	114	205840	5.00	ug/L	0.00
28) Chlorobenzene-d5	8.90	117	188518	5.00	ug/L	0.00
60) 1,4-Dichlorobenzene-d4	11.30	152	80646	5.00	ug/L	0.00

System Monitoring Compounds

4) Vinyl Chloride-d3	1.32	65	41127	3.84	ug/L	0.00
Spiked Amount	5.000	Range	40 - 130	Recovery	=	76.80%
7) Chloroethane-d5	1.58	69	42896	5.10	ug/L	0.00
Spiked Amount	5.000	Range	65 - 130	Recovery	=	102.00%
11) 1,1-Dichloroethene-d2	2.13	63	63971	3.04	ug/L	0.00
Spiked Amount	5.000	Range	60 - 125	Recovery	=	60.80%
20) 2-Butanone-d5	3.95	46	172124	51.42	ug/L	0.00
Spiked Amount	50.000	Range	40 - 130	Recovery	=	102.84%
24) Chloroform-d	4.40	84	104669	5.21	ug/L	0.00
Spiked Amount	5.000	Range	70 - 125	Recovery	=	104.20%
26) 1,2-Dichloroethane-d4	5.09	65	53514	5.46	ug/L	0.00
Spiked Amount	5.000	Range	70 - 130	Recovery	=	109.20%
32) Benzene-d6	5.10	84	204646	5.28	ug/L	0.00
Spiked Amount	5.000	Range	70 - 125	Recovery	=	105.60%
36) 1,2-Dichloropropane-d6	6.12	67	71525	5.46	ug/L	0.00
Spiked Amount	5.000	Range	60 - 140	Recovery	=	109.20%
41) Toluene-d8	7.37	98	165720	4.89	ug/L	0.00
Spiked Amount	5.000	Range	70 - 130	Recovery	=	97.80%
43) trans-1,3-Dichloropropene-	7.67	79	22088	5.17	ug/L	0.00
Spiked Amount	5.000	Range	55 - 130	Recovery	=	103.40%
46) 2-Hexanone-d5	8.14	63	135048	49.93	ug/L	0.00
Spiked Amount	50.000	Range	45 - 130	Recovery	=	99.86%
57) 1,1,2,2-Tetrachloroethane-	10.27	84	55785	5.22	ug/L	0.00
Spiked Amount	5.000	Range	65 - 120	Recovery	=	104.40%
64) 1,2-Dichlorobenzene-d4	11.68	152	65214	5.43	ug/L	0.00
Spiked Amount	5.000	Range	80 - 120	Recovery	=	108.60%

Target Compounds

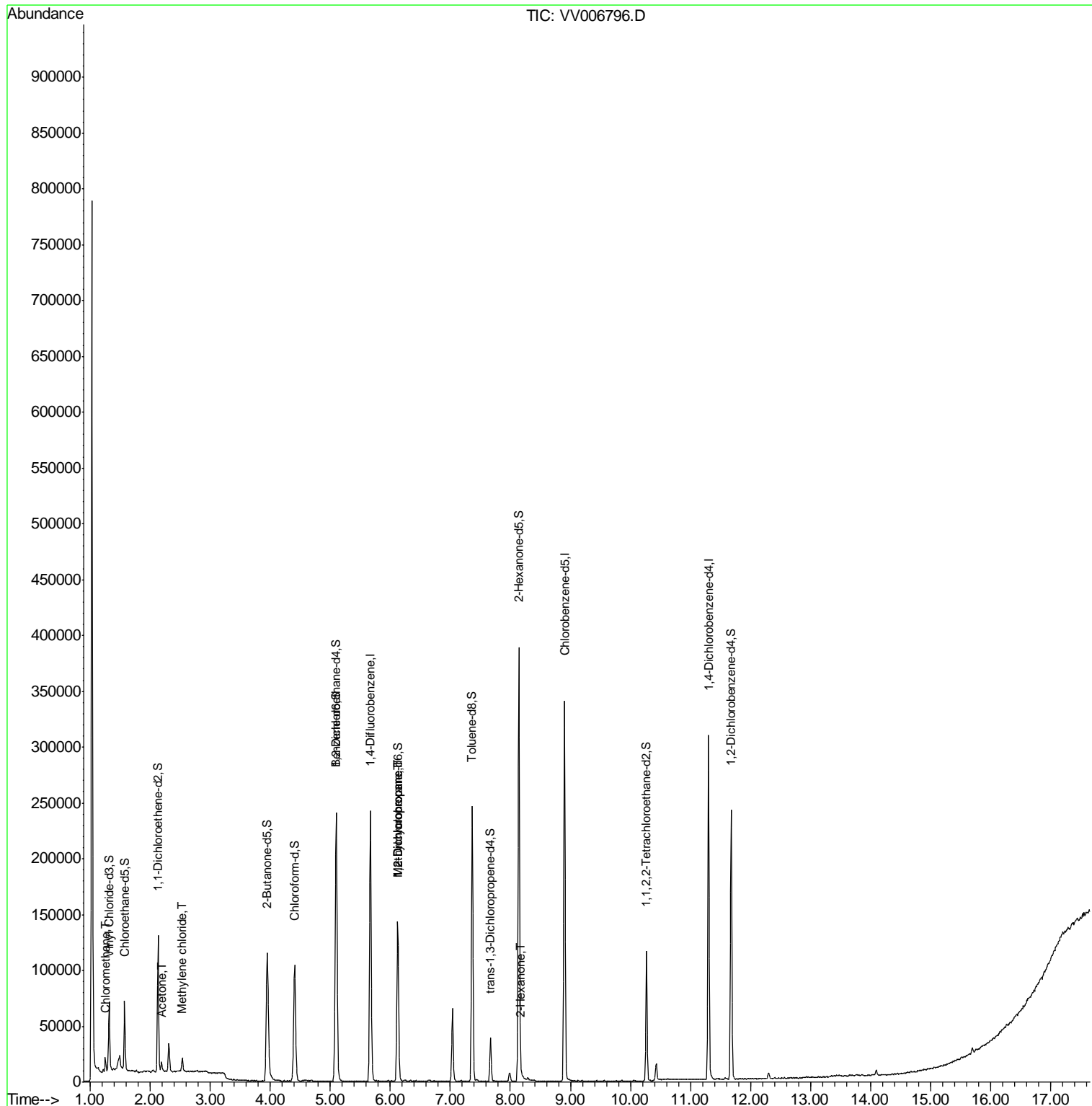
Target Compounds	R.T.	QIon	Response	Conc	Units	Ovalue
3) Chloromethane	1.25	50	11037	0.702	ug/L	96
13) Acetone	2.19	43	6242	2.931	ug/L	96
16) Methylene chloride	2.54	84	4918	0.318	ug/L	96
35) Methylcyclohexane	6.12	83	16656	0.697	ug/L #	18
37) 1,2-Dichloropropane	6.12	63	7125	0.490	ug/L #	86
48) 2-Hexanone	8.18	43	1561	0.280	ug/L #	76

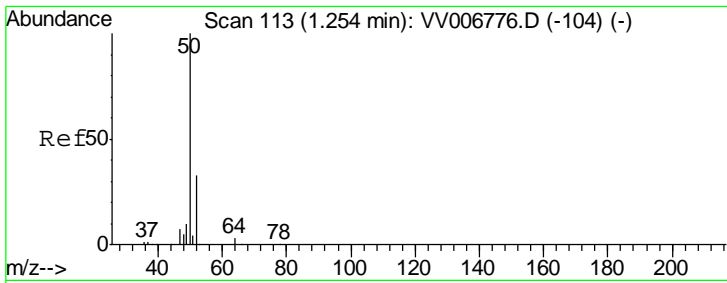
(#) = qualifier out of range (m) = manual integration (+) = signals summed

Data Path : Z:\VOASRV\HPCHEM1\MSVOA V\DATA\VV073118\  
 Data File : VV006796.D  
 Acq On : 31 Jul 2018 19:53  
 Operator : SY/MD  
 Sample : J4209-18  
 Misc : 25 mL/MSVOA V/WATER  
 ALS Vial : 23 Sample Multiplier: 1

Instrument :  
 MSVOA\_V  
 ClientSampled :

Quant Time: Aug 01 01:47:43 2018  
 Quant Method : Z:\VOASRV\HPCHEM1\MSVOA\_V\METHOD\SOMVTR072318WMA.M  
 Quant Title : TRACE VOA SOM01.0  
 QLast Update : Wed Aug 01 01:43:21 2018  
 Response via : Initial Calibration

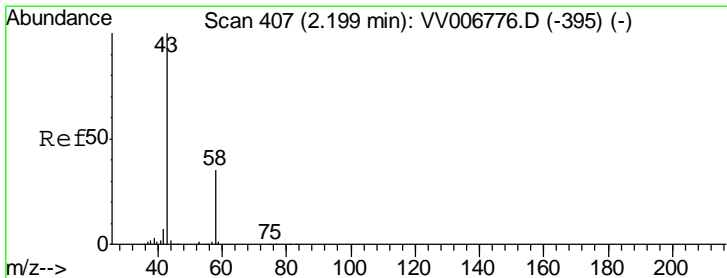
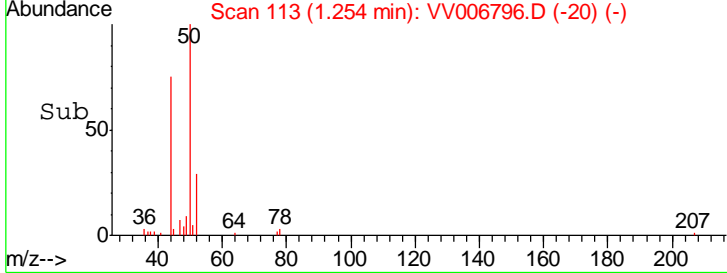
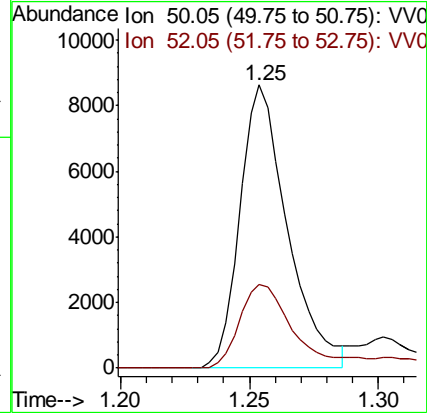
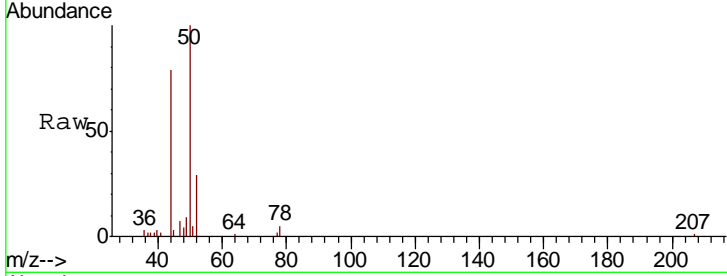




#3  
 Chloromethane  
 Concen: 0.702 ug/L  
 RT: 1.25 min Scan# 113  
 Delta R.T. -0.00 min  
 Lab File: VV006796.D  
 Acq: 31 Jul 2018 19:53

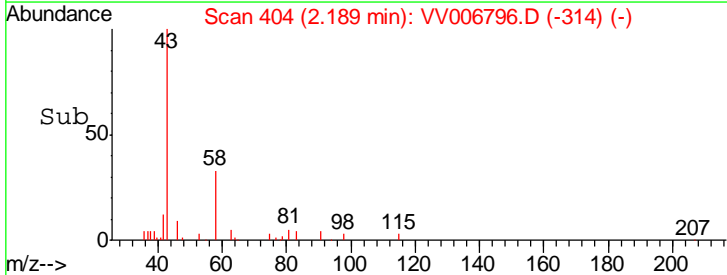
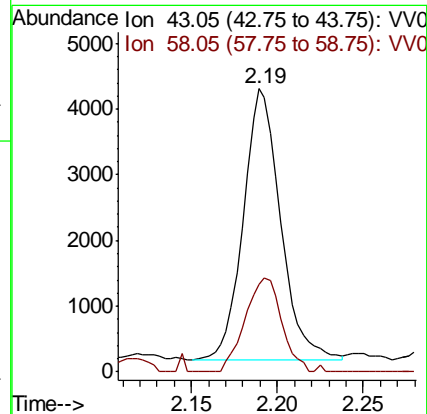
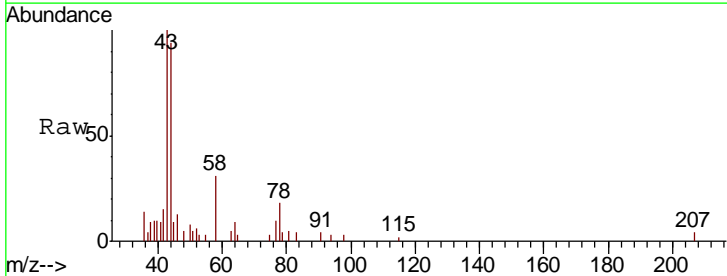
Instrument : MSVOA\_V  
 ClientSampled :

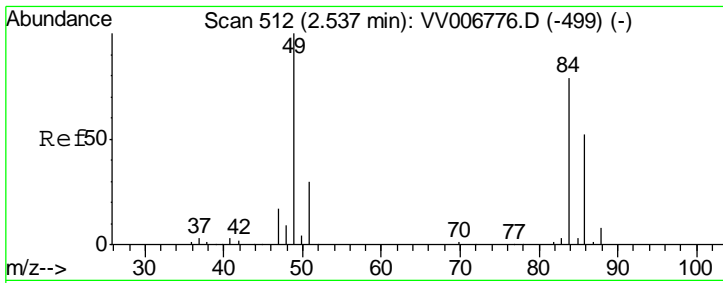
Tgt Ion	Resp	Lower	Upper
50	11037		
52	29.5	22.1	41.1



#13  
 Acetone  
 Concen: 2.931 ug/L  
 RT: 2.19 min Scan# 404  
 Delta R.T. -0.01 min  
 Lab File: VV006796.D  
 Acq: 31 Jul 2018 19:53

Tgt Ion	Resp	Lower	Upper
43	6242		
58	33.6	0.0	71.4

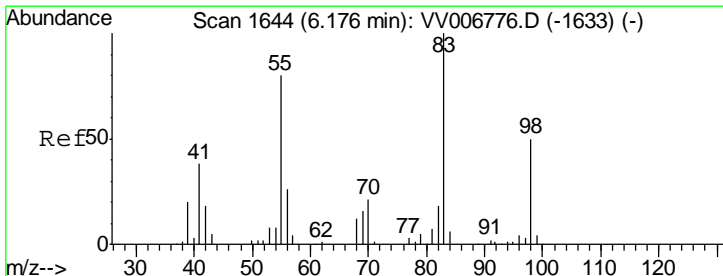
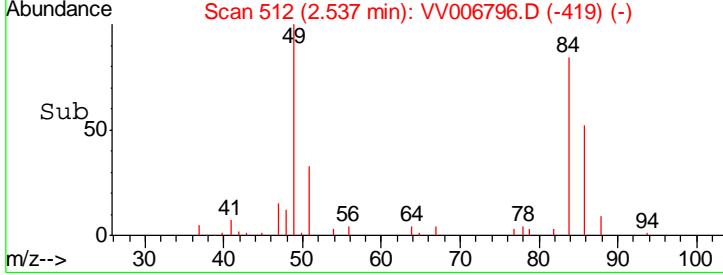
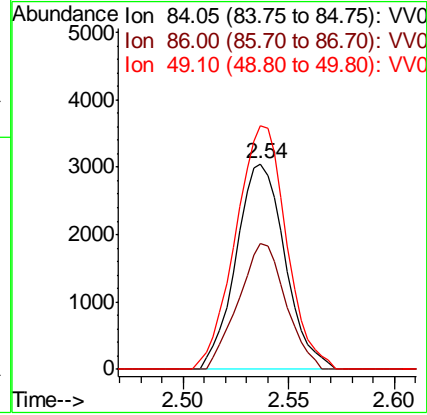
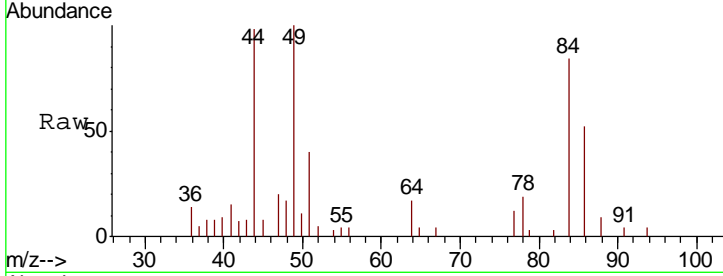




#16  
 Methylene chloride  
 Concen: 0.318 ug/L  
 RT: 2.54 min Scan# 512  
 Delta R.T. -0.00 min  
 Lab File: VV006796.D  
 Acq: 31 Jul 2018 19:53

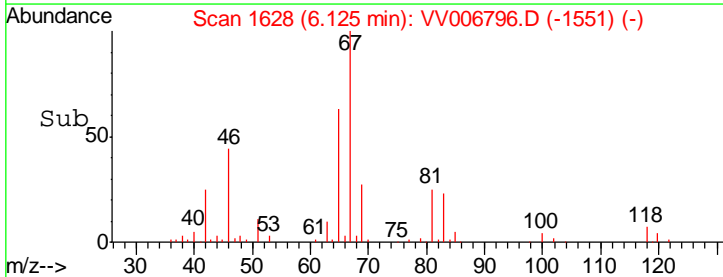
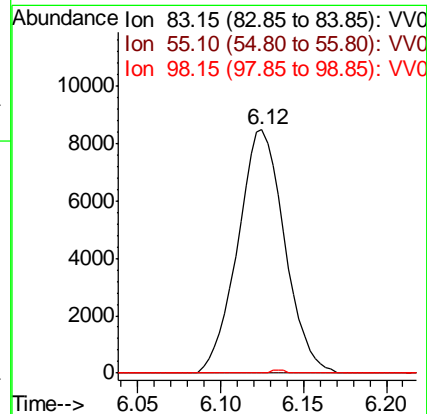
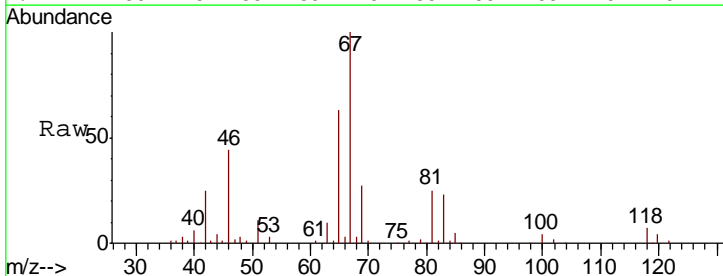
Instrument :  
 MSVOA\_V  
 ClientSampled :

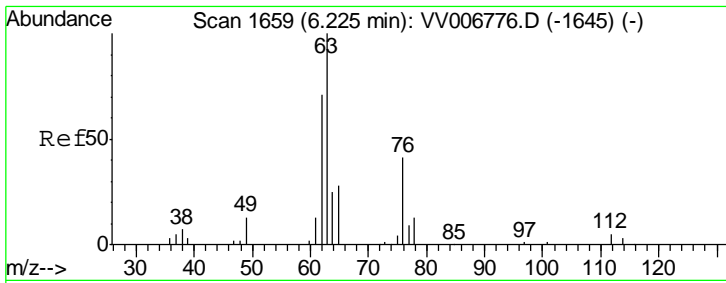
Tgt Ion	Resp	Lower	Upper
84	4918		
86	61.5	44.7	83.1
49	118.6	86.7	160.9



#35  
 Methylcyclohexane  
 Concen: 0.697 ug/L  
 RT: 6.12 min Scan# 1628  
 Delta R.T. -0.05 min  
 Lab File: VV006796.D  
 Acq: 31 Jul 2018 19:53

Tgt Ion	Resp	Lower	Upper
83	16656		
55	0.0	61.9	92.9#
98	0.4	39.7	59.5#

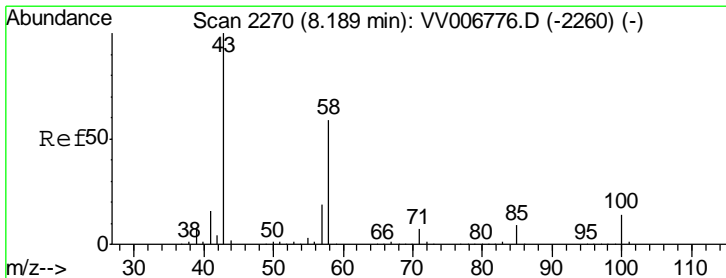
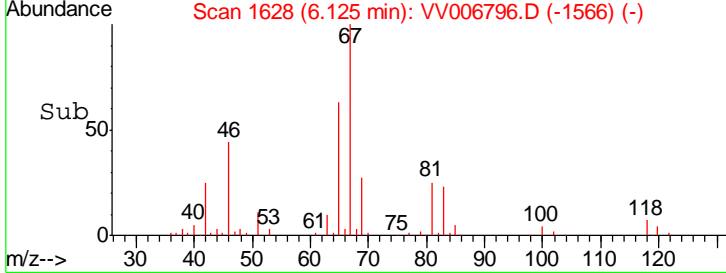
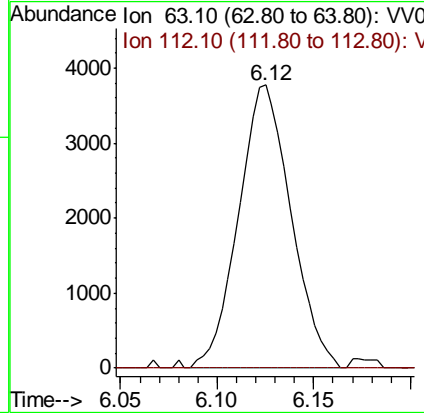
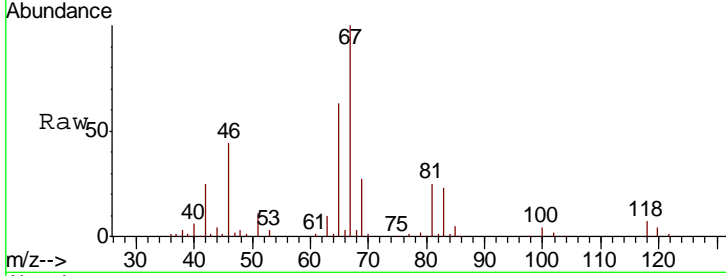




#37  
 1,2-Dichloropropane  
 Concen: 0.490 ug/L  
 RT: 6.12 min Scan# 1628  
 Delta R.T. -0.10 min  
 Lab File: VV006796.D  
 Acq: 31 Jul 2018 19:53

Instrument :  
 MSVOA\_V  
 ClientSampled :

Tgt Ion	Resp	Lower	Upper
63	100		
112	0.0	3.8	5.6#



#48  
 2-Hexanone  
 Concen: 0.280 ug/L  
 RT: 8.18 min Scan# 2268  
 Delta R.T. -0.01 min  
 Lab File: VV006796.D  
 Acq: 31 Jul 2018 19:53

Tgt Ion	Resp	Lower	Upper
43	100		
58	38.8	47.2	70.8#
57	23.1	16.1	24.1
100	0.0	11.1	16.7#

