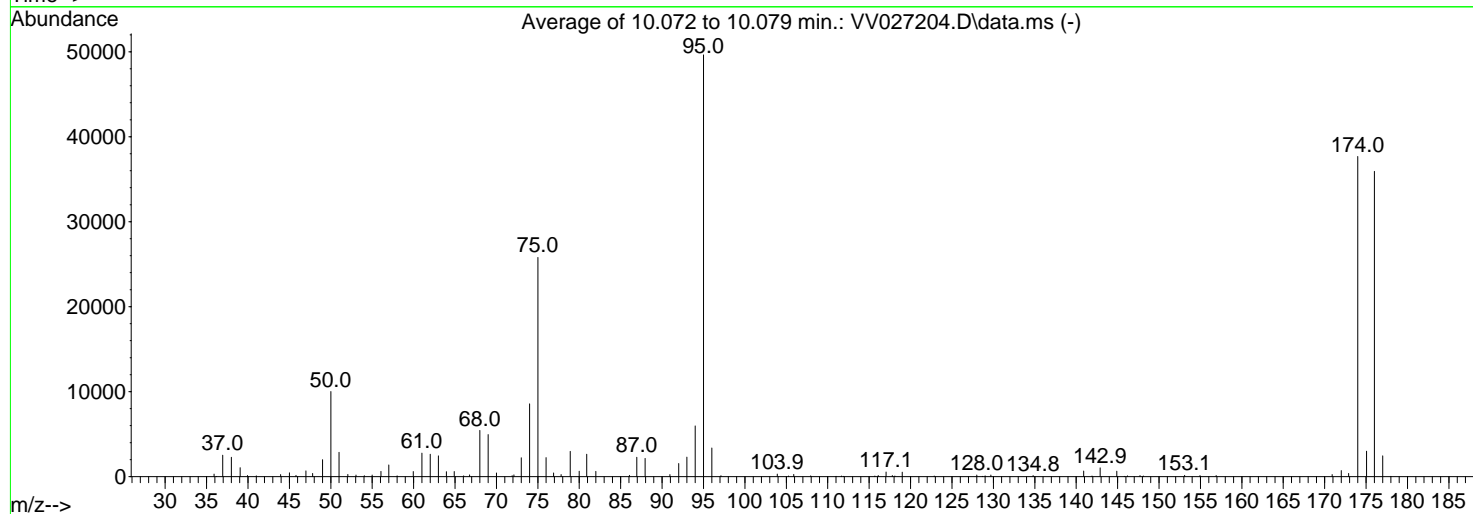
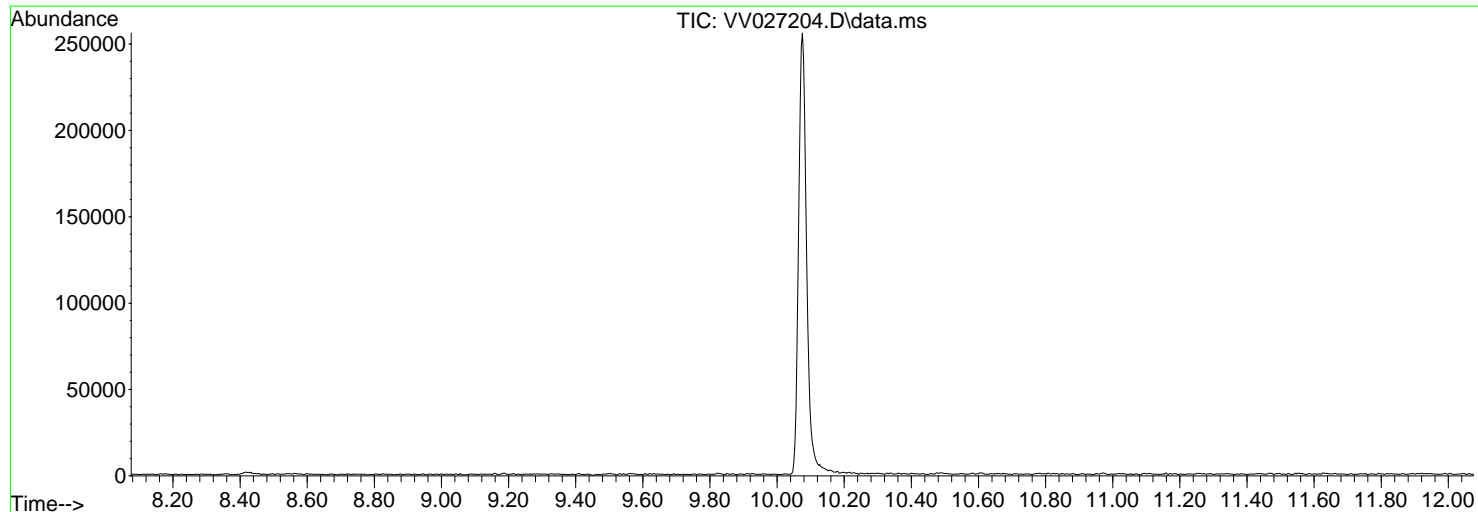


Data Path : Z:\voasrv\HPCHEM1\MSVOA\_V\Data\VV080422\  
 Data File : VV027204.D  
 Acq On : 04 Aug 2022 10:52  
 Operator : SY/MD  
 Sample : BFB305  
 Misc : 5.0mL/MSVOA\_V/WATER  
 ALS Vial : 1 Sample Multiplier: 1

Instrument :  
 MSVOA\_V  
 ClientSampleId :  
 BFB305

Integration File: LSCINT.P

Method : Z:\voasrv\HPCHEM1\MSVOA\_V\Method\SFAMVLM080422WMA.M  
 Title : VOC Analysis  
 Last Update : Fri Aug 05 02:29:34 2022



AutoFind: Scans 2809, 2810, 2811; Background Corrected with Scan 2798

Target Mass	Rel. to Mass	Lower Limit%	Upper Limit%	Rel. Abn%	Raw Abn	Result Pass/Fail
50	95	15	40	20.2	10026	PASS
75	95	30	80	52.0	25800	PASS
95	95	100	100	100.0	49640	PASS
96	95	5	9	6.8	3371	PASS
173	174	0.00	2	1.0	368	PASS
174	95	50	120	75.9	37685	PASS
175	174	5	9	7.9	2993	PASS
176	174	95	105	95.4	35939	PASS
177	176	5	10	6.8	2457	PASS

m/z	Abundance
36.20	132.0
40.10	259.0
43.00	116.0
43.90	426.0

**Instrument :**  
MSVOA\_V  
**ClientSampleId :**  
BFB305

m/z	Abundance
35.90	468.0
37.00	2582.0
38.00	2384.0
39.10	1039.0
39.90	451.0
41.00	141.0
43.00	126.0
44.00	634.0
45.00	483.0
45.80	183.0
47.00	713.0
47.80	359.0
49.00	2021.0
50.00	10278.0
51.00	2950.0
52.00	241.0
53.00	187.0
54.10	115.0
55.00	185.0
56.10	591.0
57.00	1448.0
58.00	103.0
59.90	636.0
61.00	2884.0
62.00	2497.0
63.00	2631.0
63.90	480.0
64.90	598.0
66.70	188.0
68.00	5545.0
69.00	5100.0
70.00	492.0
71.90	325.0
73.00	2334.0
74.00	8751.0
75.00	26216.0
76.00	2503.0
76.90	407.0
77.80	320.0
78.90	2928.0
80.00	656.0
80.90	2593.0
82.00	593.0
86.00	153.0
87.00	2270.0
87.90	2021.0
91.00	284.0
92.00	1622.0
93.00	2355.0
94.00	6010.0
95.00	49336.0
96.00	3327.0
97.10	105.0
103.90	294.0
105.30	130.0
105.90	261.0
108.00	103.0
111.00	104.0
111.60	102.0
117.10	536.0
118.10	218.0
119.00	558.0
128.00	156.0
129.00	170.0
129.60	132.0
134.70	125.0
140.90	659.0
141.90	119.0
142.90	1056.0
144.90	618.0
146.20	150.0
147.70	138.0
153.10	151.0
155.00	140.0
156.90	127.0
170.90	241.0
172.00	685.0
173.00	601.0
174.00	36520.0
175.00	3035.0
176.00	34816.0
177.00	2435.0
178.00	102.0

**Instrument :**  
MSVOA\_V  
**ClientSampleId :**  
BFB305

m/z	Abundance
35.90	450.0
37.00	2553.0
38.00	2332.0
39.10	1058.0
39.90	389.0
41.00	129.0
44.00	685.0
45.00	455.0
45.80	139.0
47.00	696.0
47.80	423.0
49.00	2039.0
50.00	10421.0
51.00	2946.0
52.10	290.0
53.10	213.0
54.00	119.0
55.00	180.0
56.10	633.0
57.00	1435.0
58.00	107.0
60.00	631.0
61.00	2885.0
62.00	2730.0
63.00	2517.0
64.00	615.0
64.90	625.0
66.00	134.0
66.70	219.0
68.00	5669.0
69.00	5043.0
70.00	434.0
72.10	309.0
73.00	2276.0
74.00	8772.0
75.00	26504.0
76.00	2312.0
76.90	445.0
77.80	239.0
78.90	3119.0
80.00	653.0
80.90	2690.0
82.00	657.0
86.10	149.0
87.00	2385.0
88.00	2171.0
90.90	236.0
92.00	1603.0
93.00	2360.0
94.00	6171.0
95.00	51224.0
96.00	3452.0
97.10	121.0
103.90	319.0
105.20	118.0
105.90	282.0
107.90	102.0
111.70	114.0
116.10	219.0
117.00	579.0
117.80	211.0
119.00	562.0
122.80	106.0
128.00	187.0
129.00	135.0
129.70	180.0
134.80	127.0
140.90	697.0
141.90	118.0
142.90	1062.0
144.90	651.0
146.20	114.0
147.70	158.0
148.10	112.0
153.10	180.0
154.90	144.0
156.90	124.0
170.90	247.0
172.00	736.0
174.00	38984.0
175.10	3155.0
176.00	37144.0
177.00	2506.0

Instrument :  
MSVOA\_V  
ClientSampleId :  
BFB305

m/z	Abundance
36.20	438.0
36.90	2440.0
38.00	2099.0
39.00	1070.0
39.90	351.0
44.10	715.0
45.00	424.0
45.80	121.0
47.00	646.0
47.80	372.0
49.00	1920.0
50.00	9378.0
51.00	2688.0
52.00	288.0
53.10	191.0
54.00	120.0
55.00	177.0
56.00	629.0
57.00	1247.0
58.00	101.0
60.00	541.0
61.00	2551.0
62.00	2705.0
63.00	2182.0
64.00	647.0
64.90	613.0
66.10	147.0
66.80	229.0
68.00	5103.0
69.00	4727.0
70.00	356.0
72.10	299.0
73.00	2082.0
74.00	8187.0
75.00	24680.0
76.00	1923.0
76.90	431.0
77.90	184.0
78.90	2902.0
80.00	618.0
80.90	2634.0
82.00	617.0
86.10	162.0
86.90	2193.0
88.00	2242.0
90.90	198.0
92.00	1401.0
93.00	2178.0
94.00	5720.0
95.00	48360.0
96.00	3335.0
97.10	134.0
103.90	278.0
105.90	257.0
107.90	111.0
111.90	136.0
115.70	212.0
116.10	205.0
117.00	519.0
117.80	194.0
119.00	489.0
122.90	140.0
128.00	229.0
128.70	131.0
129.80	238.0
134.90	124.0
140.90	622.0
142.90	997.0
144.90	653.0
145.80	106.0
147.70	122.0
148.10	116.0
153.10	137.0
154.90	131.0
156.90	131.0
170.90	229.0
172.00	714.0
172.80	504.0
174.00	37552.0
175.00	2788.0
176.00	35856.0
177.00	2430.0

**Instrument :**  
MSVOA\_V  
**ClientSampleId :**  
BFB305