

Data Path : Z:\VOASRV\HPCHEM1\MSVOA V\DATA\VV080620\
 Data File : VV017812.D
 Acq On : 06 Aug 2020 14:27
 Operator : SY/MD
 Sample : L3590-06
 Misc : 5.0mL/MSVOA V/WATER
 ALS Vial : 12 Sample Multiplier: 1

Instrument :
 MSVOA_V
 ClientSampled :
 F2L49

Integration Parameters: LSCINT.P

Integrator: RTE
 Smoothing : OFF
 Sampling : 1
 Start Thrs: 0.2
 Stop Thrs : 0

Filtering: 5
 Min Area: 0 % of largest Peak
 Max Peaks: 100
 Peak Location: TOP

If leading or trailing edge < 100 prefer < Baseline drop else tangent >
 Peak separation: 5

Method : Z:\VOASRV\HPCHEM1\MSVOA_V\METHOD\SOMVLM073020WMA.M
 Title : VOC Analysis

Signal : TIC

| peak # | R.T. min | first scan | max scan | last scan | PK TY | peak height | corr. area | corr. % max. | % of total |
|--------|----------|------------|----------|-----------|-------|-------------|------------|--------------|------------|
| 1 | 1.576 | 145 | 151 | 164 | rVB | 66833 | 75084 | 10.51% | 1.441% |
| 2 | 2.364 | 394 | 396 | 399 | rVB2 | 417 | 165 | 0.02% | 0.003% |
| 3 | 2.392 | 401 | 405 | 407 | rBV | 462 | 349 | 0.05% | 0.007% |
| 4 | 2.444 | 418 | 421 | 423 | rBV2 | 322 | 149 | 0.02% | 0.003% |
| 5 | 2.556 | 453 | 456 | 459 | rBV2 | 477 | 268 | 0.04% | 0.005% |
| 6 | 2.576 | 459 | 462 | 463 | rBV | 299 | 169 | 0.02% | 0.003% |
| 7 | 2.627 | 474 | 478 | 481 | rBV2 | 379 | 319 | 0.04% | 0.006% |
| 8 | 2.682 | 490 | 495 | 496 | rBV | 389 | 242 | 0.03% | 0.005% |
| 9 | 2.691 | 496 | 498 | 499 | rVV | 439 | 139 | 0.02% | 0.003% |
| 10 | 2.714 | 504 | 505 | 510 | rVB | 240 | 188 | 0.03% | 0.004% |
| 11 | 2.733 | 510 | 511 | 513 | rBV | 376 | 120 | 0.02% | 0.002% |
| 12 | 2.833 | 539 | 542 | 544 | rBV | 241 | 173 | 0.02% | 0.003% |
| 13 | 2.917 | 566 | 568 | 573 | rVB | 406 | 313 | 0.04% | 0.006% |
| 14 | 3.000 | 593 | 594 | 598 | rBV | 242 | 152 | 0.02% | 0.003% |
| 15 | 3.023 | 598 | 601 | 603 | rVV | 304 | 157 | 0.02% | 0.003% |
| 16 | 3.055 | 607 | 611 | 612 | rBV | 302 | 159 | 0.02% | 0.003% |
| 17 | 3.116 | 628 | 630 | 632 | rBV | 257 | 140 | 0.02% | 0.003% |
| 18 | 3.154 | 638 | 642 | 645 | rBV2 | 385 | 269 | 0.04% | 0.005% |
| 19 | 3.171 | 645 | 647 | 648 | rBV2 | 253 | 103 | 0.01% | 0.002% |
| 20 | 3.299 | 686 | 687 | 689 | rBV2 | 346 | 112 | 0.02% | 0.002% |
| 21 | 3.357 | 704 | 705 | 710 | rVB | 408 | 213 | 0.03% | 0.004% |
| 22 | 3.383 | 711 | 713 | 715 | rBB | 233 | 89 | 0.01% | 0.002% |
| 23 | 3.392 | 715 | 716 | 718 | rBB | 444 | 125 | 0.02% | 0.002% |
| 24 | 3.453 | 734 | 735 | 738 | rBB | 213 | 88 | 0.01% | 0.002% |
| 25 | 3.479 | 741 | 743 | 745 | rBV2 | 441 | 247 | 0.03% | 0.005% |
| 26 | 3.569 | 768 | 771 | 773 | rBV | 445 | 262 | 0.04% | 0.005% |
| 27 | 3.611 | 782 | 784 | 786 | rBV | 175 | 91 | 0.01% | 0.002% |
| 28 | 3.659 | 797 | 799 | 801 | rBB | 215 | 104 | 0.01% | 0.002% |
| 29 | 3.682 | 804 | 806 | 809 | rBV | 559 | 331 | 0.05% | 0.006% |
| 30 | 3.781 | 834 | 837 | 839 | rBV | 299 | 180 | 0.03% | 0.003% |
| 31 | 3.855 | 857 | 860 | 863 | rBV2 | 315 | 276 | 0.04% | 0.005% |
| 32 | 3.936 | 866 | 885 | 911 | rVV3 | 82061 | 292869 | 40.98% | 5.620% |
| 33 | 4.257 | 983 | 985 | 986 | rBV3 | 203 | 80 | 0.01% | 0.002% |
| 34 | 4.556 | 1077 | 1078 | 1080 | rVB3 | 229 | 81 | 0.01% | 0.002% |

Data Path : Z:\VOASRV\HPCHEM1\MSVOA V\DATA\VV080620\
 Data File : VV017812.D
 Acq On : 06 Aug 2020 14:27
 Operator : SY/MD
 Sample : L3590-06
 Misc : 5.0mL/MSVOA V/WATER
 ALS Vial : 12 Sample Multiplier: 1

Instrument :
 MSVOA_V
 ClientSampleId :
 F2L49

Integration Parameters: LSCINT.P

Integrator: RTE
 Smoothing : OFF
 Sampling : 1
 Start Thrs: 0.2
 Stop Thrs : 0

Filtering: 5
 Min Area: 0 % of largest Peak
 Max Peaks: 100
 Peak Location: TOP

If leading or trailing edge < 100 prefer < Baseline drop else tangent >
 Peak separation: 5

Method : Z:\VOASRV\HPCHEM1\MSVOA_V\METHOD\SOMVLM073020WMA.M
 Title : VOC Analysis

| | | | | | | | | | |
|----|-------|------|------|------|------|--------|--------|---------|---------|
| 35 | 4.598 | 1088 | 1091 | 1092 | rBV3 | 306 | 144 | 0.02% | 0.003% |
| 36 | 4.682 | 1115 | 1117 | 1118 | rBV3 | 229 | 107 | 0.01% | 0.002% |
| 37 | 4.804 | 1152 | 1155 | 1156 | rBV3 | 332 | 160 | 0.02% | 0.003% |
| 38 | 4.849 | 1167 | 1169 | 1173 | rBB2 | 261 | 173 | 0.02% | 0.003% |
| 39 | 4.868 | 1173 | 1175 | 1177 | rBB2 | 240 | 90 | 0.01% | 0.002% |
| 40 | 4.884 | 1177 | 1180 | 1182 | rBV2 | 532 | 269 | 0.04% | 0.005% |
| 41 | 4.897 | 1182 | 1184 | 1189 | rVB2 | 541 | 391 | 0.05% | 0.008% |
| 42 | 4.926 | 1190 | 1193 | 1194 | rBV | 164 | 111 | 0.02% | 0.002% |
| 43 | 4.955 | 1198 | 1202 | 1204 | rBV2 | 271 | 261 | 0.04% | 0.005% |
| 44 | 4.990 | 1212 | 1213 | 1217 | rVB | 521 | 277 | 0.04% | 0.005% |
| 45 | 5.071 | 1218 | 1238 | 1259 | rBV3 | 276942 | 714630 | 100.00% | 13.714% |
| 46 | 5.299 | 1307 | 1309 | 1312 | rBV | 392 | 235 | 0.03% | 0.005% |
| 47 | 5.315 | 1312 | 1314 | 1315 | rBV | 277 | 141 | 0.02% | 0.003% |
| 48 | 5.428 | 1345 | 1349 | 1352 | rBV | 390 | 314 | 0.04% | 0.006% |
| 49 | 5.476 | 1361 | 1364 | 1365 | rBV | 377 | 245 | 0.03% | 0.005% |
| 50 | 5.495 | 1368 | 1370 | 1372 | rBV | 496 | 212 | 0.03% | 0.004% |
| 51 | 5.547 | 1384 | 1386 | 1387 | rBV | 233 | 90 | 0.01% | 0.002% |
| 52 | 5.572 | 1393 | 1394 | 1396 | rVB | 262 | 78 | 0.01% | 0.001% |
| 53 | 5.640 | 1403 | 1415 | 1439 | rBV | 253613 | 515478 | 72.13% | 9.892% |
| 54 | 6.447 | 1662 | 1666 | 1667 | rBV | 581 | 337 | 0.05% | 0.006% |
| 55 | 6.479 | 1673 | 1676 | 1680 | rBV3 | 420 | 363 | 0.05% | 0.007% |
| 56 | 6.707 | 1745 | 1747 | 1748 | rBV | 256 | 96 | 0.01% | 0.002% |
| 57 | 6.865 | 1794 | 1796 | 1800 | rBB2 | 530 | 332 | 0.05% | 0.006% |
| 58 | 6.884 | 1800 | 1802 | 1803 | rBV | 342 | 176 | 0.02% | 0.003% |
| 59 | 7.010 | 1830 | 1841 | 1857 | rBV | 99700 | 178566 | 24.99% | 3.427% |
| 60 | 7.264 | 1917 | 1920 | 1925 | rBV3 | 538 | 526 | 0.07% | 0.010% |
| 61 | 7.338 | 1930 | 1943 | 1962 | rBV | 346620 | 594953 | 83.25% | 11.417% |
| 62 | 7.550 | 2007 | 2009 | 2011 | rBV | 331 | 184 | 0.03% | 0.004% |
| 63 | 7.604 | 2020 | 2026 | 2028 | rBV3 | 557 | 449 | 0.06% | 0.009% |
| 64 | 7.643 | 2028 | 2038 | 2057 | rBV2 | 77182 | 130440 | 18.25% | 2.503% |
| 65 | 7.923 | 2124 | 2125 | 2128 | rBV2 | 440 | 230 | 0.03% | 0.004% |
| 66 | 7.997 | 2143 | 2148 | 2150 | rBV3 | 792 | 635 | 0.09% | 0.012% |
| 67 | 8.042 | 2159 | 2162 | 2164 | rBV2 | 388 | 283 | 0.04% | 0.005% |
| 68 | 8.109 | 2173 | 2183 | 2205 | rBV | 182249 | 319082 | 44.65% | 6.123% |
| 69 | 8.392 | 2269 | 2271 | 2275 | rBV | 558 | 413 | 0.06% | 0.008% |
| 70 | 8.457 | 2289 | 2291 | 2294 | rBV | 396 | 196 | 0.03% | 0.004% |
| 71 | 8.502 | 2301 | 2305 | 2308 | rVB2 | 709 | 550 | 0.08% | 0.011% |

Data Path : Z:\VOASRV\HPCHEM1\MSVOA V\DATA\VV080620\
 Data File : VV017812.D
 Acq On : 06 Aug 2020 14:27
 Operator : SY/MD
 Sample : L3590-06
 Misc : 5.0mL/MSVOA V/WATER
 ALS Vial : 12 Sample Multiplier: 1

Instrument :
 MSVOA_V
 ClientSampleId :
 F2L49

Integration Parameters: LSCINT.P

Integrator: RTE
 Smoothing : OFF Filtering: 5
 Sampling : 1 Min Area: 0 % of largest Peak
 Start Thrs: 0.2 Max Peaks: 100
 Stop Thrs : 0 Peak Location: TOP

If leading or trailing edge < 100 prefer < Baseline drop else tangent >
 Peak separation: 5

Method : Z:\VOASRV\HPCHEM1\MSVOA_V\METHOD\SOMVLM073020WMA.M
 Title : VOC Analysis

| | | | | | | | | | |
|-----|--------|------|------|------|------|--------|--------|--------|---------|
| 72 | 8.611 | 2336 | 2339 | 2341 | rBV2 | 442 | 335 | 0.05% | 0.006% |
| 73 | 8.656 | 2351 | 2353 | 2357 | rBV2 | 334 | 307 | 0.04% | 0.006% |
| 74 | 8.775 | 2389 | 2390 | 2393 | rBV | 362 | 136 | 0.02% | 0.003% |
| 75 | 8.874 | 2410 | 2421 | 2445 | rBV | 390562 | 630706 | 88.26% | 12.103% |
| 76 | 9.071 | 2480 | 2482 | 2484 | rBV | 514 | 246 | 0.03% | 0.005% |
| 77 | 9.260 | 2538 | 2541 | 2542 | rBV | 456 | 215 | 0.03% | 0.004% |
| 78 | 9.321 | 2555 | 2560 | 2562 | rBV | 383 | 320 | 0.04% | 0.006% |
| 79 | 9.373 | 2574 | 2576 | 2579 | rBV | 559 | 331 | 0.05% | 0.006% |
| 80 | 9.546 | 2625 | 2630 | 2632 | rBV | 626 | 467 | 0.07% | 0.009% |
| 81 | 9.585 | 2637 | 2642 | 2645 | rBV | 451 | 482 | 0.07% | 0.009% |
| 82 | 9.672 | 2666 | 2669 | 2670 | rBV | 239 | 148 | 0.02% | 0.003% |
| 83 | 9.794 | 2706 | 2707 | 2711 | rVB | 278 | 119 | 0.02% | 0.002% |
| 84 | 9.881 | 2731 | 2734 | 2741 | rVB2 | 421 | 371 | 0.05% | 0.007% |
| 85 | 9.990 | 2767 | 2768 | 2774 | rVB | 231 | 94 | 0.01% | 0.002% |
| 86 | 10.190 | 2827 | 2830 | 2832 | rBV2 | 364 | 196 | 0.03% | 0.004% |
| 87 | 10.238 | 2834 | 2845 | 2863 | rVV2 | 237550 | 374390 | 52.39% | 7.185% |
| 88 | 10.315 | 2867 | 2869 | 2870 | rBV2 | 436 | 159 | 0.02% | 0.003% |
| 89 | 10.765 | 3006 | 3009 | 3012 | rBV | 235 | 226 | 0.03% | 0.004% |
| 90 | 10.961 | 3067 | 3070 | 3072 | rBV | 346 | 260 | 0.04% | 0.005% |
| 91 | 11.193 | 3140 | 3142 | 3144 | rBV | 417 | 227 | 0.03% | 0.004% |
| 92 | 11.270 | 3155 | 3166 | 3185 | rBV | 442370 | 679278 | 95.05% | 13.035% |
| 93 | 11.534 | 3246 | 3248 | 3251 | rBV | 357 | 187 | 0.03% | 0.004% |
| 94 | 11.646 | 3271 | 3283 | 3301 | rBV | 435648 | 684753 | 95.82% | 13.140% |
| 95 | 11.900 | 3354 | 3362 | 3365 | rBV | 442 | 613 | 0.09% | 0.012% |
| 96 | 11.974 | 3381 | 3385 | 3387 | rBV2 | 480 | 370 | 0.05% | 0.007% |
| 97 | 12.270 | 3475 | 3477 | 3482 | rVB | 365 | 240 | 0.03% | 0.005% |
| 98 | 12.334 | 3496 | 3497 | 3499 | rBV | 345 | 146 | 0.02% | 0.003% |
| 99 | 12.447 | 3531 | 3532 | 3534 | rBV | 379 | 151 | 0.02% | 0.003% |
| 100 | 14.537 | 4178 | 4182 | 4184 | rBV2 | 836 | 573 | 0.08% | 0.011% |

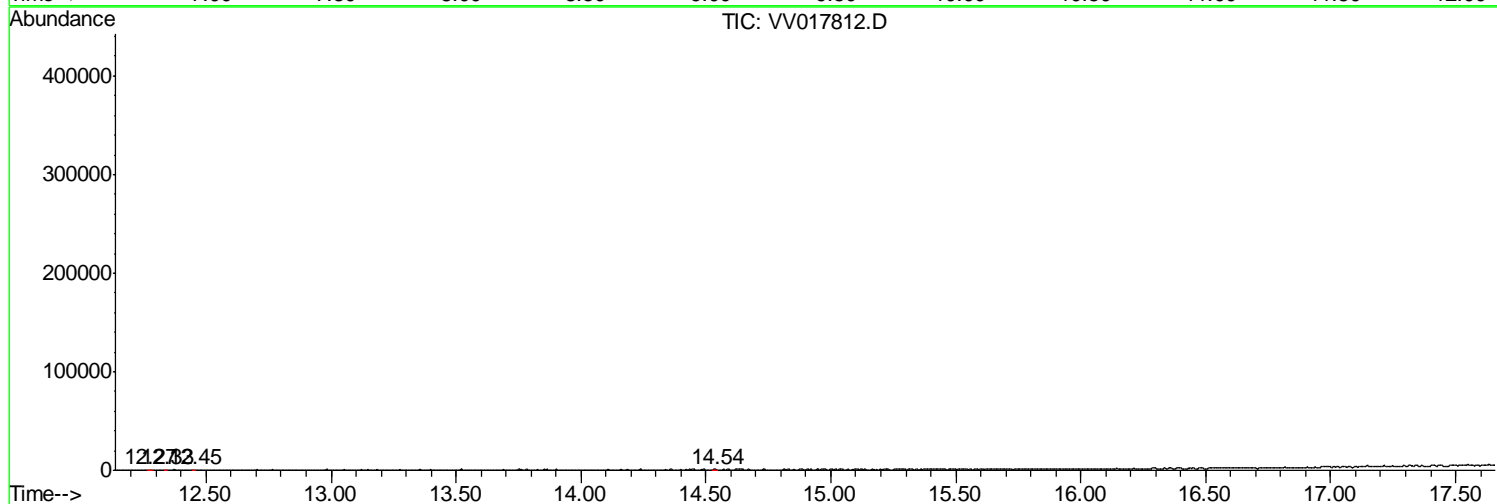
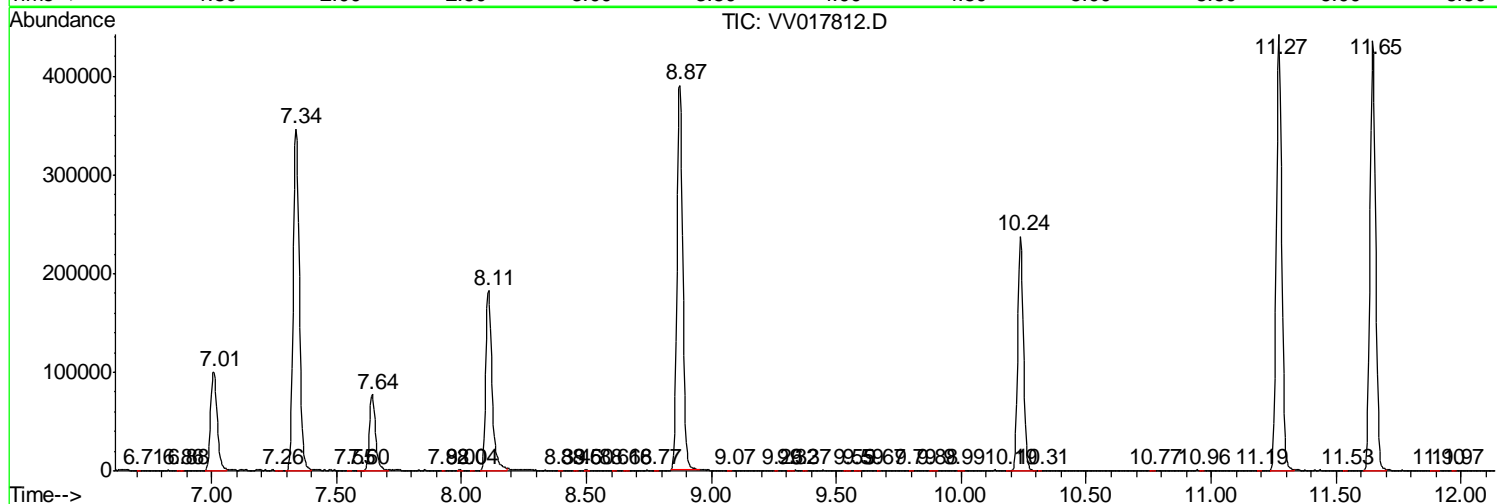
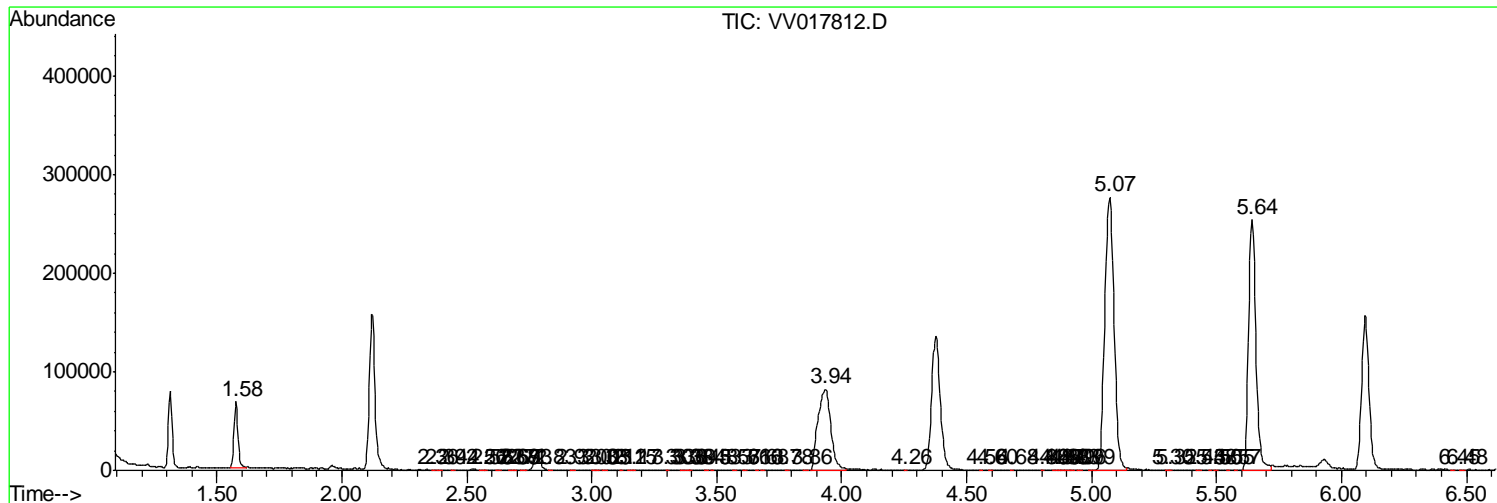
Sum of corrected areas: 5211069

Data Path : Z:\VOASRV\HPCHEM1\MSVOA V\DATA\VV080620\
 Data File : VV017812.D
 Acq On : 06 Aug 2020 14:27
 Operator : SY/MD
 Sample : L3590-06
 Misc : 5.0mL/MSVOA V/WATER
 ALS Vial : 12 Sample Multiplier: 1

Instrument :
 MSVOA_V
 ClientSampled :
 F2L49

Quant Method : Z:\VOASRV\HPCHEM1\MSVOA_V\METHOD\SOMVLM073020WMA.M
 Quant Title : VOC Analysis

TIC Library : C:\DATABASE\NIST11.L
 TIC Integration Parameters: LSCINT.P



Data Path : Z:\VOASRV\HPCHEM1\MSVOA_V\DATA\VV080620\
Data File : VV017812.D
Acq On : 06 Aug 2020 14:27
Operator : SY/MD
Sample : L3590-06
Misc : 5.0mL/MSVOA_V/WATER
ALS Vial : 12 Sample Multiplier: 1

Instrument :
MSVOA_V
ClientSampleId :
F2L49

Quant Method : Z:\VOASRV\HPCHEM1\MSVOA_V\METHOD\SOMVLM073020WMA.M
Quant Title : VOC Analysis

TIC Library : C:\DATABASE\NIST11.L
TIC Integration Parameters: LSCINT.P

No Library Search Compounds Detected

Data Path : Z:\VOASRV\HPCHEM1\MSVOA_V\DATA\VV080620\
Data File : VV017812.D
Acq On : 06 Aug 2020 14:27
Operator : SY/MD
Sample : L3590-06
Misc : 5.0mL/MSVOA_V/WATER
ALS Vial : 12 Sample Multiplier: 1

Instrument :
MSVOA_V
ClientSampleId :
F2L49

Quant Method : Z:\VOASRV\HPCHEM1\MSVOA_V\METHOD\SOMVLM073020WMA.M
Quant Title : VOC Analysis

TIC Library : C:\DATABASE\NIST11.L
TIC Integration Parameters: LSCINT.P

| TIC Top Hit name | RT | EstConc | Units | Response | --Internal Standard-- | | | |
|------------------|----|---------|-------|----------|-----------------------|----|------|------|
| | | | | | # | RT | Resp | Conc |
