

Data Path : Z:\VOASRV\HPCHEM1\MSVOA V\DATA\VV081018\  
 Data File : VV006980.D  
 Acq On : 10 Aug 2018 13:21  
 Operator : SY/MD  
 Sample : J4357-22DL 100X  
 Misc : 25 mL/MSVOA V/WATER  
 ALS Vial : 9 Sample Multiplier: 1

Instrument :  
 MSVOA\_V  
 ClientSampleId :  
 ESWW2DL

Quant Time: Aug 10 23:15:16 2018  
 Quant Method : Z:\VOASRV\HPCHEM1\MSVOA\_V\METHOD\SOMVTR080918WMA.M  
 Quant Title : TRACE VOA SOM01.0  
 QLast Update : Fri Aug 10 23:13:31 2018  
 Response via : Initial Calibration

Internal Standards	R.T.	QIon	Response	Conc	Units	Dev(Min)
1) 1,4-Difluorobenzene	5.67	114	251244	5.00	ug/L	0.00
28) Chlorobenzene-d5	8.90	117	238877	5.00	ug/L	0.00
60) 1,4-Dichlorobenzene-d4	11.30	152	96401	5.00	ug/L	0.00

System Monitoring Compounds

4) Vinyl Chloride-d3	1.32	65	72799	4.49	ug/L	0.00
Spiked Amount	5.000	Range	40 - 130	Recovery	=	89.80%
7) Chloroethane-d5	1.58	69	64206	4.67	ug/L	0.00
Spiked Amount	5.000	Range	65 - 130	Recovery	=	93.40%
11) 1,1-Dichloroethene-d2	2.13	63	97415	3.20	ug/L	0.00
Spiked Amount	5.000	Range	60 - 125	Recovery	=	64.00%
20) 2-Butanone-d5	3.98	46	203603	43.65	ug/L	0.00
Spiked Amount	50.000	Range	40 - 130	Recovery	=	87.30%
24) Chloroform-d	4.41	84	159875	4.86	ug/L	0.00
Spiked Amount	5.000	Range	70 - 125	Recovery	=	97.20%
26) 1,2-Dichloroethane-d4	5.09	65	84023	5.06	ug/L	0.00
Spiked Amount	5.000	Range	70 - 130	Recovery	=	101.20%
32) Benzene-d6	5.10	84	299871	4.89	ug/L	0.00
Spiked Amount	5.000	Range	70 - 125	Recovery	=	97.80%
36) 1,2-Dichloropropane-d6	6.12	67	105407	5.03	ug/L	0.00
Spiked Amount	5.000	Range	60 - 140	Recovery	=	100.60%
41) Toluene-d8	7.36	98	221328	4.24	ug/L	0.00
Spiked Amount	5.000	Range	70 - 130	Recovery	=	84.80%
43) trans-1,3-Dichloropropene-	7.67	79	31604	4.33	ug/L	0.00
Spiked Amount	5.000	Range	55 - 130	Recovery	=	86.60%
46) 2-Hexanone-d5	8.15	63	122427	41.02	ug/L	0.00
Spiked Amount	50.000	Range	45 - 130	Recovery	=	82.04%
57) 1,1,2,2-Tetrachloroethane-	10.27	84	77982	4.77	ug/L	0.00
Spiked Amount	5.000	Range	65 - 120	Recovery	=	95.40%
64) 1,2-Dichlorobenzene-d4	11.68	152	84024	5.01	ug/L	0.00
Spiked Amount	5.000	Range	80 - 120	Recovery	=	100.20%

Target Compounds

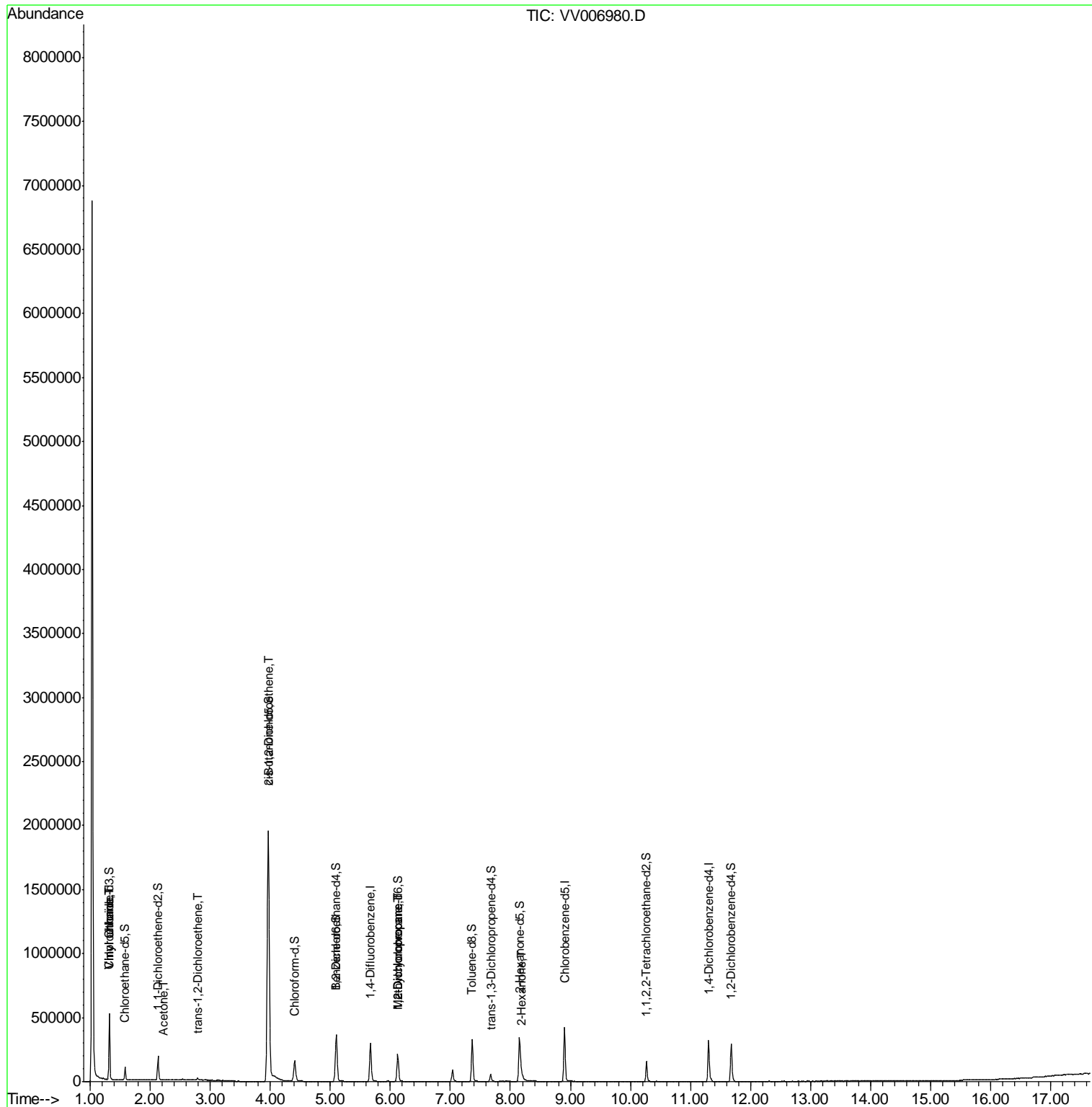
Target Compounds	R.T.	QIon	Response	Conc	Units	Ovalue
5) Vinyl chloride	1.32	62	256024	10.521	ug/L	99
8) Chloroethane	1.32	64	82038	5.556	ug/L #	46
13) Acetone	2.23	43	620	0.258	ug/L	90
18) trans-1,2-Dichloroethene	2.79	96	6332	0.328	ug/L	92
22) cis-1,2-Dichloroethene	3.97	96	1030061	46.987	ug/L	99
35) Methylcyclohexane	6.12	83	23646	0.742	ug/L #	16
37) 1,2-Dichloropropane	6.12	63	11365	0.502	ug/L #	87
48) 2-Hexanone	8.20	43	13356	1.548	ug/L #	79

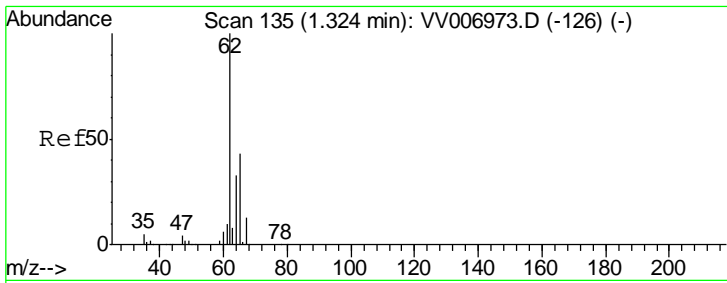
(#) = qualifier out of range (m) = manual integration (+) = signals summed

Data Path : Z:\VOASRV\HPCHEM1\MSVOA V\DATA\VV081018\  
 Data File : VV006980.D  
 Acq On : 10 Aug 2018 13:21  
 Operator : SY/MD  
 Sample : J4357-22DL 100X  
 Misc : 25 mL/MSVOA V/WATER  
 ALS Vial : 9 Sample Multiplier: 1

Instrument :  
 MSVOA\_V  
 ClientSampleId :  
 ESWW2DL

Quant Time: Aug 10 23:15:16 2018  
 Quant Method : Z:\VOASRV\HPCHEM1\MSVOA\_V\METHOD\SOMVTR080918WMA.M  
 Quant Title : TRACE VOA SOM01.0  
 QLast Update : Fri Aug 10 23:13:31 2018  
 Response via : Initial Calibration

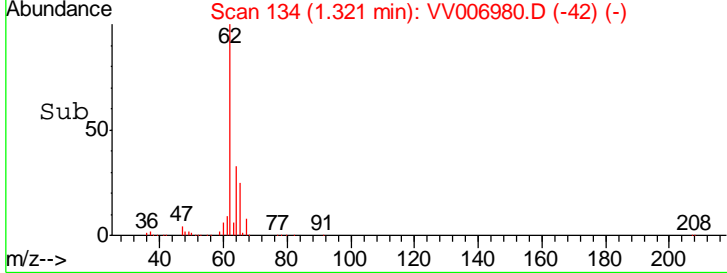
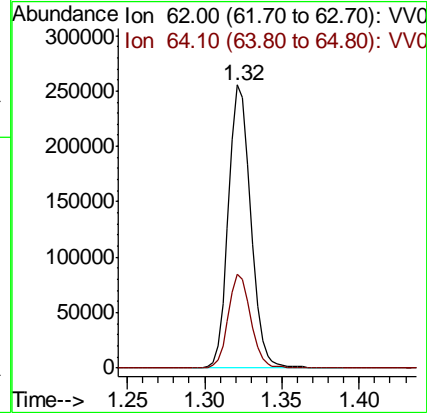
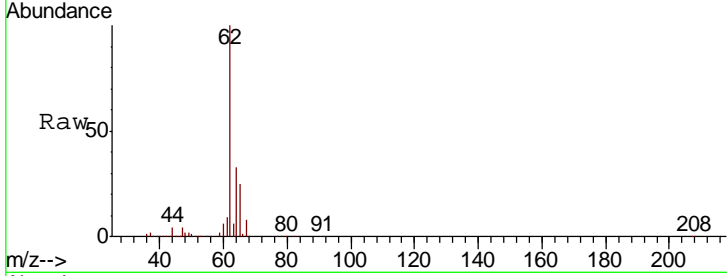




#5  
 Vinyl chloride  
 Concen: 10.521 ug/L  
 RT: 1.32 min Scan# 134  
 Delta R.T. -0.00 min  
 Lab File: VV006980.D  
 Acq: 10 Aug 2018 13:21

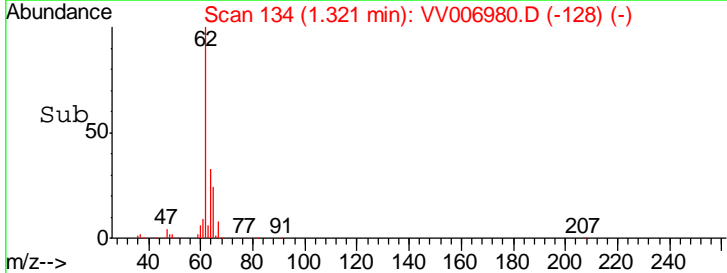
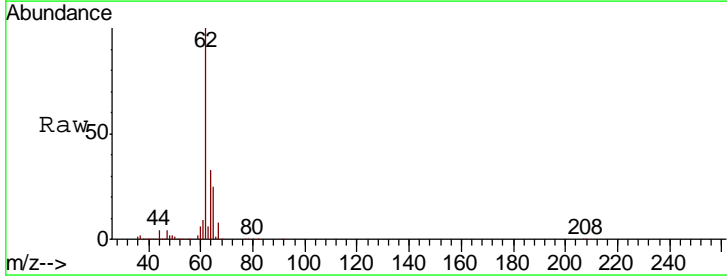
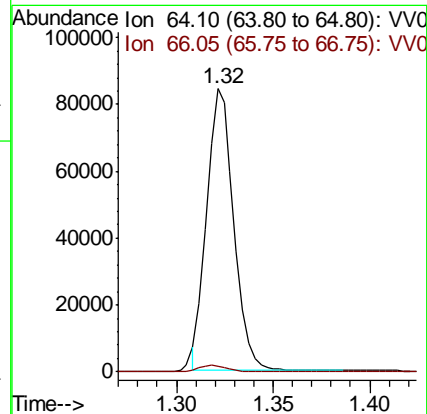
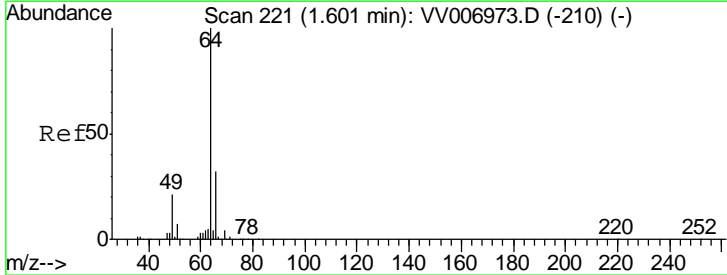
**Instrument :**  
 MSVOA\_V  
**ClientSampled :**  
 ESWW2DL

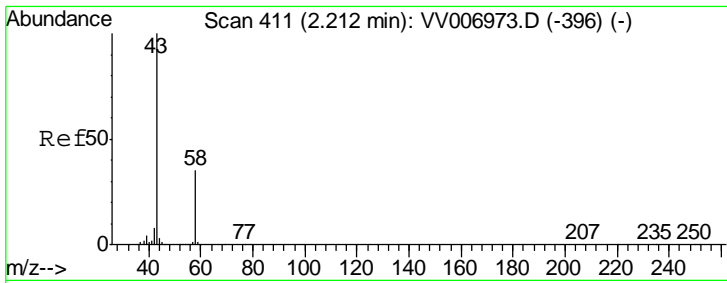
Tgt Ion	Resp	Lower	Upper
62	100		
64	33.2	23.5	43.7



#8  
 Chloroethane  
 Concen: 5.556 ug/L  
 RT: 1.32 min Scan# 134  
 Delta R.T. -0.28 min  
 Lab File: VV006980.D  
 Acq: 10 Aug 2018 13:21

Tgt Ion	Resp	Lower	Upper
64	100		
66	2.2	22.6	42.0#

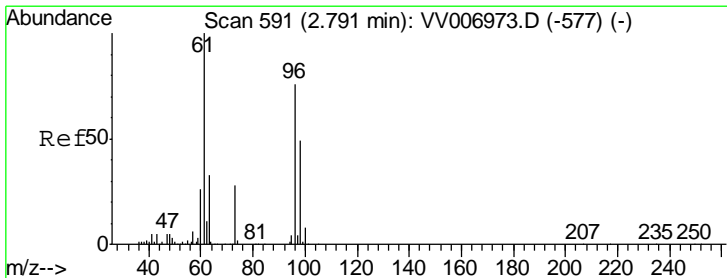
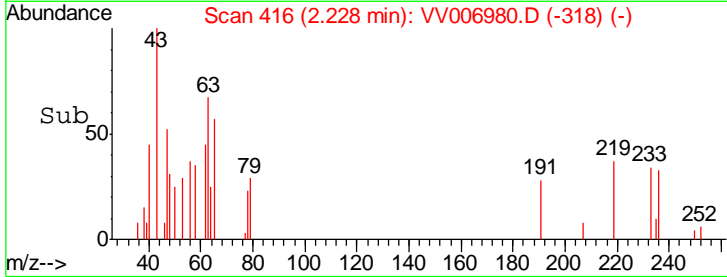
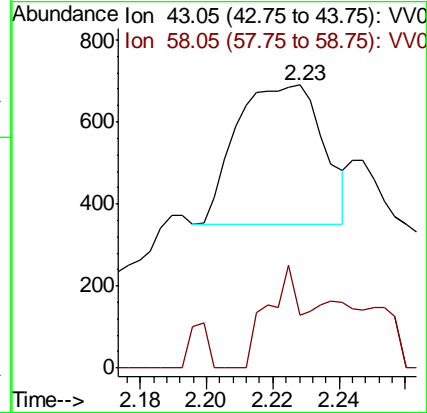
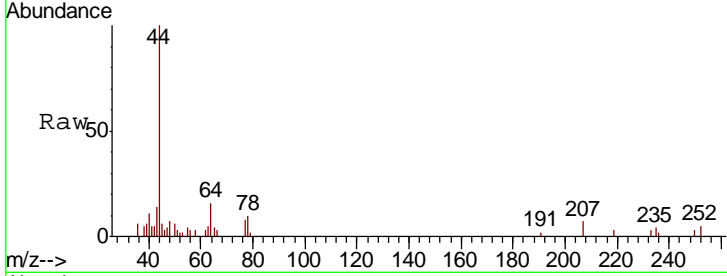




#13  
 Acetone  
 Concen: 0.258 ug/L  
 RT: 2.23 min Scan# 416  
 Delta R.T. 0.02 min  
 Lab File: VV006980.D  
 Acq: 10 Aug 2018 13:21

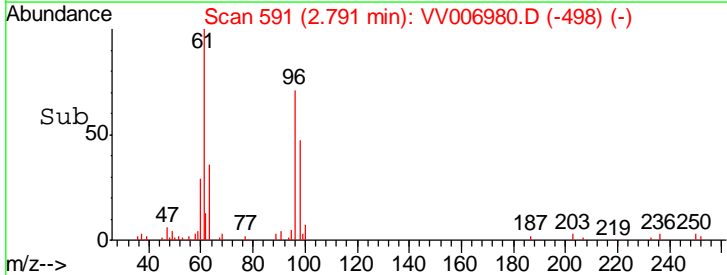
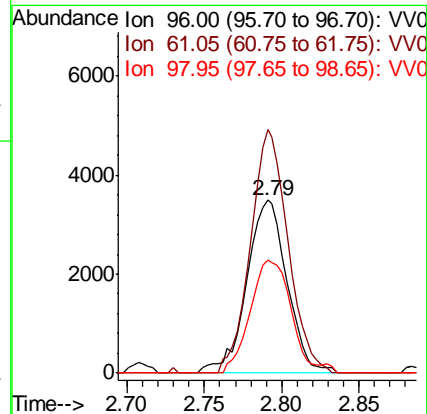
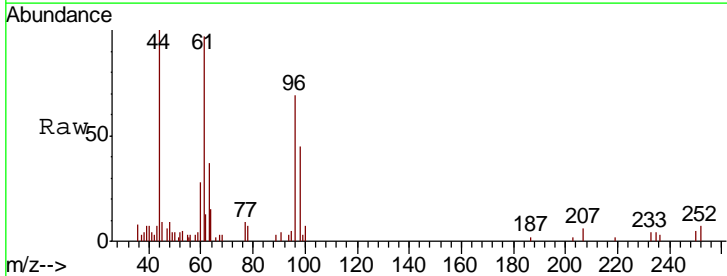
Instrument :  
 MSVOA\_V  
 ClientSampled :  
 ESWW2DL

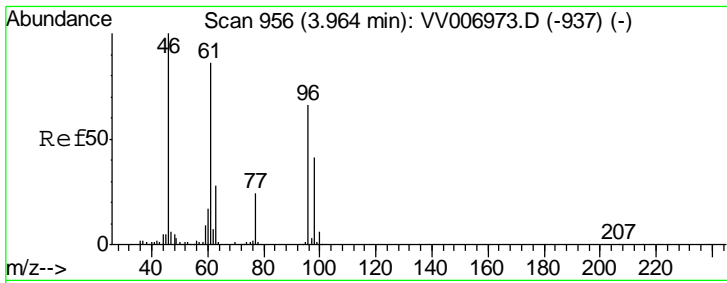
Tgt Ion	Resp	Lower	Upper
43	100		
58	29.7	0.0	71.4



#18  
 trans-1,2-Dichloroethene  
 Concen: 0.328 ug/L  
 RT: 2.79 min Scan# 591  
 Delta R.T. 0.00 min  
 Lab File: VV006980.D  
 Acq: 10 Aug 2018 13:21

Tgt Ion	Resp	Lower	Upper
96	100		
61	140.8	91.1	169.3
98	65.6	43.5	80.9

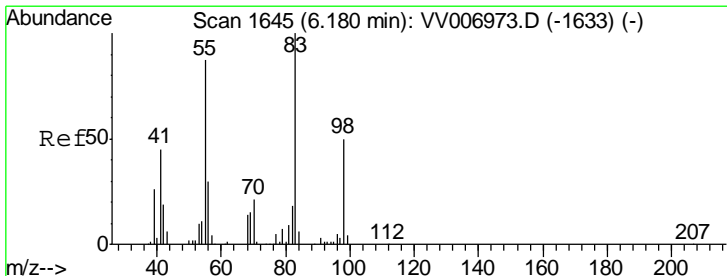
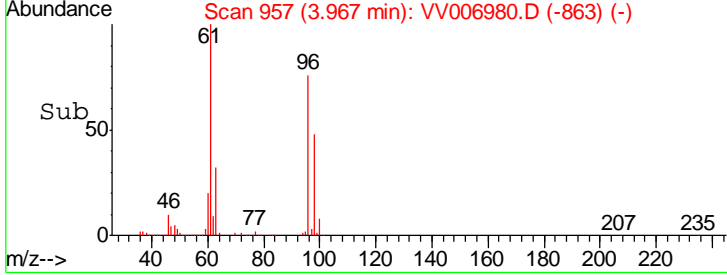
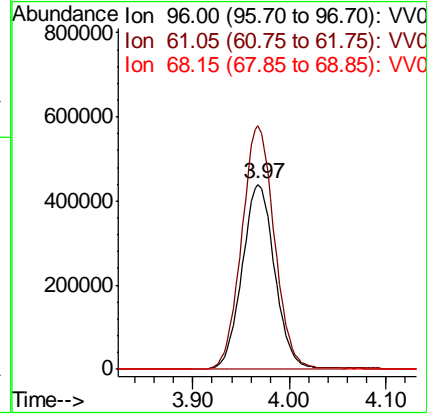
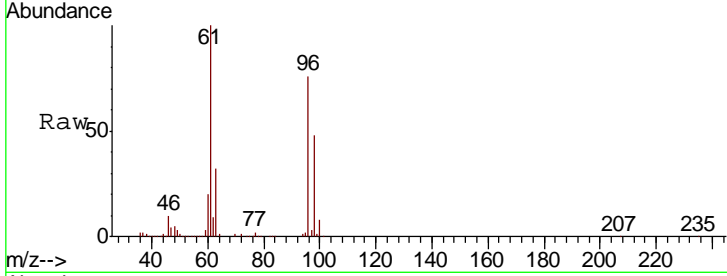




#22  
 cis-1,2-Dichloroethene  
 Concen: 46.987 ug/L  
 RT: 3.97 min Scan# 957  
 Delta R.T. 0.00 min  
 Lab File: VV006980.D  
 Acq: 10 Aug 2018 13:21

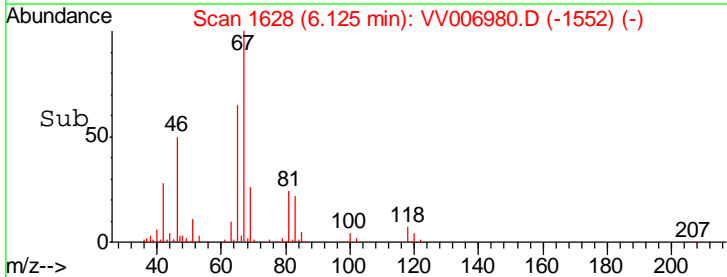
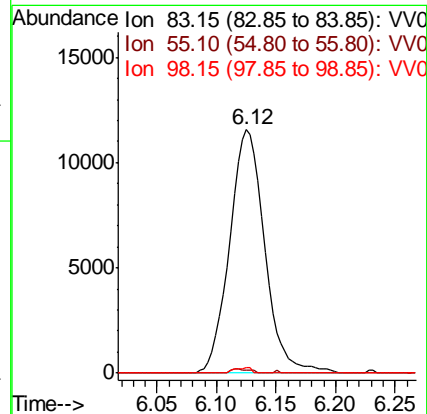
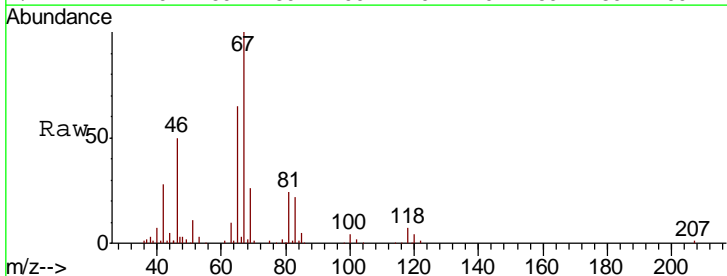
Instrument :  
 MSVOA\_V  
 ClientSampled :  
 ESWW2DL

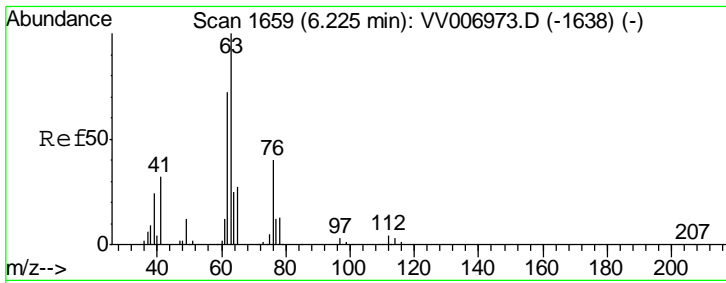
Tgt Ion	Resp	Lower	Upper
96	1030061		
61	131.7	91.1	169.1
68	0.0	0.0	0.0



#35  
 Methylcyclohexane  
 Concen: 0.742 ug/L  
 RT: 6.12 min Scan# 1628  
 Delta R.T. -0.05 min  
 Lab File: VV006980.D  
 Acq: 10 Aug 2018 13:21

Tgt Ion	Resp	Lower	Upper
83	23646		
55	0.9	68.1	102.1#
98	1.0	37.9	56.9#

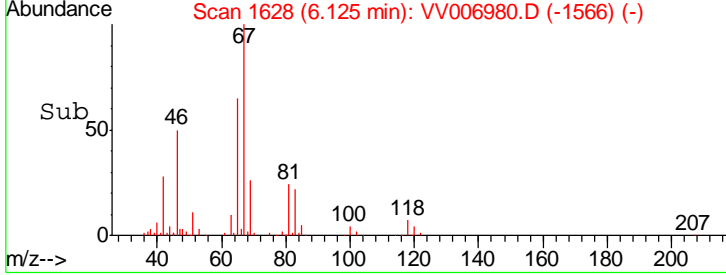
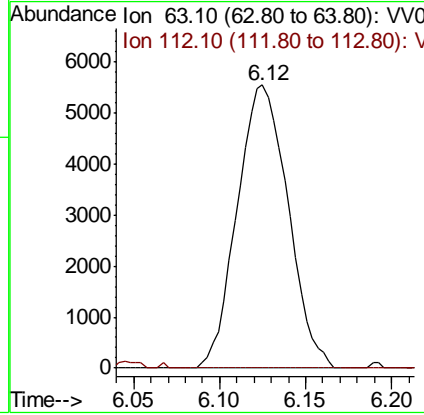
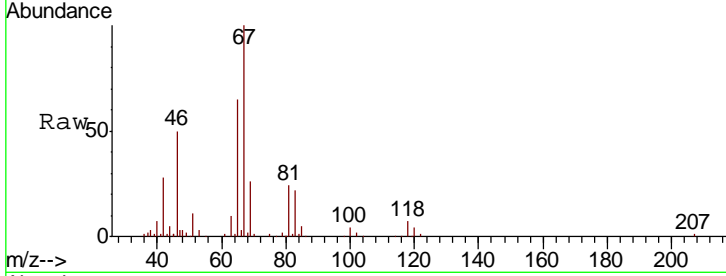




#37  
 1,2-Dichloropropane  
 Concen: 0.502 ug/L  
 RT: 6.12 min Scan# 1628  
 Delta R.T. -0.10 min  
 Lab File: VV006980.D  
 Acq: 10 Aug 2018 13:21

Instrument : MSVOA\_V  
 ClientSampled : ESWW2DL

Tgt Ion	Resp	Lower	Upper
63	11365		
112	0.2	3.5	5.3#



#48  
 2-Hexanone  
 Concen: 1.548 ug/L  
 RT: 8.20 min Scan# 2272  
 Delta R.T. 0.00 min  
 Lab File: VV006980.D  
 Acq: 10 Aug 2018 13:21

Tgt Ion	Resp	Lower	Upper
43	13356		
58	42.9	44.2	66.2#
57	0.0	14.8	22.2#
100	7.8	8.8	13.2#

