

Data Path : Z:\VOASRV\HPCHEM1\MSVOA V\DATA\VV081019\
 Data File : VV012170.D
 Acq On : 10 Aug 2019 00:03
 Operator : SY/MD
 Sample : K4248-07
 Misc : 5mL/MSVOA V/WATER
 ALS Vial : 19 Sample Multiplier: 1

Instrument :
 MSVOA_V
 ClientSampleId :
 F2B14

Integration Parameters: LSCINT.P

Integrator: RTE
 Smoothing : OFF
 Sampling : 1
 Start Thrs: 0.2
 Stop Thrs : 0

Filtering: 5
 Min Area: 0 % of largest Peak
 Max Peaks: 100
 Peak Location: TOP

If leading or trailing edge < 100 prefer < Baseline drop else tangent >
 Peak separation: 5

Method : Z:\VOASRV\HPCHEM1\MSVOA_V\METHOD\SOMVLM081019WMA.M
 Title : VOC Analysis

Signal : TIC

peak #	R.T. min	first scan	max scan	last scan	PK TY	peak height	corr. area	corr. % max.	% of total
1	1.322	64	72	92	rVB	914105	946038	5.05%	2.775%
2	1.576	144	151	163	rVB	45731	55921	0.30%	0.164%
3	1.772	205	212	217	rVB6	1913	2550	0.01%	0.007%
4	1.859	236	239	242	rBV3	571	476	0.00%	0.001%
5	2.049	292	298	306	rVB4	1517	2188	0.01%	0.006%
6	2.084	306	309	312	rBV3	690	390	0.00%	0.001%
7	2.129	312	323	334	rVV	132016	189468	1.01%	0.556%
8	2.180	334	339	349	rVV5	2333	3572	0.02%	0.010%
9	2.225	350	353	356	rVB2	479	309	0.00%	0.001%
10	2.245	356	359	363	rBV	499	381	0.00%	0.001%
11	2.315	377	381	386	rVB	415	469	0.00%	0.001%
12	2.457	421	425	430	rBV3	322	206	0.00%	0.001%
13	2.534	445	449	451	rBV	327	258	0.00%	0.001%
14	2.791	518	529	549	rBV2	61521	106043	0.57%	0.311%
15	3.013	594	598	602	rBV2	245	241	0.00%	0.001%
16	3.216	654	661	666	rBV3	543	610	0.00%	0.002%
17	3.531	754	759	761	rBV2	274	190	0.00%	0.001%
18	3.553	761	766	769	rVB2	167	165	0.00%	0.000%
19	3.659	796	799	804	rVB2	197	173	0.00%	0.001%
20	3.817	843	848	851	rBV2	245	254	0.00%	0.001%
21	3.958	871	892	937	rBV	1836119	4456766	23.80%	13.074%
22	4.325	1002	1006	1007	rBV2	373	267	0.00%	0.001%
23	4.399	1012	1029	1057	rBV	95441	237558	1.27%	0.697%
24	4.492	1057	1058	1066	rVB2	491	385	0.00%	0.001%
25	4.544	1072	1074	1077	rVB	286	162	0.00%	0.000%
26	4.576	1081	1084	1086	rVB	340	193	0.00%	0.001%
27	4.717	1124	1128	1131	rVB	306	182	0.00%	0.001%
28	5.093	1228	1245	1274	rVV2	227093	559145	2.99%	1.640%
29	5.261	1293	1297	1300	rVB3	304	212	0.00%	0.001%
30	5.283	1300	1304	1306	rBV2	454	359	0.00%	0.001%
31	5.344	1319	1323	1326	rBV	248	203	0.00%	0.001%
32	5.566	1388	1392	1396	rVB2	294	325	0.00%	0.001%
33	5.605	1396	1404	1408	rBV2	377	558	0.00%	0.002%
34	5.663	1408	1422	1446	rBV	312673	611896	3.27%	1.795%

Data Path : Z:\VOASRV\HPCHEM1\MSVOA V\DATA\VV081019\
 Data File : VV012170.D
 Acq On : 10 Aug 2019 00:03
 Operator : SY/MD
 Sample : K4248-07
 Misc : 5mL/MSVOA V/WATER
 ALS Vial : 19 Sample Multiplier: 1

Instrument :
 MSVOA_V
 ClientSampleId :
 F2B14

Integration Parameters: LSCINT.P

Integrator: RTE
 Smoothing : OFF
 Sampling : 1
 Start Thrs: 0.2
 Stop Thrs : 0

Filtering: 5
 Min Area: 0 % of largest Peak
 Max Peaks: 100
 Peak Location: TOP

If leading or trailing edge < 100 prefer < Baseline drop else tangent >
 Peak separation: 5

Method : Z:\VOASRV\HPCHEM1\MSVOA_V\METHOD\SOMVLM081019WMA.M
 Title : VOC Analysis

35	5.814	1466	1469	1473	rVB	557	359	0.00%	0.001%
36	5.962	1496	1515	1550	rBV	9778126	18725405	100.00%	54.931%
37	6.116	1553	1563	1584	rVB	124258	248285	1.33%	0.728%
38	6.466	1668	1672	1676	rVB2	318	283	0.00%	0.001%
39	6.527	1690	1691	1698	rVB	203	180	0.00%	0.001%
40	6.672	1732	1736	1739	rVV2	416	256	0.00%	0.001%
41	6.711	1742	1748	1750	rVV2	256	276	0.00%	0.001%
42	6.762	1761	1764	1768	rVV2	196	170	0.00%	0.000%
43	6.939	1816	1819	1824	rBV	232	211	0.00%	0.001%
44	7.029	1835	1847	1862	rBV	67243	117335	0.63%	0.344%
45	7.109	1867	1872	1877	rBV	545	464	0.00%	0.001%
46	7.244	1910	1914	1916	rBV2	335	329	0.00%	0.001%
47	7.283	1923	1926	1930	rVB	332	271	0.00%	0.001%
48	7.357	1936	1949	1967	rBV	268553	459333	2.45%	1.347%
49	7.544	2006	2007	2013	rVB2	303	206	0.00%	0.001%
50	7.662	2033	2044	2066	rBV2	46826	78582	0.42%	0.231%
51	7.765	2073	2076	2079	rBV2	344	264	0.00%	0.001%
52	7.884	2110	2113	2115	rBV	382	252	0.00%	0.001%
53	8.019	2140	2155	2179	rVV	2977225	5016499	26.79%	14.716%
54	8.129	2180	2189	2220	rVV	119905	217472	1.16%	0.638%
55	8.235	2220	2222	2225	rVB3	622	345	0.00%	0.001%
56	8.306	2241	2244	2249	rVB3	437	384	0.00%	0.001%
57	8.338	2249	2254	2257	rVB2	311	290	0.00%	0.001%
58	8.354	2257	2259	2264	rBV2	205	163	0.00%	0.000%
59	8.444	2282	2287	2291	rBV2	254	203	0.00%	0.001%
60	8.498	2301	2304	2308	rBV2	323	279	0.00%	0.001%
61	8.894	2414	2427	2454	rBV	452921	728798	3.89%	2.138%
62	9.048	2473	2475	2477	rBV2	334	190	0.00%	0.001%
63	9.151	2504	2507	2510	rBV	394	254	0.00%	0.001%
64	9.187	2513	2518	2525	rVB3	651	683	0.00%	0.002%
65	9.232	2526	2532	2540	rVB2	376	648	0.00%	0.002%
66	9.273	2540	2545	2547	rBV	280	270	0.00%	0.001%
67	9.640	2655	2659	2662	rBV	386	179	0.00%	0.001%
68	10.132	2809	2812	2815	rBV	250	198	0.00%	0.001%
69	10.260	2837	2852	2872	rBV	154575	246373	1.32%	0.723%
70	10.421	2898	2902	2908	rVB	423	452	0.00%	0.001%
71	10.833	3024	3030	3034	rBV2	188	242	0.00%	0.001%

Data Path : Z:\VOASRV\HPCHEM1\MSVOA V\DATA\VV081019\
 Data File : VV012170.D
 Acq On : 10 Aug 2019 00:03
 Operator : SY/MD
 Sample : K4248-07
 Misc : 5mL/MSVOA V/WATER
 ALS Vial : 19 Sample Multiplier: 1

Instrument :
 MSVOA_V
 ClientSampleId :
 F2B14

Integration Parameters: LSCINT.P

Integrator: RTE
 Smoothing : OFF Filtering: 5
 Sampling : 1 Min Area: 0 % of largest Peak
 Start Thrs: 0.2 Max Peaks: 100
 Stop Thrs : 0 Peak Location: TOP

If leading or trailing edge < 100 prefer < Baseline drop else tangent >
 Peak separation: 5

Method : Z:\VOASRV\HPCHEM1\MSVOA_V\METHOD\SOMVLM081019WMA.M
 Title : VOC Analysis

72	11.228	3150	3153	3157	rBV	368	305	0.00%	0.001%
73	11.293	3161	3173	3193	rBV	422583	661205	3.53%	1.940%
74	11.434	3215	3217	3220	rVB3	383	163	0.00%	0.000%
75	11.485	3228	3233	3234	rBV2	314	188	0.00%	0.001%
76	11.669	3279	3290	3311	rBV	249283	396012	2.11%	1.162%
77	11.813	3332	3335	3337	rBV	337	165	0.00%	0.000%
78	11.878	3353	3355	3361	rVB	176	165	0.00%	0.000%
79	12.016	3396	3398	3404	rVB2	328	221	0.00%	0.001%
80	12.296	3483	3485	3489	rVB	358	171	0.00%	0.001%
81	12.350	3500	3502	3506	rVB	334	191	0.00%	0.001%
82	12.540	3559	3561	3568	rVB3	363	301	0.00%	0.001%
83	12.572	3568	3571	3573	rBV	205	183	0.00%	0.001%
84	12.698	3605	3610	3617	rVV2	584	651	0.00%	0.002%
85	12.993	3700	3702	3706	rBV2	264	196	0.00%	0.001%
86	13.212	3767	3770	3773	rBV2	268	220	0.00%	0.001%
87	13.325	3800	3805	3807	rBV4	390	350	0.00%	0.001%
88	13.489	3852	3856	3858	rBV	248	195	0.00%	0.001%
89	13.566	3876	3880	3883	rBV3	406	343	0.00%	0.001%
90	13.662	3907	3910	3911	rBV2	283	157	0.00%	0.000%
91	13.736	3929	3933	3936	rBV2	269	274	0.00%	0.001%
92	14.026	4020	4023	4026	rBV	264	237	0.00%	0.001%
93	14.389	4134	4136	4139	rBV2	302	208	0.00%	0.001%
94	14.402	4139	4140	4144	rVB2	338	165	0.00%	0.000%
95	14.585	4191	4197	4198	rBV2	361	352	0.00%	0.001%
96	14.620	4204	4208	4210	rBV3	468	354	0.00%	0.001%
97	15.009	4327	4329	4332	rBV2	285	205	0.00%	0.001%
98	15.116	4360	4362	4366	rVB3	585	319	0.00%	0.001%
99	15.579	4503	4506	4510	rBV3	612	488	0.00%	0.001%
100	16.328	4737	4739	4742	rBV3	1041	698	0.00%	0.002%

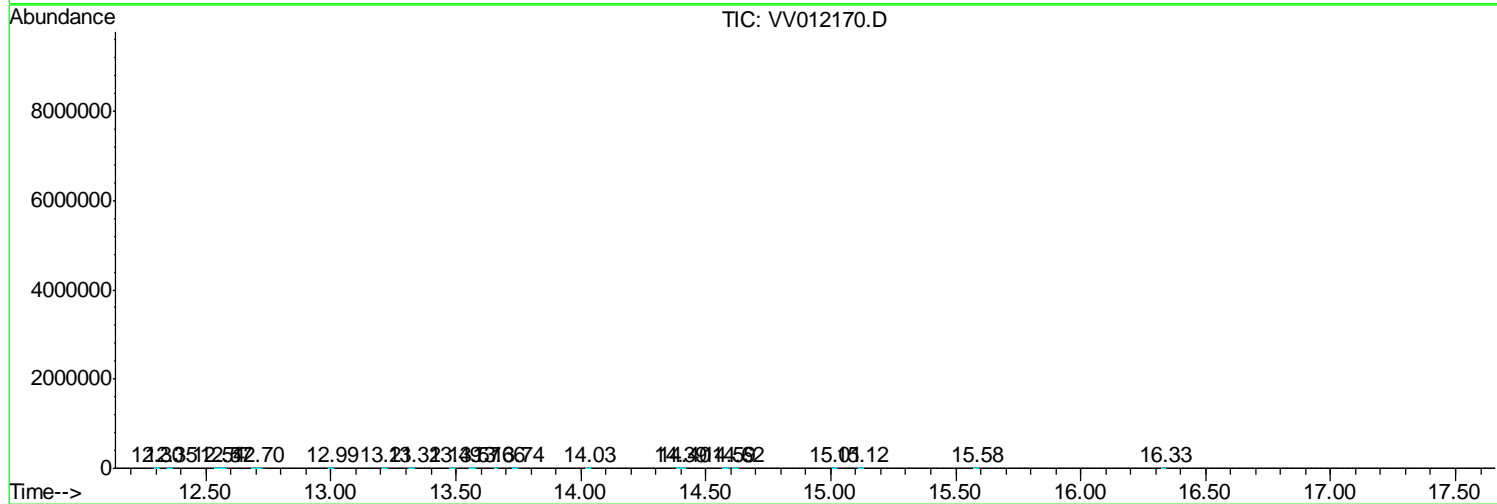
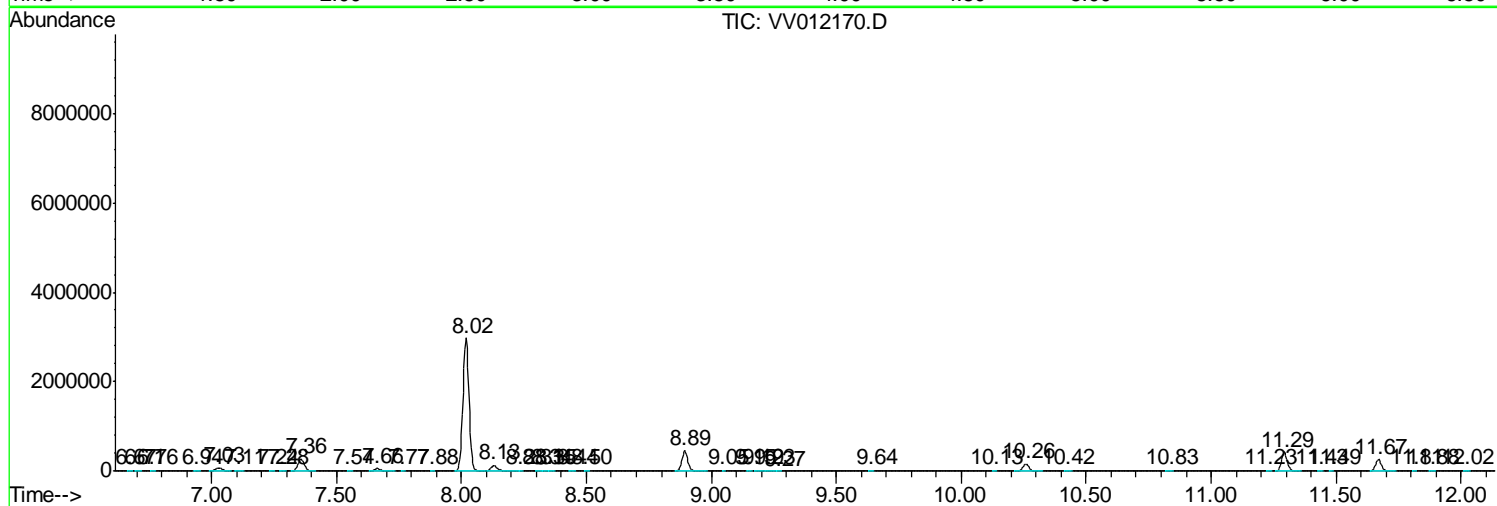
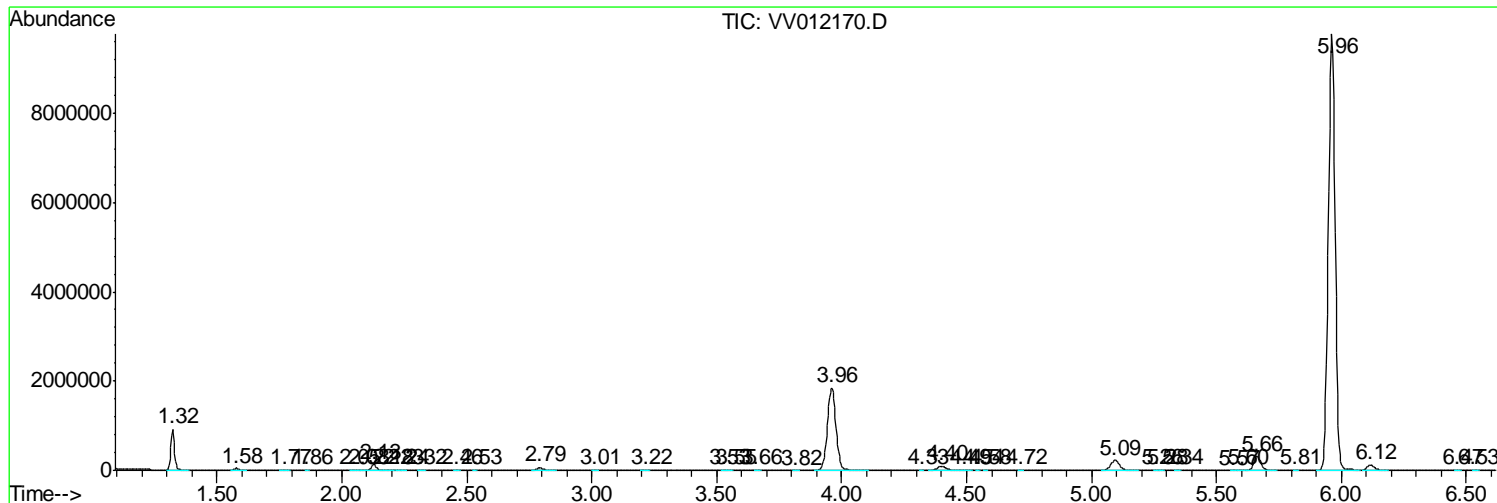
Sum of corrected areas: 34089178

Data Path : Z:\VOASRV\HPCHEM1\MSVOA V\DATA\VV081019\
 Data File : VV012170.D
 Acq On : 10 Aug 2019 00:03
 Operator : SY/MD
 Sample : K4248-07
 Misc : 5mL/MSVOA V/WATER
 ALS Vial : 19 Sample Multiplier: 1

Instrument :
 MSVOA_V
 ClientSampled :
 F2B14

Quant Method : Z:\VOASRV\HPCHEM1\MSVOA_V\METHOD\SOMVLM081019WMA.M
 Quant Title : VOC Analysis

TIC Library : C:\DATABASE\NIST11.L
 TIC Integration Parameters: LSCINT.P



Data Path : Z:\VOASRV\HPCHEM1\MSVOA V\DATA\VV081019\
 Data File : VV012170.D
 Acq On : 10 Aug 2019 00:03
 Operator : SY/MD
 Sample : K4248-07
 Misc : 5mL/MSVOA V/WATER
 ALS Vial : 19 Sample Multiplier: 1

Instrument :
 MSVOA_V
 ClientSampled :
 F2B14

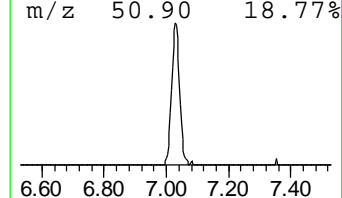
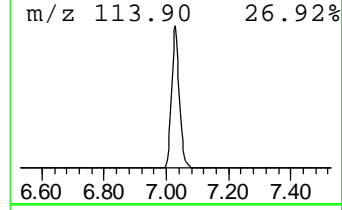
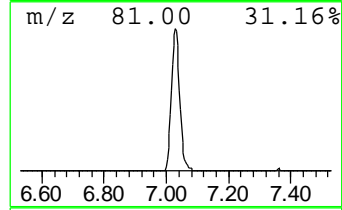
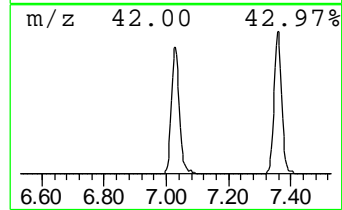
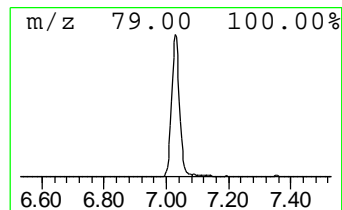
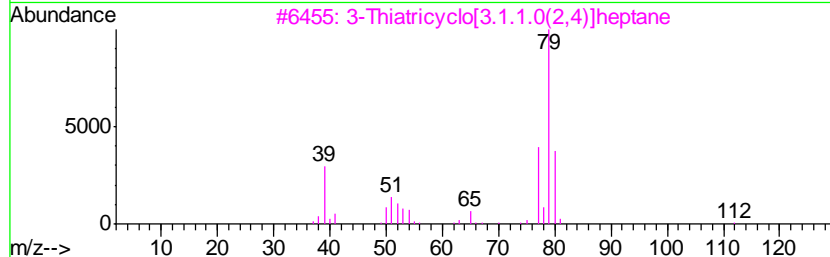
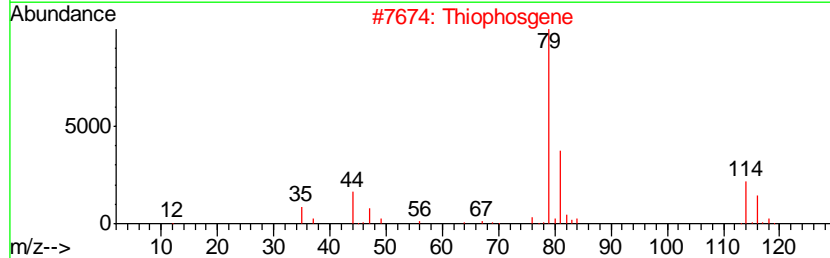
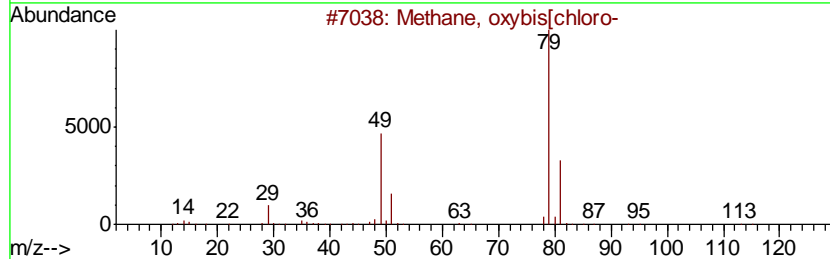
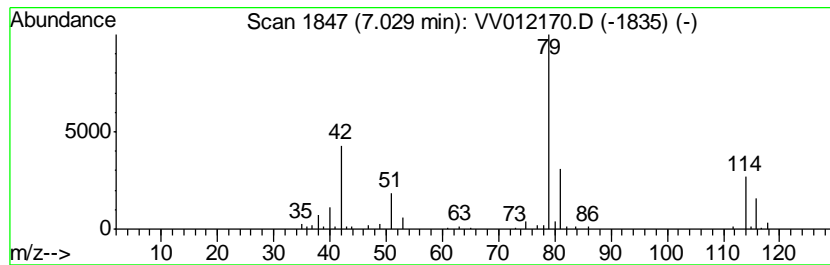
Quant Method : Z:\VOASRV\HPCHEM1\MSVOA_V\METHOD\SOMVLM081019WMA.M
 Quant Title : VOC Analysis

TIC Library : C:\DATABASE\NIST11.L
 TIC Integration Parameters: LSCINT.P

 Peak Number 1 unknown-01 Concentration Rank 1

R.T.	EstConc	Area	Relative to ISTD	R.T.
7.03	9.59 ug/L	117335	1,4-Difluorobenzene	5.66

Hit#	of	Tentative ID	MW	MolForm	CAS#	Qual
1	5	Methane, oxybis[chloro-	114	C2H4Cl2O	000542-88-1	43
2		Thiophosgene	114	CCl2S	000463-71-8	40
3		3-Thiatricyclo[3.1.1.0(2,4)]heptane	112	C6H8S	1000221-37-0	32
4		.alpha...alpha.-Dichloromethyl m...	114	C2H4Cl2O	004885-02-3	25
5		2-Propanol, 1,3-dichloro-	128	C3H6Cl2O	000096-23-1	25



Data Path : Z:\VOASRV\HPCHEM1\MSVOA_V\DATA\VV081019\
Data File : VV012170.D
Acq On : 10 Aug 2019 00:03
Operator : SY/MD
Sample : K4248-07
Misc : 5mL/MSVOA_V/WATER
ALS Vial : 19 Sample Multiplier: 1

Instrument :
MSVOA_V
ClientSampleId :
F2B14

Quant Method : Z:\VOASRV\HPCHEM1\MSVOA_V\METHOD\SOMVLM081019WMA.M
Quant Title : VOC Analysis

TIC Library : C:\DATABASE\NIST11.L
TIC Integration Parameters: LSCINT.P

TIC Top Hit name	RT	EstConc	Units	Response	--Internal Standard--			
					#	RT	Resp	Conc
unknown-01	7.03	9.6	ug/L	117335	1	5.66	611896	50.0