

Data Path : Z:\VOASRV\HPCHEM1\MSVOA V\DATA\VV081020\  
 Data File : VV017884.D  
 Acq On : 10 Aug 2020 09:31  
 Operator : SY/MD  
 Sample : VSTDCCC050  
 Misc : 5.0mL/MSVOA V/WATER  
 ALS Vial : 2 Sample Multiplier: 1

Instrument :  
 MSVOA\_V  
 ClientSampleId :  
 VSTD05095

Quant Time: Aug 11 01:14:10 2020  
 Quant Method : Z:\VOASRV\HPCHEM1\MSVOA\_V\METHOD\SOMVLM080820WMA.M  
 Quant Title : VOC Analysis  
 QLast Update : Mon Aug 10 15:54:14 2020  
 Response via : Initial Calibration

Internal Standards	R.T.	QIon	Response	Conc	Units	Dev(Min)
1) 1,4-Difluorobenzene	5.64	114	258885	50.00	ug/L	0.00
28) Chlorobenzene-d5	8.87	117	251216	50.00	ug/L	0.00
60) 1,4-Dichlorobenzene-d4	11.27	152	145036	50.00	ug/L	0.00

## System Monitoring Compounds

4) Vinyl Chloride-d3	1.31	65	67545	50.52	ug/L	0.00
Spiked Amount	50.000	Range	60 - 135	Recovery	=	101.04%
7) Chloroethane-d5	1.58	69	57118	50.29	ug/L	0.00
Spiked Amount	50.000	Range	70 - 130	Recovery	=	100.58%
11) 1,1-Dichloroethene-d2	2.12	63	158453	49.33	ug/L	0.00
Spiked Amount	50.000	Range	60 - 125	Recovery	=	98.66%
21) 2-Butanone-d5	3.91	46	90257	107.81	ug/L	0.00
Spiked Amount	100.000	Range	40 - 130	Recovery	=	107.81%
24) Chloroform-d	4.37	84	182844	52.16	ug/L	0.00
Spiked Amount	50.000	Range	70 - 125	Recovery	=	104.32%
26) 1,2-Dichloroethane-d4	5.05	65	136115	53.44	ug/L	0.00
Spiked Amount	50.000	Range	70 - 125	Recovery	=	106.88%
32) Benzene-d6	5.07	84	295960	51.02	ug/L	0.00
Spiked Amount	50.000	Range	70 - 125	Recovery	=	102.04%
36) 1,2-Dichloropropane-d6	6.09	67	76241	51.83	ug/L	0.00
Spiked Amount	50.000	Range	70 - 120	Recovery	=	103.66%
41) Toluene-d8	7.33	98	293726	50.38	ug/L	0.00
Spiked Amount	50.000	Range	80 - 120	Recovery	=	100.76%
43) trans-1,3-Dichloropropene-	7.64	79	54965	58.03	ug/L	0.00
Spiked Amount	50.000	Range	60 - 125	Recovery	=	116.06%
47) 2-Hexanone-d5	8.11	63	57404	107.75	ug/L	0.00
Spiked Amount	100.000	Range	45 - 130	Recovery	=	107.75%
57) 1,1,2,2-Tetrachloroethane-	10.23	84	118018	51.47	ug/L	0.00
Spiked Amount	50.000	Range	65 - 120	Recovery	=	102.94%
64) 1,2-Dichlorobenzene-d4	11.65	152	146403	49.52	ug/L	0.00
Spiked Amount	50.000	Range	80 - 120	Recovery	=	99.04%

## Target Compounds

Target Compounds	R.T.	QIon	Response	Conc	Units	Ovalue
2) Dichlorodifluoromethane	1.14	85	108821	52.868	ug/L	99
3) Chloromethane	1.25	50	63801	48.995	ug/L	96
5) Vinyl chloride	1.32	62	74253	49.089	ug/L	98
6) Bromomethane	1.53	94	53397	51.896	ug/L	98
8) Chloroethane	1.59	64	48942	51.267	ug/L	94
9) Trichlorofluoromethane	1.76	101	187250	50.299	ug/L	98
10) 1,1,2-Trichloro-1,2,2-trif	2.13	101	85025	51.407	ug/L	97
12) 1,1-Dichloroethene	2.13	96	74781	49.031	ug/L	96
13) Acetone	2.19	43	136929	125.686	ug/L	100
14) Carbon disulfide	2.31	76	191023	54.342	ug/L	97
15) Methyl Acetate	2.44	43	62764	52.236	ug/L	97
16) Methylene chloride	2.52	84	80564	50.237	ug/L	99
17) trans-1,2-Dichloroethene	2.78	96	78068	50.150	ug/L	91
18) Methyl tert-butyl Ether	2.78	73	276485	51.590	ug/L	99
19) 1,1-Dichloroethane	3.21	63	132123	51.428	ug/L	98
20) cis-1,2-Dichloroethene	3.93	96	86784	51.618	ug/L	95
22) 2-Butanone	3.99	43	116224	122.887	ug/L	96

Data Path : Z:\VOASRV\HPCHEM1\MSVOA V\DATA\VV081020\  
 Data File : VV017884.D  
 Acq On : 10 Aug 2020 09:31  
 Operator : SY/MD  
 Sample : VSTDCCC050  
 Misc : 5.0mL/MSVOA V/WATER  
 ALS Vial : 2 Sample Multiplier: 1

Instrument :  
 MSVOA\_V  
 ClientSampleId :  
 VSTD05095

Quant Time: Aug 11 01:14:10 2020  
 Quant Method : Z:\VOASRV\HPCHEM1\MSVOA\_V\METHOD\SOMVLM080820WMA.M  
 Quant Title : VOC Analysis  
 QLast Update : Mon Aug 10 15:54:14 2020  
 Response via : Initial Calibration

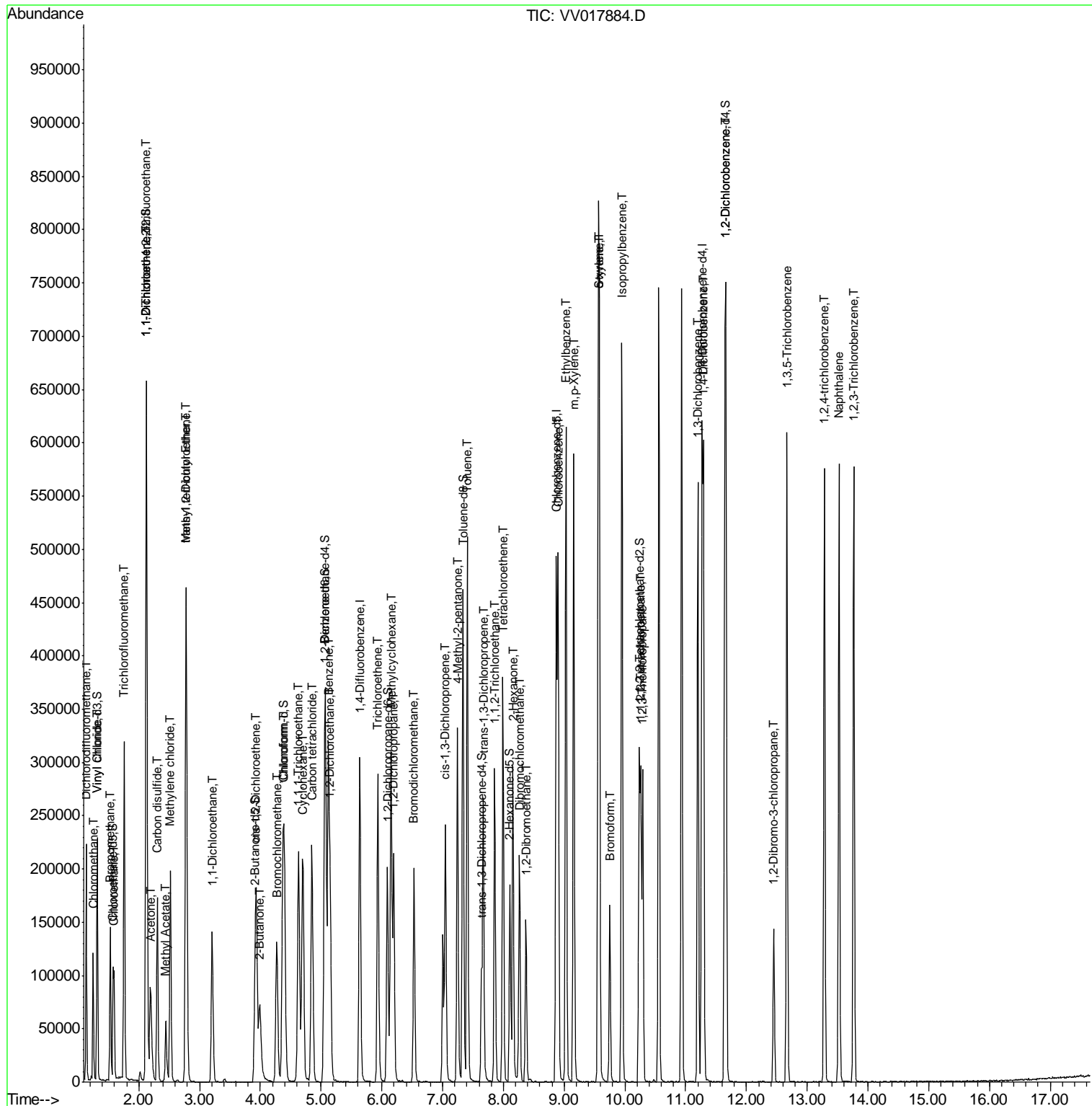
Internal Standards	R.T.	QIon	Response	Conc	Units	Dev(Min)
23) Bromochloromethane	4.27	128	52433	52.191	ug/L	99
25) Chloroform	4.40	83	168777	51.062	ug/L	98
27) 1,2-Dichloroethane	5.15	62	151154	50.655	ug/L	99
29) Cyclohexane	4.70	56	102829	51.377	ug/L	99
30) 1,1,1-Trichloroethane	4.63	97	175383	49.876	ug/L	98
31) Carbon tetrachloride	4.85	117	162887	51.894	ug/L	99
33) Benzene	5.12	78	299381	50.391	ug/L	100
34) Trichloroethene	5.94	95	92416	51.490	ug/L	99
35) Methylcyclohexane	6.15	83	131503	51.448	ug/L	98
37) 1,2-Dichloropropane	6.20	63	68205	52.493	ug/L	98
38) Bromodichloromethane	6.53	83	129258	54.784	ug/L	99
39) cis-1,3-Dichloropropene	7.05	75	128631	57.566	ug/L	96
40) 4-Methyl-2-pentanone	7.24	43	182959	107.937	ug/L	100
42) Toluene	7.41	91	358091	51.713	ug/L	98
44) trans-1,3-Dichloropropene	7.67	75	137735	58.650	ug/L	97
45) 1,1,2-Trichloroethane	7.86	97	82195	50.274	ug/L	96
46) Tetrachloroethene	7.99	164	85363	50.460	ug/L	91
48) 2-Hexanone	8.15	43	161162	113.564	ug/L	99
49) Dibromochloromethane	8.26	129	107626	59.146	ug/L	98
50) 1,2-Dibromoethane	8.37	107	93896	52.105	ug/L	95
51) Chlorobenzene	8.90	112	248981	51.684	ug/L	99
52) Ethylbenzene	9.03	91	406145	51.046	ug/L	99
53) m,p-Xylene	9.16	106	155361	50.234	ug/L	99
54) o-xylene	9.56	106	155665	51.251	ug/L	98
55) Styrene	9.58	104	271765	52.178	ug/L	99
56) Isopropylbenzene	9.95	105	429155	51.121	ug/L	100
58) 1,1,2,2-Tetrachloroethane	10.26	83	113101	51.361	ug/L	96
59) 1,2,3-Trichloropropane	10.29	75	103871	51.916	ug/L	99
61) Bromoform	9.75	173	75911	60.901	ug/L	97
62) 1,3-Dichlorobenzene	11.20	146	227065	51.206	ug/L	99
63) 1,4-Dichlorobenzene	11.29	146	226891	50.375	ug/L	99
65) 1,2-Dichlorobenzene	11.67	146	227737	50.477	ug/L	99
66) 1,2-Dibromo-3-chloropropan	12.45	75	34790	58.914	ug/L	95
67) 1,3,5-Trichlorobenzene	12.67	180	184896	51.301	ug/L	100
68) 1,2,4-trichlorobenzene	13.28	180	168205	53.286	ug/L	96
69) Naphthalene	13.52	128	442834	54.936	ug/L	100
70) 1,2,3-Trichlorobenzene	13.77	180	173940	54.589	ug/L	99

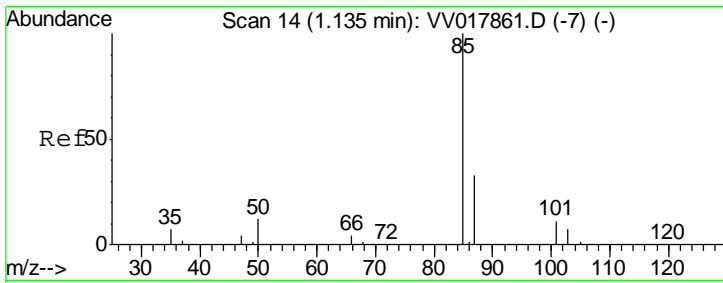
(#) = qualifier out of range (m) = manual integration (+) = signals summed

Data Path : Z:\VOASRV\HPCHEM1\MSVOA V\DATA\VV081020\  
 Data File : VV017884.D  
 Acq On : 10 Aug 2020 09:31  
 Operator : SY/MD  
 Sample : VSTDCCC050  
 Misc : 5.0mL/MSVOA V/WATER  
 ALS Vial : 2 Sample Multiplier: 1

Instrument :  
 MSVOA\_V  
 Client Sampled :  
 VSTD05095

Quant Time: Aug 11 01:14:10 2020  
 Quant Method : Z:\VOASRV\HPCHEM1\MSVOA\_V\METHOD\SOMVLM080820WMA.M  
 Quant Title : VOC Analysis  
 QLast Update : Mon Aug 10 15:54:14 2020  
 Response via : Initial Calibration

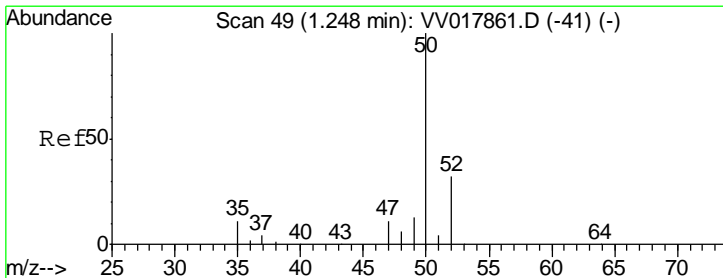
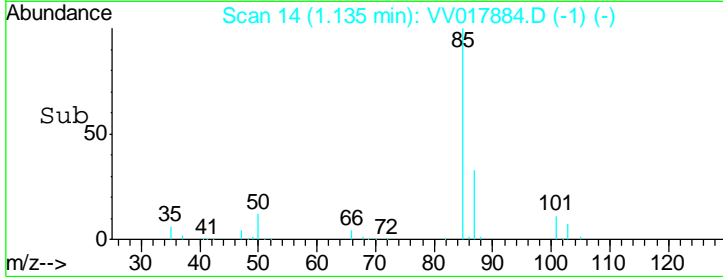
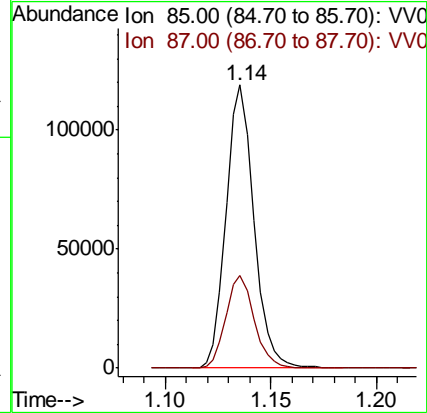
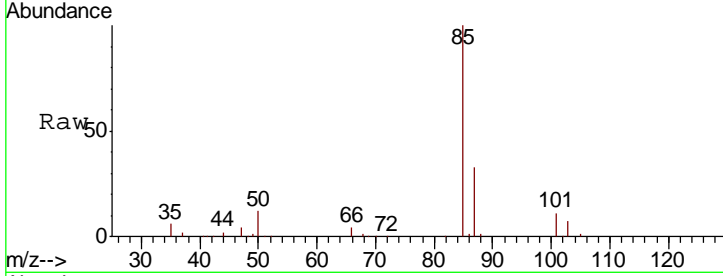




#2  
 Dichlorodifluoromethane  
 Concen: 52.868 ug/L  
 RT: 1.14 min Scan# 14  
 Delta R.T. -0.00 min  
 Lab File: VV017884.D  
 Acq: 10 Aug 2020 09:31

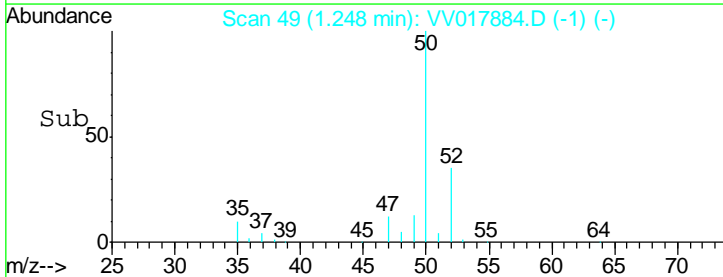
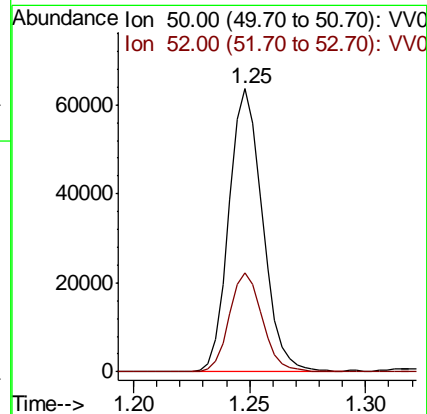
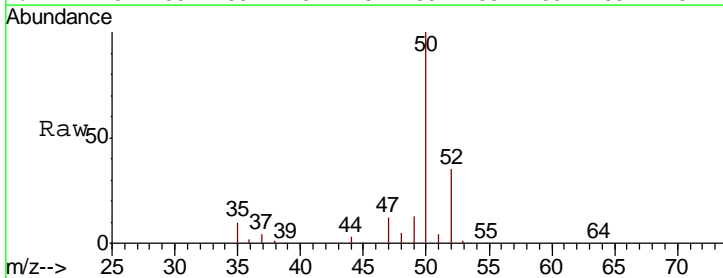
**Instrument :**  
 MSVOA\_V  
**ClientSampled :**  
 VSTD05095

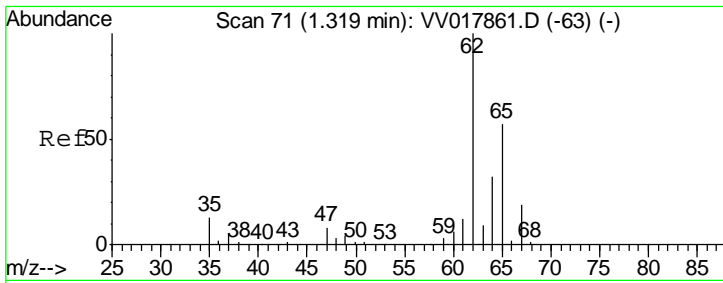
Tgt Ion: 85 Resp: 108821  
 Ion Ratio Lower Upper  
 85 100  
 87 33.4 26.3 39.5



#3  
 Chloromethane  
 Concen: 48.995 ug/L  
 RT: 1.25 min Scan# 49  
 Delta R.T. -0.00 min  
 Lab File: VV017884.D  
 Acq: 10 Aug 2020 09:31

Tgt Ion: 50 Resp: 63801  
 Ion Ratio Lower Upper  
 50 100  
 52 34.9 22.7 42.3

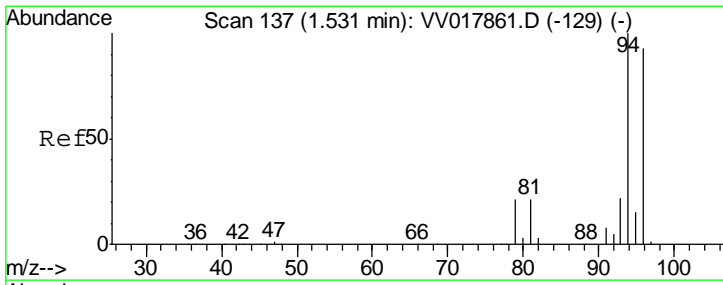
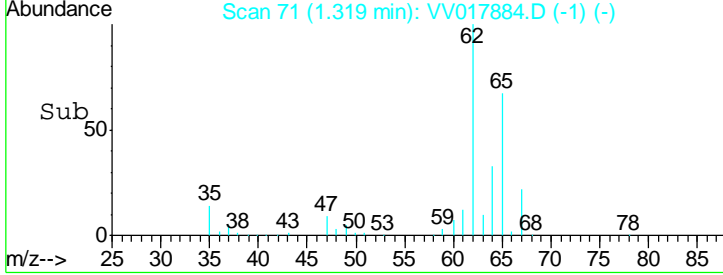
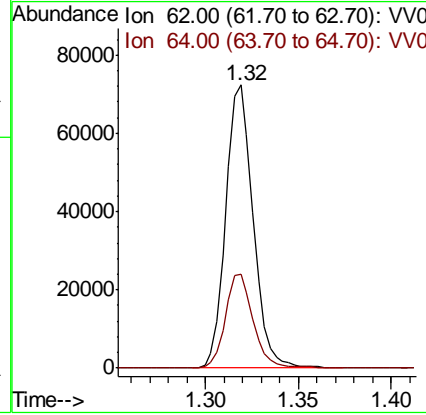
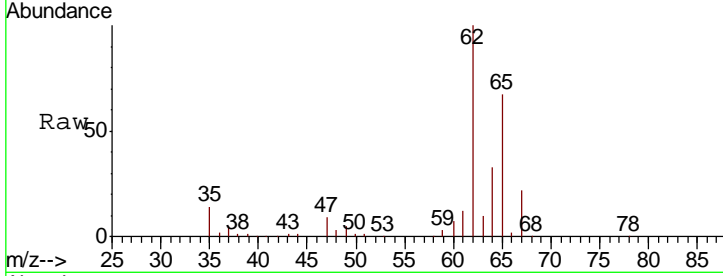




#5  
 Vinyl chloride  
 Concen: 49.089 ug/L  
 RT: 1.32 min Scan# 71  
 Delta R.T. -0.00 min  
 Lab File: VV017884.D  
 Acq: 10 Aug 2020 09:31

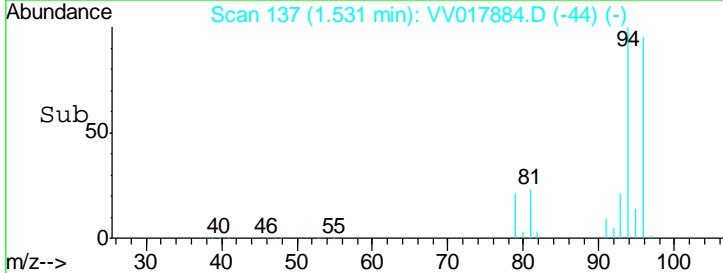
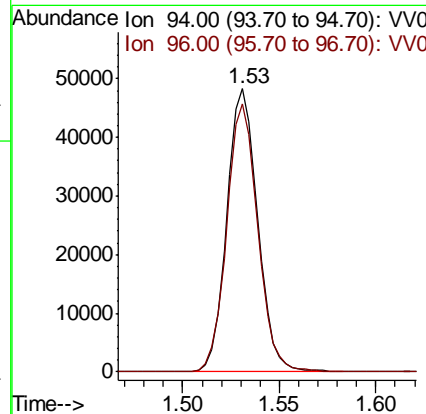
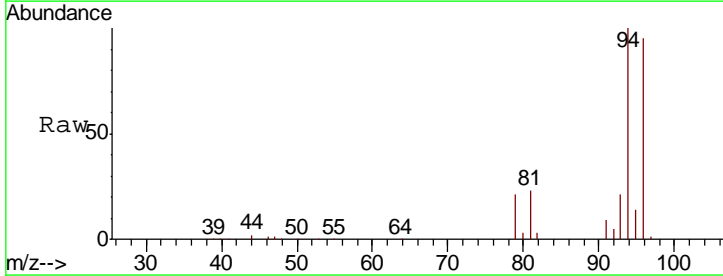
Instrument : MSVOA\_V  
 ClientSampled : VSTD05095

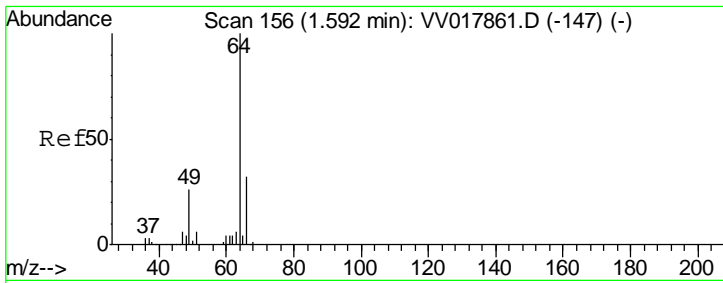
Tgt Ion	Resp	Lower	Upper
62	100		
64	33.4	24.0	44.6



#6  
 Bromomethane  
 Concen: 51.896 ug/L  
 RT: 1.53 min Scan# 137  
 Delta R.T. -0.00 min  
 Lab File: VV017884.D  
 Acq: 10 Aug 2020 09:31

Tgt Ion	Resp	Lower	Upper
94	100		
96	94.8	67.5	125.3

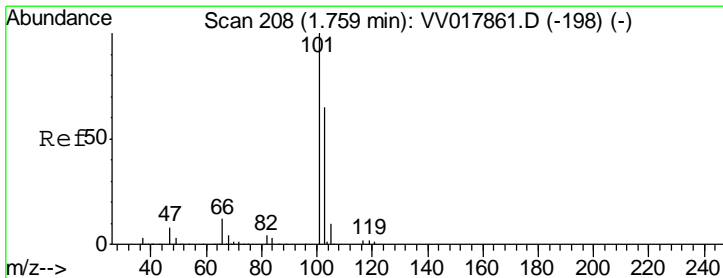
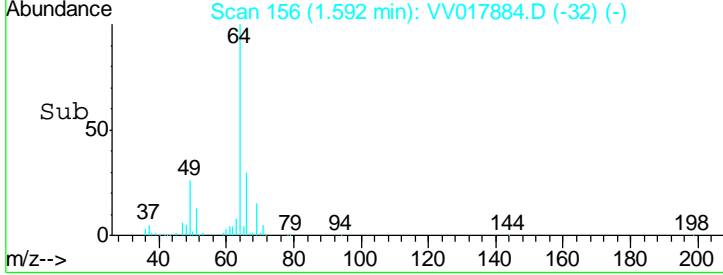
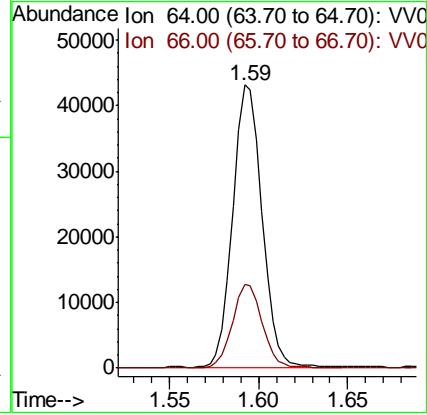
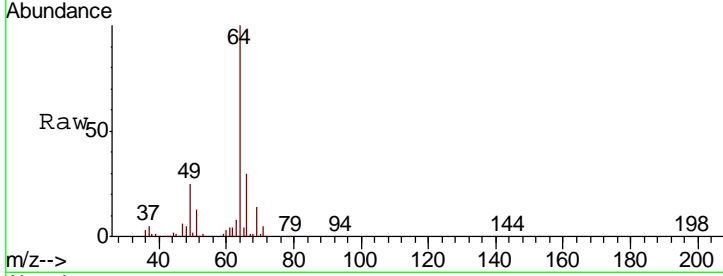




#8  
 Chloroethane  
 Concen: 51.267 ug/L  
 RT: 1.59 min Scan# 156  
 Delta R.T. -0.00 min  
 Lab File: VV017884.D  
 Acq: 10 Aug 2020 09:31

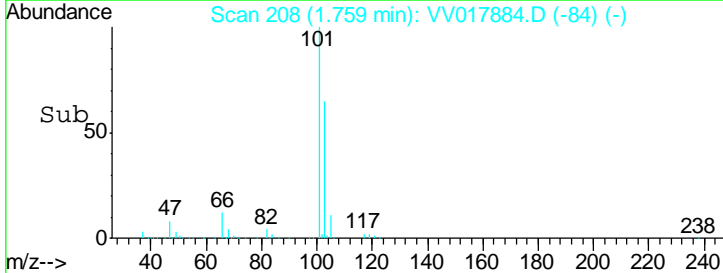
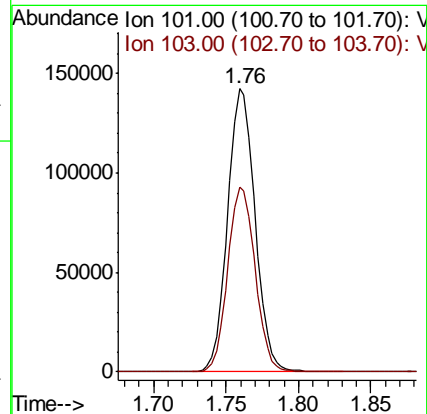
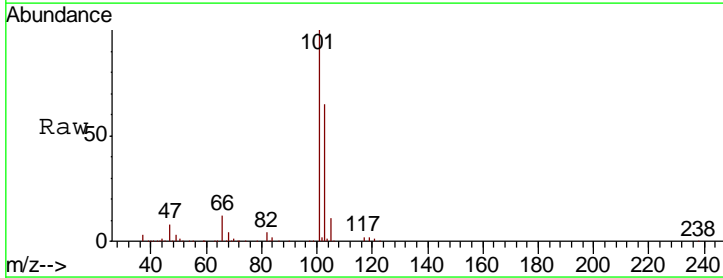
Instrument :  
 MSVOA\_V  
 ClientSampled :  
 VSTD05095

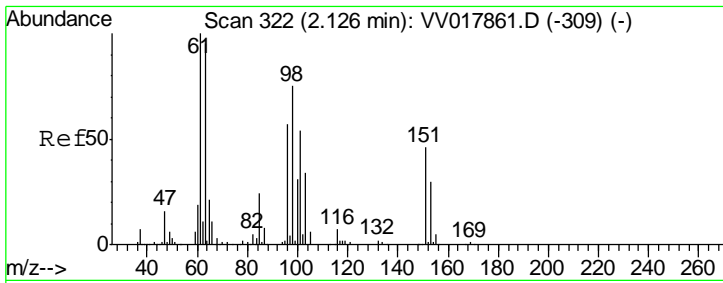
Tgt Ion	Resp	Lower	Upper
64	100		
66	29.8	23.1	42.9



#9  
 Trichlorofluoromethane  
 Concen: 50.299 ug/L  
 RT: 1.76 min Scan# 208  
 Delta R.T. -0.00 min  
 Lab File: VV017884.D  
 Acq: 10 Aug 2020 09:31

Tgt Ion	Resp	Lower	Upper
101	100		
103	65.3	53.2	79.8

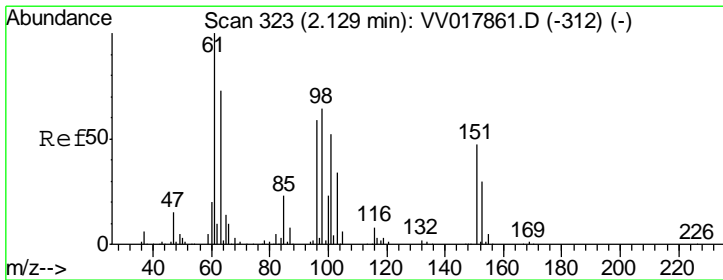
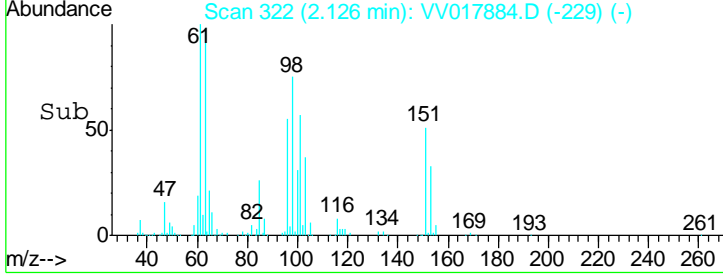
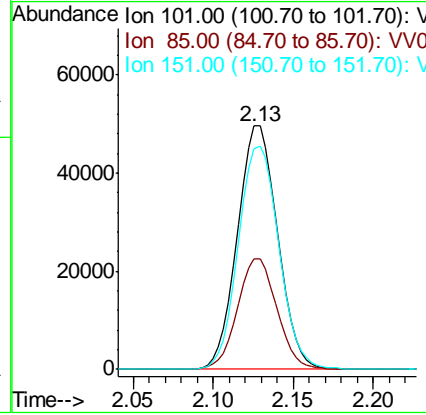
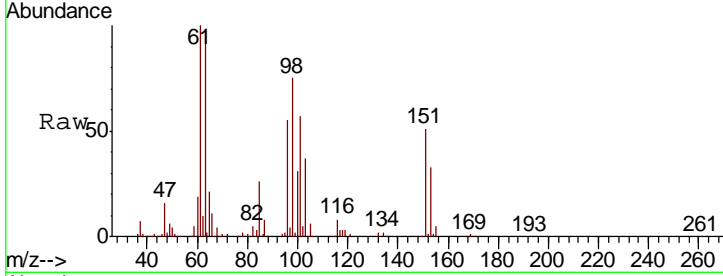




#10  
 1,1,2-Trichloro-1,2,2-trifluoroethane  
 Concen: 51.407 ug/L  
 RT: 2.13 min Scan# 322  
 Delta R.T. -0.00 min  
 Lab File: VV017884.D  
 Acq: 10 Aug 2020 09:31

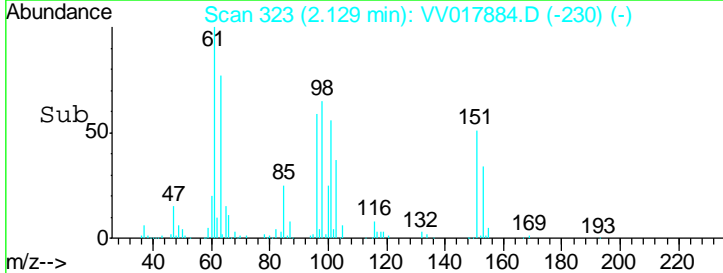
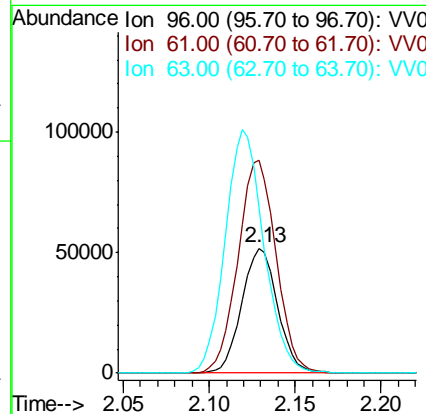
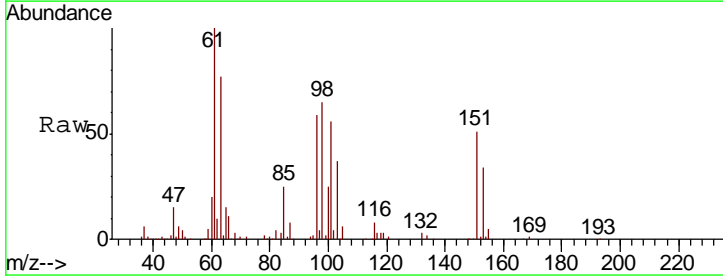
Instrument :  
 MSVOA\_V  
 ClientSampled :  
 VSTD05095

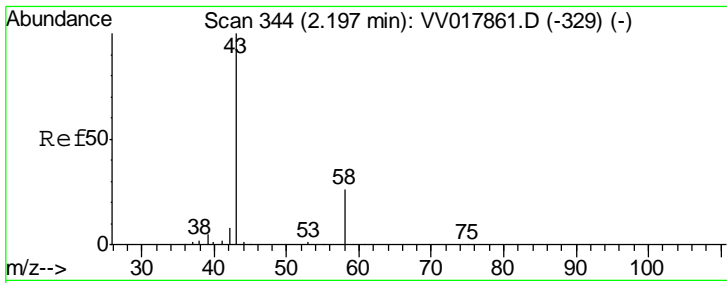
Tgt Ion	Resp	Lower	Upper
101	85025		
101	100		
85	44.5	35.0	52.6
151	92.5	71.0	106.6



#12  
 1,1-Dichloroethene  
 Concen: 49.031 ug/L  
 RT: 2.13 min Scan# 323  
 Delta R.T. -0.00 min  
 Lab File: VV017884.D  
 Acq: 10 Aug 2020 09:31

Tgt Ion	Resp	Lower	Upper
96	74781		
96	100		
61	170.4	121.1	224.9
63	131.9	98.1	182.1

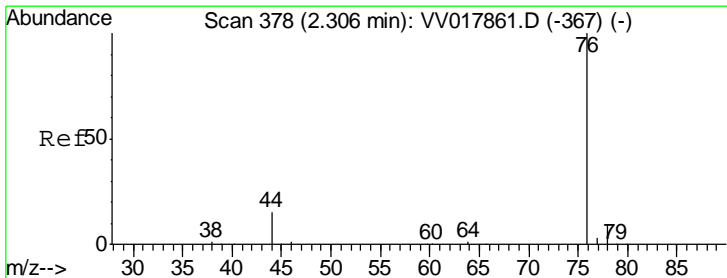
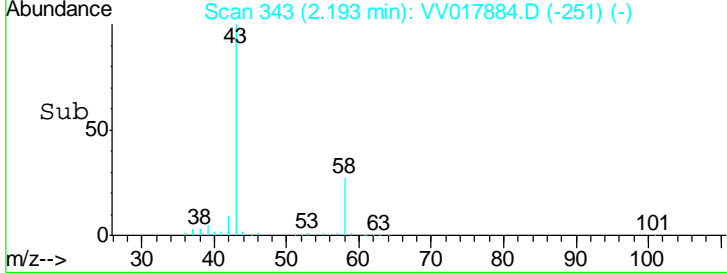
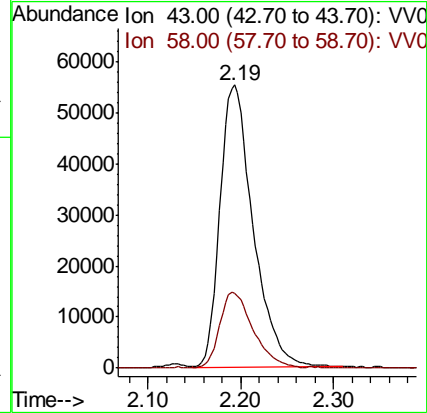
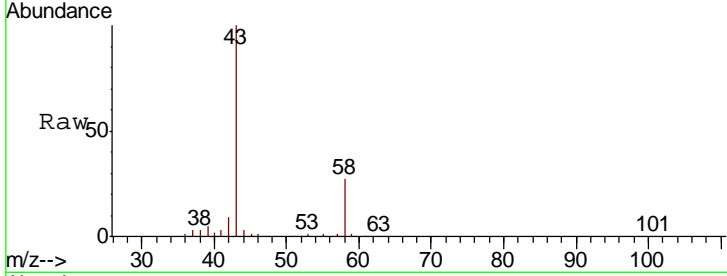




#13  
 Acetone  
 Concen: 125.686 ug/L  
 RT: 2.19 min Scan# 343  
 Delta R.T. -0.00 min  
 Lab File: VV017884.D  
 Acq: 10 Aug 2020 09:31

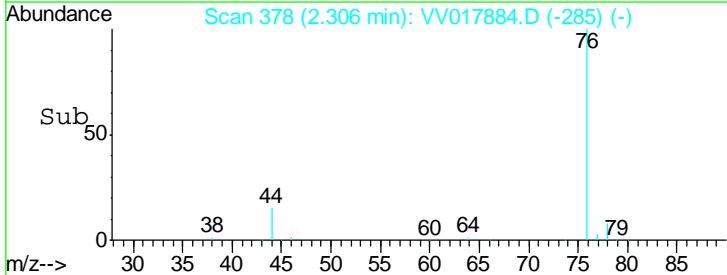
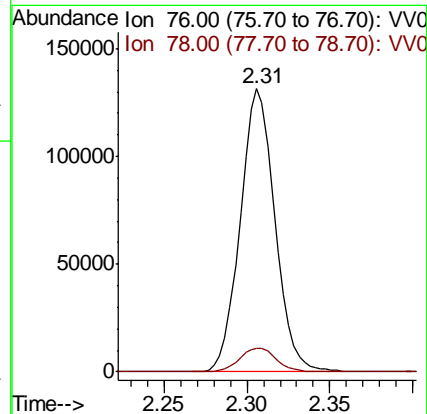
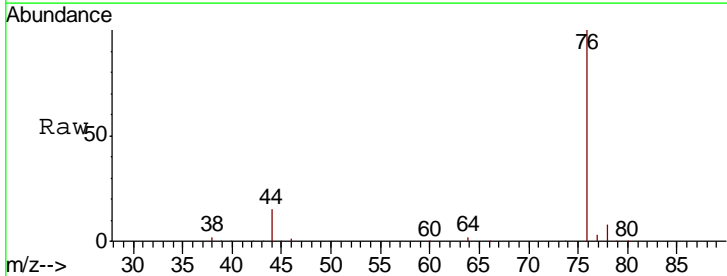
Instrument : MSVOA\_V  
 ClientSampled : VSTD05095

Tgt Ion	Resp	Lower	Upper
43	136929		
58	27.3	0.0	54.8

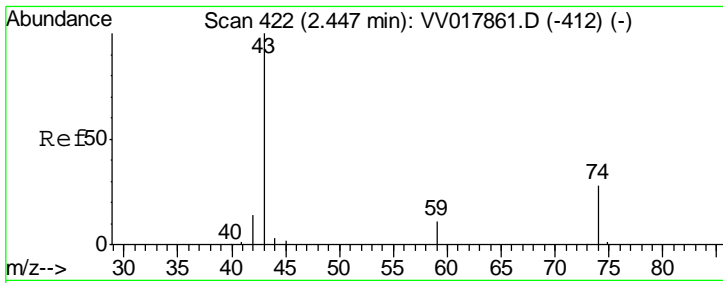


#14  
 Carbon disulfide  
 Concen: 54.342 ug/L  
 RT: 2.31 min Scan# 378  
 Delta R.T. -0.00 min  
 Lab File: VV017884.D  
 Acq: 10 Aug 2020 09:31

Tgt Ion	Resp	Lower	Upper
76	191023		
78	8.5	7.6	11.4



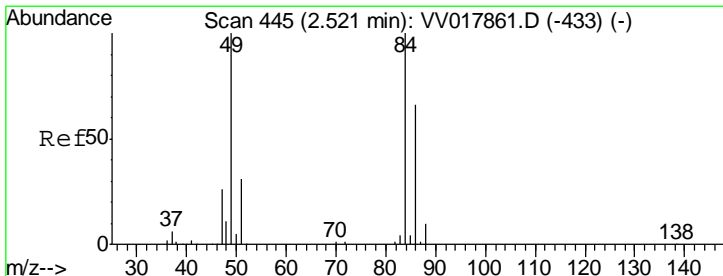
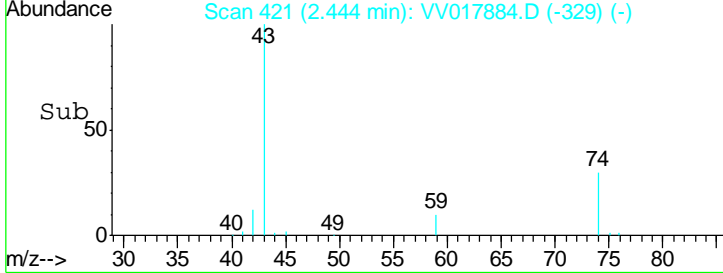
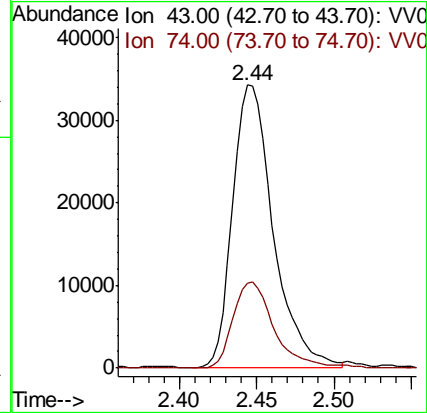
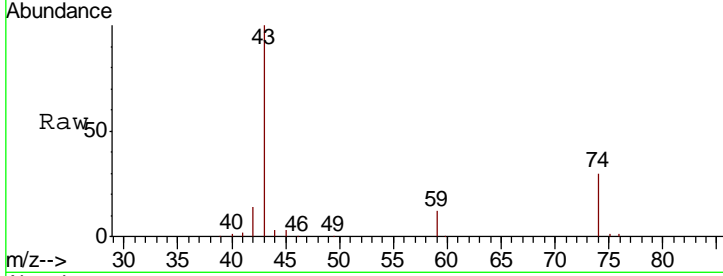




#15  
 Methyl Acetate  
 Concen: 52.236 ug/L  
 RT: 2.44 min Scan# 421  
 Delta R.T. -0.00 min  
 Lab File: VV017884.D  
 Acq: 10 Aug 2020 09:31

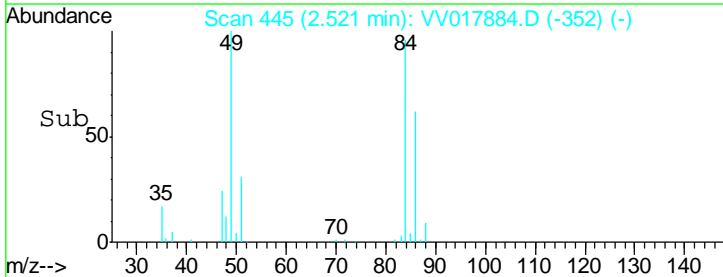
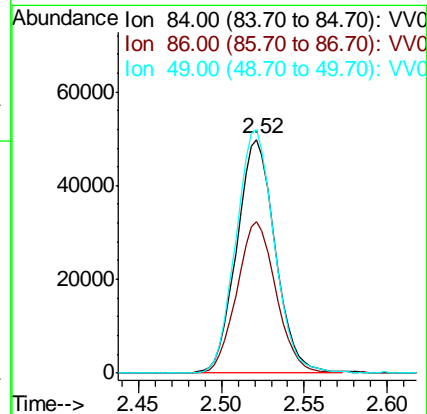
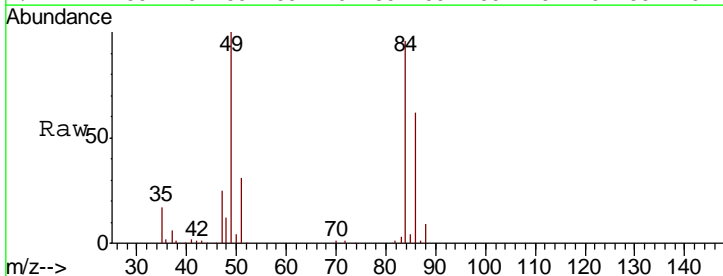
Instrument :  
 MSVOA\_V  
 ClientSampled :  
 VSTD05095

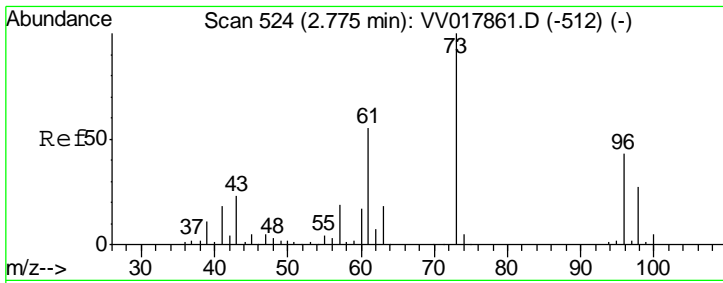
Tgt Ion	Resp	Lower	Upper
43	100		
74	30.2	23.0	34.6



#16  
 Methylene chloride  
 Concen: 50.237 ug/L  
 RT: 2.52 min Scan# 445  
 Delta R.T. -0.00 min  
 Lab File: VV017884.D  
 Acq: 10 Aug 2020 09:31

Tgt Ion	Resp	Lower	Upper
84	100		
86	65.1	46.2	85.8
49	104.2	73.6	136.6

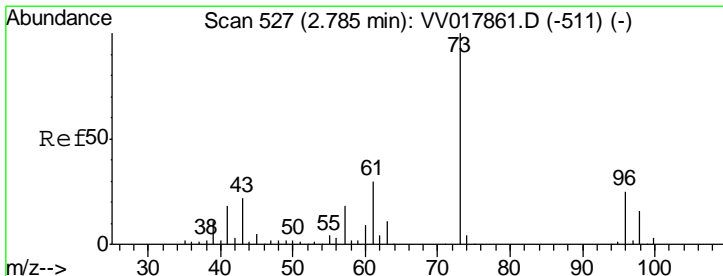
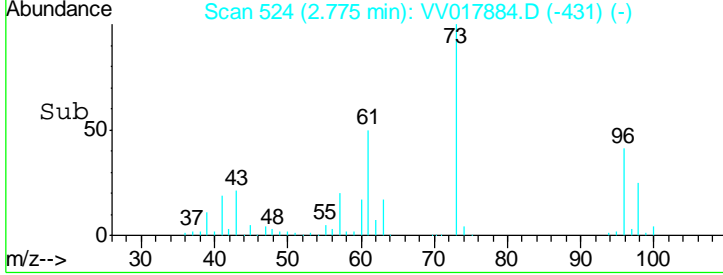
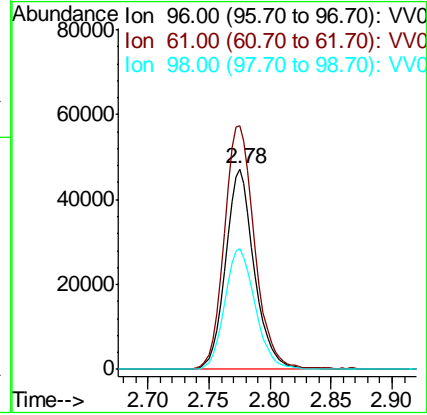
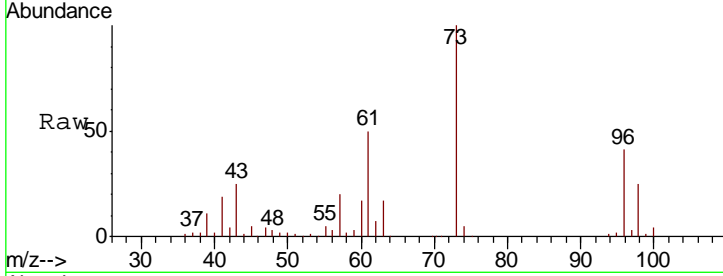




#17  
 trans-1,2-Dichloroethene  
 Concen: 50.150 ug/L  
 RT: 2.78 min Scan# 524  
 Delta R.T. -0.00 min  
 Lab File: VV017884.D  
 Acq: 10 Aug 2020 09:31

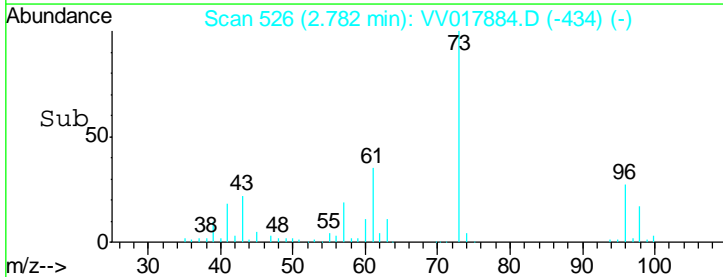
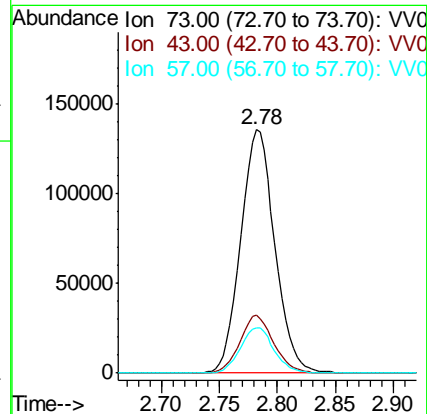
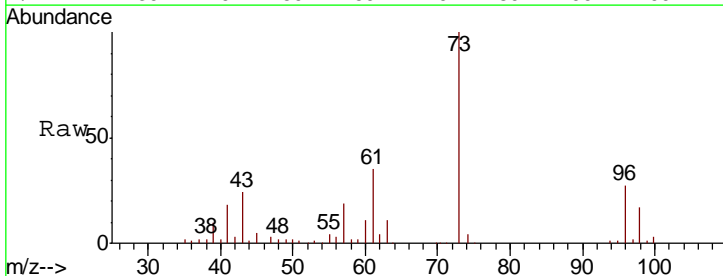
**Instrument :**  
 MSVOA\_V  
**ClientSampled :**  
 VSTD05095

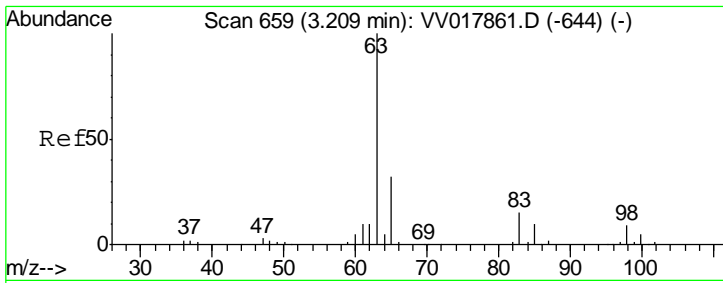
Tgt Ion	Resp	Lower	Upper
96	78068		
Ion Ratio			
96	100		
61	121.6	92.4	171.6
98	60.2	47.5	88.1



#18  
 Methyl tert-butyl Ether  
 Concen: 51.590 ug/L  
 RT: 2.78 min Scan# 526  
 Delta R.T. -0.00 min  
 Lab File: VV017884.D  
 Acq: 10 Aug 2020 09:31

Tgt Ion	Resp	Lower	Upper
73	276485		
Ion Ratio			
73	100		
43	23.4	18.1	27.1
57	18.5	14.5	21.7

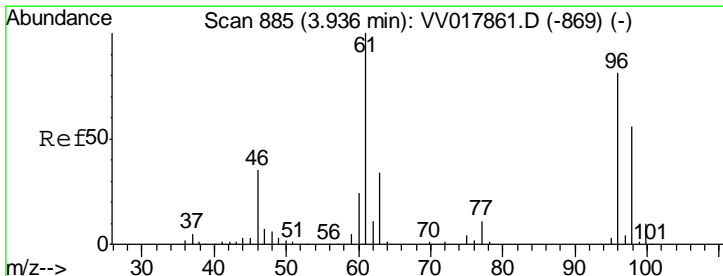
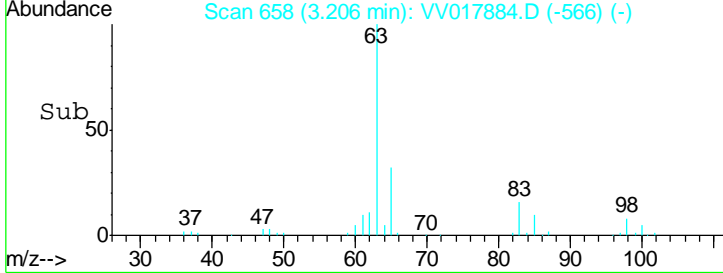
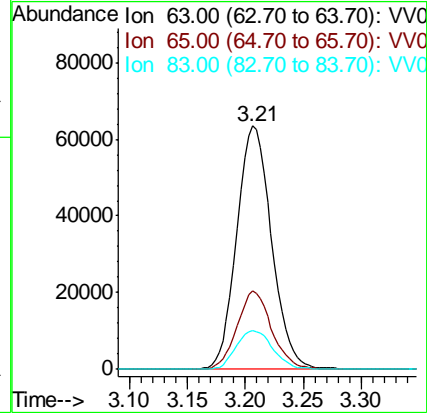
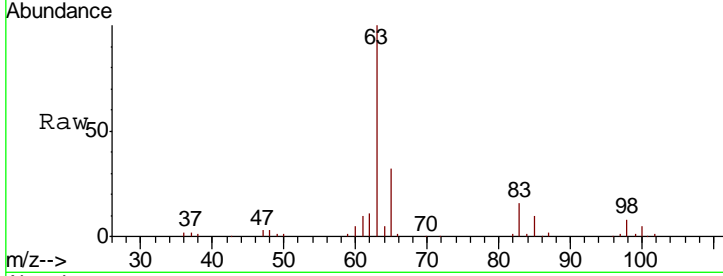




#19  
 1,1-Dichloroethane  
 Concen: 51.428 ug/L  
 RT: 3.21 min Scan# 658  
 Delta R.T. -0.00 min  
 Lab File: VV017884.D  
 Acq: 10 Aug 2020 09:31

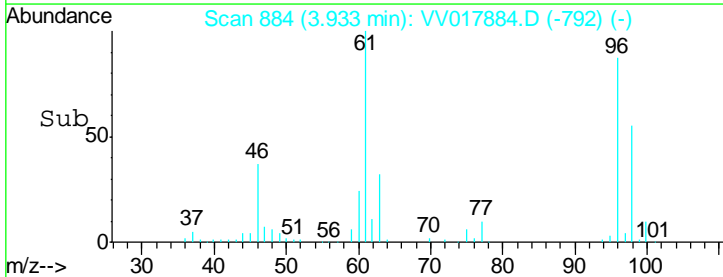
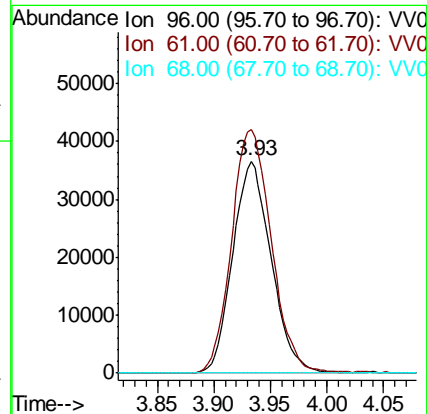
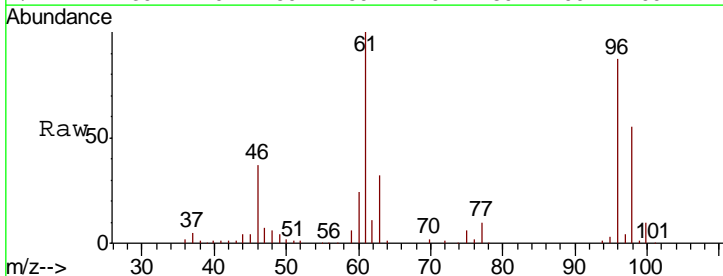
Instrument :  
 MSVOA\_V  
 ClientSampleID :  
 VSTD05095

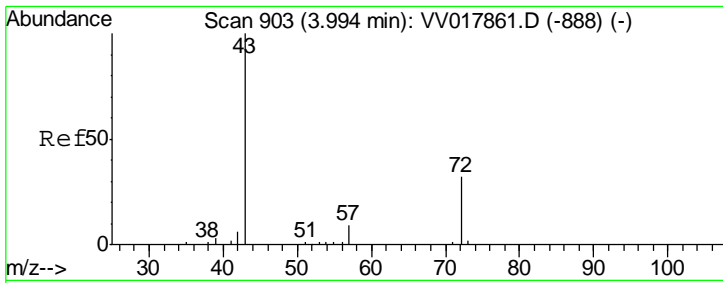
Tgt Ion	Resp	Lower	Upper
63	132123		
65	32.3	23.4	43.6
83	15.8	11.5	21.5



#20  
 cis-1,2-Dichloroethene  
 Concen: 51.618 ug/L  
 RT: 3.93 min Scan# 884  
 Delta R.T. -0.00 min  
 Lab File: VV017884.D  
 Acq: 10 Aug 2020 09:31

Tgt Ion	Resp	Lower	Upper
96	86784		
61	115.0	84.4	156.8
68	0.0	0.0	0.0



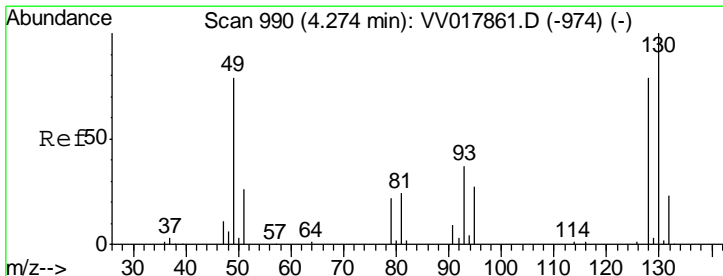
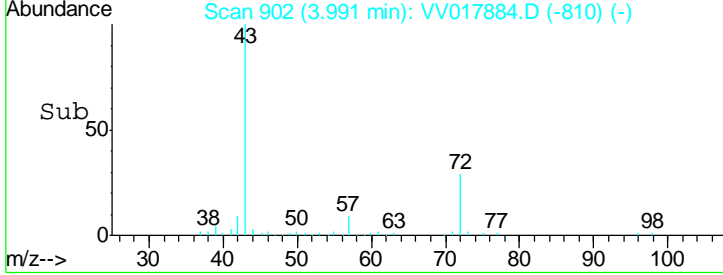
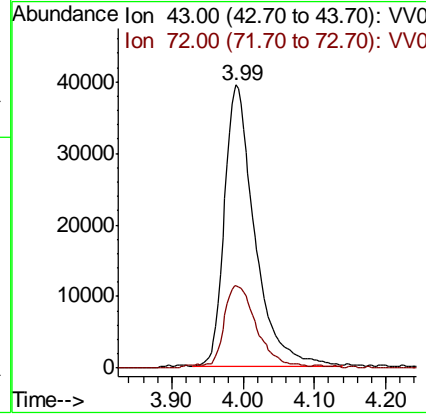
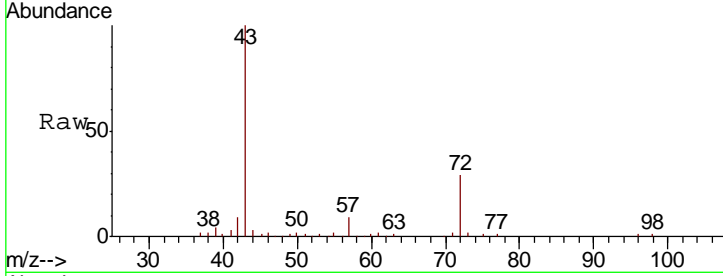


#22  
 2-Butanone  
 Concen: 122.887 ug/L  
 RT: 3.99 min Scan# 902  
 Delta R.T. -0.00 min  
 Lab File: VV017884.D  
 Acq: 10 Aug 2020 09:31

**Instrument :**  
 MSVOA\_V  
**ClientSampled :**  
 VSTD05095

Tgt Ion: 43 Resp: 116224

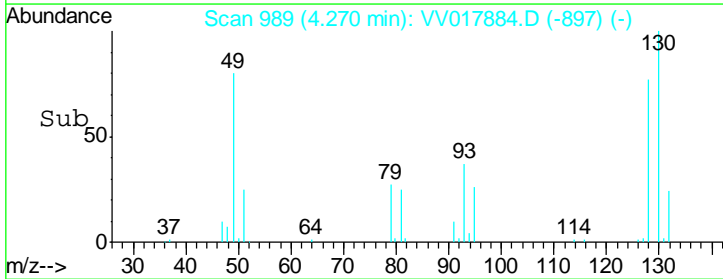
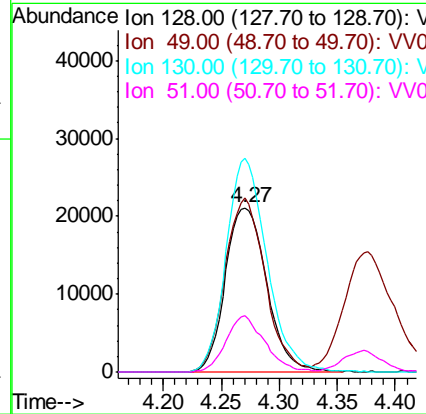
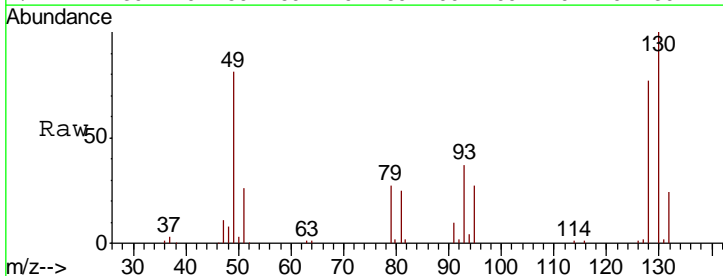
Ion	Ratio	Lower	Upper
43	100		
72	31.7	14.9	44.7

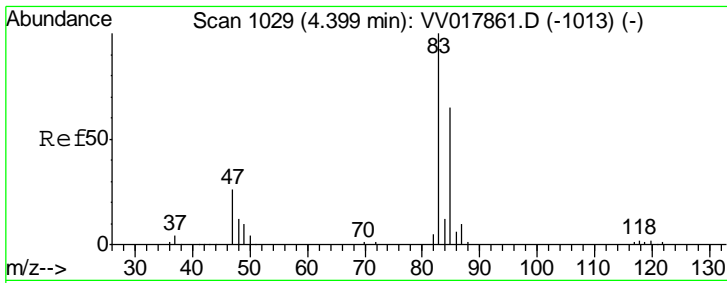


#23  
 Bromochloromethane  
 Concen: 52.191 ug/L  
 RT: 4.27 min Scan# 989  
 Delta R.T. -0.00 min  
 Lab File: VV017884.D  
 Acq: 10 Aug 2020 09:31

Tgt Ion: 128 Resp: 52433

Ion	Ratio	Lower	Upper
128	100		
49	105.8	73.7	136.9
130	130.0	89.3	165.9
51	34.4	27.2	40.8



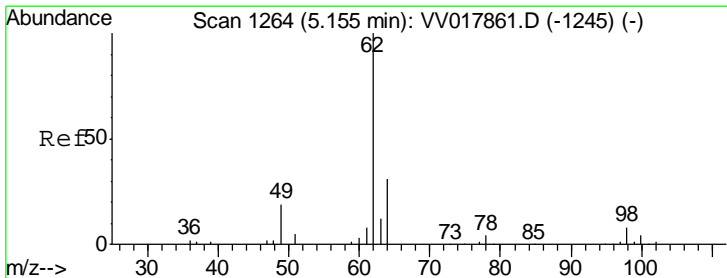
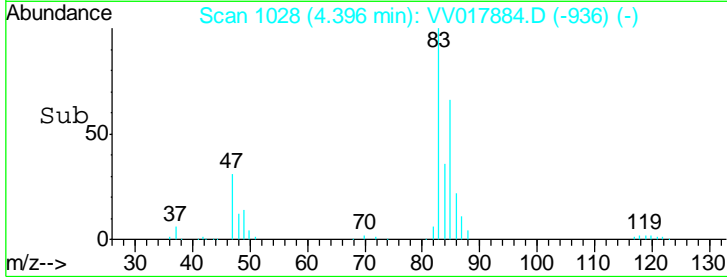
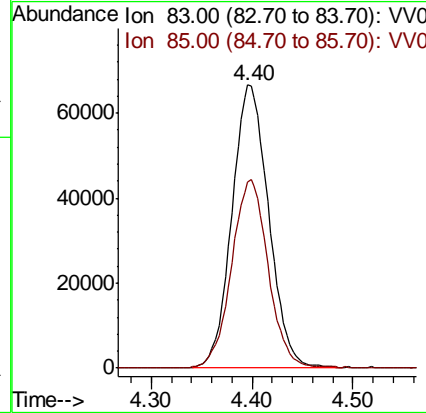
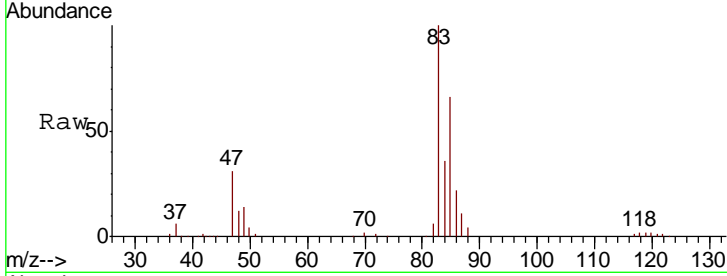


#25  
 Chloroform  
 Concen: 51.062 ug/L  
 RT: 4.40 min Scan# 1028  
 Delta R.T. -0.00 min  
 Lab File: VV017884.D  
 Acq: 10 Aug 2020 09:31

Instrument : MSVOA\_V  
 ClientSampled : VSTD05095

Tgt Ion: 83 Resp: 168777

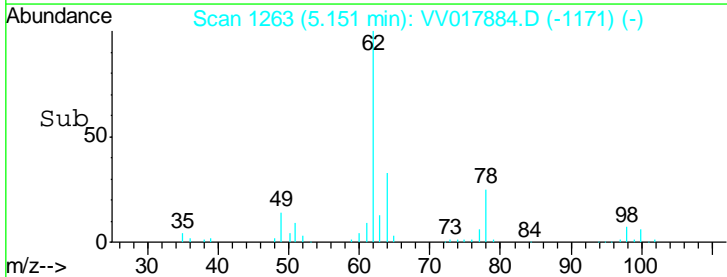
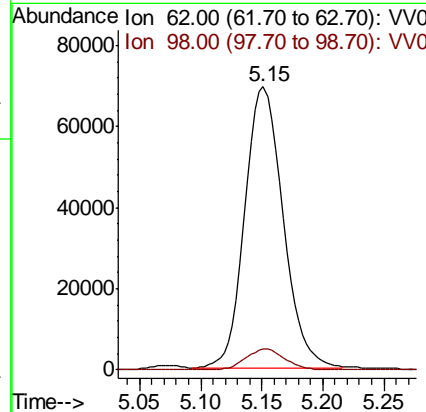
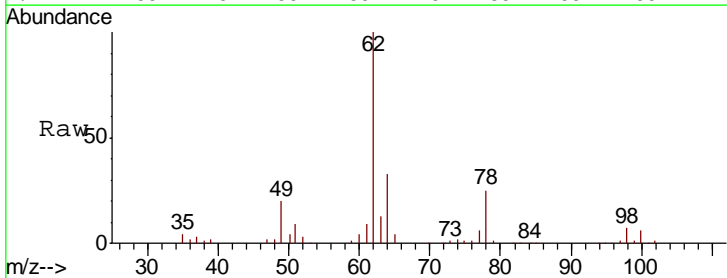
Ion	Ratio	Lower	Upper
83	100		
85	65.8	44.9	83.5

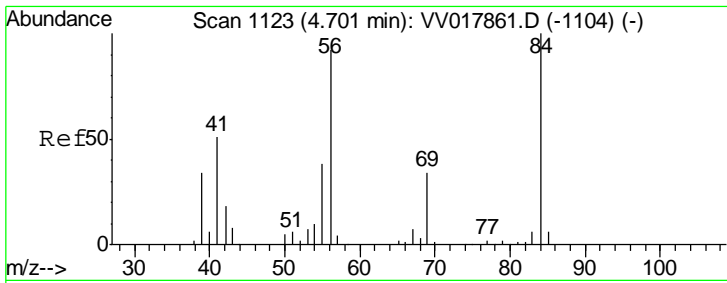


#27  
 1,2-Dichloroethane  
 Concen: 50.655 ug/L  
 RT: 5.15 min Scan# 1263  
 Delta R.T. -0.00 min  
 Lab File: VV017884.D  
 Acq: 10 Aug 2020 09:31

Tgt Ion: 62 Resp: 151154

Ion	Ratio	Lower	Upper
62	100		
98	7.4	6.2	9.4

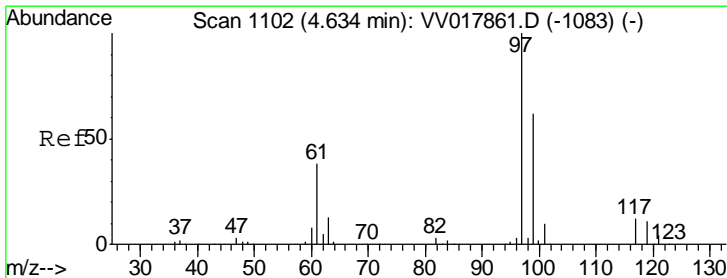
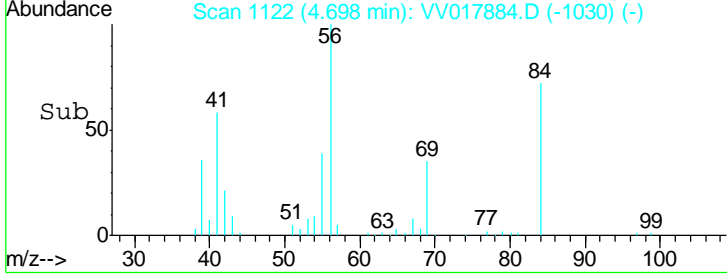
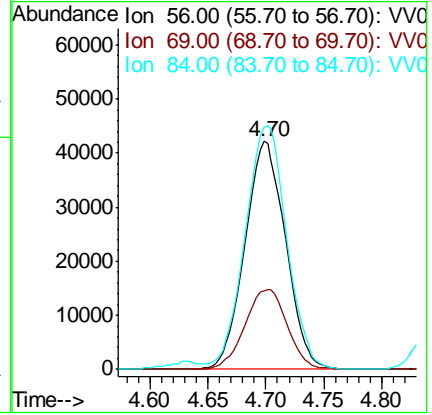
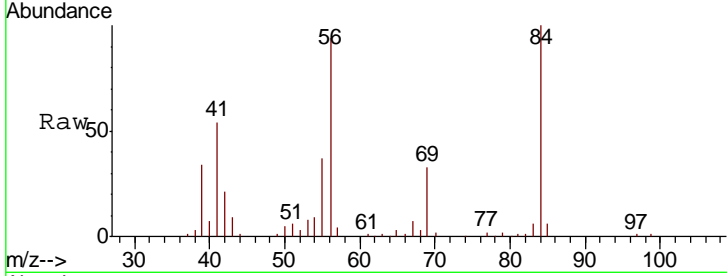




#29  
 Cyclohexane  
 Concen: 51.377 ug/L  
 RT: 4.70 min Scan# 1122  
 Delta R.T. -0.00 min  
 Lab File: VV017884.D  
 Acq: 10 Aug 2020 09:31

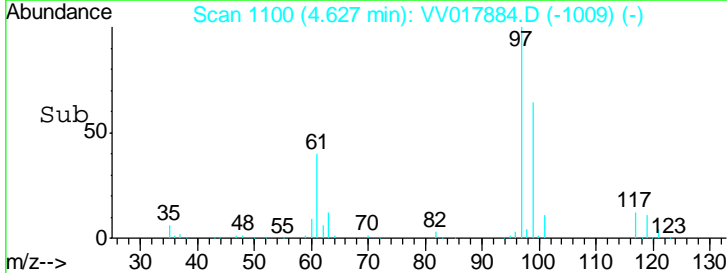
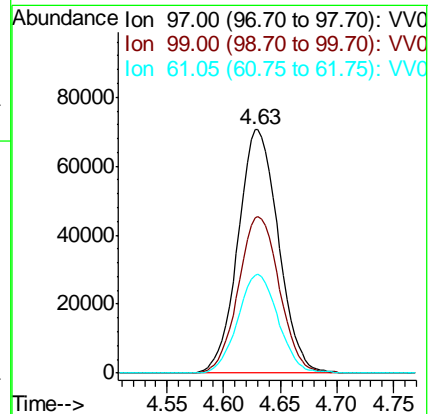
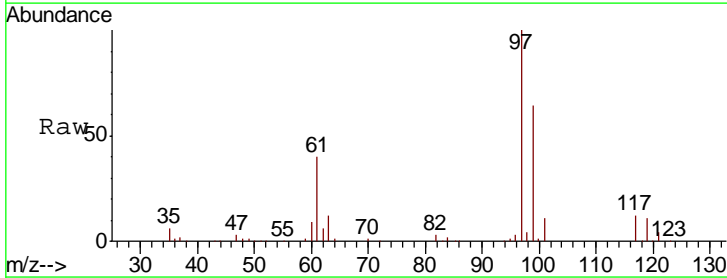
Instrument : MSVOA\_V  
 ClientSampled : VSTD05095

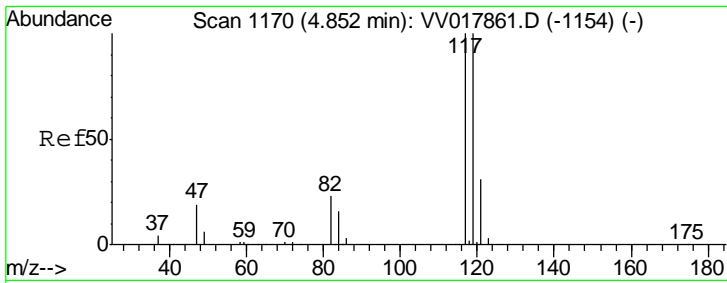
Tgt Ion	Resp	Lower	Upper
56	102829		
69	36.4	29.6	44.4
84	109.8	88.5	132.7



#30  
 1,1,1-Trichloroethane  
 Concen: 49.876 ug/L  
 RT: 4.63 min Scan# 1100  
 Delta R.T. -0.01 min  
 Lab File: VV017884.D  
 Acq: 10 Aug 2020 09:31

Tgt Ion	Resp	Lower	Upper
97	175383		
99	65.1	51.0	76.6
61	40.7	31.5	47.3

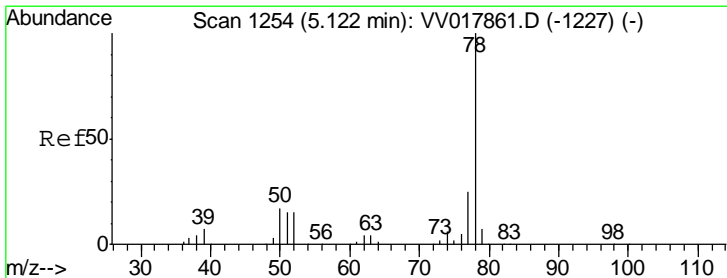
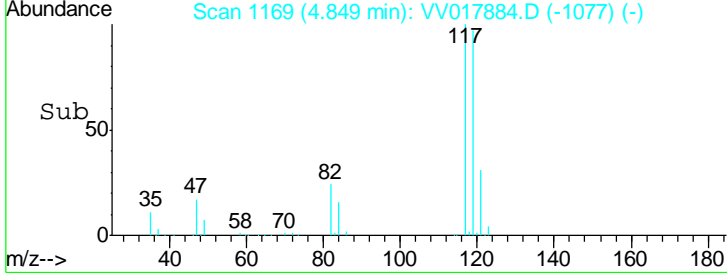
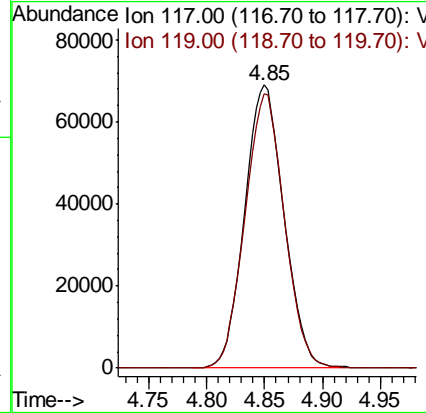
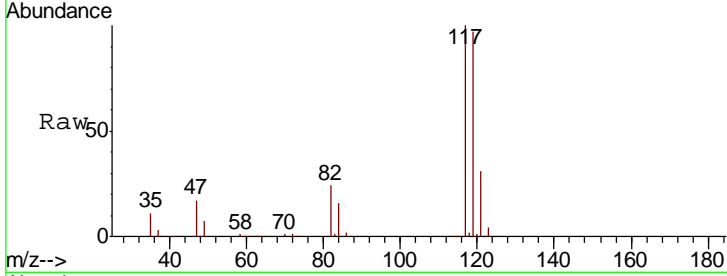




#31  
 Carbon tetrachloride  
 Concen: 51.894 ug/L  
 RT: 4.85 min Scan# 1169  
 Delta R.T. -0.00 min  
 Lab File: VV017884.D  
 Acq: 10 Aug 2020 09:31

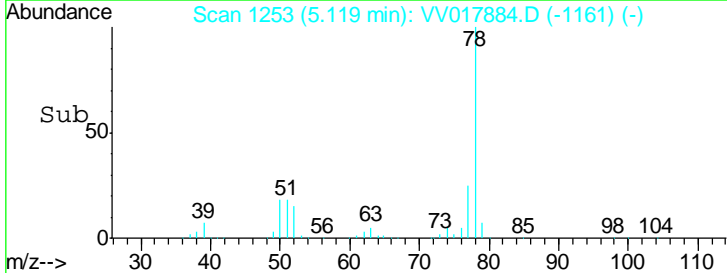
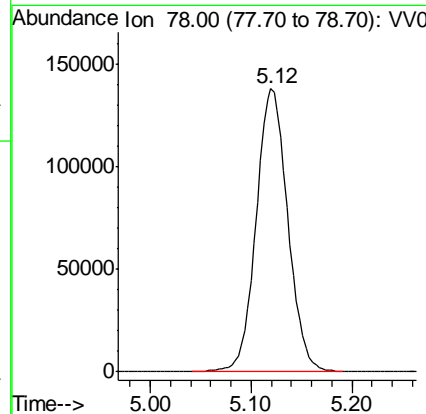
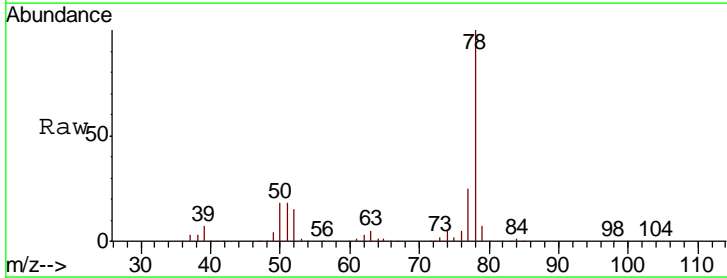
Instrument :  
 MSVOA\_V  
 ClientSampled :  
 VSTD05095

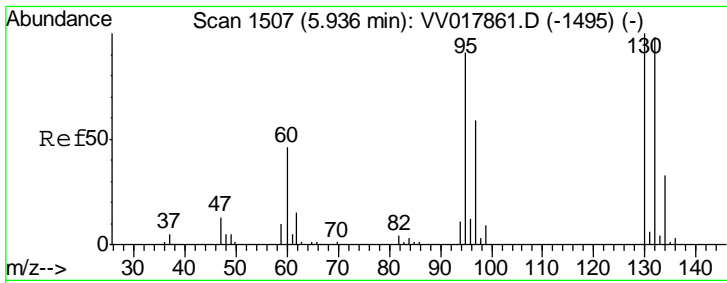
Tgt Ion: 117 Resp: 162887  
 Ion Ratio Lower Upper  
 117 100  
 119 97.2 78.2 117.4



#33  
 Benzene  
 Concen: 50.391 ug/L  
 RT: 5.12 min Scan# 1253  
 Delta R.T. -0.00 min  
 Lab File: VV017884.D  
 Acq: 10 Aug 2020 09:31

Tgt Ion: 78 Resp: 299381

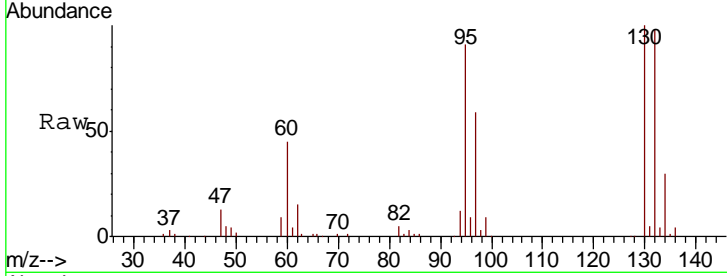




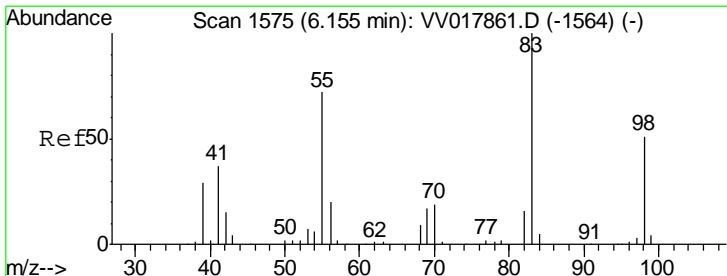
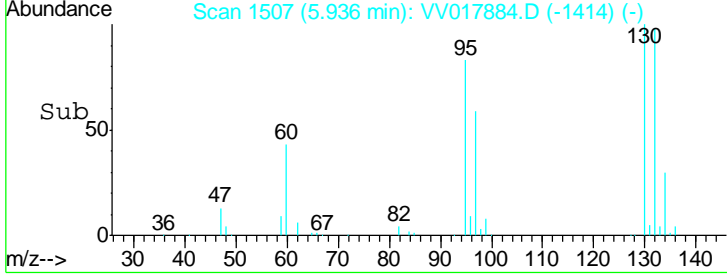
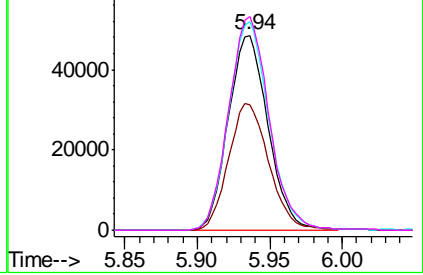
#34  
 Trichloroethene  
 Concen: 51.490 ug/L  
 RT: 5.94 min Scan# 1507  
 Delta R.T. -0.00 min  
 Lab File: VV017884.D  
 Acq: 10 Aug 2020 09:31

Instrument : MSVOA\_V  
 ClientSampled : VSTD05095

Tgt Ion	Resp	Lower	Upper
95	100		
97	64.7	44.7	83.1
132	107.1	73.6	136.8
130	109.6	77.6	144.0

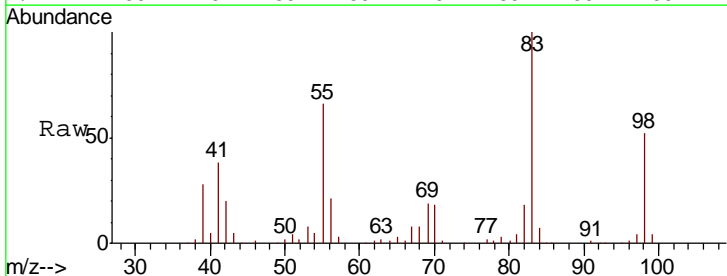


Abundance Ion 95.00 (94.70 to 95.70): VV017884.D (-1414) (-)  
 Ion 97.00 (96.70 to 97.70): VV017884.D (-1414) (-)  
 Ion 132.00 (131.70 to 132.70): VV017884.D (-1414) (-)  
 Ion 130.00 (129.70 to 130.70): VV017884.D (-1414) (-)

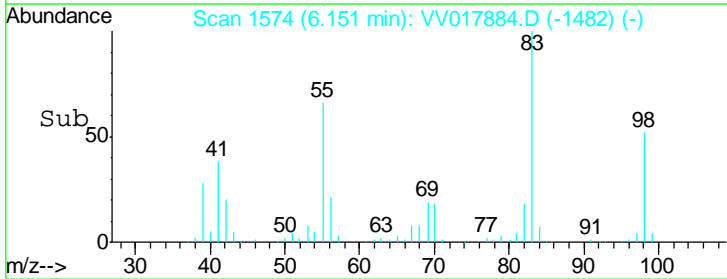
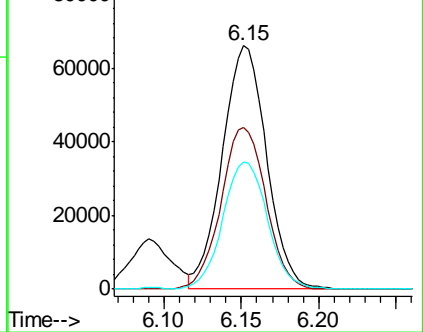


#35  
 Methylcyclohexane  
 Concen: 51.448 ug/L  
 RT: 6.15 min Scan# 1574  
 Delta R.T. -0.00 min  
 Lab File: VV017884.D  
 Acq: 10 Aug 2020 09:31

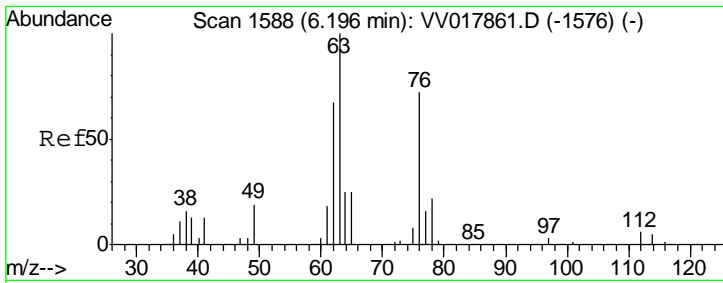
Tgt Ion	Resp	Lower	Upper
83	100		
55	66.9	54.6	82.0
98	52.8	41.1	61.7



Abundance Ion 83.00 (82.70 to 83.70): VV017884.D (-1482) (-)  
 Ion 55.00 (54.70 to 55.70): VV017884.D (-1482) (-)  
 Ion 98.00 (97.70 to 98.70): VV017884.D (-1482) (-)



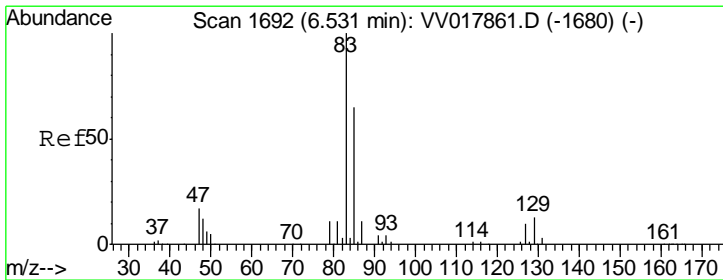
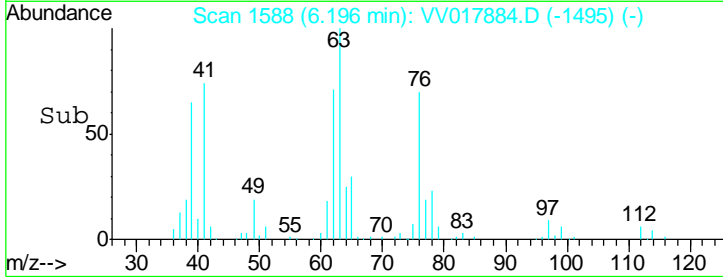
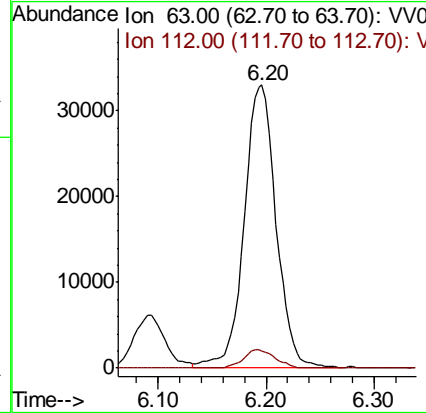
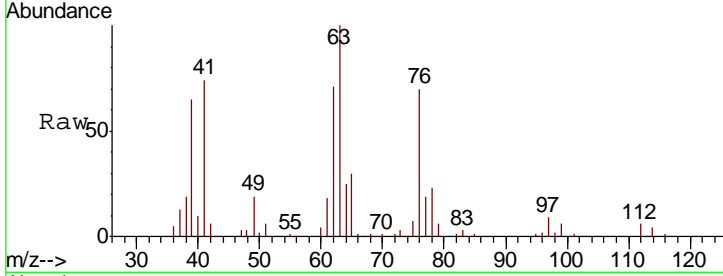




#37  
 1,2-Dichloropropane  
 Concen: 52.493 ug/L  
 RT: 6.20 min Scan# 1588  
 Delta R.T. -0.00 min  
 Lab File: VV017884.D  
 Acq: 10 Aug 2020 09:31

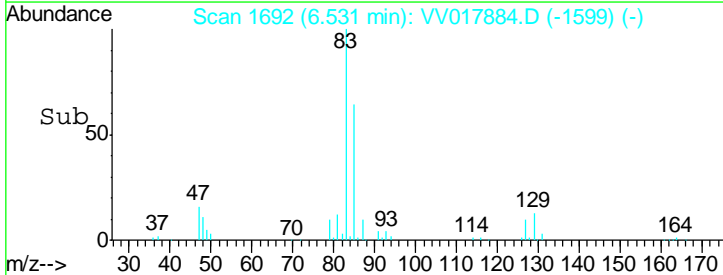
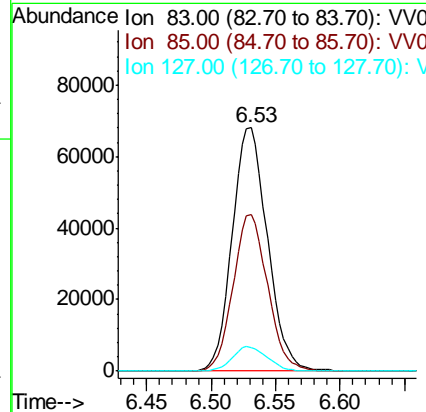
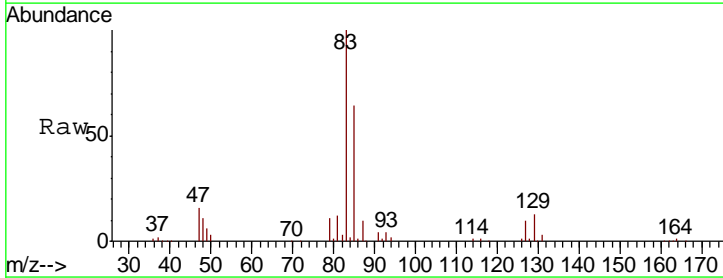
Instrument : MSVOA\_V  
 ClientSampled : VSTD05095

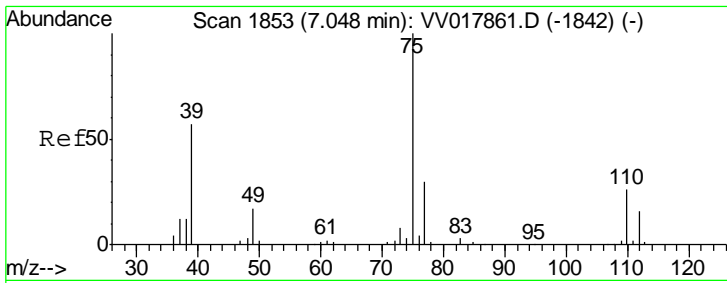
Tgt Ion	Resp	Lower	Upper
63	100		
112	6.4	5.8	8.6



#38  
 Bromodichloromethane  
 Concen: 54.784 ug/L  
 RT: 6.53 min Scan# 1692  
 Delta R.T. -0.00 min  
 Lab File: VV017884.D  
 Acq: 10 Aug 2020 09:31

Tgt Ion	Resp	Lower	Upper
83	100		
85	64.2	45.4	84.2
127	9.9	7.8	11.8

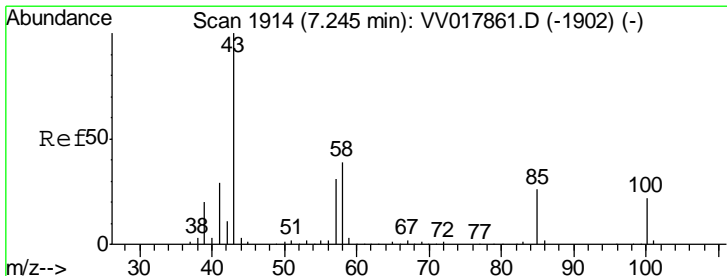
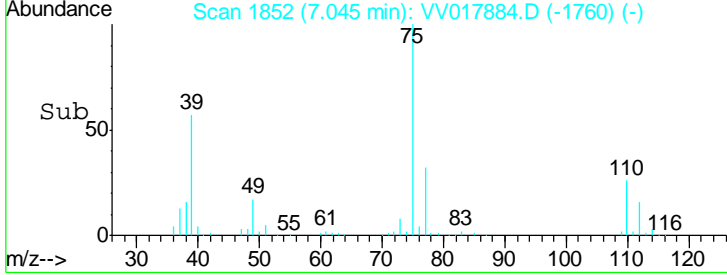
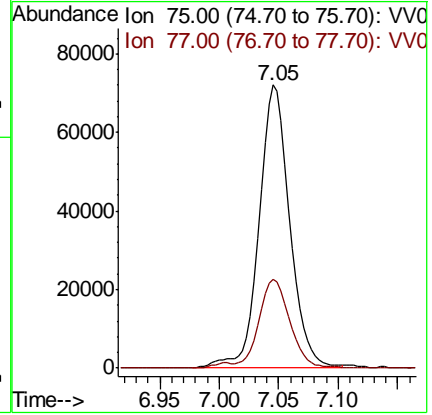
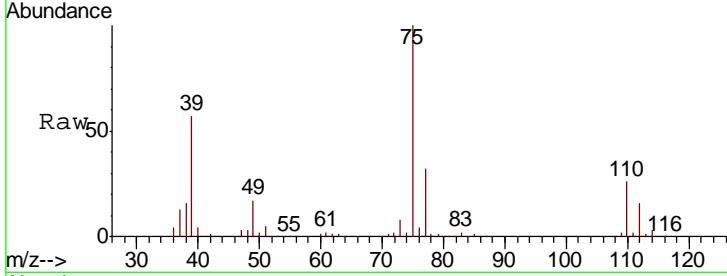




#39  
 cis-1,3-Dichloropropene  
 Concen: 57.566 ug/L  
 RT: 7.05 min Scan# 1852  
 Delta R.T. -0.00 min  
 Lab File: VV017884.D  
 Acq: 10 Aug 2020 09:31

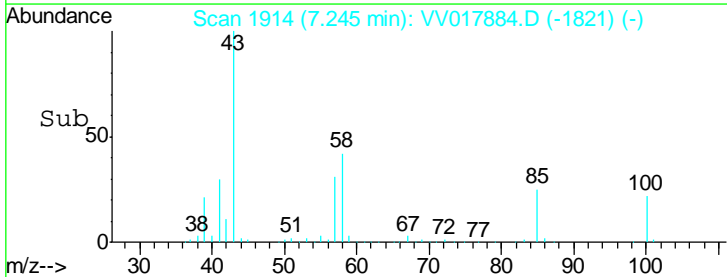
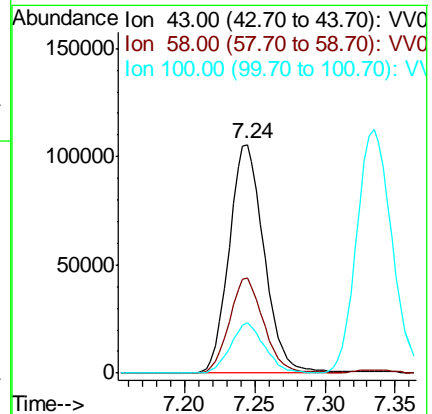
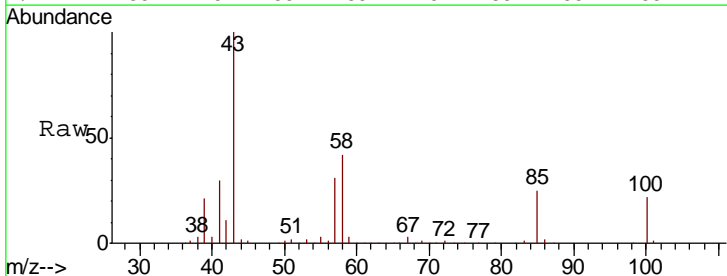
Instrument : MSVOA\_V  
 ClientSampled : VSTD05095

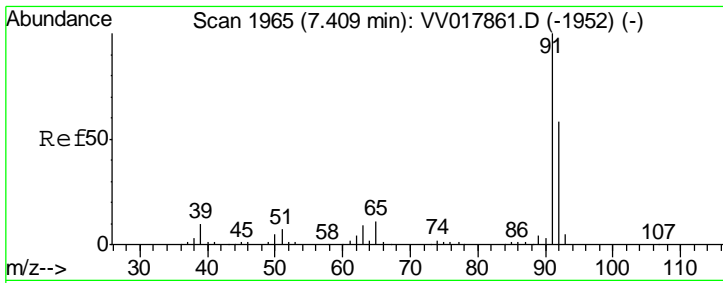
Tgt Ion	Resp	Lower	Upper
75	128631		
77	31.6	23.7	44.1



#40  
 4-Methyl-2-pentanone  
 Concen: 107.937 ug/L  
 RT: 7.24 min Scan# 1914  
 Delta R.T. -0.00 min  
 Lab File: VV017884.D  
 Acq: 10 Aug 2020 09:31

Tgt Ion	Resp	Lower	Upper
43	182959		
58	40.7	32.3	48.5
100	21.4	17.4	26.0

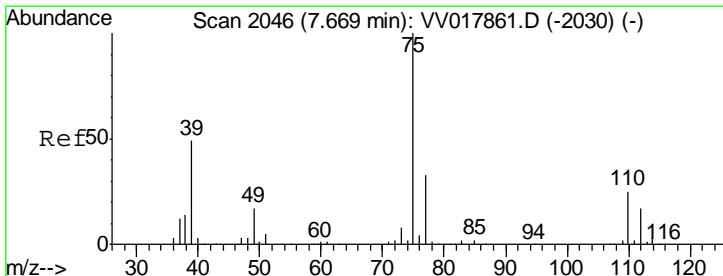
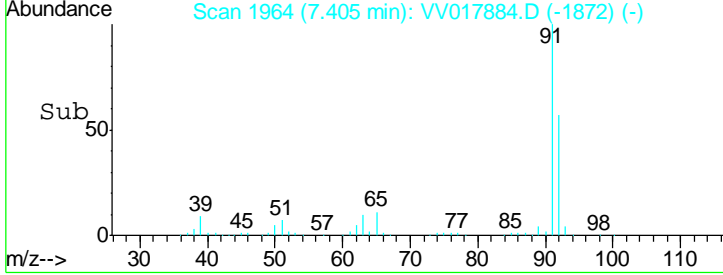
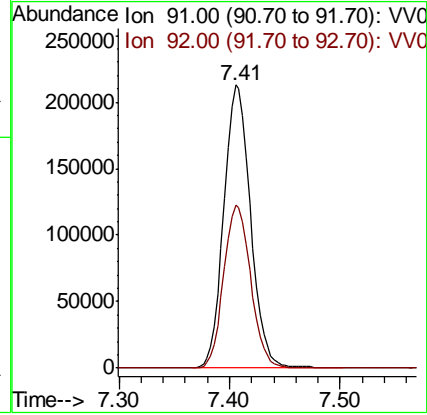
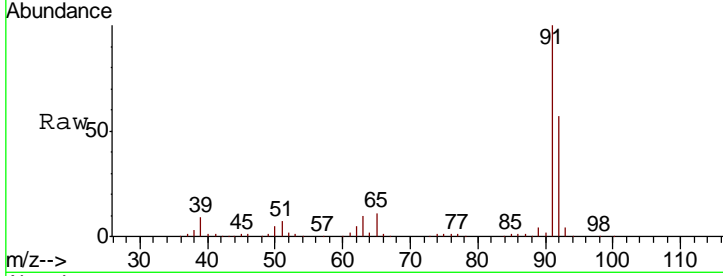




#42  
 Toluene  
 Concen: 51.713 ug/L  
 RT: 7.41 min Scan# 1964  
 Delta R.T. -0.00 min  
 Lab File: VV017884.D  
 Acq: 10 Aug 2020 09:31

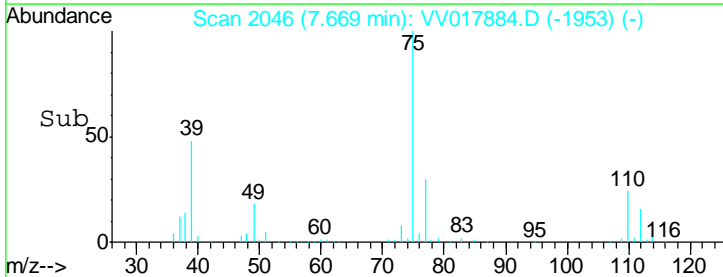
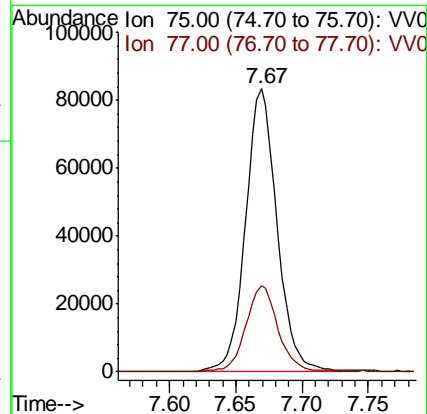
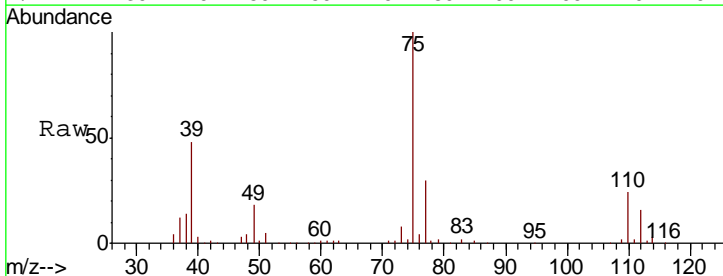
Instrument :  
 MSVOA\_V  
 ClientSampled :  
 VSTD05095

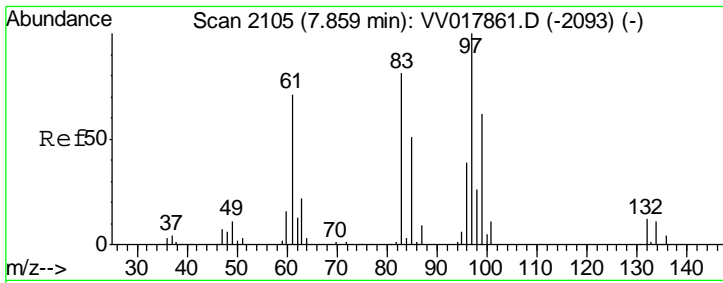
Tgt Ion: 91 Resp: 358091  
 Ion Ratio Lower Upper  
 91 100  
 92 57.4 41.4 77.0



#44  
 trans-1,3-Dichloropropene  
 Concen: 58.650 ug/L  
 RT: 7.67 min Scan# 2046  
 Delta R.T. -0.00 min  
 Lab File: VV017884.D  
 Acq: 10 Aug 2020 09:31

Tgt Ion: 75 Resp: 137735  
 Ion Ratio Lower Upper  
 75 100  
 77 30.3 22.3 41.5

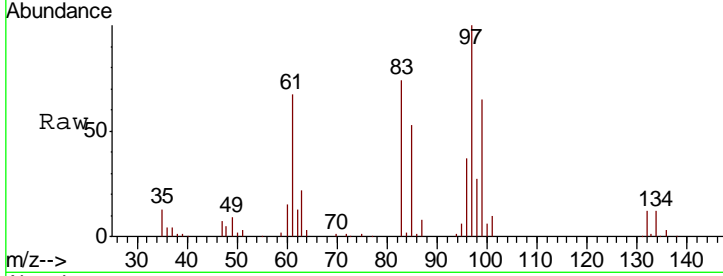




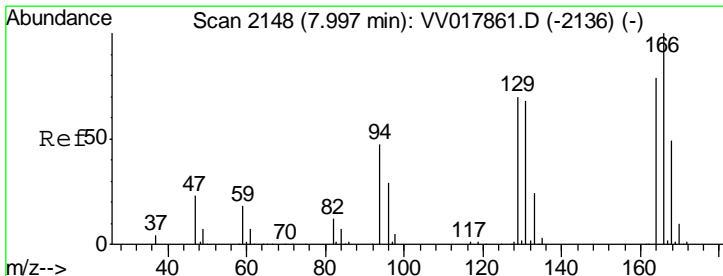
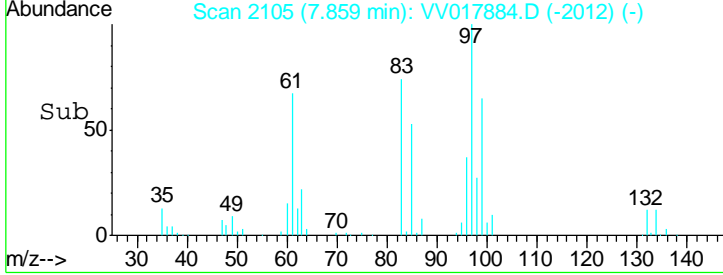
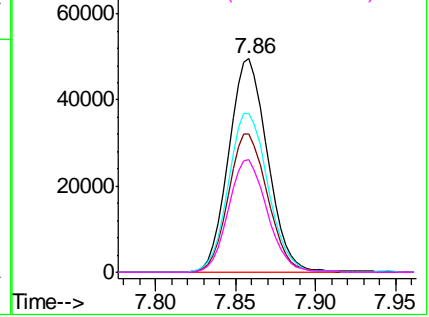
#45  
 1,1,2-Trichloroethane  
 Concen: 50.274 ug/L  
 RT: 7.86 min Scan# 2105  
 Delta R.T. -0.00 min  
 Lab File: VV017884.D  
 Acq: 10 Aug 2020 09:31

Instrument :  
 MSVOA\_V  
 ClientSampled :  
 VSTD05095

Tgt Ion	Resp	Lower	Upper
97	100		
99	64.7	44.7	82.9
83	74.2	55.7	103.5
85	52.5	35.4	65.8

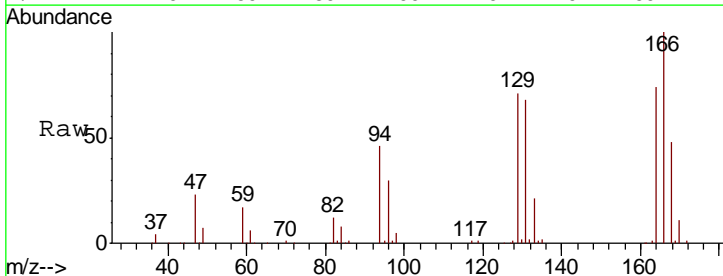


Abundance Ion 97.00 (96.70 to 97.70): VV017884.D (-2012) (-)  
 Ion 99.00 (98.70 to 99.70): VV017884.D (-2055) (-)  
 Ion 83.00 (82.70 to 83.70): VV017884.D (-2093) (-)  
 Ion 85.00 (84.70 to 85.70): VV017884.D (-2136) (-)

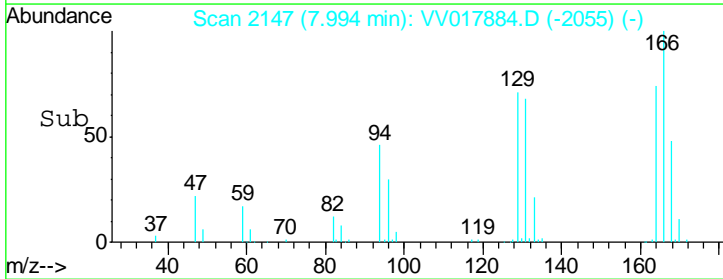
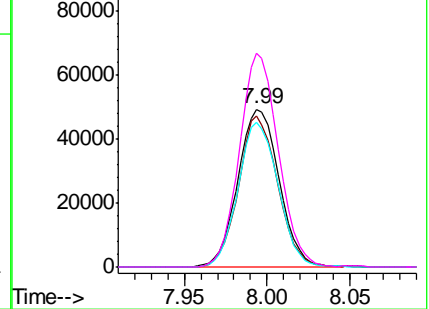


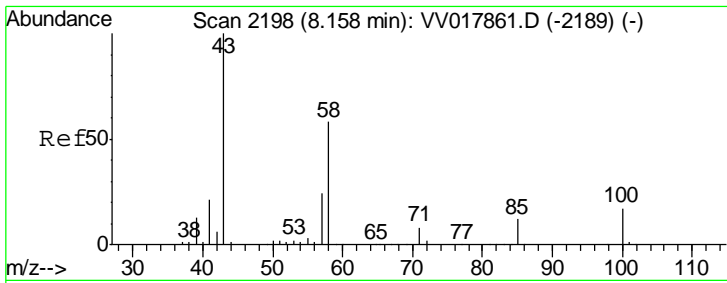
#46  
 Tetrachloroethene  
 Concen: 50.460 ug/L  
 RT: 7.99 min Scan# 2147  
 Delta R.T. -0.00 min  
 Lab File: VV017884.D  
 Acq: 10 Aug 2020 09:31

Tgt Ion	Resp	Lower	Upper
164	100		
129	95.7	61.6	114.4
131	91.6	59.6	110.8
166	135.6	87.2	161.9



Abundance Ion 164.00 (163.70 to 164.70): VV017884.D (-2055) (-)  
 Ion 129.00 (128.70 to 129.70): VV017884.D (-2093) (-)  
 Ion 131.00 (130.70 to 131.70): VV017884.D (-2136) (-)  
 Ion 166.00 (165.70 to 166.70): VV017884.D (-2179) (-)

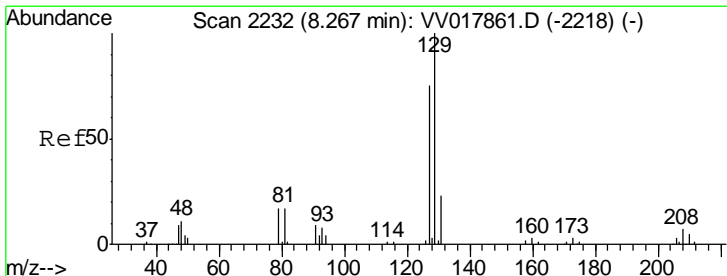
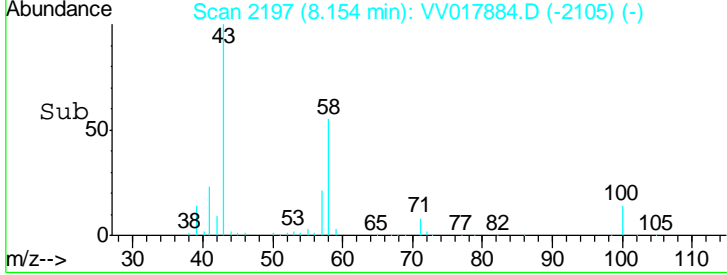
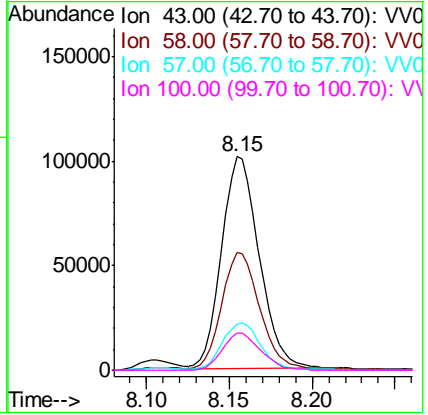
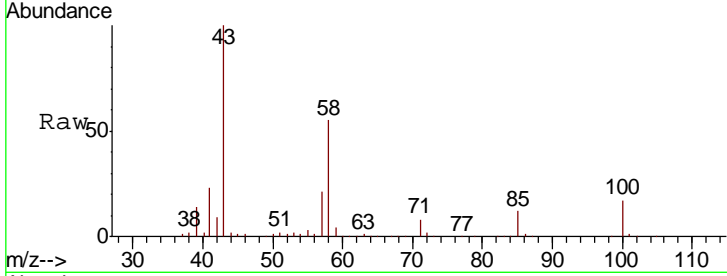




#48  
 2-Hexanone  
 Concen: 113.564 ug/L  
 RT: 8.15 min Scan# 2197  
 Delta R.T. -0.00 min  
 Lab File: VV017884.D  
 Acq: 10 Aug 2020 09:31

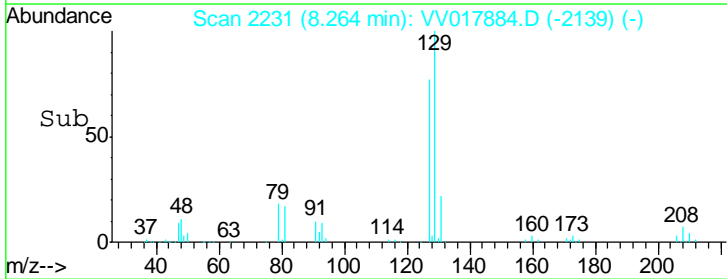
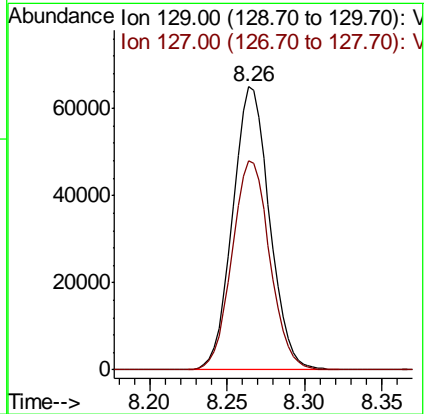
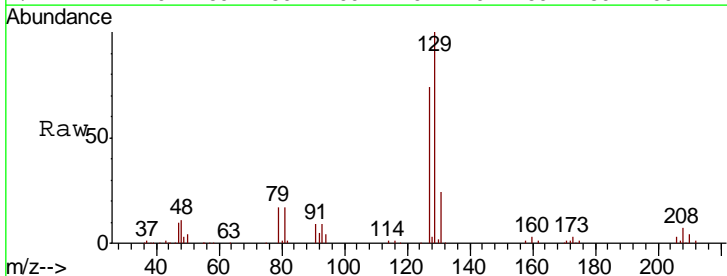
Instrument : MSVOA\_V  
 ClientSampleId : VSTD05095

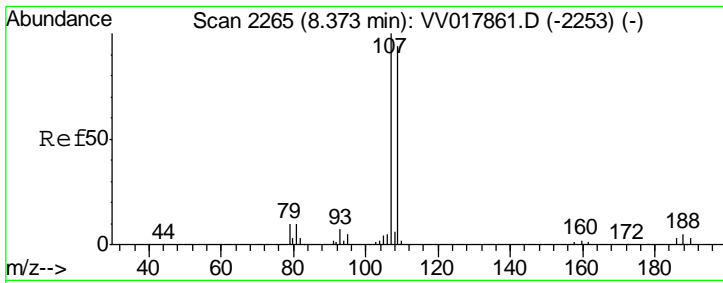
Tgt Ion	Resp	Lower	Upper
43	161162		
58	54.9	43.8	65.8
57	23.1	18.0	27.0
100	18.0	13.8	20.8



#49  
 Dibromochloromethane  
 Concen: 59.146 ug/L  
 RT: 8.26 min Scan# 2231  
 Delta R.T. -0.00 min  
 Lab File: VV017884.D  
 Acq: 10 Aug 2020 09:31

Tgt Ion	Resp	Lower	Upper
129	107626		
127	73.9	53.1	98.5

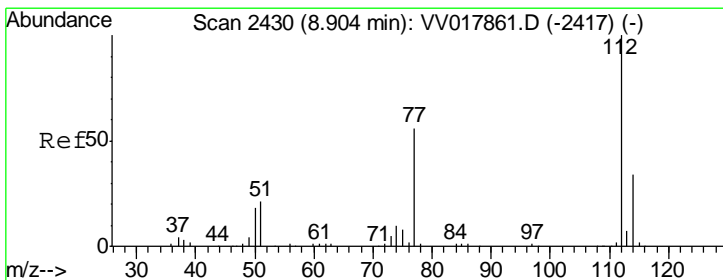
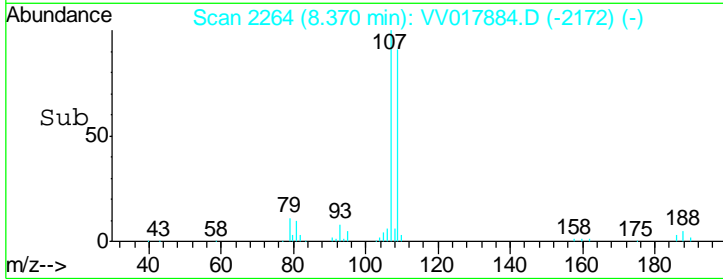
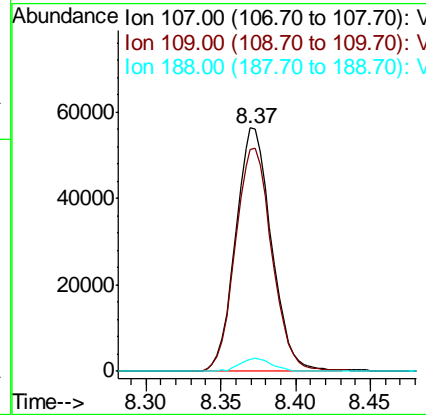
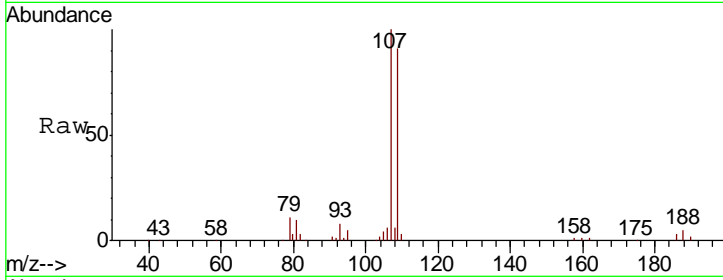




#50  
 1,2-Dibromoethane  
 Concen: 52.105 ug/L  
 RT: 8.37 min Scan# 2264  
 Delta R.T. -0.00 min  
 Lab File: VV017884.D  
 Acq: 10 Aug 2020 09:31

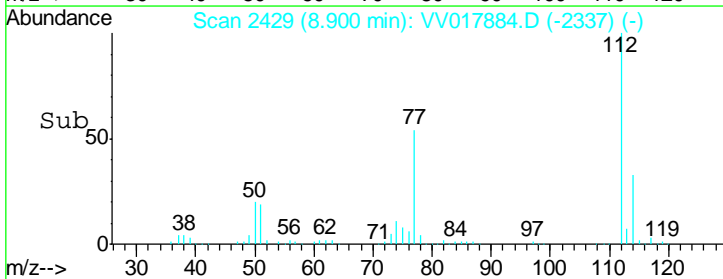
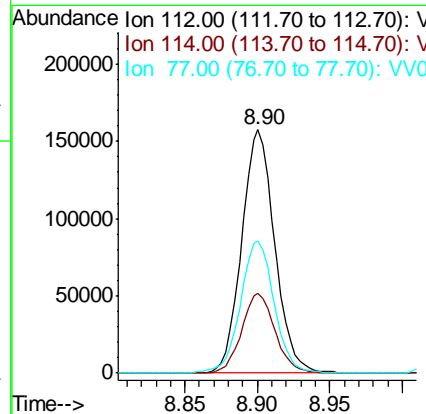
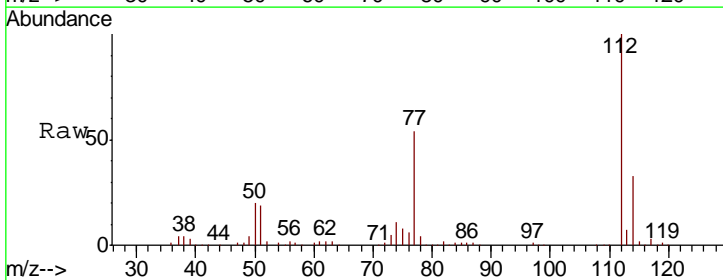
Instrument : MSVOA\_V  
 ClientSampled : VSTD05095

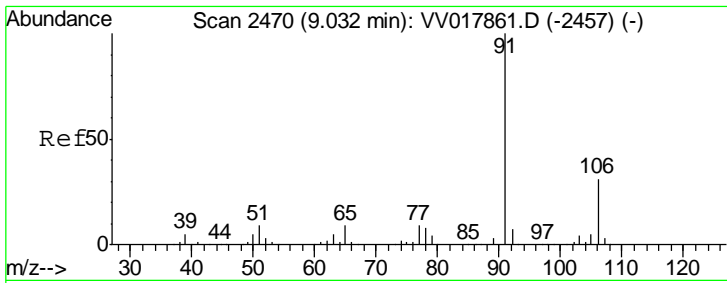
Tgt Ion	Resp	Lower	Upper
107	93896		
109	91.2	67.3	125.1
188	5.0	4.3	6.5



#51  
 Chlorobenzene  
 Concen: 51.684 ug/L  
 RT: 8.90 min Scan# 2429  
 Delta R.T. -0.00 min  
 Lab File: VV017884.D  
 Acq: 10 Aug 2020 09:31

Tgt Ion	Resp	Lower	Upper
112	248981		
114	32.9	22.4	41.6
77	54.4	42.7	64.1

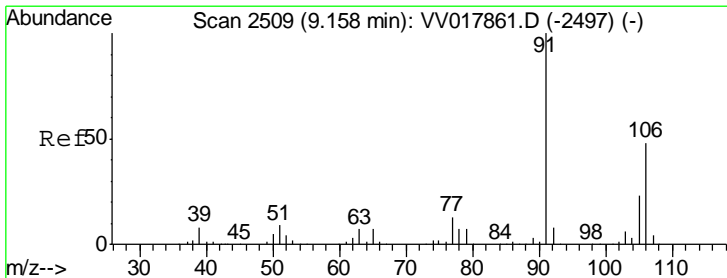
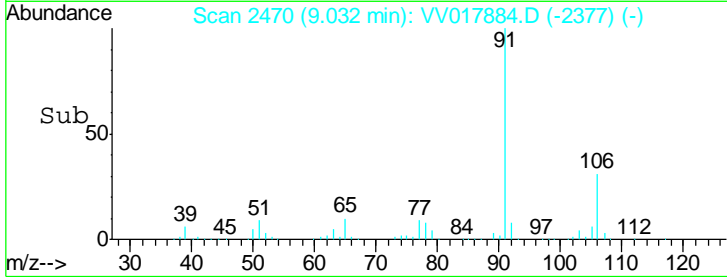
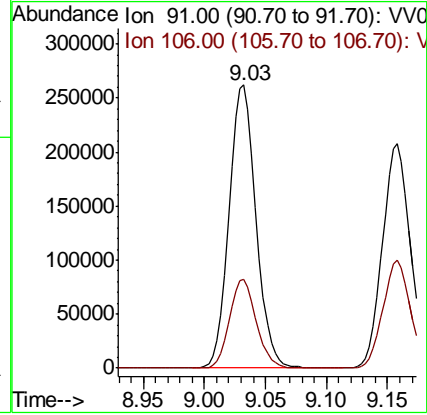
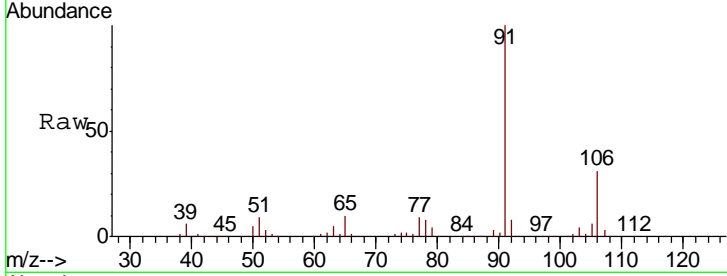




#52  
Ethylbenzene  
Concen: 51.046 ug/L  
RT: 9.03 min Scan# 2470  
Delta R.T. -0.00 min  
Lab File: VV017884.D  
Acq: 10 Aug 2020 09:31

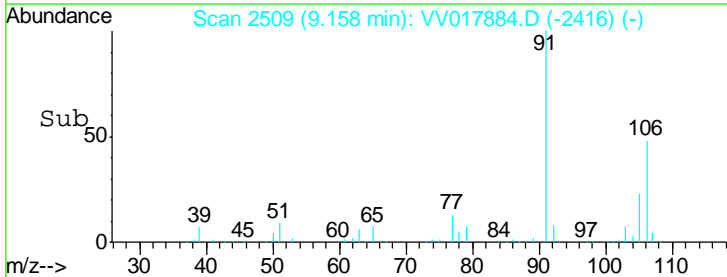
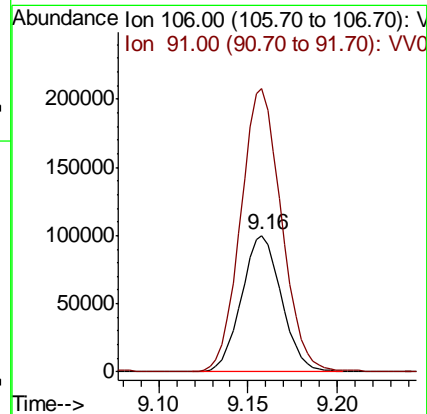
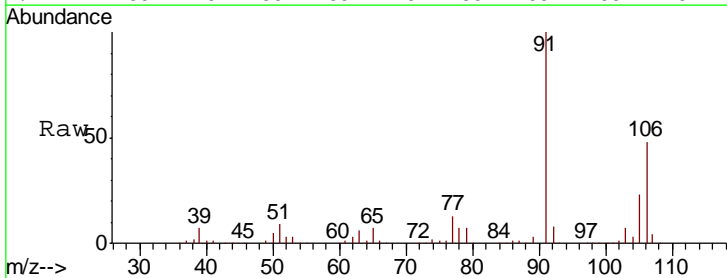
Instrument :  
MSVOA\_V  
ClientSampled :  
VSTD05095

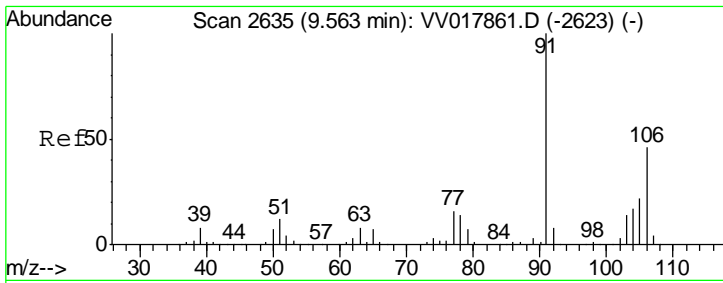
Tgt Ion: 91 Resp: 406145  
Ion Ratio Lower Upper  
91 100  
106 31.4 22.4 41.6



#53  
m,p-Xylene  
Concen: 50.234 ug/L  
RT: 9.16 min Scan# 2509  
Delta R.T. -0.00 min  
Lab File: VV017884.D  
Acq: 10 Aug 2020 09:31

Tgt Ion: 106 Resp: 155361  
Ion Ratio Lower Upper  
106 100  
91 207.8 146.4 272.0

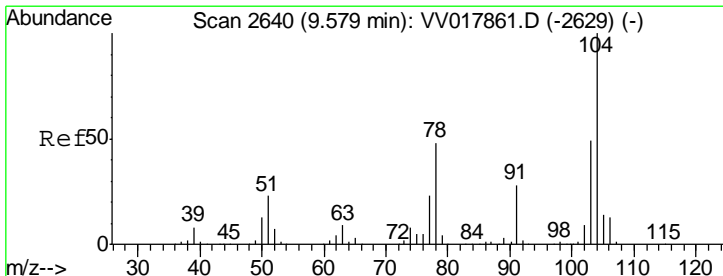
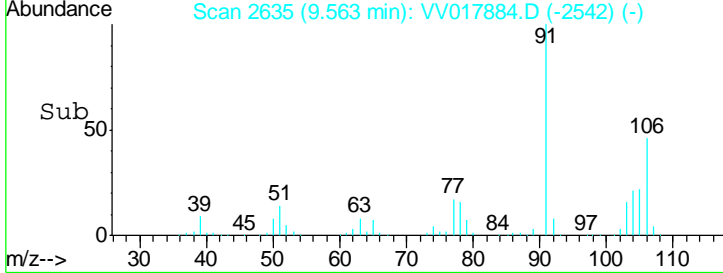
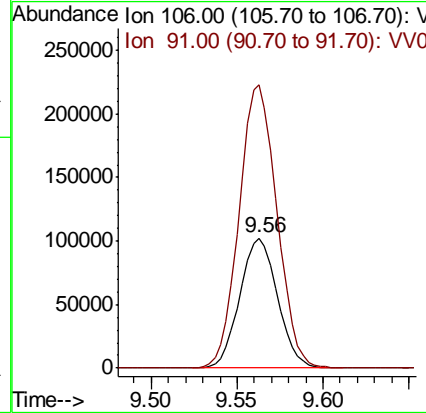
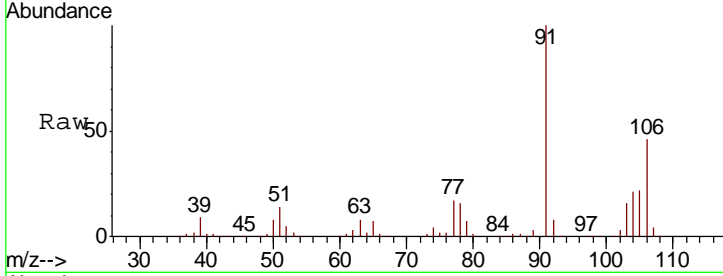




#54  
 o-xylene  
 Concen: 51.251 ug/L  
 RT: 9.56 min Scan# 2635  
 Delta R.T. -0.00 min  
 Lab File: VV017884.D  
 Acq: 10 Aug 2020 09:31

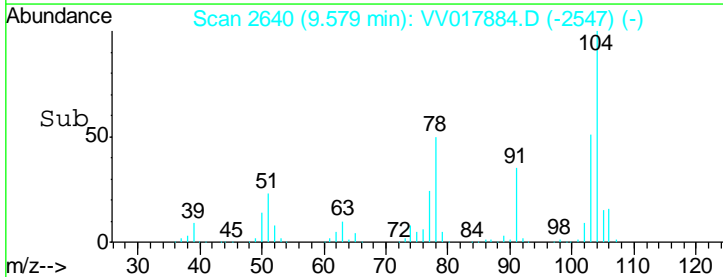
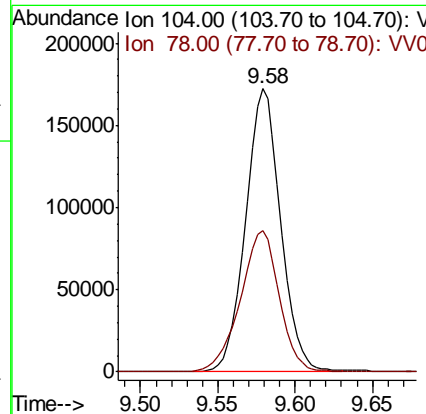
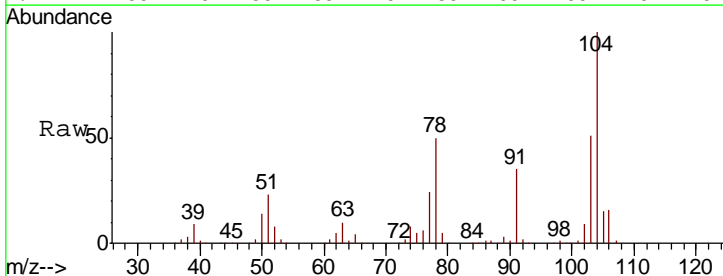
Instrument : MSVOA\_V  
 ClientSampled : VSTD05095

Tgt Ion:106 Resp: 155665  
 Ion Ratio Lower Upper  
 106 100  
 91 217.9 155.2 288.2

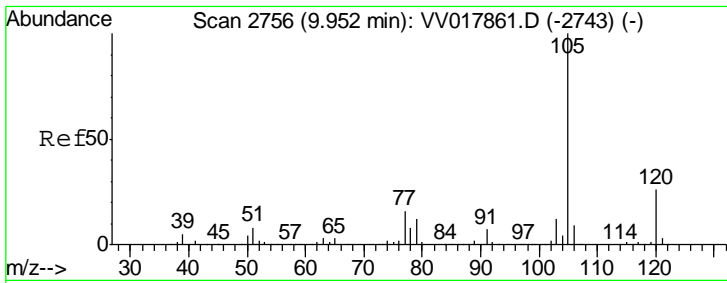


#55  
 Styrene  
 Concen: 52.178 ug/L  
 RT: 9.58 min Scan# 2640  
 Delta R.T. -0.00 min  
 Lab File: VV017884.D  
 Acq: 10 Aug 2020 09:31

Tgt Ion:104 Resp: 271765  
 Ion Ratio Lower Upper  
 104 100  
 78 49.7 35.4 65.7



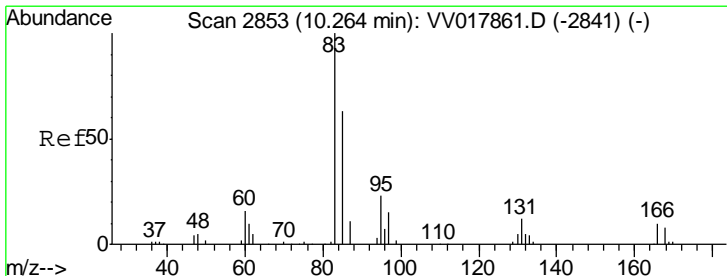
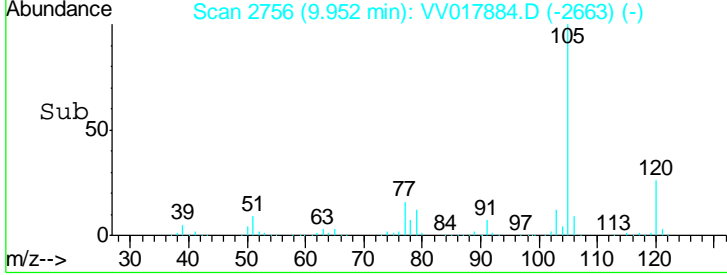
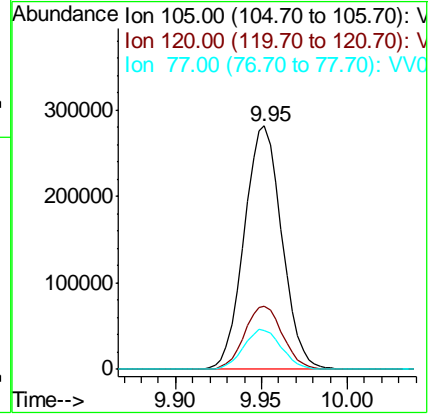
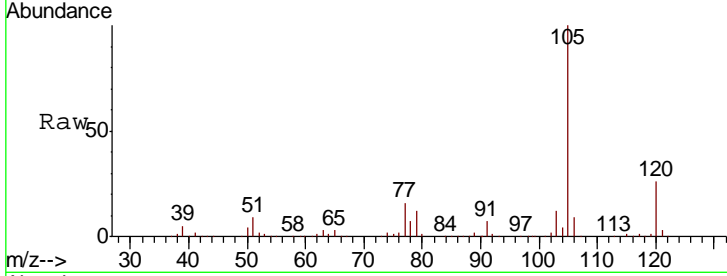




#56  
 Isopropylbenzene  
 Concen: 51.121 ug/L  
 RT: 9.95 min Scan# 2756  
 Delta R.T. -0.00 min  
 Lab File: VV017884.D  
 Acq: 10 Aug 2020 09:31

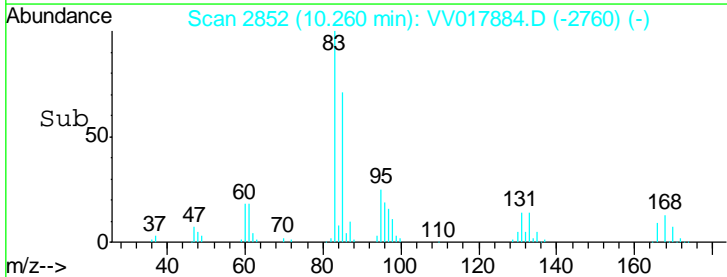
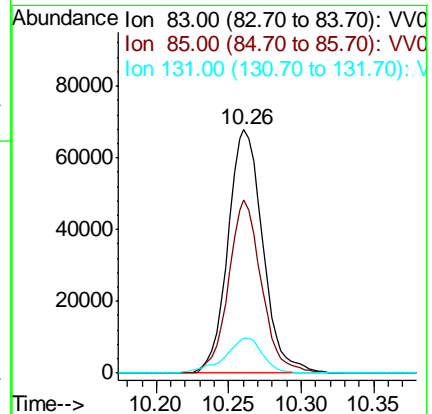
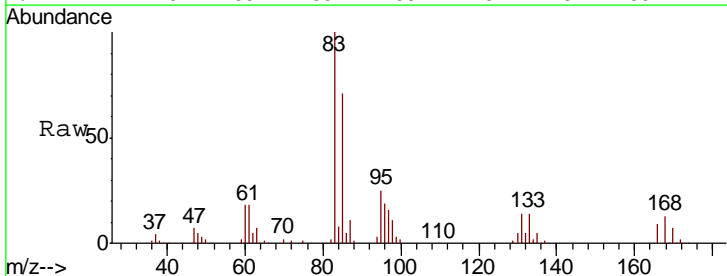
Instrument : MSVOA\_V  
 ClientSampleID : VSTD05095

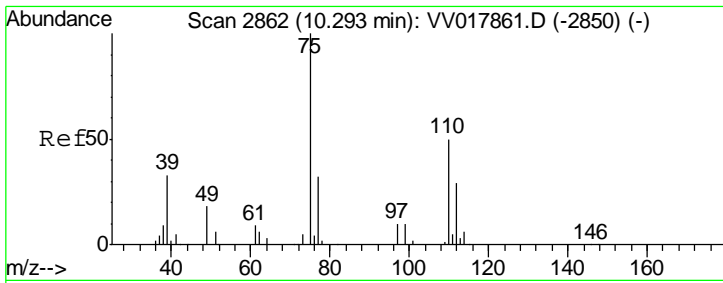
Tgt Ion	Resp	Lower	Upper
105	429155		
120	26.3	21.0	31.4
77	16.5	13.0	19.4



#58  
 1,1,2,2-Tetrachloroethane  
 Concen: 51.361 ug/L  
 RT: 10.26 min Scan# 2852  
 Delta R.T. -0.00 min  
 Lab File: VV017884.D  
 Acq: 10 Aug 2020 09:31

Tgt Ion	Resp	Lower	Upper
83	113101		
85	71.1	47.5	88.1
131	14.2	11.1	16.7

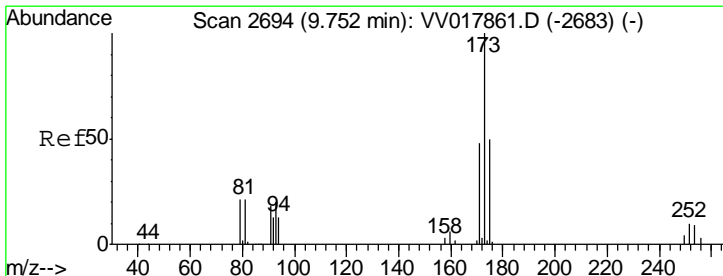
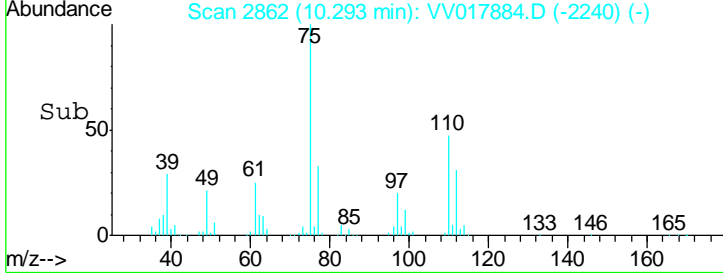
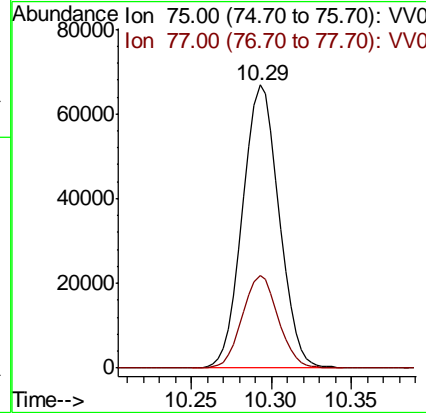
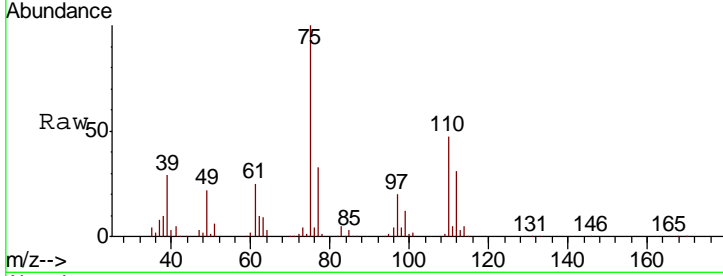




#59  
 1,2,3-Trichloropropane  
 Concen: 51.916 ug/L  
 RT: 10.29 min Scan# 2862  
 Delta R.T. -0.00 min  
 Lab File: VV017884.D  
 Acq: 10 Aug 2020 09:31

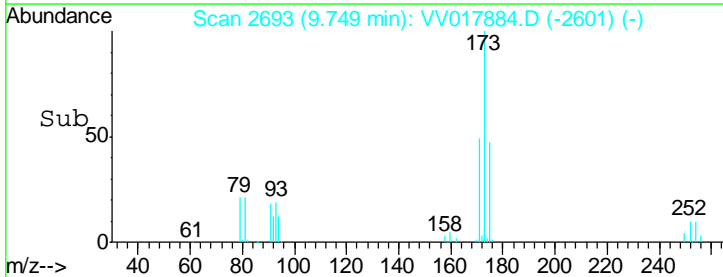
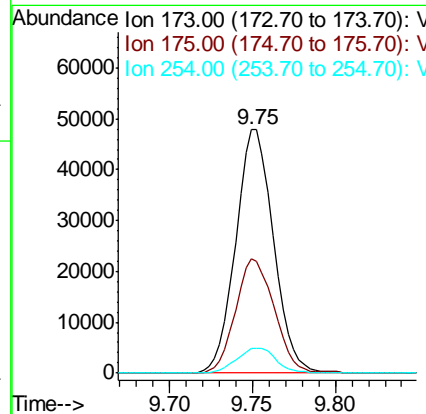
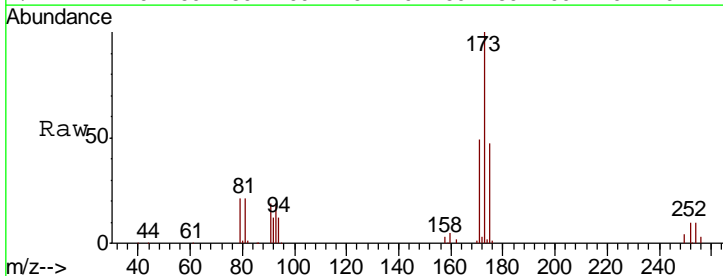
Instrument :  
 MSVOA\_V  
 ClientSampled :  
 VSTD05095

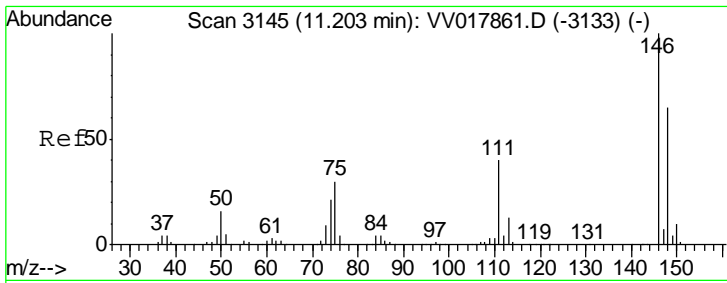
Tgt Ion: 75 Resp: 103871  
 Ion Ratio Lower Upper  
 75 100  
 77 32.2 26.4 39.6



#61  
 Bromoform  
 Concen: 60.901 ug/L  
 RT: 9.75 min Scan# 2693  
 Delta R.T. -0.00 min  
 Lab File: VV017884.D  
 Acq: 10 Aug 2020 09:31

Tgt Ion: 173 Resp: 75911  
 Ion Ratio Lower Upper  
 173 100  
 175 47.9 40.6 60.8  
 254 10.5 8.2 12.2

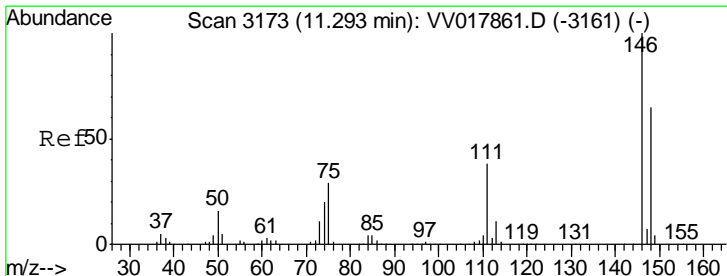
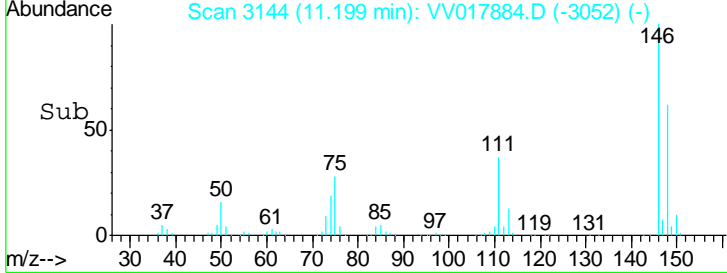
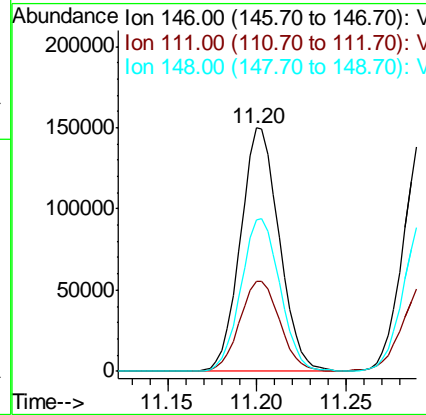
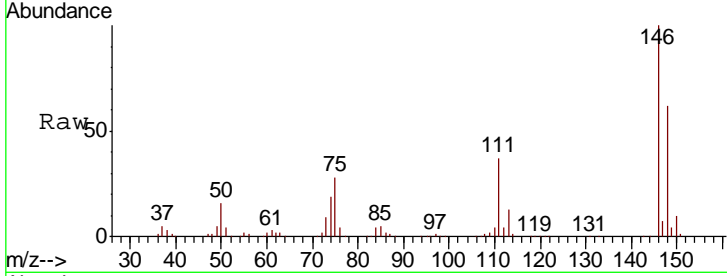




#62  
 1,3-Dichlorobenzene  
 Concen: 51.206 ug/L  
 RT: 11.20 min Scan# 3144  
 Delta R.T. -0.00 min  
 Lab File: VV017884.D  
 Acq: 10 Aug 2020 09:31

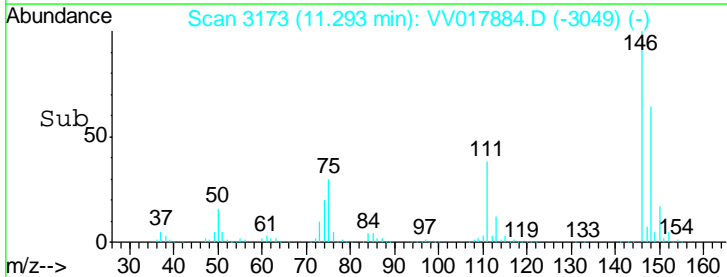
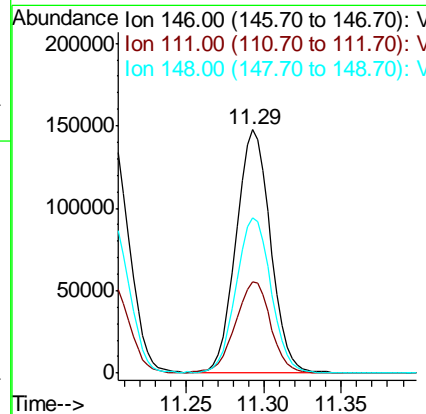
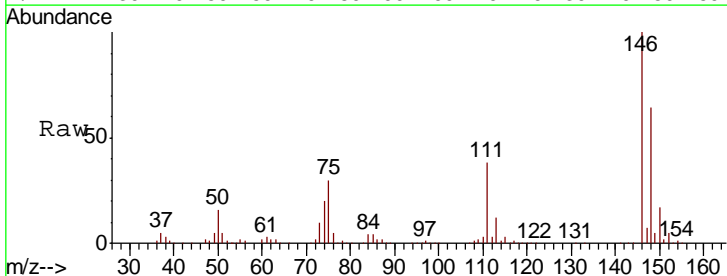
Instrument :  
 MSVOA\_V  
 ClientSampled :  
 VSTD05095

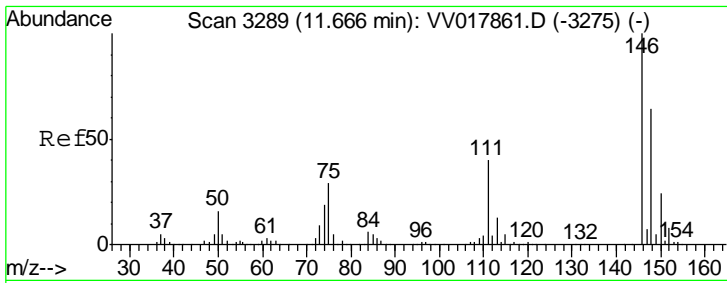
Tgt Ion	Resp	Lower	Upper
146	100		
111	37.0	27.1	50.3
148	62.3	43.8	81.4



#63  
 1,4-Dichlorobenzene  
 Concen: 50.375 ug/L  
 RT: 11.29 min Scan# 3173  
 Delta R.T. -0.00 min  
 Lab File: VV017884.D  
 Acq: 10 Aug 2020 09:31

Tgt Ion	Resp	Lower	Upper
146	100		
111	37.5	26.2	48.8
148	63.9	44.3	82.3

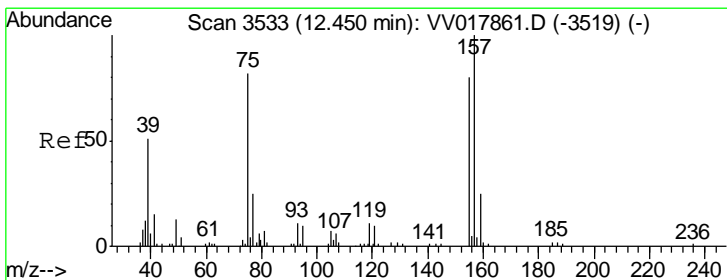
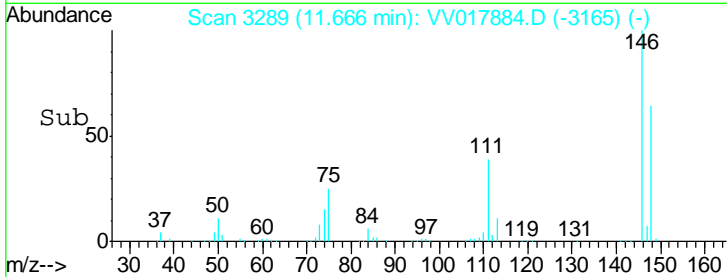
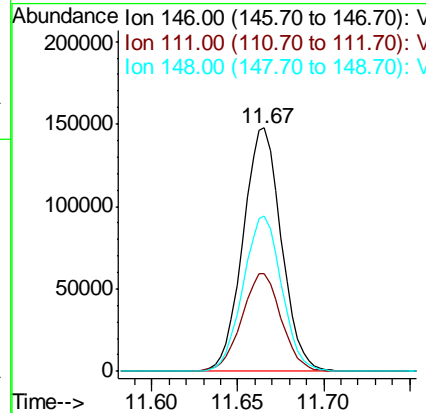
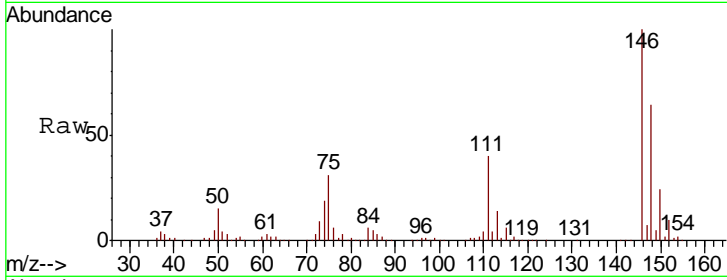




#65  
 1,2-Dichlorobenzene  
 Concen: 50.477 ug/L  
 RT: 11.67 min Scan# 3289  
 Delta R.T. -0.00 min  
 Lab File: VV017884.D  
 Acq: 10 Aug 2020 09:31

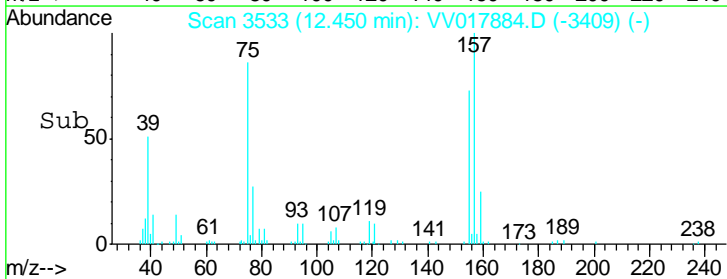
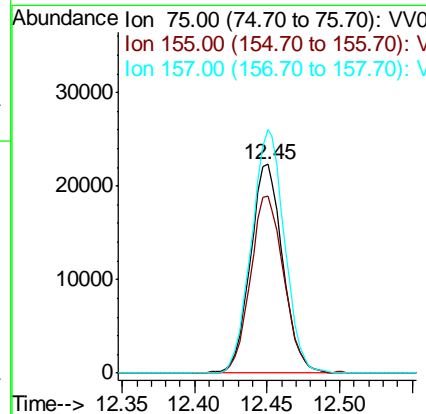
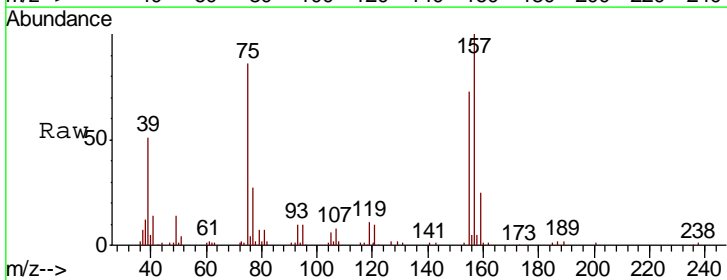
Instrument :  
 MSVOA\_V  
 ClientSampled :  
 VSTD05095

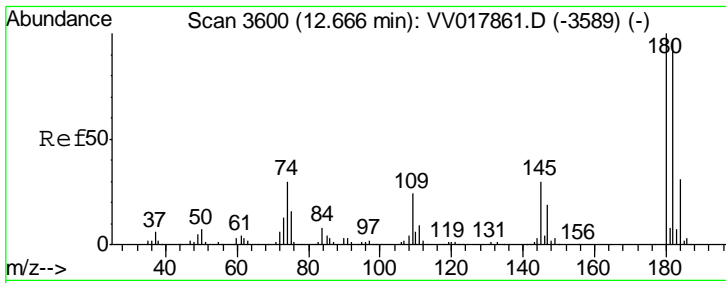
Tgt Ion	Resp	Lower	Upper
146	227737		
111	40.2	32.9	49.3
148	63.8	51.9	77.9



#66  
 1,2-Dibromo-3-chloropropane  
 Concen: 58.914 ug/L  
 RT: 12.45 min Scan# 3533  
 Delta R.T. -0.00 min  
 Lab File: VV017884.D  
 Acq: 10 Aug 2020 09:31

Tgt Ion	Resp	Lower	Upper
75	34790		
155	85.1	75.0	112.6
157	116.6	95.0	142.4

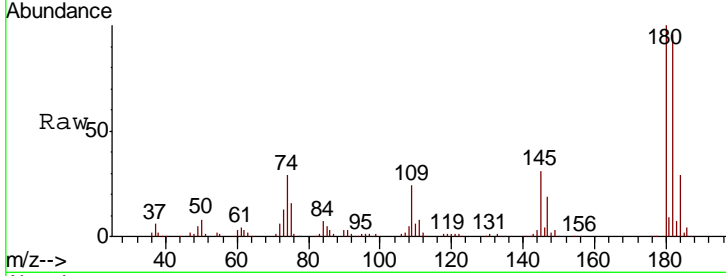




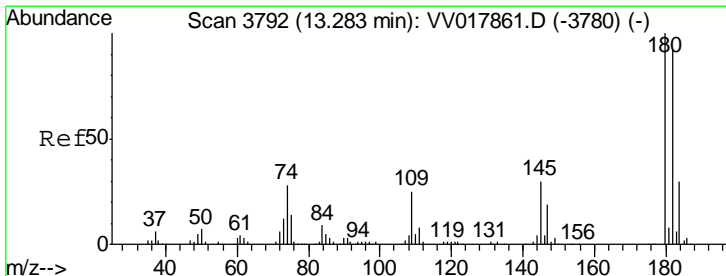
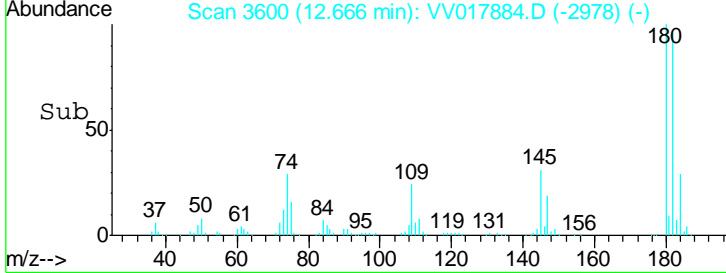
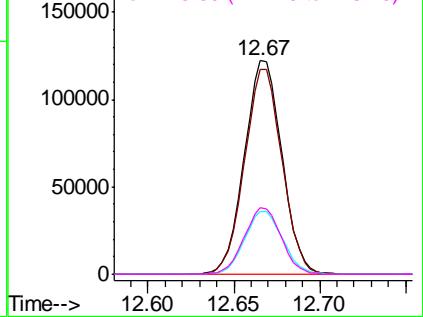
#67  
 1,3,5-Trichlorobenzene  
 Concen: 51.301 ug/L  
 RT: 12.67 min Scan# 3600  
 Delta R.T. -0.00 min  
 Lab File: VV017884.D  
 Acq: 10 Aug 2020 09:31

Instrument : MSVOA\_V  
 ClientSampled : VSTD05095

Tgt Ion	Resp	Lower	Upper
180	184896		
182	95.8	76.7	115.1
184	30.2	24.4	36.6
145	30.8	24.2	36.4

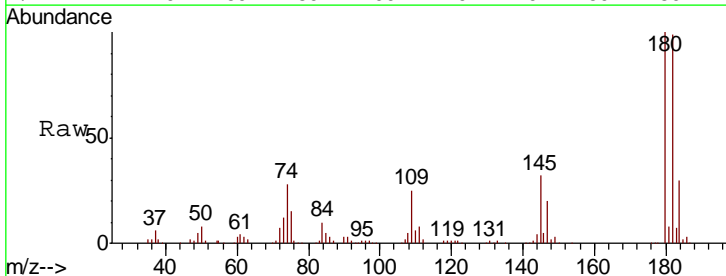


Abundance Ion 180.00 (179.70 to 180.70): V  
 Ion 182.00 (181.70 to 182.70): V  
 Ion 184.00 (183.70 to 184.70): V  
 Ion 145.00 (144.70 to 145.70): V

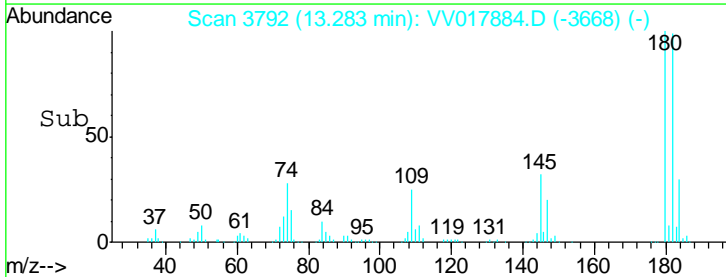
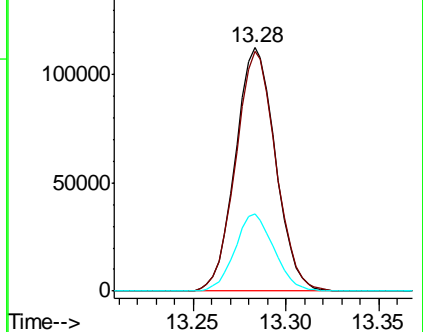


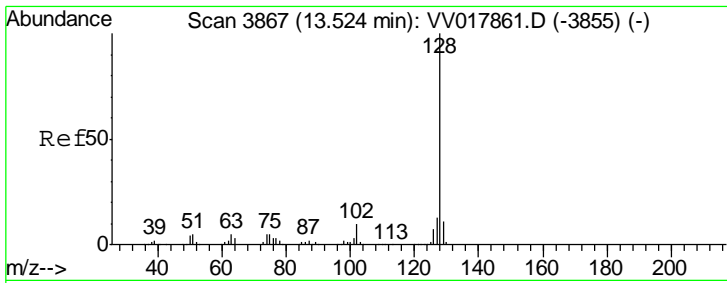
#68  
 1,2,4-trichlorobenzene  
 Concen: 53.286 ug/L  
 RT: 13.28 min Scan# 3792  
 Delta R.T. -0.00 min  
 Lab File: VV017884.D  
 Acq: 10 Aug 2020 09:31

Tgt Ion	Resp	Lower	Upper
180	168205		
182	98.7	75.6	113.4
145	31.2	24.1	36.1



Abundance Ion 180.00 (179.70 to 180.70): V  
 Ion 182.00 (181.70 to 182.70): V  
 Ion 145.00 (144.70 to 145.70): V

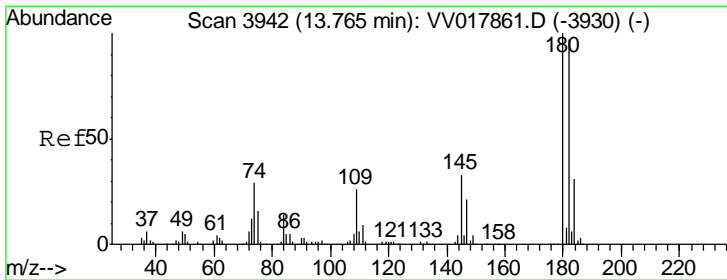
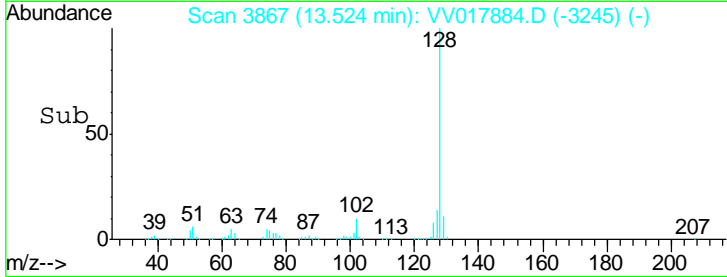
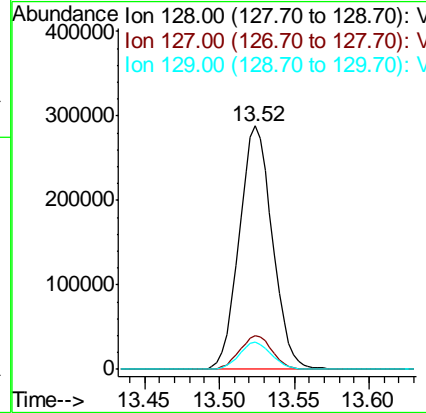
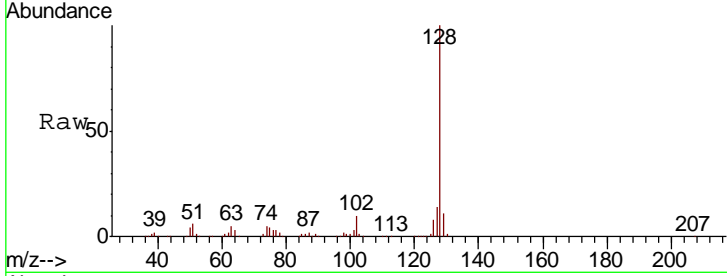




#69  
 Naphthalene  
 Concen: 54.936 ug/L  
 RT: 13.52 min Scan# 3867  
 Delta R.T. -0.00 min  
 Lab File: VV017884.D  
 Acq: 10 Aug 2020 09:31

Instrument : MSVOA\_V  
 ClientSampled : VSTD05095

Tgt Ion	Resp	Lower	Upper
128	442834		
127	13.7	10.8	16.2
129	10.8	8.5	12.7



#70  
 1,2,3-Trichlorobenzene  
 Concen: 54.589 ug/L  
 RT: 13.77 min Scan# 3943  
 Delta R.T. 0.00 min  
 Lab File: VV017884.D  
 Acq: 10 Aug 2020 09:31

Tgt Ion	Resp	Lower	Upper
180	173940		
182	94.8	76.7	115.1
145	32.3	26.1	39.1

