

Data Path : Z:\voasrv\HPCHEM1\MSVOA\_V\Data\VW081122\  
 Data File : VW027282.D  
 Acq On : 11 Aug 2022 12:58  
 Operator : SY/MD  
 Sample : N4144-08  
 Misc : 5.0mL/MSVOA\_V/WATER  
 ALS Vial : 1 Sample Multiplier: 1

Instrument :  
 MSVOA\_V  
 ClientSampleId :  
 EY158

Quant Time: Aug 12 03:42:13 2022  
 Quant Method : Z:\voasrv\HPCHEM1\MSVOA\_V\Method\SFAMVLM080422WMA.M  
 Quant Title : VOC Analysis  
 QLast Update : Fri Aug 12 03:40:21 2022  
 Response via : Initial Calibration

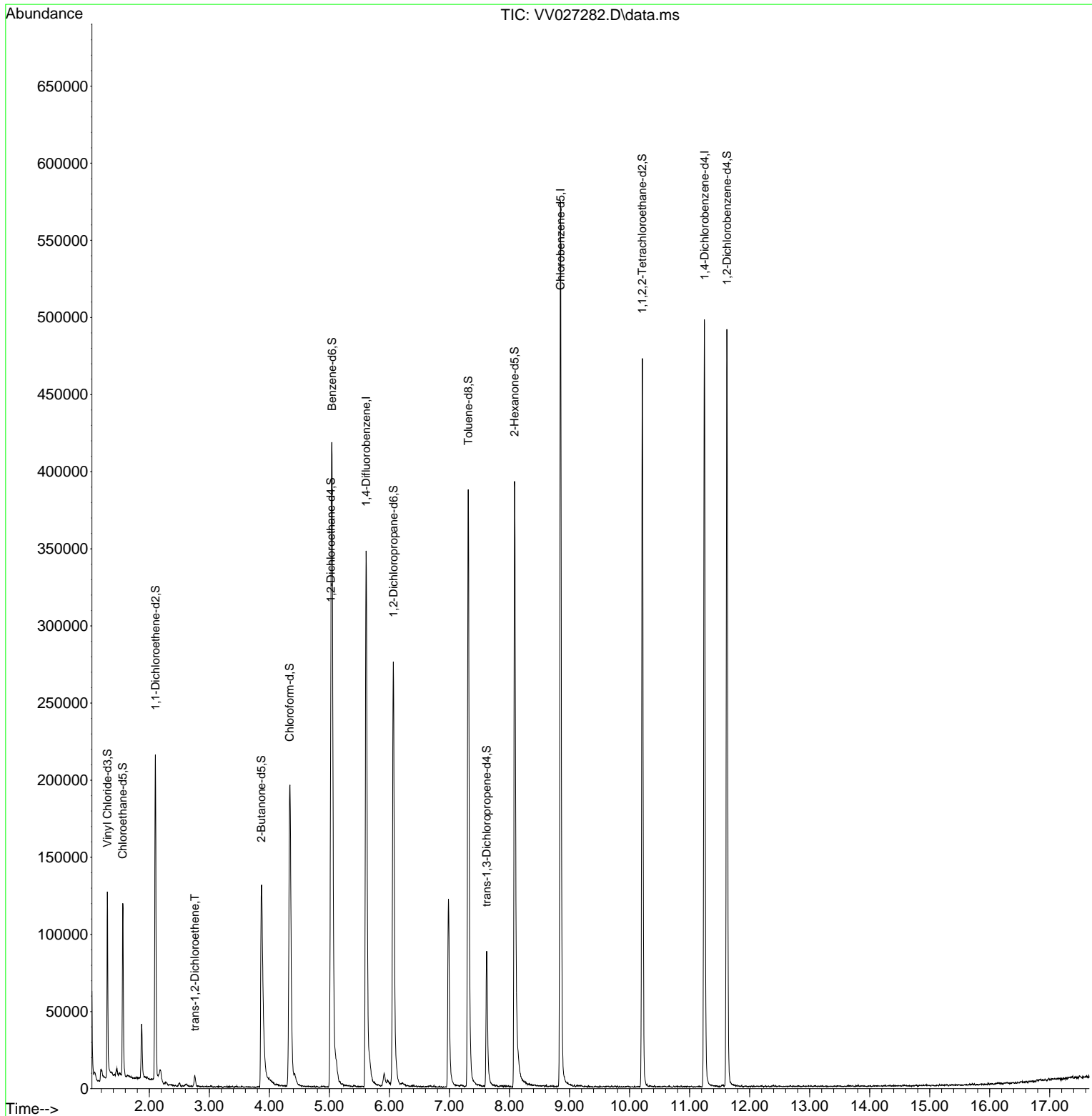
Compound	R.T.	QIon	Response	Conc	Units	Dev(Min)
-----						
Internal Standards						
1) 1,4-Difluorobenzene	5.613	114	299713	50.000	ug/L	0.00
28) Chlorobenzene-d5	8.850	117	310076	50.000	ug/L	0.00
58) 1,4-Dichlorobenzene-d4	11.249	152	123585	50.000	ug/L	0.00
System Monitoring Compounds						
4) Vinyl Chloride-d3	1.301	65	82434	40.342	ug/L	0.00
Spiked Amount	50.000	Range 60 - 135	Recovery =	80.680%		
7) Chloroethane-d5	1.558	69	72759	48.706	ug/L	0.00
Spiked Amount	50.000	Range 70 - 130	Recovery =	97.420%		
11) 1,1-Dichloroethene-d2	2.102	63	110949	29.684	ug/L	0.00
Spiked Amount	50.000	Range 60 - 125	Recovery =	59.360%#		
21) 2-Butanone-d5	3.867	46	207942	114.326	ug/L	0.00
Spiked Amount	100.000	Range 40 - 130	Recovery =	114.330%		
24) Chloroform-d	4.339	84	201193	48.068	ug/L	0.00
Spiked Amount	50.000	Range 70 - 125	Recovery =	96.140%		
26) 1,2-Dichloroethane-d4	5.024	65	134952	51.930	ug/L	0.00
Spiked Amount	50.000	Range 70 - 125	Recovery =	103.860%		
32) Benzene-d6	5.043	84	358544	48.218	ug/L	0.00
Spiked Amount	50.000	Range 70 - 125	Recovery =	96.440%		
36) 1,2-Dichloropropane-d6	6.066	67	136476	51.597	ug/L	0.00
Spiked Amount	50.000	Range 70 - 120	Recovery =	103.200%		
41) Toluene-d8	7.314	98	265280	41.855	ug/L	0.00
Spiked Amount	50.000	Range 80 - 120	Recovery =	83.700%		
43) trans-1,3-Dichloroprop...	7.619	79	50907	44.155	ug/L	0.00
Spiked Amount	50.000	Range 60 - 125	Recovery =	88.300%		
47) 2-Hexanone-d5	8.085	63	132293	103.844	ug/L	0.00
Spiked Amount	100.000	Range 45 - 130	Recovery =	103.840%		
56) 1,1,2,2-Tetrachloroeth...	10.214	84	221841	51.466	ug/L	0.00
Spiked Amount	50.000	Range 65 - 120	Recovery =	102.940%		
66) 1,2-Dichlorobenzene-d4	11.622	152	120740	56.574	ug/L	0.00
Spiked Amount	50.000	Range 80 - 120	Recovery =	113.140%		
-----						
Target Compounds						Qvalue
17) trans-1,2-Dichloroethene	2.757	96	2515	1.094	ug/L	95
-----						

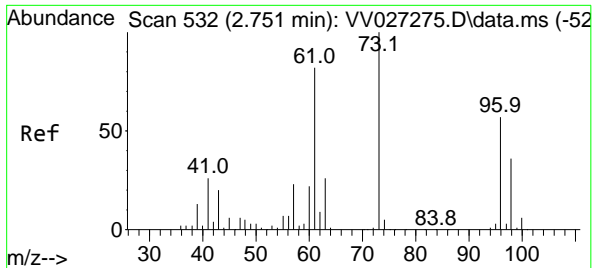
(#) = qualifier out of range (m) = manual integration (+) = signals summed

Data Path : Z:\voasrv\HPCHEM1\MSVOA\_V\Data\VV081122\  
 Data File : VV027282.D  
 Acq On : 11 Aug 2022 12:58  
 Operator : SY/MD  
 Sample : N4144-08  
 Misc : 5.0mL/MSVOA\_V/WATER  
 ALS Vial : 1 Sample Multiplier: 1

Instrument :  
 MSVOA\_V  
 ClientSampleId :  
 EY158

Quant Time: Aug 12 03:42:13 2022  
 Quant Method : Z:\voasrv\HPCHEM1\MSVOA\_V\Method\SFAMVLM080422WMA.M  
 Quant Title : VOC Analysis  
 QLast Update : Fri Aug 12 03:40:21 2022  
 Response via : Initial Calibration





#17  
 trans-1,2-Dichloroethene  
 Concen: 1.094 ug/L  
 RT: 2.757 min Scan# 51  
 Delta R.T. 0.006 min  
 Lab File: VV027282.D  
 Acq: 11 Aug 2022 12:58

Instrument : MSVOA\_V  
 ClientSampleId : EY158

Tgt Ion: 96 Resp: 2515

Ion	Ratio	Lower	Upper
96	100		
61	135.3	89.2	165.6
98	63.7	44.6	82.8

